

U R B A N P A L A C E S

**ZRICKS** WORLD



**RIBERA**

Boat Club Road, Pune

CONTENTS



Welcome to Marvel Ribera

1

A princely locale

3



The palace grounds

5

**ZRICKS**  
ARCHITECTURE

Chamber specifications

7

Plans

9

Palaces have always enjoyed the most privileged location in any kingdom. Sitting regally at prime locations across Pune, our Urban Palaces are monarchs of discerning luxury, elegance and taste. And befitting a modern-day palace, they are also equipped with cutting-edge technology and automation.

## **WELCOME TO MARVEL RIBERA, YOUR MAJESTY.**

Among our Urban Palaces, allow us to present to you Marvel Ribera. An exclusive riverside collection of luxurious and spacious 3.5, 4 and 5 BHK apartments and penthouses of luxurious space on Boat Club Road. Apartments where the prime location doesn't deter you from enjoying the silence under the tranquil shade of trees or listening to the calming music of the river flowing by.

Experience the lavishness of our Urban Palaces for yourself. Whether it's through the next few pages, or on a site visit, you will find a home that befits 21st century royalty.







## A PRINCELY LOCALE

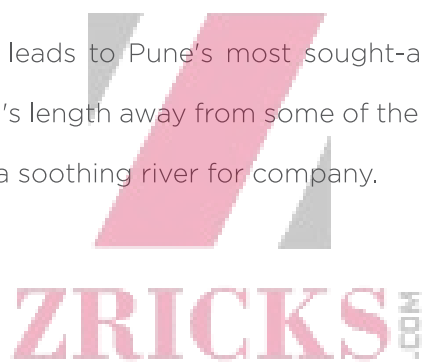
Boat Club Road. The tree-lined avenue that leads to Pune's most sought-after addresses. Here, you have the luxury of being just an arm's length away from some of the most high-end boutiques and restaurants, while also having a soothing river for company.

**AIRPORT** 6 kms

**RAILWAY STATION** 2 kms

**HOSPITAL** 1 km

**SCHOOL** 3 kms





## THE PALACE GROUNDS

As you enter the palace grounds, a sense of calm pervades under the shade of the lush green trees while the river blocks out the rest of the kingdom. Behold the grand palace, as 13 sprawling floors of 31 exclusive apartments tower over you. Pass by the guards under a canopied driveway to the luxurious lobby where a liveried concierge awaits. Allow your chariot to descend to its spacious quarters. Tally a while as you take in the botanical gardens, stroll through the lawns or take a walk along the promenade beside the infinity pool.

For more intensive pursuits, head to the state-of-the-art gymnasium, followed by an unwinding sauna or spa session. This will get you in the mood to hold court at the clubhouse which boasts of facilities such as a private lounge, pool tables, a mini-theatre and a board game area. Should you wish to keep to yourself, do retire to the library and relax.

## A SELECTION OF RESIDENCES



**ZRICKS** INDIA

Enter your 3.5 or 4.5 BHK apartment or penthouse and take a long walk across the imported marble flooring from your front door. Explore the expansive space under your seemingly infinite ceiling as you admire the exclusive design, luxury and comfort. Let your discerning eye take in every little fixture and detail that sparkles in the glowing natural light. Step out of the VRV central air conditioning as you step onto the sundeck or take a dip in your terrace pool. Enjoy the majestic view from your palatial home, which is open on three sides, while choosing to remain unseen like a true monarch.





## CHAMBER SPECIFICATIONS

### LIVING ROOM

- Imported marble flooring
- POP/Gypsum finish for walls and ceilings
- Telephone and cable TV connections
- Teakwood doors and door frames

### BEDROOM

- Wooden/imported marble flooring in master bedroom
- Imported marble flooring in other bedrooms
- Telephone and cable TV connections

### KITCHEN

- Branded modular kitchen with hob and chimney
- White goods – dishwasher, oven and microwave

### BATHROOM

- Imported marble flooring
- Jacuzzi and steam room in master bathroom
- Separate shower cubicle and dry area in all bathrooms
- Wash basins with counters
- Finest quality fittings and sanitaryware

### AUTOMATION

- Apartment management system with touch-screen/remote control for electricals, air conditioning and geysers

### DOUBLE-HEIGHT LANDSCAPED PRIVATE TERRACE

### 100% GENERATOR BACK-UP

### VRV CENTRAL AIR CONDITIONING

### PLUNGE POOL ON TERRACE IN SELECT APARTMENTS



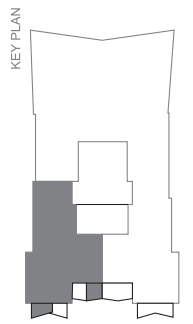
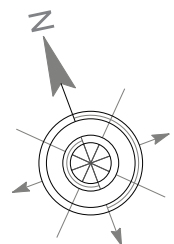
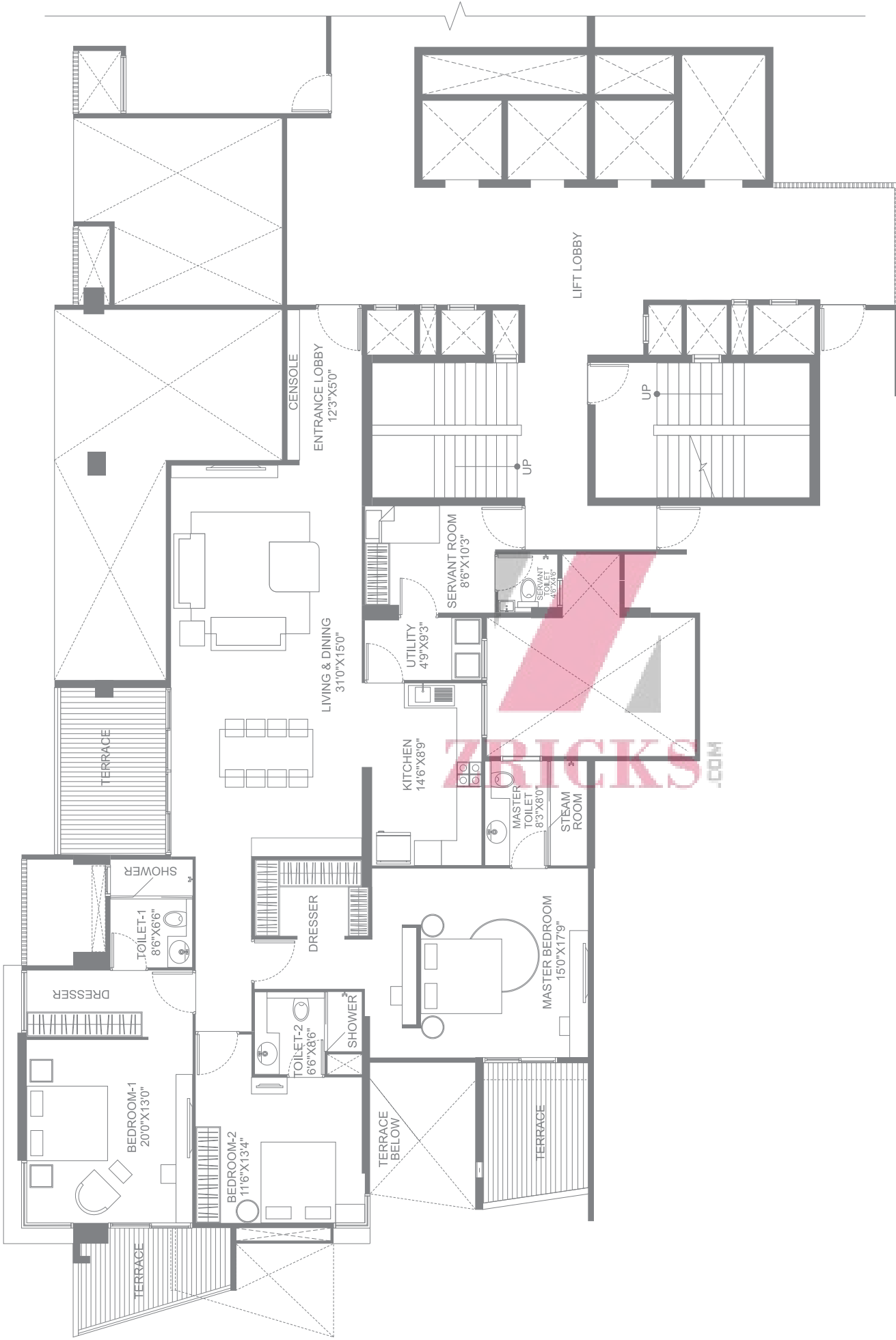






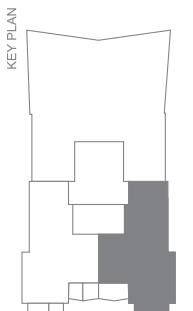
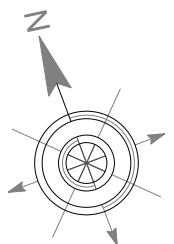
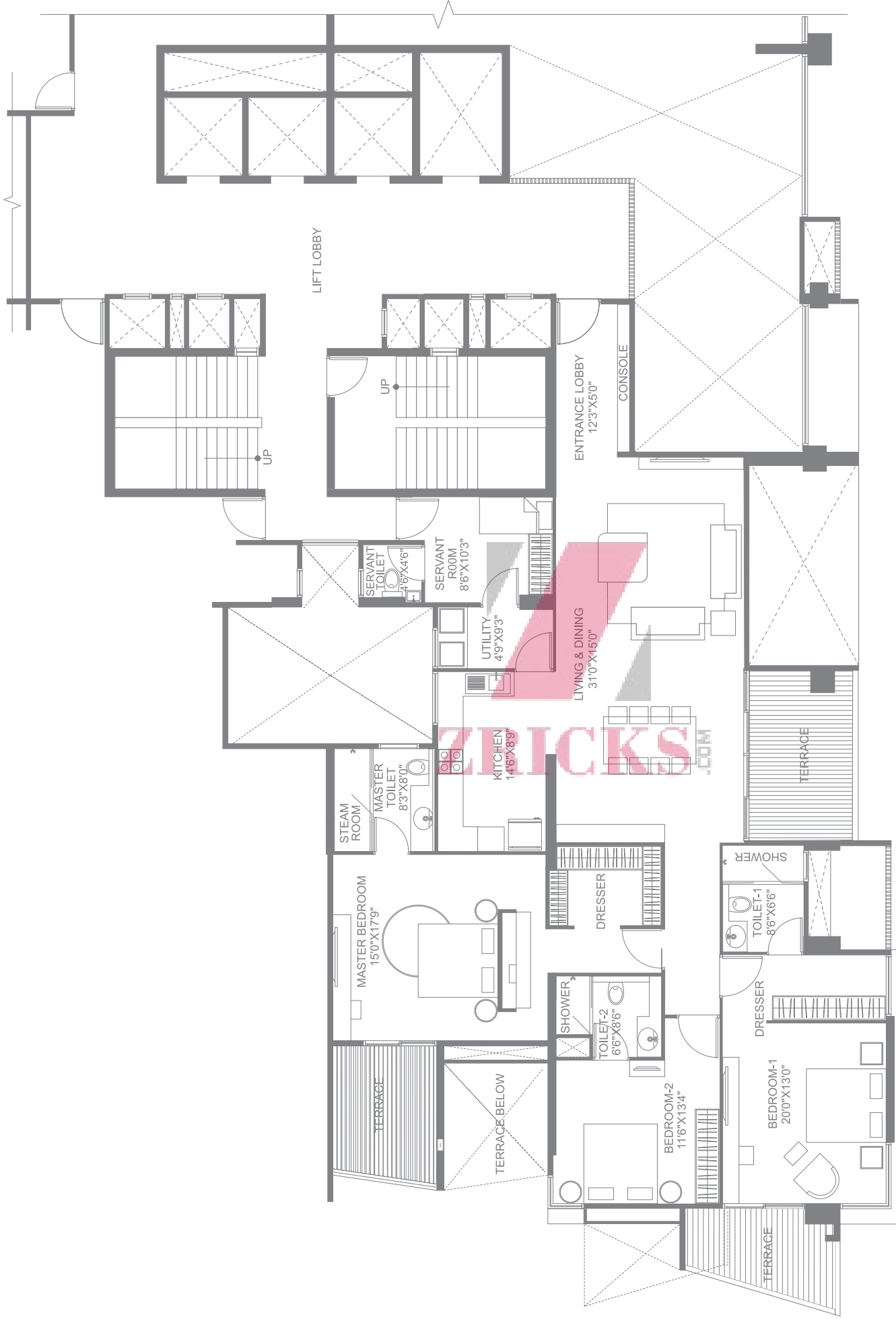
PLANS





FLAT NO.	101	FLAT	3.5 BHK	FLAT AREA	2430 Sq. ft.	TERRACE AREA	380 Sq. ft.	TOTAL SALEABLE AREA	2810 Sq. ft.
----------	-----	------	---------	-----------	--------------	--------------	-------------	---------------------	--------------

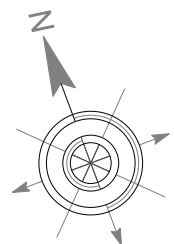
**RIBERA**  
3 BHK WITH SERVANTS' ROOM



FLAT NO.	103	FLAT	3.5 BHK	FLAT AREA	2430 Sq. ft.	TERRACE AREA	380 Sq. ft.	TOTAL SALEABLE AREA	2810 Sq. ft.
----------	-----	------	---------	-----------	--------------	--------------	-------------	---------------------	--------------

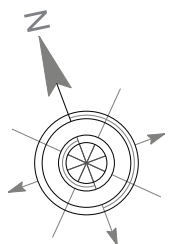
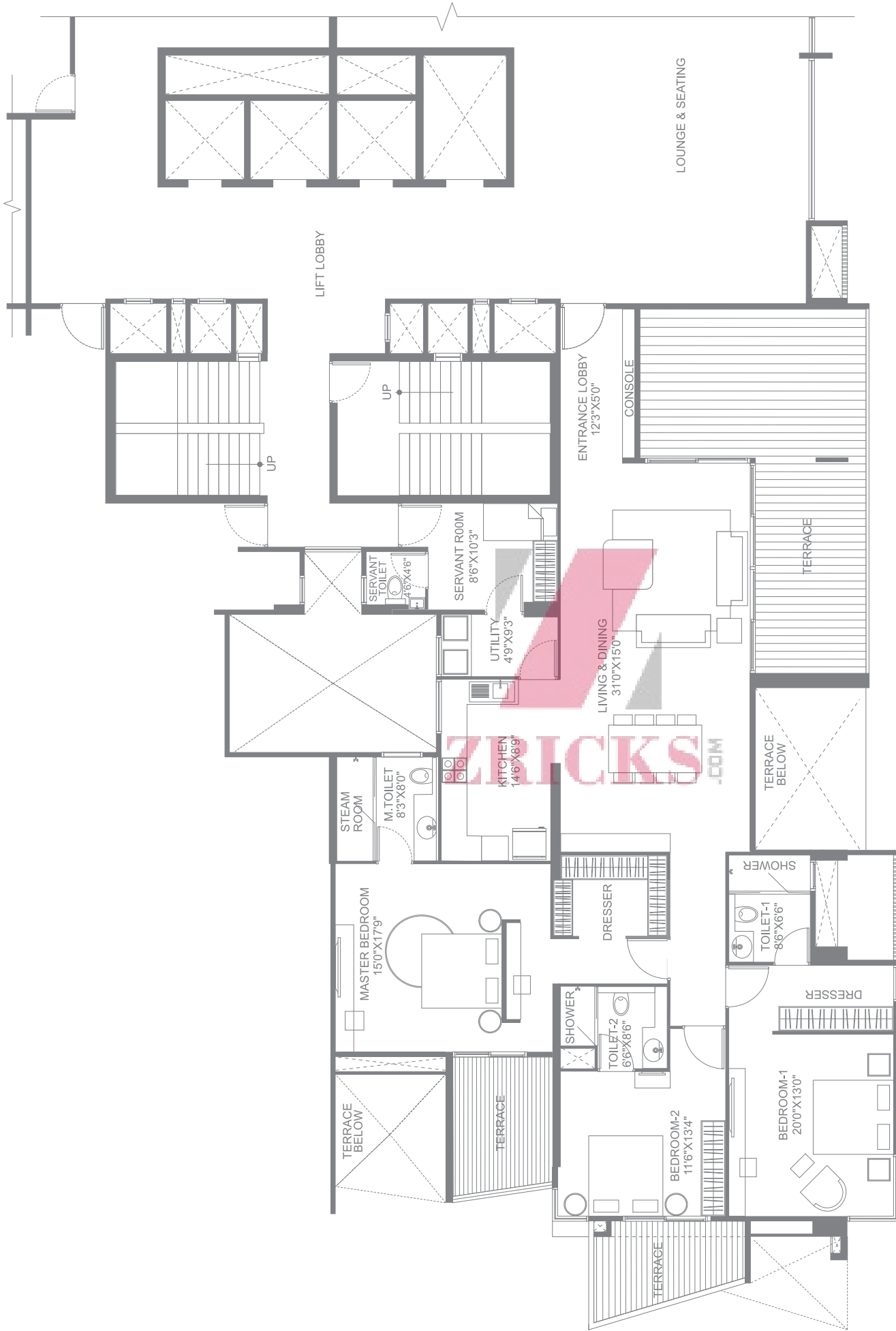
**RIBERA**  
3 BHK WITH SERVANTS' ROOM





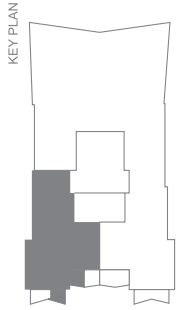
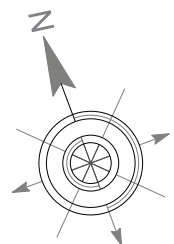
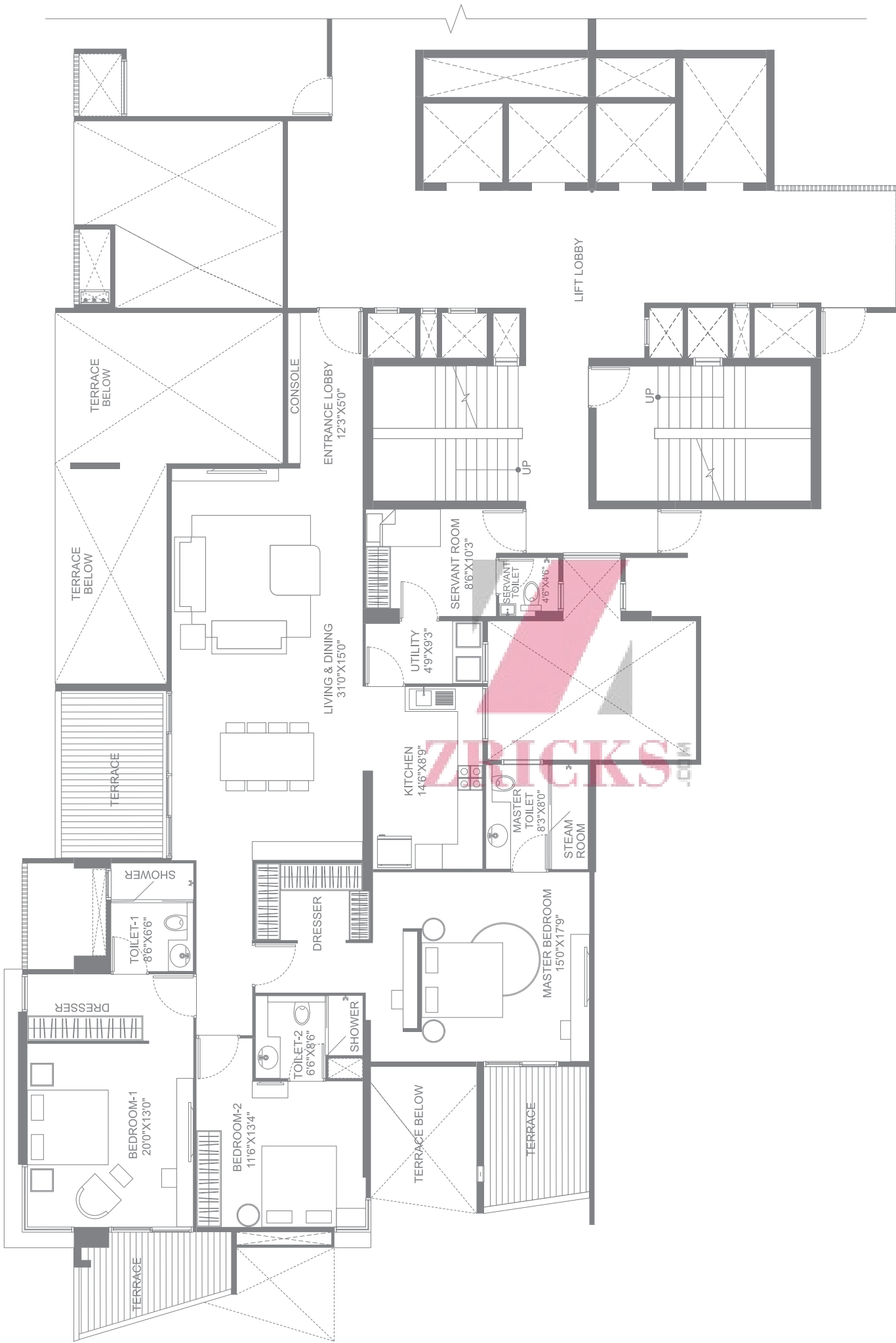
FLAT NO.	FLAT	FLAT AREA	TERRACE AREA	TOTAL SALEABLE AREA
201, 401, 601	3.5 BHK	2440 Sq. ft.	710 Sq. ft.	3150 Sq. ft.

**RIBERA**  
3 BHK WITH SERVANTS' ROOM



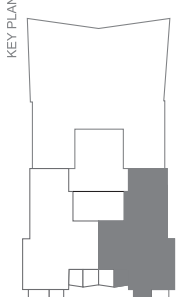
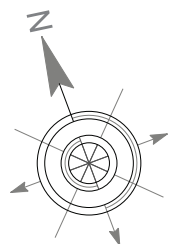
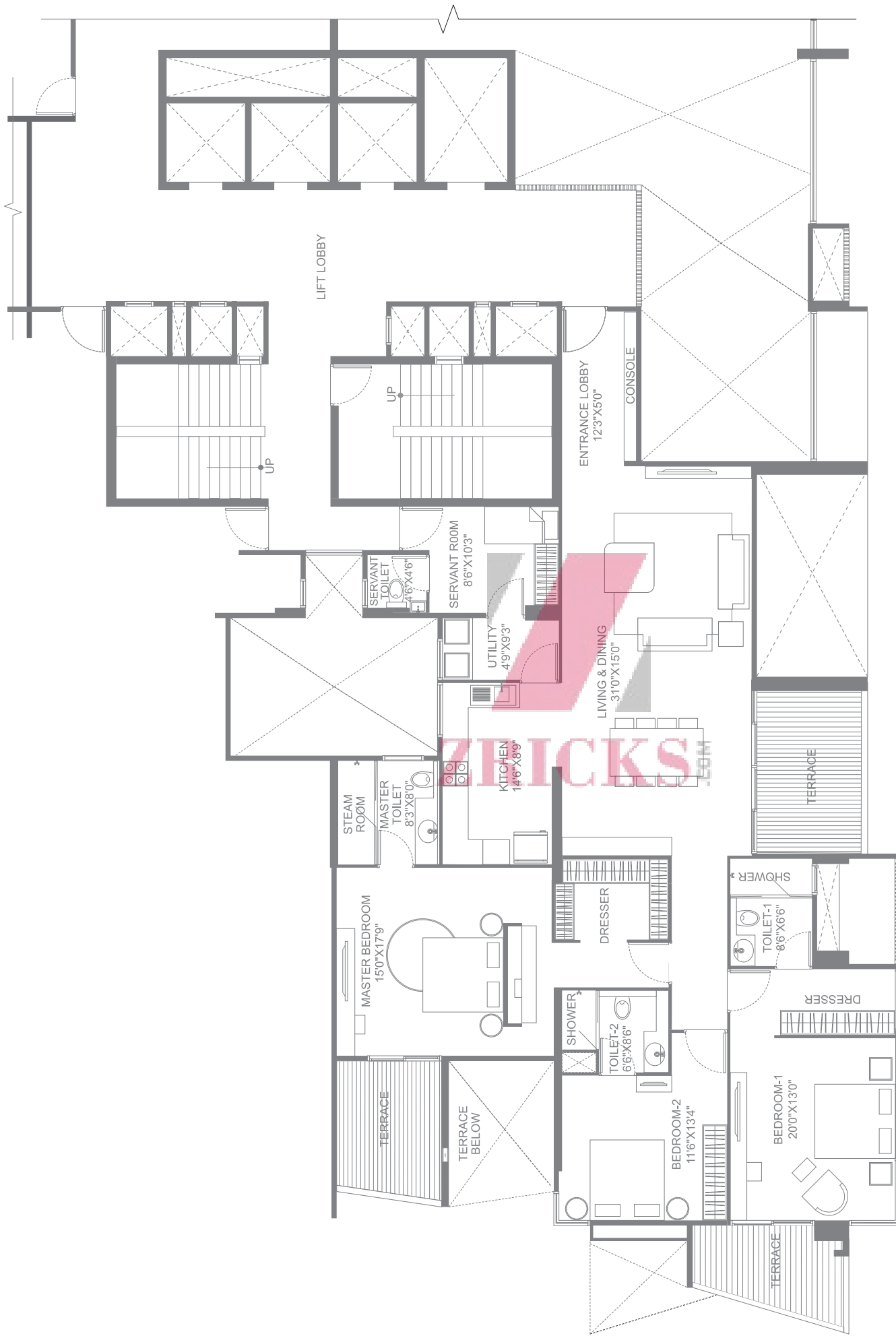
FLAT NO.	FLAT	FLAT AREA	TERRACE AREA	TOTAL SALEABLE AREA
203, 403, 603	3.5 BHK	2440 Sq. ft.	710 Sq. ft.	3150 Sq. ft.

**RIBERA**  
3 BHK WITH SERVANTS' ROOM



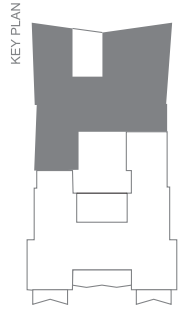
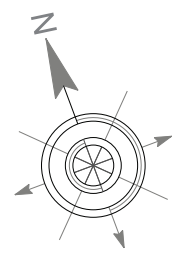
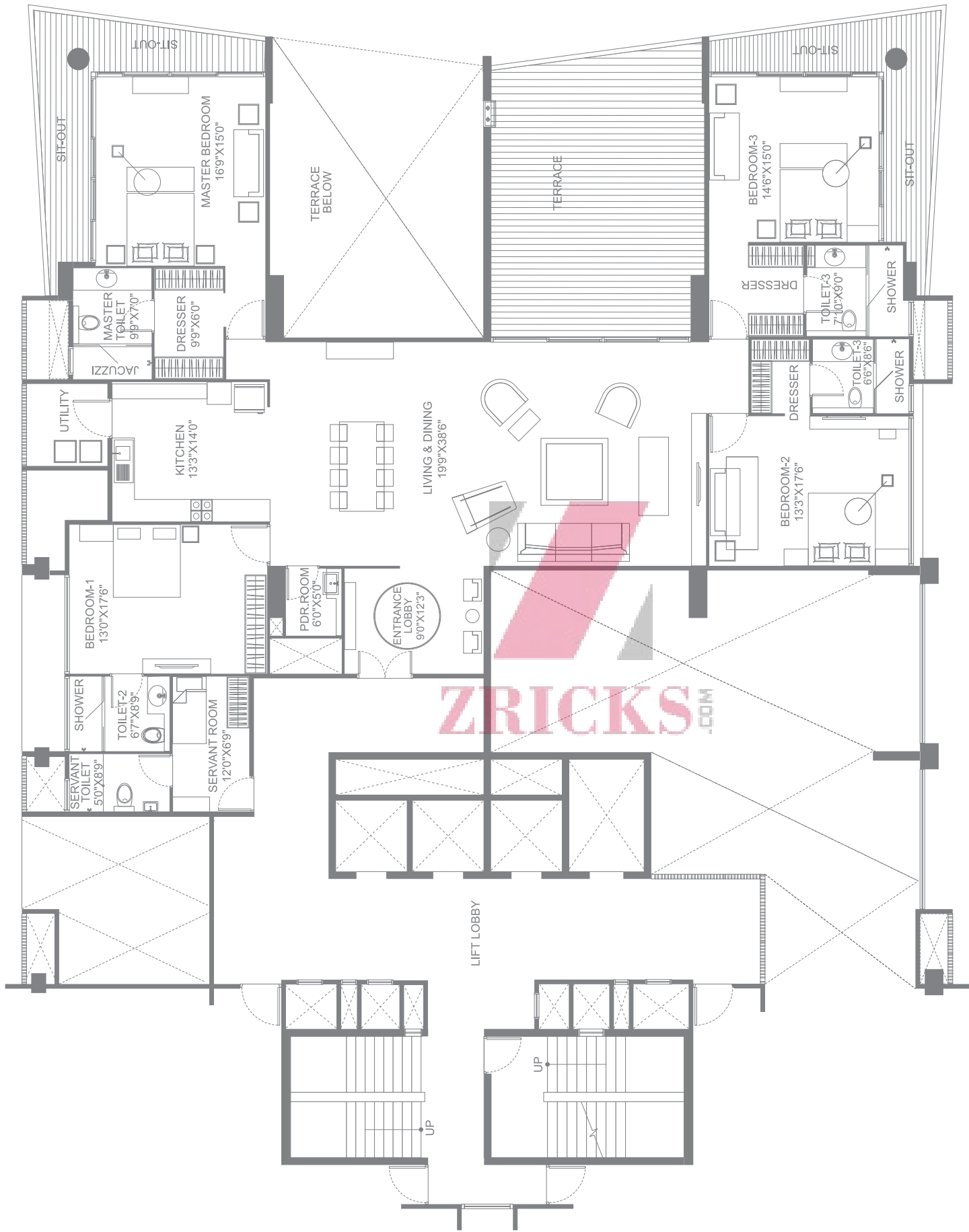
FLAT NO.	FLAT	FLAT AREA	TERRACE AREA	TOTAL SALEABLE AREA
301, 501, 701	3.5 BHK	2430 Sq. ft.	380 Sq. ft.	2810 Sq. ft.

**RIBERA**  
3 BHK WITH SERVANTS' ROOM



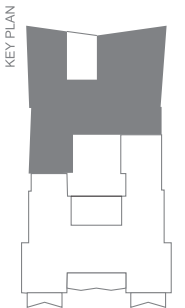
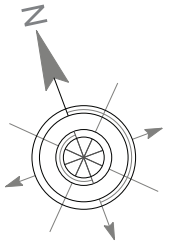
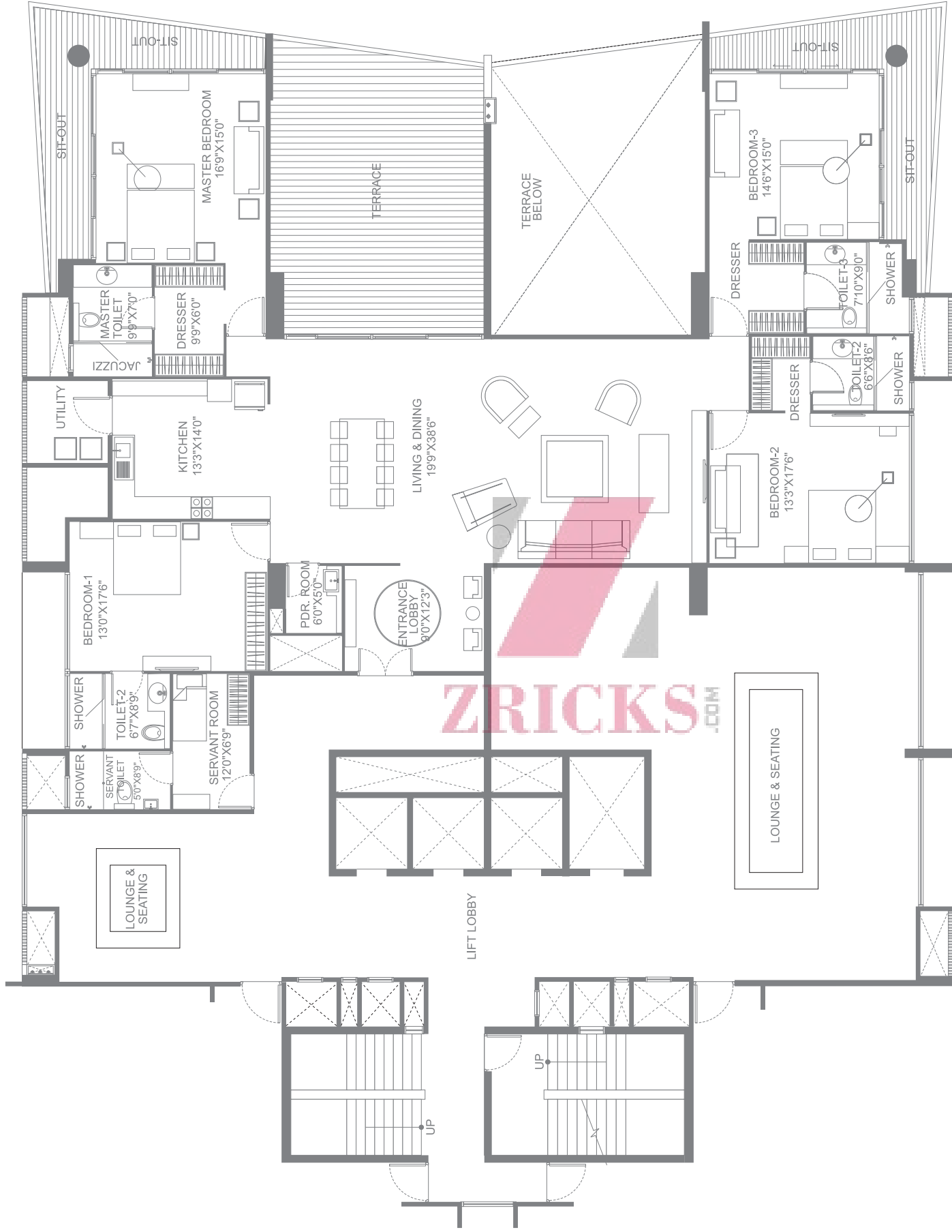
FLAT NO.	FLAT	FLAT AREA	TERRACE AREA	TOTAL SALEABLE AREA
303, 503, 703	3.5 BHK	2430 Sq. ft.	380 Sq. ft.	2810 Sq. ft.

**RIBERA**  
3 BHK WITH SERVANTS' ROOM



FLAT NO.	FLAT	FLAT AREA	TERRACE AREA	SIT OUT AREA	TOTAL SALEABLE AREA
102	4.5 BHK	3485 Sq. ft.	610 Sq. ft.	455 Sq. ft.	4550 Sq. ft.

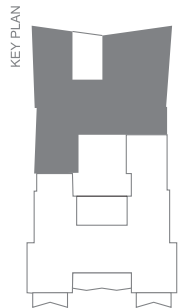
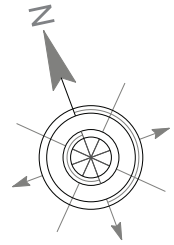
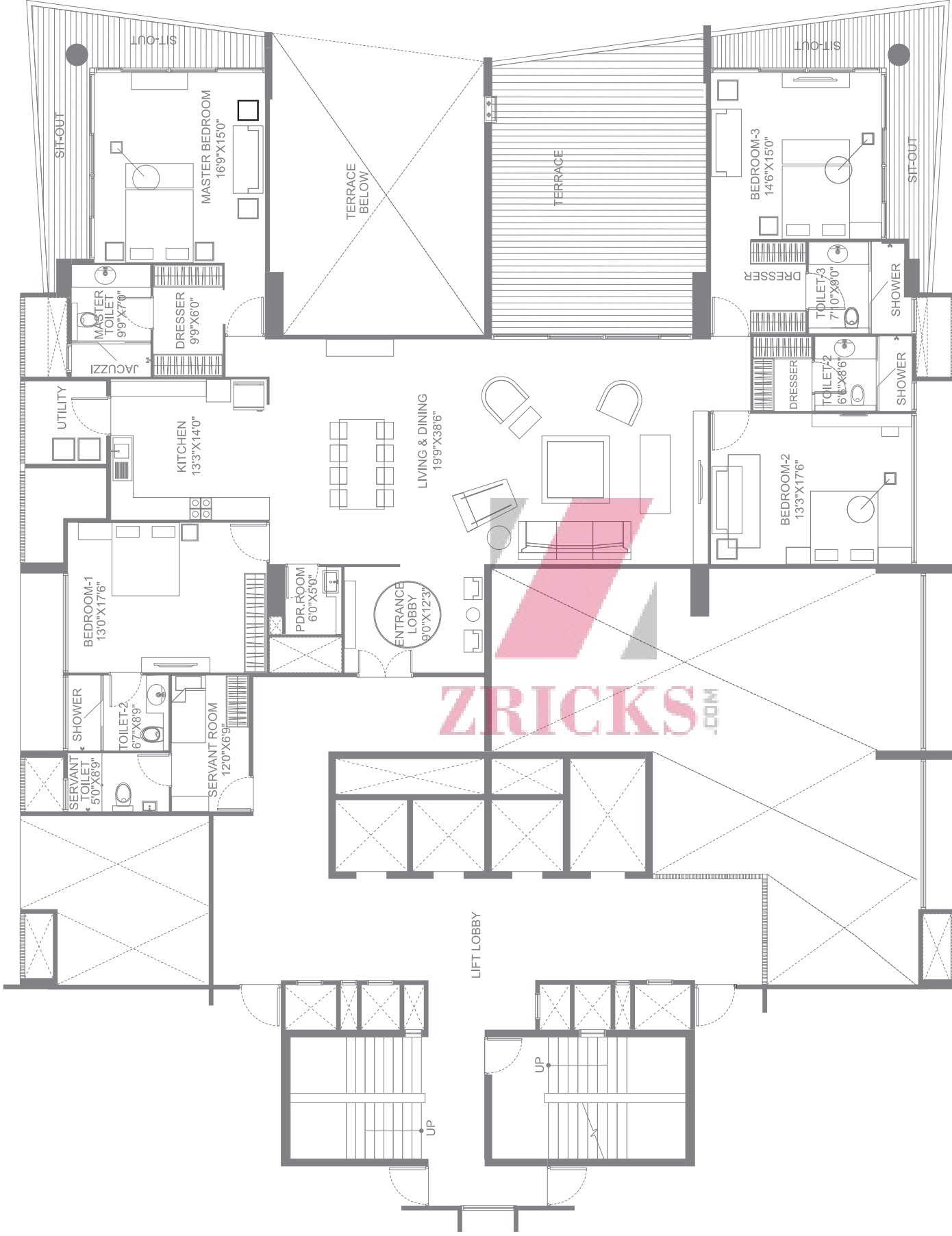
**RIBERA**  
4 BHK WITH SERVANTS' ROOM



FLAT NO.	FLAT	FLAT AREA	TERRACE AREA	SIT OUT AREA	TOTAL SALEABLE AREA
202, 402, 602	4.5 BHK	3485 Sq. ft.	610 Sq. ft.	455 Sq. ft.	4550 Sq. ft.

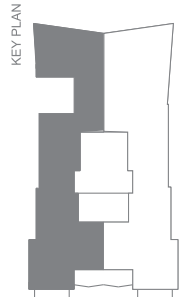
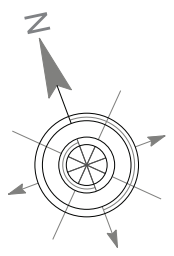
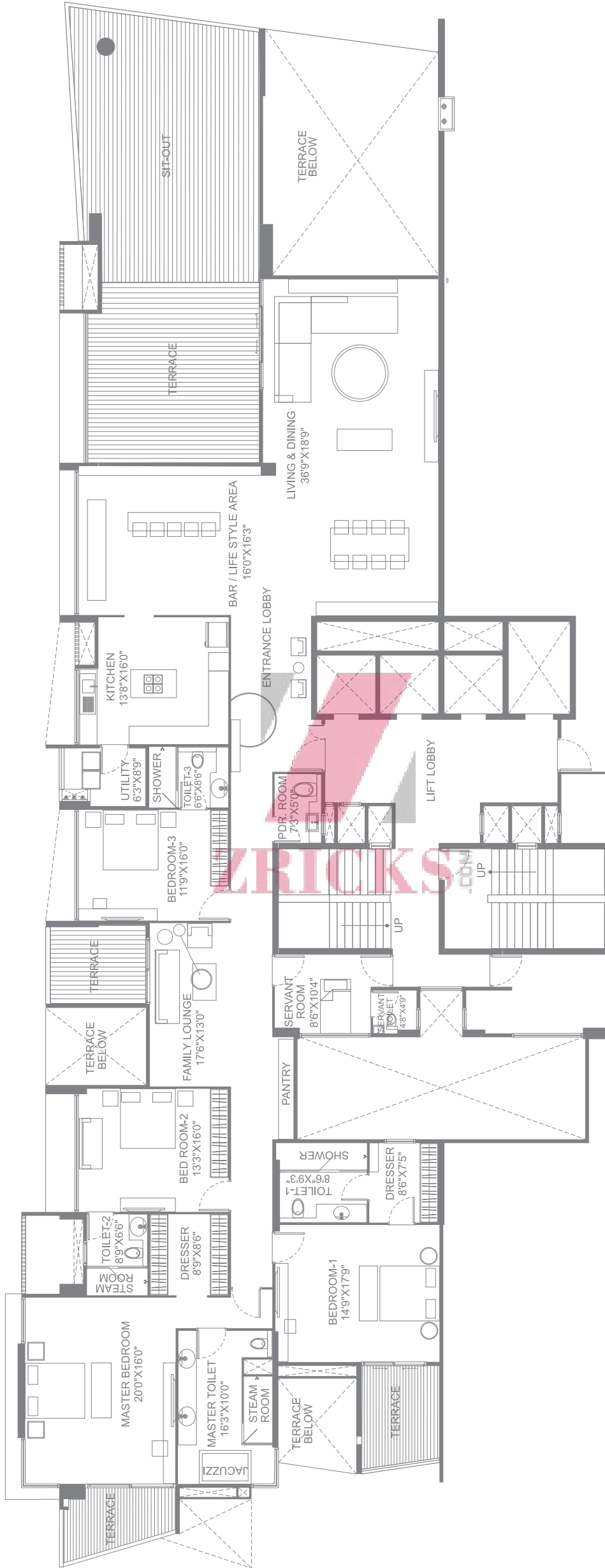
**RIBERA**  
4 BHK WITH SERVANTS' ROOM





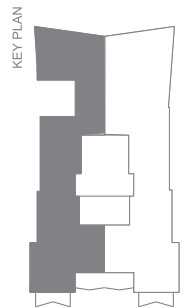
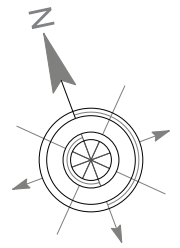
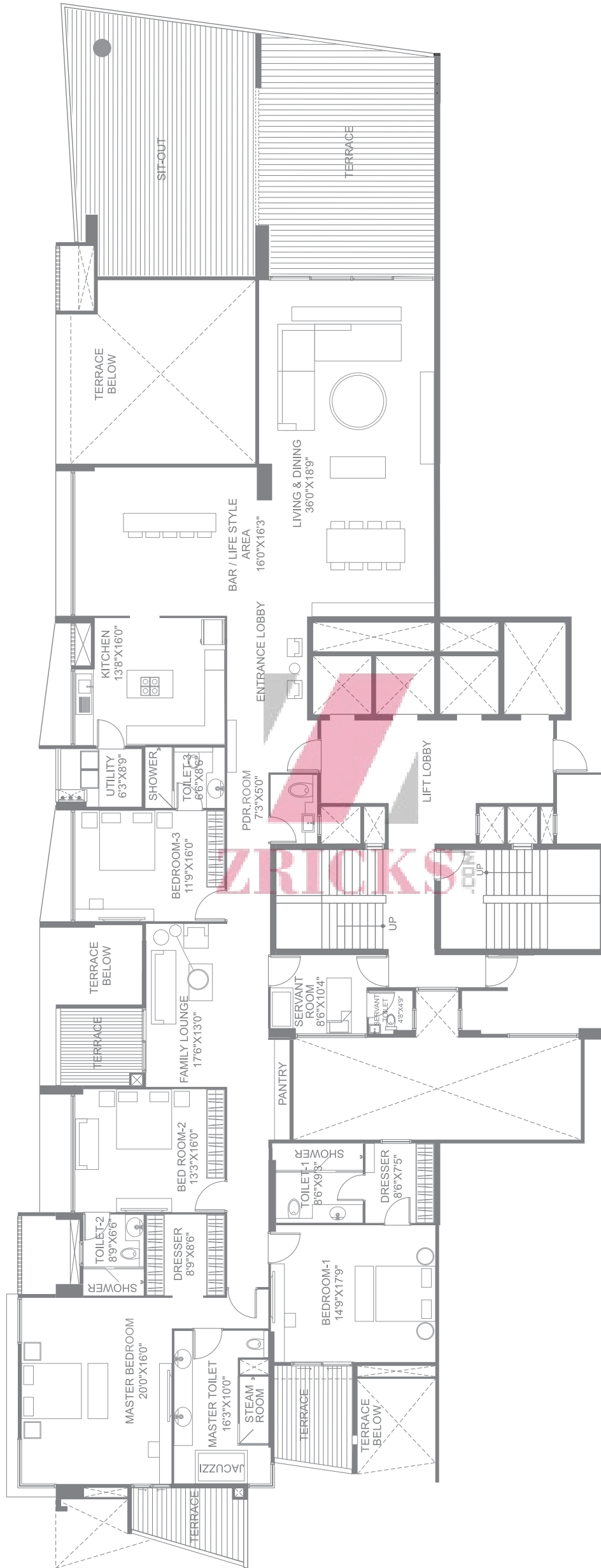
FLAT NO.	FLAT	FLAT AREA	TERRACE AREA	SIT OUT AREA	TOTAL SALEABLE AREA
302, 502, 702	4.5 BHK	3485 Sq. ft.	610 Sq. ft.	455 Sq. ft.	4550 Sq. ft.

**RIBERA**  
4 BHK WITH SERVANTS' ROOM



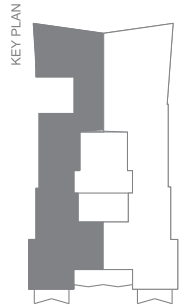
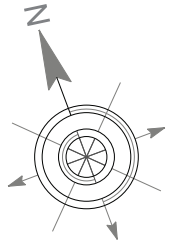
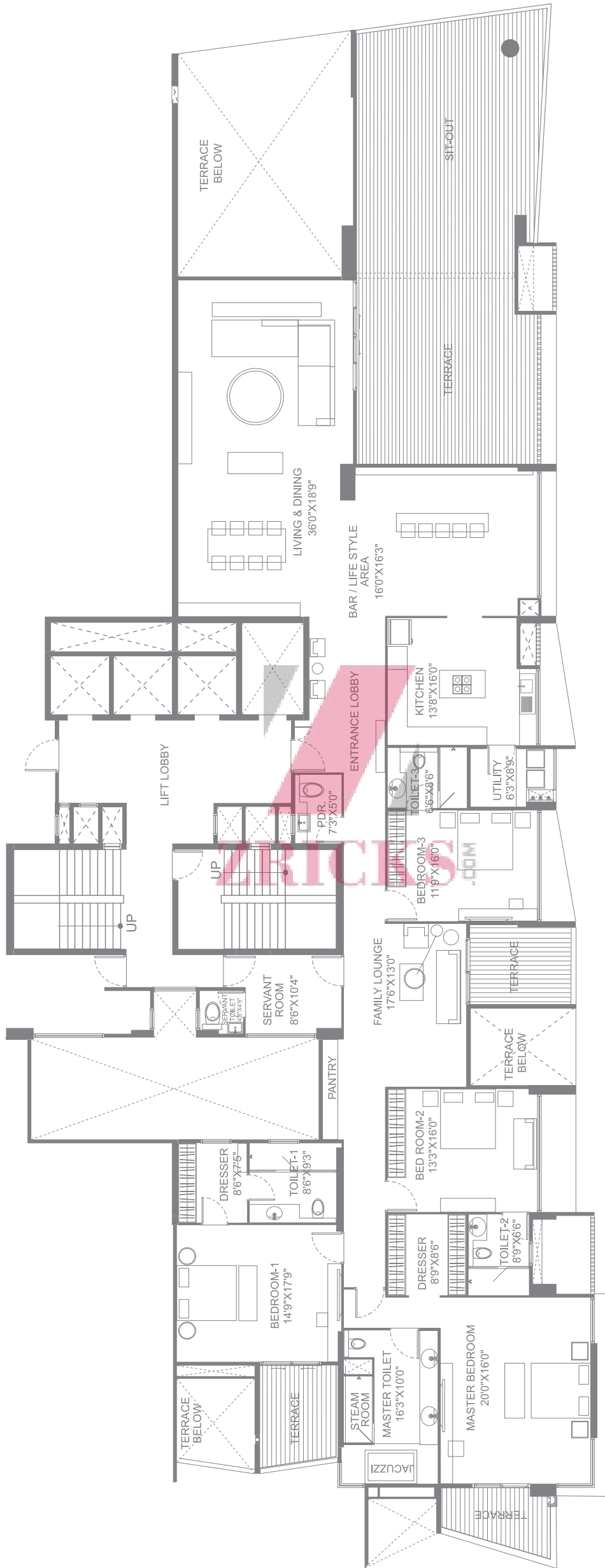
**RIBERA**  
4 BHK WITH SERVANTS' ROOM

FLAT NO.	FLAT	FLAT AREA	TERRACE AREA	SIT OUT AREA	TOTAL SALEABLE AREA
901	4.5 BHK	4560 Sq. ft.	690 Sq. ft.	715 Sq. ft.	5965 Sq. ft.



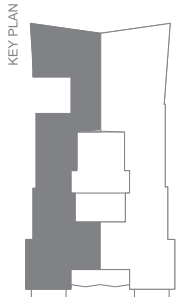
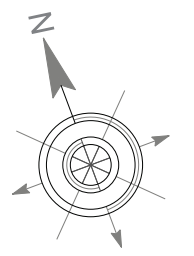
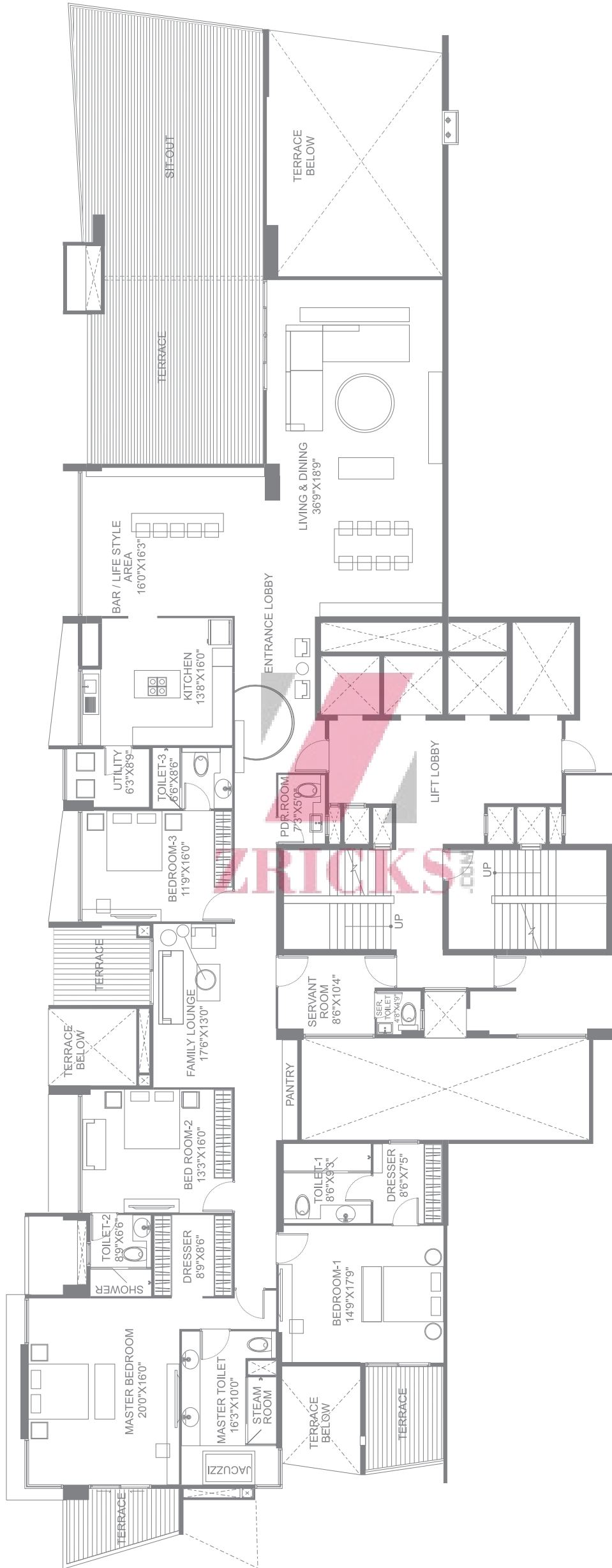
FLAT NO.	FLAT	FLAT AREA	TERRACE AREA	SIT OUT AREA	TOTAL SALEABLE AREA
1001	4.5 BHK	4565 Sq. ft.	950 Sq. ft.	715 Sq. ft.	6230 Sq. ft.

**RIBERA**  
4 BHK WITH SERVANTS' ROOM



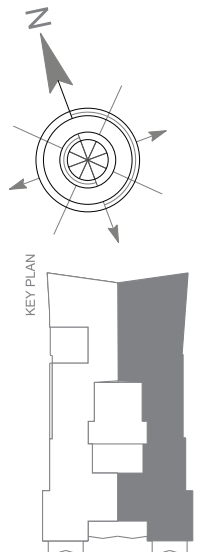
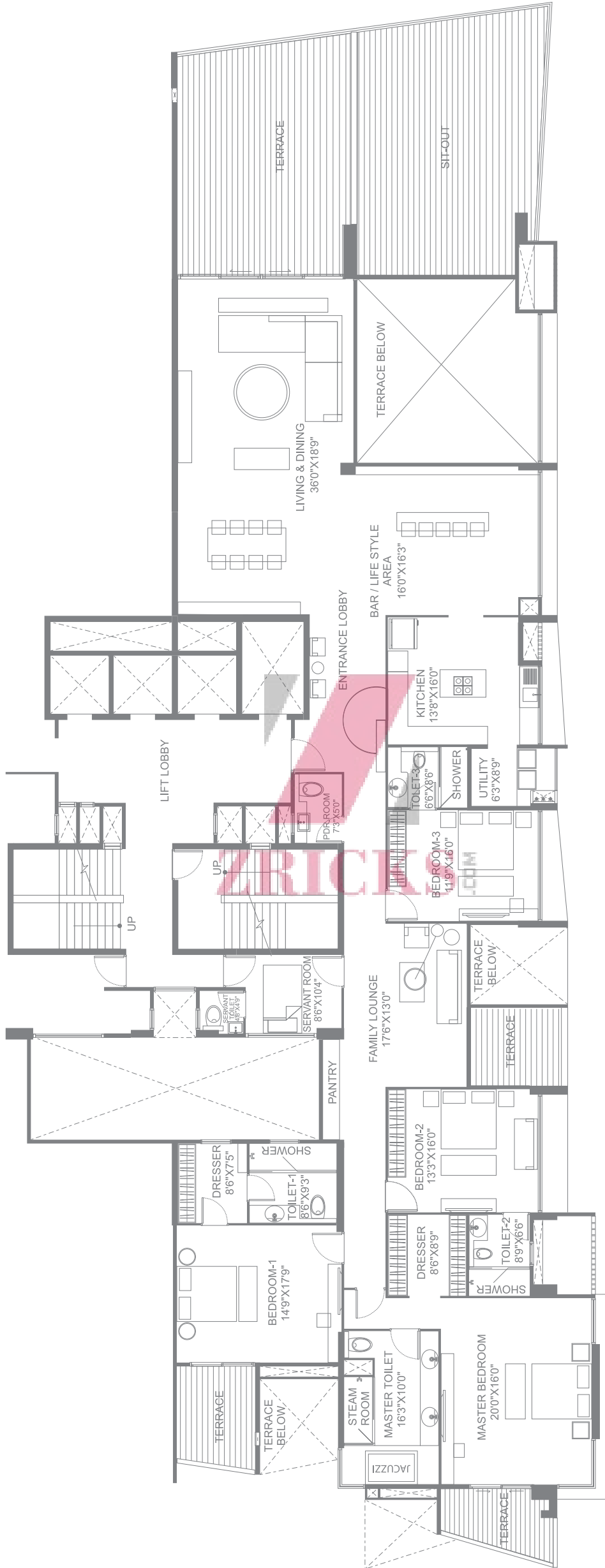
FLAT NO.	FLAT	FLAT AREA	TERRACE AREA	SIT OUT AREA	TOTAL SALEABLE AREA
1002	4.5 BHK	4565 Sq. ft.	905 Sq. ft.	715 Sq. ft.	6185 Sq. ft.

**RIBERA**  
4 BHK WITH SERVANTS' ROOM



FLAT NO.	FLAT	FLAT AREA	TERRACE AREA	SIT OUT AREA	TOTAL SALEABLE AREA
1101	4.5 BHK	4565 Sq. ft.	690 Sq. ft.	715 Sq. ft.	5970 Sq. ft.

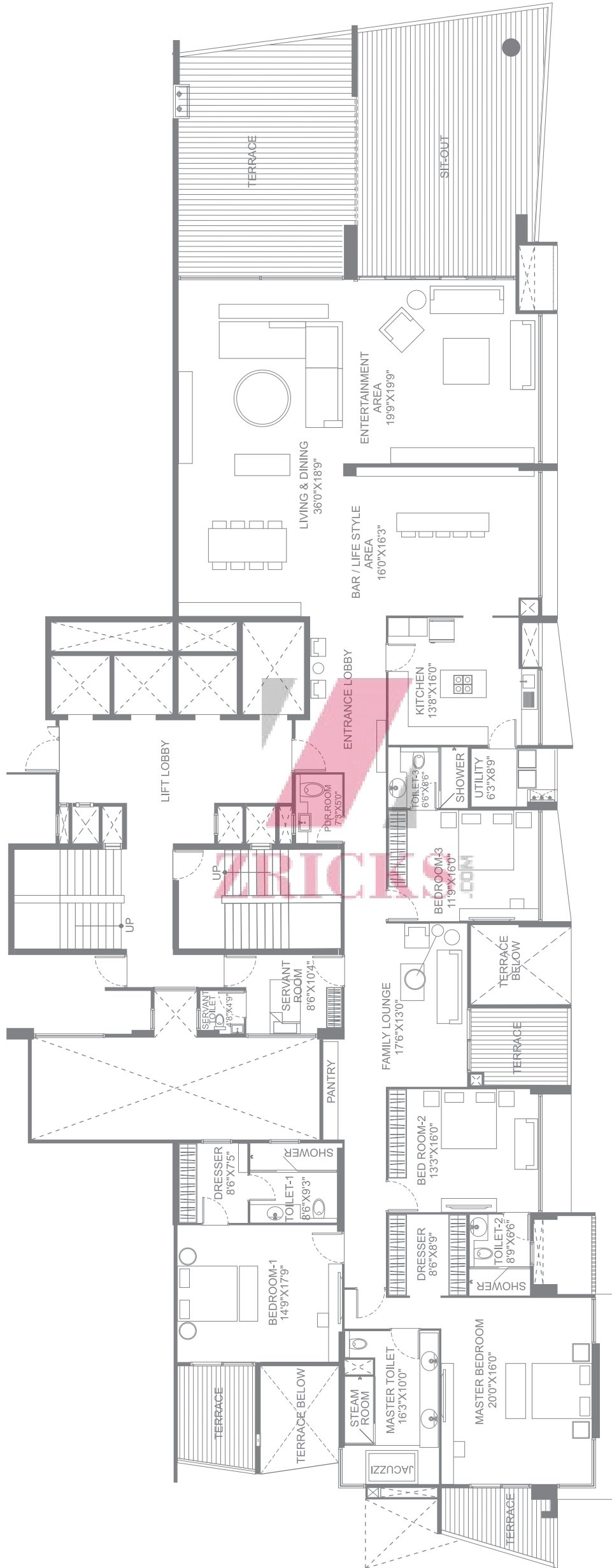
**RIBERA**  
4 BHK WITH SERVANTS' ROOM



FLAT NO.	FLAT	FLAT AREA	TERRACE AREA	SIT OUT AREA	TOTAL SALEABLE AREA
1102	4.5 BHK	4565 Sq. ft.	835 Sq. ft.	715 Sq. ft.	6115 Sq. ft.

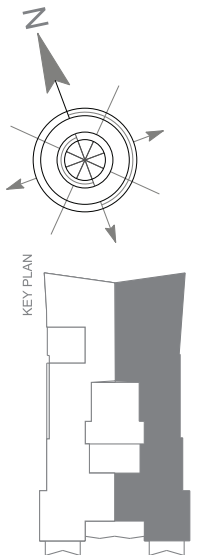
**RIBERA**  
4 BHK WITH SERVANTS' ROOM

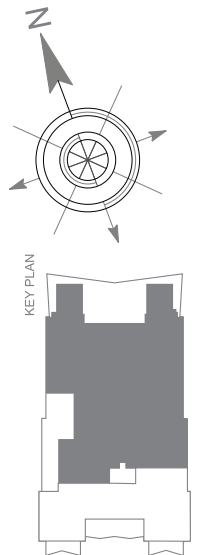
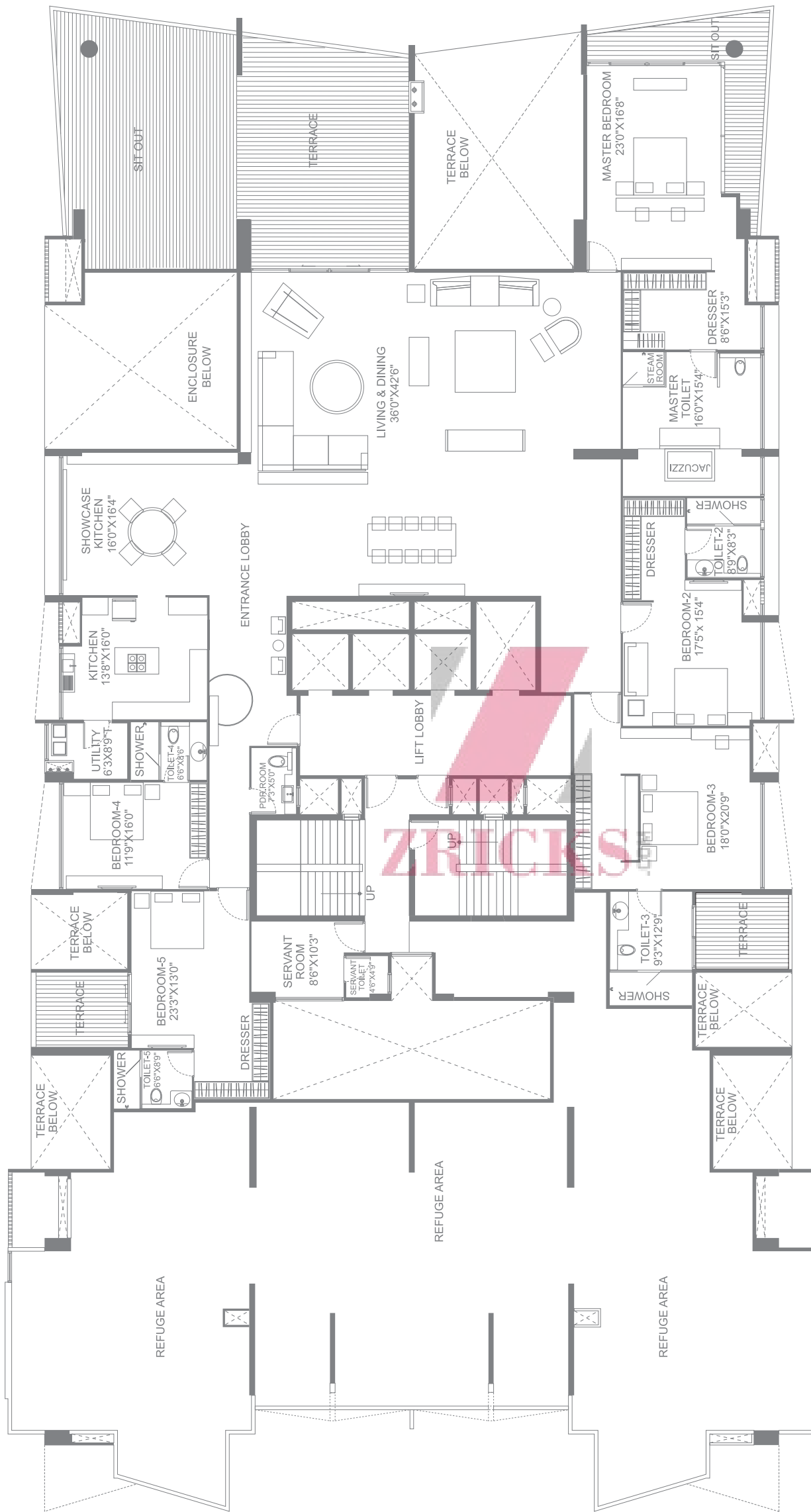




**RIBERA**  
4 BHK WITH SERVANTS' & ENTERTAINMENT ROOM

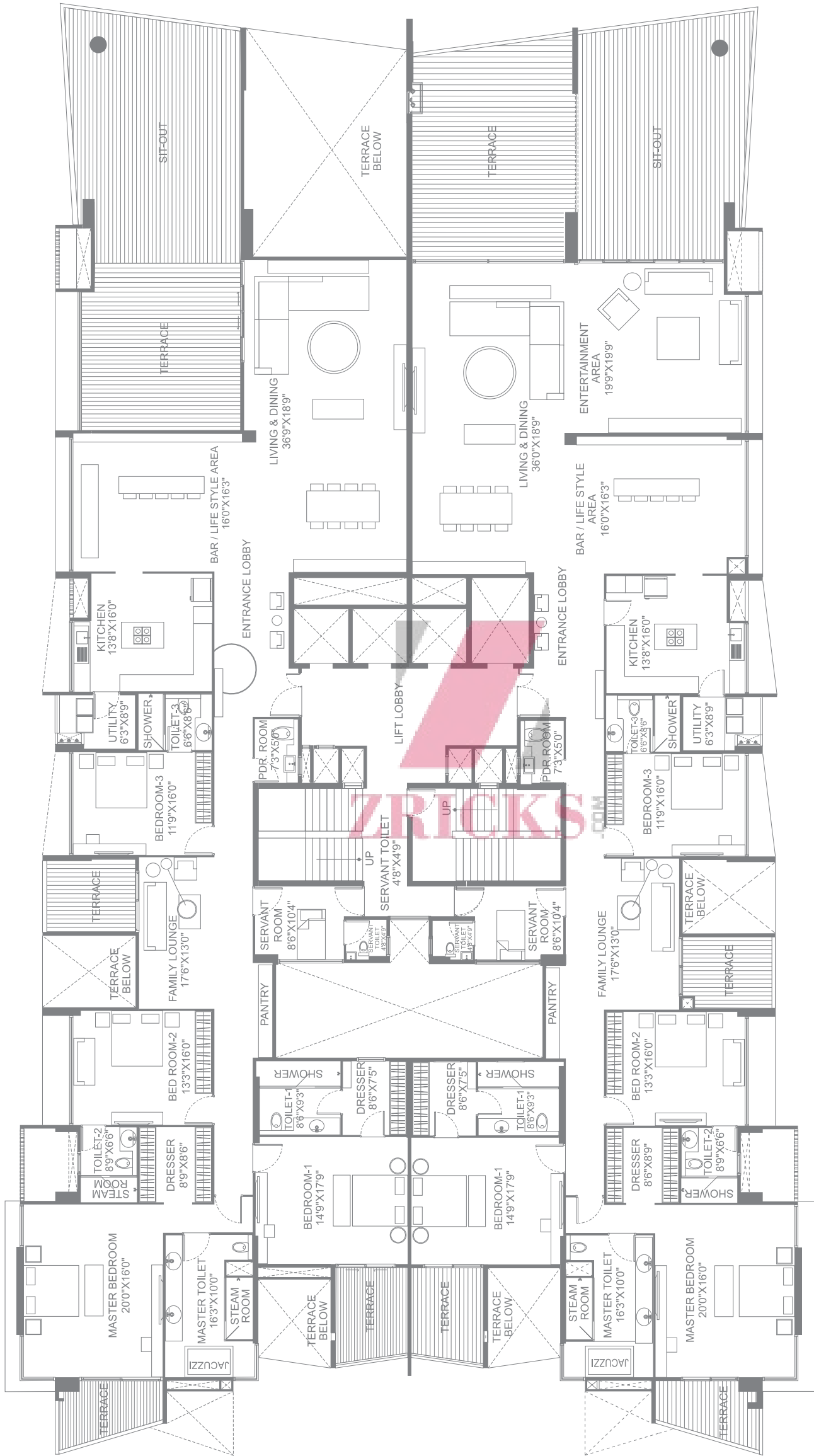
FLAT NO.	FLAT	FLAT AREA	TERRACE AREA	SIT OUT AREA	TOTAL SALEABLE AREA
902	4.5 BHK WITH ENT. ROOM	5080 Sq. ft.	835 Sq. ft.	715 Sq. ft.	6630 Sq. ft.



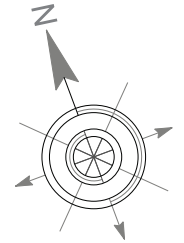
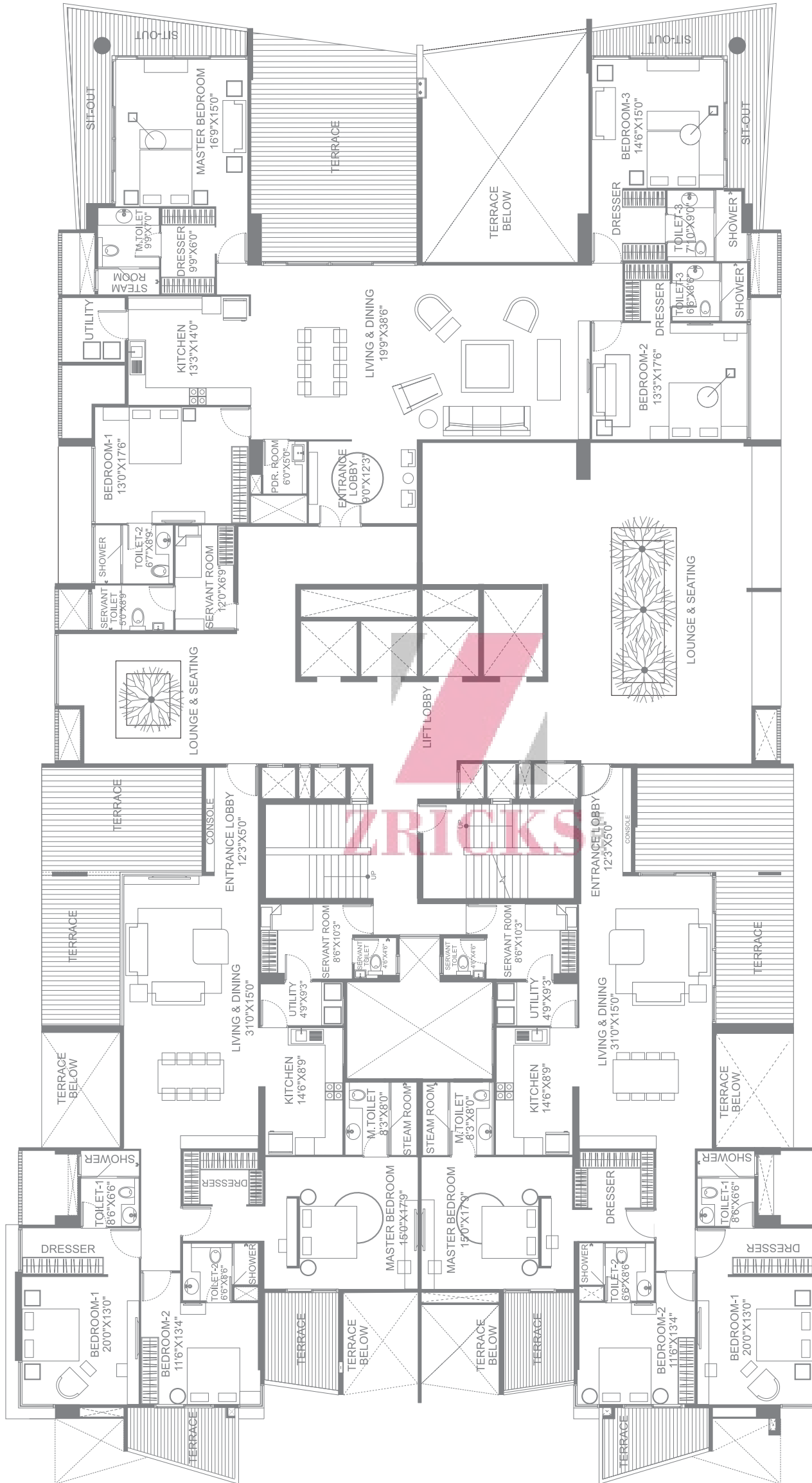


FLAT NO.	FLAT	FLAT AREA	TERRACE AREA	SIT OUT AREA	TOTAL SALEABLE AREA
801, 1201	5.5 BHK	6260 Sq. ft.	830 Sq. ft.	945 Sq. ft.	8035 Sq. ft.

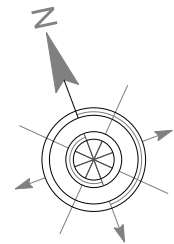
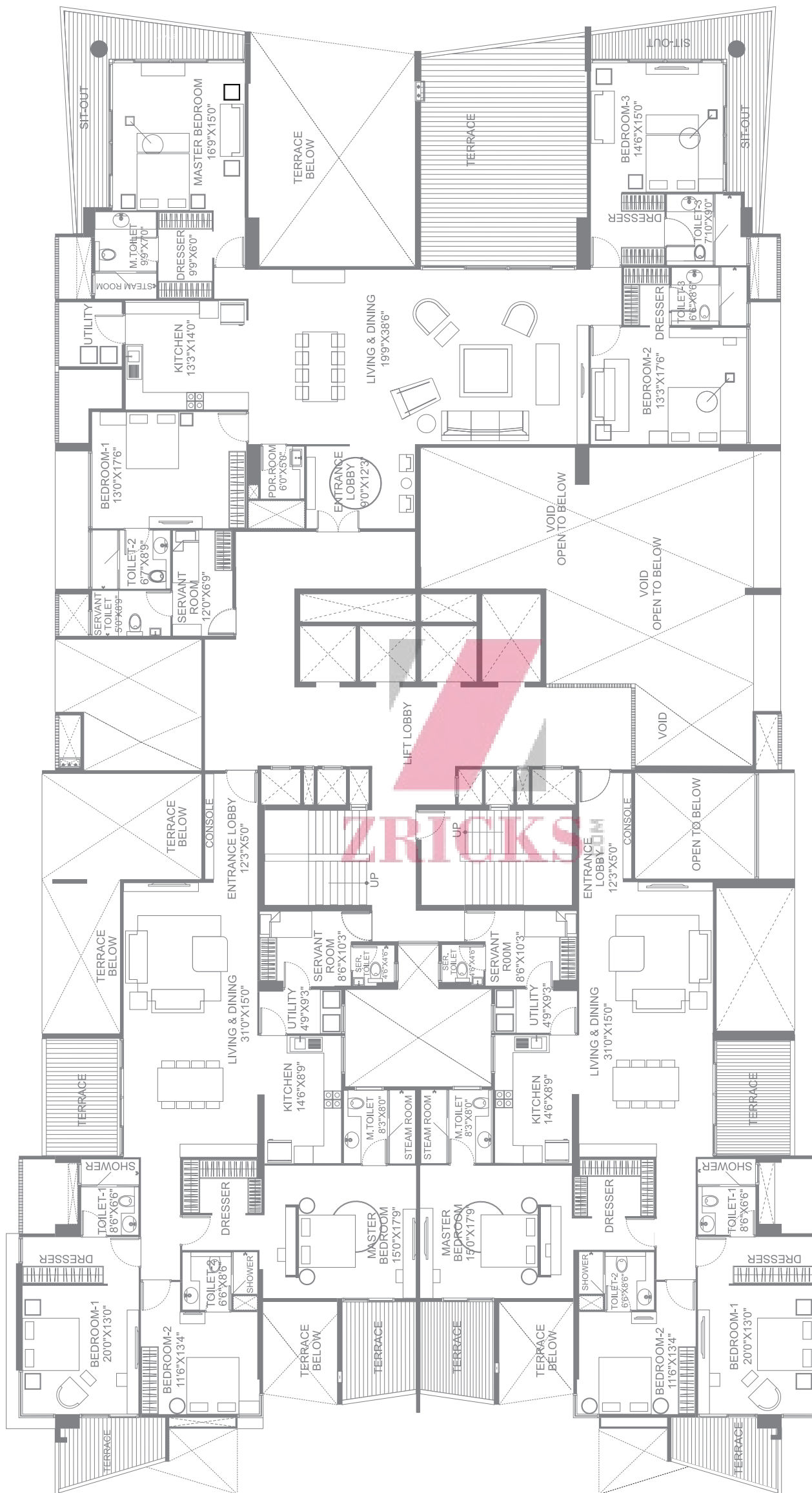
**RIBERA**  
5 BHK WITH SERVANTS' ROOM



**RIBERA**  
TYPICAL FLOOR PLAN



**RIBERA**  
TYPICAL FLOOR PLAN WITH LOUNGE AND SEATING



**RIBERA**  
TYPICAL FLOOR PLAN

**DESIGN ARCHITECTS**

HB Design, Singapore  
Marvel Design, Pune

**STRUCTURAL DESIGN**

Design Werkz Engineering Pvt. Ltd., Pune

**LANDSCAPE ARCHITECTS**

Taylor Brammer Landscape  
Architect PTY LTD, Sydney



**LEGAL ADVISORS**

Rajiv Patel & Associates, Pune



**RIBERA**

Boat Club Road, Pune

Site Address: 14, Boat Club Road, Pune.

Call: +91 937 2000 200 | E-mail: [sales@marvelrealtors.com](mailto:sales@marvelrealtors.com) | [www.marvelrealtors.com](http://www.marvelrealtors.com)  
301-302, Jewel Tower, Lane 5, North Main Road, Koregaon Park, Pune - 411001.

Note: The contents of this brochure are purely conceptual and have no legal binding on us. The developers reserve the right to amend the layout, number of floors, number of flats, elevation, colour scheme, specifications and amenities.

**[www.Zricks.com](http://www.Zricks.com)**