



KALPATARU
PINNACLE

Goregaon (W)



KALPATARU
PINNACLE
Goregaon (W)

Presenting a new height in luxury living – KALPATARU PINNACLE

Mystifying presence, spectacular views, stunning features and an exotic ambience.

The brand new landmark in Goregaon - West that mirrors your personality.

A reflection of your ambitions and your lifestyle – Your Mirror identity.

Experience You. Experience Kalpataru Pinnacle.



**KALPATARU
PINNACLE**
Goregaon (W)

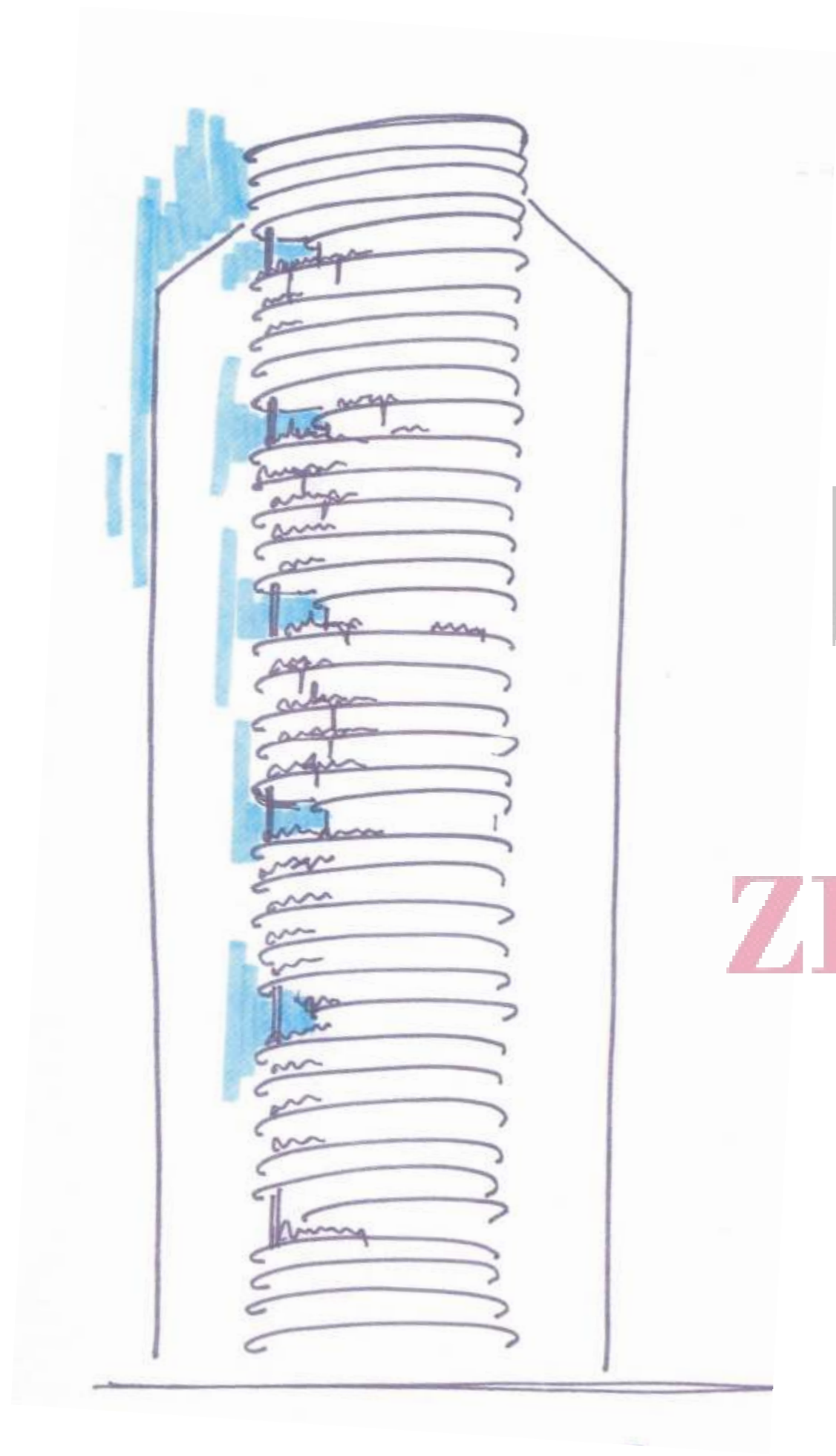
Location Highlights

- ▶ Strategically located in Goregaon West along Goregaon-Mulund Link Road with excellent connectivity to S.V. Road & Western Express Highway.
- ▶ Opposite Inorbit Mall.
- ▶ 5 minutes from Mindspace, the corporate hub.
- ▶ Within 20 minutes from retail facilities like Oberoi Mall & Mega Mall.





KALPATARU
PINNACLE
Goregaon (W)



The Architecture

Designed by eminent architect Sanjay Puri, the unique feature of this multi-storeyed tower is the design that allows each of the three apartments at every floor to not only face the west – capitalising on the westerly breeze prevalent in Mumbai throughout the year, but also to enjoy dramatic views of the creek.



KALPATARU
PINNACLE
Goregaon (W)

Pinnacle of Lifestyle

Rising high and designed to perfection, the lifestyle at Kalpataru Pinnacle is meant for the privileged few - offering stunning contemporary architecture and spaciouly planned apartments. Designed with every conceivable luxury, Kalpataru Pinnacle truly represents the pinnacle of lifestyle.

Located at Goregaon - West, Kalpataru Pinnacle offers its residents the privilege of living in the heart of the city with shopping malls, schools, colleges and hospitals in close proximity and easy connectivity to S.V. Road and Western Express Highway.

Artist's Impression



KALPATARU
PINNACLE
Goregaon (W)

Epitome of Luxury

Luxury awaits you within every space in Kalpataru Pinnacle; from the premium facilities, panoramic views and lush landscaping to the exquisite interiors

- ▶ Spacious 3BHK, 4BHK, duplex apartments & penthouses
- ▶ Elegant rooftop swimming pool
- ▶ Boutique clubhouse
- ▶ Grand 30 feet high air-conditioned entrance lobby
- ▶ Scalable home automation system
- ▶ High-end security system



Artist's Impression

Complex Layout



KALPATARU
PINNACLE
Goregaon (W)



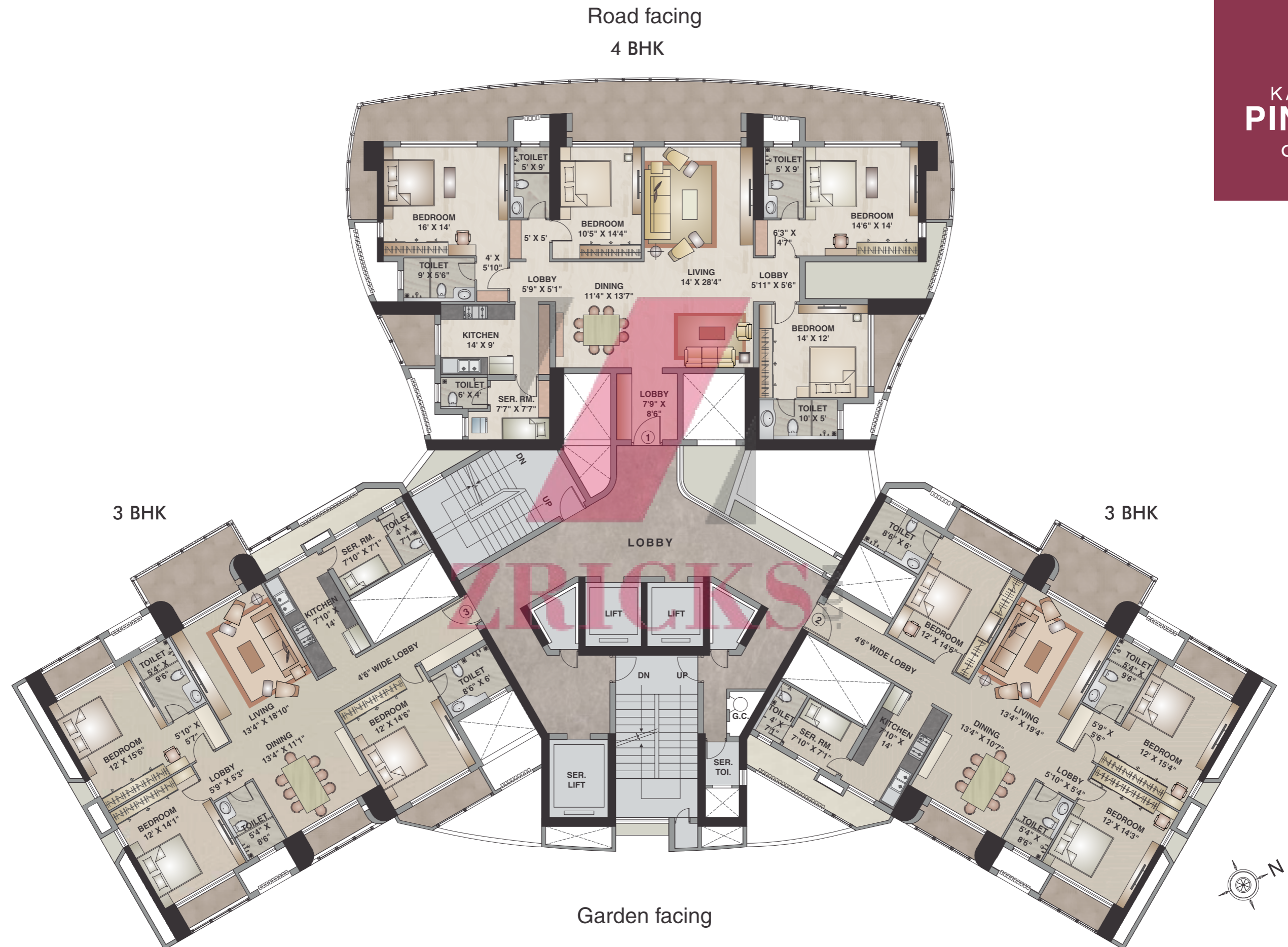
N
Tentative Complex Layout

- | | | |
|---------------------------|---------------------|------------------------|
| ① Grand entrance drop-off | ⑤ Toddlers' pool | ⑨ Children's play area |
| ② Visitor's parking | ⑥ Open air Jacuzzi | ⑩ Seating alcove |
| ③ Clubhouse | ⑦ Squash court | |
| ④ Swimming pool | ⑧ Landscaped garden | |

Typical Floor Plan



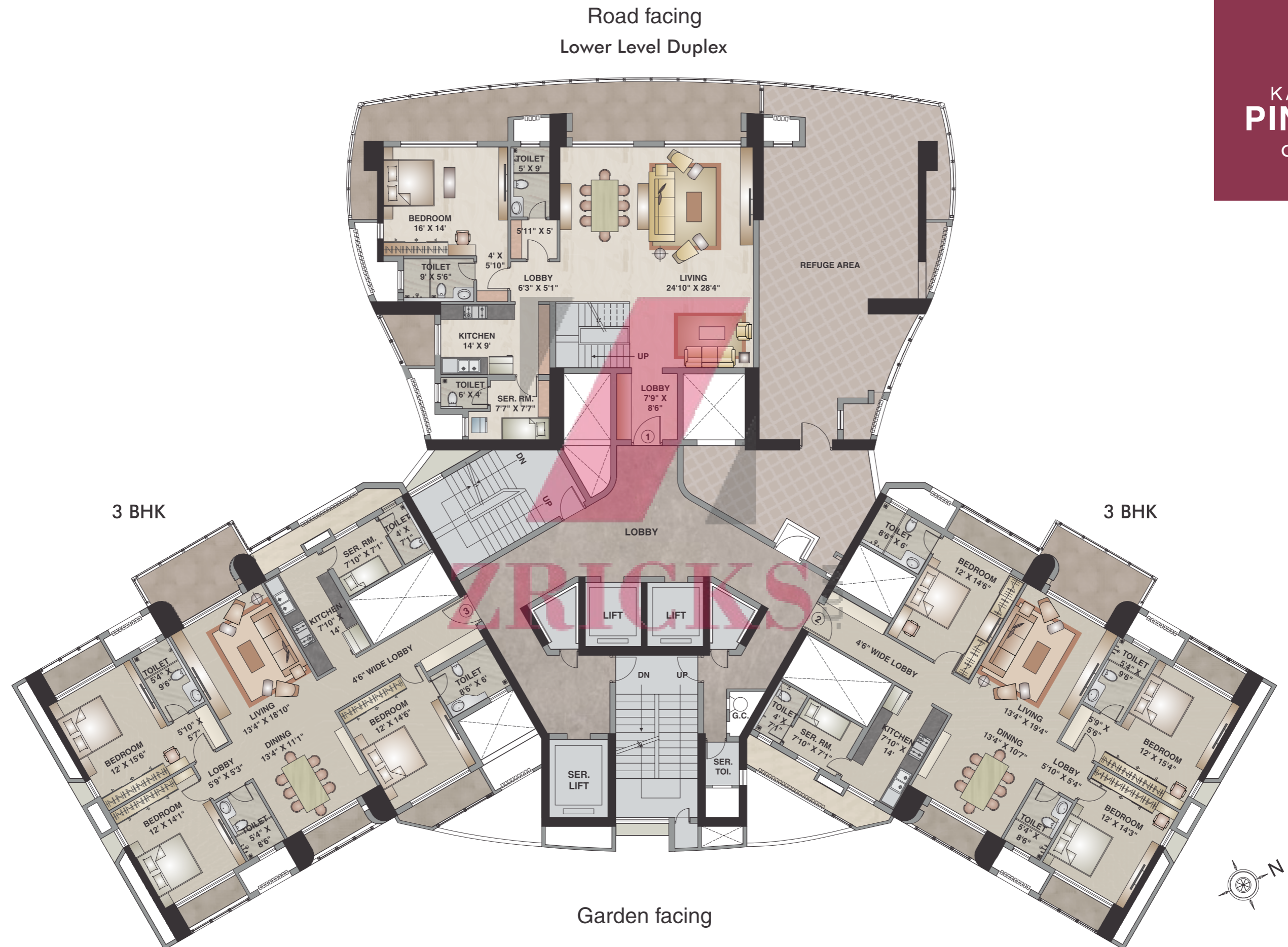
KALPATARU
PINNACLE
Goregaon (W)



Lower Level Duplex



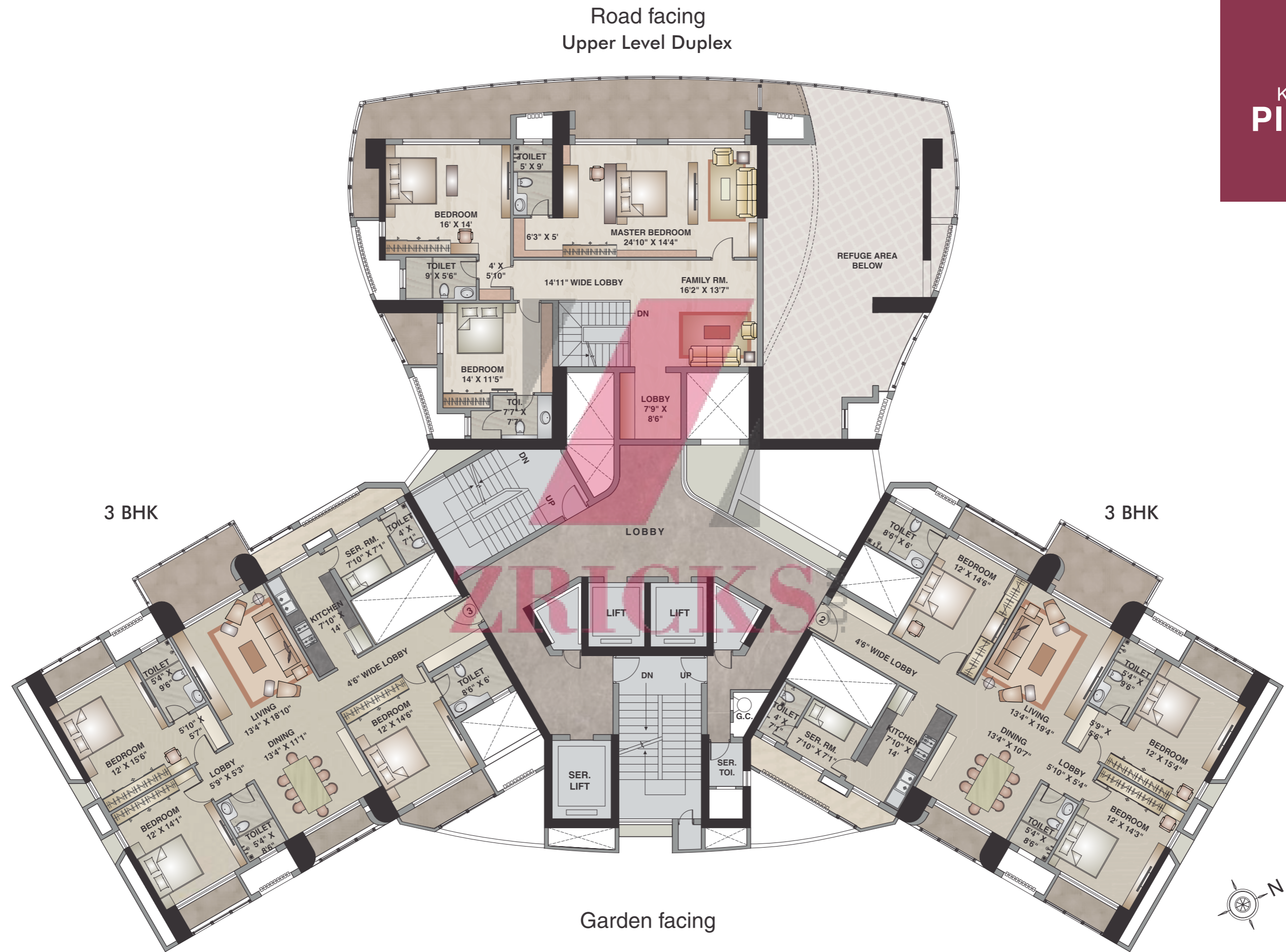
KALPATARU
PINNACLE
Goregaon (W)

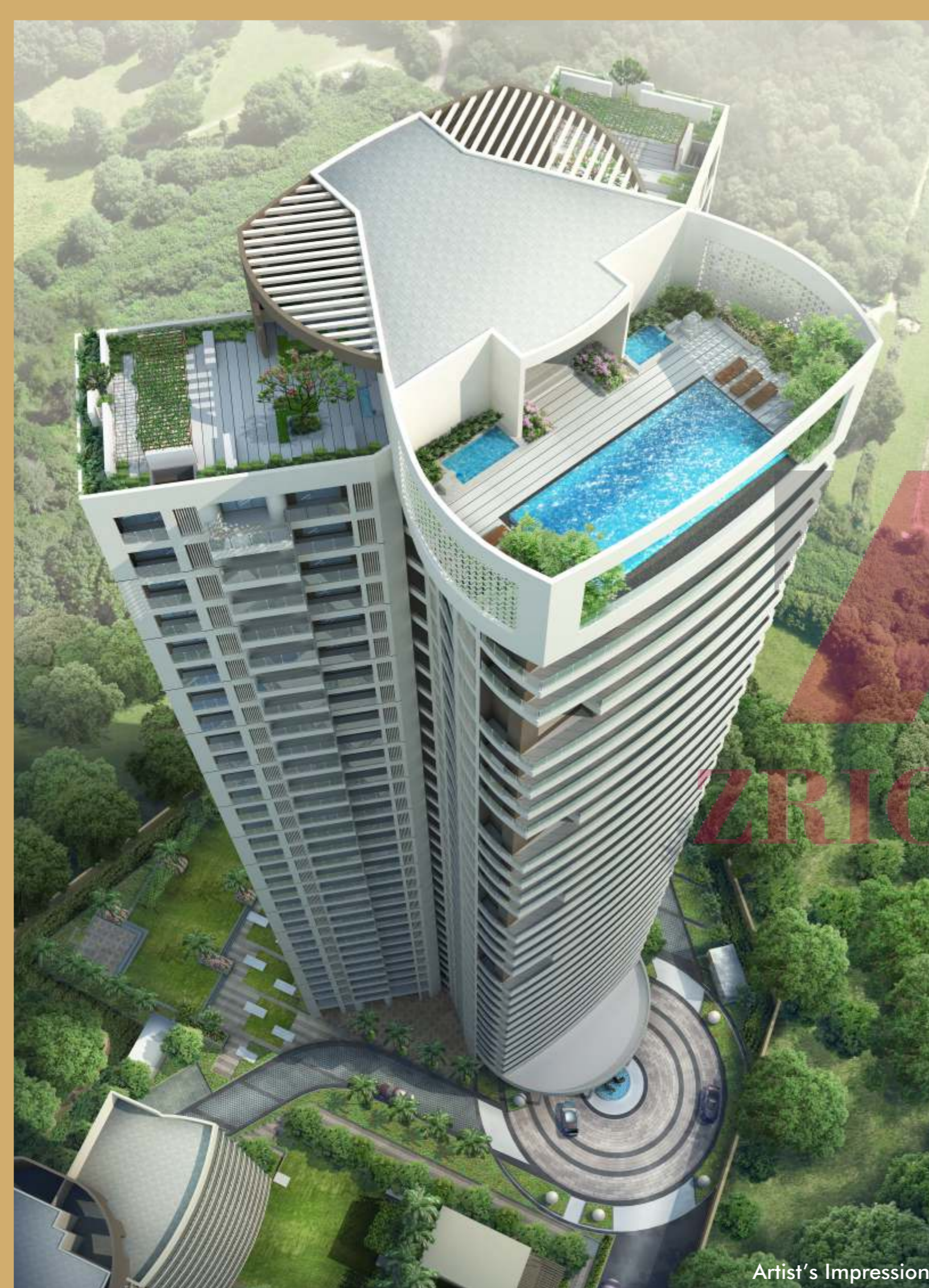


Upper Level - Duplex



KALPATARU
PINNACLE
Goregaon (W)





Artist's Impression



Project Highlights

- Contemporary designed multi-storeyed tower
- Grand 30' high air-conditioned entrance lobby with premium finishes
- Elegant rooftop temperature controlled infinity swimming pool with toddlers' pool & open air Jacuzzi
- Gymnasium with state-of-the-art equipments
- Lush landscaped podium garden designed by international architect
- Rain Water harvesting and Sewage Water Recycling Plant (SWRP)
- High speed elevators including service elevator with Automatic Rescue Device (ARD)
- 2 levels of ample car parking
- Washroom facility for domestic help at each landing
- Driver's room and car calling facility
- Garbage chute for easy disposal of waste



KALPATARU
PINNACLE
Goregaon (W)



Apartment Features

- Spacious 3BHK, 4BHK, duplex apartments complemented with 11 feet 6 inch floor-to-floor height
- West-oriented apartments with optimum cross ventilation
- Designed with emphasis on natural light and uninterrupted views
- Imported marble flooring adorning the apartment
- Elegant entrance door and internal doors finished with veneer / laminates
- Synchronised light at the entrance door
- French windows with glass railing in every apartment
- Energy and sound efficient window glazing system
- Internal walls finished in acrylic paint
- Top notch electrical switches
- Cable & television points in living room & bedrooms
- Concealed copper wiring with modular switches
- MCBs & ELCBs
- Provision for air-conditioning with space for compressor unit





KALPATARU
PINNACLE
Goregaon (W)



Kitchen Amenities

- Well designed modular kitchen equipped with hob, chimney, microwave & oven
- Quartz based marble flooring
- Quartz based marble platform with twin bowl scratch resistant stainless steel sink and drain board
- Quartz based marble dado above the platform
- Additional service platform
- Provision for water purifier
- Attached servant's room with toilet

Bathroom Amenities

- Imported marble flooring and dado up to door height
- 3 fixture bathroom embellished with the finest imported bath and sanitary fitments
- Overhead shower / rain shower and diverter with spout
- Body shower in master toilet
- Hot & cold water mixer in wash-basins
- Wall mounted W.C.
- Mirror in bathrooms
- Storage water heater
- Naturally ventilated bathrooms with an exhaust fan





KALPATARU
PINNACLE
Goregaon (W)



Technology Features

- Wi-Fi enabled project
- Master bedroom equipped with multimedia panel
- Home automation system in living, dining and master bedroom, expandable to other rooms

Safety & Security Features

- Seismic resistant structure
- 24 hour surveillance by CCTV covering designated areas including children's play area
- 4 tier advanced and integrated safety & security systems
- Advanced fire-fighting systems
- Sprinkler system & mechanical ventilation to the basement
- Video door phone and integrated intrusion alarm system
- Secured kitchen equipped with CNG, LPG and heat/smoke detector
- Generator back-up for lift & designated common areas



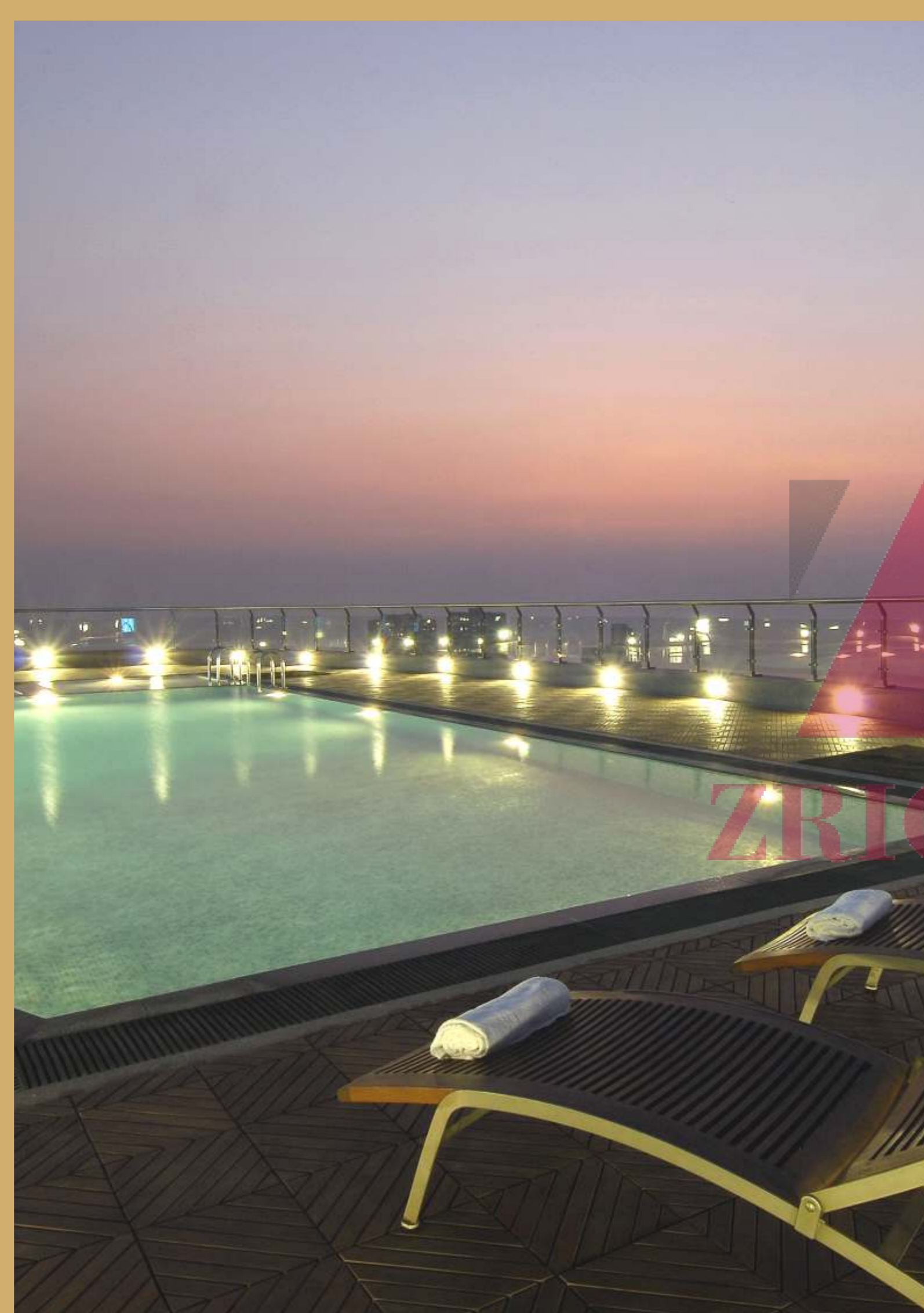


KALPATARU
PINNACLE
Goregaon (W)



Leisure Features

- Clubhouse with world class gymnasium & state-of-the-art equipments
- Large swimming pool with toddlers' pool and open air Jacuzzi
- Relaxing spa with steam and massage room
- Multi-function party lounge over looking the landscape
- Mini-theatre
- Squash court
- Children's play area
- Indoor games area





Living Room



Dining Area



Kitchen



Master Bedroom



Guest Bedroom



Children's Bedroom



Bathroom



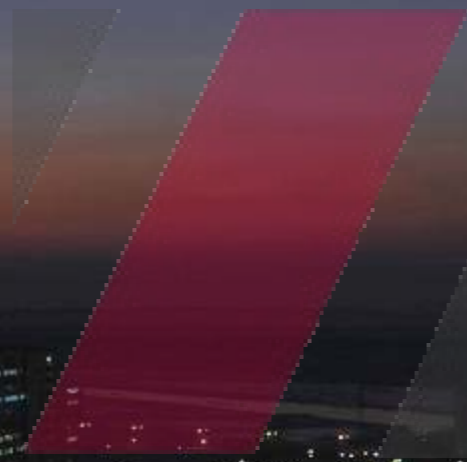
KALPATARU
PINNACLE
Goregaon (W)



Creek View



KALPATARU
PINNACLE
Goregaon (W)



ZRICKS

Night View



Developers: Kalpataru Retail Ventures Pvt. Ltd.

Site Address: Kalpataru Pinnacle, Opp. Inorbit Mall, Goregaon - Mulund Link Road, Goregaon (W), Mumbai - 400 104.

Head Office: 101, Kalpataru Synergy, Opp. Grand Hyatt, Santacruz (E), Mumbai - 400 055. Tel: +91 22 3064 3065, Fax: +91 22 3064 3131.

Email: sales@kalpataru.com, **Visit:** www.kalpataru.com

The above amenities are indicative, based on the construction of the building as is proposed at present and it is issued in good faith, subject to the approval of the authorities or in the interest of the continuing improvement and development of the Complex, the Promoters/Developers reserve the right to alter the layout, plans, specifications or features without prior notice or obligation. The details contained in the leaflets/brochures or any other printed material, are only indicative and artistic imagination, may not be exact or accurate, and the same does not form either the basis or part of the offer or contract. Guidelines are enforced for not allowing grills, flower pots etc. to be fixed outside windows or any changes to be made in external elevations. The dimensions mentioned on floor plans are in feet. They can be made available in metric scale, on request. This property is secured with Housing Development Finance Corporation Ltd. The No Objection Certificate / Permission would be provided, if required.