



KALPATARU
SPLENDOUR
.....WAKAD

ZRICKS.COM











Project Highlights

- A complex of multi-storeyed towers
- Spacious 2, 2.5 and 3 BHK apartments with terrace
- Clubhouse with gymnasium, party lounge & indoor games room
- Swimming pool and toddlers' pool
- Landscaped gardens and children's play area

Location Highlights



- Situated in close proximity to Hinjewadi IT Park and easily accessible from Mumbai-Pune Expressway
- Distance from Kalpataru Splendour to:
 - Mumbai-Pune Expressway - 1 km
 - Wakad Police Station - 1 km
 - Dange Chowk - 2 km
 - D Mart super market - 2 km
 - Hinjewadi (Phase I) - 3.5 km
 - Birla Hospital - 3.5 km
 - NICMAR Campus - 3.5 km
 - Chinchwad Railway Station - 6.5 km
 - Aundh - 6.5 km

Layout Plan



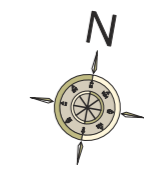
Wing D - 1st Floor Plan



Wing D - 2nd Floor Plan



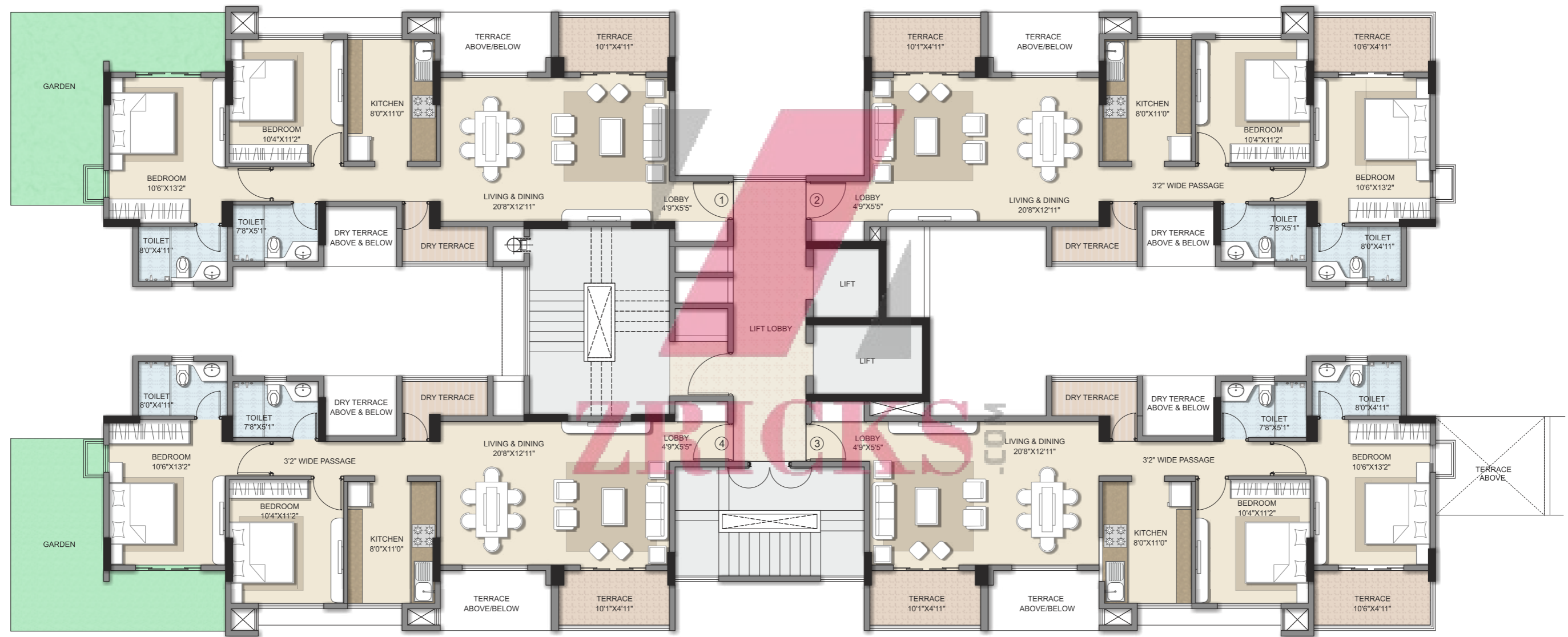
Wing D - 3rd, 5th, 7th, 9th & 11th Floor Plan



Wing D - 4th, 6th, 10th & 12th Floor Plan



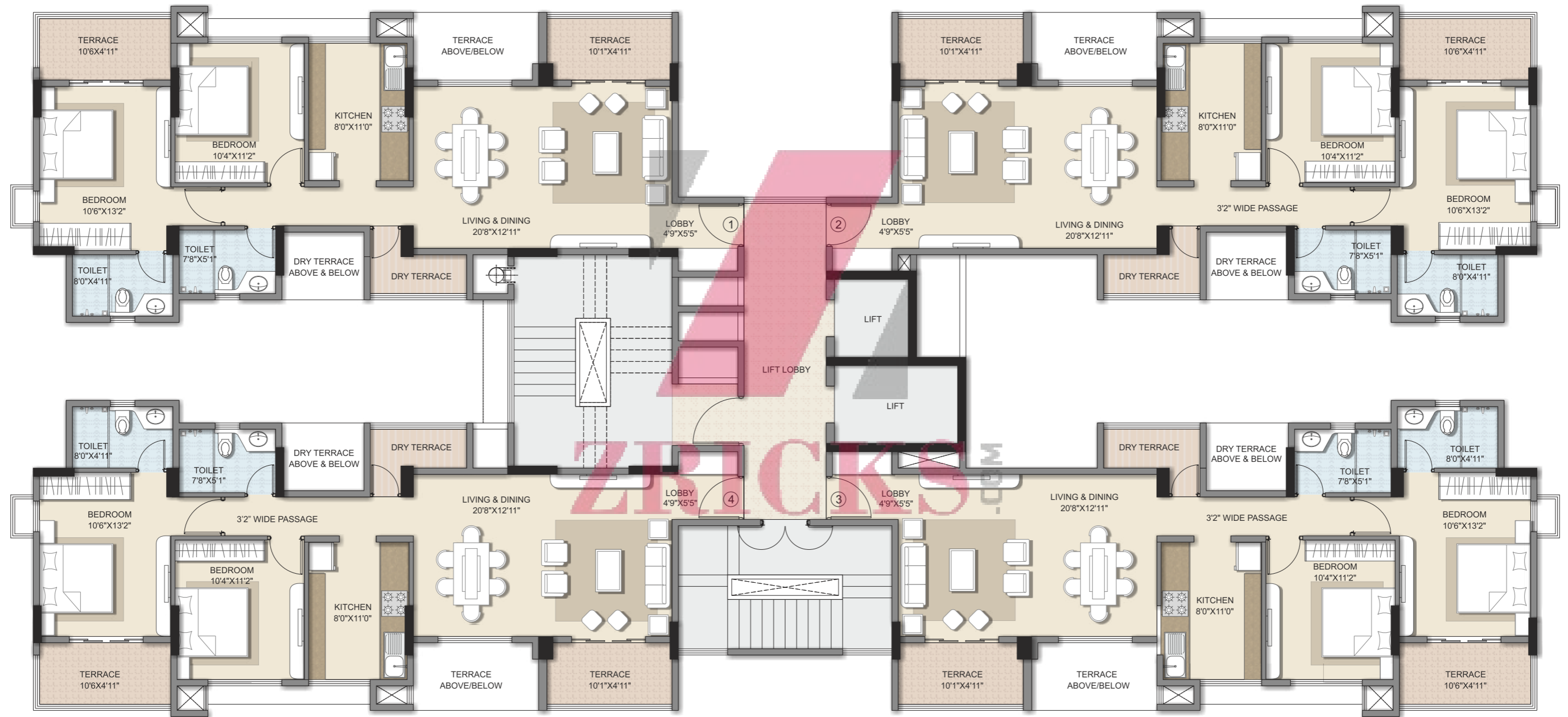
Wing E - 1st Floor Plan



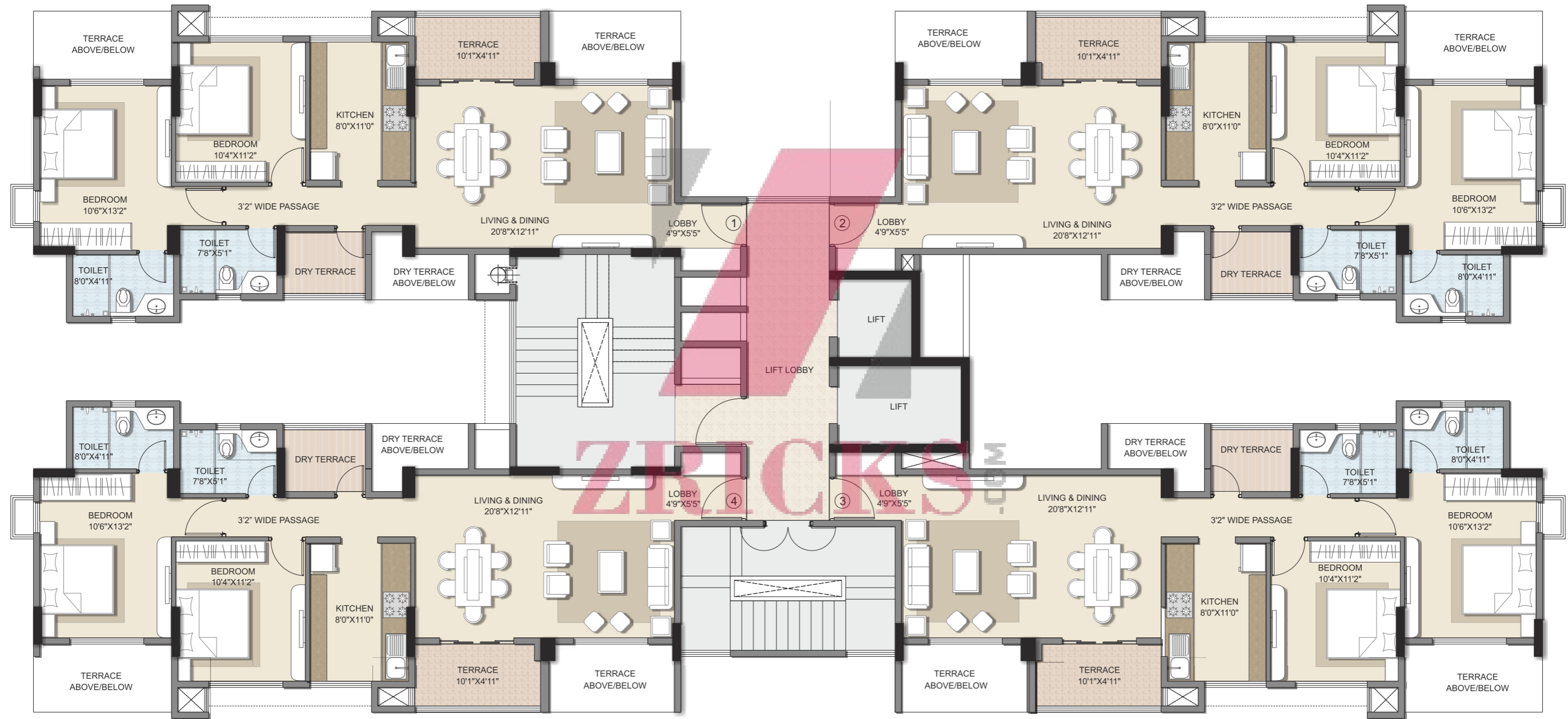
Wing E - 2nd Floor Plan



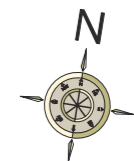
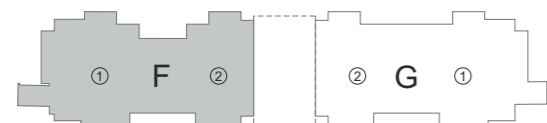
Wing E - 3rd, 5th, 7th, 9th & 11th Floor Plan



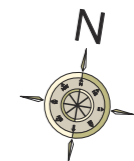
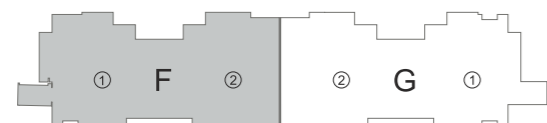
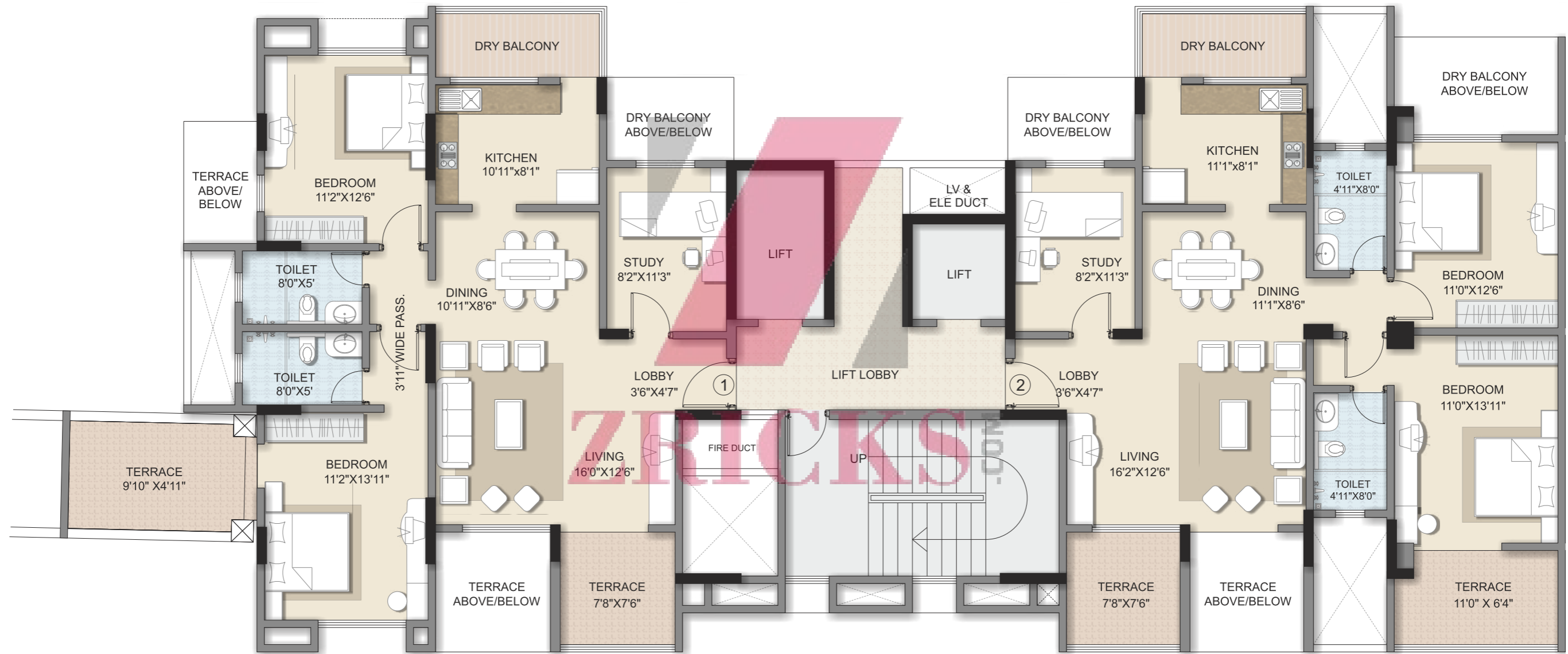
Wing E - 4th, 6th, 10th & 12th Floor Plan



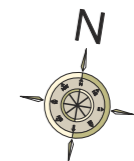
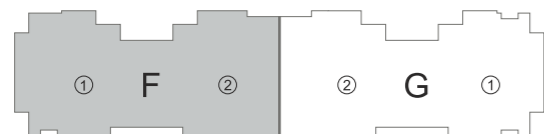
Wing F - 1st Floor Plan



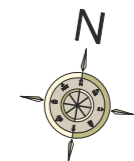
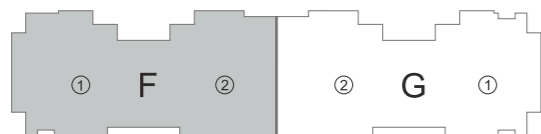
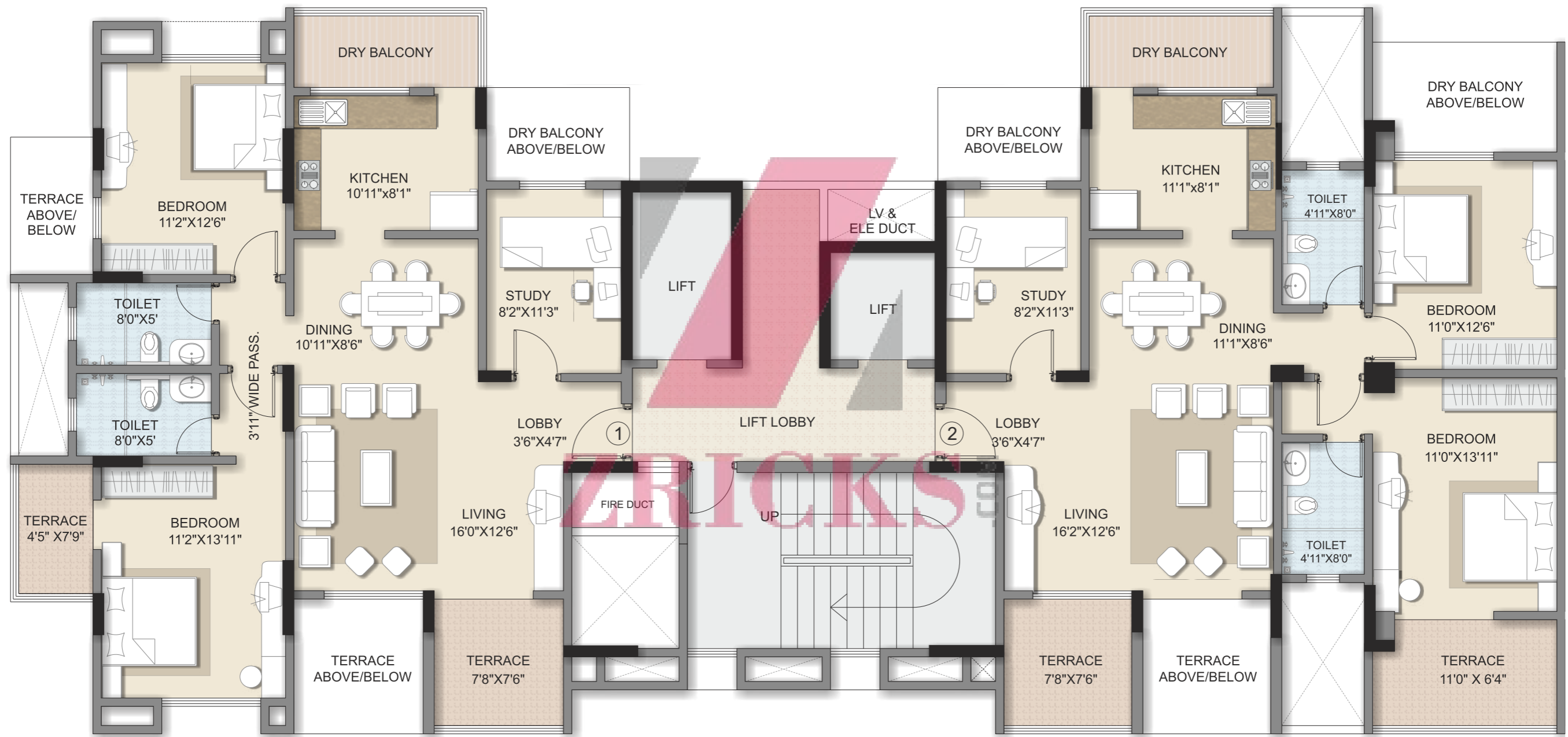
Wing F - 2nd Floor Plan



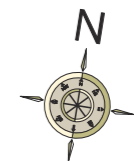
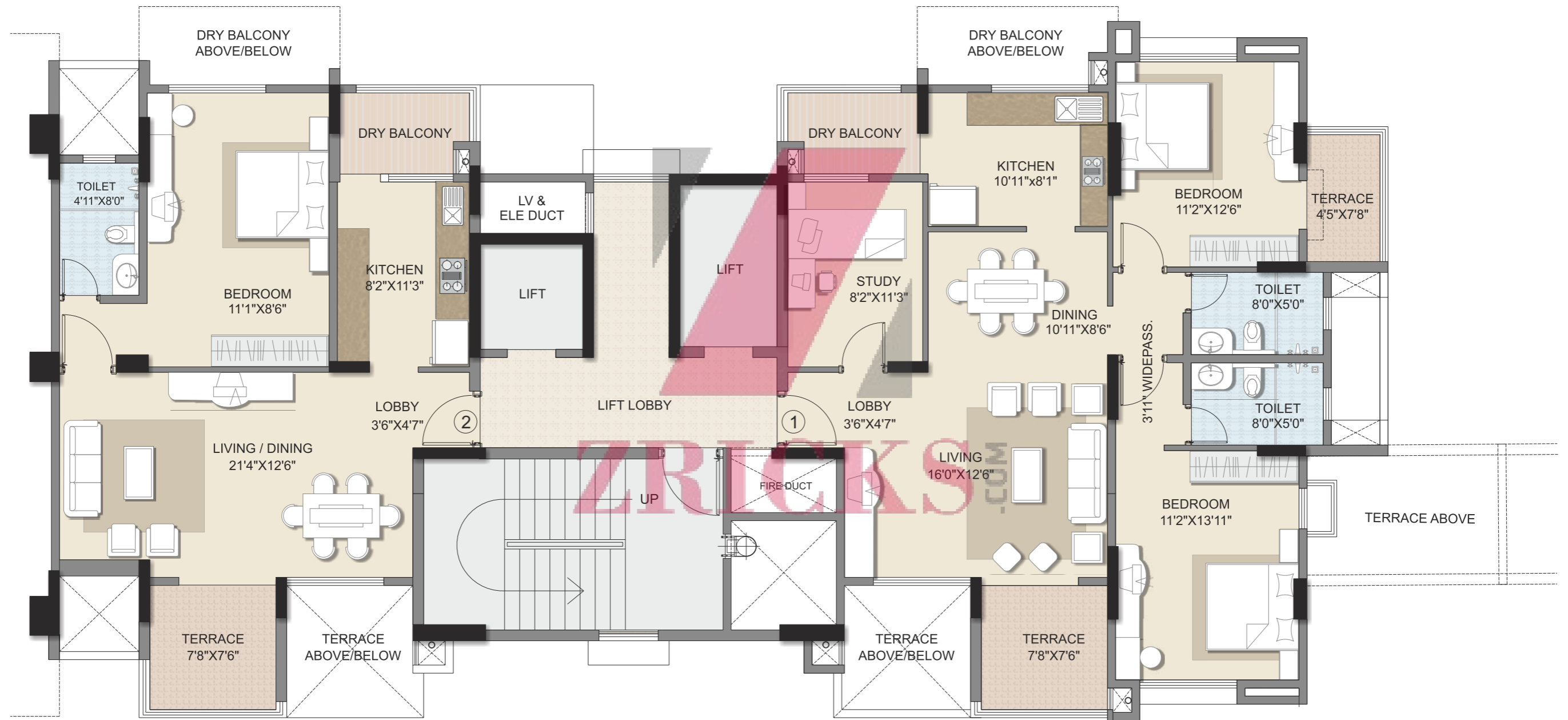
Wing F - 3rd, 5th, 7th & 9th Floor Plan



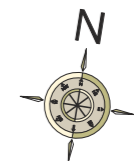
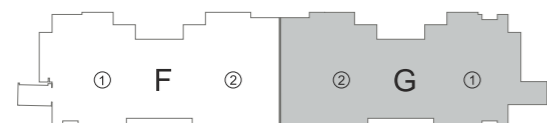
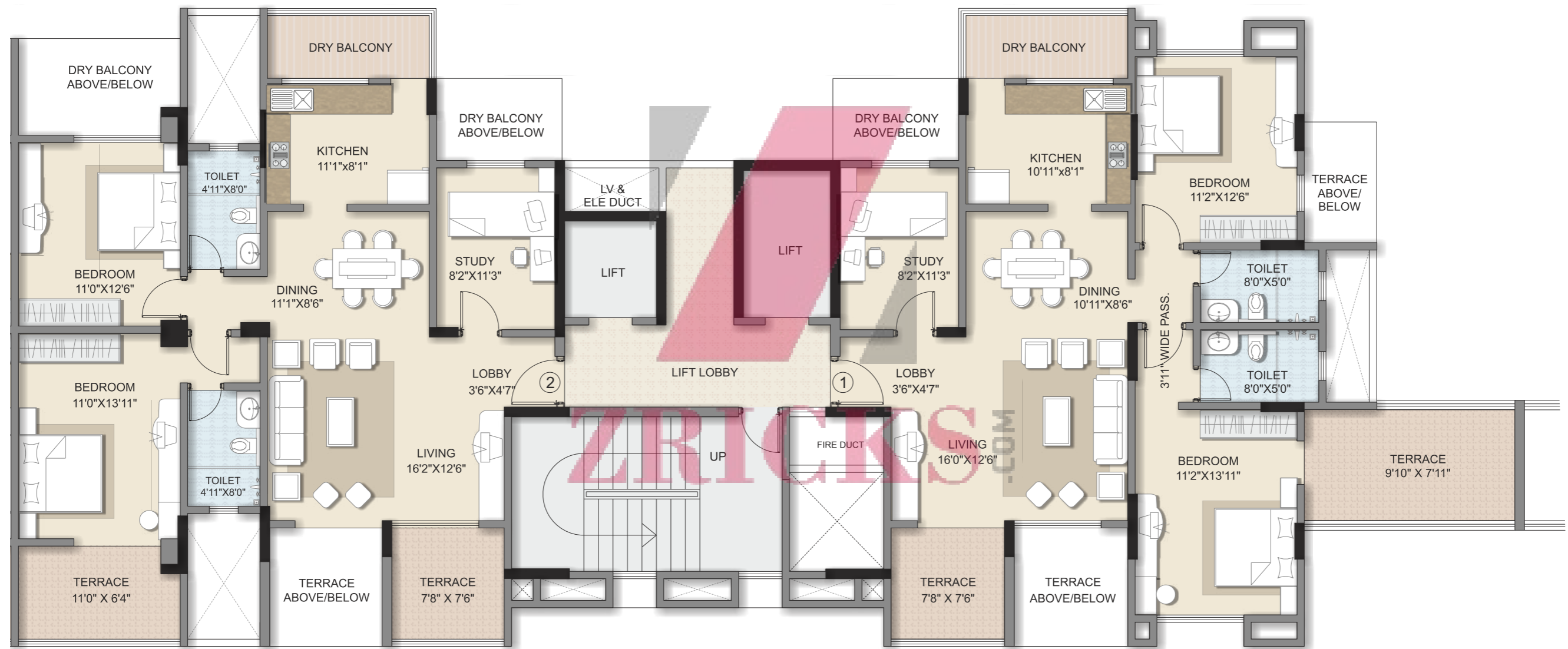
Wing F - 4th, 6th, 8th & 10th Floor Plan



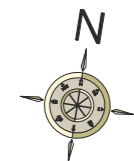
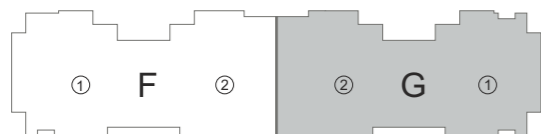
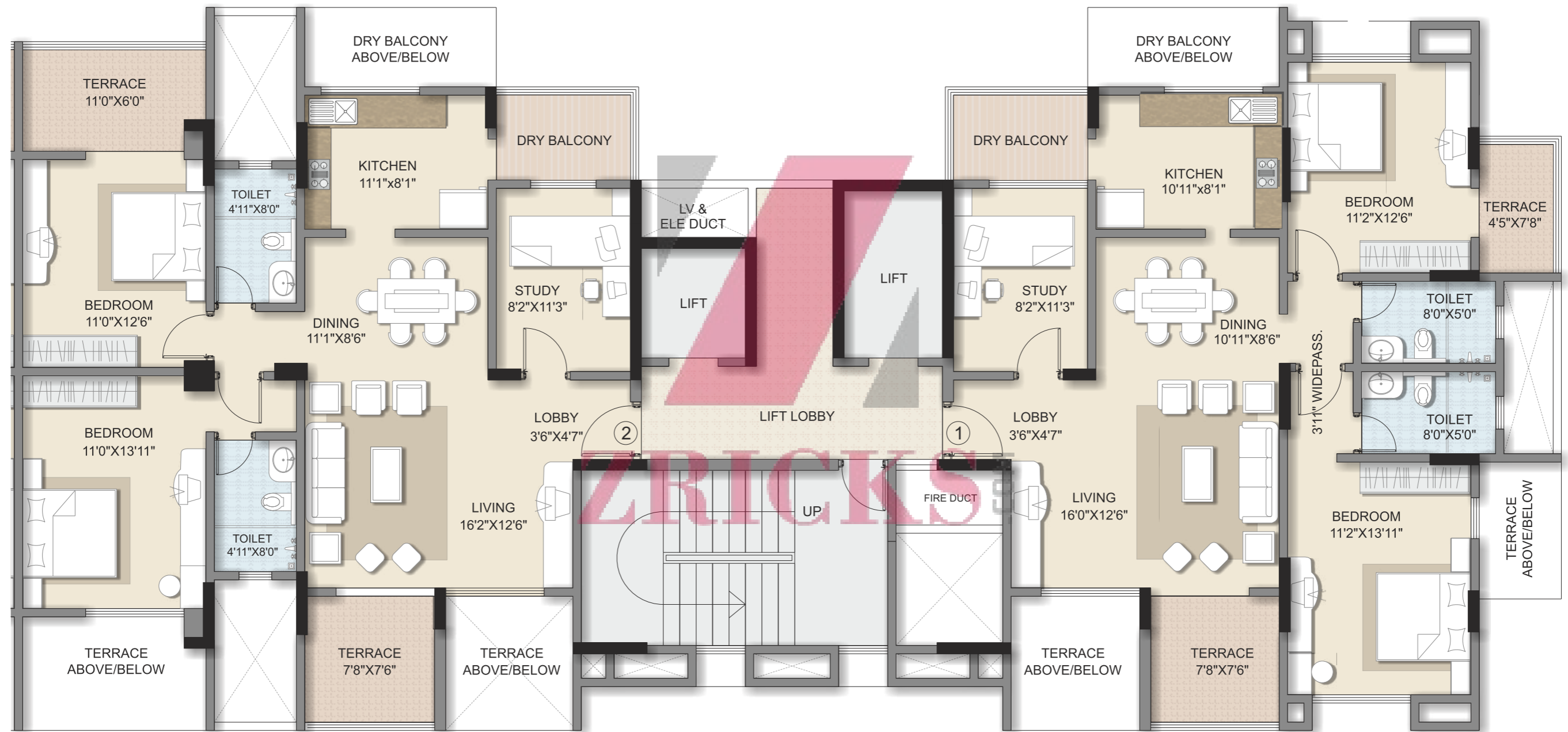
Wing G - 1st Floor Plan



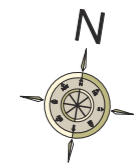
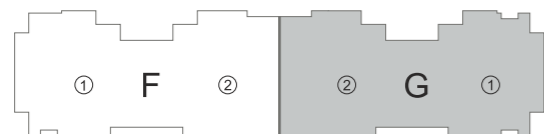
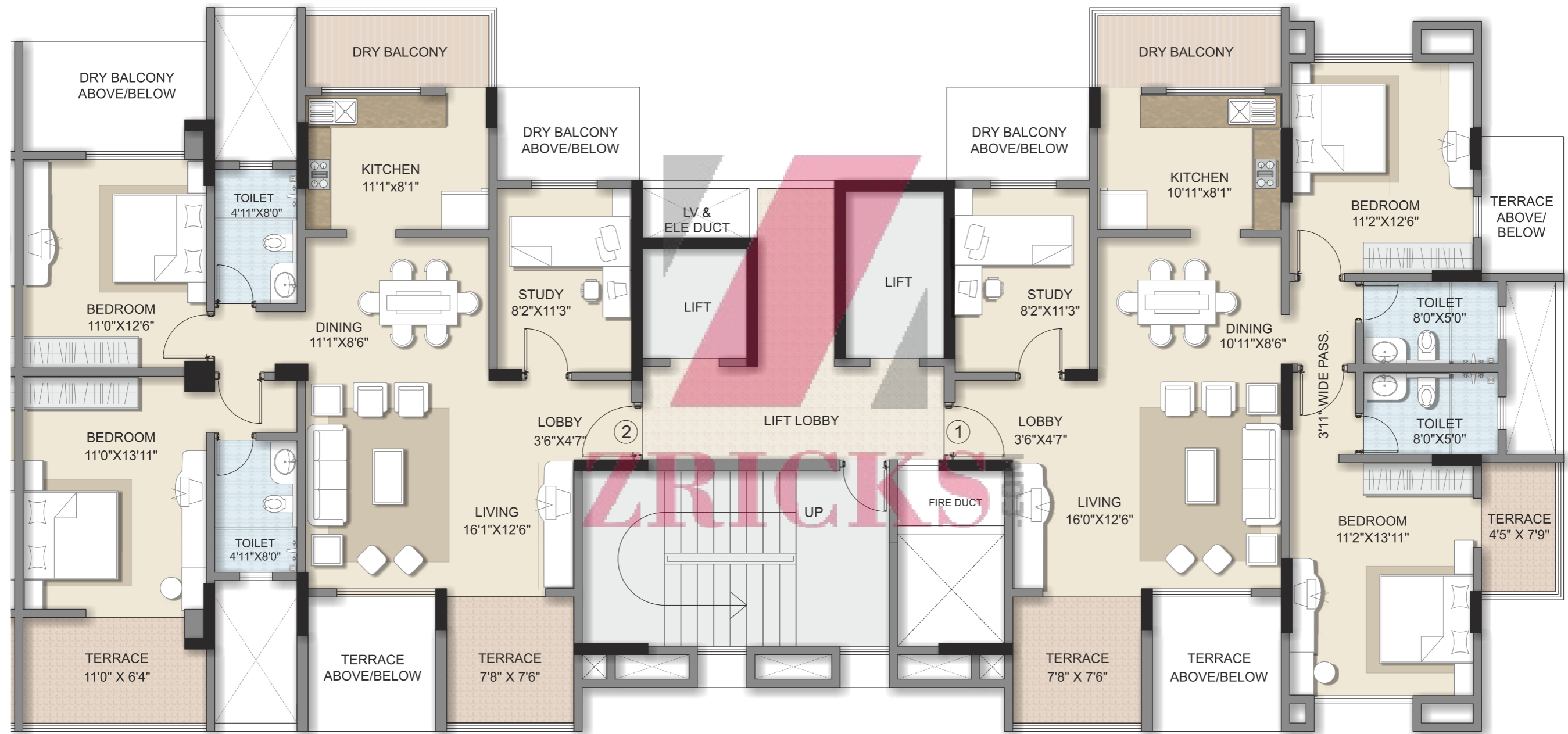
Wing G - 2nd Floor Plan



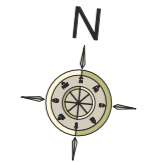
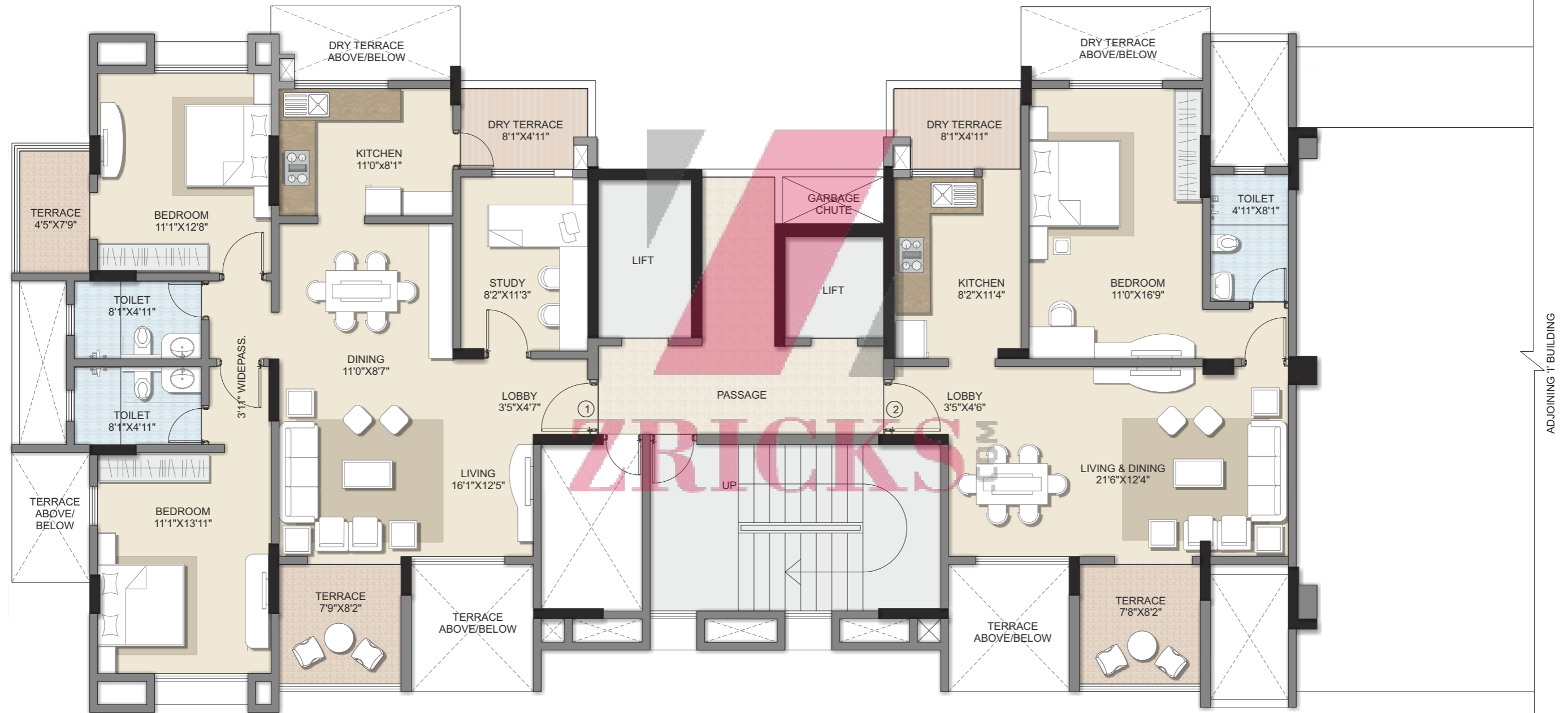
Wing G - 3rd, 5th, 7th & 9th Floor Plan



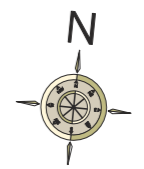
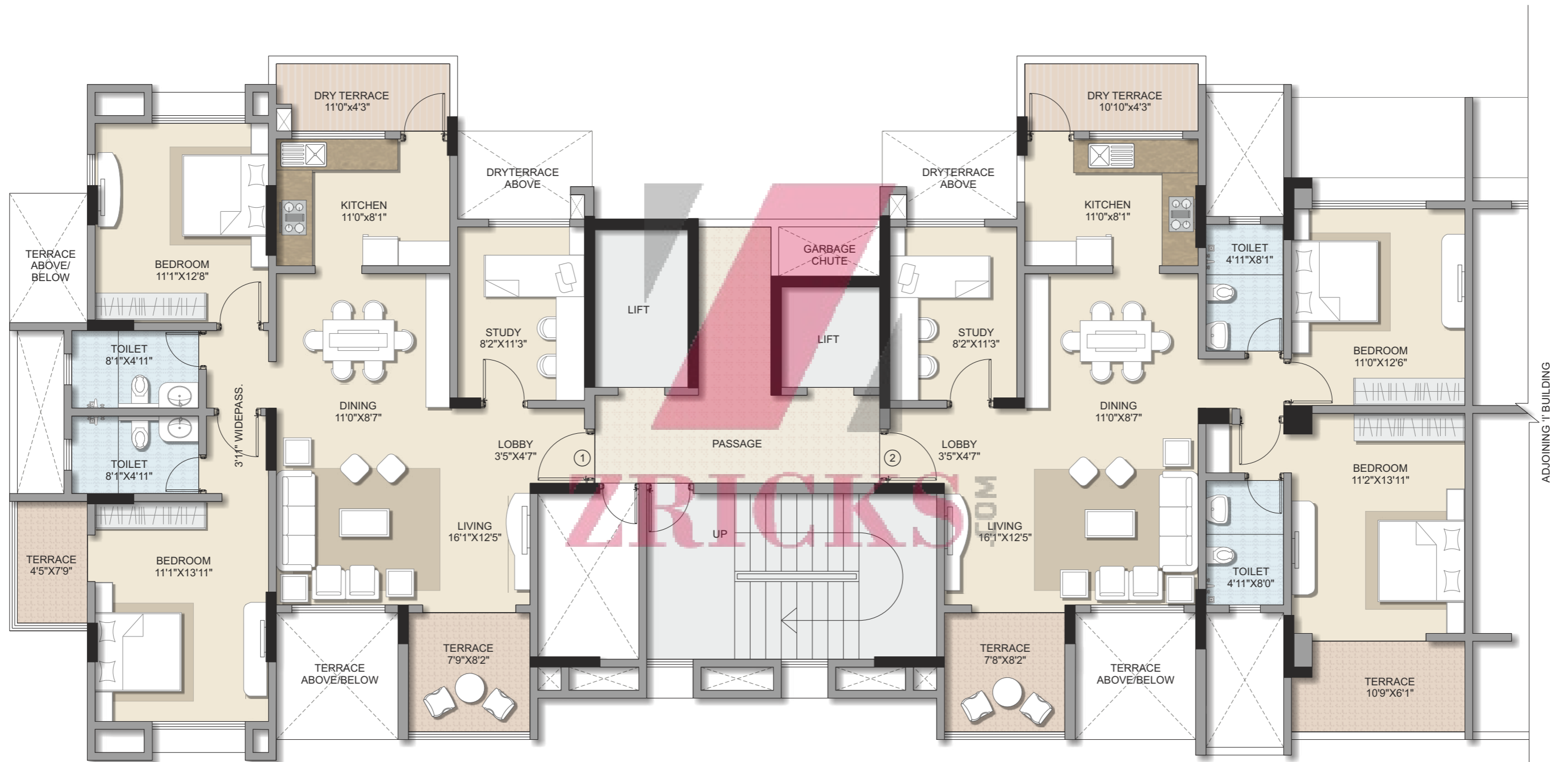
Wing G - 4th, 6th, 8th & 10th Floor Plan



Wing H - 1st Floor Plan



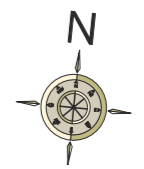
Wing H - 2nd, 4th, 6th, & 10th Floor Plan



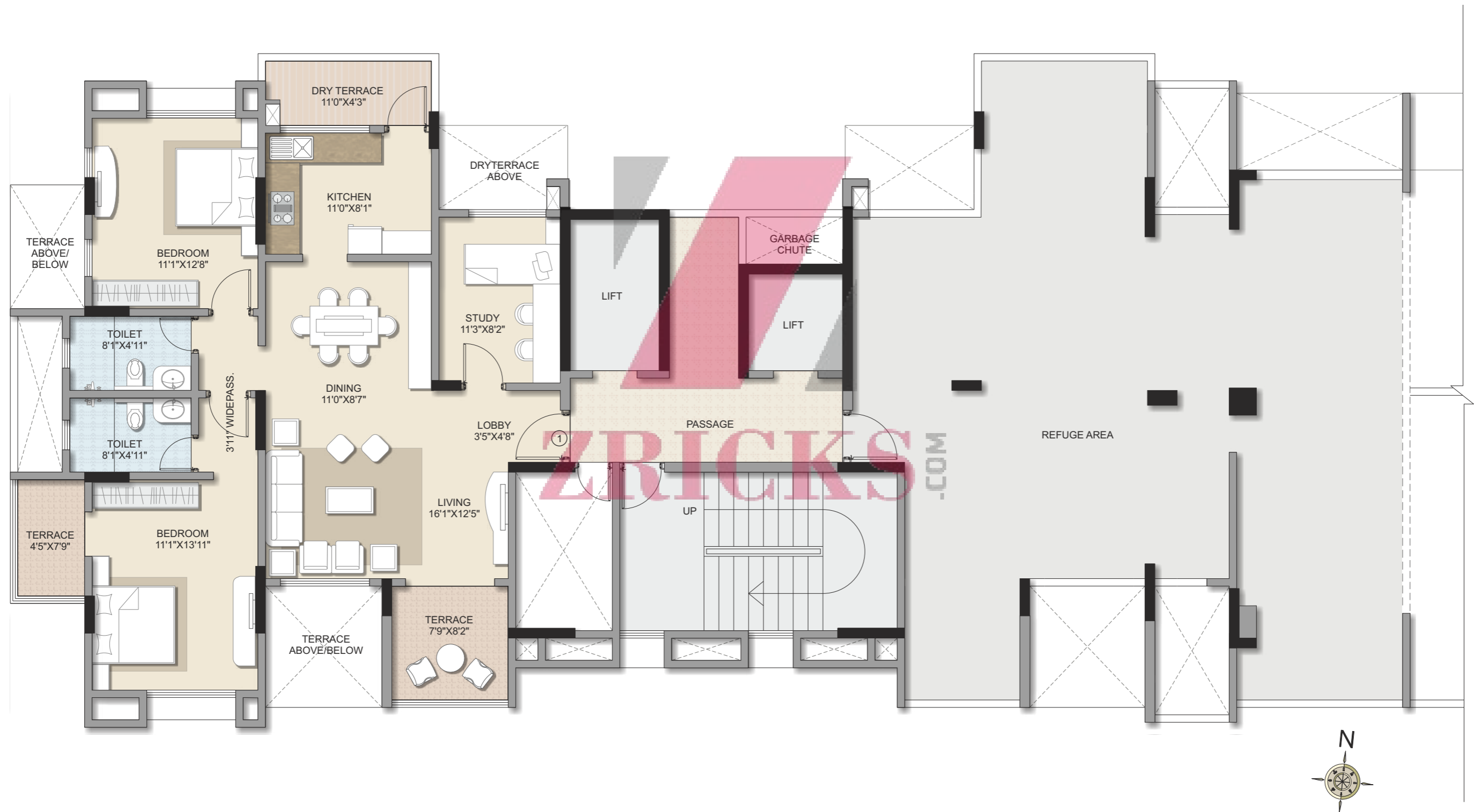
Wing H - 3rd, 5th & 7th Floor Plan



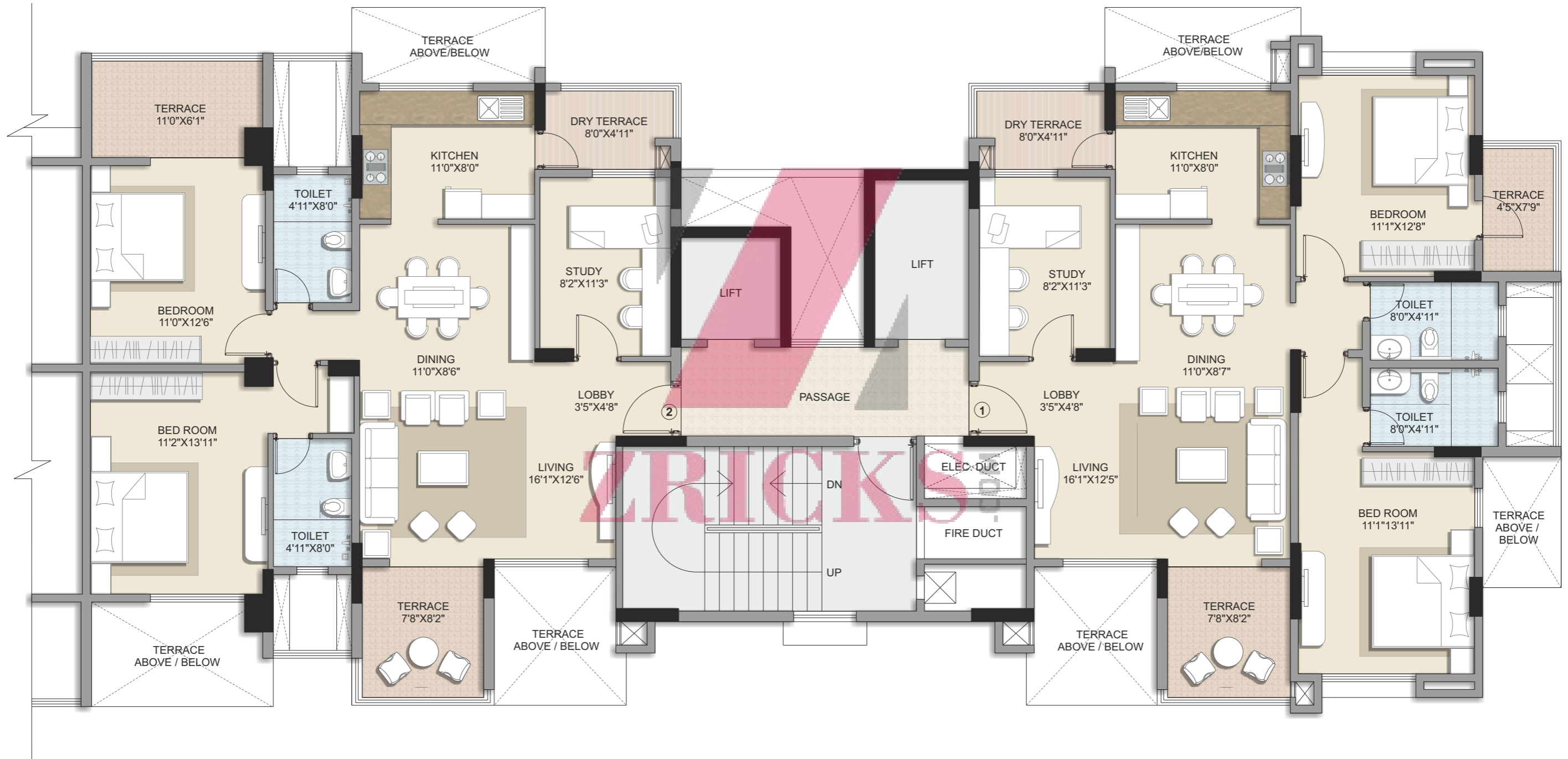
ADJOINING 'I' BUILDING



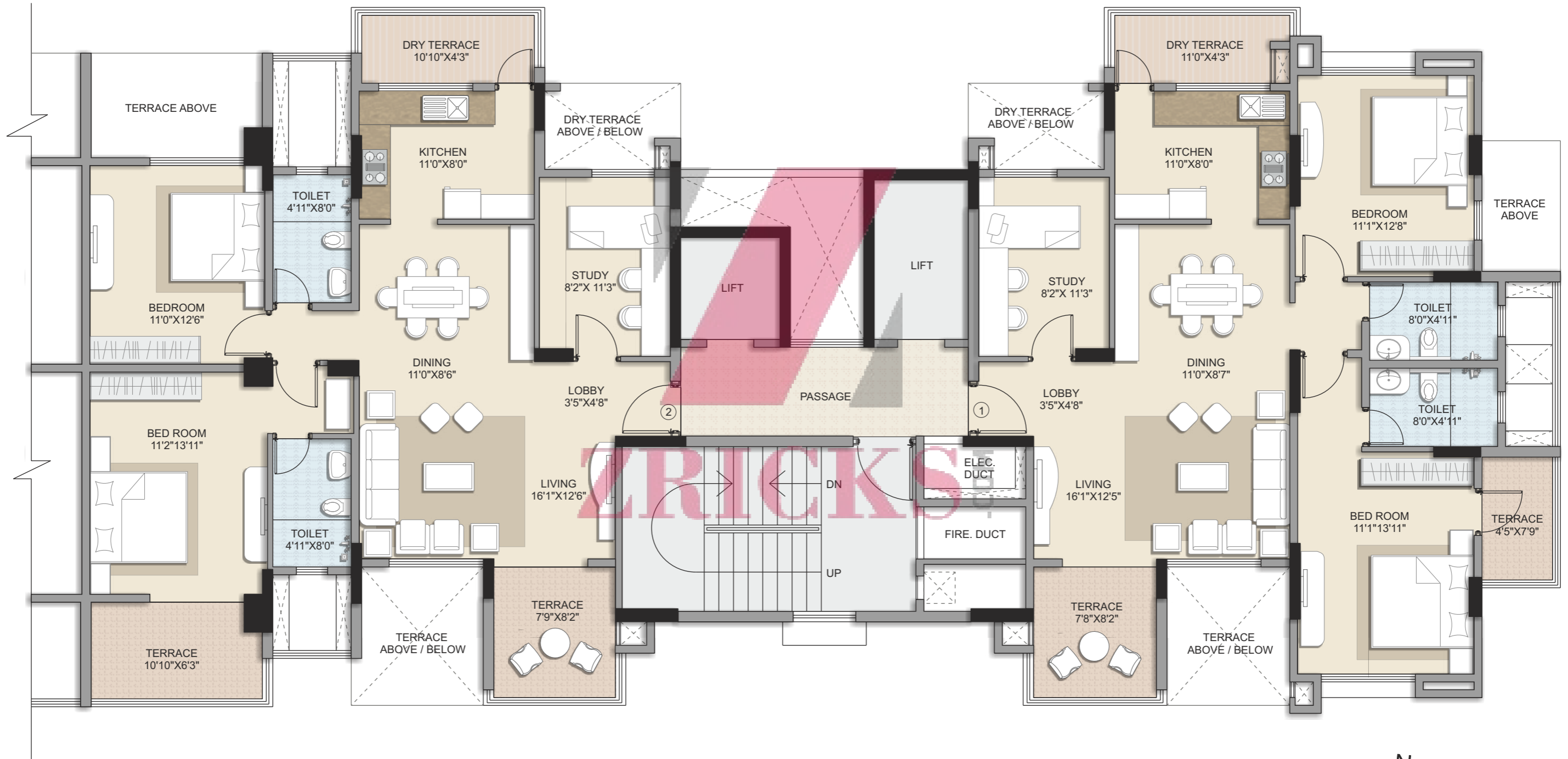
Wing H - 8th Floor Plan



Wing I - Typical 3rd, 5th, 7th, & 9th Floor Plan



Wing I - Typical 4th, 6th, & 10th Floor Plan



Floor Plan Features



- Spacious floor lobby with ample natural light & ventilation
- Separate duct for electrical wirings, low voltage duct, fire duct & garbage chute
- 2 elevators including a service elevator with ARD (Automatic Rescue Device)
- The main door of each apartment has a fire-fighting capacity of 30 minutes
- Entrance vestibule to avoid direct entry into the living room
- Wide windows for ample natural light & ventilation in all the rooms
- Cross ventilation in living room & dining area
- Kitchen adjoins the dining area for easy access
- Apartments have been planned to ensure utmost privacy in the bedrooms
- Segregated dry & wet areas in bathrooms
- Branded chrome plated bathroom fixtures & electrical switches
- MCB installed for individual rooms and for the entire apartment to ensure dual layer electrical safety

Amenities

General Amenities

- Decorative entrance lobby
- High speed elevators
- Anti-termite treatment to the foundation
- Mailbox room
- Partial water heating by solar system
- Rain water harvesting system
- Sewage Treatment Plant (STP)

Apartment Features

- Attractive main door finished with laminate
- Main door with safety lock, night latch, tower bolt, magic eye for entrance door & synchronised lighting
- Internal flush door with laminate finish
- Acrylic paint on internal walls
- Internal walls finished in POP
- Vitrified tiles in living room and bedrooms
- Anti-skid ceramic tiled flooring in terrace
- French windows in the living area
- Powder coated aluminium sliding windows with mosquito net & M.S. grill
- Separate space for washing machine
- Provision for telephone & cable T.V. points in living room & bedroom
- Provision for internet point
- Provision for AC
- Adequate electrical points

Kitchen Features

- Modular kitchen with hob & chimney

- Granite platform with stainless steel sink & drainboard
- Additional service platform
- Tiled dado above the platform
- Exhaust fan
- Provision for water purifier

Bathroom Features

- Anti-skid tiled flooring
- Designer dado tiles upto door height
- Superior quality sanitary fixtures and CP fittings
- 25 litre storage water heater in master bathroom
- Exhaust fan

Safety Features

- Earthquake resistant structure
- Generator back-up for an elevator and designated common areas
- Fire-fighting system
- Video door phone with intrusion alarm system
- Heat detector and smoke detector in the kitchen
- Concealed copper wiring with modular switches
- MCBs & ELCBs

Leisure Features

- Clubhouse with gymnasium, steam room & indoor games room
- Swimming pool & toddlers' pool
- Party hall
- Landscaped gardens & children's play area

Other Residential Projects



Kalpataru Aura - Goregaon (W), Mumbai



Project Imperial - Bhandup (W), Mumbai



Kalpataru Hills - Thane (W), Mumbai



Siddhachal Elite - Thane (W), Mumbai



Kalpataru Pinnacle - Goregaon (W), Mumbai



Kalpataru Radiance - Goregaon (W), Mumbai



Srishti - Mira Road (E), Thane
A joint venture of Kalpataru, Dynamix & N. L. Dalmia Group



Kalpataru Riverside - Panvel, Navi Mumbai



Kalpataru Estate - Pimple Gurav, Pune



Kalpataru Harmony - Wakad, Pune
A Kalpataru - Waghere joint development



Kalpataru Serenity - Manjri, Pune



Developers: Kalpataru Properties Private Limited

Site Address: Kalpataru Splendour, S. No. 192/2 and 192/4, Near Dutta Mandir, Wakad, Taluka Mulshi, Pune - 411 057. Tel.: +91 99232 05850

Pune Office: Kalpataru Gardens, 9A, Boat Club Road, Opposite Narangi Baug, Next to HDFC Bank, Pune – 411 001, India. Tel.: +91 20 2616 2516. Fax: +91 20 3041 3049. E-mail: sales.pune@kalpataru.com

Head Office: 101, Kalpataru Synergy, Opp. Grand Hyatt, Santacruz (E), Mumbai - 400 055. Tel.: +91 22 3064 3065. Fax: +91 22 3064 3131. Email: sales@kalpataru.com | Website: www.kalpataru.com

Disclaimer: The amenities are indicative, based on the construction of the building as is proposed at present and it is issued in good faith, subject to the approval of the authorities or in the interest of the continuing improvement and development of the Project, the Developers & Promoters reserve the right to alter the layout, plans, specifications or features without prior notice or obligation. The details contained are only indicative and artistic imagination, may not be exact or accurate, and the same does not form either the basis or part of the offer or contract. Guidelines are enforced for not allowing grills, flower pots etc. to be fixed outside windows or any changes to be made in external elevations. This property is secured with Allahabad Bank. The No objection Certificate / Permission would be provided, if required.