



www.Zricks.com



www.Zricks.com

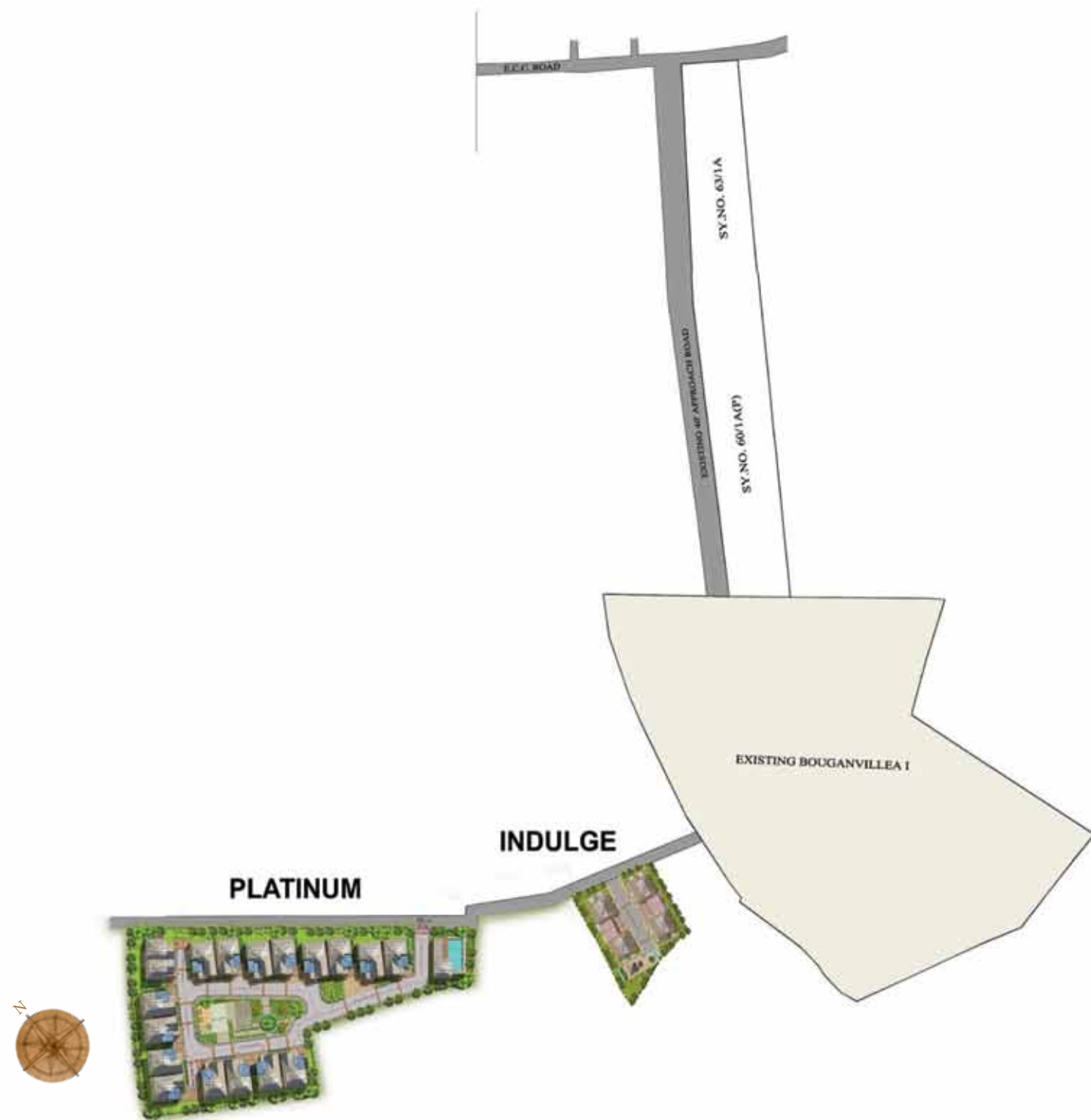
In a time where we see more concrete than greenery, Prestige Bougainvillea - II stands as a reflection of Bangalore's old world charm infused effortlessly with a new age touch.

Nestled in about 3.5 acres in the heart of Whitefield, Bougainvillea – II has 22 spacious, high end bungalows. Each villa is designed to present a larger than life and one of a kind dwelling.

The Hurley Club, spread across four floors, provides activities for people of all ages. With an entire floor is dedicated to health and fitness, it is just the place for avid fitness buffs. For those that seek entertainment, a floor fully equipped with a theatre and rooms for billiards and cards. The roof top swimming pool is the highlight and promises to be relaxing and rejuvenating.

Positioned just behind ITPL, Prestige Shantiniketan's commercial precinct and several other IT campuses, thus making commute convenient, the development is also very well connected socially with the presence of Forum Value Mall, Phoenix Mall and many other malls in the vicinity. The property is also conveniently located near several international schools (like Inventure Academy, Deens Academy) and reputed hospitals (Narayana Hrudayalaya, Columbia Asia). Moreover, the Government has started intensive work on the Metro rail connecting Whitefield to the city centre, with a station being planned close to ITPL, thus making Prestige Bougainvillea ideal location to reside in.

Read on to know more Prestige Bougainvillea - II where old world charm meets new age modernity.



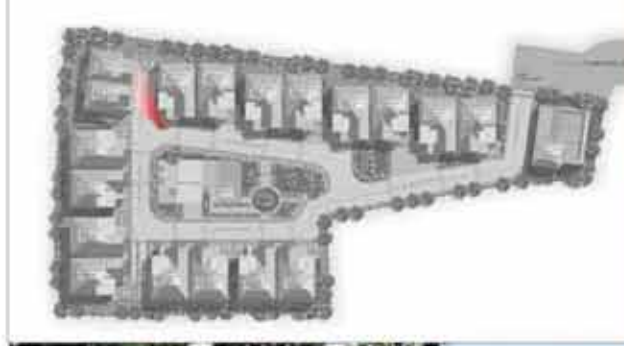
UNIT TYPE	SUPER BUILT UP (SQ.FT)	NO. OF UNITS
(Pink)	5925.00	16
(Blue)	4390.00	2
TOTAL UNITS		18







Villa Type A - Second Floor Plan
Unit Area: 5925 SFT

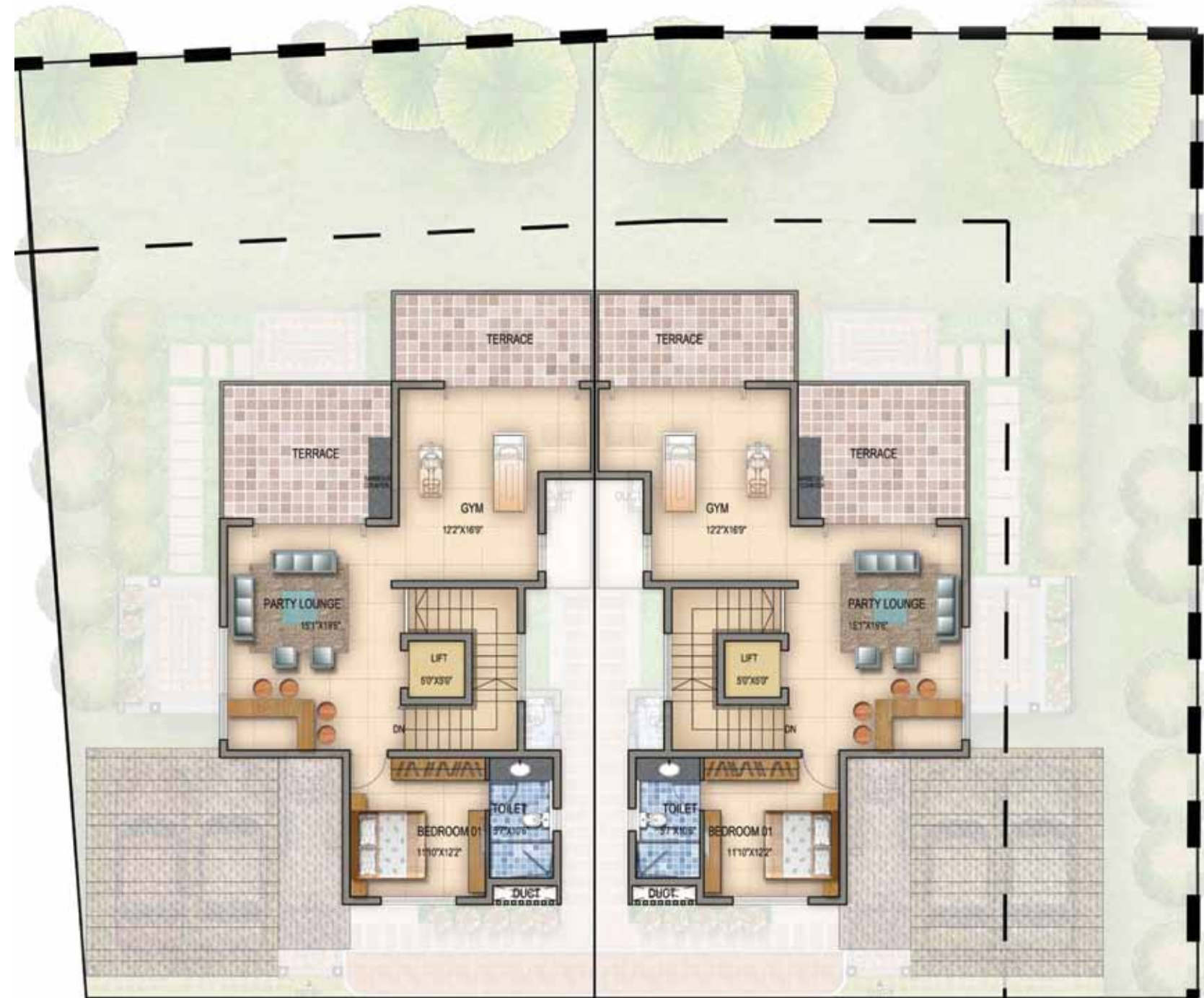


Villa View - Type B
Artist's Impression





Villa Type B - Second Floor Plan
Unit Area: 4390 SFT



www.Zricks.com

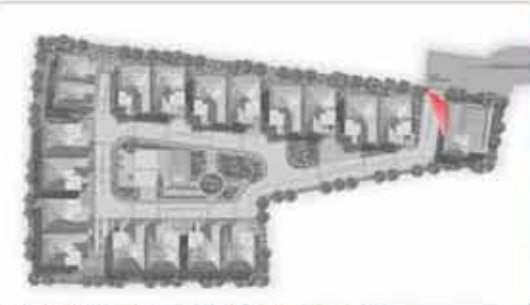


Villa View - Type A & B
Artist's Impression





ZRICKS .COM



*Club House
Artist's Impression*



PRESTIGE
BOUGAINVILLEA
INDULGE
ELEGANCE THROUGH SIMPLICITY

UNIT TYPE	SUPER BUILT UP (SQ.FT)	NO. OF UNITS
	5685.00	4



Villa Type C - Ground Floor Plan
Unit Area - 5685 SFT



ZRICKS

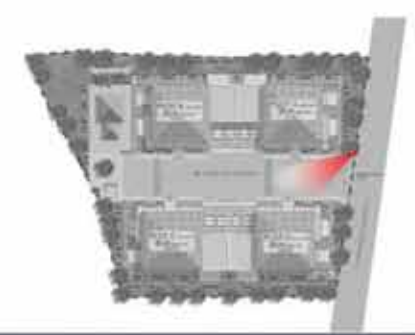
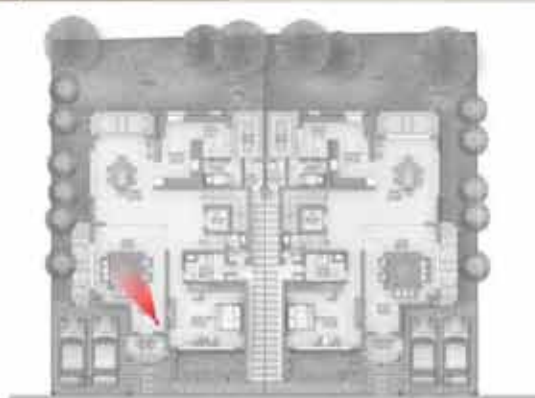
First Floor Plan - Villa Type C
Unit Area - 5685 SFT



Family Lounge
Artist's Impression



Living & Dining
Artist's Impression



Villa View - Type C
Artist's Impression



Location Map



Pouch



Prestige Estates Projects Limited

'The Falcon House', No.1, Main Guard Cross Road, Bengaluru - 560 001.

Ph: +91-80-25591080. Fax: +91-80-25591945. E-mail: properties@vsnl.com

Unit G8, Gera's Imperium II, Patto Plaza, Panjim, Goa - 403001.

Ph: +91 77099 00030, +91 83 2297 0333. E-mail: kezya@prestigeconstructions.com

www.prestigeconstructions.com



CREDAI

Bengaluru • Chennai • Goa • Hyderabad • Kochi • Mangaluru • Mysuru

Like us on Facebook • Follow Us on Twitter • Make sure you visit The Falcon Blog, for the latest at Prestige

This booklet is conceptual and not a legal offering. The promoter reserves the right to change, alter, add, or delete any of the specifications mentioned herein without prior permission or notice.