

PACIFICA  
CORPORATION





WELCOME TO  
PACIFICA ALURIM VILLAS

IT'S NOT ONLY ABOUT INDULGING IN A TRULY  
**GLOBAL LIFESTYLE**

It's not just a strict adherence to the time-honoured principles of vastu.  
**IT'S ABOUT LIVING LIFE AT ITS BEST.**

# AURUM VILLAS

CIVILIENCE AMIDST A VIBRANTLY SERENE HORIZON

Pacific Aurore Presents "Aurum Villas", India's first International Standard Township Project. Standing together in perfect mix of grandeur and comfort, serenity and connectivity, Aurum Villas are testimony of the design excellence and come with thoughtful amenities...all to ensure your happiness around.

VAASTU INSPIRED LIVING | ENVIRONMENTAL LANDSCAPED SPACES | GLOBAL LIFESTYLE CHOICES



YOU ARE NOW ENTERING A LIFE  
THAT IS FAR FROM ORDINARY



ZRICKS



50 BRD-PTD VIEW OF PACIFIC HIGHLANDS LAZ  
Assessing demand to comfort and mobility



WELCOME TO THE  
LAP OF LUXURY

AT THE HEART OF  
A TRULY PRIVILEGED EXISTENCE

ZRICKS

As you step into the green of The ZRICKS Academy, you are immersed in a beautiful environment. You are in a place you can't shake off the feeling that you've just left the mundane behind. It does not feel like any other gated community parkland.

The strategic blend of every other state-of-the-art facilities together, human ingenuity, and natural splendour to create a parkland of a lifetime. Where everything that you desire exists in one place.

As you take the first few steps in your dream life, you can't help but smile. It adds an indescribable joy to the knowledge that your children have all the opportunities.



ZRICKS





# NATURE'S BOUNTY

Tenquility accompanies your every step, only interrupted  
by the occasional melody of a bird, or the chirp of a delighted child.



As you peek out of your luxury villa, you'll never weary gazing a wonderful picture: rolling hills, hot air balloons, panoramic sea vistas, night with beautifully landscaped gardens and exquisite horticultural displays. Children will always have a new green kingdom to conquer. You'll always have a new walking track open from the day's arrival.

ZRICK



# SPIRITUAL RICHNESS

Walk into your Acorn III, and you'll be welcomed by a burst of positive energy and uplifting vibes – the hallmark of a fully vastu-inspired home.



Quality by design. That's what you can look forward to when you come home every day. Every corner of your Acorn III adheres to the time-honored principles of Vastu Shastra. Hence, you are in an environment that provides health, harmony and inner strength all day long.



## ZRICKS



# SPORTING PROWESS

Unleash, enjoy and excel at Pacific Avenir's extensive arena  
dedicated to all kinds of sports. Prepare for action-packed living.



ZRICKS

You can now choose from a mix of the sun-soaked courts, grounds and pitches that make up our Sports Zone. Basketball, tennis, fishing and cricket, among others, offer plenty of opportunities for your family to play and though outdoor sports provide entertainment, there's even something green that you can lean on all day long.

It is the essence of global living in the very center of Pacific Ocean. 100.000 square open feature, four open, four dining in your all-encompassing, simply in the grandest complex, suitable for sports, fitness, recreation and relaxation, immersed in tropical sea and sunbathing.



It's that personal touch that's fun and happy on the beach at ZRICKS. It is the embodiment of the life's success, embracing living, embracing water and sun.

# CLUB LIFE



60-6000 SQ FT OF FLOOR AREA AND 6-8 BED ROOMS (MAX)  
Everything you would expect in a truly International Lifestyle City



ZBRICKS

LIFESTYLE FEATURES



TENNIS COURTS



RETAIL OUTLETS



CHILDREN PLAY AREA



CRICKET GROUND



BASKETBALL COURTS

CLUB HOUSE HIGHLIGHTS



SPA/SAUNA



BOWLING



BILIARDS



LIBRARY



TABLE TENNIS



MINI-THEATRE



RESTAURANT



FITNESS CENTRE



DISCOTEQUE



GUEST ROOMS



BALLROOM



YOGA ROOM



GYMNASIUM



SWIMMING POOL



# FEATURE-FILLED INDULGENCE

With its innumerable features dedicated to modern lifestyle,  
Pacific Atrium makes every day of your life exciting and fulfilling.



AN INTERNATIONAL SCHOOL  
WITHIN THE PREMISES  
TO PROVIDE QUALITY EDUCATION



Exterior view Global Education Facility

A MULTI-SPECIALTY HOSPITAL  
TO SAFEGUARD AGAINST  
MEDICAL ISSUES AND EMERGENCIES



Exterior view of the Healthcare Facility



## PRICELESS DECISION

As you survey the state of Pacific Aesthetics, after taking in the sight and sound filled with quality and stress, and having surpassed the privileged lifestyle afforded to you by your surroundings, you are left with one irrefutable conclusion: Aesthetics Villa is one of the most distinguished estates you will have the pleasure of inhabiting your entire lifetime.

ZREKS



**ZRIQ**

# PLANNED PLEASURES

Our brief to the architects was simple: To engage you, from the moment you arrive past the gates of Pacific Avenues Lifestyle City to the time you step into your Avenues villa.

## THE ARCHITECTS RESPONSE

Our US based architects, But Hill, responded to the challenge by employing all their intellectual and technological might.



- To design a city that embraces wholeness, with plenty to offer to the mind, body and soul
- To engage you with the best of contemporary living, with plenty of options for relaxation and recreation
- To deliver you with quality sites by strictly following the spirit of sustainability
- To achieve all this without compromising on price and transparency. To have enough green, open spaces for you to reflect and recharge

### Single-minded approach to enhancing life:

- To deploy cutting edge technology like Geospatial Information Systems (GIS) that draw from extensive data to plan a community that offers comfort, but not at the cost of energy efficiency and economic sustainability
- To offer you a host of indulgences and amenities and place them at convenient distances from your residence
- To design wide access roads to the villas that end at roundabouts, thus preventing traffic jams and allowing the easiest access routes
- To create sufficient landscaped spaces, open areas and green patches that can become either playgrounds or areas of tranquility



STURZENEMBERG villas



STURZENEMBERG villas



ZRICKS.COM

Garage  
Küche  
Esszimmer  
Wohnzimmer  
Balkon  
Terrasse  
Stiege



Villa 01-W | 217 sq ft | Ground Floor Plan

Garage  
Küche  
Esszimmer  
Wohnzimmer  
Balkon  
Terrasse  
Stiege



Villa 02-W | 217 sq ft | Ground Floor Plan



SURFVA villas



SURFVA villas



ZRICKS.COM

Two bedrooms  
with a  
bathroom  
and  
a  
living  
area  
with  
a  
kitchen  
and  
a  
dining  
area



Villa C1-W | 202 sq ft | Ground Floor Plan



Two bedrooms  
with a  
bathroom  
and  
a  
living  
area  
with  
a  
kitchen  
and  
a  
dining  
area



Villa C1-W | 202 sq ft | First Floor Plan



STUPINA villas



STUPINA villas



ZRICKS

2000 sq ft  
3 bedrooms  
2 bathrooms  
open floor plan  
hardwood floors  
stainless steel appliances  
granite countertops  
walk-in closet  
finished basement  
2-car garage



Villa 01-0 | 2000 sq ft | Ground Floor Plan

2000 sq ft  
3 bedrooms  
2 bathrooms  
open floor plan  
hardwood floors  
stainless steel appliances  
granite countertops  
walk-in closet  
finished basement  
2-car garage



Villa 01-0 | 2000 sq ft | First Floor Plan



STARRIA villas



ZRICKS

Living Area  
Kitchen  
Bedroom  
Bathroom  
Terrace



Villa 01 - B | 3040 sq.ft. | Ground Floor Plan







Villa #14 | 3111 sq. ft. | GROUND FLOOR PLAN



Villa #14 | 3111 sq. ft. | FIRST FLOOR PLAN



Villa A2 W | 211 sq. ft. | GROUND FLOOR PLAN



Villa A2 W | 211 sq. ft. | FIRST FLOOR PLAN

ZRICKS.COM



Villa A24 | 3110 sq. ft. | GROUND FLOOR PLAN



Villa A24 | 3110 sq. ft. | FIRST FLOOR PLAN



Villa #1-B | 211 sq. ft. | GROUND FLOOR PLAN



Villa #1-B | 211 sq. ft. | FIRST FLOOR PLAN





Villa A8-B | 211 sq. ft. | GROUND-FLOOR PLAN

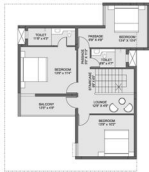


Villa A8-B | 211 sq. ft. | FIRST-FLOOR PLAN





Villa A18-B | 200 sq. ft. | GROUND FLOOR PLAN



Villa A18-B | 200 sq. ft. | FIRST FLOOR PLAN





Unit 404-B | 204 sq. ft. | GROUND FLOOR PLAN

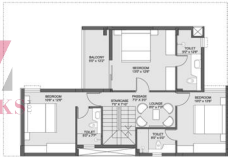


Unit 404-B | 204 sq. ft. | FIRST FLOOR PLAN





Villa 81 W | 211 sq. ft. | GROUND-FLOOR PLAN



Villa 81 W | 211 sq. ft. | FIRST FLOOR PLAN

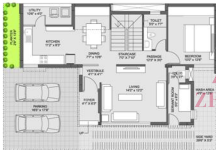




Villa 814 | 200 sq. ft. | GROUND FLOOR PLAN



Villa 814 | 200 sq. ft. | FIRST FLOOR PLAN

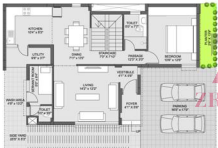


888 sq. ft. | 1000 sq. ft. | GROUND FLOOR PLAN



888 sq. ft. | 1000 sq. ft. | FIRST FLOOR PLAN

ZRICKS.COM

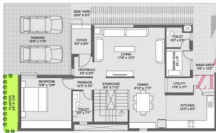


Unit 1001 | 2071 sq. ft. | GROUND FLOOR PLAN



Unit 1001 | 2071 sq. ft. | FIRST FLOOR PLAN

ZRICKS



Model #18-001 | 2744 sq. ft. | GROUND FLOOR PLAN



Model #18-001 | 2744 sq. ft. | FIRST FLOOR PLAN



Model 828 ■ | 2744 sq. ft. | GROUND FLOOR PLAN



Model 828 ■ | 2744 sq. ft. | FIRST FLOOR PLAN

ZRICKS.COM





Unit 21-2 | 2047 sq. ft. | GROUND FLOOR PLAN



Unit 21-2 | 2047 sq. ft. | FIRST FLOOR PLAN



Unit 204 | 200 sq. ft. | GROUND FLOOR PLAN



Unit 204 | 200 sq. ft. | FIRST FLOOR PLAN





3000 sq. ft. | 1247 sq. ft. | GROUND FLOOR PLAN



3000 sq. ft. | 1247 sq. ft. | FIRST FLOOR PLAN

ZRICKS .COM



Unit 201 - 1,053 sq. ft. | GROUND FLOOR PLAN



Unit 201 - 1,053 sq. ft. | FIRST FLOOR PLAN





Unit 8 - 8 | 1547 sq. ft. | GROUND FLOOR PLAN



Unit 8 - 8 | 1547 sq. ft. | FIRST FLOOR PLAN



Unit 2047 | 1047 sq. ft. | GROUND FLOOR PLAN



Unit 2047 | 1047 sq. ft. | FIRST FLOOR PLAN





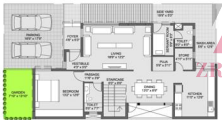
Unit 204 | 1603 sq. ft. | GROUND FLOOR PLAN



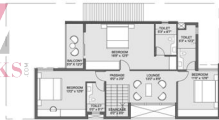
Unit 204 | 1603 sq. ft. | FIRST FLOOR PLAN

**ZRICKS** REALTY



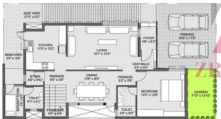


Model 126 ■ | 2671 sq. ft. | GROUND FLOOR PLAN



Model 126 ■ | 2671 sq. ft. | FIRST FLOOR PLAN

ZRICKS .COM



Unit 207 | 207 sq. ft. | GROUND FLOOR PLAN



Unit 207 | 207 sq. ft. | FIRST FLOOR PLAN



Unit 01-B | 2094 sq. ft. | GROUND FLOOR PLAN



Unit 01-B | 2094 sq. ft. | FIRST FLOOR PLAN

ZBRICKS.COM



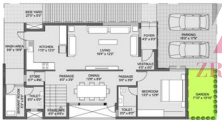


Model B1-E | 2100 sq. ft. | GROUND FLOOR PLAN



Model B1-E | 2100 sq. ft. | FIRST FLOOR PLAN

ZRICKS.COM



Unit 201 - 200 sq. ft. | GROUND FLOOR PLAN



Unit 201 - 200 sq. ft. | FIRST FLOOR PLAN



Unit 204 | 200 sq. ft. | SECOND FLOOR PLAN



Unit 204 | 201 sq. ft. | GROUND FLOOR PLAN

ZRICKS



Unit 2021 | 2021 sq. ft. | FIRST FLOOR PLAN



Unit 2021 | 2021 sq. ft. | SECOND FLOOR PLAN

ZRICKS

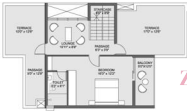


Unit 204 | 1140 sq. ft. | GROUND FLOOR PLAN



Unit 204 | 1140 sq. ft. | FIRST FLOOR PLAN

SPECIFICATION



ZRICKS.COM

Room	Item	Category	Qty	Comments
Off. Tables	Living - Entry Type	Floor	Table Marble	Premium Quality
	Meeting	Floor	Imported Marble - 600mm x 600mm	Imported
	Off. Reception	Floor	Imported Marble - 600mm x 600mm	Imported
	Main Reception	Floor	Engineered Stone - Marble	Flag or Equivalent
Tables	Meeting	Floor	Imported Marble - 600mm x 600mm	Imported
	Reception	Counters - Main Lobby		Premium Quality
Cn. Table	Reception	Floor	Marble - Granite - 600mm x 600mm	WTC or Equivalent
	Reception	Floor	Marble - Granite - 600mm x 600mm	WTC or Equivalent
	Reception	Floor	Marble - Granite - 600mm x 600mm	WTC or Equivalent
Main Table	Reception	Floor	Marble - Granite - 600mm x 600mm	WTC or Equivalent
	Reception	Floor	Marble - Granite - 600mm x 600mm	WTC or Equivalent
	Reception	Floor	Marble - Granite - 600mm x 600mm	WTC or Equivalent
Off. Table	Reception	Floor	Marble - Granite - 600mm x 600mm	WTC or Equivalent
	Reception	Floor	Marble - Granite - 600mm x 600mm	WTC or Equivalent
	Reception	Floor	Marble - Granite - 600mm x 600mm	WTC or Equivalent
Sanitary Ware & CP/Fittings	Configuration 01 - Washlet Toilet	Sanitary Ware CP/Fittings	Coverage 95% - Wall hung WC - floor drain	9045.01 or Equivalent 9045.02 or Equivalent
Sanitary Ware & CP/Fittings	Configuration 02 - Shower Toilet	Sanitary Ware CP/Fittings	Coverage 95% - Wall hung WC - floor drain	9045.01 or Equivalent 9045.02 or Equivalent
Sanitary Ware & CP/Fittings	Configuration 03 - Shower Toilet	Sanitary Ware CP/Fittings	Coverage 95% - Wall hung WC - floor drain	9045.01 or Equivalent 9045.02 or Equivalent

The quantities indicated are approximate for the CP and sanitary ware.



Sheet 02-4 | 11/01/2019 | SECOND FLOOR PLAN



ZREKS

LOCATION MAP



PACIFICA  
**ZRICKS**  
 .COM



2758 OFFICE  
 PACIFICA ARCHITECTURE, Pacific, 2000 West 24th Street, Suite 200, Chico, CA 95926

THE PACIFICA MARINA PROJECT IS A DEVELOPMENT OF THE PACIFICA MARINA AREA IN PACIFICA, CALIFORNIA. THE PROJECT IS A DEVELOPMENT OF THE PACIFICA MARINA AREA IN PACIFICA, CALIFORNIA. THE PROJECT IS A DEVELOPMENT OF THE PACIFICA MARINA AREA IN PACIFICA, CALIFORNIA.

CONTACT: PACIFICA ARCHITECTURE, 2000 WEST 24TH STREET, SUITE 200, CHICO, CA 95926

Project by Pacifica Companies | Master Planning, Architecture, Landscaping & Interior Design by Best, Hill

