

Lakhani Mega Structure LLP

Corp. Office : Satra Plaza, 18th Floor, Plot No. 20, Sector 19-D, Vashi, Navi Mumbai - 400 705
 Regd. Office : 408, Persipolis, Sector - 17, Vashi, Navi Mumbai - 400 705.
 Tel.: 6791 2424 • Fax : 6791 2425 • 93206 82589
 Email : info@lakhanibuilders.in • Website : www.lakhanibuilders.in
 Site : Plot No. 166 & 167, Sector-2, Ulwe, Navi Mumbai

Note / Disclaimer :
 All the plans, specifications, images, designs, facilities, dimensions etc. are only indicative and are subject to approval of the respective authorities. And the developers reserve the right to change any or all of these without prior notice or any obligation. This printed material does not constitute an offer and/or contract of any type between the developer and the recipient. Any purchase or lease of this development shall be governed by the terms and conditions of the agreement for sale/lease entered into between parties and no details mentioned in this printed material shall in any way govern such transactions. All images are for representation purpose only. Terms & Conditions apply.

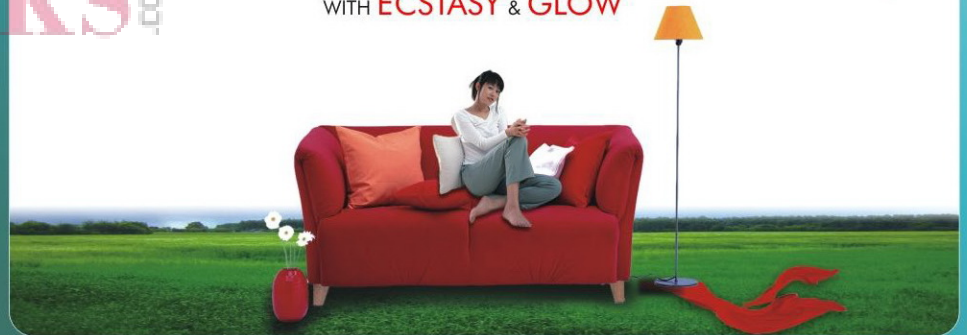
Even the location is conveniently connected to all conveniences such as

- Plot on 30 meter wide road and open space on back side
- Near to Express Way [Palm Beach - Nhava Sheva - Sewri Sea Link Road]
- Walking distance from Proposed Baman Dongri & Targhar Railway Station [Seawoods - Uran Railway Route]
- Located Opposite of Reliance NMSEZ.
- Near to Proposed International Airport.
- Finest Schools, Standard Banks and much more.



Lakhani's
EXOTICA
 Dignified lifestyle...

**HIGHLIGHTS YOUR LIFE
 WITH ECSTASY & GLOW**





Lakhani's
EXOTICA
 Dignified lifestyle...

HIGHLIGHTING YOUR DREAM
 HOME TO GIVE A UNIQUE LOOK

High on Comfort.
 High on Luxury.
 High on Space.
 High on Living.

Lakhani's Exotica is a wonderful venture by the group, where life will be on a greater heights with an extra focus on the 'Phenomenon of Living.'

It is one of the splendid residential complex in the heart of Navi Mumbai, Ulwe. This splendid residential-cum-commercial complex comprises of 2 Wings of 7 storeyed & a basement for ample car parking space, offers the sheer luxury of 1 & 2 BHK flats. Even all the elements of stylish living have been taken care in form of magnificent amenities with extraordinary facilities.

What's more, a 'Smart Home' offer you many more conveniences that will surprise you, delight you and leave you thoroughly impressed.



HIGHLIGHTING EVERY CORNER
WITH SOME EXTRA TOUCH



Lakshani's
EXOTICA
Dignified lifestyle...

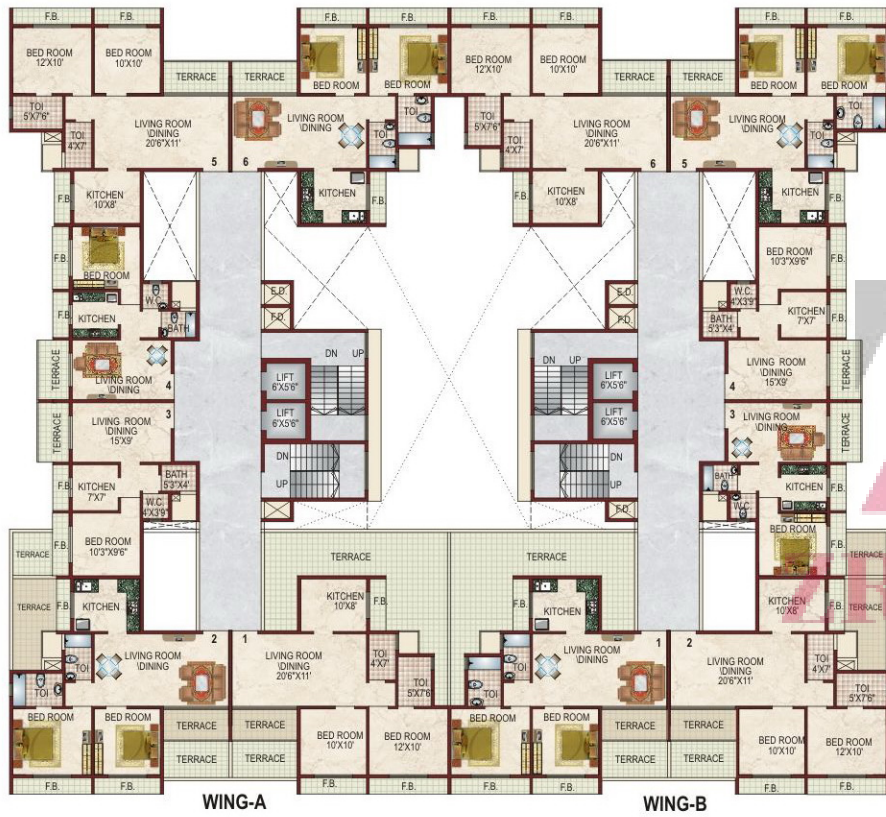
Living at its finest, living out of the world and living extraordinary. Here life gives you lots of blissful amenities that give a unique living experience. Wonderful homes, constructed to the highest standards incorporating the traditional and elegant lifestyles.

So get ready to enjoy the world's best living with all the best resources available.

- Landscaped Garden on ground level
- Spacious and attractive entrance lobby
- Well-equipped A/C gymnasium
- Party area with lawn
- Senior Citizen Area
- Children's play area with equipment
- Indoor games
- Ample Car Parking Space on basement & ground floor
- Retail Shops on ground floor



GROUND FLOOR PLAN



WING-A

WING-B



1ST FLOOR PLAN



WING-A

WING-B



2ND, 4TH, & 6TH FLOOR PLAN



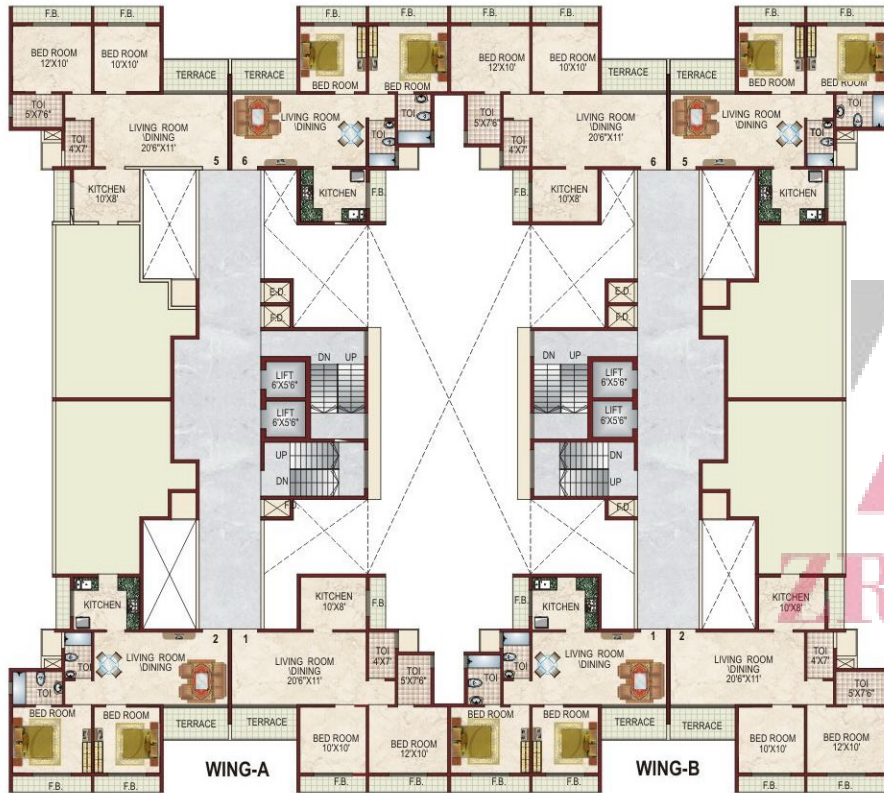
3RD & 5TH FLOOR PLAN

Labhani's
EXOTICA
Dignified lifestyle...

HIGHLIGHTING YOUR STATUS WITH AN ULTIMATE DESIGNS

- Attractive elevation.
- Structurally earthquake resistant R.C.C. structure.
- Decorative entrance lobby with combination of Italian marble and granite
- Anti-termites for the building.
- Backup generator for elevators and common areas.
- Reputed make Hi-speed automatic four lifts.
- Modern fire fighting system.
- Intercom security system.
- Vitrified flooring in all the rooms.
- Concealed wiring & provision for inverter.
- Laminated flush main door with elegant hardware fittings.
- Water proof FRP bath room doors.
- Aluminum powder coated sliding windows with tinted glass and mosquito net.
- Granite kitchen platform with service platform & S.S. sink.
- Designer Tiles up to Full height in bathrooms.
- C.P. fittings of reputed brand.
- Branded sanitary wares closets.
- All internal walls with gypsum finish.
- All internal walls painted with plastic / velvet paint.
- Textured finish external walls with acrylic paint.
- Decorative typical floor lobbies with textured wall finish.





7TH FLOOR PLAN

The brightest spot in ULWE



Lakhanis Oasis
It's your Life Style...

Site : Plot No. 20, Sector-9, Ulwe, Navi Mumbai

- Splendid elevation that represents G+7storey tower
- Aesthetically designed 1 BHK flats
- Spacious on ground floor
- Attractive elevation
- Fully equipped Gymnasium
- Indoor games
- Structurally earthquake resistant R.C.C. structure
- Spacious decorative entrance lobby



Lakhanis Blue Waves

Site : Plot No. 161, Sector-9, Ulwe, Navi Mumbai

- Splendid elevation that represents G+13 storey tower
- Aesthetically designed 1 & 2 BHK flats
- Shops on ground floor
- Club House & Landscaped Area
- Fully equipped state of art modern air conditioned gymnasium.
- Landscaped terrace garden on 7th floor.
- Indoor games on podium floor.
- Jacuzzi & Spa • Ample Car Parking



Lakhanis White Castle
A LIVING EXPERIENCE

Site : Plot no. 31, Sector-18, Ulwe, Navi Mumbai

- Splendid elevation that represents basement+G+13 storey tower
- Aesthetically designed 1 & 2 BHK flats
- Spacious and attractive entrance lobby
- Branded high-speed elevators
- Well-equipped A/C gymnasium • Meditation hall
- Party hall with lawn • Designer landscape garden • Jogging track
- Senior Citizen Area • Children's play area with equipment
- Indoor games • Ample Car Parking
- IGBC approved Green construction



Lakhanis AURA
A New Era Lifestyle

Site : Plot No. 8, Sector-5, Ulwe, Navi Mumbai

- Splendid elevation that represents G+9 storey tower
- Aesthetically designed Shops & 2 BHK flats
- Spacious and attractive entrance lobby
- Well-equipped A/C gymnasium
- Designer landscape garden
- Senior Citizen Area
- Children's play area with equipment
- Indoor games • Ample Car Parking