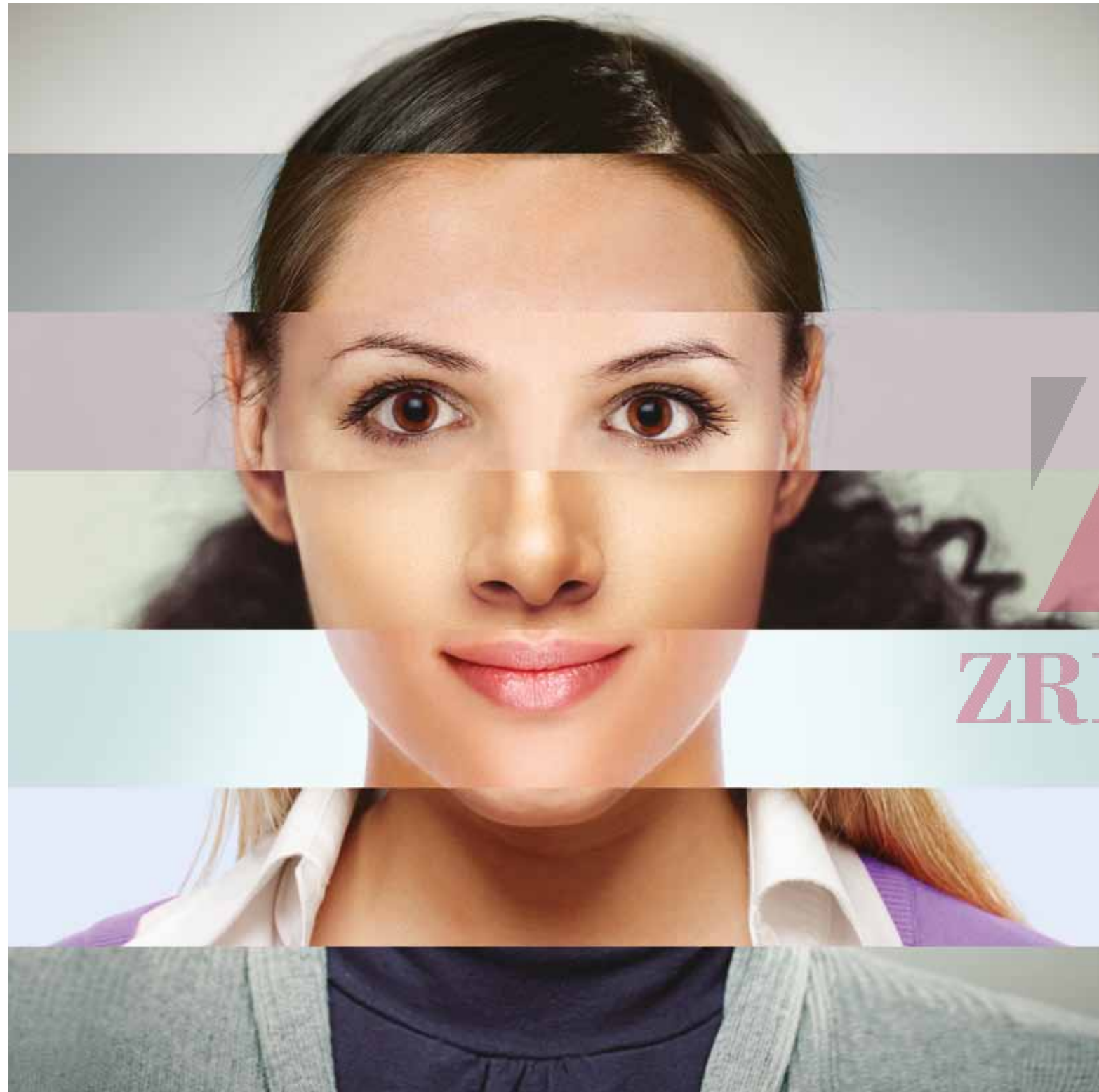


eonhomes





ZRICKS.COM

you are part of the new breed. constantly being shaped and re-shaped by the new-age work you do. continuously seeking new stimulus and a global-international way of living. you are the new Indian mind. which is a mind of the world.

eon homes is the kind of alive, world-class place that is great for your new indian mind. 12 amazing towers, with 2 and 3bhk fine homes, set on a verdant 22 acre campus. homes designed with a new thought process. not as a place of dwelling. but as a place of evolving.

eonhomes

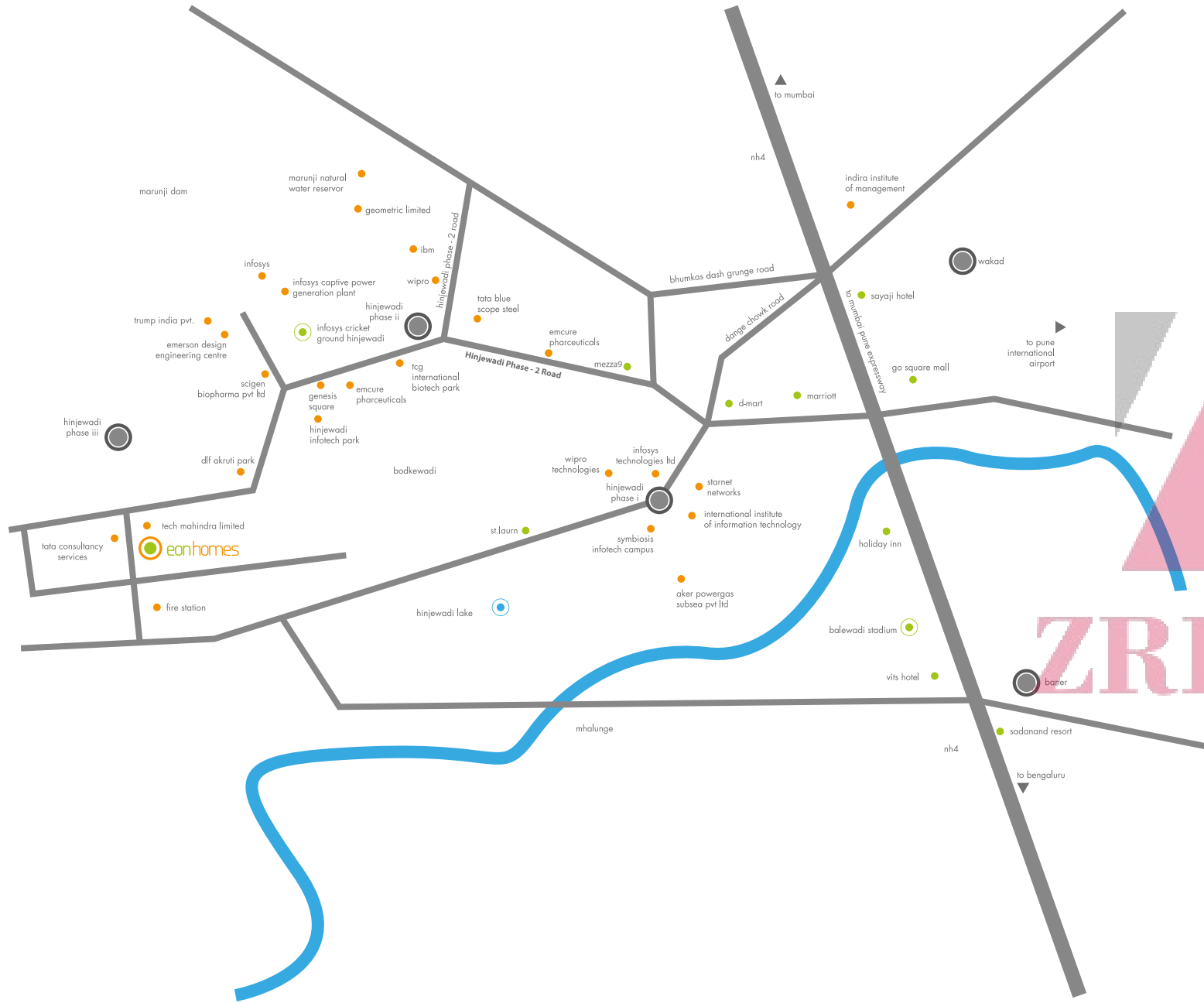
designed for the new indian mind

located in the country's most evolving zone

eon homes makes marvellous sense, especially if you are a professional working in this vast technological hub.

- located at hinjewadi phase III, pune
- india's most prolific i.t. zone
- large, ultra-modern western suburb of pune
- home-page to almost every leading i.t. player in indian industry
- can be easily reached from the mumbai-pune expressway





live

- 01 mercedes benz international school 6.4 km
- 02 symbiosis college 6.4 km
- 03 blue ridge school 6.9 km
- 04 dmart 7.3 km
- 05 go square mall 9.0 km
- 06 aditya birla hospital 12.4 km

play

- 07 st.laurn 5.1 km
- 08 marriott 7.8 km
- 09 mcdonalds 9.1 km
- 10 sayaji hotel 9.8 km
- 11 balewadi sports club 12.4 km
- 12 sadanand resort 12.7 km
- 13 vits hotel 12.8 km

work

- 14 tech mahindra limited 500 m
- 15 tata consultancy services 1.4 km
- 16 genesis square 3.1 km
- 17 infosys technologies 3.1 km
- 18 scigen biopharma pvt. ltd. 3.7 km
- 19 tcg international biotech park 3.7 km
- 20 wipro 4.8 km
- 21 ibm 5.8 km
- 22 infosys technologies 6.1 km
- 23 synechron technologies pvt. ltd. 6.0 km
- 24 geometric ltd. 6.4 km
- 25 starent networks (india) pvt. ltd. 6.5 km
- 26 cognizant technology solutions 6.5 km
- 27 kpit cummins infosystems ltd. 6.7 km
- 28 tps 360° 6.7 km
- 29 tata technologies 6.9 km
- 30 infotek software & systems (p) ltd / i-tek 6.9 km



a design that works for your home. and work.

the new-age mind also does not believe in being strait jacketed. and so eon homes has been carefully thought through. so that you enjoy working from home too.

living & dining:

- large sun-lit and airy • polished porcelain flooring • spacious terrace balcony

bedrooms:

- air-conditioning in bedrooms • full-height corner windows for light, ventilation and views
- designer furnished bathrooms with false ceilings
- branded sanitary fittings & accessories in the bathroom

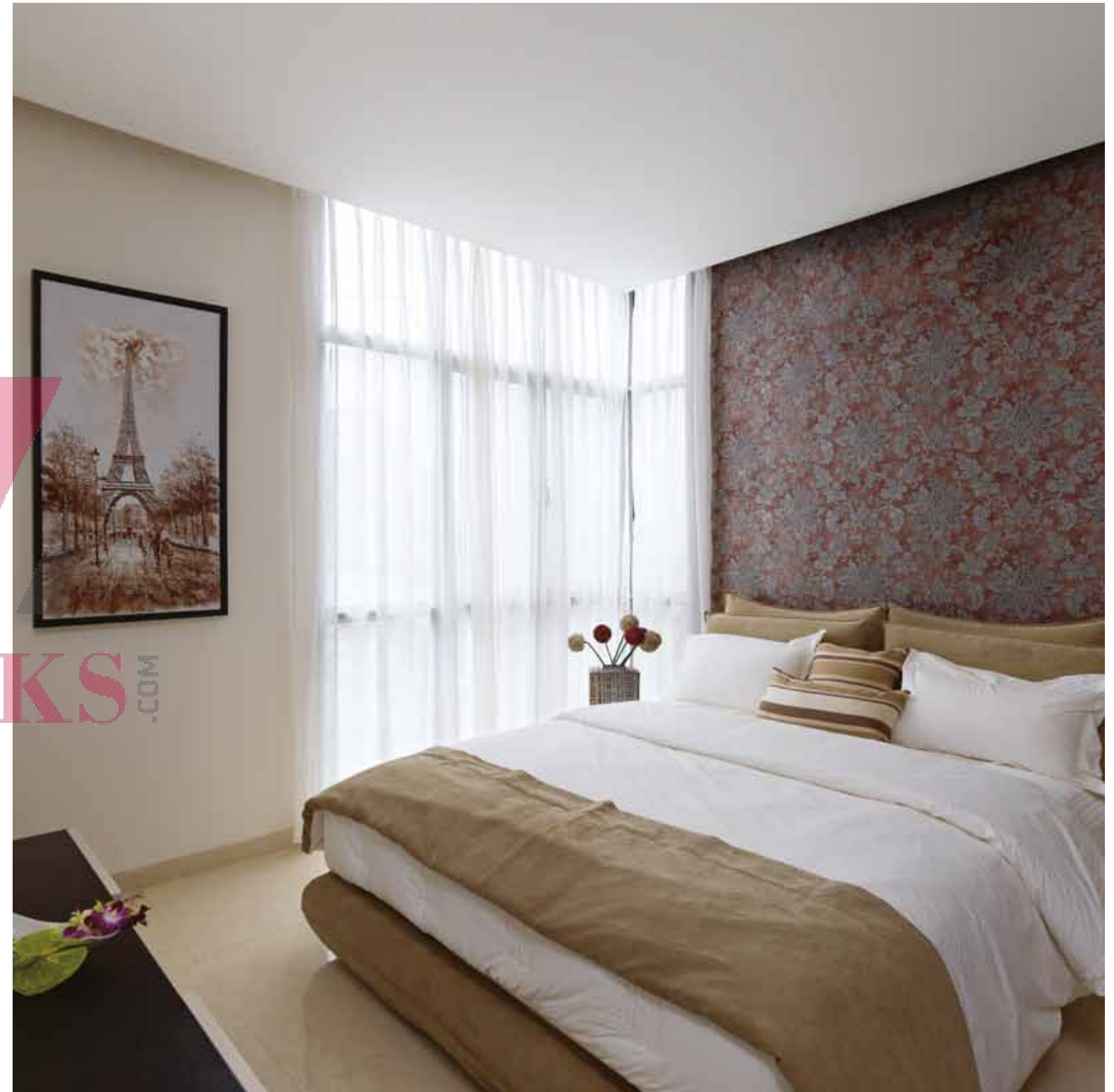
kitchen & utilities:

- modular kitchen with hob, chimney and water purifier • well-designed utility area with provision for washing machine/dishwasher and storage space





actual show apartment



actual show apartment

the new indian mind
needs to play as well as chill

ZRICKS



outdoor and indoor facilities

- tennis courts • basketball court • cricket pitches
- cycling track • squash courts • badminton court
- sports bar with snooker table • table tennis
- gymnasium • lap pool • kids pool



rejuvenation and
entertainment centres

- aerobics/meditation room
- steam • amphitheatre • mini theatre



1 sports arena

tennis courts
cricket nets
basketball / mini football courts

2 central garden

landscape features
walkways & beaches
amphitheatre
jogging
water features

3 the club

lap pool
children pool & playground
restaurant
sports bar (snooker, live sports)
gym & yoga
badminton
squash court

4 west gate

grand canopy
water fountain
landscape feature

5 car wash bay (west)

6 southern pavilion

gazebo seating with
landscape feature

7 car wash bay (south)

8 eastern pavilion

gazebo seating with
landscape feature

MASTER PLAN
eonhomes

abounding spaces.
as the indian mind tends to
wander further.

eon homes is beautifully set amidst 22 acres of lush, verdant greens.

ZRICKS.COM



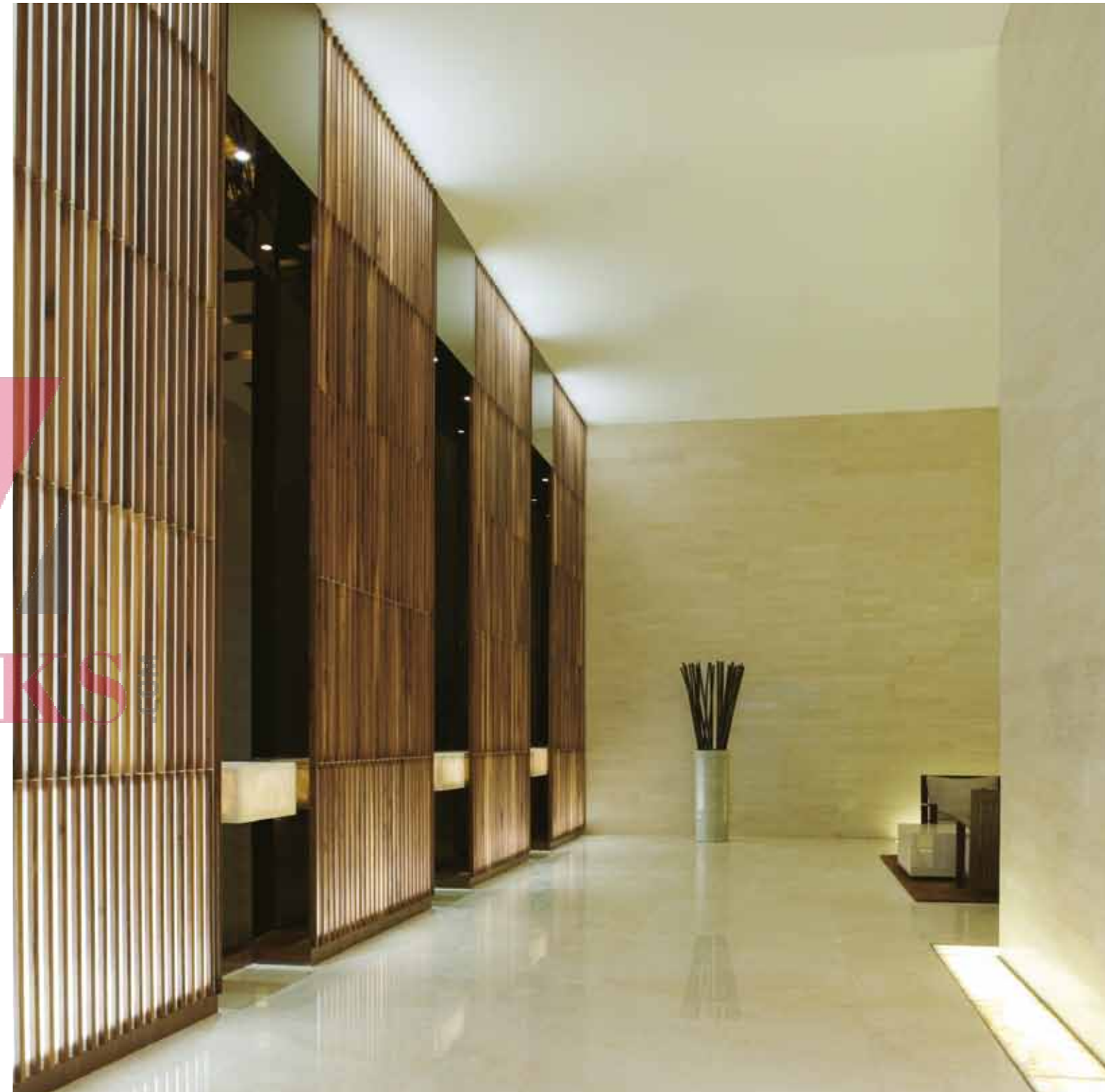


ZRICKS.COM

- large, open spaces with a minimum building footprint
- panoramic tree-lined avenues, generous walk-ways, gorgeous cycling trails
- free-flowing design and architecture
- in harmony with the pristine landscaping abounding all around
- international modernity that inculcates beauty and peace

world-class utilities.
world-class safety.

- 4 high-speed auto elevators including stretcher elevator in zones a & b and 3 high-speed elevators in zones c & d
- 100% power back-up in common areas and 1 kva for apartments
- drivers lounge and washroom
- sewage treatment plant
- rainwater harvesting
- ramps for the specially abled





ZRICKS.COM

- more than 2000 car parks below podium level
- 2 dedicated car wash bays (this is a first in the area)
- international safety standards
- multi-layered manual and electronic security
- video door phone facility
- video surveillance for the entire complex



- ① foyer (5' x 8') 40 sq ft
- ② dining (9' x 12') 108 sq ft
- ③ living (11' x 12') 132 sq ft
- ④ balcony (6' x 11') 66 sq ft
- ⑤ kitchen (8' x 10') 80 sq ft
- ⑥ utilities (6' x 9') 54 sq ft
- ⑦ master bedroom (12' x 12') 144 sq ft
- ⑧ master bath (5' x 8') 40 sq ft
- ⑨ bedroom 2 (9.5' x 10') 95 sq ft
- ⑩ common bath (6' x 7') 42 sq ft

2 bhk 914 sq. ft.* (81.91 sq. m.*)

*area mentioned above is approximate carpet area

ZRICKS



- ① foyer (6' x 8') 48 sq ft
- ② dining (9' x 12') 108 sq ft
- ③ living (12' x 12') 144 sq ft
- ④ balcony (6' x 10') 60 sq ft
- ⑤ kitchen (8' x 10') 80 sq ft
- ⑥ utilities (6' x 9') 54 sq ft
- ⑦ master bedroom (11' x 14') 154 sq ft
- ⑧ master bath (5' x 8') 40 sq ft
- ⑨ bedroom 2 (10' x 11') 110 sq ft
- ⑩ multi-purpose (10' x 10') 100 sq ft
- ⑪ common bath (6' x 7') 42 sq ft

3 bhk comfort 1085 sq. ft.* (100.80 sq. m.*)

*area mentioned above is approximate carpet area



- 1 foyer (5' x 7') 35 sq ft
- 2 dining (9' x 9.5') 85.5 sq ft
- 3 living (13' x 16') 208 sq ft
- 4 balcony (6' x 13') 78 sq ft
- 5 kitchen (8' x 12') 96 sq ft
- 6 utilities (6' x 8') 48 sq ft
- 7 master bedroom (11' x 14') 154 sq ft
- 8 master bath (5' x 8') 40 sq ft
- 9 bedroom 2 (11' x 12') 132 sq ft
- 10 common bath (5' x 8') 40 sq ft
- 11 bedroom 3 (11' x 11') 121 sq ft
- 12 bathroom (5' x 8') 40 sq ft

*area mentioned above is approximate carpet area

3 bhk luxury 1244 sq. ft.* (115.57 sq. m.*)

designed for the new indian mind.

ZRICKS



eonhomes
ZTRICKS.COM

site office

r- 3/1 near tech mahindra, phase 3, hinjewadi, pune - 411057.

call: 020-39553955

sales@eonhomes.com, www.eonhomes.com

project by:



kasturi



SIROYAEM