



EAST POINT

Home To The Rising Sun

www.Zricks.com



A well-planned infrastructure and demographic diversity has catapulted Bengaluru into one of the top economic and cultural hubs of the country. Listed among the top 10 preferred entrepreneurial locations in the world, the city is renowned as a prime centre for India's Information Technology sector.

And in the midst of it all, comes one of the finest residential developments in Eastern Bangalore. One that is built to suit the lifestyle of an IT professional and shall inspire you to chase your dreams as much as it shall mark the fulfillment of a long cherished one.

Spread your arms and embrace
your dreams. Rise and shine.

At East Point,
Home to the rising sun.

The home to the rising sun.
Now your home too.

Welcome.

East Point is a sprawling 7 acre community behind the Intel campus on Outer Ring Road, off the Marthahalli-Sarjapur stretch. The community comprises ten contemporary towers across three blocks. The three blocks form a triangular periphery to a scenic central landscape and open space that is the heart of the project.

The central courtyard ensures that vehicular movement is limited and the pedestrian walkways stemming from the central spine offer easy access to all landscape features. East Point introduces you to a luxurious contemporary lifestyle that can be experienced in all the homes built here – which include 2 Bed + Study homes, 3 Bed Luxurious homes, 3 Bed Duplexes and Penthouses.

Your office. Your child's school.
Your trips to the mall and the movies.
Next door takes on an all new
meaning at East Point.



Connectivity Highlights

Educational Institutions

Gear Innovative International School	100 Mts
New Horizon Gurukul	1.5 Kms
New Horizon Engineering College	1.7 Kms
Carmelaram High School	3.4 Kms
India International School	4.2 Kms

Malls & Multiplexes

Central Mall	3.1 Kms
Cinemax Multiplex, Bellandur	3.1 Kms
Total Mall	4.8 Kms
Innovative Multiplex, Marthahalli	3.8 Kms

Healthcare

Kirloskar Hospital	2.7 Kms
Apollo Clinic	2.9 Kms
VIMS Speciality Hospitals	4.6 Kms
Genesis Hospital	5.1 Kms
Yashoda Medicare and Research Center	6.9 Kms

Offices

Vrindavan TechVillage	1.0 Km
Cisco	1.2 Kms
Intel	1.5 Kms
Nokia / J.P. Morgan	2.7 Kms
Wipro	3.0 Kms

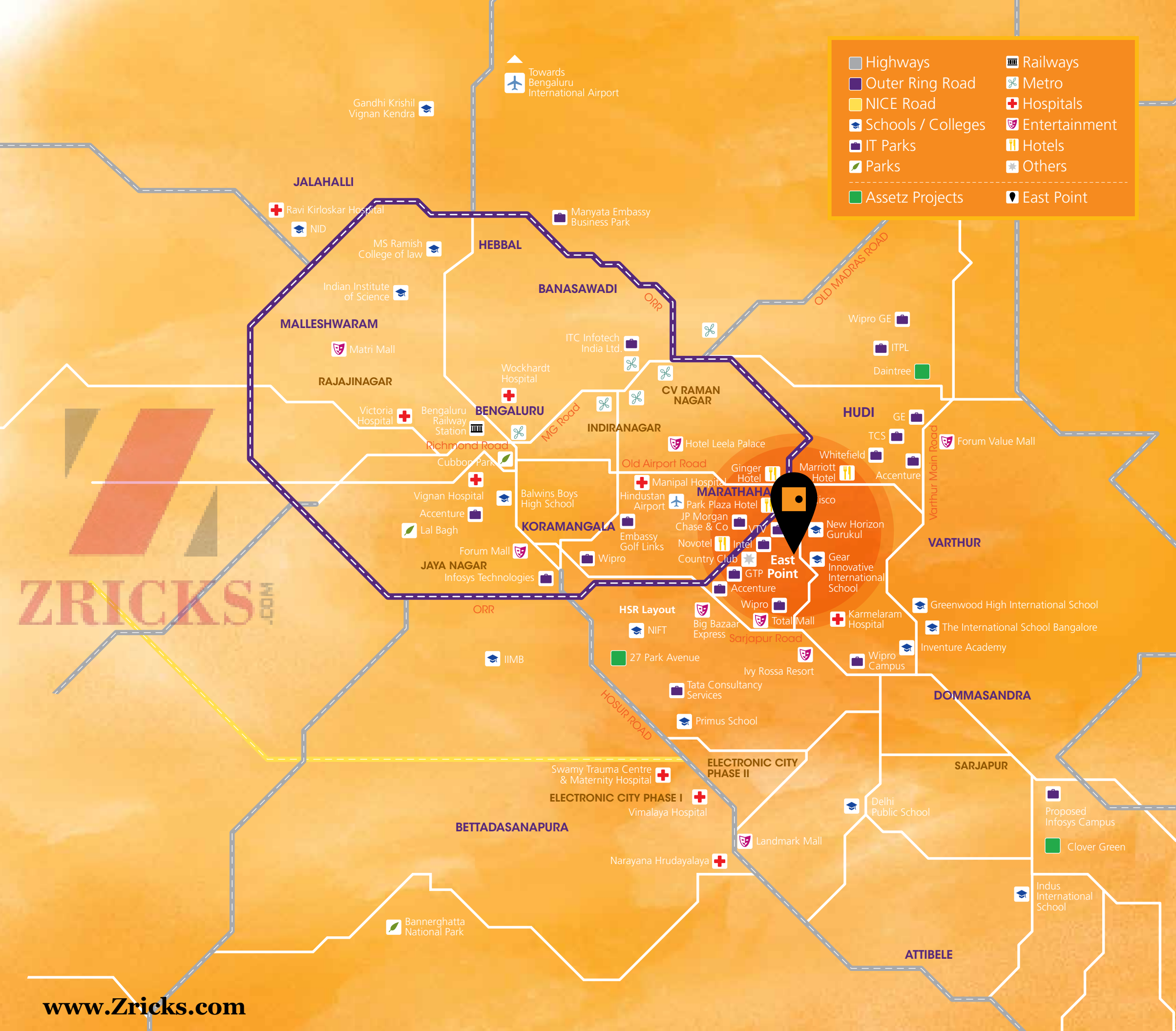
Hotels & Hospitality

Novotel - Accor Hotel	2.0 Kms
Marriott Hotel	2.0 Kms
The Country Club	2.4 Kms
Park Plaza Hotel	3.8 Kms
Ginger Hotel	4.0 Kms

ZRICKS.COM

www.Zricks.com

Highways	Railways
Outer Ring Road	Metro
NICE Road	Hospitals
Schools / Colleges	Entertainment
IT Parks	Hotels
Parks	Others
Assetz Projects	East Point



The East Point community.
Planned to perfection.

An 18.5 metre wide, two-way, four-lane road brings you to the serene East Point complex. East Point has separate entry and exit points from the approach road that leads you directly to the basement parking. There is an 8 metre wide fire tender path for movement around the three blocks.

The immaculate masterplan for this site guarantees an equable, green setting right at the heart of the community. Spaces have been designed taking into consideration the need of every individual who shall reside here – from toddlers to senior citizens.

- | | |
|-----------------------------------|------------------------------------|
| A Club East | B Horizon Pool |
| • Squash Court | C Kid's Pool |
| • Badminton Court | D Kid's Park |
| • Billiards, Snooker, Carrom Hall | E The Senior's Plaza |
| • Gymnasium | F Party Lawn |
| • Yoga Room | G Tennis Court |
| • Sauna | H Basketball Practice Court |
| • Mini Theatre | I Cricket Pitch |
| | J Jogging Track |





Return to a home that is
cozy as it is spacious.

That radiates warmth as it
spreads cool comfort.



EAST POINT

www.Zircks.com

Living & Dining Spaces

All homes at East Point come with a spacious living and dining area for you to unwind everyday and to play host to friends and family over the weekend.

- Balconies offering bird's-eye view of the IT corridor or the central landscape zone
- Large glazed sliding doors and windows
- Polished vitrified tiles with a smooth finish, to lend an enhanced feeling of space
- Easy access to living and dining spaces from the open kitchen
- Atrium with double height glazing in dining area with a connecting open private garden in duplexes
- Entrance foyer designed to ensure privacy of living and dining areas

A space that speaks
your language.

Bedroom Spaces

Bedrooms at East Point are configured to offer complete privacy and the space to accommodate wardrobes, paintings and more, so your private space can be truly personalized.

- Wooden flooring in the master bedroom
- Vitrified flooring in the kids room and guest room
- Attached balconies for 3 Bed homes and higher configurations
- TV and telephone points in the master bedroom

Your space that
just lets you be.

Kitchen & Utility Spaces

Kitchens at East Point have been designed keeping in mind the utilization of dry and wet spaces within the kitchen, with ample natural light and ventilation.

- Contemporarily designed open kitchen with access to dining area
- Well-laid platform with granite top; stainless steel sink with drain board
- Adequate points for electrical appliances
- Provision for washing machine and drying area for clothes
- Provision for water purifier and exhaust fan
- Piped gas connection for each kitchen from a centralized gas bank

A space that will bring out
the Master Chef in you.

Your Leisure Space

We understand how much you enjoy your space, and the leisure time spent with your loved ones. We offer you an exclusive area within your home, which will act not only as your corner of peace, but also as your den of socializing with peers, against glistening vistas during night and day.

ZRICKS

Socialize in style.

Play. Swim. Relax.

A world of recreation.

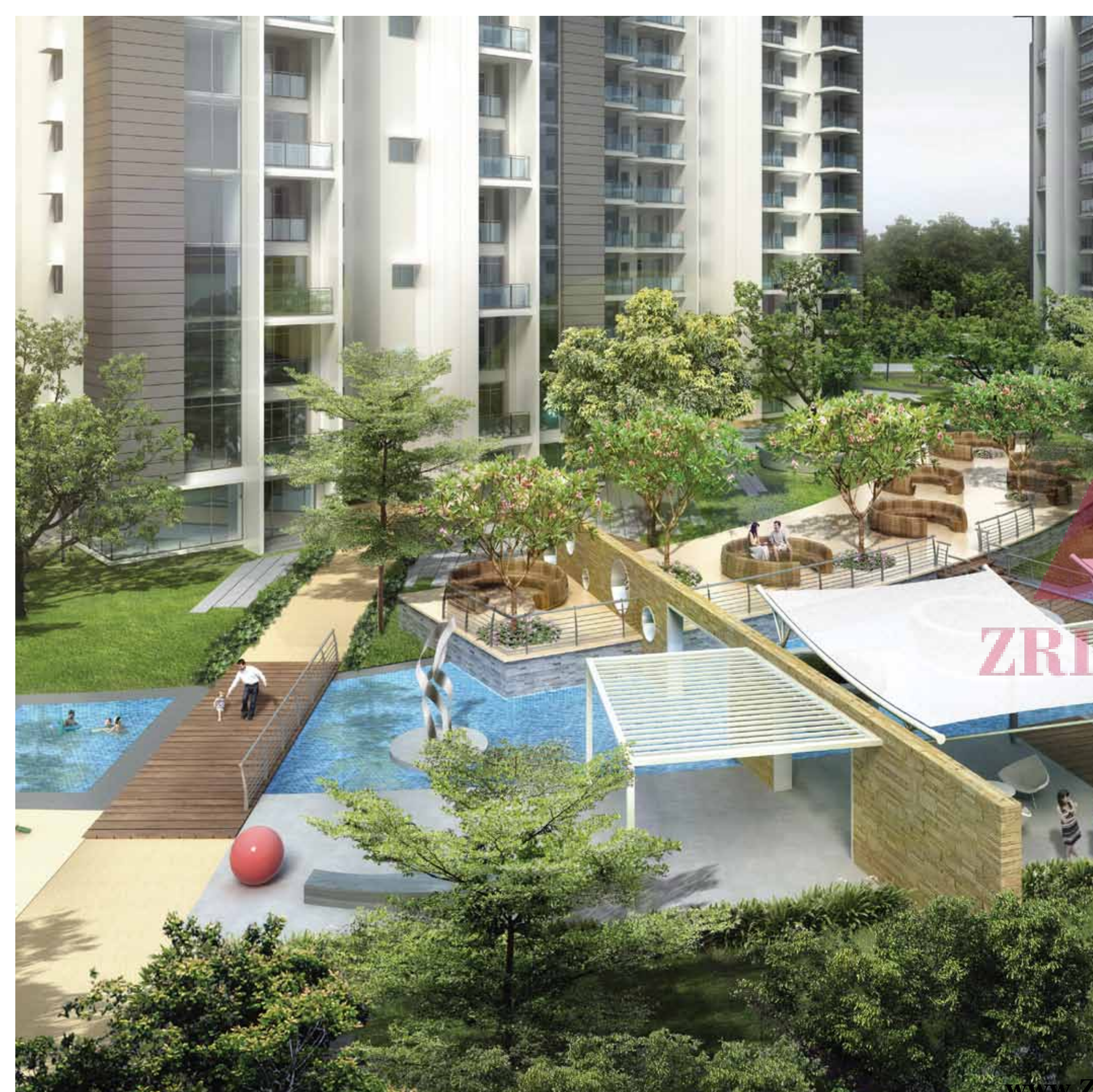
A world of fitness.

Your world, called East Point.



Swim towards infinity.
The Horizon Pool.





The East Point life.
Beyond your home.

The entire East Point community has been planned to let residents experience a healthy, luxurious and fulfilling lifestyle. The clubhouse, "Club East" is spread across multiple levels of Block C, reducing the concrete footprint within the community and leaving more space for greens and open areas. While the event hall, party lawns, reading room are on the ground level, the squash and badminton courts are on the ninth level with the crowning glory being the Horizon Pool on the rooftop.

Fitness & Sport

- Horizon Pool
- Jogging Track
- Cricket Pitch
- Tennis Court
- Squash Court
- Badminton Court
- Basketball Practice Court
- Billiards, Snooker, Carrom Hall
- Gymnasium
- Yoga Room
- Sauna

Recreation & Child Care

- Sky Garden in Tower A
- Crèche
- Reading Room
- Mini Theatre
- Multipurpose Open Terrace
- Event Hall
- Party Lawn
- Kids Pool & Play Area
- The Senior's Plaza

Convenience & Security

- 1 kVA back-up for every home
- Common areas with Diesel Generator back-up
- 2 Elevators in every tower
- Rainwater Harvesting
- Sewage Treatment Plant below basement level
- Basement Car Parking
- Garbage Chute
- Organic Waste Converter

ZRICKS



A home that lives up to your dreams,
your hopes, your ambitions.
Your home at East Point.



ZRICKS

www.Zricks.com



This brochure is purely conceptual and does not constitute a legal offering. Assetz Property & Homes LLP reserves the right to add, delete, alter or modify any part of the offering described herein. Added elements showcased, including but not limited to images, plans and illustrations, are only indicative and / or conceptual and may not be provided by the Developer.

www.Zricks.com

EAST POINT

ON-SITE SALES OFFICE:

East Point
Behind Intel Campus,
Bogannahalli Main Road,
Off Marathahalli - Sarjapur Outer Ring Road,
Bangalore, India.

CORPORATE MARKETING LOUNGE:

Assetz Property & Homes LLP
Second Floor, Embassy Icon Annexe,
Infantry Road,
Bangalore - 560 001.
India.

T : 080 6561 0999

E : enquiries@assetzhomes.com

W : <http://eastpoint.assetzhomes.com>

Financial Partner



www.Zricks.com