



PRESENTING THE
FINEST INVESTMENT
OPPORTUNITY
IN GURGAON



For Enquiries Call: 88009 95222 / 98114 20573 | www.supertechlimited.com | Basera site address: Sector 79, 79B, Gurgaon, Haryana.

PROJECT APPROVALS: Coloniser/Developer: Revital Reality Pvt. Ltd. Development arrangement with Supertech Ltd. Lic. No/Year: (i) 163 of 2014 dt. 12.09.2014; (ii) 164 of 2014 dated 12.09.2014. Combined Zoning Approval Dwg No. DGTCP-4971 dt. 03.11.2014. Approval of Building Plans by Memo Number ZP-1033/AD (RA)/2014/28487 Dated - 19/12/14. Located on New Golf Course Road, Sector-79 & 79B

*Conditions apply. All buildings, information, specification, etc. are tentative and subject to variation and modification by the company or the competent authorities sanctioning such plans. Images are for representative purpose only.
*1 sq. mtr. is equal to 10.76 sq. ft. & 1 sq. mtr. is equal to 1.196 sq. yd.

www.Zricks.com

AN OPPORTUNITY
TO OWN A SHOP IN
A MART AT THE MOST
WONDERFUL LOCATION

Introducing, "Supertech Mart" at Basera, an exclusive shopping arena dedicated for you. Located in the golfing hub of Gurgaon as part of a 200 acre mega township - Aadri, this development is sure to take your breath away.

PROJECT HIGHLIGHTS:

- Located at Sector 79, 79B, Gurgaon
- Retail spaces ranging from 346 sq.ft (32.14 sq.mt) to 8000 sq.ft. (743.22 sq.mt)
- Spanning across 3 floors

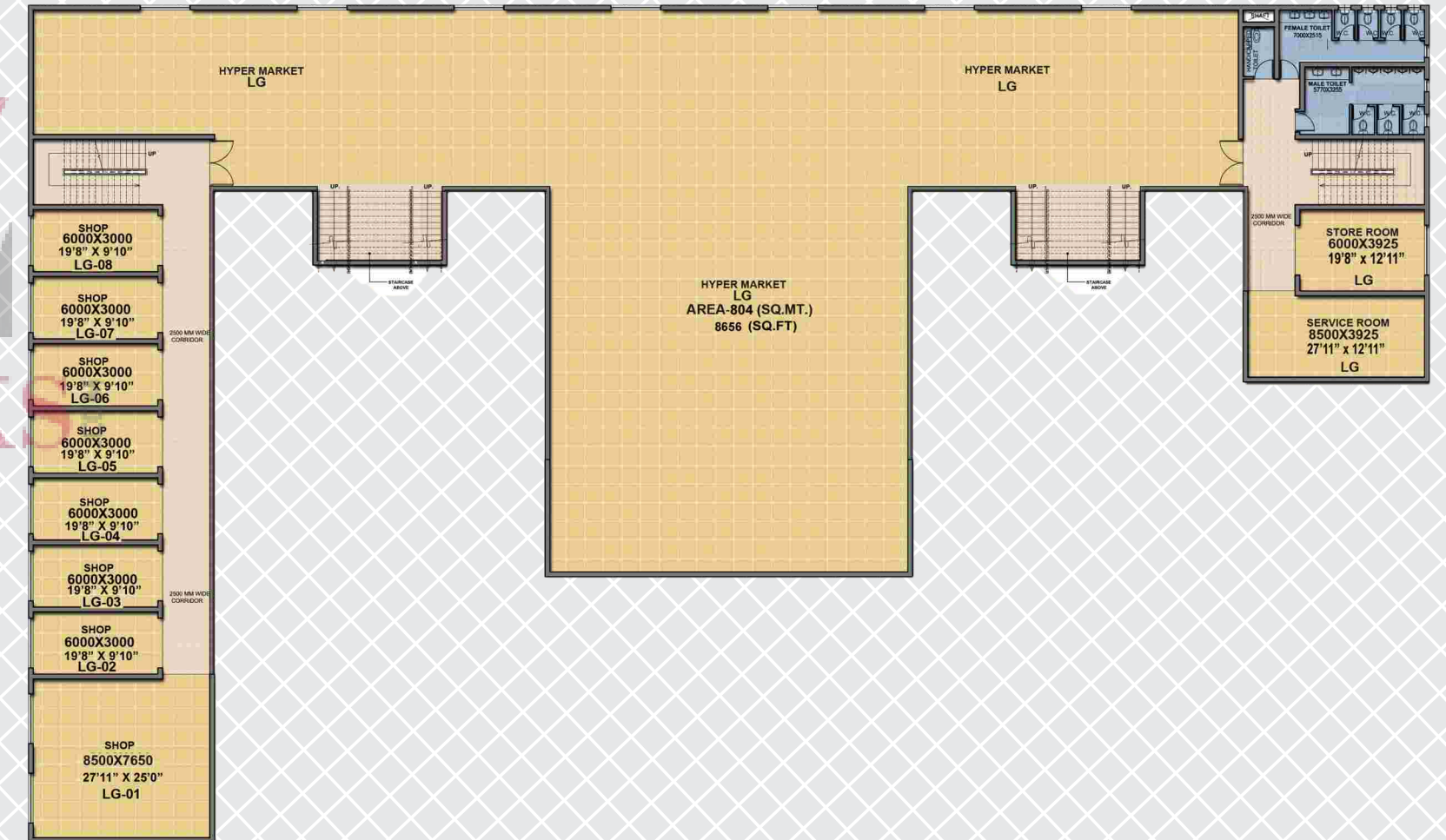




At Supertech Mart, a host of 80 units welcome you to the most lavish shopping experience. Here a gamut of options ranging from 346 sq.ft. (32.14 sq.mt) to the maximum 8000 sq.ft. (743.22 sq.mt) spread across 3 floors - Lower ground, Ground & First floors is sufficient for not only your daily needs but also much more.



LOWER GROUND FLOOR PLAN



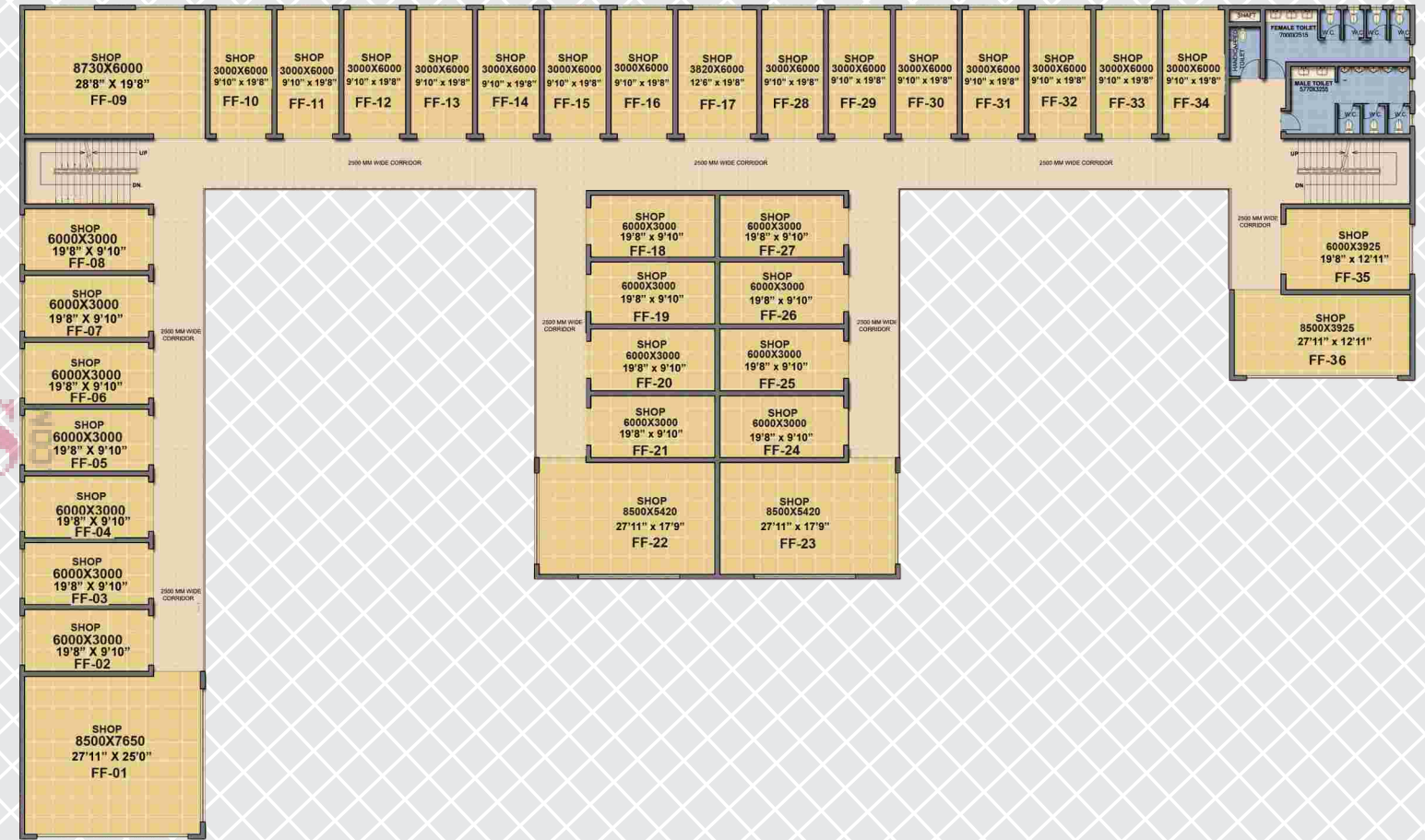
An artistic impression



UPPER GROUND FLOOR PLAN



FIRST FLOOR PLAN





LOSE YOURSELF TO AADRI,
THE 200 ACRE HILLSIDE CITY
CRAFTED WITH JUST LOW-RISE
STRUCTURES.

Nestled on a 24 meter wide road, Supertech mart
will not only dedicatedly cater to the 2000 families
at Basera but also to the entire township, making
it a blink-and-you-miss-opportunity for all.



LEGEND

	SMALLER PLOTS (134.25 SQMT- 288.36 SQMT)
	MEDIUM PLOTS (300 SQMT- 420.12 SQMT)
	LARGER PLOTS (425 SQMT- 860.66 SQMT)
	NPNL PLOTS (124.99 SQMT- 218.20 SQMT)
	EWS PLOTS (50 SQMT- 95.63 SQMT)
	UDL PLOTS
	ARAVILLE HOUSING
	FUTURE EXPANSION



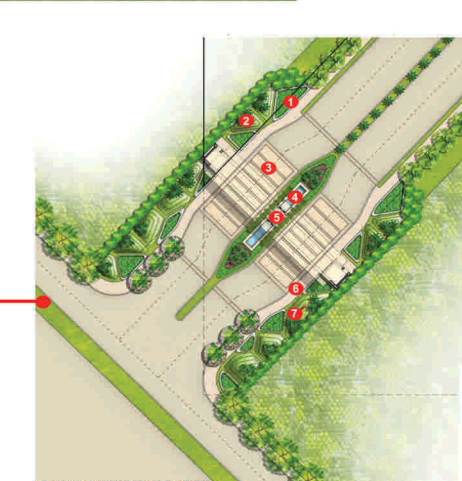
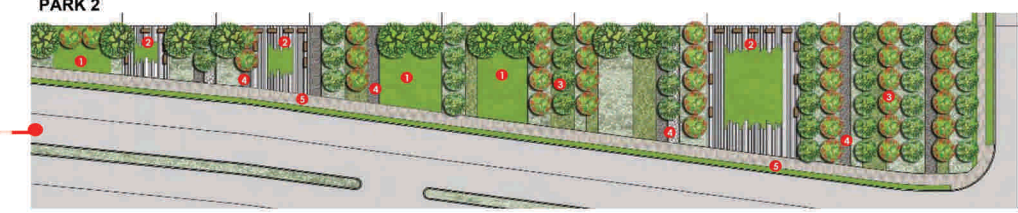
LEGEND:

- Entrance Plaza
- Grand Promenade
- Kids Play Area
- Amphitheatre cum Stepped Seating
- Congregational Lawn
- F & B Corner
- F & B Kiosks
- Aromatic Garden
- Seating Enclave
- Multi-purpose Lawn
- Jogging Track
- Cycle Track
- Mound
- Badminton Court
- Lawn
- Pergola



LEGEND:

- Entry / Exit
- Entry Plaza
- Active Play Area
- Adventure Play Area
- Recycled Tyres
- Tree House
- Sand-pit (to-tot)
- Kids Play Area (4-8yrs)
- Badminton Court
- Flower Garden
- Reflexology and Elderly seating area
- Main Lawn
- Fitness Alcoves
- Seating Enclave (aromatic garden)
- Yoga and Meditation Lawn
- Amphitheatre Services



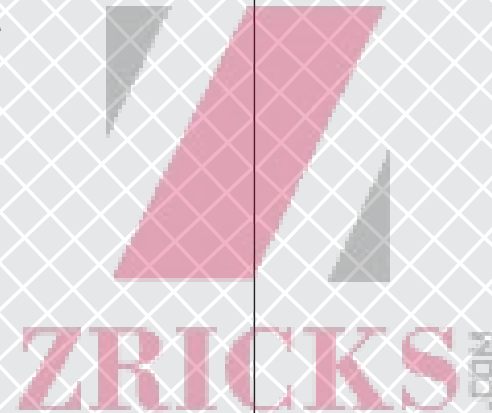
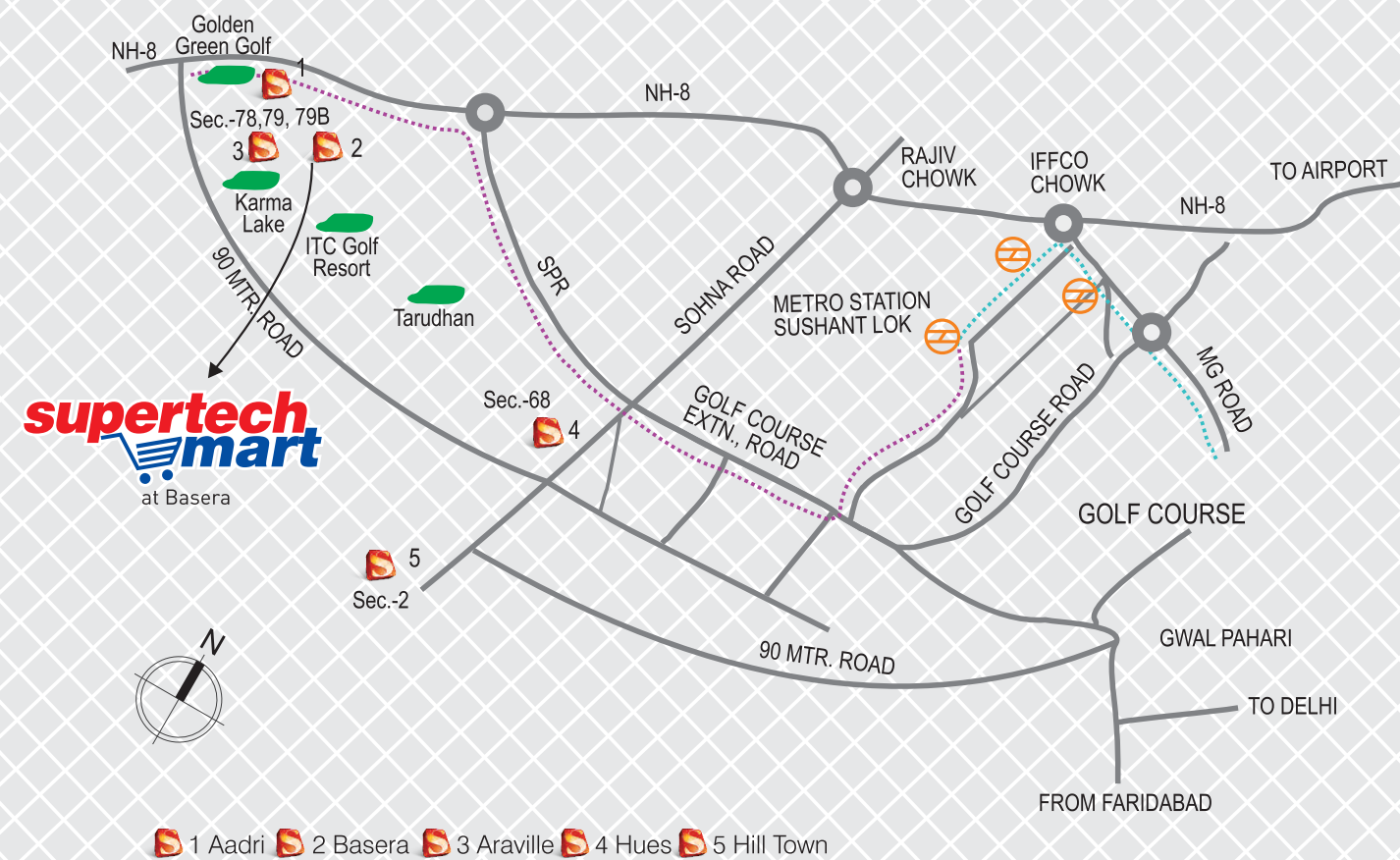
LEGEND:

- Vibrant Seasonal Planting
- Sculptural Mounds
- Entry paved court
- Water feature As / Arch.
- Gate structure As / Arch.
- Pathway
- Aadri signage





LOCATION MAP



People behind the project

Supertech Ltd. – one of India’s leading real estate developers came into inception close to 27 years ago. The company has been instrumental in redefining home buying for any customer around the country. With more than 60,000 satisfied customers & more than 30,000 residences delivered, the company is scaling new heights each day with more than 50 ongoing projects in different locations around the country.

With such scale and size comes an opportunity to redefine oneself each day. Global partners like Armani Casa, Yoo Studios - UK & ACC are but a few of the coveted names in the list that the company boasts of today. Like the pre-cast technology setup, the company is fast diversifying while also supporting various causes like Kaksha – an education initiative for the under-privileged.

Ongoing Developments:

- North Eye, Sector 74, Noida
- ORB, Sector 74, Noida
- Supernova, Sector 94, Noida
- E-Square, Sector 96, Noida
- The Romano, Sector 118, Noida
- Aadri, Sector 79, Gurgaon
- Araville, Sector 79, Gurgaon
- Hues, Sector 68, Gurgaon
- & many more

Landmarks Delivered:

- 34 Pavilion, Sector 34, Noida
- Capetown, Sector 74, Noida
- Eco Village I – Greater Noida (W)
- Eco Village II – Greater Noida (W)
- Ecociti, Sector 137, Noida Expressway
- Supertech Emerald Court, Sector 93-A, Noida Expressway & many more