



**SITE:** Amantra, Eco City, Kalyan – Bhiwandi junction, Mumbai Nashik Expressway

**CORPORATE OFFICE:** Times Tower, 12th Floor, Kamala Mills Compound, Senapati Bapat Marg, Lower Parel, Mumbai 400 013

For more information call 1800-3004-8282 or visit [www.tatahousing.in/amantra](http://www.tatahousing.in/amantra)

Conditions Apply\*

**Disclaimer:** This brochure is purely conceptual and not a legal offering. The developer reserves its right to add, delete or alter any details, specifications and/or features or plans without any notice or any obligations. Images are for representative purposes only. All the specifications, designs, facilities, dimensions, etc. are subject to the approvals of the respective authorities. The brochure is to be used as a guide only. The prospective buyer should rely on the plans, specifications and amenities referred in their final agreement/contract.

**www.Zricks.com**

If perfection can be improved, this is how.  
Beginning a colorful journey into its next phase,  
the most sought-after address let's you discover  
what hundreds of families already have.



Welcome to an address that has been crafted to perfection.

Amantra by Tata Housing.

A confluence of innovative architectural ideas to make the most of the landscape.

Soaring towers that rise above the surroundings, elements of nature forged to make life comfortable,  
the smallest of design detail and modern amenities that make life worth living.

A contemporary residential development designed for higher living.

**[www.Zricks.com](http://www.Zricks.com)**





## About Amantra

Higher living is nothing but a celebration  
of the smallest joys of life.

Embodied in a modern, integrated township spread  
over 22 acres, designed by HOK of USA, an internationally  
renowned architectural firm. Amantra is designed to take you  
on a high and keep you there with a masterplan  
incorporating an interesting interplay of mid and high-rise  
towers, it weaves in the elements of nature.  
to give you commanding heights, infinite views,  
a jog in the clouds, cool and airy homes,  
all the modern conveniences, sports,  
entertainment and more than ample security,  
So that you can enjoy all the conveniences  
you deserve and yet stay far  
from the hustle-bustle of it all.





## The elements of higher living

Design that isn't just for design's sake. It fulfills a higher purpose here.  
Elements work in harmony to make superlatives a part of the ordinary.  
And life worth living.



### To the edge and back

Dive into the majestic swimming pool that lets your eye stretch to infinity. Reach the edge and feel one with the boundless sky. A small design element that evokes awe every time you see the commanding views all around.



### A complete workout

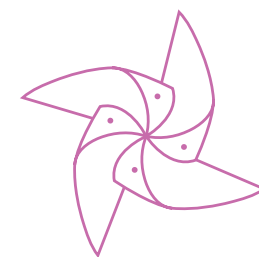
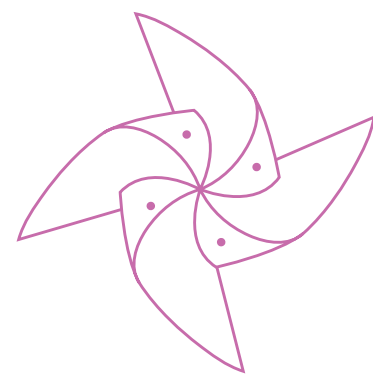
Amantra features a modern clubhouse spread over 25,000 sq. ft. with state-of-the-art gymnasium and sports facilities for the whole family, meditation center cum yoga room and multi-purpose room that you can use to celebrate birthdays, festivals and much more.



## Life's a breeze

With wind-funneling, Amantra is not only environmentally sensitive; it also keeps each home as well as shared space, actively ventilated and cool. The self-shading conditions help reduce the dependency on artificial air-conditioning by channeling air through the building mass.

All designed so that your life will be cool and comfortable, naturally.

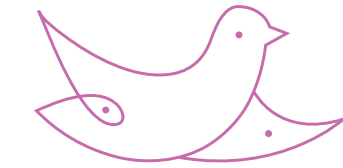
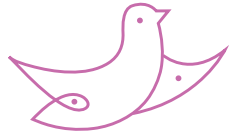


## Cooler homes

At Amantra, sun shading fins on the south side help in blocking out excessive heat and keep things bright and cheerful.

The east-west orientation of the staggered towers allow for an interesting interplay of light and cool shade.





### **A jog in the sky**

The entire 14th floor terrace is interconnected and green-scaped, with a wide track running all the way and back. So even if a jog in the pollution-free environment doesn't leave you breathless, the amazing views surely will.



## Beauty lies in the details

A few hundred square feet becomes habitable when one looks at things holistically as well as paying enough attention towards the nitty-gritty's. The result is carefully crafted lifespaces designed with your comfort in mind.



### **Living your dream actually**

Life inside Amantra is as delightful as the masterplan promises to be.

The luxurious homes make the most of the spaces available.

Close views of courtyards scattered throughout the towers break the long, open vistas to the East. Increased privacy offers a serene living environment.

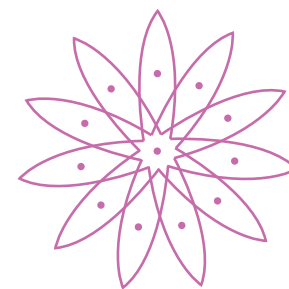
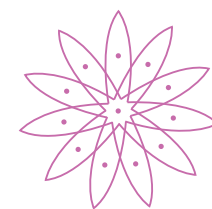
Wake up everyday, knowing fully well that you are actually living your dream.





## A floral palette

The road to higher living has been set among perfectly manicured gardens that make the experience transcendental.



### Paint your mood

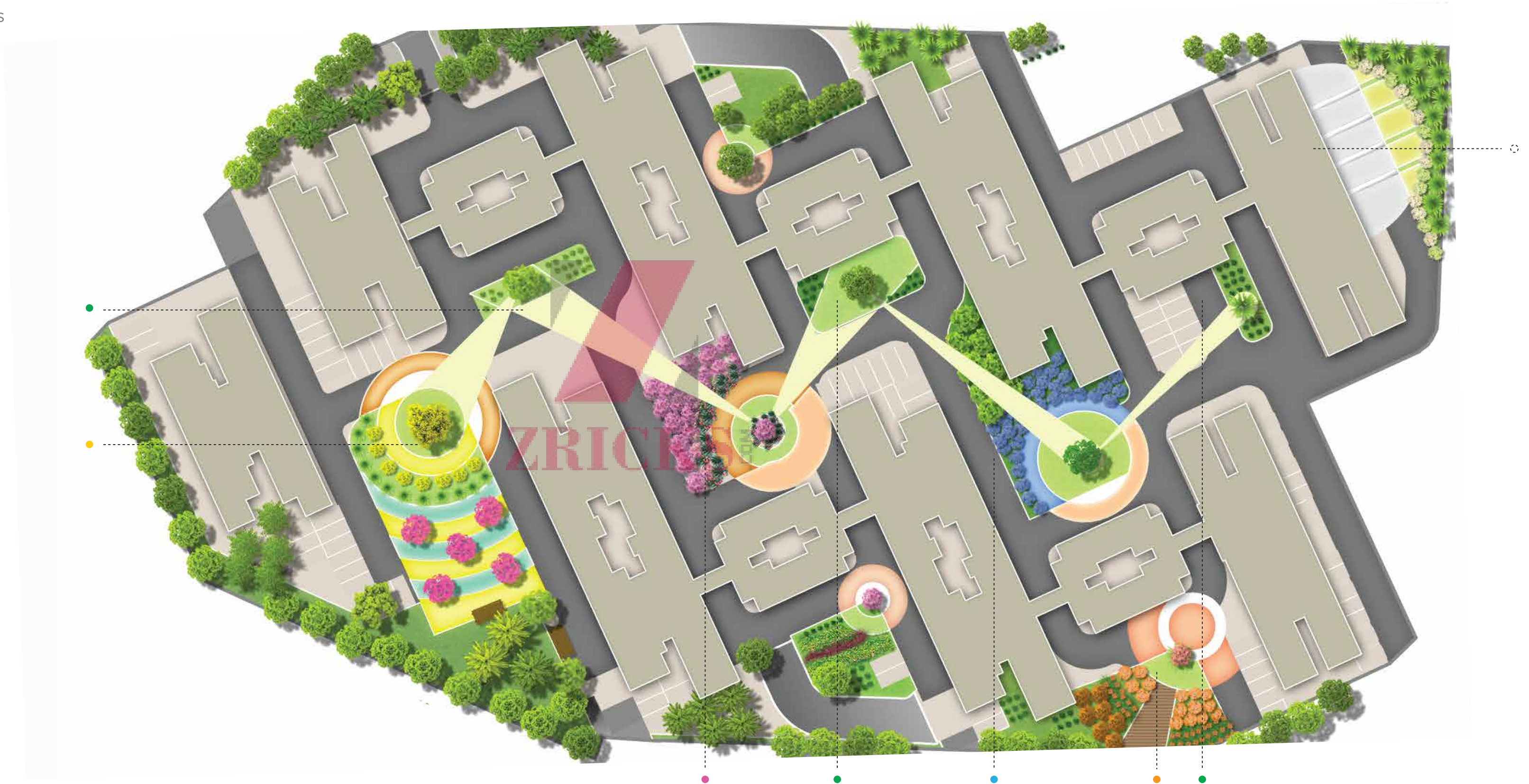
Colors can dictate your mood and enhance your state of mind. The five colour-coded gardens at Amantra create a unique, dramatic landscape effect resplendent with color that can be experienced from vantage points.

Named Plaza of Cheerfulness (Yellow), Plaza of Relaxation (Pink), Plaza of Relief (Blue), Plaza of Energy ( Orange) and Plaza of Pease (White), each serves as a mood enhancer to lift you up towards higher living.



## Podium Landscape Layout

- Yellow plaza of cheerfulness
- Green Island
- Pink plaza of relaxation
- Blue plaza of relief
- Orange plaza of energy
- White plaza of peace



# Project Master Plan

- 1

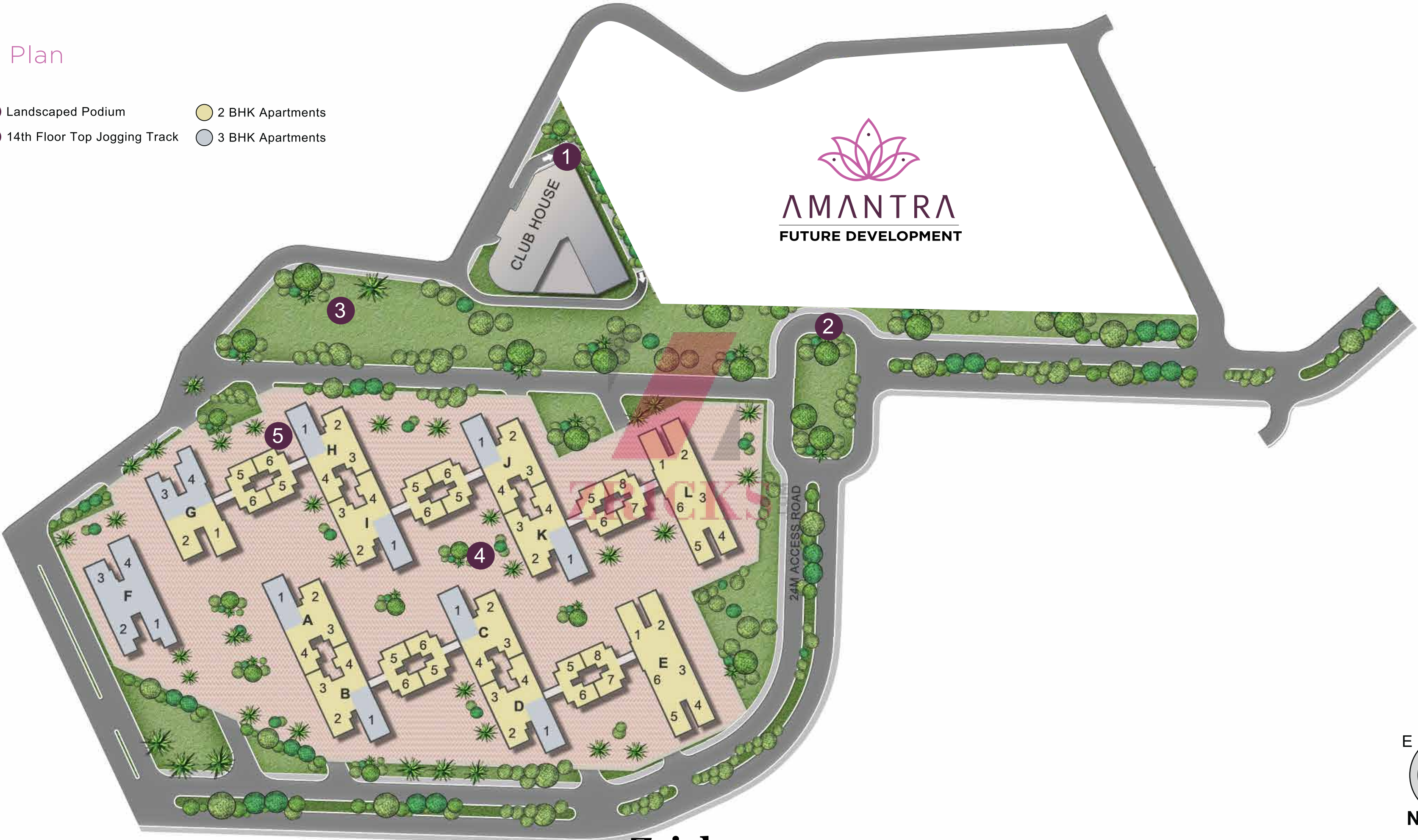
Infinity Swimming Pool
- 2

Landscaped Island
- 3

Play Courts
- 4

Landscaped Podium
- 5

14th Floor Top Jogging Track
- 2 BHK Apartments
- 3 BHK Apartments



Project Floor Plan

TOWER	C	
No. of floors	S+24	S+14
Refuge floors	5, 10, 15, 20	
Refuge flat nos.	3	

- 2 Bed Residences
- 3 Bed Residences



TENTATIVE LAY OUT

Disclaimer: Future development can shift to other areas and as per the regulatory approval.

www.Zricks.com



FLOOR PLAN

Disclaimer: The Plan shown is only indicative and subject to variations and the modifications by the company without any notice.

CA : Carpet Area

Project Floor Plan

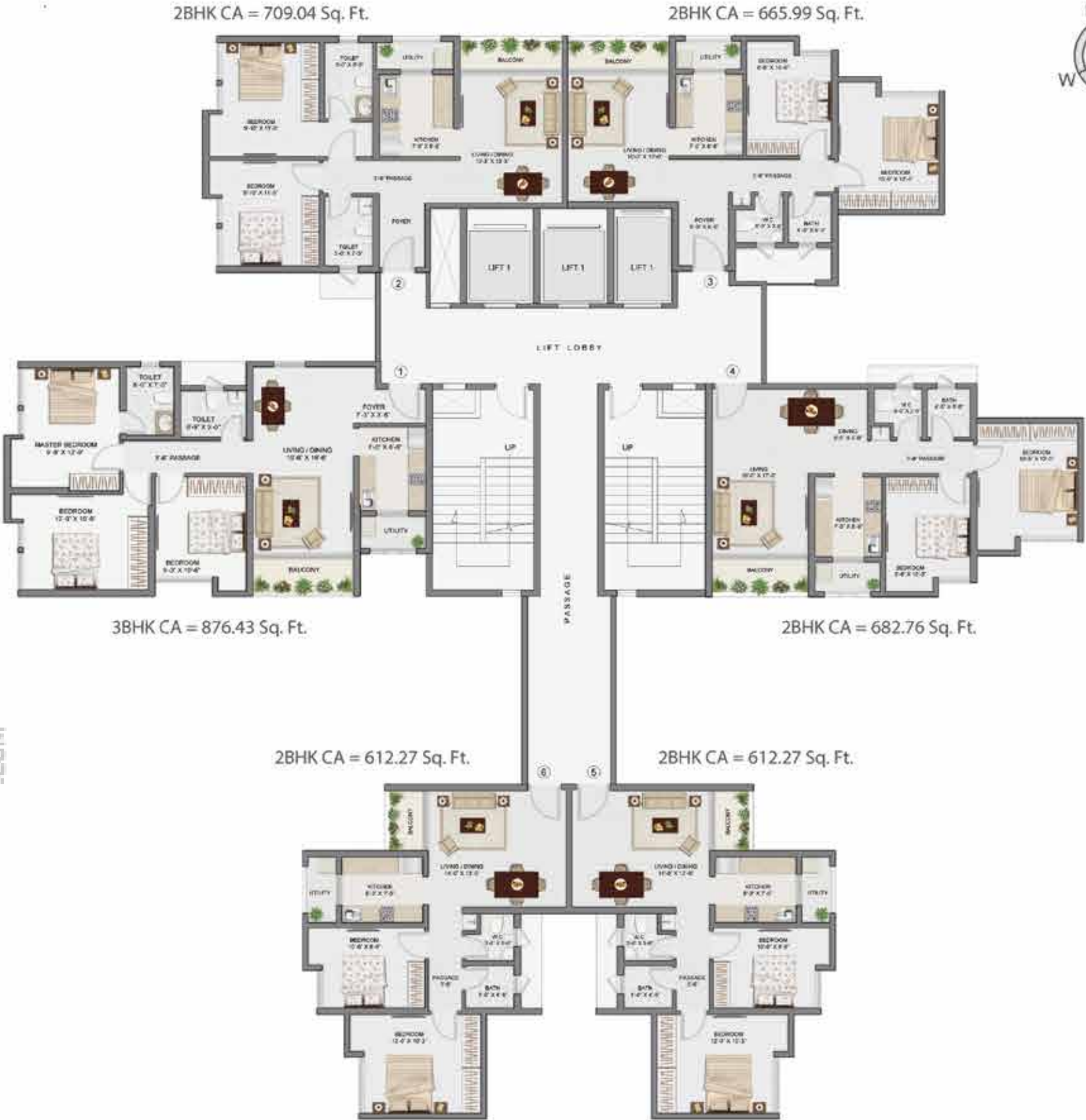
TOWER	B		D	
No. of floors	S+24	S+14	S+24	S+14
Refuge floors	5, 10, 15, 20		5, 10, 15, 20	
Refuge flat nos.	4		4	

- 2 Bed Residences
- 3 Bed Residences



TENTATIVE LAY OUT

Disclaimer: Future development can shift to other areas and as per the regulatory approval.



FLOOR PLAN

Disclaimer: The Plan shown is only indicative and subject to variations and the modifications by the company without any notice.

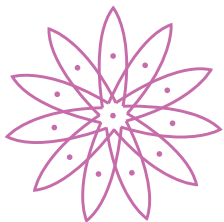
## ECO-sustainable by design

- 75% of waste generated during construction to be diverted to other sites where it shall be reused, thereby protecting the environment.
- More than 10% of building material to consist of recycled content that is manufactured locally. Also, more than 50% of this material to be extracted regionally in an effort to reduce environmental impact.
- Provision to harvest 95% of rainwater runoff in order to reuse and save potable water.
- Houses to be equipped with water efficient fixtures, saving 30% water in the process.
- Sewage treatment plant to have the capacity to treat 100% Black and Grey Water so that it can be reused for flushing and landscaping purposes, Again, this saves potable water.
- Campus to follow a waste management plan that will encourage recycling of office waste (papers, news papers plastics, and glass) by having waste segregation on every floor and a central collection and disposal facility.
- Campus to not have any harmful refrigerant for air-conditioning, fire suppression or any other mechanical systems. Thereby helping maintain atmospheric integrity and protecting residents from harmful, carcinogenic UV rays.
- Residents to enjoy 30% more ventilated areas than other housing complexes. Further, smoking to be prohibited on the entire premises.
- Materials used in construction (adhesive, sealants, paints, carpet, carpet adhesive and composite wood) to have VOC values (Volatile Organic Compound). Thereby offering better Indoor environment quality.



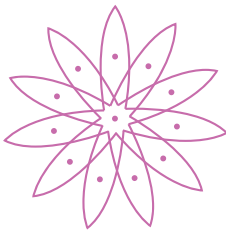
# Modern Amenities

- Reception area with seating arrangement
- Three level car parking
- Tennis court, badminton court
- Children’s play area
- Jogging track on top of 14<sup>th</sup> floor
- Wind channeling for airy homes
- Sun shading for cooler homes
- Over 25,000 sq ft clubhouse
- Infinity edge swimming pool along with a kids pool
- Indoor games room with table tennis, pool tables
- Separate arrangement for playing cards / chess and carrom
- Meditation room / yoga room / aerobics room
- Multipurpose hall
- Sauna, steam and jacuzzi
- Audio visual room
- Snack bar



# Specifications

- Living/Dining: Vitrified flooring, sliding french windows, OBD paint
- Balcony: MS railing, anti-skid vitrified tiles
- Kitchen: Anti-skid vitrified flooring tiles, single sink board with drain board, exhaust fans
- Utility balcony in the kitchen: Anti-skid ceramic flooring tiles, MS railing, electrical, drain and water supply point provided
- Master and other bedrooms: Vitrified flooring, anodised aluminium window frame
- Toilets: Wall mounted WC, wash basin with counter in master toilet, high quality fittings in toilets and bathrooms
- Security: Video door phones in all homes



## Location Map

### ROAD

20 minutes from Thane Toll Naka  
30 minutes from Mahape – Vashi

### DISTANCES

Kalyan Station - 6 kms  
Khadakpada - 4 kms

Proposed International Airport - 30 mins