

*Live the life you've  
always imagined.*





# La Montaña



Imagine an uninterrupted view of nature from your window. Imagine shopping trips that never feel like a chore. Imagine a little more time with your loved ones. Here's a home that gives you all of life's pleasures. La Montana, an integrated township with all the amenities you need to live the life you always wanted. A township with a Mediterranean soul both in its terraced layout and in its architecture. La Montana is strategically located near Pune, in the lush green landscape of Vadgaon, near Talegaon with the hills of Lonavala as its neighbours. Which means peace and convenience have finally found an address where they can coexist.



It is believed that Olives were first cultivated in Syria approximately 6,000 years ago.



*Everything you've  
imagined in your home.*



La Montana is situated in 20 acres of terraced land. So no matter which home you choose, you will always have an uninterrupted view of lush green nature and the hills nearby. Space is another highlight here. In fact 70% of the township is reserved to be open. Even the homes are designed to maximise your living space.

You'll find recreational facilities to match a mood, fulfil a need or make a wish come true. The landscaped gardens, the contemporary clubhouse with a modern gymnasium and the banquet hall are just the beginning. Then there's a shopping area, a healthcare centre, a reputed school and all the conveniences you would want. Choose a home and you can live the life you always desired.



The Mesopotamians were credited with producing the first wines in 6000 B.C.



*A home straight out  
of the Mediterranean.*



Designed by reputed international architects F+A of the US, La Montana is distinctively Mediterranean in its style. Starting with the terraced land, the buildings feature porticos, classic arches, cut stone facades and terra-cotta railings. Even the materials used - stone, red roof tiles, wrought iron and stucco - owe their origins to Mediterranean architecture.

The spaces in and around the township follow the same design style. There are walkways and pebbled garden paths within and between the building complexes, and lush greenery and lawns throughout the open plazas and courtyards.

Another very important aspect of La Montana is the sense of belonging that is created by the architecture. The buildings are designed to open to each other and create community spaces between them. You'll see it in the interior courtyards, the open public squares and the communal gardens in the township.



Before incandescent lamps, cities had gas lighting. The earliest of such street lamps were built in the Arab Empire, especially in Córdoba, Spain.





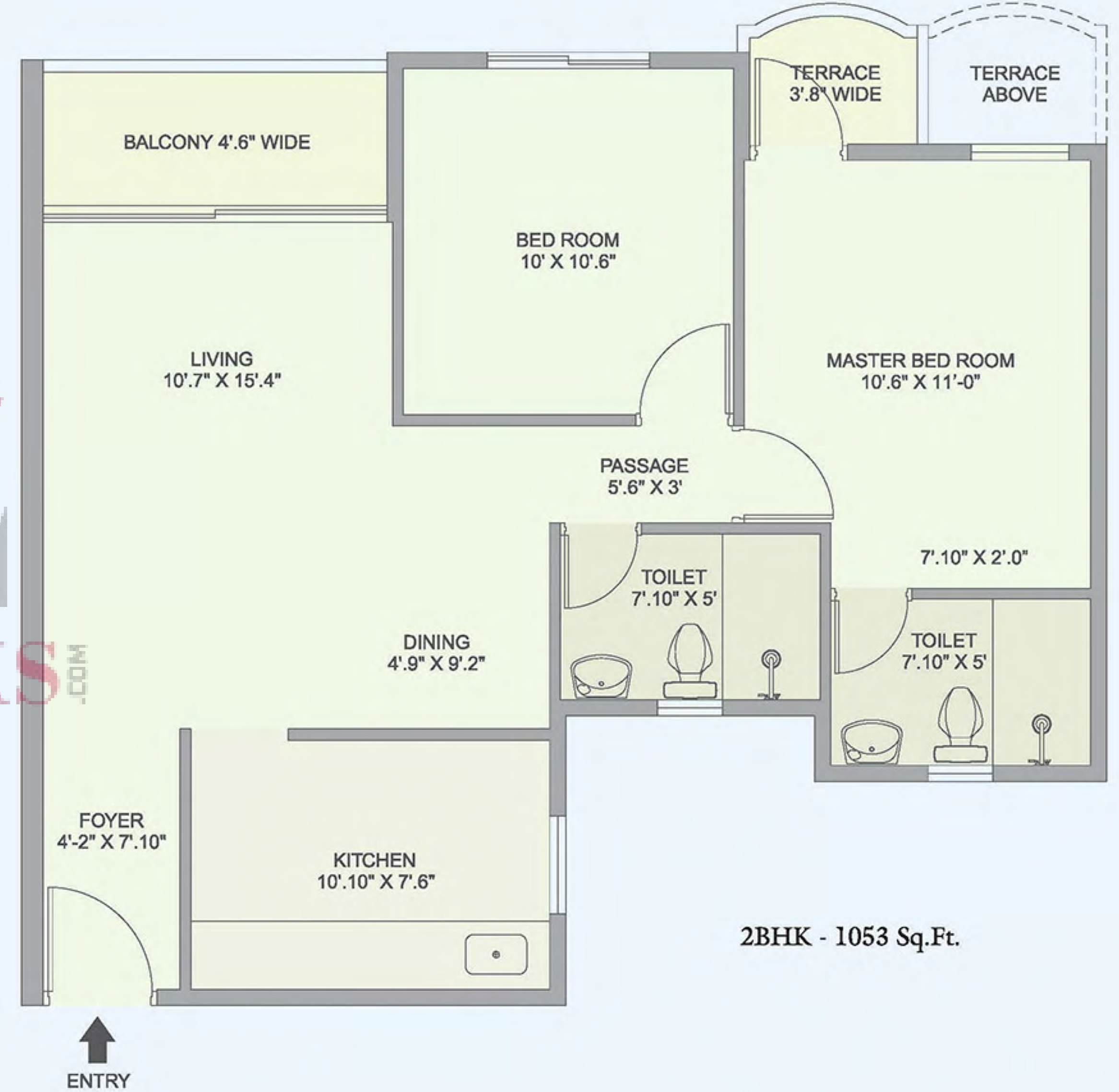
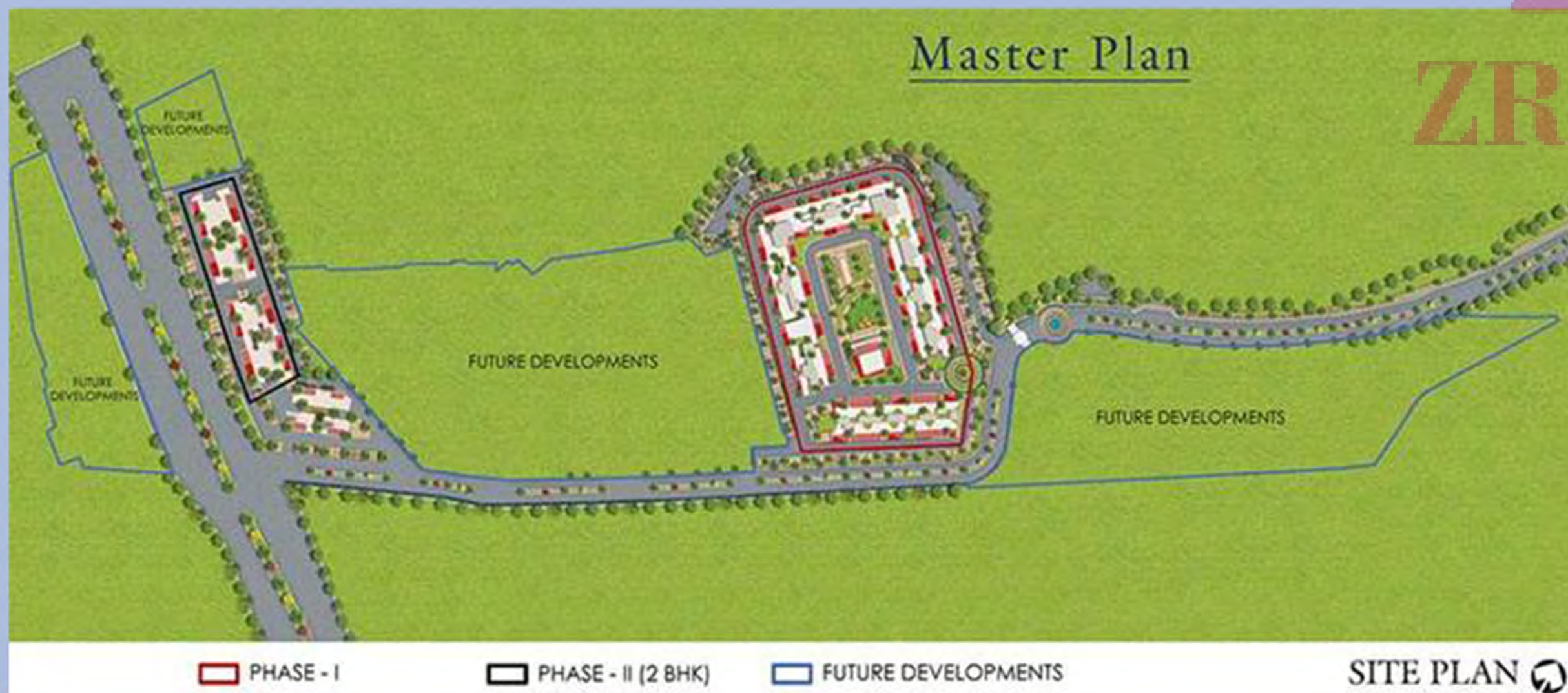
This image is for representation only. The company reserves the right to add, delete or alter any details and/or specifications.

[www.Zricks.com](http://www.Zricks.com)



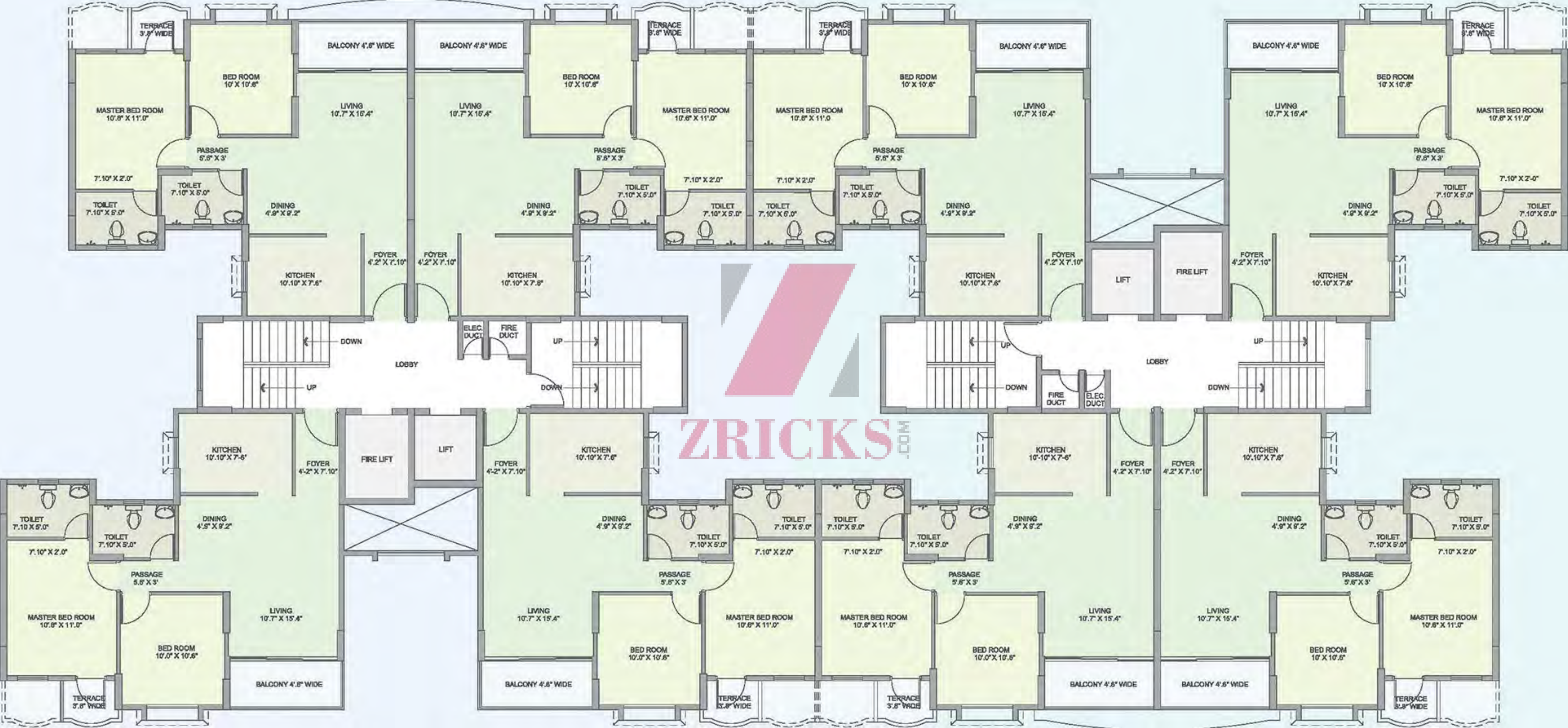
# An architect's plan of your imagination.

You could think of La Montana as an integrated township or you could think of it as your imagination coming to life. Own a home here, it's the first step to fulfilling the desires of a lifetime.





2BHK - FLOOR PLAN





# Amenities for the life you imagine.



## AMENITIES

### Clubhouse and sporting facilities

State-of-the-art clubhouse, Fully equipped modern gymnasium with steam and sauna, Jacuzzi, Banquet hall, Table tennis room with two tables and Indoor games room.

### Open spaces and conveniences

Lush green landscaped gardens with traffic-free children's play area, Ample covered and open parking space, Jogging track, School, Shopping area and Healthcare centre.

## SPECIFICATIONS

### General

Grand entrance lobby, Two elevators in each tower, Premium marble and granite flooring in lift lobbies, Corridors and staircases up to 1st floor landing and Polished Kota stone in staircases from 2nd floor.

### Rooms

2' x 2' vitrified tile flooring in living, dining and all bedrooms, Premium quality oil bound distemper on internal walls and ceiling, Anodized sliding windows, Polished teak veneer flush door for main entrance and Solid core painted flush doors for other rooms.

### Kitchen

Matt finish ceramic tile flooring, Granite platform with stainless steel sink and drain board, 2 feet high ceramic tile dado above kitchen platform and exhaust fan.

### Bathrooms / Toilets

Matt finish ceramic tile flooring, Ceramic tile dado up to door height, Superior quality CP fitting & fixtures, Concealed plumbing, Premium quality EWC & WHB, 15 litre geyser in master bathroom and Exhaust fan.

### Balconies

Matt finish ceramic tile flooring and Synthetic enamel painted MS Railing.

### Electrical fittings

Modular switches, Sufficient points in all rooms, Concealed copper wiring, AC point in all bedrooms and living / dining room, Cable TV and telephone points in living room and master bedroom, Provision for inverter and power backup in common areas + Limited to 0.5 KVA in 1BHK and 0.75 KVA in 2BHK.

### Security

Premium brand main entrance door lock, Integrated security - Boom gate, Intercom and Video door phone.



In the olden days of Spain, the Vihuela guitar was played by the fashionable society while the Guitarra Latina was played by the ordinary folk.



*Everything's nearby,  
just like you wished.*

La Montana is not just scenic, it is also strategically located. It's just off NH4 and offers easy access to the Mumbai-Pune Expressway. And it has all the makings of 'prime real estate' with the offices of General Motors, Posco and L&T in the Talegaon MIDC nearby.



**Within 10 minutes from La Montana:** Banks & ATMs • Petrol Pump • Vegetable Market  
• Talegaon railway station • Hospitals • Floriculture Parks

**Within 30 minutes from La Montana:** Pimpri • Chinchwad • Hinjewadi • Lonavala • Khandala  
• Chakan MIDC (Volkswagen) • Pune city



Get in touch with us, to live the life you imagined:

**Site Address:** La Montana, Opp. Talegaon MIDC Junction, Old Mumbai-Pune Highway, Vadgaon, District Pune.

**Sales Office:** Business Guild, Office No. 101, First Floor, Law College Road, Opp. Krishna Corner, Erandwane, Pune: 411 004.

**Corporate Office:** TATA Housing Development Company Ltd., 12th Floor, Times Tower, Kamala Mills Compound, Senapati Bapat Marg, Lower Parel, Mumbai 400013.

Call 1800 3004 8282

email us at [mktnginfo@tatavaluehomes.com](mailto:mktnginfo@tatavaluehomes.com) or visit [tatavaluehomes.com/lamontana](http://tatavaluehomes.com/lamontana)

This brochure is purely conceptual and not a legal document. This company reserves the right to add, delete or alter any details and/or specifications.

**[www.Zricks.com](http://www.Zricks.com)**