

adani™



pratham

1 & 2 BHK Apartments

ZRICKS.COM

Delivered 290 homes in Phase 1.  
If you had missed out earlier, here's your chance.

Adani Realty proudly presents  
**Pratham - Phase 2**

[www.Zricks.com](http://www.Zricks.com)



ZRICKS

Pratham: A new hope, a new direction.

Who says, "The West is beyond your reach?"

Adani Realty, the real estate arm of the renowned Adani Group, brings to you Pratham - Phase 2.

Located behind Nirma University, Pratham is a few minutes away from both S.G. Highway and S.P. Ring Road. It is a residential scheme with all the facilities that you would require. It gives you an opportunity to buy property at an affordable price.

The prime location of Pratham offers convenient access to major centres of the city, such as schools, colleges, workplaces, malls and multiplexes.

[www.Zricks.com](http://www.Zricks.com)







Pratham offers options of well planned 1 BHK and 2 BHK apartments at a never before price. The intelligently designed apartments offer optimum utilisation of space and are equipped with good quality fixtures.



Thoughtfully provided amenities make any place come alive. Be it landscaped greens, gymnasium, children's play area or senior citizen sit-outs, Pratham is equipped with everything that one looks for. Because, we understand that it's not just about living; it's about living comfortably.



PRATHAM MASTER PLAN LAYOUT

Apartments  
1BHK  
2BHK

SITE LAYOUT FOR PHASE 2 DEVELOPMENT

PHASE 1: READY FOR POSSESSION







[www.Zricks.com](http://www.Zricks.com)

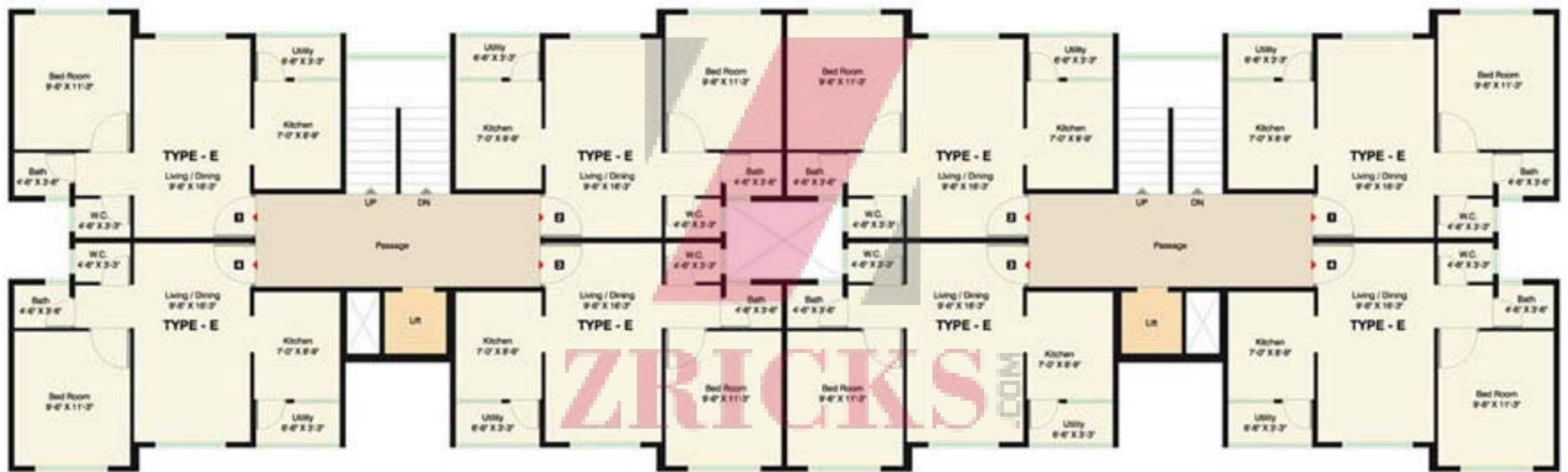
1 BHK FLOOR PLANS & UNIT PLANS

# FLOOR PLAN

Block No:

U1

U2

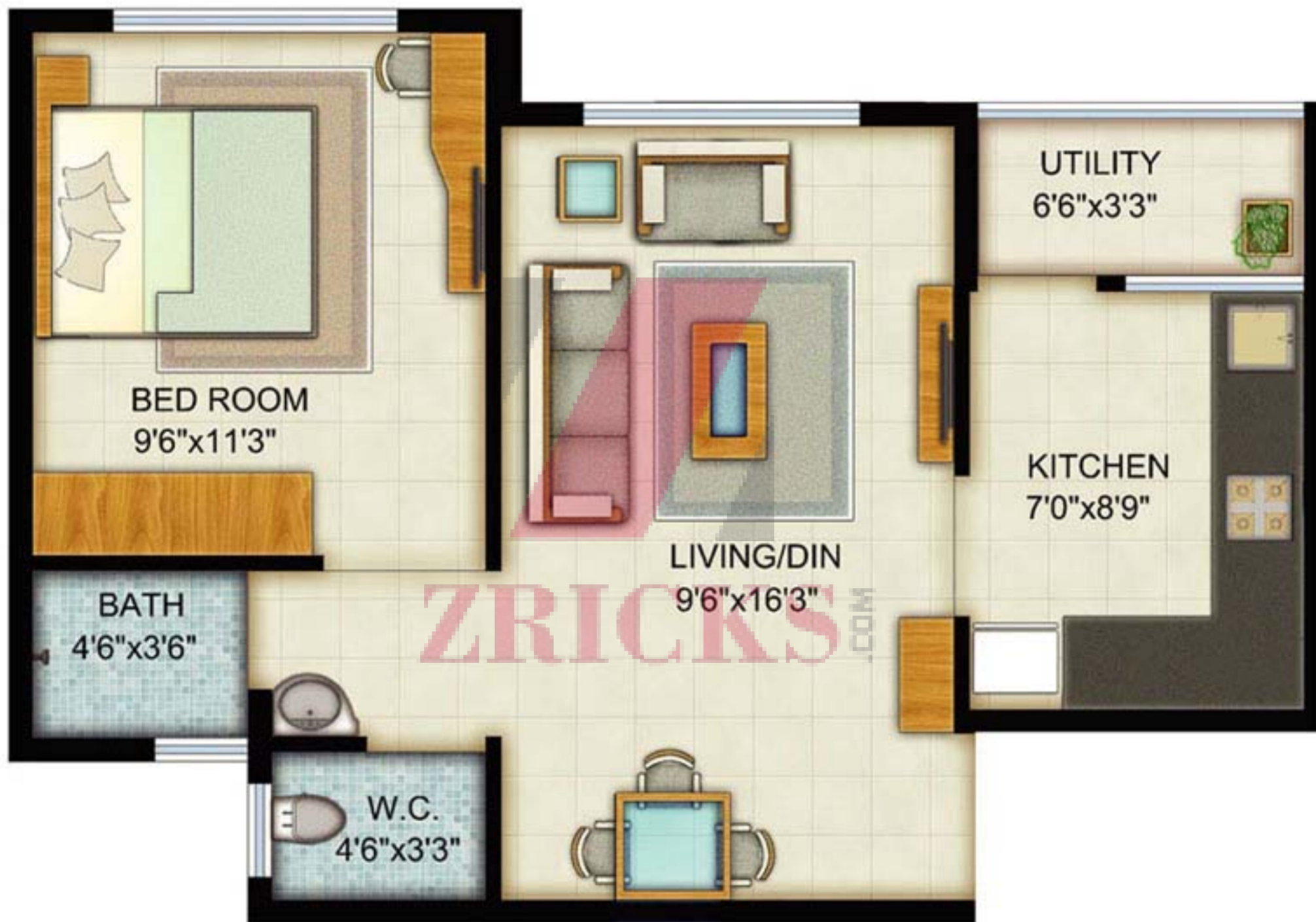


**TYPE-8: TYPICAL FLOOR PLAN (1 BHK)**



# UNIT PLAN

**Block No:**  
U1 : 1,2  
U1 : 3,4  
U2 : 1,2  
U2 : 3,4



SALEABLE AREA-662 SQ. FT.

TYPE-E: UNIT PLAN (1 BHK)



[www.Zricks.com](http://www.Zricks.com)



# FLOOR PLAN

Block No:  
P



**TYPE-3: TYPICAL FLOOR PLAN (2 BHK)**



# FLOOR PLAN

Block No:

Q

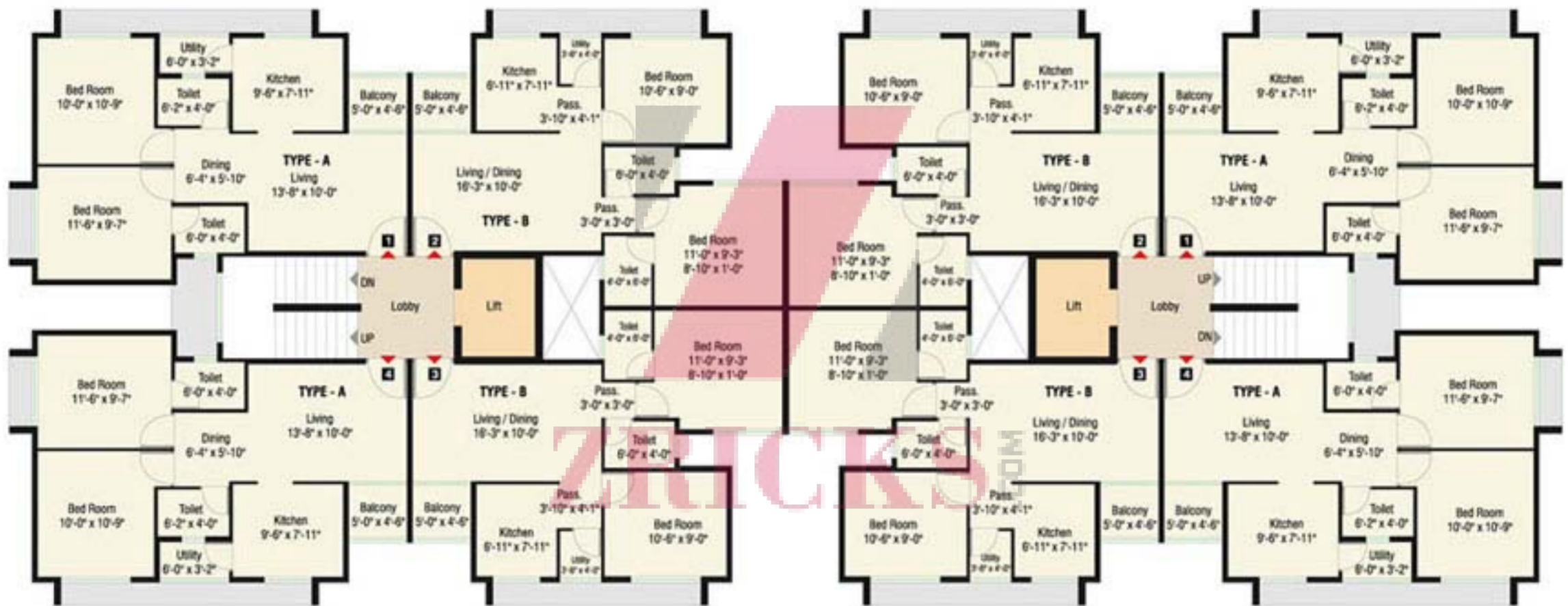


**TYPE-3: TYPICAL FLOOR PLAN (2 BHK)**



# FLOOR PLAN

Block No:  
01:02



**TYPE-1: TYPICAL FLOOR PLAN (2 BHK)**



# FLOOR PLAN

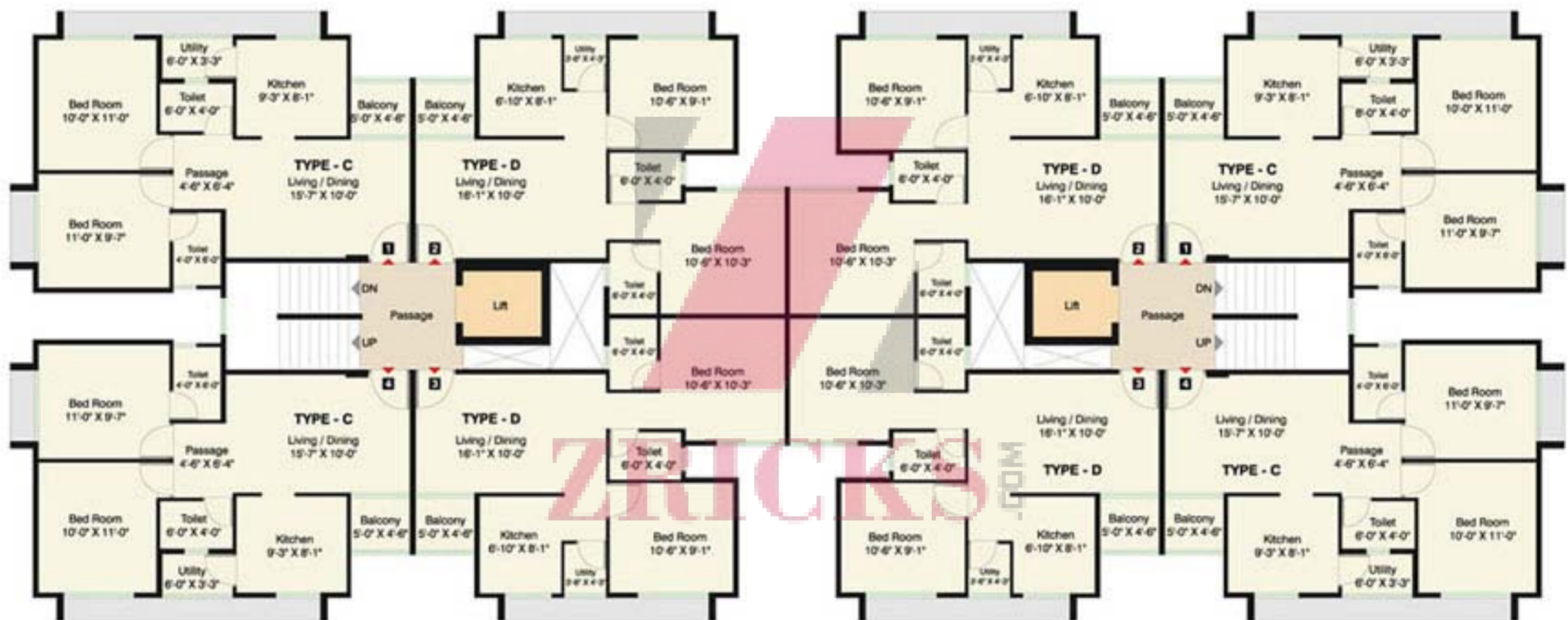
**Block No:**

N1 : N2

R1 : R2

S1 : S2

T1 : T2



**TYPE-6: TYPICAL FLOOR PLAN (2 BHK)**

# UNIT PLAN

## Block No:

- N1 : 2,3
- N2 : 2,3
- R1 : 2,3
- R2 : 2,3
- S1 : 2,3
- S2 : 2,3
- T1 : 2,3
- T2 : 2,3



SALEABLE AREA-903 SQ. FT.

TYPE-D: UNIT PLAN (2 BHK)



# UNIT PLAN

Block No:  
O1 : 2,3  
O2 : 2,3



SALEABLE AREA-905 SQ. FT.  
TYPE-B: UNIT PLAN (2 BHK)

# UNIT PLAN

Block No:  
O1 : 1,4  
O2 : 1,4



SALEABLE AREA-953 SQ. FT.

TYPE-A: UNIT PLAN (2 BHK)



# UNIT PLAN

## Block No:

- N1 : 1,4
- N2 : 1,4
- P : 1,2
- P : 3,4
- Q : 1,2
- Q : 3,4
- R1 : 1,4
- R2 : 1,4
- S1 : 1,4
- S2 : 1,4
- T1 : 1,4
- T2 : 1,4



SALEABLE AREA-967 SQ. FT.

TYPE-C: UNIT PLAN (2 BHK)



[www.Zricks.com](http://www.Zricks.com)



# FLOOR PLAN

Block No:

K  
L  
M



**TYPE-9: TYPICAL FLOOR PLAN (1 & 2 BHK )**

# UNIT PLAN

Block No:

K : 2,5

L : 2,5

M : 2,5



SALEABLE AREA-649 SQ. FT.

TYPE-F: UNIT PLAN (1 BHK)



# UNIT PLAN

Block No:

K : 3,4

L : 3,4

M : 3,4



SALEABLE AREA-925 SQ. FT.

TYPE-E: UNIT PLAN (2 BHK)

# UNIT PLAN

Block No:

K : 1,6

L : 1,6

M : 1,6



SALEABLE AREA-930 SQ. FT.

TYPE-F: UNIT PLAN (2 BHK)



## Actual Images of Sample Flat



### **Specifications:**

#### Flooring

- Living / dining, bedrooms, kitchen – vitrified tiles
- Bathroom(s), balconies – ceramic tiles

#### Toilets

- Glazed ceramic tiles dado up to lintel level
- Good quality sanitary & plumbing fittings

#### Kitchen

- Marble platform with SS sink and dado of glazed tiles up to 2 ft.

#### Wall finishes

- Exterior walls - double coat plaster with exterior grade paint
- Interior walls - putty finish

#### Doors / windows

- Seasoned wooden door frame with flush shutters
- Powder coated aluminum windows with glass

#### Electrification

- Single phase concealed copper wiring with necessary points for geysers and air-conditioners
- DG set for back-up power supply to lifts, water pumps and common area lighting

#### Other amenities

- Passenger lifts in all towers

#### External development

- Paved surfaces for all movement areas



**Disclaimer**

All information is strictly for guidance purpose only and does not constitute part of an offer or contract. Use of such information without prior consent is not permitted. Plans are proposed and subject to change without prior notice. Information provided herein is subject to grant of approvals from the concerned authorities.



# adani™

## Realty

Adani Group, one of India's largest business houses, is a \$ 9.4 billion, 10,400 employee, diversified conglomerate with interests in Ports, Real Estate, Special Economic Zones, Power Generation, Oil & Gas Exploration & Distribution, Edible Oil, Coal Mining & Trading. Our businesses help people work, shop, cook, read and go about improving their daily lives.

Adani Realty, the youngest arm of the Adani Group, is developing about 50 million sq. ft. of real estate across Ahmedabad, Mumbai and Gurgaon.



**Shantigram**  
THE GOOD LIFE

Ahmedabad

T: 1800 233 56767

E: [info@shantigram.com](mailto:info@shantigram.com)

W: [www.shantigram.com](http://www.shantigram.com)



**WESTERN HEIGHTS**  
up and away

Mumbai

T: 1800 233 56767

E: [info@westernheights.in](mailto:info@westernheights.in)

W: [www.westernheights.in](http://www.westernheights.in)



**OYSTER**  
GRANDÉ

Gurgaon

T: 1800 233 56767

E: [info@adanim2k.com](mailto:info@adanim2k.com)

W: [www.adanim2k.com](http://www.adanim2k.com)



**Monte South**

Mumbai

T: +91 22 6724 8500

E: [sales@marathonrealty.com](mailto:sales@marathonrealty.com)

W: [www.marathonrealty.com](http://www.marathonrealty.com)



**Office:** CBD, Shantigram, Near Vaishnodevi Temple, S.G.Highway, Ahmedabad - 382 481.

**Site:** Pratham, Behind Nirma University, Near Vaishnodevi Circle, Off S.G. Highway, Tragad, Ahmedabad - 382 481.

info@adanipratham.com | www.adanipratham.com | Toll free: 1800 233 56767

[www.Zricks.com](http://www.Zricks.com)