



BREN
WOODS

ZRICKS

LIFE UNDER THE TREES

BREN CORPORATION
Registered Office: Balavana, #61,
Koramangala 5th 'A' Block, Bangalore - 560 095, INDIA
Phone: +91 80 67 888 999

Corporate Office: Primus, 8th Floor, opp. Forum,
Koramangala 7th Block, Bangalore - 560 095, INDIA

www.bren.com

Disclaimer: This document is purely conceptual and is by no means a legal document.
The Developers reserve the right to modify any details mentioned herein.

www.Zricks.com

When

was the last time
you climbed a tree
you read a book in the shade
you heard a sunbird calling
you felt calm within

when you did all this at home?



www.Zricks.com



COCONUT TREE



MANGO TREE




TEAK TREE



FIRST THINGS FIRST.
THE TREES
OF LIFE.

We didn't touch them, we built around them. And all this means that you'll see.


Family, work, recreation, and relaxation all come together harmoniously. Built on the concept of peace and privacy, the 2-3 BHK apartments let you be you. And discover new sides to yourself.




The Large Green Barbet (*Megalaima zeylanica*) gets its name from the bristles which fringe its heavy bill. You know a Barbet is nearby when you hear the distinctive "kutroo... kutroo" through the leaves rustling in the breeze.




Rose-Ringed Parakeets (*Psittacula krameri*) are found in sub-tropical, wooded areas around the world. Don't be surprised if a cheeky parakeet occasionally mimics something you say!



The Blue Mormon (*Papilio polymnestor*) is a species of swallow-tailed butterfly found in green and forested areas. They are often seen floating around in gardens, with their rich, velvety black wings beating soundlessly in the breeze.



The Common Tiger (*Danaus genutia*) closely resembles the famous Monarch butterfly, and is found in areas with moist deciduous forests. They can be spotted flitting around in the monsoons.



The Red-whiskered Bulbul (*Pycnonotus jocosus*) perches proudly on branches, showing off its distinctive crest, red-vent and whiskers. On occasion, you'll see Bulbuls at Bren Woods putting on an elaborate dance with their heads bowing, tails spreading, and wings drooping.



Legend has it, the Three-Striped Palm Squirrel (*Funambulus palmarum*) got its stripes when Lord Rama caressed one on its back, impressed with its hard work in helping build a bridge to Lanka. These squirrels run about racing up and down tall trees.

WHOSE WOODS THESE ARE.

THE LIFE
IN THE TREES.

MAKE YOUR OWN HISTORY.

LIFE UNDER THE TREES

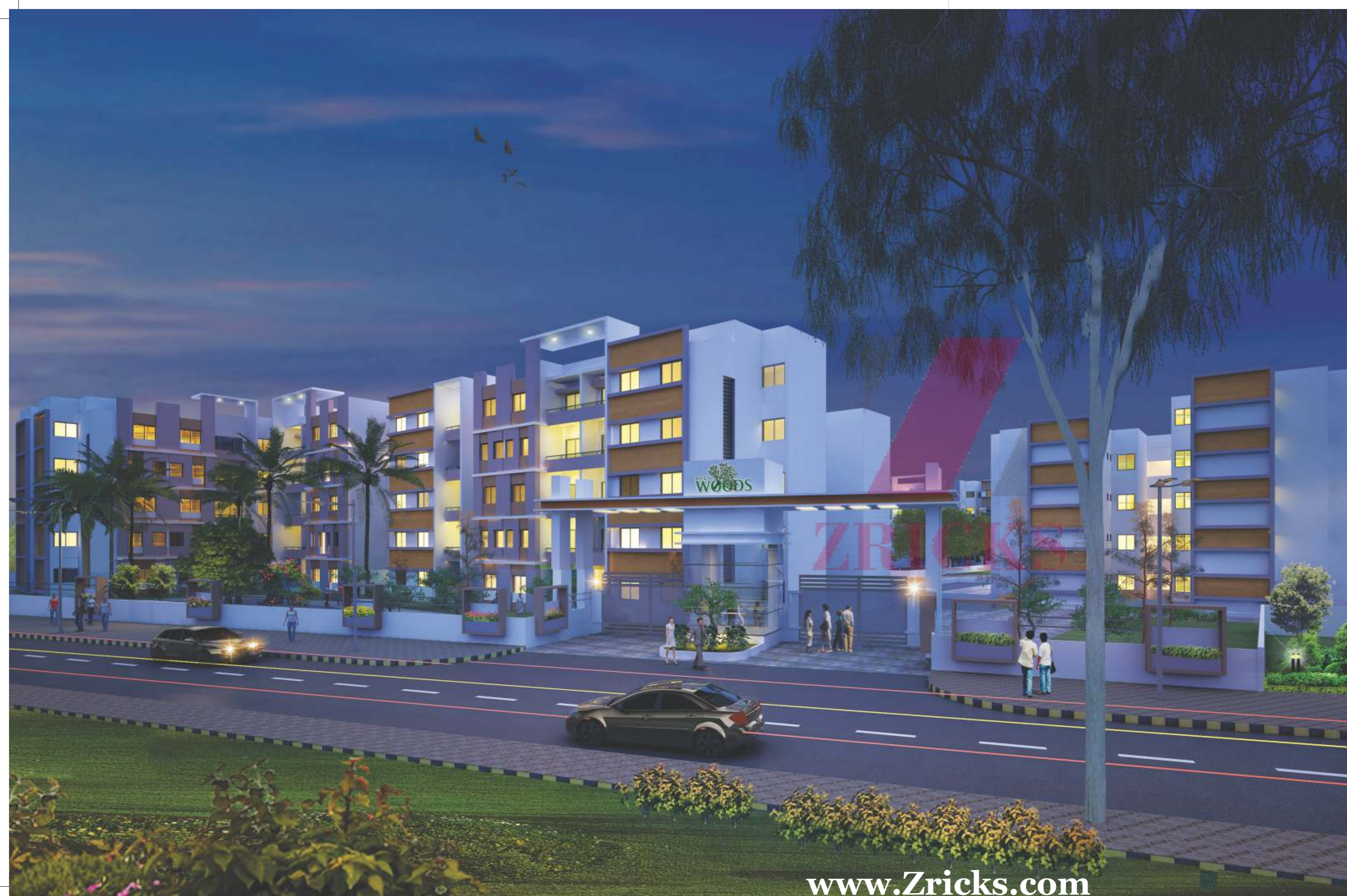
We know that when you buy a home, you're investing in much more than property or four walls. You're investing in the future of your family and children.

At Bren Woods, there are just 264 homes, built around acres of greenery and tall trees. Here, the outdoors is as it was always meant to be - shaped by nature. Shouldn't it shape your kids' childhood memories?



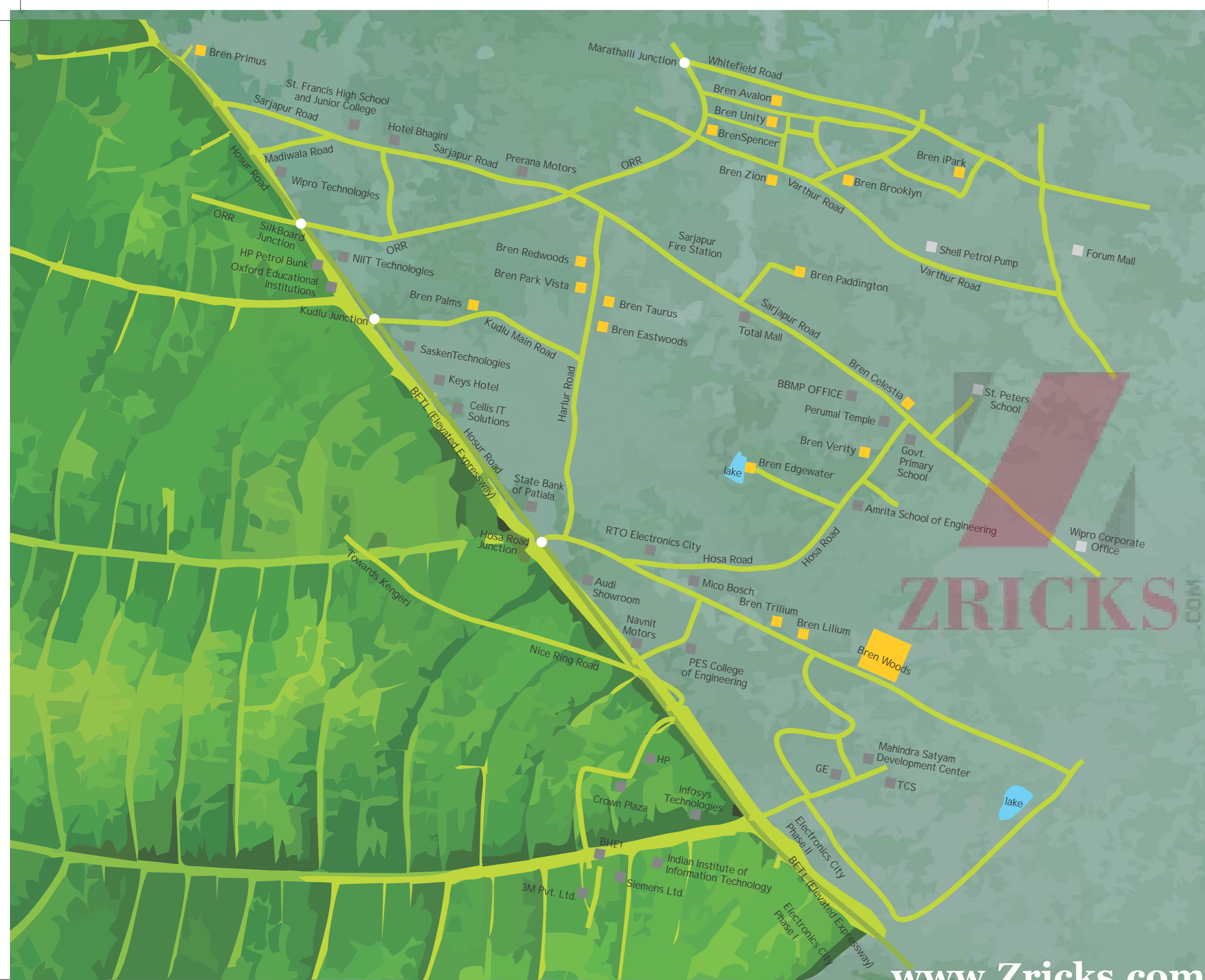
BDA Approved

www.Zricks.com



HOW TALL DO
THEY STAND? *With just
G+4 floors, these low-rise buildings ensure abundant
natural light and air through every home, and that
everyone is conveniently* **NOT VERY.**
close to terra firma.





TO FIND WOODS,
 Located just off Hosur Road,
 close to Electronics City Phase II, **DON'T LOOK FOR**
 Bren Woods is conveniently connected to North, **THE BUILDINGS.**
 East, and West Bangalore. Being at the heart of
 Bangalore's technology corridor, the apartments enjoy close proximity to Bangalore's biggest
 business and IT majors.

ZRICKS.COM

YOUR STORY BEGINS WITH A MASTERPLAN.

Even as you enter Bren Woods, you have a sense that there's something beyond the ordinary at this enclave. Take a walk around the 7 apartment blocks and the vast central courtyard, and you begin to understand why.

Past the attractive feature wall at the north eastern corner is the expansive kids' play area with giant chess and a special cave for kids. Stroll further on through the reflexology path, and you arrive at the pavilion. Due west around the clubhouse is the skating rink, pool deck and swimming pools. All this set amidst undulating lawns and tall trees!

- | | |
|---------------------------------------|--------------------------|
| 01 Grand Entry | 11 Pool Deck |
| 02 Trees from Cutout (Existing Trees) | 12 Skating Rink |
| 03 Entry to Blocks | 13 Food Court / Pavilion |
| 04 Snake & Ladder | 14 Elder's Zone |
| 05 Giant Chess | 15 Reflexology Pathway |
| 06 Hop Skip Jump | 16 Clubhouse |
| 07 Mini Amphitheatre | 17 Security Cabin |
| 08 Stage with Motif | 18 Exercise Station |
| 09 Swimming Pool with Water Feature | 19 Ludo |
| 10 Kids Pool with Water Feature | 20 Private Garden |
| | 21 Visitor's Car Parking |



Round the trees they ran
through the water
over the rook
past the square net
sliding across the rink
till
out of breath
they sprawled on the grass
and laughed
and laughed
and laughed
and laughed
and laughed



ZRICKSSM

- GIANT CHESS BOARD
- SKATING RINK
- KIDS' POOL
- SWIMMING POOL
- REFLEXOLOGY PATH

The Nest CLUBHOUSE

PARTY HALL

BADMINTON COURT

BILLIARDS ROOM

GAMES ROOM

GYM

Made for Kids
A play area -
Kids love caves!

So, Where Would You Like To Live?

Each of the 5 types of homes at Bren Woods have a few things in common: privacy, freedom and thoughtful design for convenience in everyday living. Whether you choose a ground floor home, a top floor apartment, or anything in between, you can rest assured that every home has been planned with the same exceptional attention to detail.

The Unit Plans



APARTMENT - 3BHK 3T-A: 1333 SFT



APARTMENT - 3BHK 3T-B: 1305 SFT

1 sqm-10.764 sq.ft



APARTMENT - 3BHK 2T-C: 1252 SFT

1 sqm-10.764 sq.ft





APARTMENT - 2BHK 2T-E: 1065 SFT



APARTMENT - 2BHK 2T-D: 1031 SFT



All Things Wise And Wonderful. What's Included.

STRUCTURE

- Earthquake resistance - Seismic zone II compliant RCC Framed structure
- Masonry works - 200 mm / 150 mm / 100 mm thick Concrete Blocks

PLASTERING

- Internal walls / ceiling - Cement Mortar with Lime rendering
- External walls / ceiling - Cement Mortar with Sand Face plaster

FLOORING FINISHES

- Foyer / Living / Dining / Master Bed room / Children Bedroom / Guest Bed Room / Kitchen - Vitrified Tiles (600 x 600 mm)
- All Balconies / Utility - Rustic Ceramic Tiles (300 x 300 mm)
- All Toilets - Ceramic Tiles (300 x 300 mm)
- Entrance Lobby - For Ground Floor - Granite / For Upper floors - Rustic Vitrified Tiles (600 x 600 mm)
- Staircase - Black Granite/cudappa stones (for treads) and Sadarahalli granits (for risers) or cudappa stones for all

DADOING FINISHES

- All Toilets - Ceramic Tiles (300 x 600 mm) up to 7' height
- Kitchen - Ceramic Tiles (300 x 600 mm) - up to 2' height from counter level

COUNTERS

- For Kitchen - 20 mm Granite platform with Single bowl single drain board of Futura / Nirali / Equivalent

DOORS & WINDOWS

- Main Door - Teak wood frames with both side veneered flush door shutter
- Internal / Toilet Doors - Hard wood Frames with Moulded skin doors, with enamel paint on both sides
- Windows - Powder coated Aluminium with Mosquito mesh in Living / Bedrooms
- Utility - Powder coated Aluminium window with opaque glass
- Ventilators - Powder coated Aluminium with provision for exhaust

MS RAILING & GRILLS

- All Balconies - Combination of Masonry & MS Railings as per design
- Staircases - MS Railing as per design
- Window / Balcony - Safety MS Grills for all Ground Floor Flats only
- Utility - MS Grills for all the flats

PAINTING

- Living / Dining / Foyer / Bedrooms / Toilets - Oil Bound Distemper
- Staircase / Lobbies / All Ceilings including inside flats - Oil Bound Distemper
- Exterior walls / Balconies - Cement Paint
- Bedrooms / Toilet doors - Enamel paint
- MS Grills - Enamel paint

PLUMBING & SANITARY

SANITARY WARES

- EWC - from Parry ware / Hind ware / Equivalent
- Washbasin - from Parry ware / Hind ware / Equivalent
- CP Fittings - from Parry ware / EssEss or equivalent
- Regular 2 in 1 shower - Parry ware / EssEss or equivalent
- Hot & cold water provision - For all washbasins in Toilets / For regular shower unit in toilets
- Kitchen Sink - Only Cold water tap provision
- Utility - Provision of Sink

HARDWARES

- Premium Quality Hardware - Dorset / Godrej / Equivalent

ELECTRICAL

- Power for each flat - 3 BHK - 4 KVA / 2 BHK - 3 KVA
- DG Backup for each flat - 2 / 3 BHK - 1 KVA / 100% for Common areas
- Fire resistance Electrical wires - Indo Asia / Anchor / RR Cables / LAP
- TV & Telephone points for Living & all Bedrooms
- AC points for all Bedrooms only
- Switch Plates / Switches - Modular Switches - Anchor / Salzer
- Exhaust fan provision in all toilets
- Geyser provision in all toilets
- Aqua guard provision in Kitchen
- Instant Geyser provision in Utility
- Washing machine provision in Utility
- Chimney / Hob point provision in Kitchen
- One light point in front of all Main door of the flats
- One 5 A point in all Balconies

LANDSCAPE

- Avenue trees / flower beds / lawns / Play area etc.

ELEVATORS

- One 10 Passenger lift of Kone / Johnson / Schindler / Equivalent per block

CLUBHOUSE SPECIFICATIONS

- 2 Nos. Treadmill / 1 No. Cross Trainer / 2 Nos. Cycles / 1 No. Bench press with weights / 1 No. Multi-gym of reputed brand
- Party hall with Pantry / Shuttle Court / 1 No. Table Tennis / 1 No. Billiards table / Indoor games for Kids
- Swimming pool with Toddler pool - Max 4' depth

MORE THAN BUILDINGS

Our background in the property development business stretches back four decades. Through our experience, we have developed expertise that enables us to adopt benchmark processes and technologies, including a unique understanding of core materials and efficient design. Our construction division is taking rapid but steady strides, as we widen our reach to more segments, such as the ultra-premium residential market, and to uncharted areas of the city.



We're in the business of making living better. Whether through homes, work spaces, retail spaces, or our exclusive retailing division, we believe that user experience matters above all else. But

Bren is not construction.

Bren is not retail.

Bren is not education.

Bren is a way of thinking.

Of people. Of values. Of service

Bren is progress!

ZRICKS.COM

RESIDENTIAL PROJECTS

From residential to office and retail spaces, our projects are defined by the attention to detail, planning and design that goes in to make them beyond ordinary. Whether it's a location that's strategic in more ways than one, or a layout that simplifies everyday work and life through extraordinary functionality, the end user is always guaranteed a great experience.



Redwoods, Off Sarjapur Road



Park Vista, Off Sarjapur Road



Spencer, Marathahalli



Brooklyn, Off Sarjapur Road



Unity, Marathahalli



Verity, Off Sarjapur Road



Equinox, Electronic City



Luxuria, Bannerghata Road



Celestia, Sarjapur Road



Avalon, Marathahalli



Trillium, Off Hosur Road



Paddington, Off Sarjapur Road



Palms, Off Hosur Road



Edge Waters, Off Sarjapur Road



Padukone Plaza, Koramangala



Junction, Koramangala



The Leisure Well, iPark, Whitefield



Star Center, Bannerghata Road

RETAIL SPACES

COMPLETED

- iPark, EPIP Whitefield
- Primus, Koramangala
- Maximus, Sadashivnagar
- Taurus, Sarjapur Road
- Balavana, Koramangala
- Towers, Bannerghatta Road
- SS Plaza, BTM Layout

ONGOING

- Optimus, Koramangala
- Mercury, Sarjapur Road
- Cyber, Koramangala

OFFICES

COMPLETED

- Zion, Varthur Road
- Viva Mall, KG Road

ONGOING

- Star Center, Bannerghatta Road



iPark, Whitefield



Primus, Koramangala



Balavana, Koramangala



SS Plaza, BTM Layout