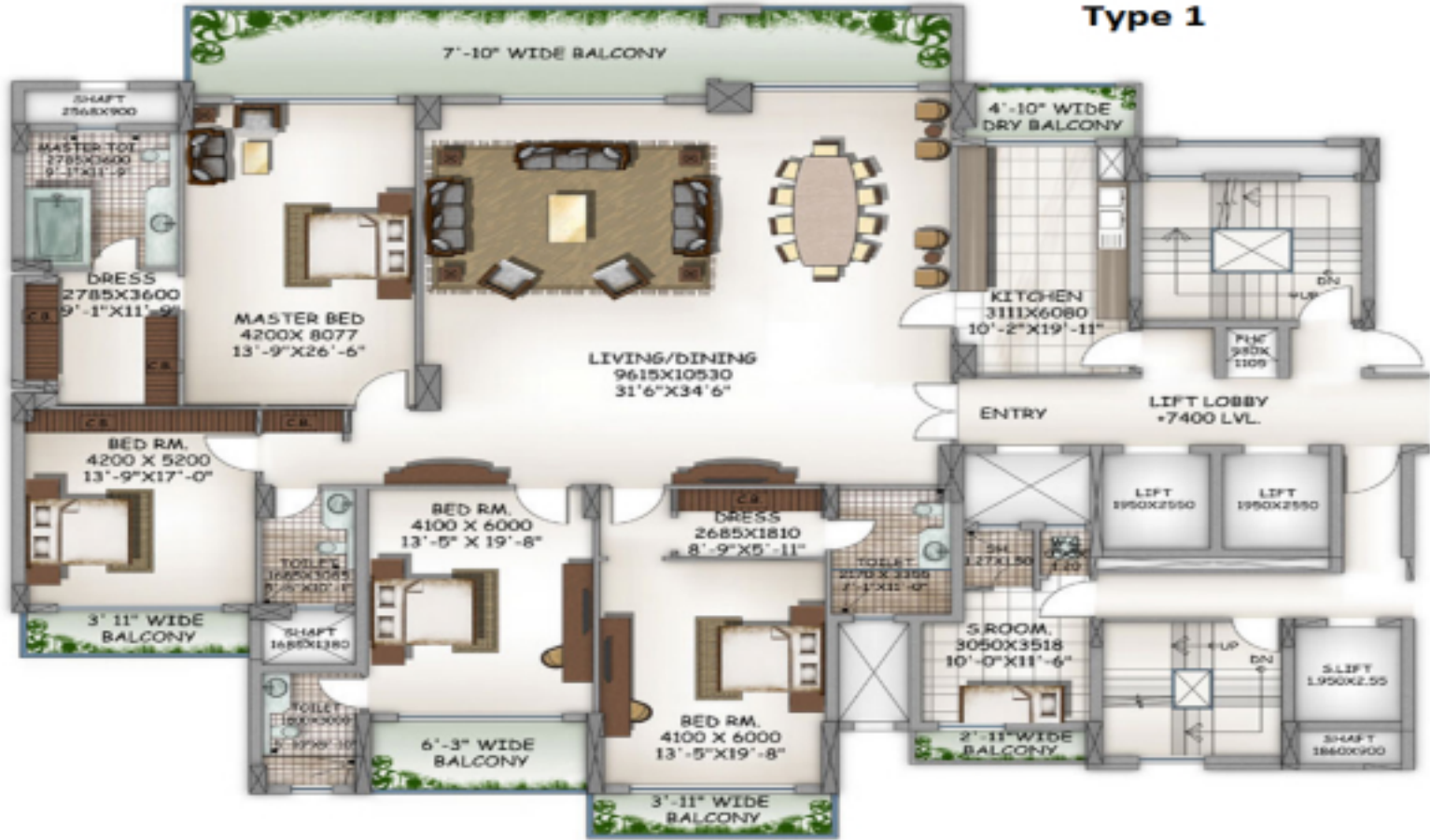




Greater Kailash-II, New Delhi



# Type 1



TENTATIVE APARTMENT PLAN

APARTMENT TYPE A01  
(SECOND TO 8TH FLOOR)

<b>DLF LIMITED</b>	<b>KING'S COURT, W-Block</b> <i>Greater Kailash II</i>	<b>544.2 SFT</b>
--------------------	---	------------------





GROUND FLOOR PLAN



FIRST FLOOR PLAN



SECOND FLOOR PLAN



THIRD FLOOR PLAN

TYPICAL TOWN-HOUSE PLAN (GROUND, 1ST, 2ND AND 3RD FLOOR PLANS) - TENTATIVE PLAN OF TOWN-HOUSE 3,7&9 AND MIRROR IMAGE OF TOWN-HOUSE 2,4.&8

TENTATIVE PLAN OF TOWN-HOUSE NO 3, 7 & 9

TENTATIVE PLAN OF TOWN-HOUSE NO 2, 4, 8 & 6 IS MIRROR IMAGE OF THIS PLAN



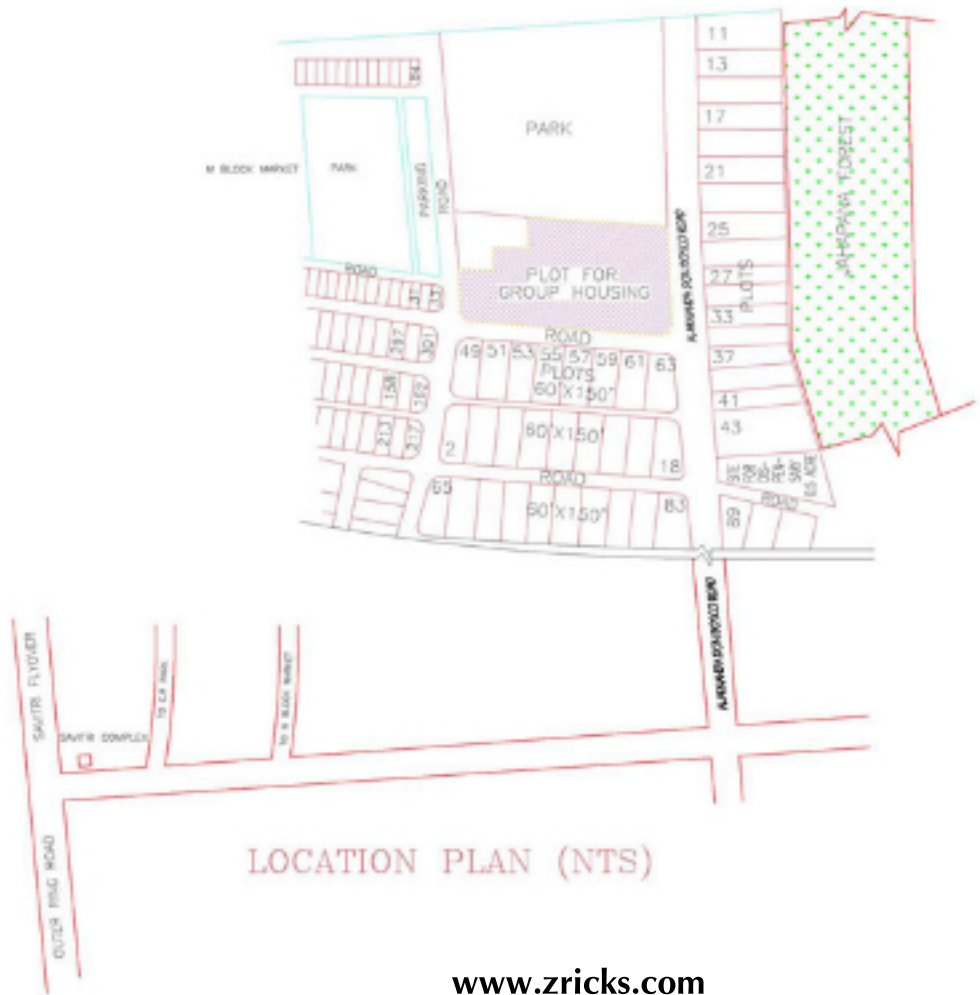
PROJECT

**KING'S COURT, W-Block**  
**Greater Kailash II**  
[www.zricks.com](http://www.zricks.com)

TENTATIVE SALEABLE AREA

**6976 SFT.**





LOCATION PLAN (NTS)



M-BLOCK MARKET

PARK

JAHAPANA FOREST

PARK

12 M WIDE ROAD

24.4 M WIDE ROAD

PLOTTED DEVELOPMENT

12 M WIDE ROAD

DLFA

"KING'S COURT"

W BLOCK SITE PLAN

www.zricks.com





