



THE WORLD IS DEFINITELY GETTING SMALLER.

unitech® 
HABIAT
GREATER NOIDA

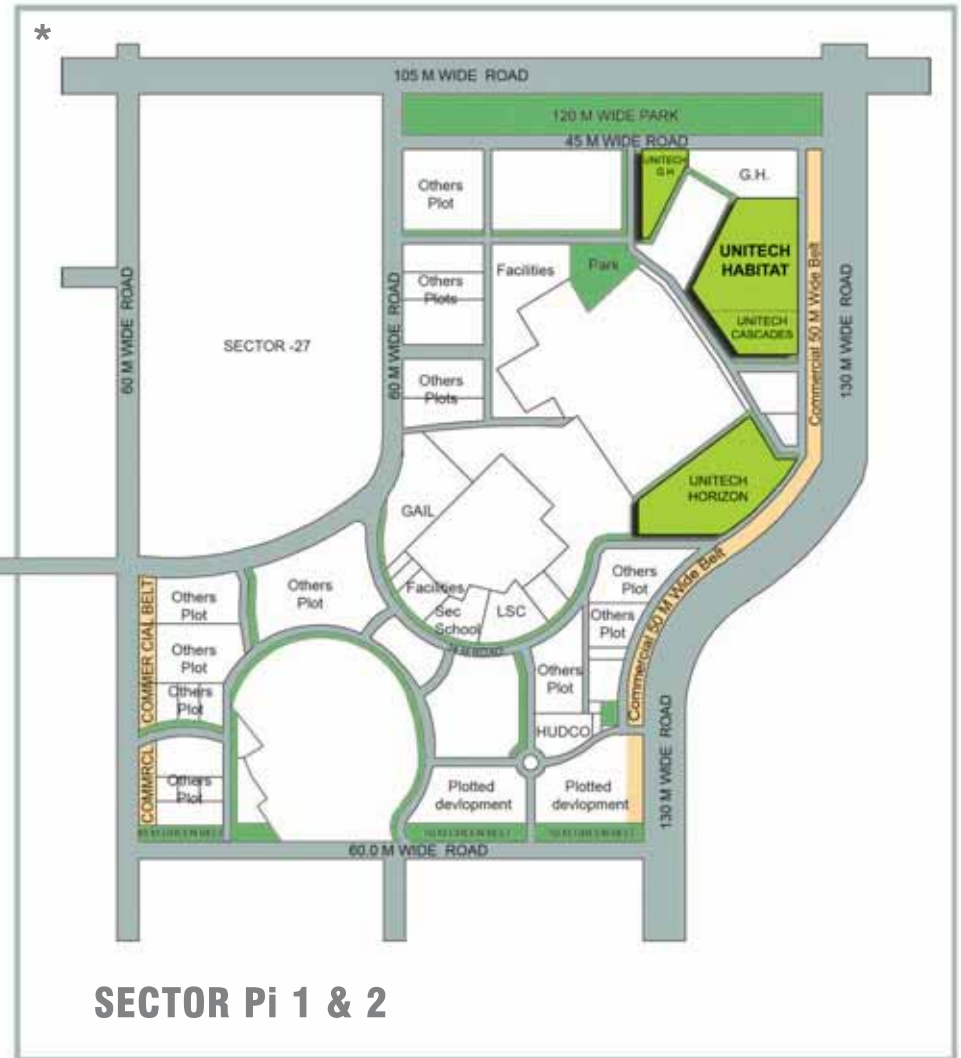


**ONE STEP AND ANY BOUNDARY BLURS
WITH ANOTHER STEP YOU'RE READY TO SPLURGE
LUSH LANDSCAPES ARE AROUND JOYS SHOW UP AT EVERY STEP
ONLY NOW THE STEPS HAVE BEGUN TO GROW BETWEEN YOU AND A MILLION OTHERS**

AS WE SPEAK, UNITECH IS TURNING MANY A BARREN LAND INTO A LANDMARK. THE FINEST IN REAL ESTATE DESIGN AND CONSTRUCTION, UNITECH IS ALSO THE LEADING DEVELOPER AND BUILDER IN THE COUNTRY. RANKED AMONG THE TOP 50 REAL ESTATE COMPANIES IN THE WORLD, IT IS THE ONLY WINNER OF THE ISO 9001:2000 CERTIFICATION IN NORTH INDIA. AS IT CELEBRATES THE ASTOUNDING SUCCESS OF UNITECH HEIGHTS, UNITECH HORIZON AND UNITECH CASCADES IN GREATER NOIDA, UNITECH HABITAT DOES NOT COME AS A SURPRISE.

HABITAT IS A NATURAL CHOICE FOR PERFECTIONISTS. THEY HAVE AN EYE FOR DETAIL AND SO DOES THIS 23 ACRE HAVEN. YOU'LL FIND 2-3 BEDROOM APARTMENTS, DUPLEXES AND PENTHOUSES WITH DESIGN IN EVERY ROOM AND A FULLY FITTED KITCHEN. WHERE 24X7 SECURITY, RETAIL LUXURY AND EVERYTHING YOU'LL EVER NEED IS JUST AROUND THE CORNER.

LOCATION MAP



*The Part of the map within the box has been magnified. Map is not to scale.





DAY VIEW OF UNITECH HABITAT



AERIAL VIEW OF UNITECH HABITAT

480 STEPS TO THE SHOPPING CENTRE





CLUB AT UNITECH HABITAT



NIGHT VIEW OF CLUB AT UNITECH HABITAT

135 STEPS TO THE POOL



67 STEPS TO THE PLAYGROUND



LANDSCAPE PLAN



- A MAIN ENTRANCE
- B ENTRANCE PIAZZA
- C CLUB
- D SWIMMING POOL
- E KIDS POOL
- F EVENT SPACE
- G PICNIC GARDEN
- H OPEN AIR THEATRE
- J CHILDRENS PLAY + KICK ABOUT AREA
- K FEATURE LAWN AREA
- L LINEAR GARDEN PIAZZA
- M FEATURE PIAZZA
- N EXERCISE GARDEN AREA
- P PRIVATE GARDENS
- Q PATHWAY
- R OUTDOOR GAMES COURTS
- S SERVICE AREA
- T SERVICE ENTRY

Tower 13 & Floor 13 are not included in this project.



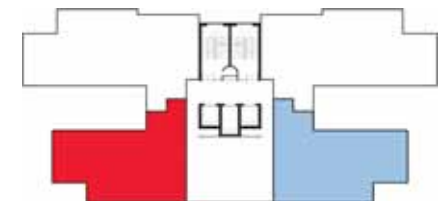
Type 3A-Duplex

(Lower Level) (3B 3T 1L 1S)



3170 sq.ft. (294.6 sq.mt)

- T1 G01, G04
- T3 G01, G04
- T4 G01, G04
- T6 G01, G04
- T8 G01, G04
- T10 G01, G04
- T11 G01, G04
- T14 G01, G04
- T15 G01, G04
- T17 G01, G04
- T18 G01, G04



Type 3A-Duplex (Upper Level)



Type 3A-Penthouse

(Lower Level) (3B 3T 1L 1S)



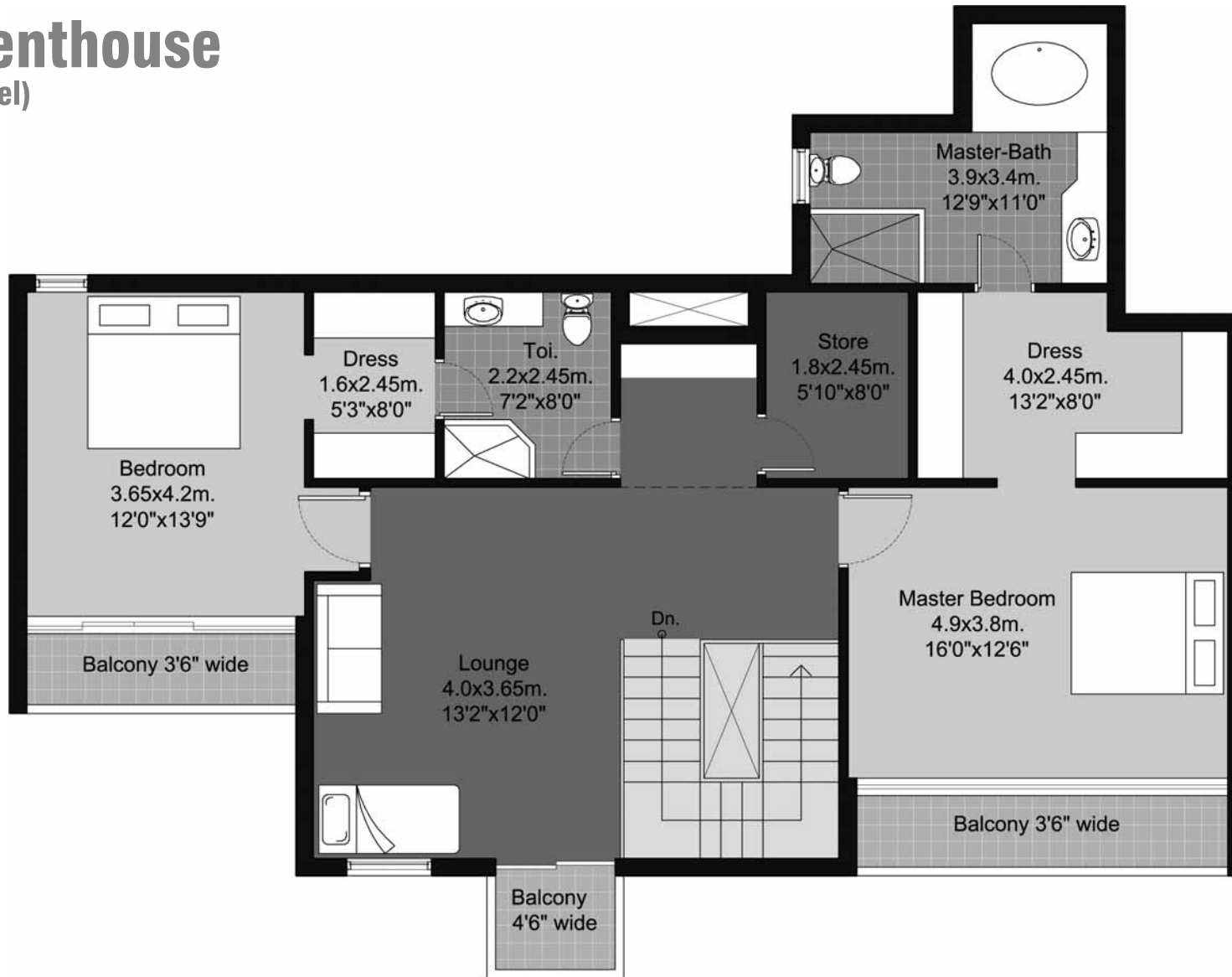
3491sq.ft. (324.4 sq.mt)
 Terr Area: 243 sq.ft.(22.6 sq.mt)

T11 1101
 T15 1201



Type 3A-Penthouse

(Upper Level)



Type 3A-Typical

(3B 3T 1S)



2096 sq.ft. (194.8 sq.mt)

- T1 201-1401, 204-1204
- T3 201-1101, 204-1204
- T4 201-1201, 204-1104
- T6 201-1201, 204-1404
- T8 201-1101, 204-1204
- T10 201-1101, 204-1104
- T11 201-1001, 204-1204
- T14 201-1401, 204-1204
- T15 201-1101, 204-1204
- T17 201-1201, 204-1104
- T18 201-1001, 204-1204



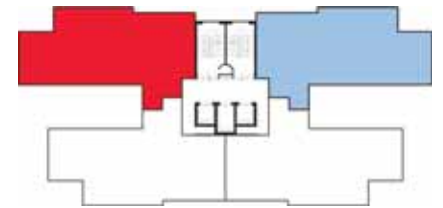
Type 3B-Typical

(3B 3T 1S)



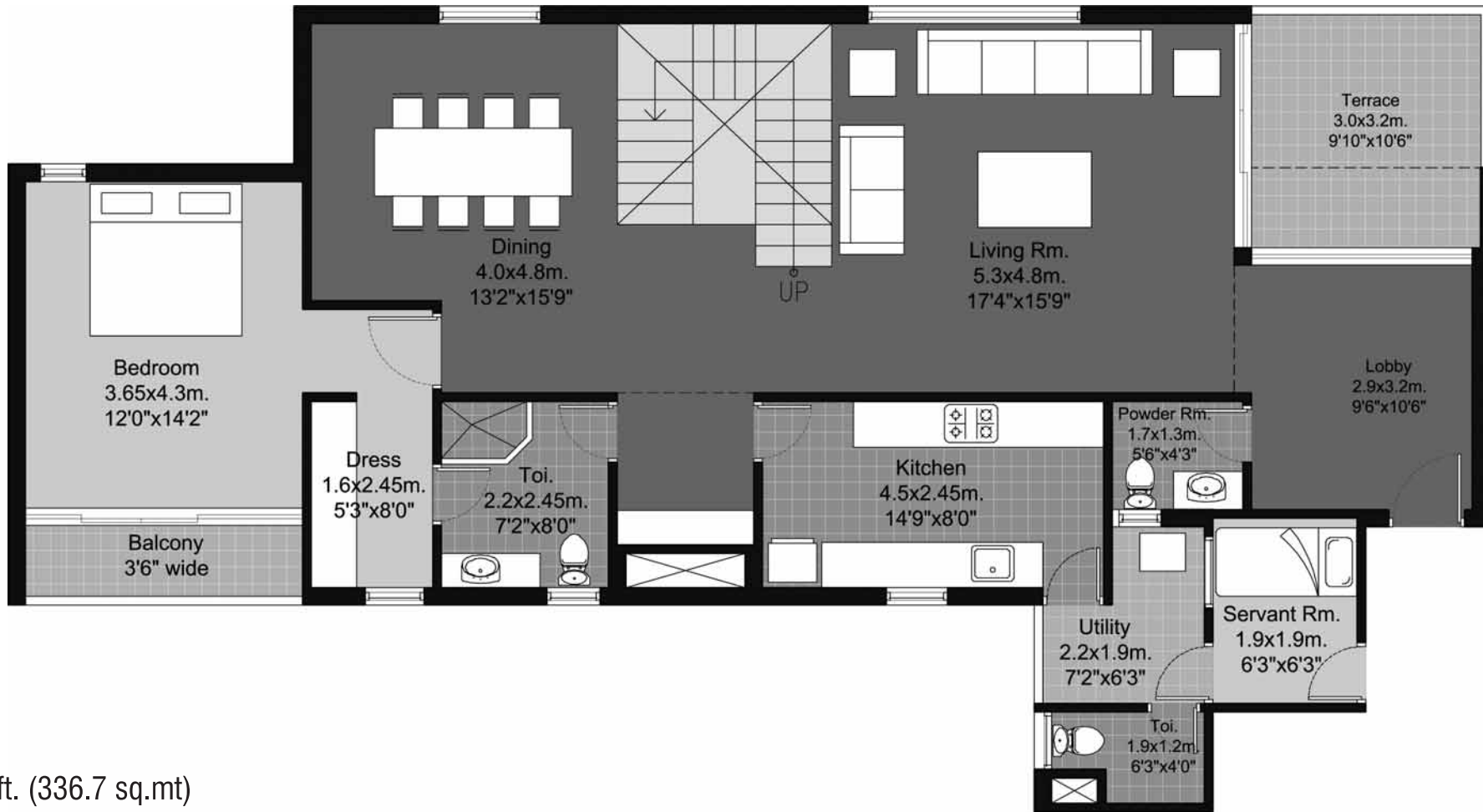
2098 sq.ft. (195.0 sq.mt)

- T1 G02-1202, G03-1103
- T3 G02-1102, G03-1403
- T4 G02-1402, G03-1403
- T6 G02-1402, G03-1003
- T8 G02-802, G03-1203
- T10 G02-1202, G03-1203
- T11 G02-1402, G03-1403
- T14 G02-1202, G03-1103
- T15 G02-1202, G03-1403
- T17 G02-1202, G03-803
- T18 G02-1162, G03-1203



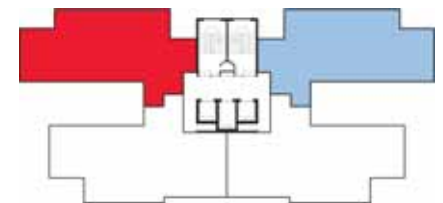
Type 3B-Penthouse

(Lower Level) (3B 3T 1L 1S)



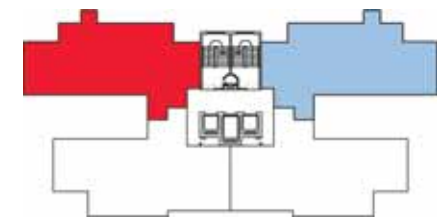
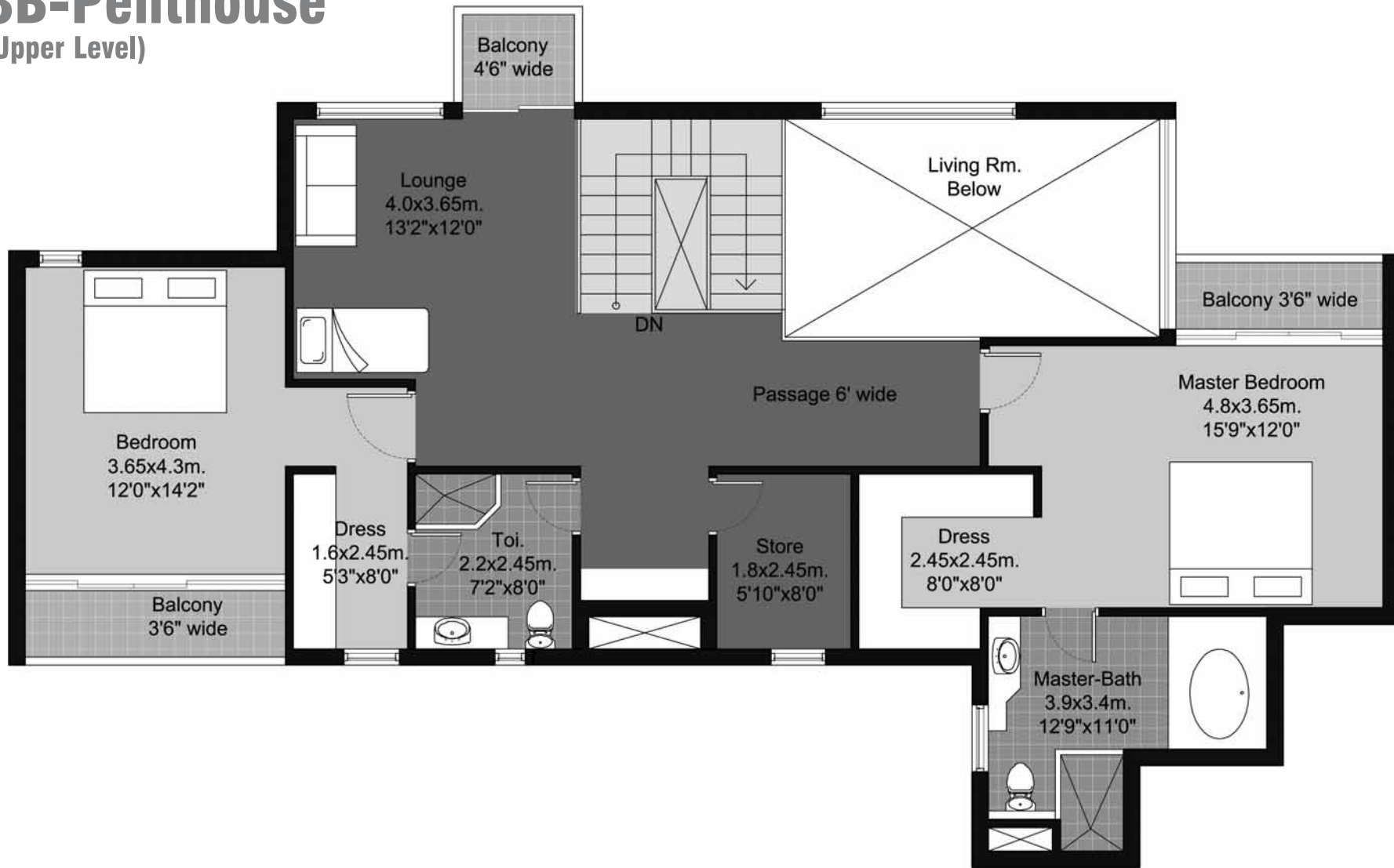
3623 sq.ft. (336.7 sq.mt)
 Terr Area: 108 sq.ft.(10 sq.mt)

T1	1203
T3	1202
T6	1103
T8	902
T14	1203
T17	903



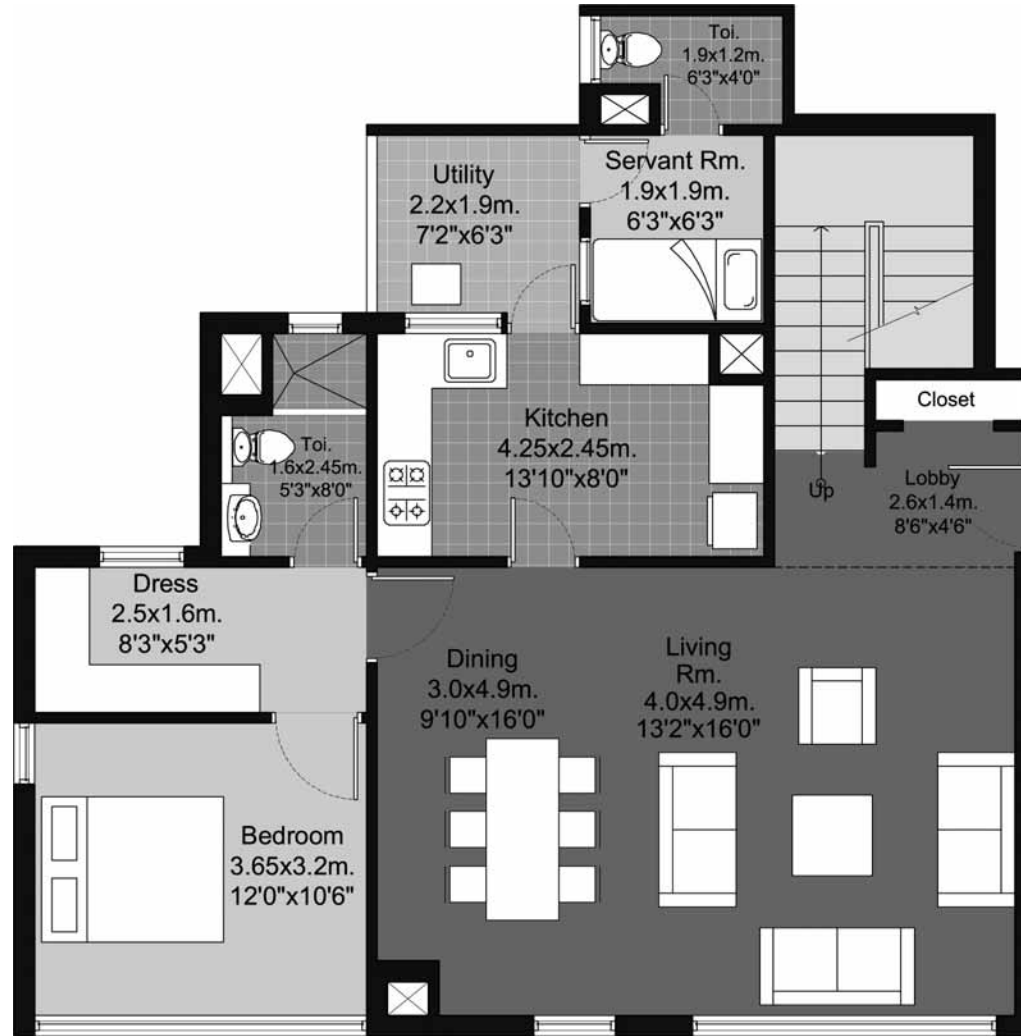
Type 3B-Penthouse

(Upper Level)



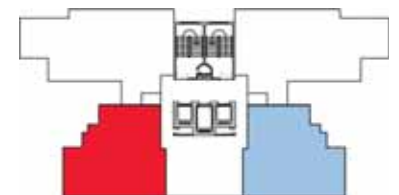
Type 2A-Duplex

(Lower Level) (3B 3T 1S)



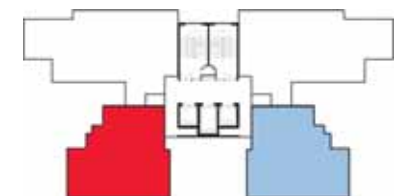
Area: 2612sq.ft. (242.7 sq.mt)

T2	G01, G04
T5	G01, G04
T7	G01, G04
T9	G01, G04
T12	G01, G04
T16	G01, G04
T19	G01, G04



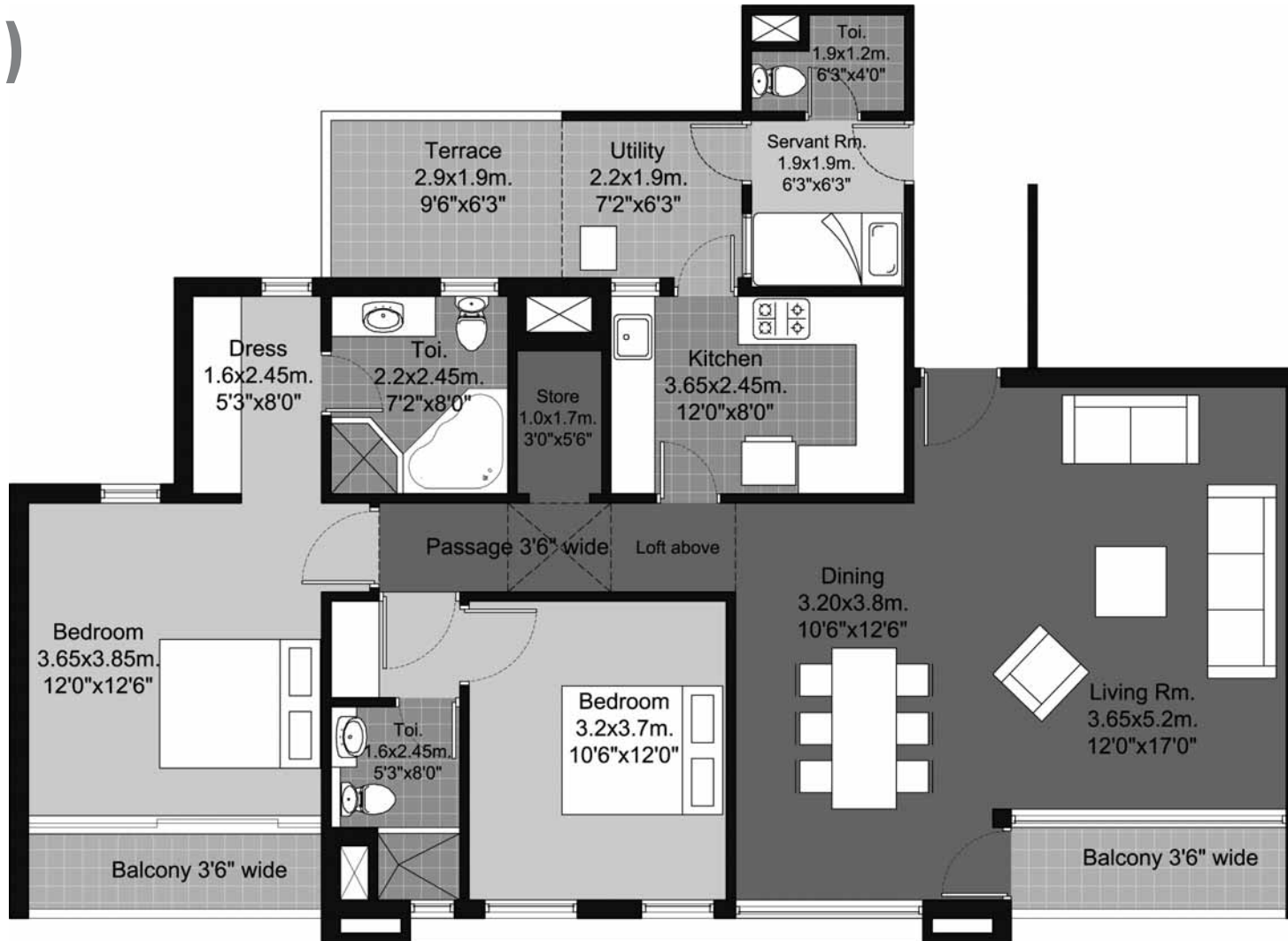
Type 2A-Duplex

(Upper Level)



Type 2A-(II)

(2B 2T 1S)



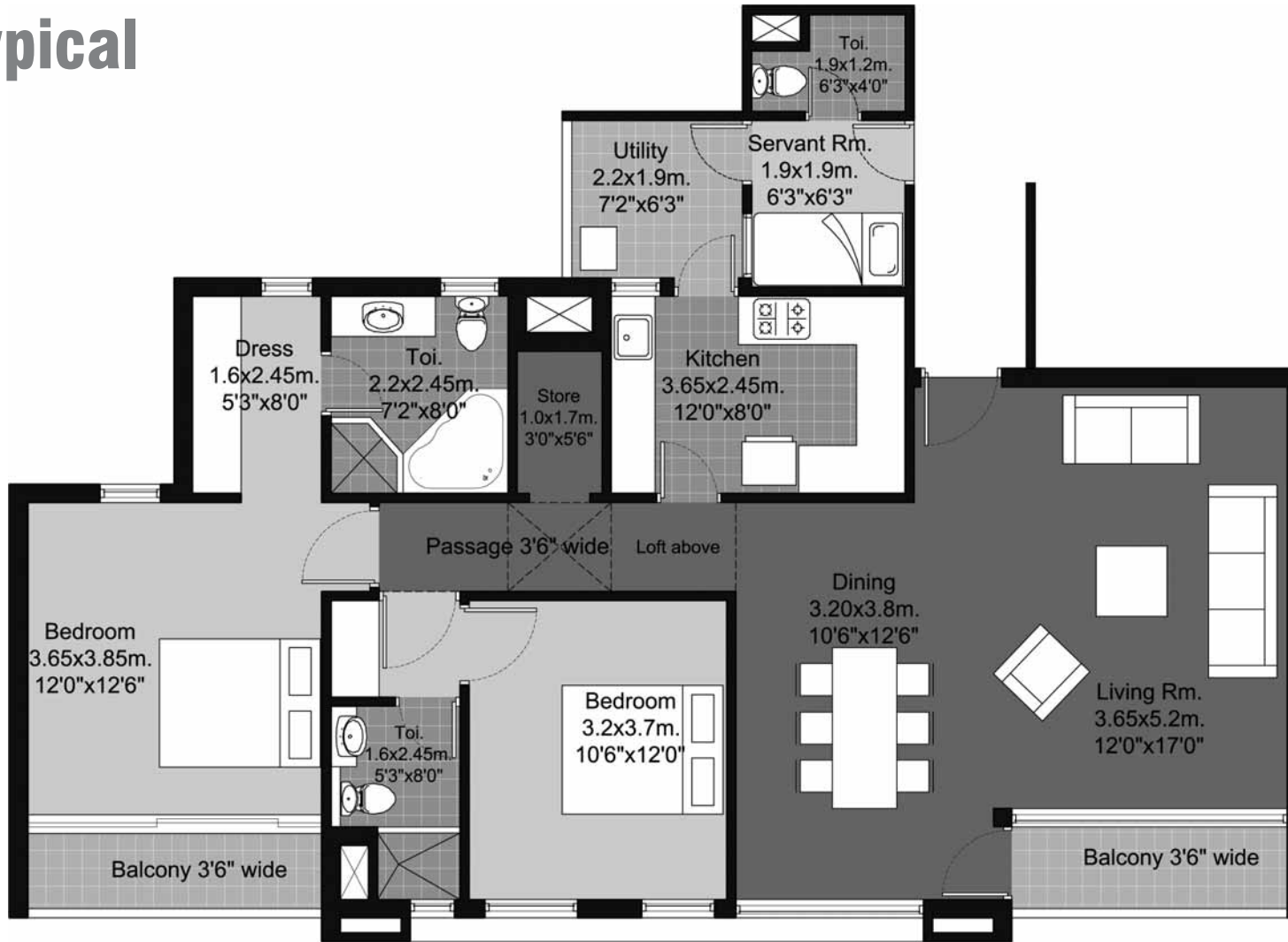
1693 sq.ft. (157.3 sq.mt)
 Terr Area: 67 sq.ft. (6.2 sq.mt.)

T2	201, 204
T5	201, 204
T7	201, 204
T9	201, 204
T12	201, 204
T16	201, 204
T19	201, 204



Type 2A-Typical

(2B 2T 1S)



1693 sq.ft. (157.3 sq.mt)

- T2 301-1401, 304-1404
- T5 301-1401, 304-1404
- T7 301-1401, 304-1404
- T9 301-1201, 304-1204
- T12 301-1401, 304-1404
- T16 301-1401, 304-1404
- T19 301-1401, 304-1404



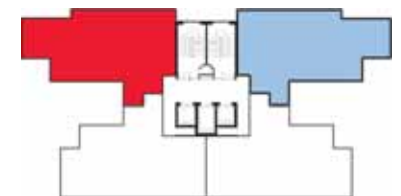
Type 2B-Typical

(2B 2T 1S)



1730 sq.ft. (160.8 sq.mt)

- T2 G02-1202, G03-1203
- T5 G02-1202, G03-1203
- T7 G02-1202, G03-1203
- T9 G02-1102, G03-1003
- T12 G02-1202, G03-1203
- T16 G02-1202, G03-1203
- T19 G02-1202, G03-1203



175 STEPS TO THE GYM



SPECIFICATIONS

WALL FINISH

INTERNAL: LIVING/DINING: CHOICE OF SHADES OF ACRYLIC EMULSION PAINT/CELLING IN DISTEMPER

EXTERNAL: COMBINATION OF STONE & TEXTURED PAINT

SERVANT ROOM: PAINTED IN OIL BOUND DISTEMPER

FLOORINGS

LIVING/DINING: IMPORTED MARBLE

BEDROOMS: LAMINATED WOOD FLOORING

SERVANT ROOM: CERAMIC TILES

KITCHEN

FULLY FITTED MODULAR KITCHEN WITH REFRIGERATOR, OVEN, HOB AND CHIMNEY

FLOORING: CERAMIC TILES

DADO: CERAMIC TILES ABOVE COUNTER/ON NON-COUNTER WALLS UPTO 1500mm ABOVE FLOOR

PLATFORM: GRANITE COUNTER WITH TWIN BOWL STAINLESS STEEL SINK/ DRAIN BOARD WITH CP FITTINGS

TOILETS

FLOORING: CERAMIC TILES

DADO: SELECT CERAMIC TILES UPTO CEILING

GRANITE/MARBLE COUNTER, COLOURED/WHITE CERAMIC FIXTURES AND SINGLE LEVER CP FITTINGS, GEYSERS.

JACUZZI IN MASTER BEDROOM, SHOWER STALL IN OTHER TOILETS

DOORS

SEASONED HARDWOOD FRAMES WITH EUROPEAN STYLE MOULDED SHUTTERS

WINDOWS

POWDER COATED/ ANODISED ALUMINUM

POWER BACKUP

100%

ELECTRICAL

COPPER WIRING AND MCBS

SECURITY

DOOR PHONES

FACILITIES

• 100% POWER BACK UP

• 24 X 7 SECURITY

GREEN AREA

• CHILDREN'S PARK

• EVENT LAWN

• OPEN AIR THEATRE

• PICNIC GARDEN

• KICK-ABOUT AREA

• EXERCISE GARDEN

• OUTDOOR GAMES COURTS

BUILDING

• SUFFICIENT CAR PARKING FACILITY PER APARTMENT

• EARTHQUAKE RESISTANT RCC FRAMED CONSTRUCTION

CLUB

• 2 SWIMMING POOLS

• KIDS POOL

• GYMNASIUM

• SQUASH COURT

• INDOOR GAMES ROOM

• KIDS ROOM

• MULTIPURPOSE HALL



FOR MORE INFORMATION, CONTACT:

SALES OFFICE (NOIDA): UNITECH LIMITED, P - 7, SECTOR - 18, NOIDA - 201 301, UTTAR PRADESH, INDIA. TEL: +91 120 251 3780. FAX: +91 120 434 8906.

SALES OFFICE (DELHI): 6, COMMUNITY CENTRE, SAKET, NEW DELHI-17, INDIA. TEL: +91 11 4166 4040. FAX: +91 11 2685 7338.

MKTG. OFFICE: UNITECH LIMITED, UNITECH SIGNATURE TOWERS, GROUND FLOOR, SOUTH CITY - I, NH-8, GURGAON-1, HARYANA, INDIA. TEL: +91 124 408 2020. FAX: +91 124 408 3355.

EMAIL: habitat@unitechgroup.com www.unitechgroup.com