



wildflower
COUNTRY





wildflower
COUNTRY

Let the morning mist unearth mystic nature

Welcome to 100 acres of tre at Wildflower Country - a sprawling leafy self contained township. Share the best things in life with your loved ones. The township offers world class amenities for the modern aficionados.

Come and rediscover blissful living.

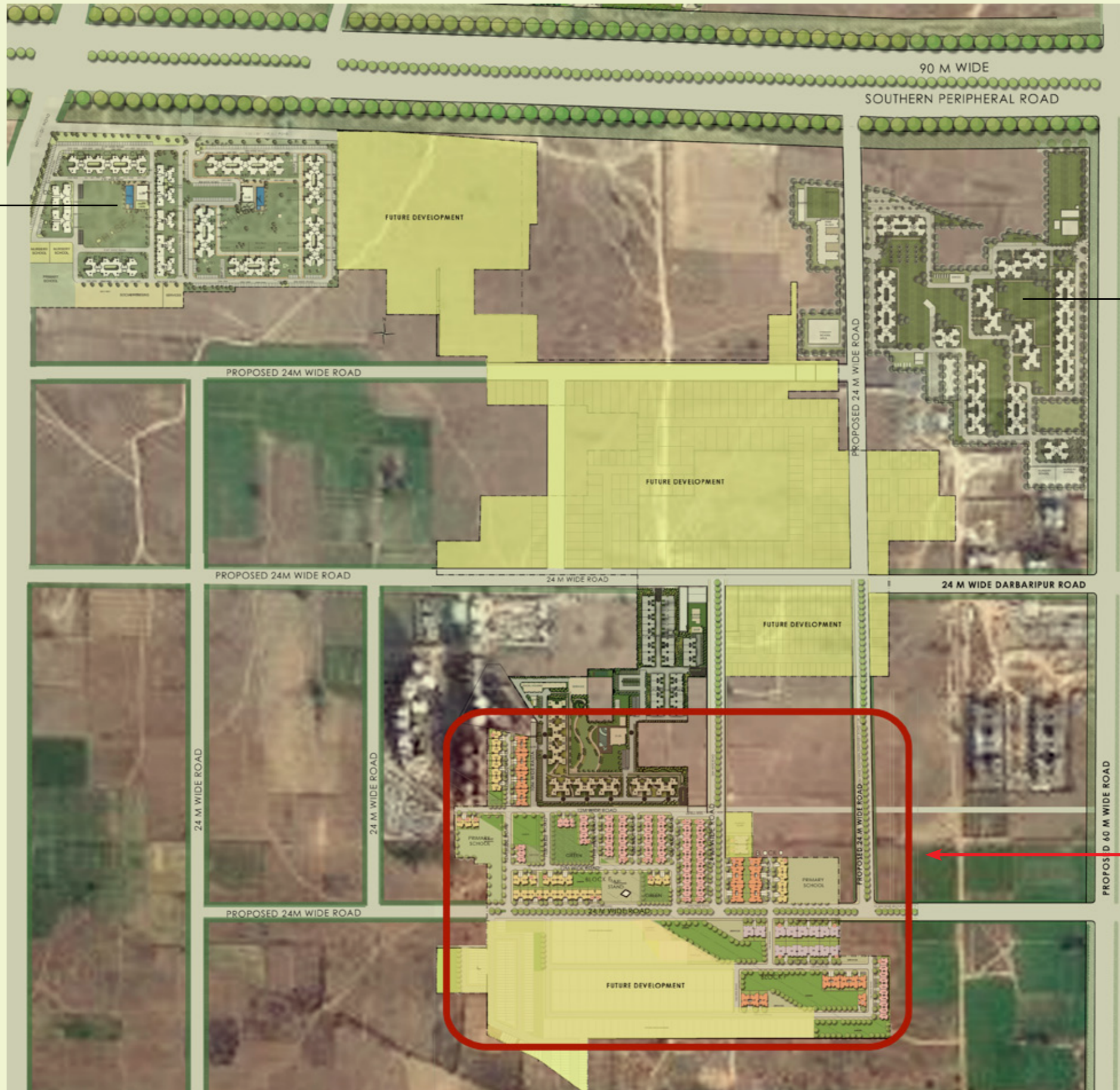


Location Map

- Adjacent to 90 m wide Southern Periphery Road, just 3.5 kms from NH-8
- 2 kms from occupied residential areas, offices & shopping malls on Sohna road & Golf Course Extension road
- Within 15 mins. drive are leading schools such as DPS, The Heritage, Shikshantar, GD Goenka & Pathways
- Within 15 mins. drive are leading hospitals such as Medicity, Artemis, Max, Fortis & Paras



Master Plan





anthea
FLOORS



Evening view



160 sqm. (191 sq. yd.) floors



This is an artist's rendition and may undergo modifications.



Key Plan



Features

Social Infrastructure

Nursery & primary school
Nursing home(s) & clinic
Shopping areas including daily needs store
Bank / ATM
Provision for public transport areas such as taxi stand

Landscape / sports

Themed garden / Amphitheatre / Gazebo
Yoga garden
Kids' play area
Jogging / Cycling track
Squash court
Open lawn tennis courts
Badminton courts
Half Basketball court

Ecological commitments

Sewage treatment
Rain water harvesting
Solar energy for limited areas

Security

Automatic boom barriers at main entry / exit gates to the township
CCTV surveillance of main entrance & exit gates
Audio communication from guard unit to every house



Club

Swimming pool

Kid's splash pool

Changing rooms

Unisex gymnasium

Multipurpose hall

Party lawn with barbeque counter and outdoor music

Pool side party area

Indoor games room with pool / billiards table & air hockey

TV lounge

Table tennis

Kitchenette



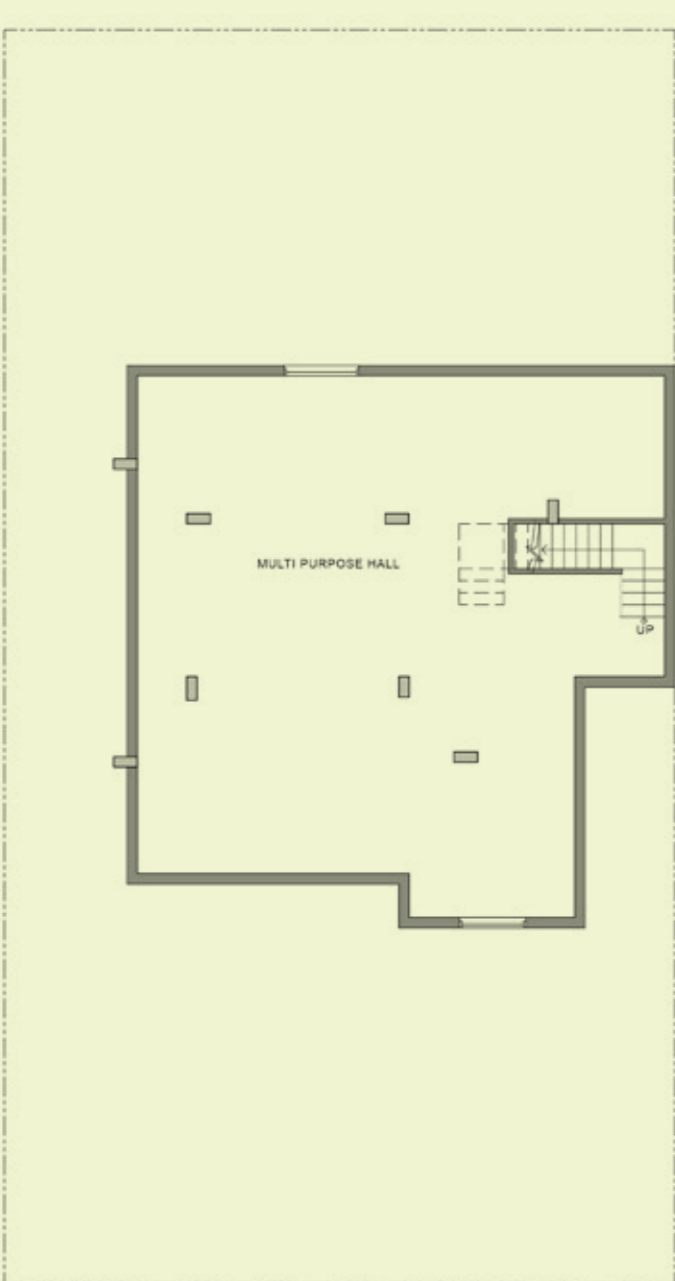
Specifications

	Internal	Acrylic Emulsion
Wall Finish	External	Combination of texture paint/ stone
	Servant Room / Study	OBD
Flooring	Living / Dining	Imported Marble
	Bed Rooms / Basement	Vitrified Tiles
	Stair Case	Marble
	Servant Room / Study	Vitrified Tiles
	Balconies	Anti-skid Tiles
Kitchen	Flooring	Anti-skid Tiles
	Dado	Ceramic tiles upto 600 mm above counter
	Counter	Granite counter with stainless steel sink, drain board with C.P. fittings
Toilets	Flooring	Anti-skid Tiles
	Dado	Select ceramic tiles upto ceiling height
	Fittings	EWC & wash basin in white colour, single lever CP fittings, granite counter, pipelines for geyser, Indian WC in domestic help toilet
Doors	Main Entry / Internal	Seasoned hardwood frames with European style moulded shutters
	External	Powder coated / anodized aluminium/ UPVC
Windows		Powder coated / anodized aluminum / UPVC
Electrical		Copper wiring in concealed conduits modular moulded switches and MCBs
Air-conditioning		Split AC units in all bedrooms & living/dining room
Power back-up		100% Power Backup
Communication		One telephone jack each in the living room and all bedrooms, intercom facility to each floor in the living room
Television		TV point in the living room and all bedrooms

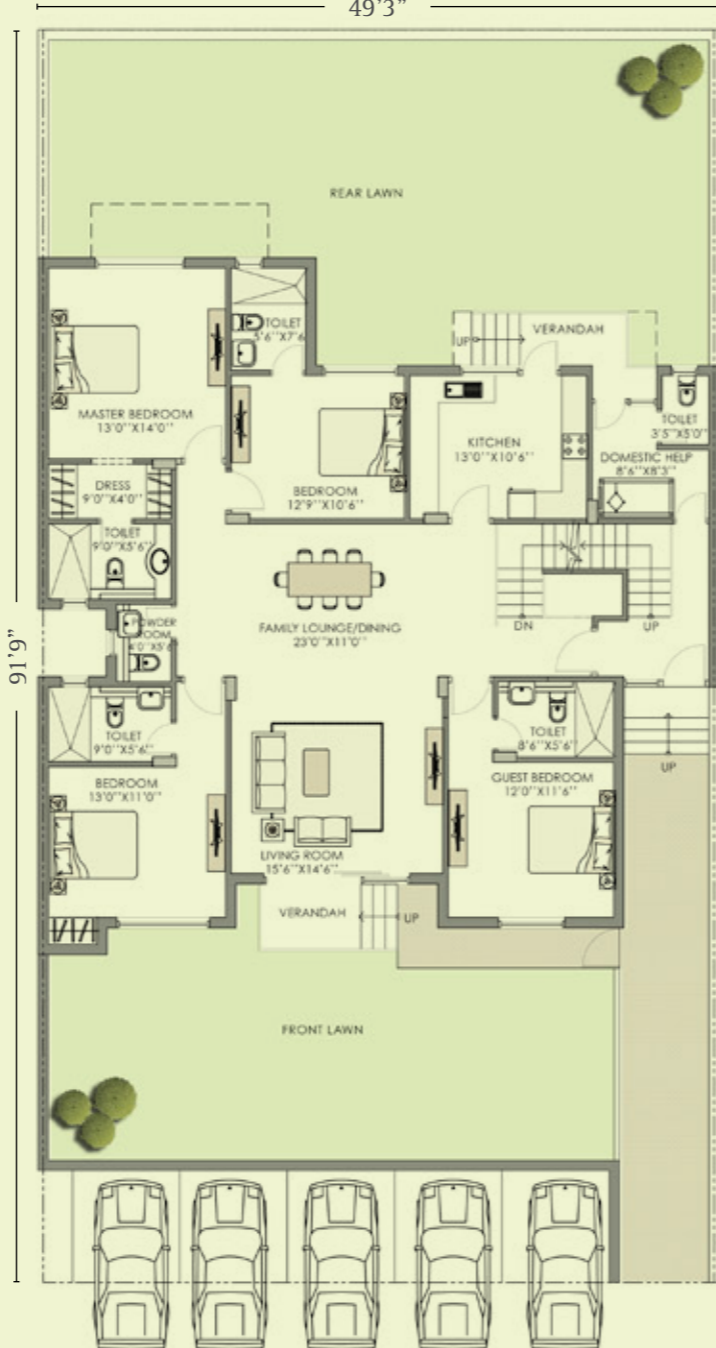


Floors plans

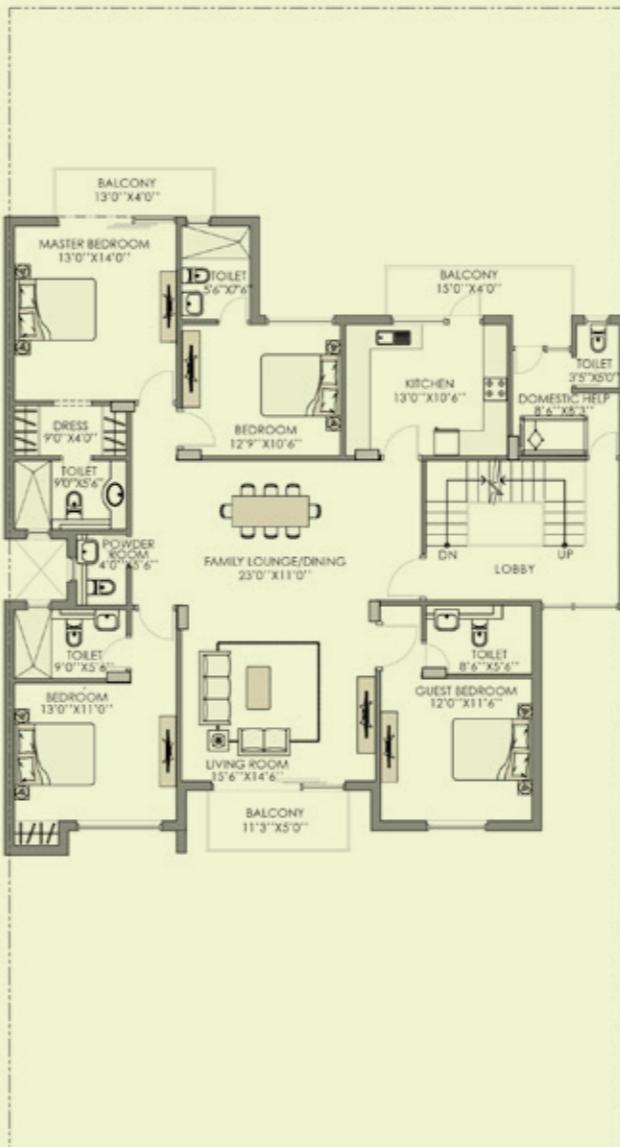
420 sqm. (502 sq. yd.)



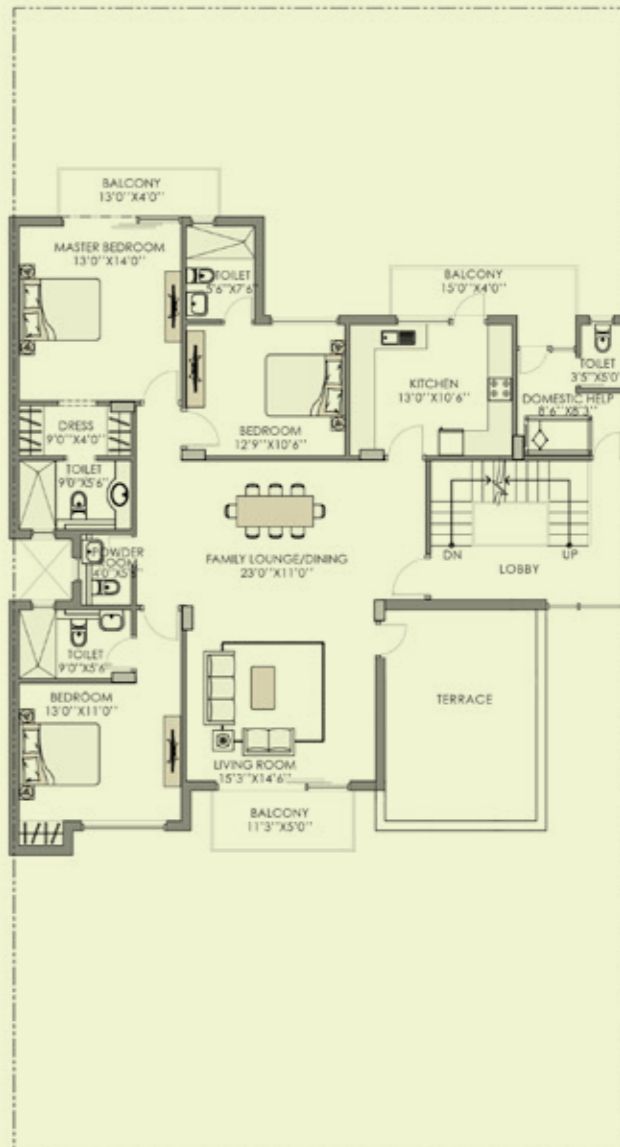
Basement
Area = 1478 sq. ft.



Ground Floor
Area = 2193 sq. ft.



First Floor
Area = 2259 sq. ft.

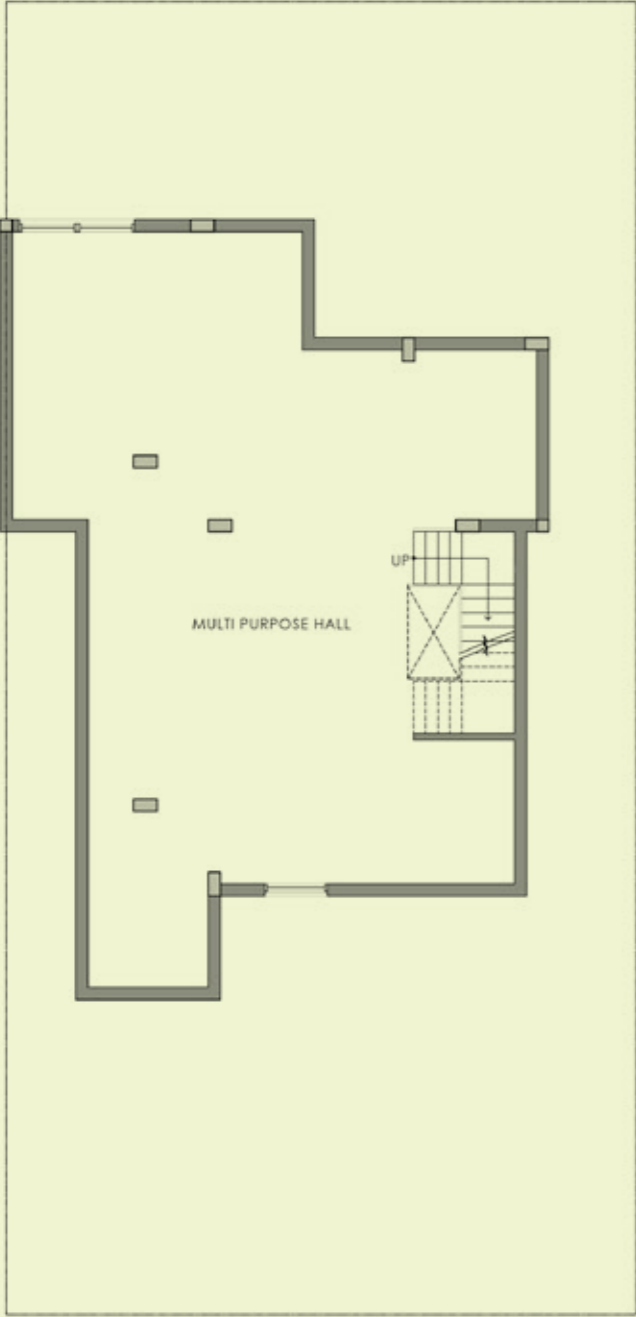


Second Floor
Area = 2028 sq. ft.
Terrace Area = 230 sq. ft.

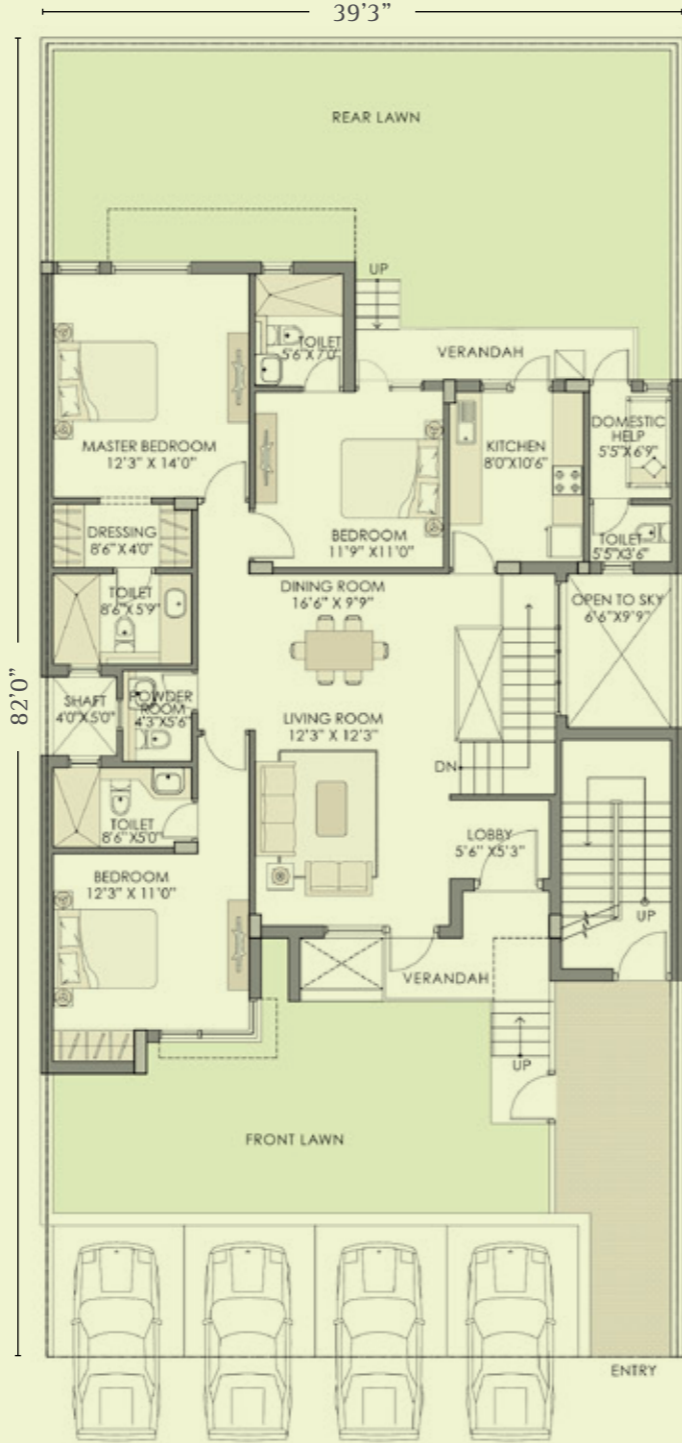


Floors plans

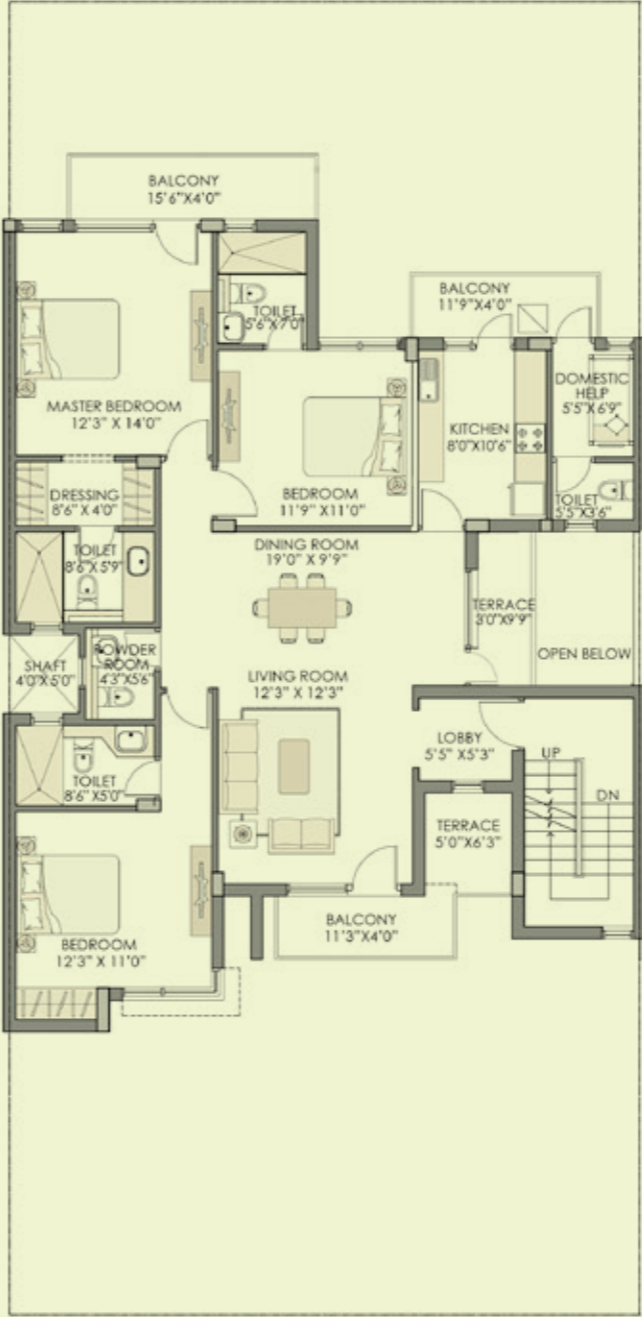
300 sqm. (359 sq. yd.)



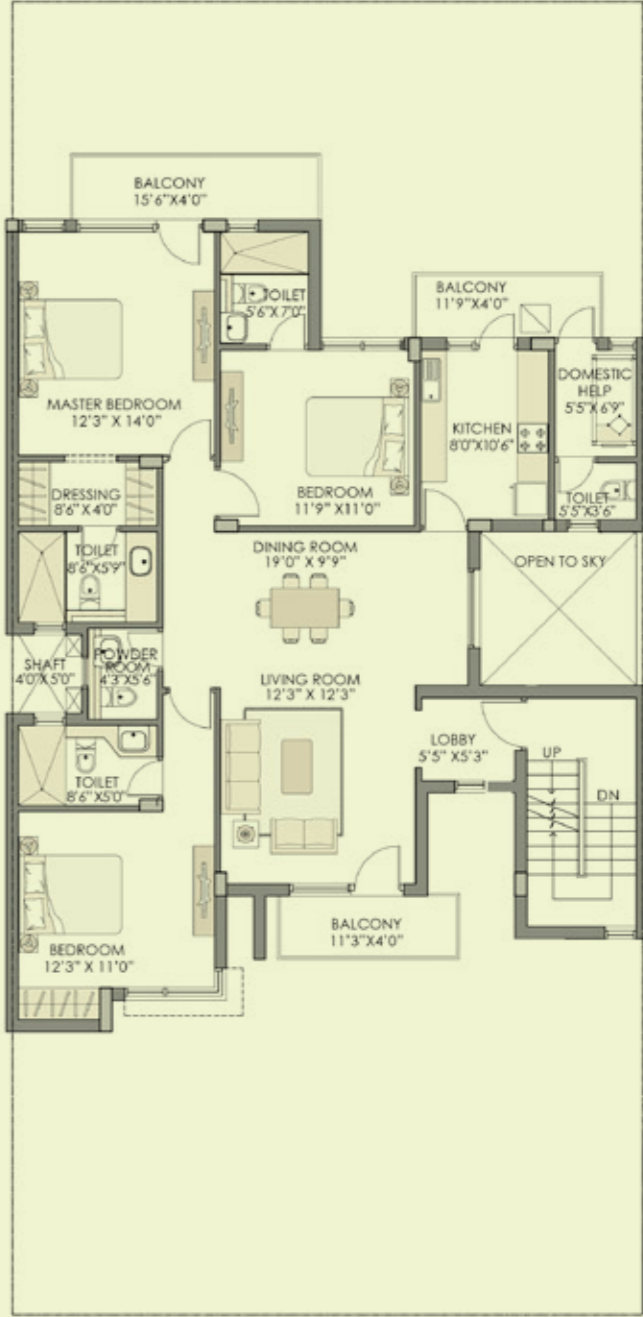
Basement
Area = 1252 sq. ft.



Ground Floor
Area = 1716 sq. ft.



First Floor
Area = 1685 sq. ft.
Terrace Area = 65 sq. ft.

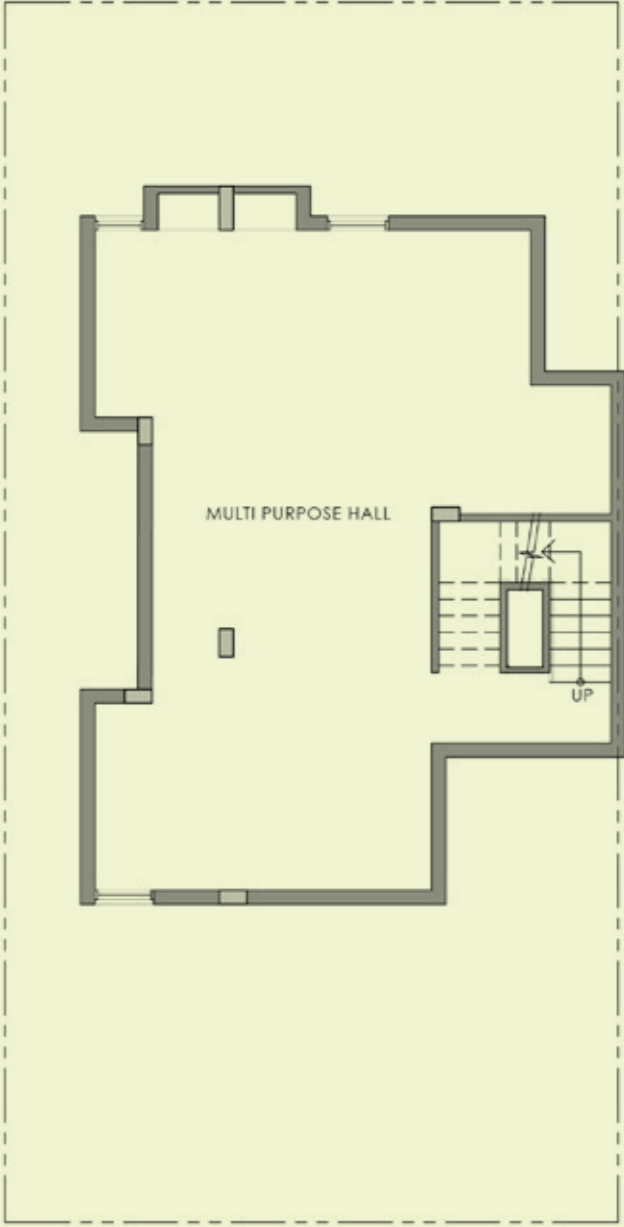


Second Floor
Area = 1685 sq. ft.

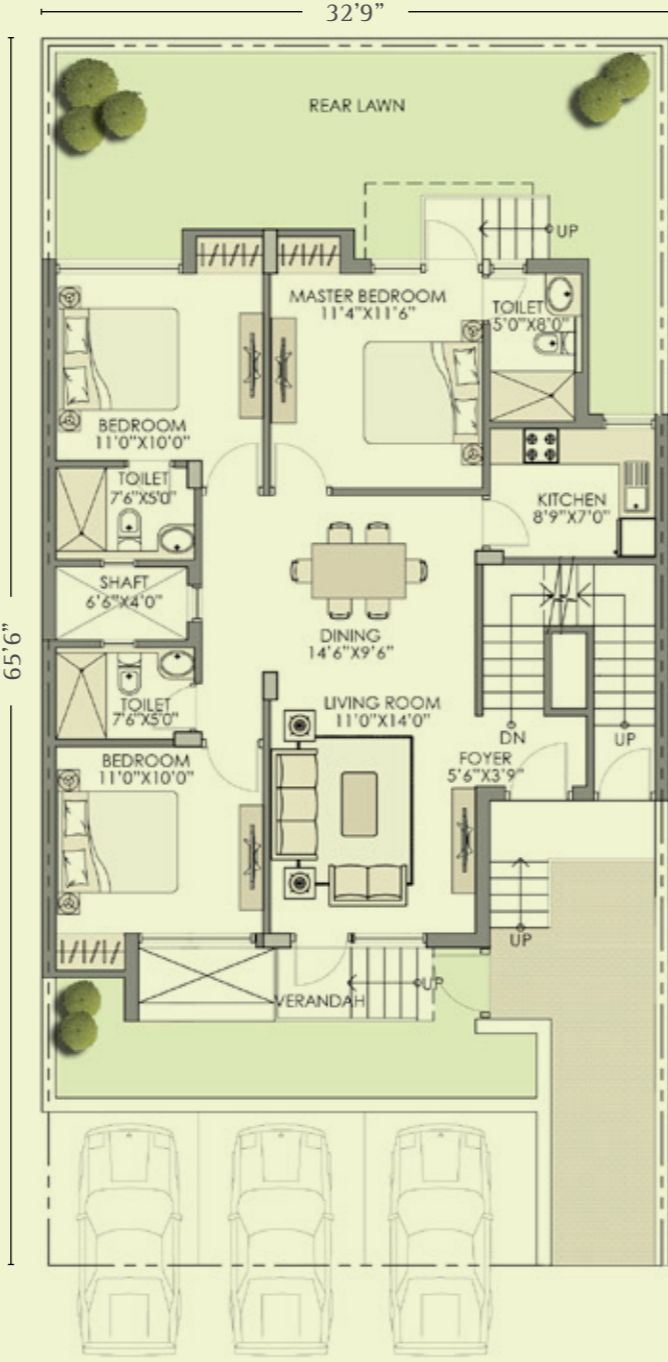


Floors plans

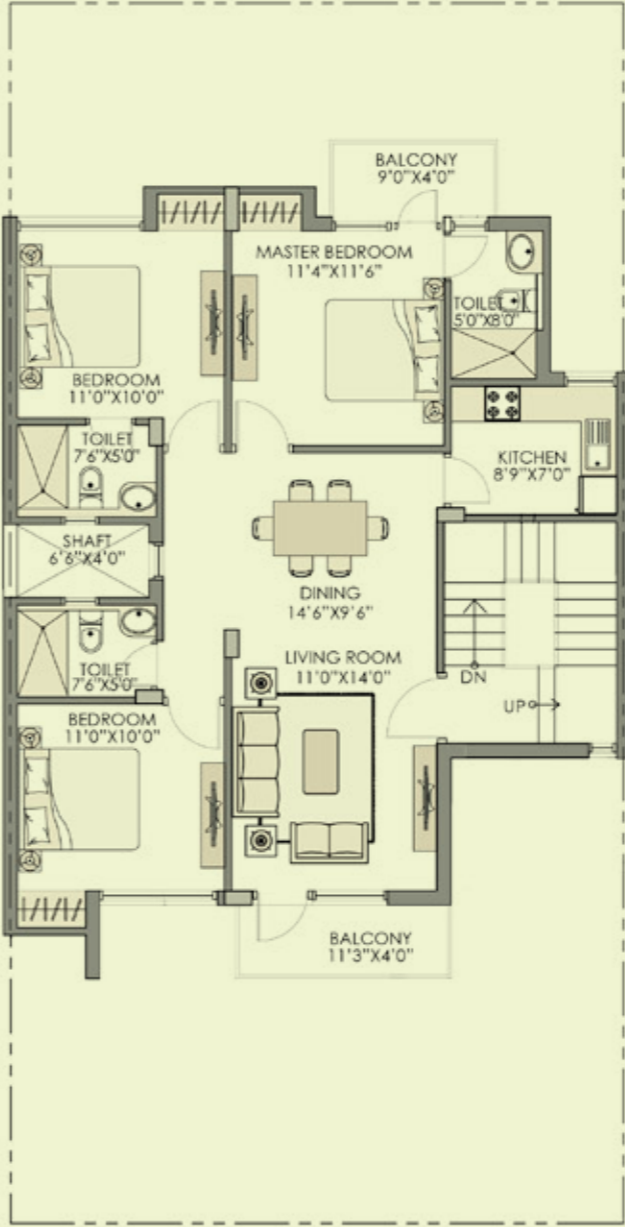
200 sqm. (239 sq. yd.)



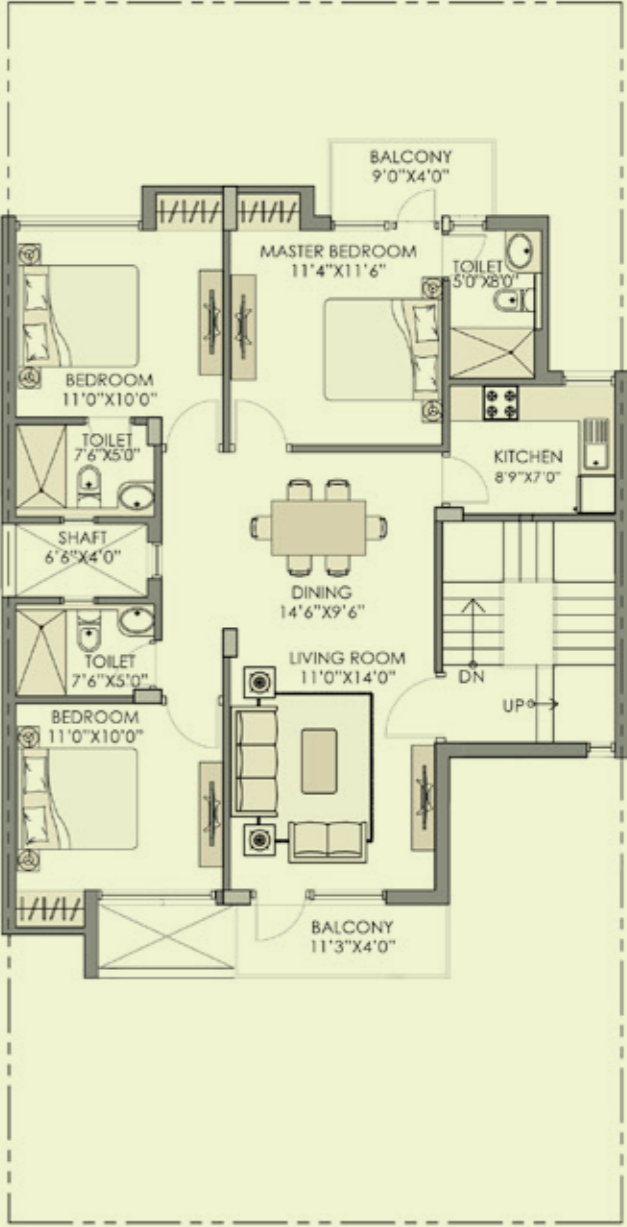
Basement
Area = 925 sq. ft.



Ground Floor
Area = 1236 sq. ft.



First Floor
Area = 1236 sq. ft.

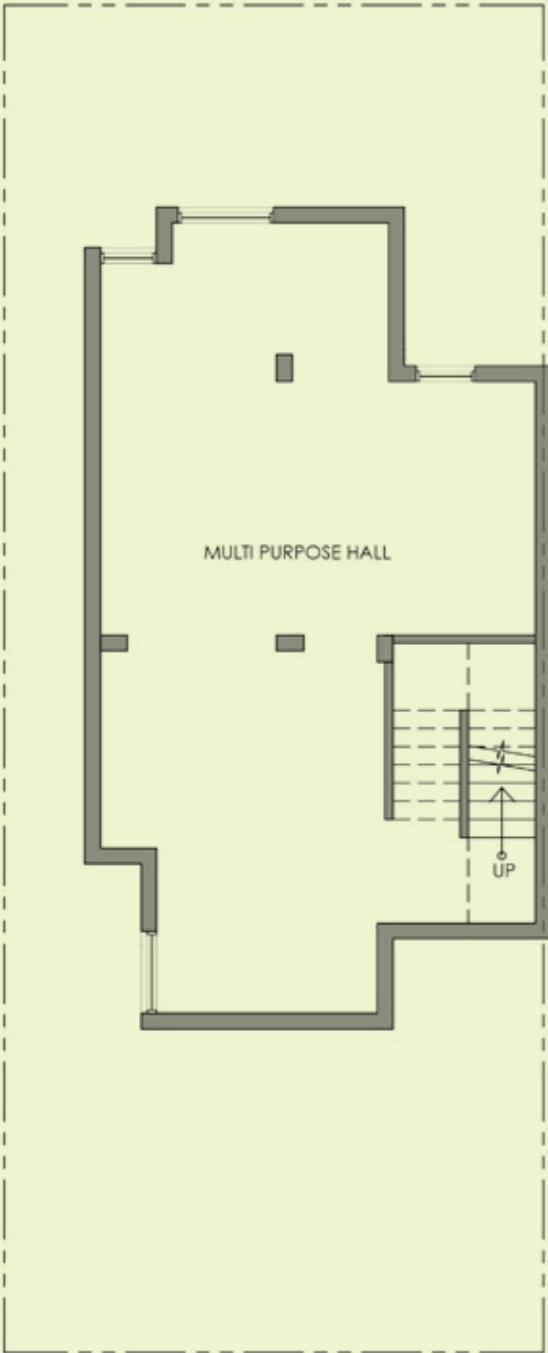


Second Floor
Area = 1236 sq. ft.

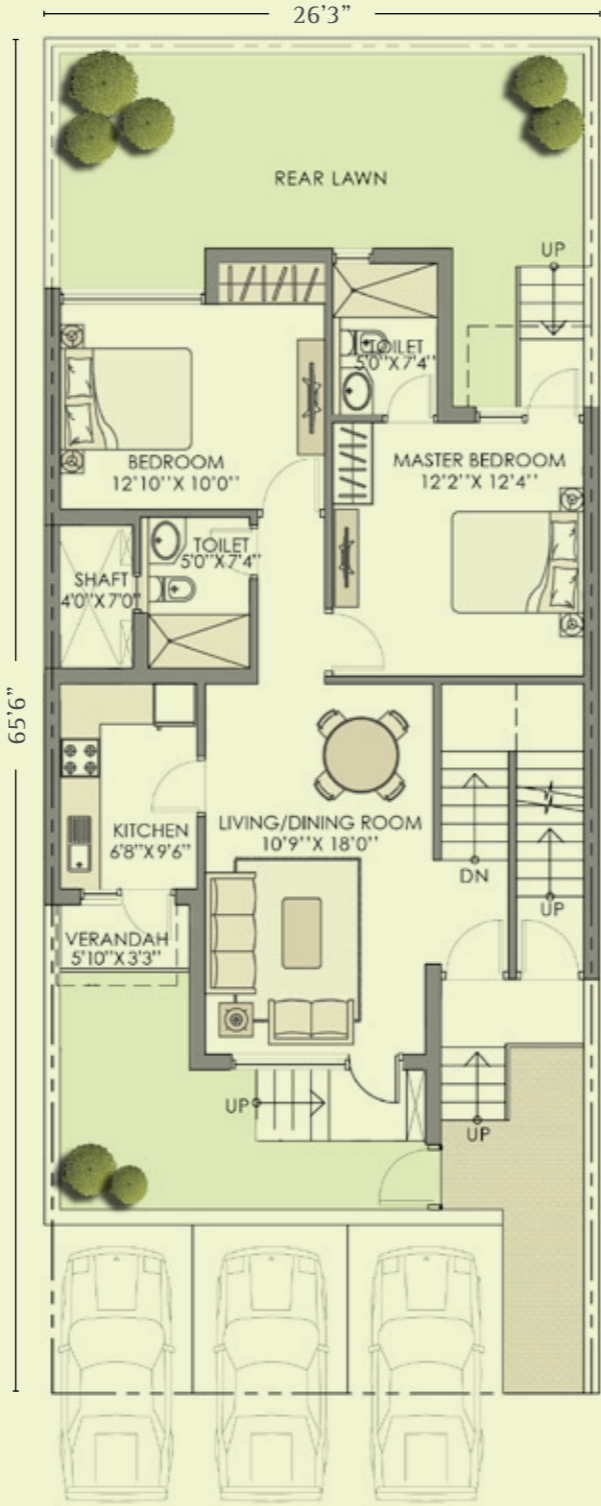


Floors plans

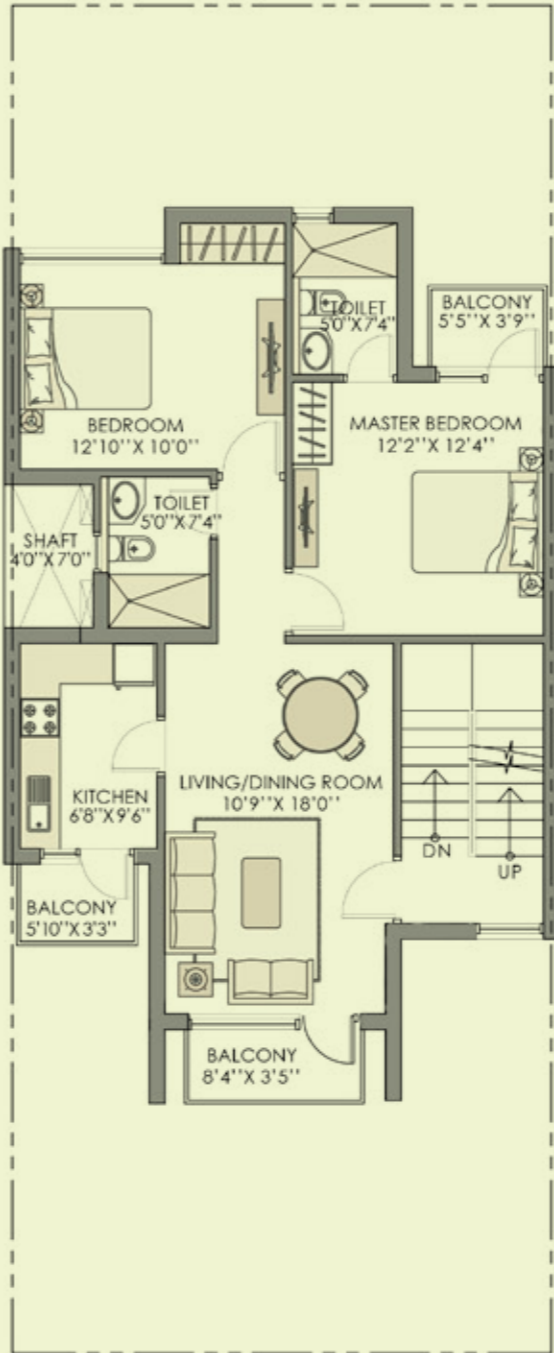
160 sqm. (191 sq. yd.)



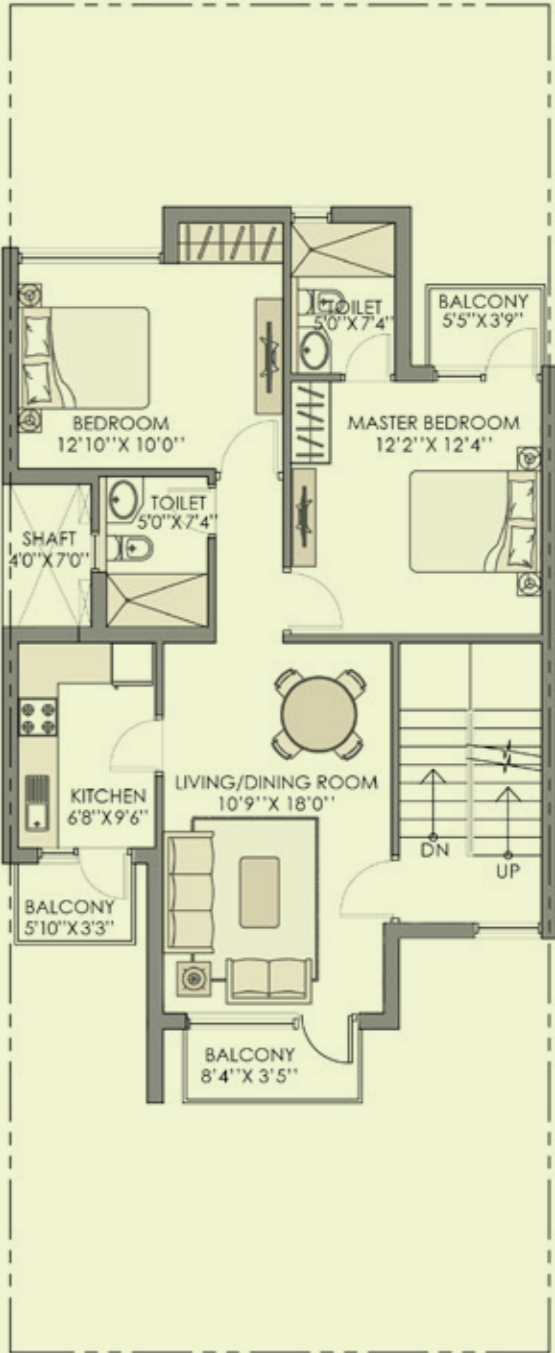
Basement
Area = 781 sq. ft.



Ground Floor
Area = 997 sq. ft.



First Floor
Area = 997 sq. ft.



Second Floor
Area = 997 sq. ft.

