



Green now means  
home to you



**Araville Address:** Sector 79, Gurgaon, Haryana.

**Araville Marketing Office:**  
Office No. 1102, Tower A, Signature Tower, Gurgaon

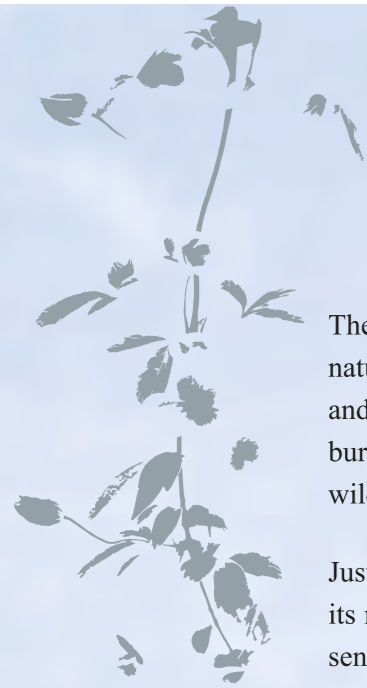
**Supertech Limited:** Supertech House, B 28-29,  
Sector 58, Noida-201301. Ph.: 0120-4669900

TOLL FREE: 1800 103 7676  
sms ARAVILLE to 56677

[www.araville.in](http://www.araville.in)  
[www.supertechlimited.com](http://www.supertechlimited.com)







The foothills have a way of drawing life in, ever since mankind can remember. The natural shade of the towering hillocks, the whistling winds that hit the mountain face and soothe the air, the balmy clouds cascading down as the rain and the rich soil that bursts opens its goodness – everything converges to idealize the existence of man, wildlife, flora and fauna.

Just like at the Aravallis, one of India's oldest mountain ranges that's home to life in all its natural splendor; green, wild, uninhibited, soothing to the eyes and serene to the senses. Not surprisingly, for urban dwellers who look for an escape into the greens, the Aravallis is a perfect getaway. And that getaway becomes even more special when it turns into a home. A haven one can come back to everyday, in the lap of the greens.

## Welcome to Araville!







# Green Sweet Green

With 10 acres of premium living on the lap of Aravallis, green now means home to you.



Araville, nestled next to the Aravallis in Sector 79 Gurgaon, is an ode to the mountain range and its lush glory. It is a concept that brings together the best of urban living with the joys of Nature. In fact, it's so close to the greens, that 'home' gets a whole new definition here. Much more than just concrete created from cold blue-prints, it alludes to the vibrancy and character of the greens.

A 10-acre premium residential development, Araville offers a range of 2/3/4 BHK apartments spread across green open environs. It overlooks the ancient mountain range facing a green belt that ensures unobstructed views for a lifetime.



*Large canopies of deciduous greens top the Aravalli range, which play a vital role in balancing the bio-diversity and climate of the region.*





## Feel at Green.

With lifelong views of the lush green Aravallis, green now means home to you.



At Araville, you are never away from the greens. Overlooking the green belt, life here is an amalgam of the many hues of the mountains. From sun-kissed mornings to the ochre rays of the setting sun, every day here is a visual delight. Wake up to thousands of exotic species of flora and fauna. Feast your senses with an undisturbed panoramic view of the undulating green belt. Lose yourself amidst landscaped gardens, man-made waterfalls and the tranquil beauty of the world's oldest mountain range.



*The song of the red-whiskered bulbul, commonly heard in the Aravallis, is said to be a harbinger of peace and prosperity.*





## Green is a space that defines identity.

With exquisite living options inspired from Nature, green now means home to you.



Araville houses premium 2/3/4 BHK apartments that set new benchmarks in finesse and functionality. Inspired from the verdant environs, each apartment is a sensible play of space to leverage the beauty of the Aravallis. Wide-open windows, thoughtful architecture, feature-rich interiors and amenities make room for homes that are beautiful, practical and nature-friendly.



*Growing wild in the folds of thick forests, over 70 different species of orchids can be found in the Aravallis, each with their own potent symbolism.*





## Small and big, find your joys at Green.

With an exclusive Clubhouse that symbolizes Nature's harmony, green now means home to you.



At Araville, green permeates in every aspect of your lifestyle - ensuring a well-balanced approach to your body and mind. There is a well-appointed Clubhouse with all modern amenities.

### Outdoor Club facilities :

- Tennis court • Badminton court • Swimming pool with kids pool • Kids play area • Jogging track

### Indoor Club facilities :

- Spa • Gym • Billiards / Snooker room • Card/multipurpose room • Restaurant/Bar • Outdoor dining facilities • Banquet Hall • Party Lawns



*The Aravallis is home to Sapindus laurifolius (Soap Nut, Reetha), a tree that has offered medicinal value to mankind for centuries.*





# Life is nurtured at Green.

Cushioned in the foothills at Sector 79 Gurgaon, green now means home to you.



Site Plan



*The spotted deer is the ubiquitous inhabitant of the Aravallis, making their home anywhere across the 300 km range of the mountains.*

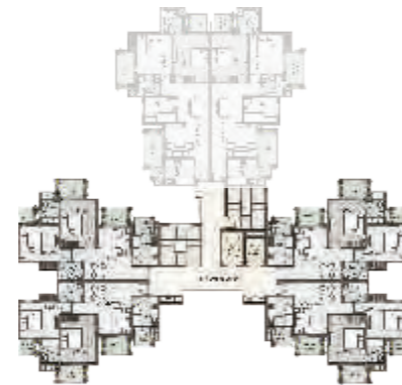
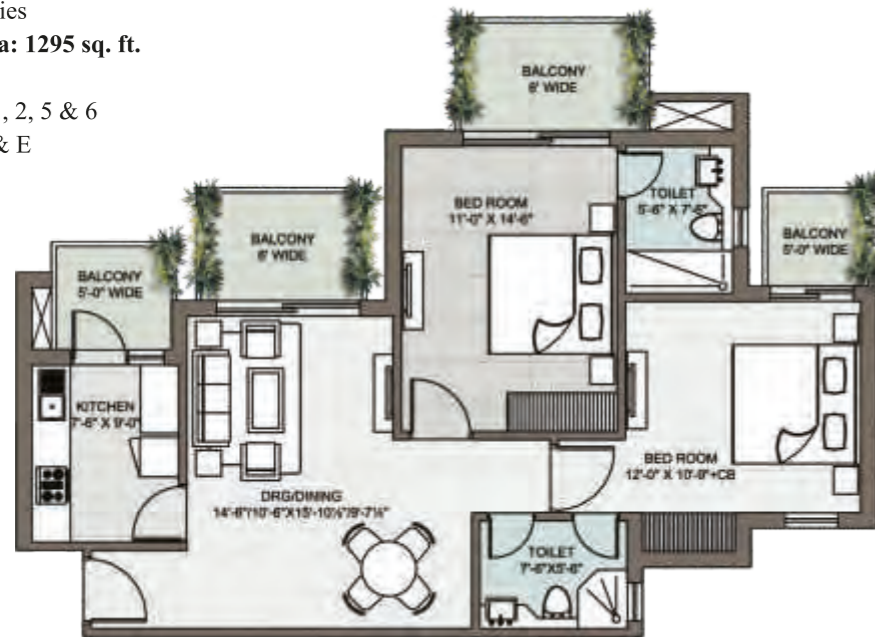




## Unit Plans

2 BHK  
 + 2 Toilets  
 + 4 Balconies  
**Super Area: 1295 sq. ft.**

Unit No.: 1, 2, 5 & 6  
 Tower: D & E

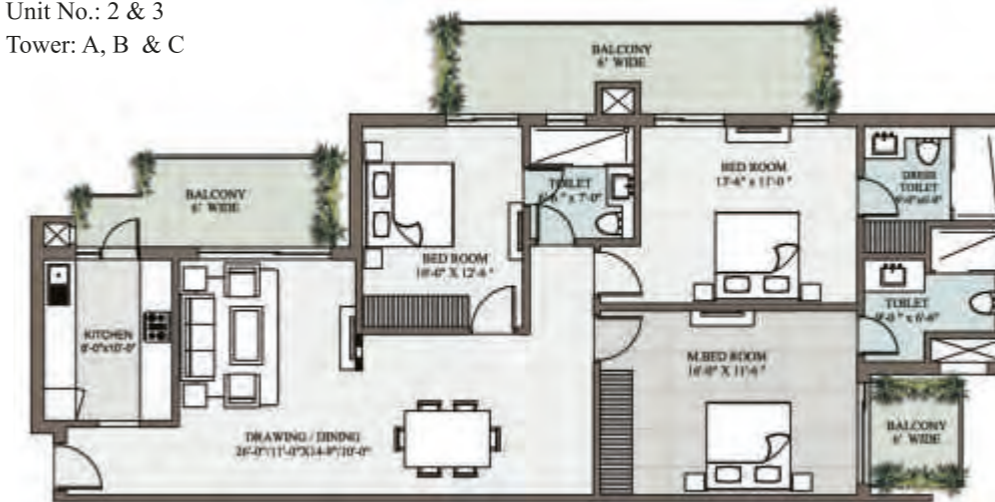


Cluster Plan

## Unit Plans

3 BHK  
 + 3 Toilets  
 + 3 Balconies  
**Super Area: 1945 sq. ft.**

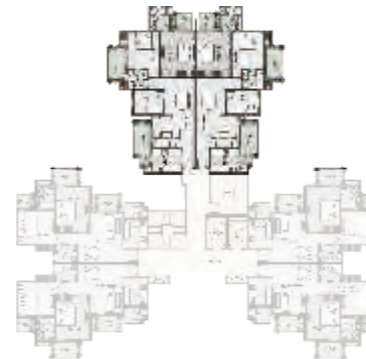
Unit No.: 2 & 3  
 Tower: A, B & C



Cluster Plan

2 BHK + Study  
 + 2 Toilets  
 + 3 Balconies  
**Super Area: 1530 sq. ft.**

Unit No.: 3 & 4  
 Tower: D & E

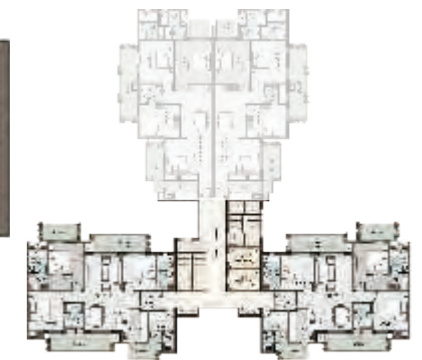


Cluster Plan

(1 sq mtr = 10.76391 sqft)

3 BHK + Entrance foyer  
 + 3 Toilets  
 + 4 Balconies  
 + 2 Dressing Rooms  
 + Servant Room  
**Super Area: 2215 sq. ft.**

Unit No.: 1 & 4  
 Tower: A, B & C



Cluster Plan

(1 sq mtr = 10.76391 sqft)



*The Aravallis have the oldest granitic and gneissic rocks at their base, making them a sturdy testimony to India's evolving civilization since centuries.*

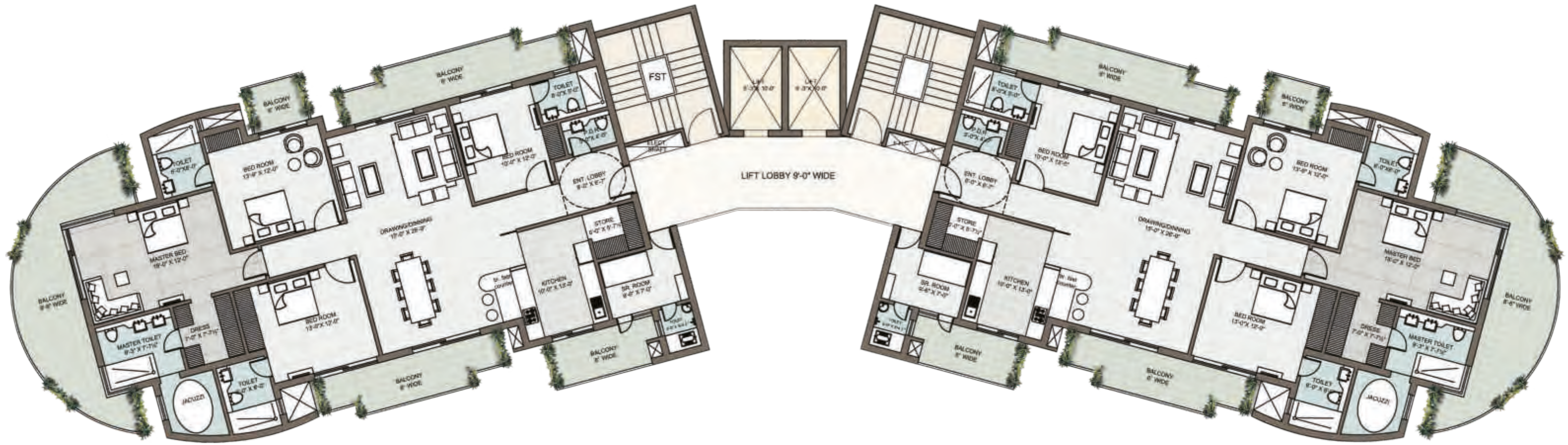




- 4 BHK + Entrance foyer
- + 4 Toilets
- + 5 Balconies
- + 1 Dressing Room
- + Store
- + Servant Room
- Super Area: 3620 sq. ft.**
- Double height tower entrance lobby
- Jacuzzi in specially designed master toilet

Unit No.: 1 & 2  
Tower: F

## Cluster Plan



Unit 1

Unit 2

(1 sq mtr = 10.76391 sqft)





# Specifications



## STRUCTURE

Earthquake resistant RCC framed structure with external brick/block walls.



## VASTU

Vastu compliant project

- The tallest tower has been positioned in Naritya cone
- The underground tank has been positioned in Ishan cone
- Ishan cone has open space and play area



## WALL-FINISH

**Internal :** Internal walls in cement plaster with POP punning with plastic emulsion paint or texture finish.

**External :** Combination of stone, tiles, Acrylic emulsion/ Texture paint.



## FLOORING/WALLDADO

### Drawing Room, Living, Dining:

Italian/ Spanish marble of Perlatosislia / Bottichino / Crema Marfil / Dyna or equivalent quality with designer patterns.

### Bedrooms:

Vitrified tiles / High quality wooden laminate flooring.

### Study Room:

Vitrified tiles / High quality wooden laminate flooring.

### Balcony:

High quality anti skid ceramic tiles.

### Servant Room/study:

Ceramic tiles kitchen counter with high quality granite/ imported marble floor and wall dado with high quality ceramic tiles.

### Toilets:

Imported Beige Marble/ Spanish vitrified tiles or equivalent flooring. Spanish tiles in walls till ceiling height for the master toilet. All other toilets will have high quality imported ceramic floor & wall tiles up to 7' height, balance painted in acrylic emulsion paint.



## KITCHEN

Imported fittings of Kohler or equivalent. Double bowl stainless steel sink with drain board. Designer/ modular woodwork & fittings. Provisions for piped gas supply & R.O. system.



## DOORS & WINDOWS

**Main Entrance :** Elegantly designed and finished 8 feet high entrance door with polished hardwood frame having European style molded shutter with high quality imported/Indian hardware fittings.

**Internal Doors :** Seasoned hardwood frame with European style moulded shutters.

**Windows :** Branded UPVC windows.

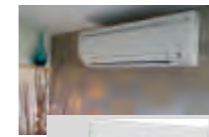


## TOILETS

Premium quality imported sanitary/ high class wall hung W.C. and washbasin in matching shades/ colors. Single lever C.P. Fittings Kohler/ Jaquar or equivalent. All the toilets will include glazed shower enclosure, exhaust fan, mirror, towel rack, rod & ring accessories.

**For Specially Designed Master Toilet (for tower A, B, C, D & E):** Cubicle / bathtub, mirror with wall mounted vanity lighting & geyser as per specially designed scheme for Master toilet.

**For Specially Designed Master Toilet (for tower F):** Jacuzzi , cubicle bathtub, mirror with wall mounted vanity lighting & geyser as per specially designed scheme for master toilet.



## OTHERS

Branded split air conditioners in the master bedroom & living room. Modular wardrobes/cupboards in all the bedrooms.



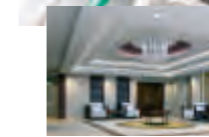
## ELECTRICALS

Modular range switches/sockets (Legrand or Equivalent)/MCBs, copper wiring. Two wall light fixtures in each of living, dining, lobby and bedrooms area.



## POWER BACK-UP

100% power back-up per apartment.



## COMMUNICATION

TV and telephone points, EPABX and video door phone.



## SECURITY

Secured gated community with access control at entrances with Automatic boom barriers and manual gates at entry and exits of the development. CCTV in basements, ground floor lobbies and main entrance lobby for surveillance. EPABX system linked to each unit. Access control cards and video door phone for each apartment.

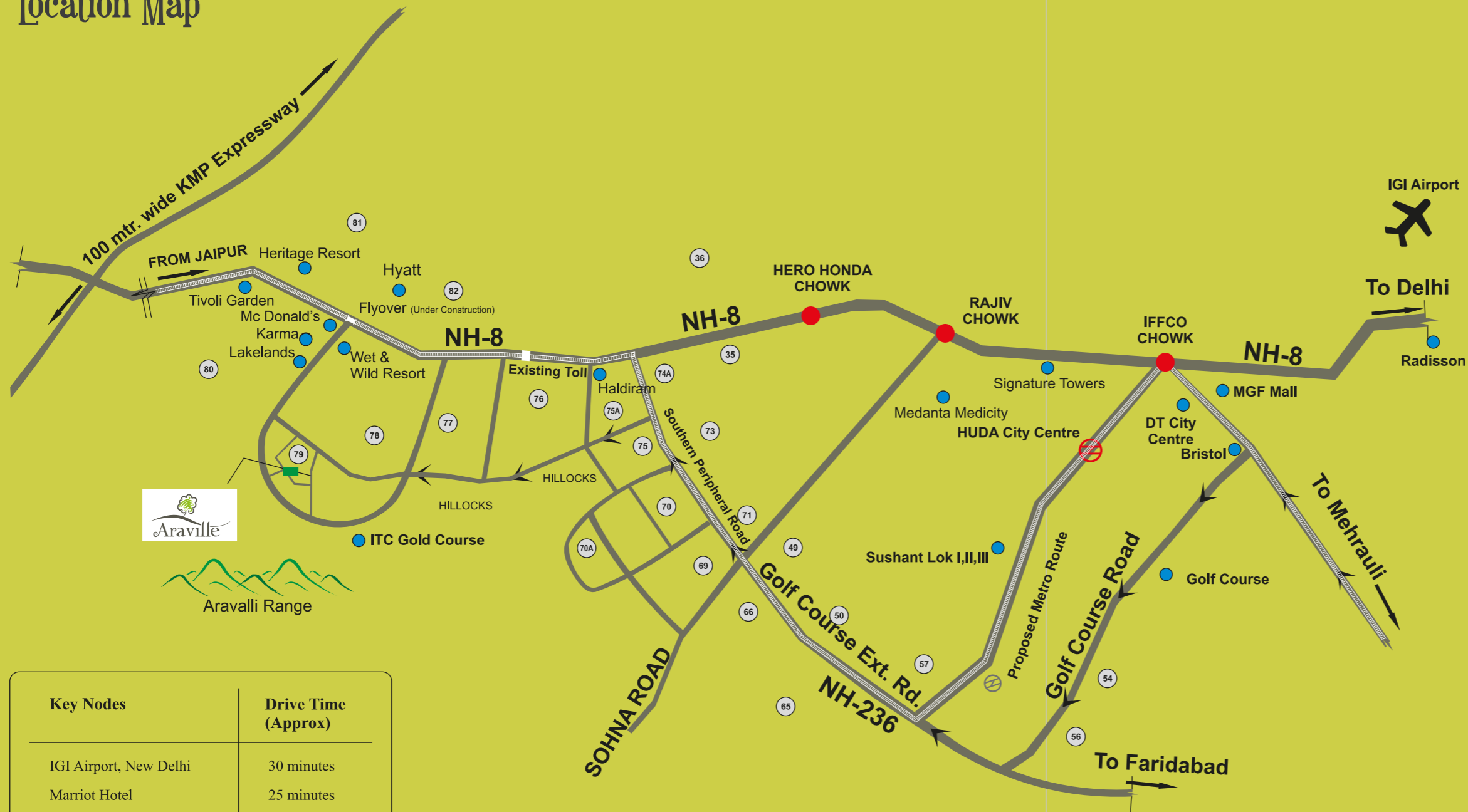


## FACILITIES

Pitch & Putt golf park, high speed elevators, treated water supply, adequate basement parking, landscaped areas with quaint benches tennis court, pedestrian path, jogging trail, children's play area, nursery school.



# Location Map



Key Nodes	Drive Time (Approx)
IGI Airport, New Delhi	30 minutes
Marriot Hotel	25 minutes
IFFCO CHOWK, Gurgaon	22 minutes
Rajiv Chowk	20 minutes
Nearest Mall	18 minutes
Hyatt Hotel	15 minutes
NH-8, Gurgaon	5 minutes
Southern Peripheral Road	5 minutes

Indicative Map not to Scale

Green is always close to your heart.

With a strategic location that fuses nature and culture, green now means home to you.



Located just off NH-8 in Sector 79, Araville is close to the buzz of city life in Gurgaon. It brushes shoulders with a planned 5 Star Hotel, Golf Courses, Shopping Malls, Offices, Schools, Hospitals and all conceivable modern amenities. Rest assured you'll never be far from life, yet be far from the madding crowd.



Thousands of butterflies are found across the entire Aravalli range, flitting from flower to fruit with no distance too far.





### Ongoing Projects

 Sector 79, Gurgaon	 Sector 118, Noida	 Sector 74, Noida	 Sector 94, Noida
 Sector 74, Noida	 Sector 74, Noida	 Sector 1, Greater Noida	 Sector 22D, Yamuna Expressway
 Sector 16B, Greater Noida	 Sector Omicron 1, Greater Noida	 Sector 34, Noida	 Sector 17A, Yamuna Expressway
 Crossings Republik, Ghaziabad	 2/3 Bedroom Cosmopolitan Studio Apartments Sector 93A, Noida	 Sector 93A, Noida	 Sector 16B, Greater Noida
 Sector 96, Noida	 Sector 16B, Greater Noida	 Sector 137, Noida	<p>...and many more</p>

### Over 2 decades of creating tomorrow's NCR

### Successfully Delivered Projects

 Expressway, Noida Sector 93A, Noida	 Sector 61, Noida	 Sector 5, Vaishali, Ghaziabad	 Sector 5, Vaishali, Ghaziabad
 Sector 5, Vaishali, Ghaziabad	 Kaushambi, Ghaziabad	 Indirapuram, Ghaziabad	 Simply Enchanting Vaishali Extension, Ghaziabad
 Sector 62, Noida	 Rajendra Nagar, Ghaziabad	 Sector 58, Noida	<p>...and many more</p>

#### Key Milestones:

More than 10,000 units delivered | Projects across 36 locations | More than 50,000 satisfied customers | Over 2 decades of delivering world-class projects in Residential, Retail, IT Parks, Hospitality and Corporate Spaces | Over 75 million square feet of real estate under development | Projects worth INR 140 billion in progress

DGTCP Haryana has granted license No. 37 of 2011 dated 26/04/2011 to M/S Tirupati Buildplaza Private Limited (A GPL Group Company) for development of Group Housing Project on 10.0 Acres land falling in sector 79, Gurgaon. The building plans have been approved vide memo no. ZP-794/JD(BS)/2012/8000 dated 10-05-2012 Number of Flats 518, EWS 92. There is a provision of nursery school, community center, shopping area. Note- Approvals can be seen in the office of the developer. This is a Joint Venture of GPL Group and Supertech Ltd.

Disclaimer: This brochure is purely conceptual and not a legal offering. The visuals, specifications, floor plans and other technical information is indicative and may be changed if required at any point in time. Further, the promoters / architects reserve the right to change the information without any prior notice.