

The life

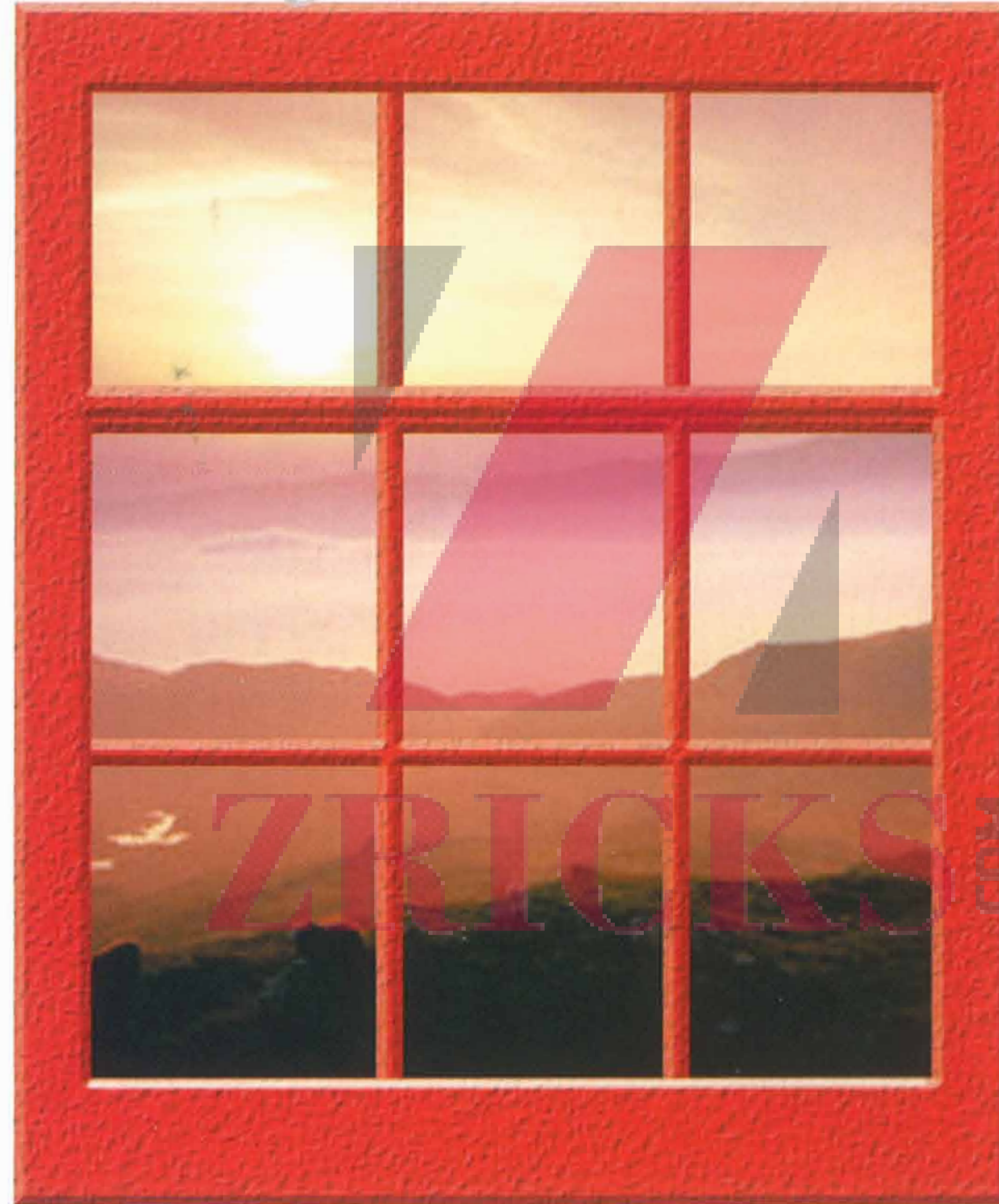


above



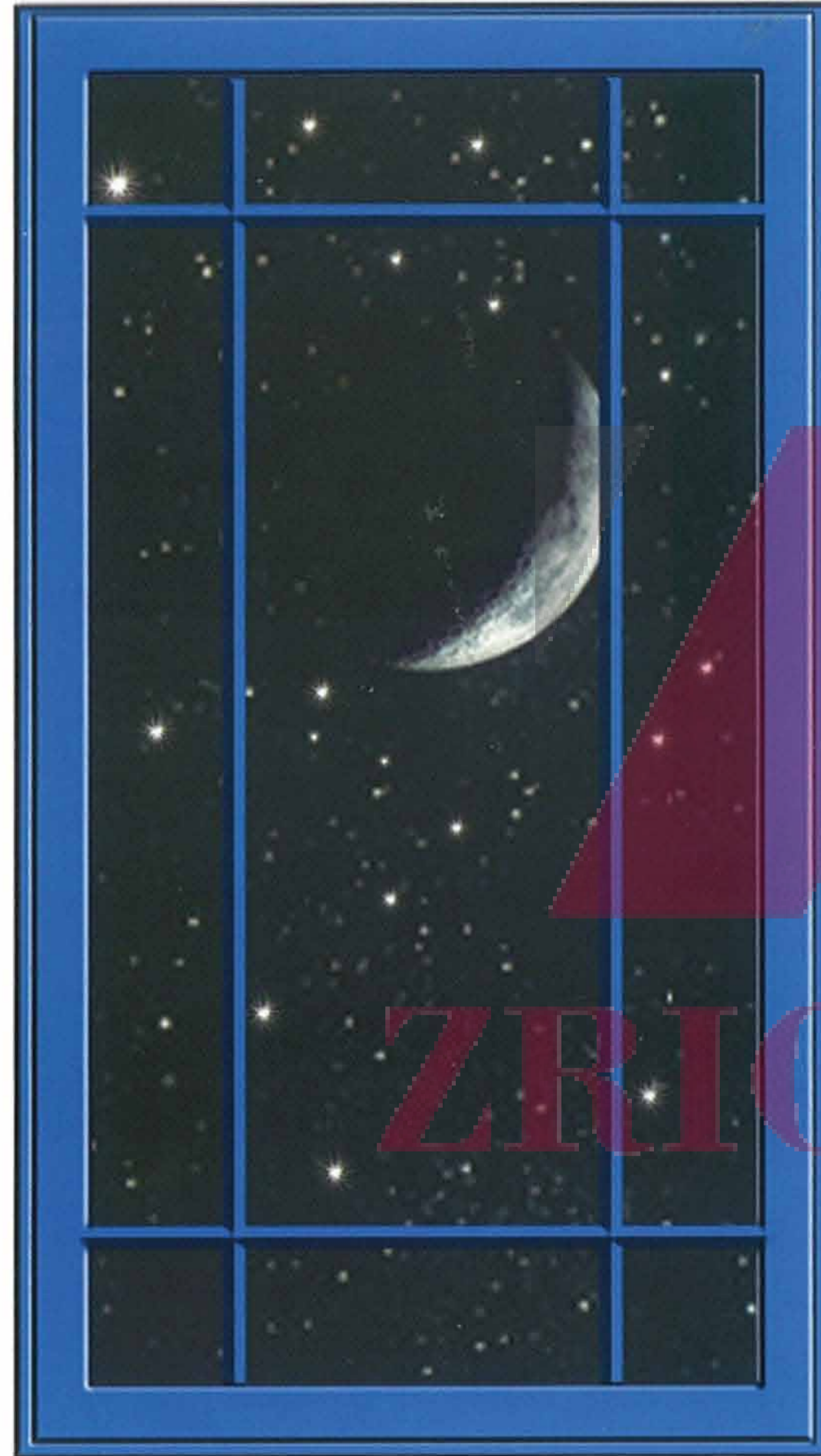
On top of the world.
Free, flying serenity.
Endless sunsets.
Stars at your feet.
Sound of silence.
That's life at Unitech Heights.
And you're invited.

The Rising Sun



As we speak, Unitech is turning many a barren land into a landmark. The finest in real estate design and construction, Unitech is also the largest developer and builder in the country. It's ranked among the top 50 real estate companies in the world. And no wonder it's the first winner of the ISO 9002 certification for design, planning, construction and marketing in the NCR of Delhi.

Reaching

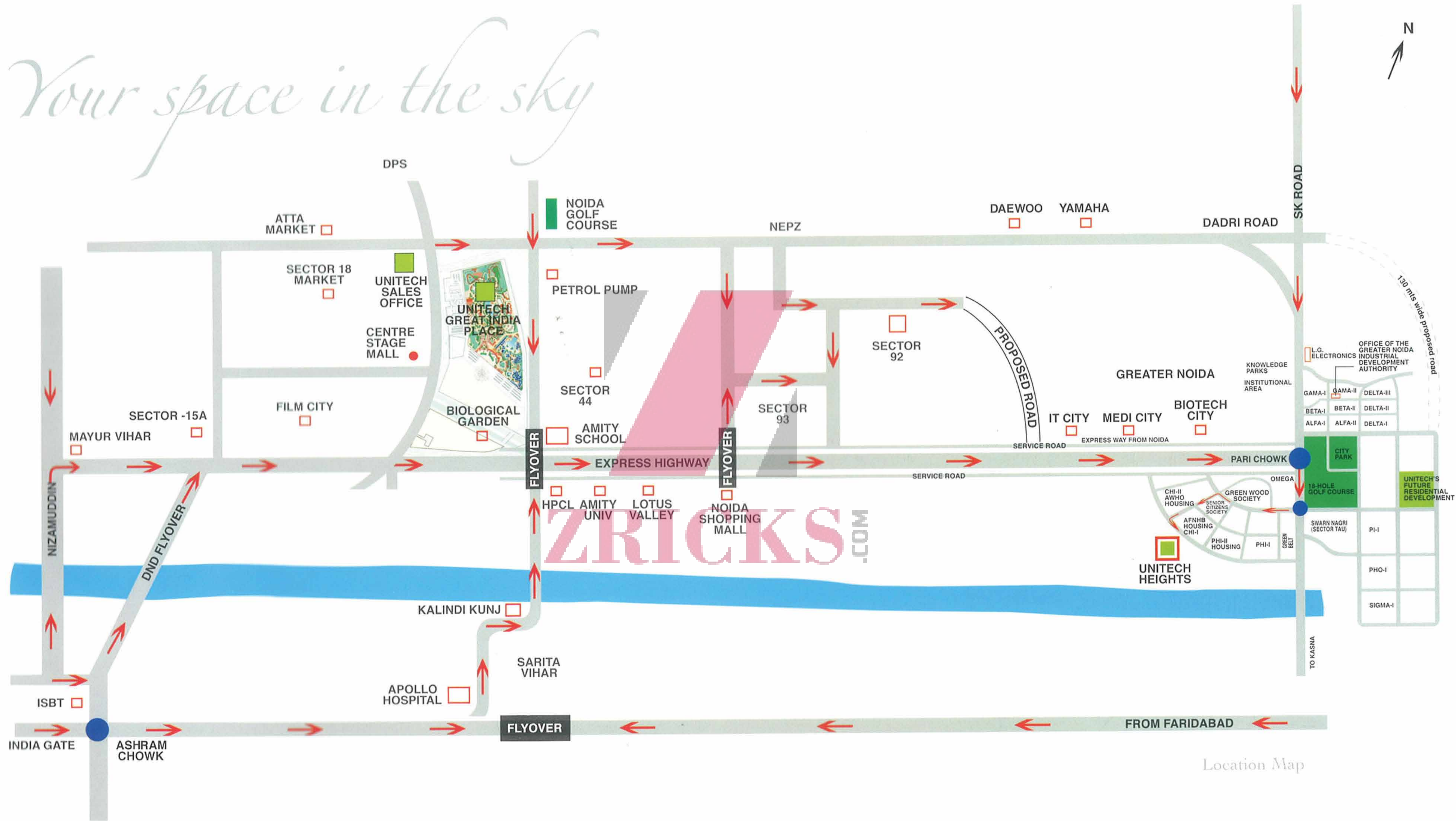


ZRICKS.COM

for the stars

The skylines are changing at Greater Noida. Facilities surpass any other township in the region. From Asia's largest theme park to the country's first trade mart. From 24 hour gated landscape to futuristic systems. From 'no pollution' environment to 24x7 power supply, Greater Noida's look is changing and Unitech is leading the change.

Your space in the sky



Location Map

Changing the skyline



Night aerial view of Unitech Heights



Night view of Unitech Heights



Day view of Unitech Heights



View of the Clubhouse

Landscape Plan

A. Main entrance

B. Clubhouse

C. Fitness centre

D. Swimming pool

E. Children's playroom

F. Children's playground

G. Service building

H. Timber pavilion

J. Common area

K. Multipurpose lawn

L. Ramp to car parking

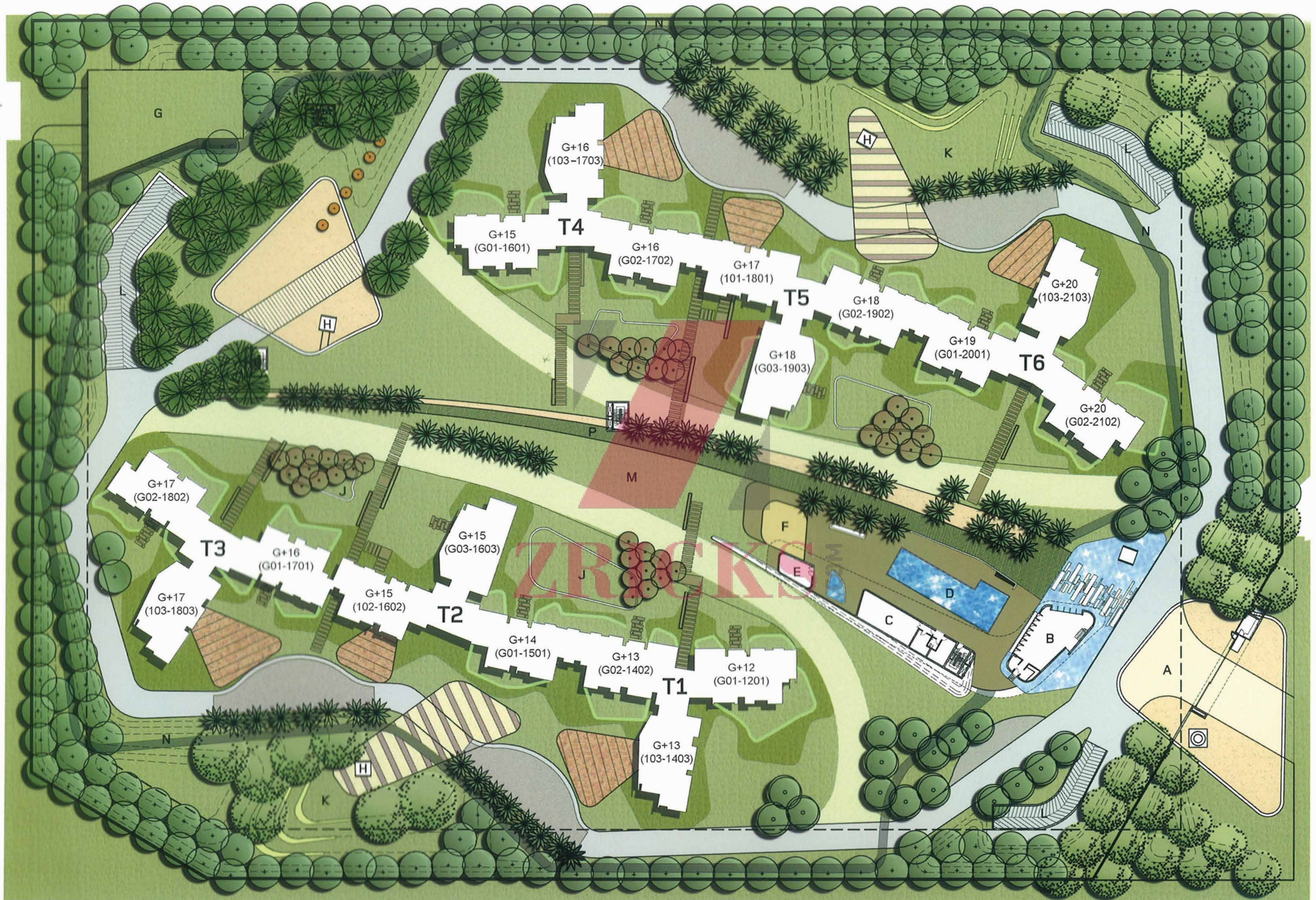
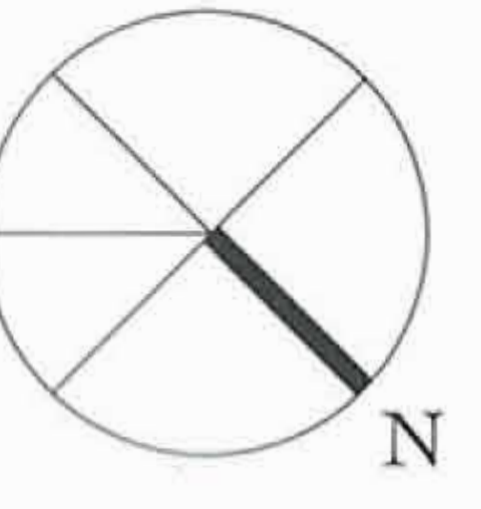
M. Main event lawn

N. Jogging track

P. By-pass walkway

ZRICKS.COM

Service
Entry



Entry

Note: Floor Number 13 is absent in this project.

On top



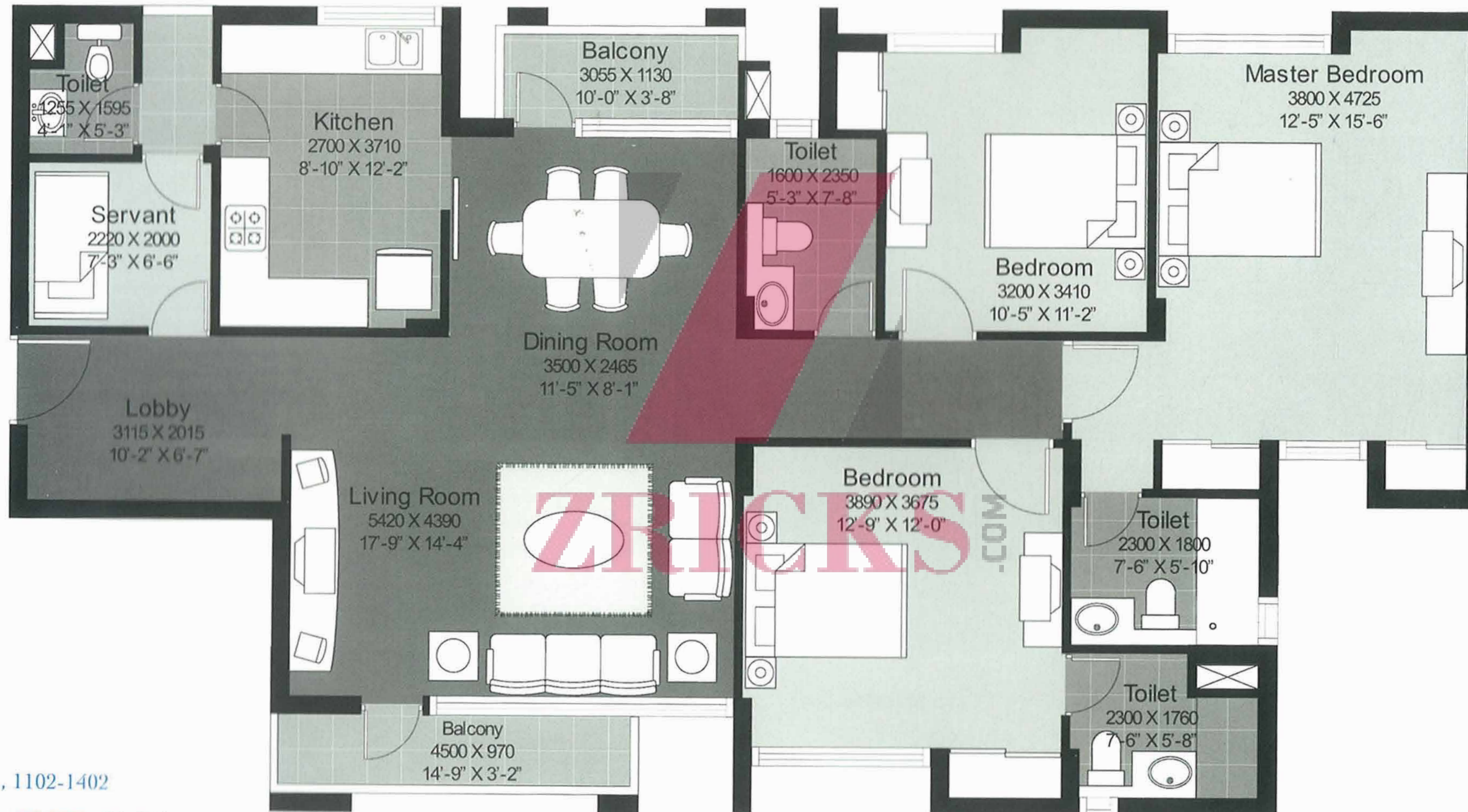
ZRICKS.COM

of the world

Unitech Heights is a celebration of the life above. Everything here is down to earth yet it touches the skies. Sprawling over 8 acres of landscaped greens, your space in the skies is a choice from 6 towers, upto 21 storeys high.

Type A

(3 BR + Servant room)



Tower T1 - 202-402, 1102-1402

Tower T2 - 101-201, 402-902, 601-801

Tower T3 - 501-701^o, 1501-1701^o

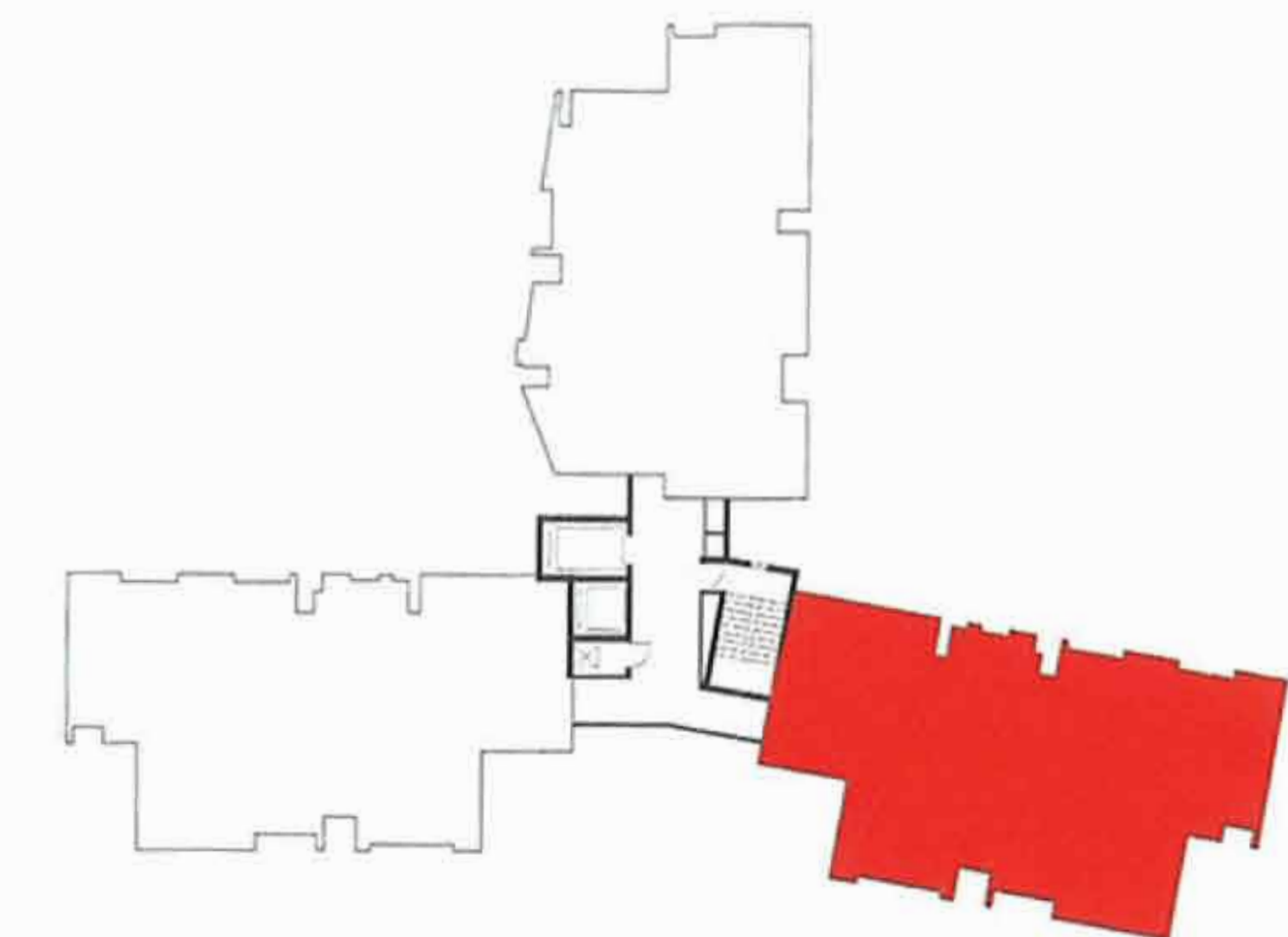
Tower T4 - 102, 802-1002, 1502-1702

Tower T5 - 101-201, 901-1501, 702-1202, 1702-1902

Tower T6 - 101, 501-701, 1101-1701

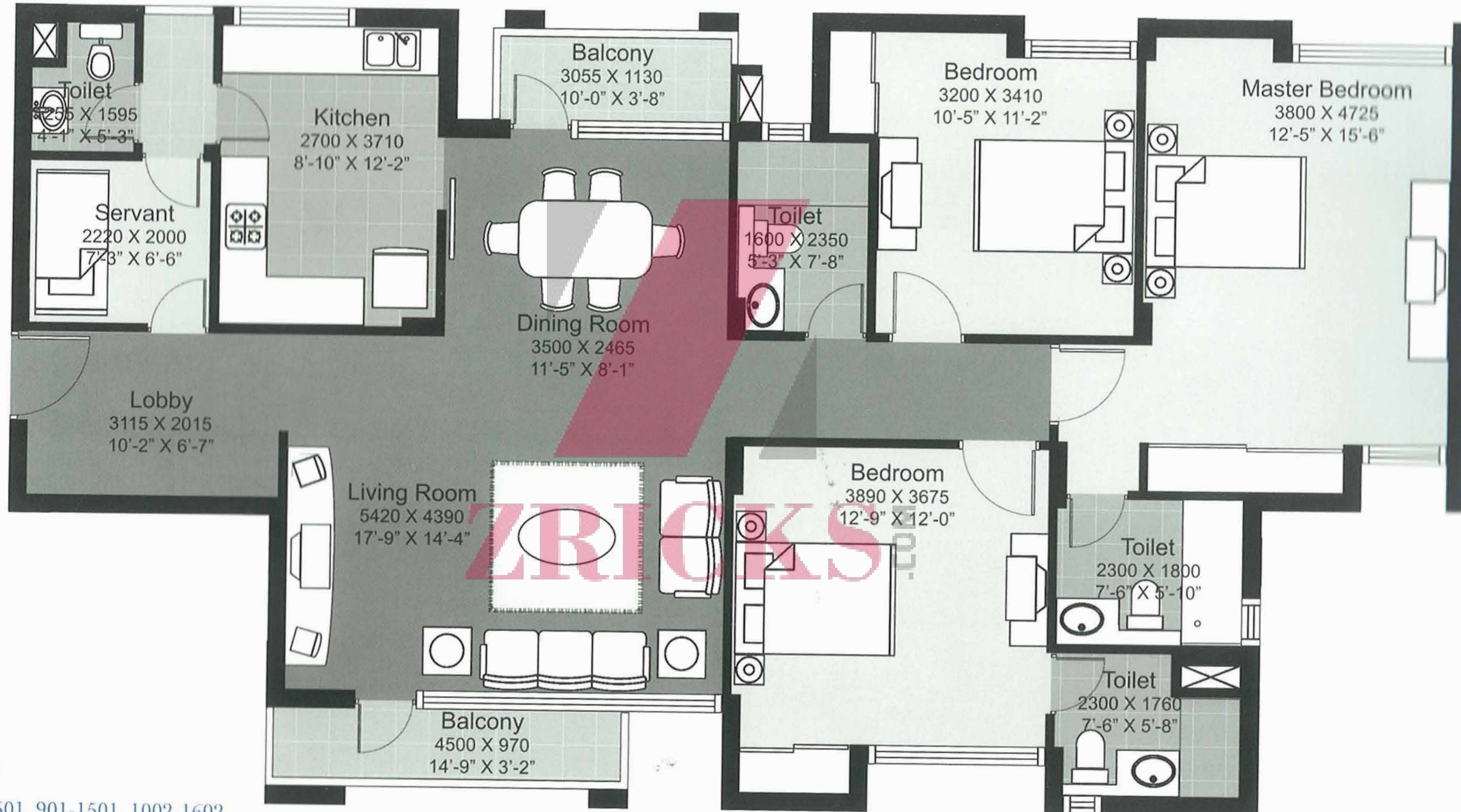
^oFlipped floor plan of the shown image.

1913 sq.ft. (177.75 sq.m.)



Type A1

(3 BR + Servant room)



Tower T1 - 102, 502-1002

Tower T2 - 102-302, 301-501, 901-1501, 1002-1602

Tower T3 - 101-401*, 801-1401*

Tower T4 - 202-702, 1102-1402

Tower T5 - 102-602, 301-801, 1402-1602, 1601-1801

Tower T6 - 201-401, 801-1001, 1801-2001

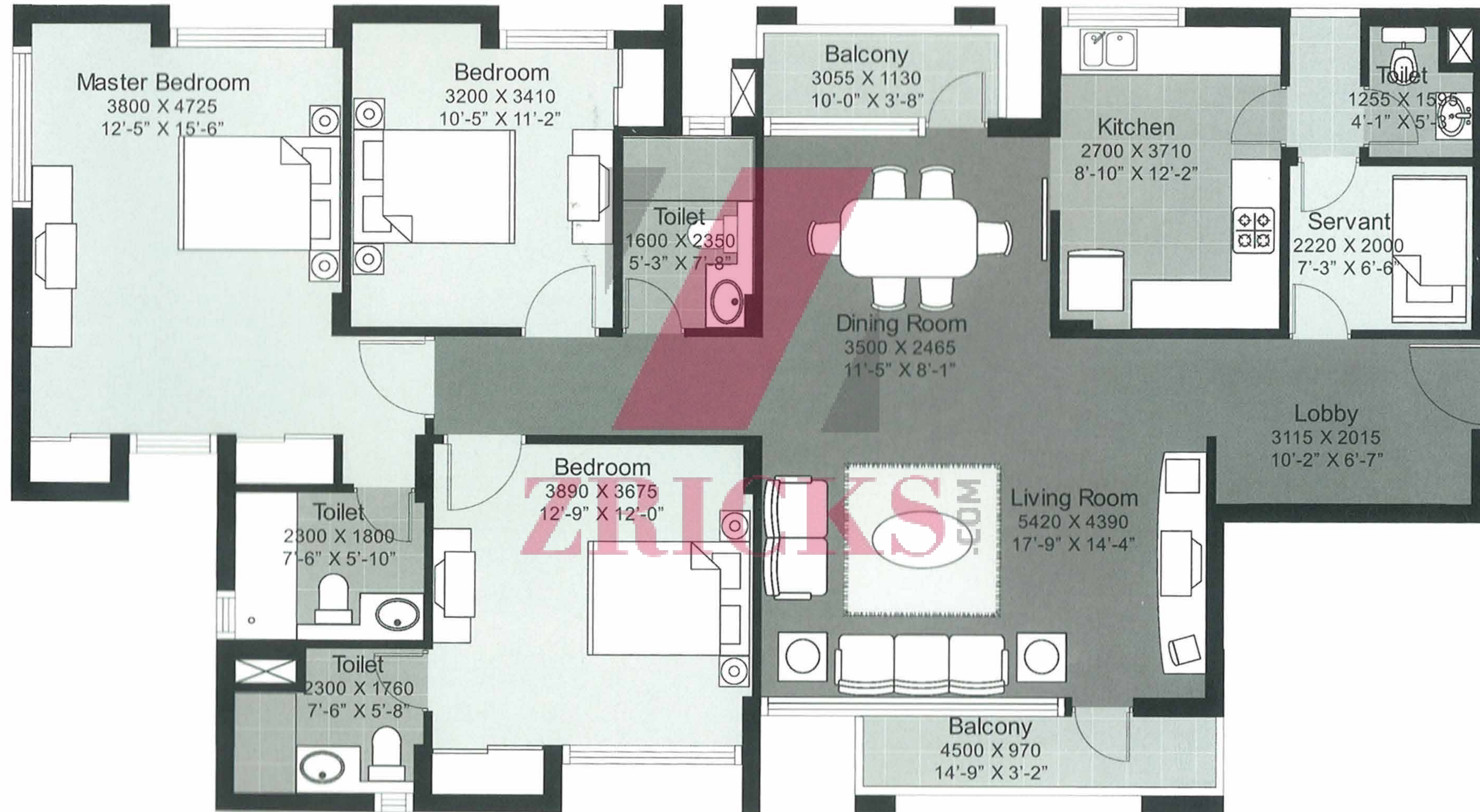
*Flipped floor plan of the shown image.

1915 sq.ft. (177.96 sq.m.)



Type A2

(3 BR + Servant room)



Tower T1 - 401-901

Tower T3 - 102-502*, 1202-1802*

Tower T4 - 401-601, 1401-1601

Tower T6 - 102-202, 602-802, 1602-1802

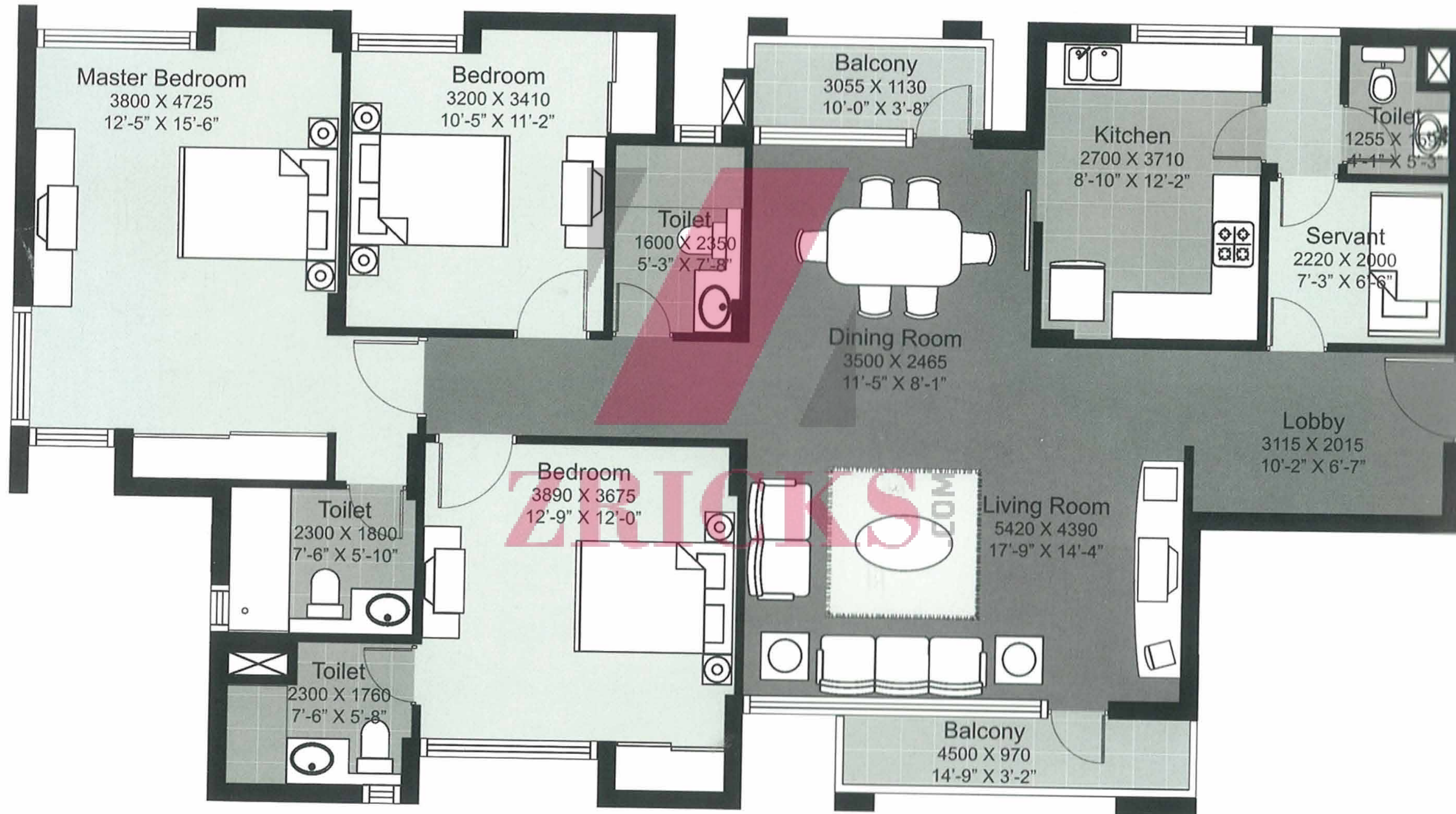
*Flipped floor plan of the shown image.

1913 sq.ft. (177.75 sq.m.)



Type A³

(3 BR + Servant room)



Tower T1 - 101-301, 1001-1201

Tower T3 - 602-1102*

Tower T4 - 101-301, 701-1201

Tower T6 - 302-502, 902-1502, 1902-2102

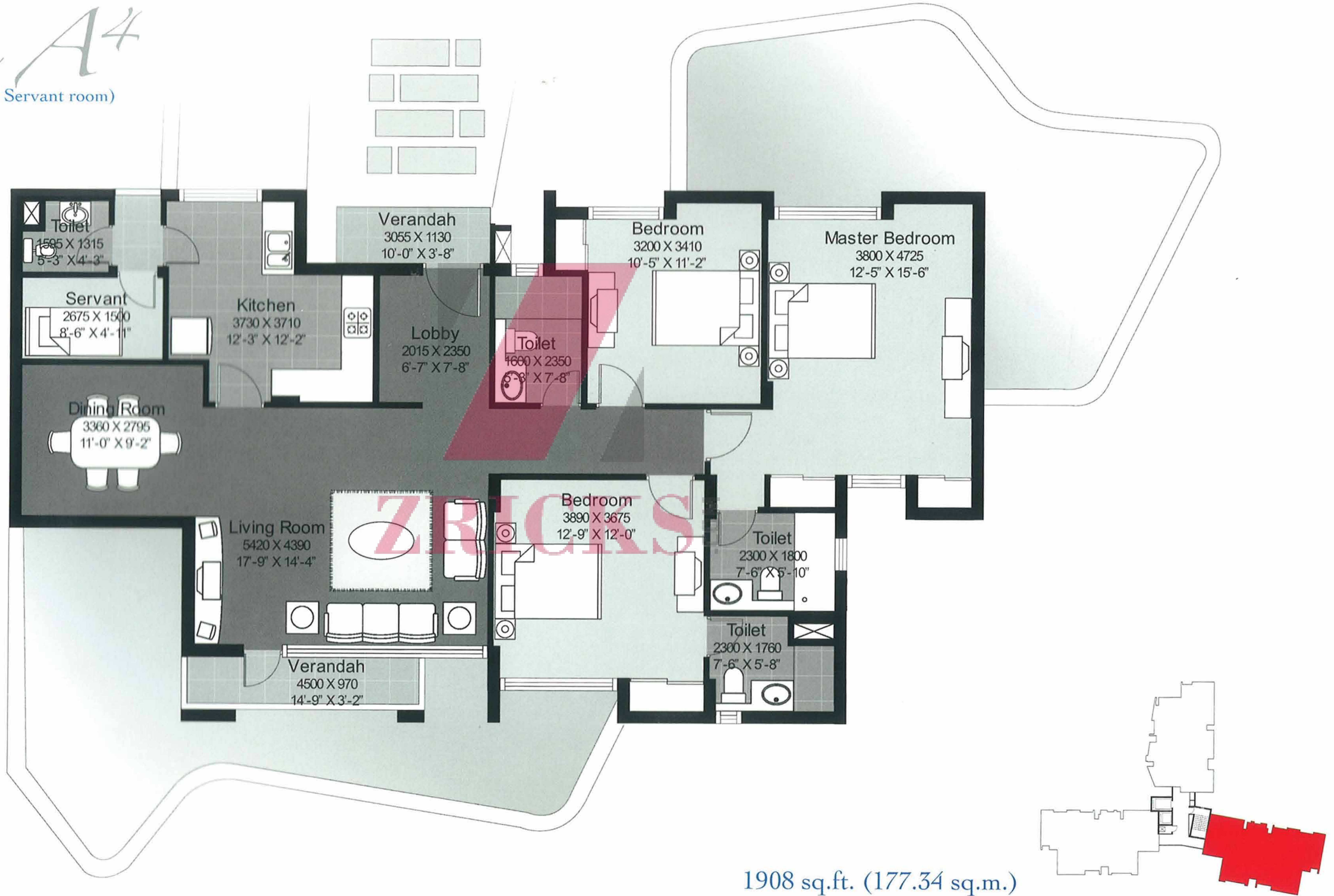
*Flipped floor plan of the shown image.

1915 sq.ft. (177.96 sq.m.)



Type A⁴

(3 BR + Servant room)



Tower T2 - G01

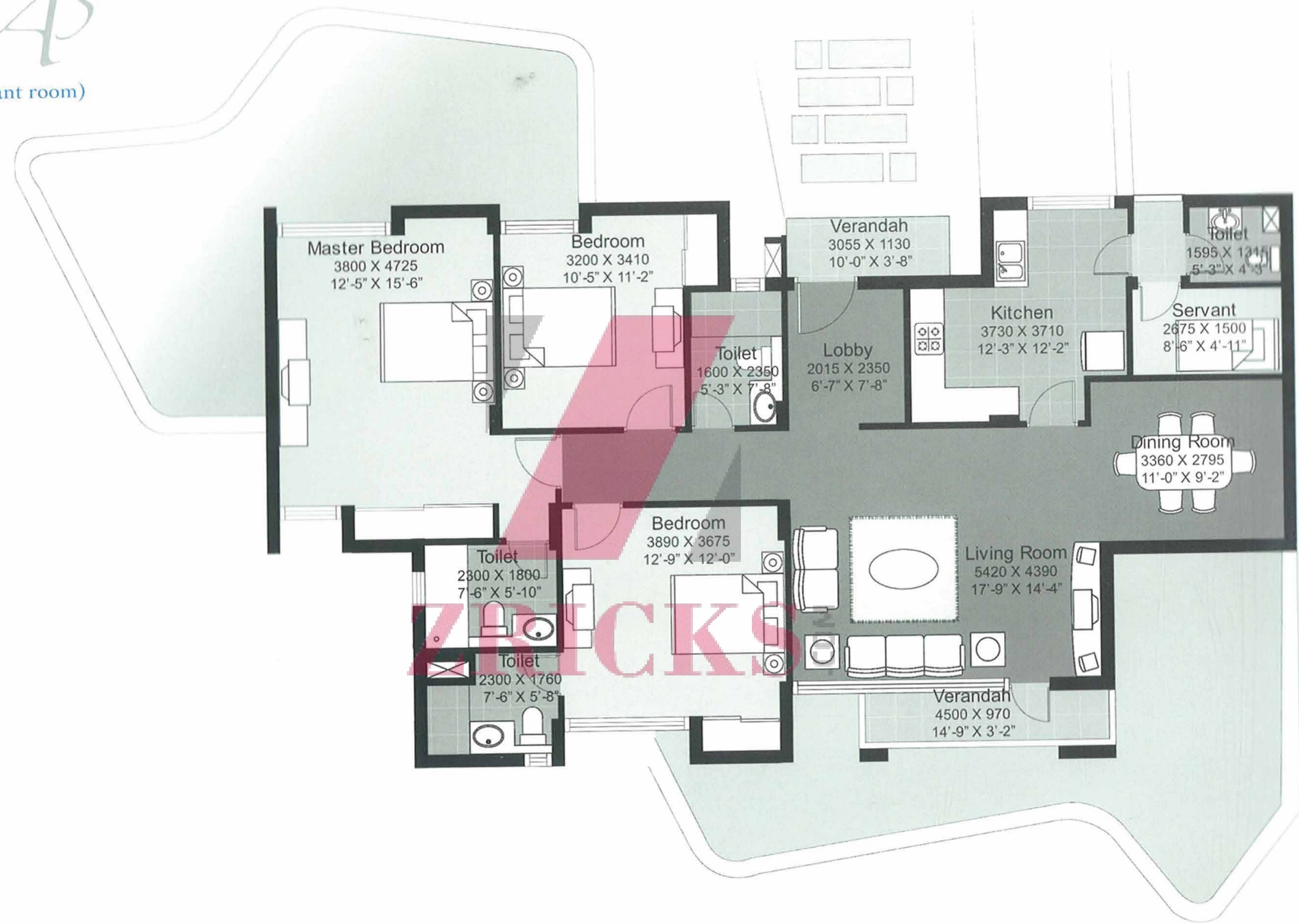
Tower T4 - G02

Tower T6 - G01

1908 sq.ft. (177.34 sq.m.)

Type A5

(3 BR + Servant room)



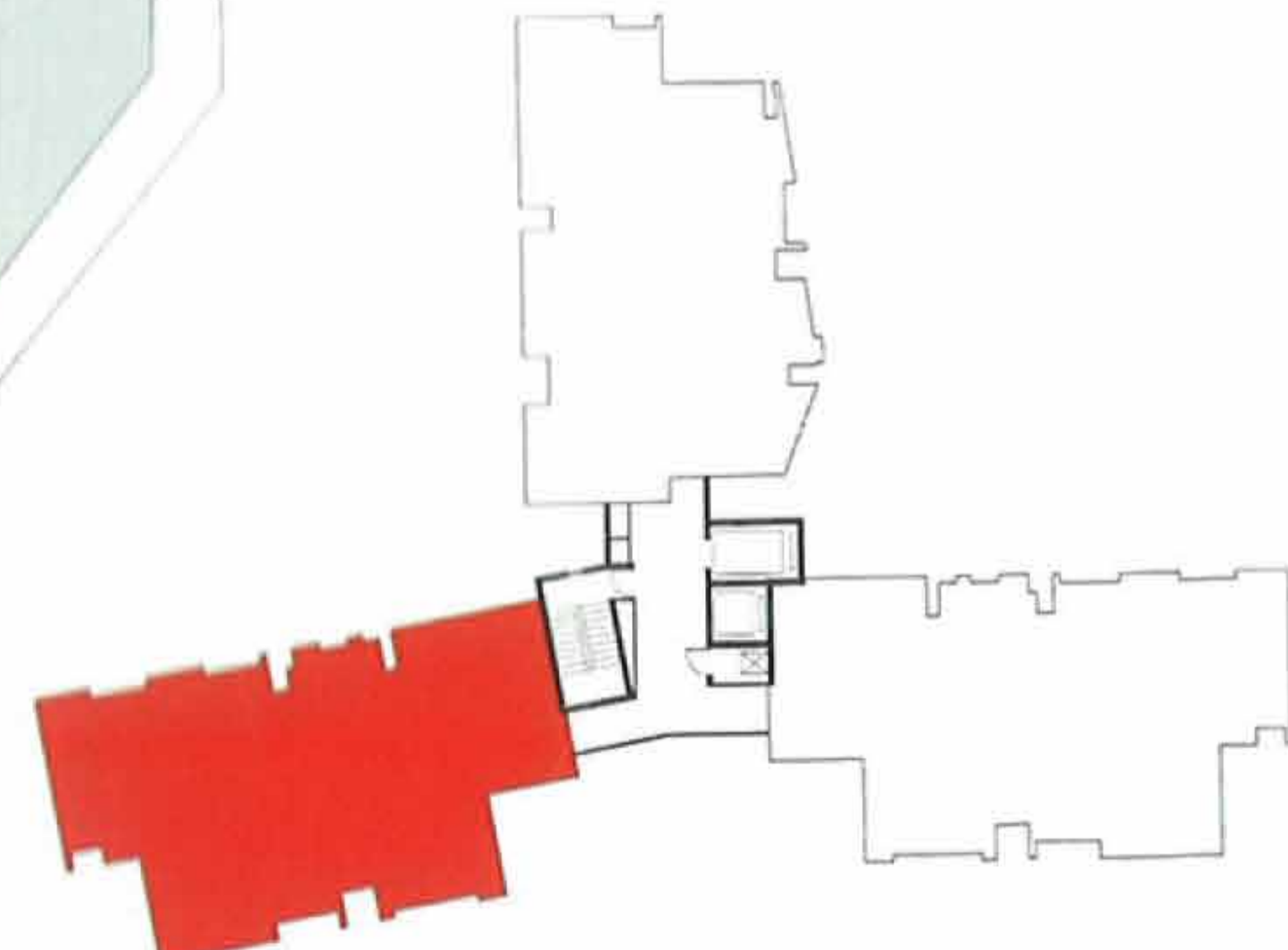
Tower T1 - G02

Tower T3 - G01*

Tower T5 - G02

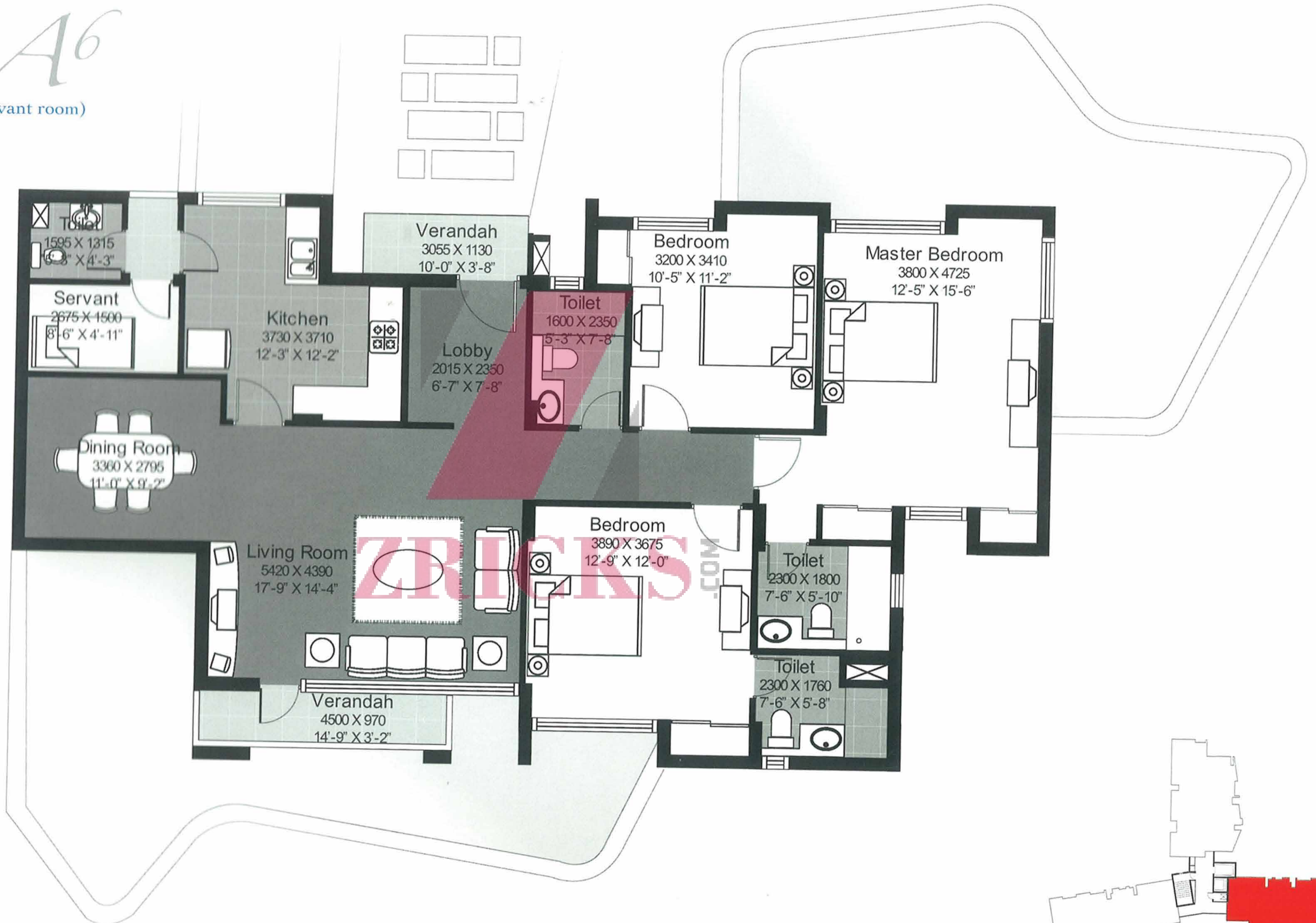
*Flipped floor plan of the shown image.

1910 sq.ft. (177.55 sq.m.)



Type A6

(3 BR + Servant room)

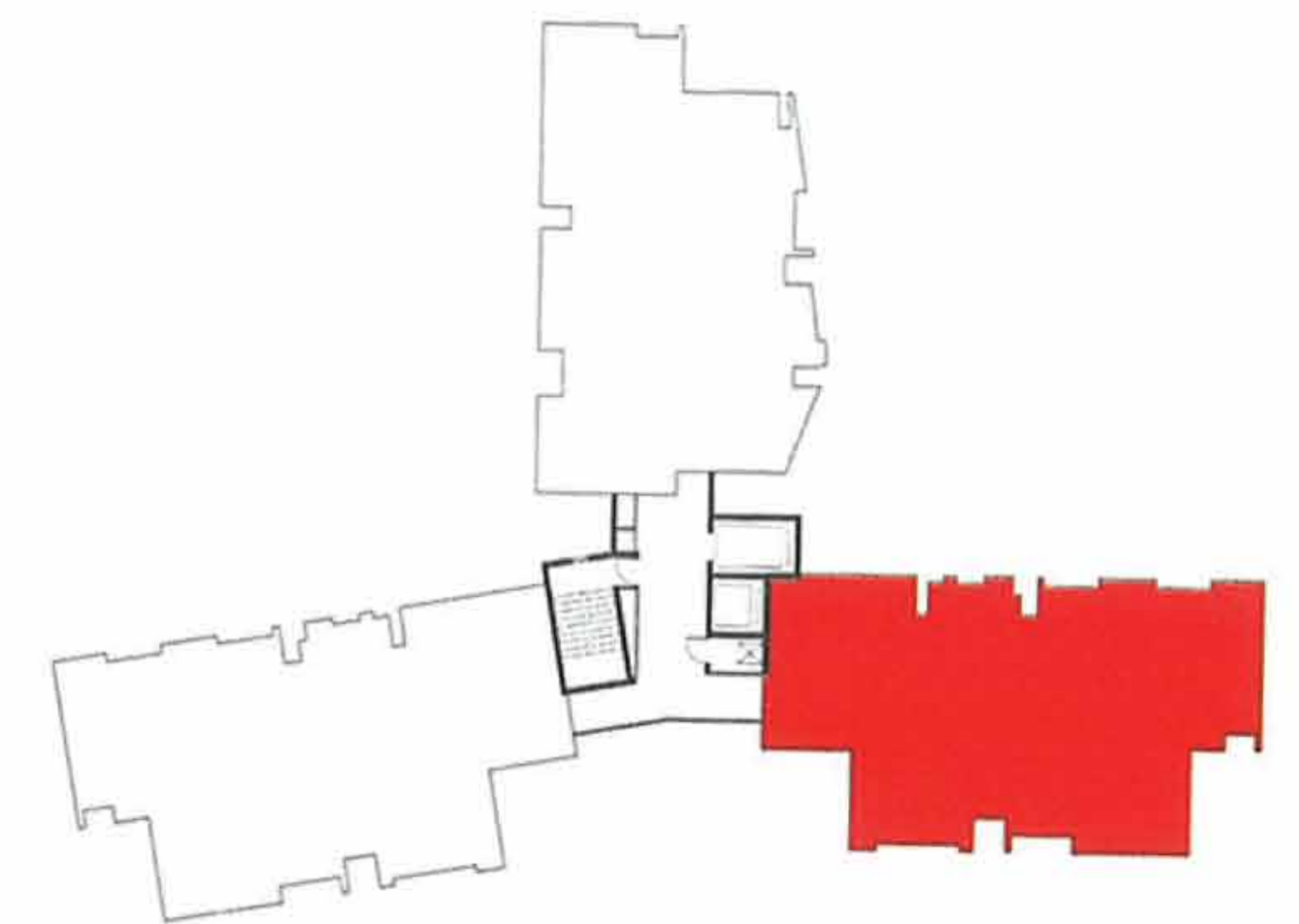


Tower T3 - G02°

Tower T6 - G02

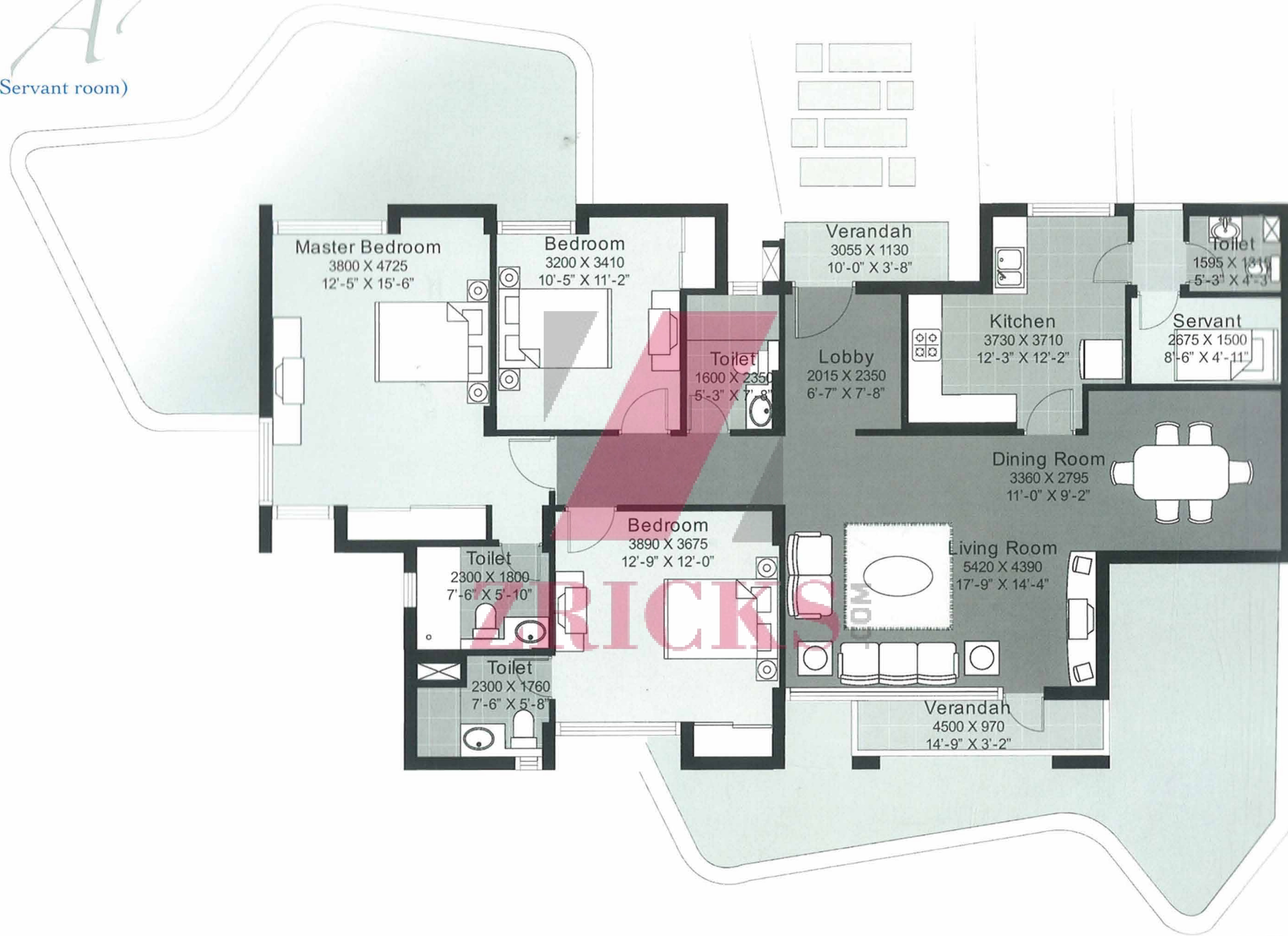
°Flipped floor plan of the shown image.

1908 sq.ft. (177.34 sq.m.)



Type A7

(3 BR + Servant room)



Tower T1 - G01

Tower T4 - G01

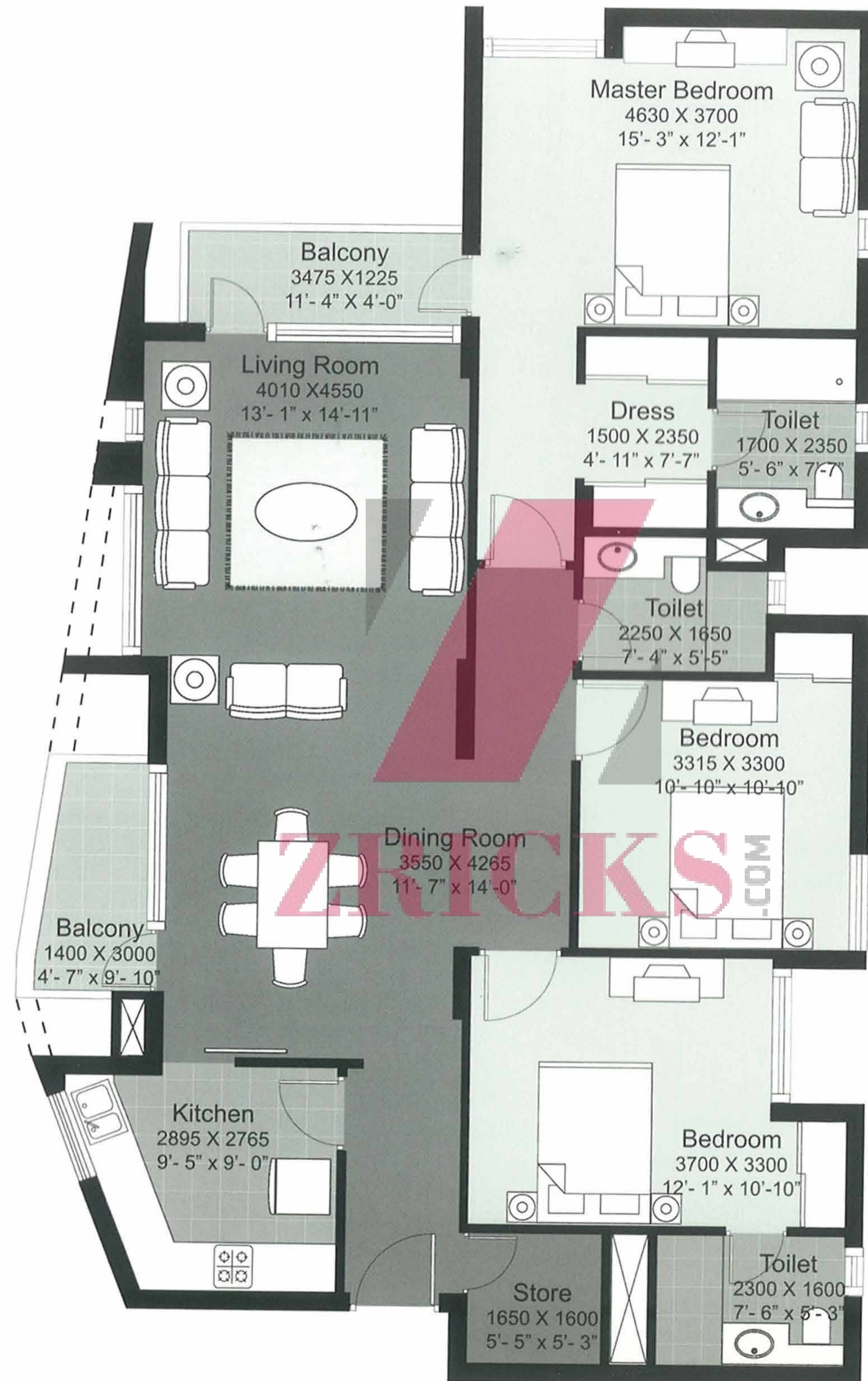
1910 sq.ft. (177.55 sq.m.)



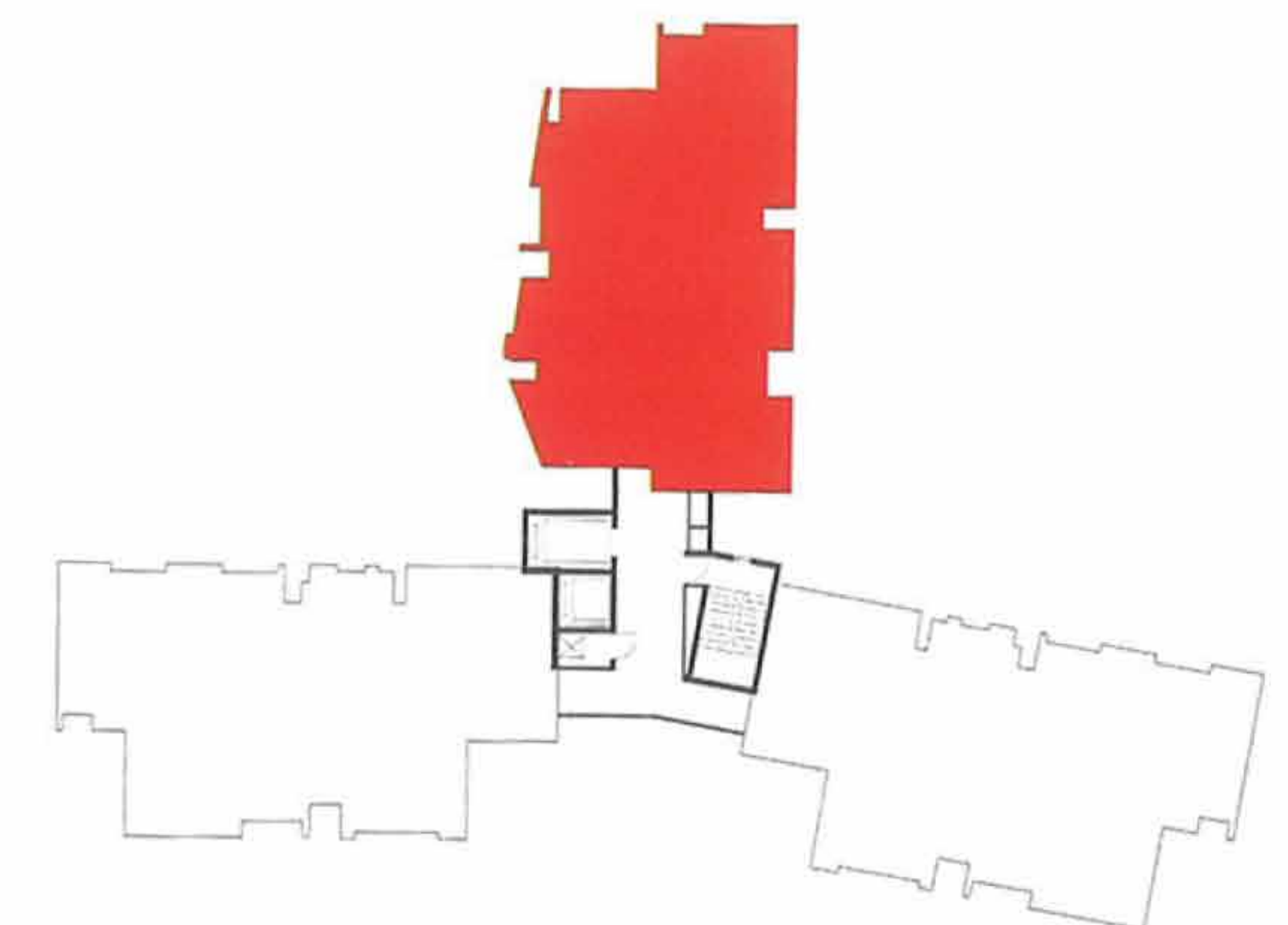
Type B

(3 BR)

1824 sq.ft. (169.46 sq.m.)



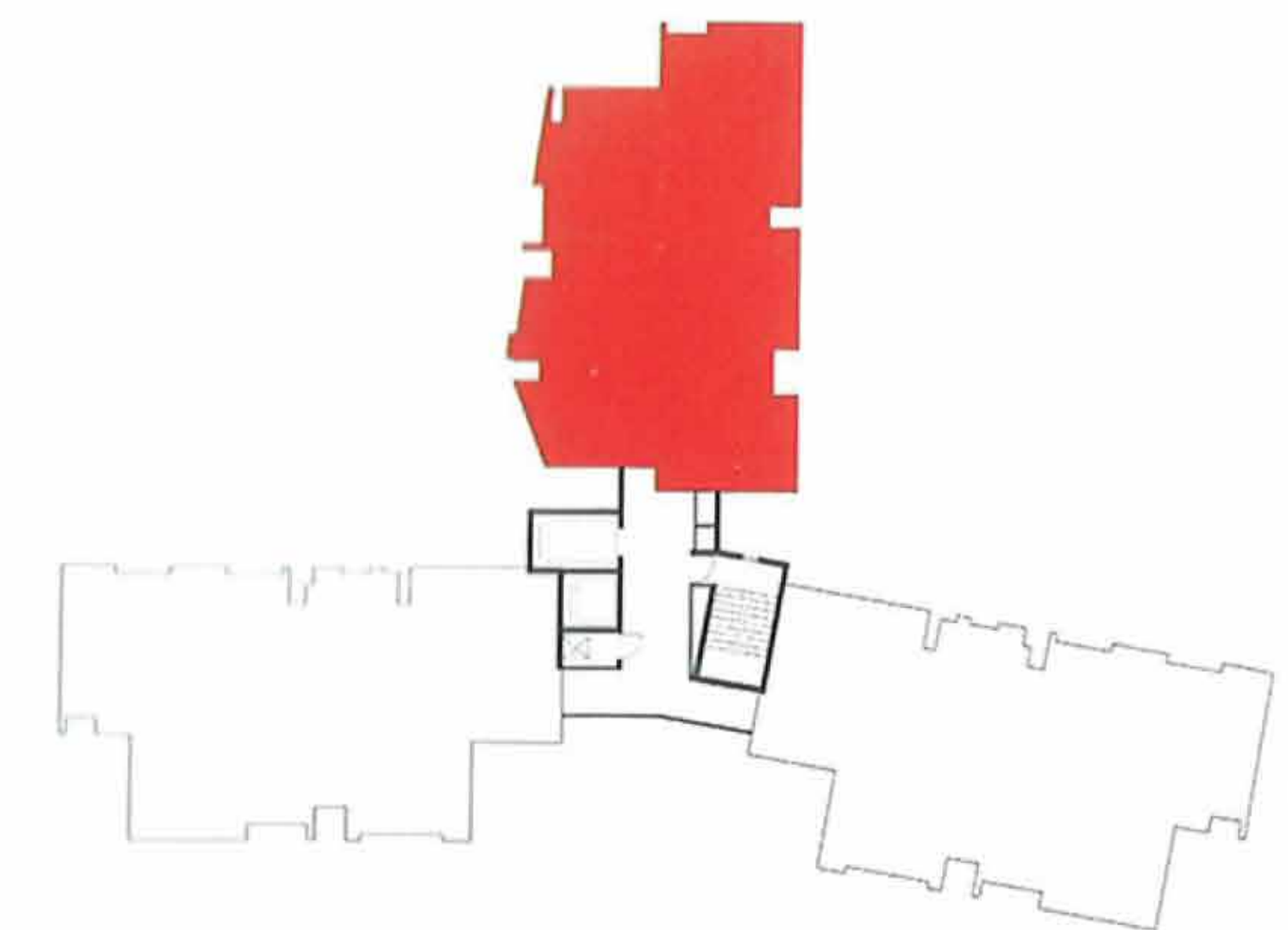
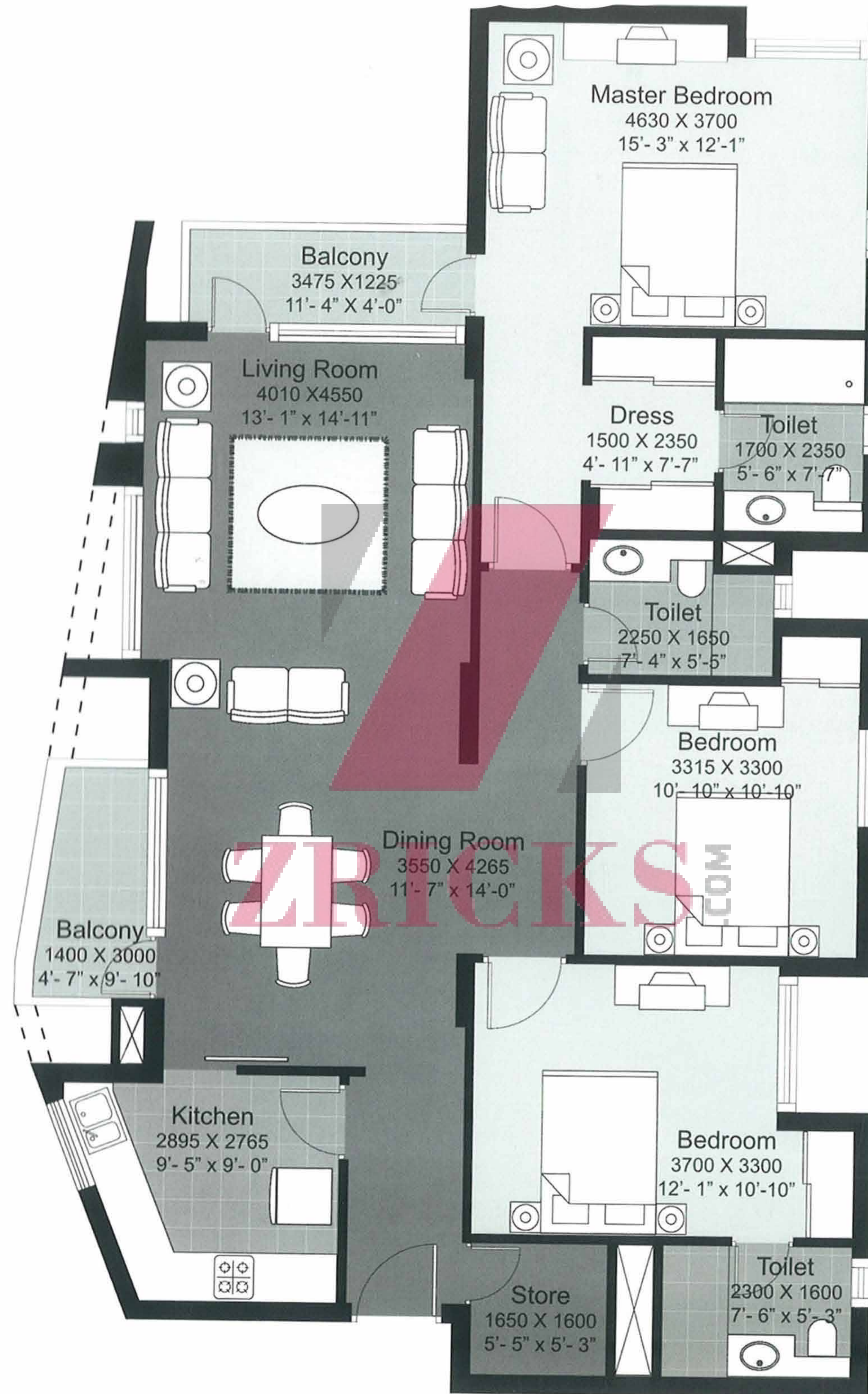
- Tower T1 - 103-503, 1203-1403
 - Tower T2 - 103-503, 1203-1603
 - Tower T3 - 103-403, 1003-1503
 - Tower T4 - 103-403, 1103-1703
 - Tower T5 - 103-603°, 1403-1903°
 - Tower T6 - 103-803°, 1603-2103°
- °Flipped floor plan of the shown image.



Type B¹

(3 BR)

1824 sq.ft. (169.46 sq.m.)



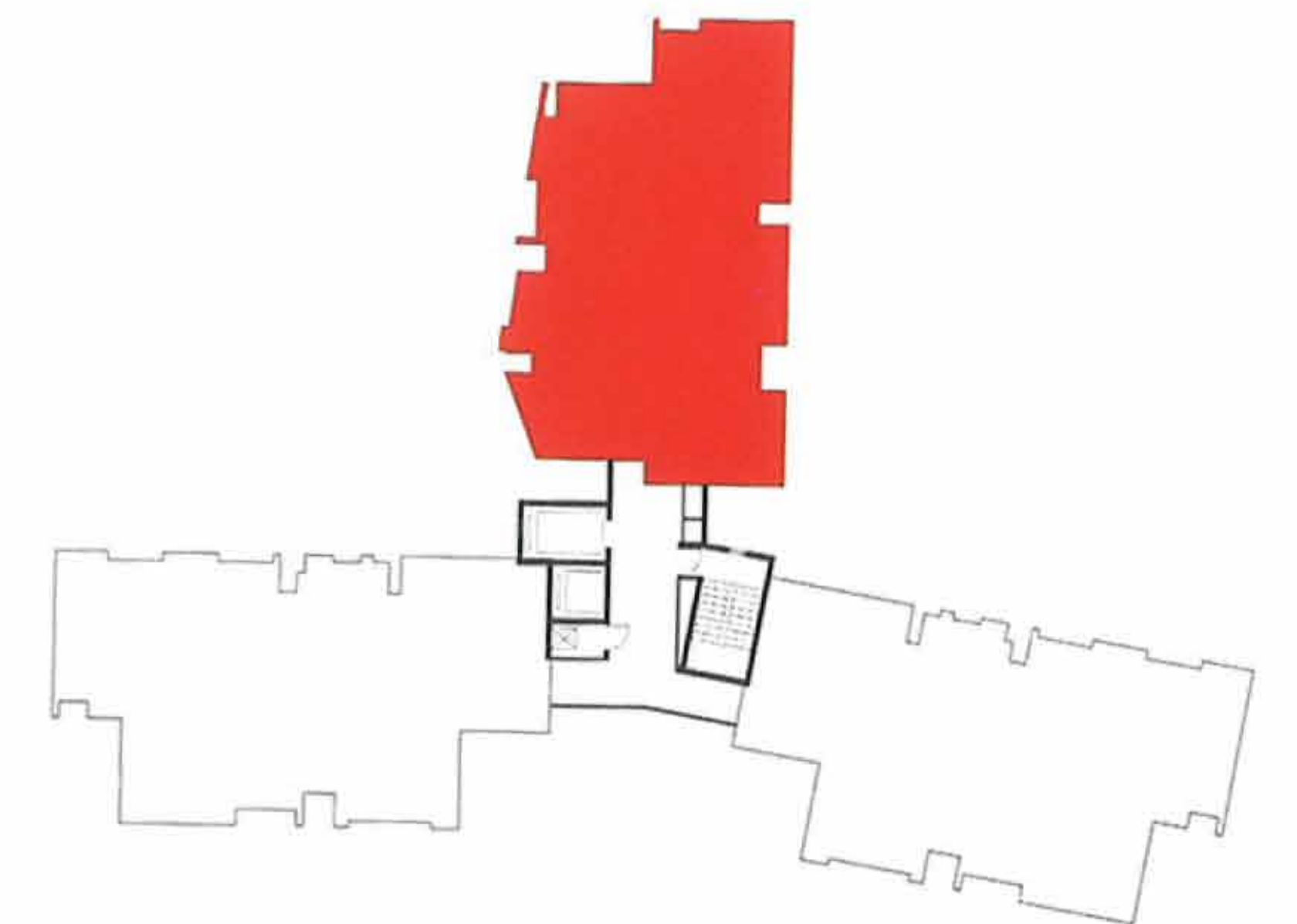
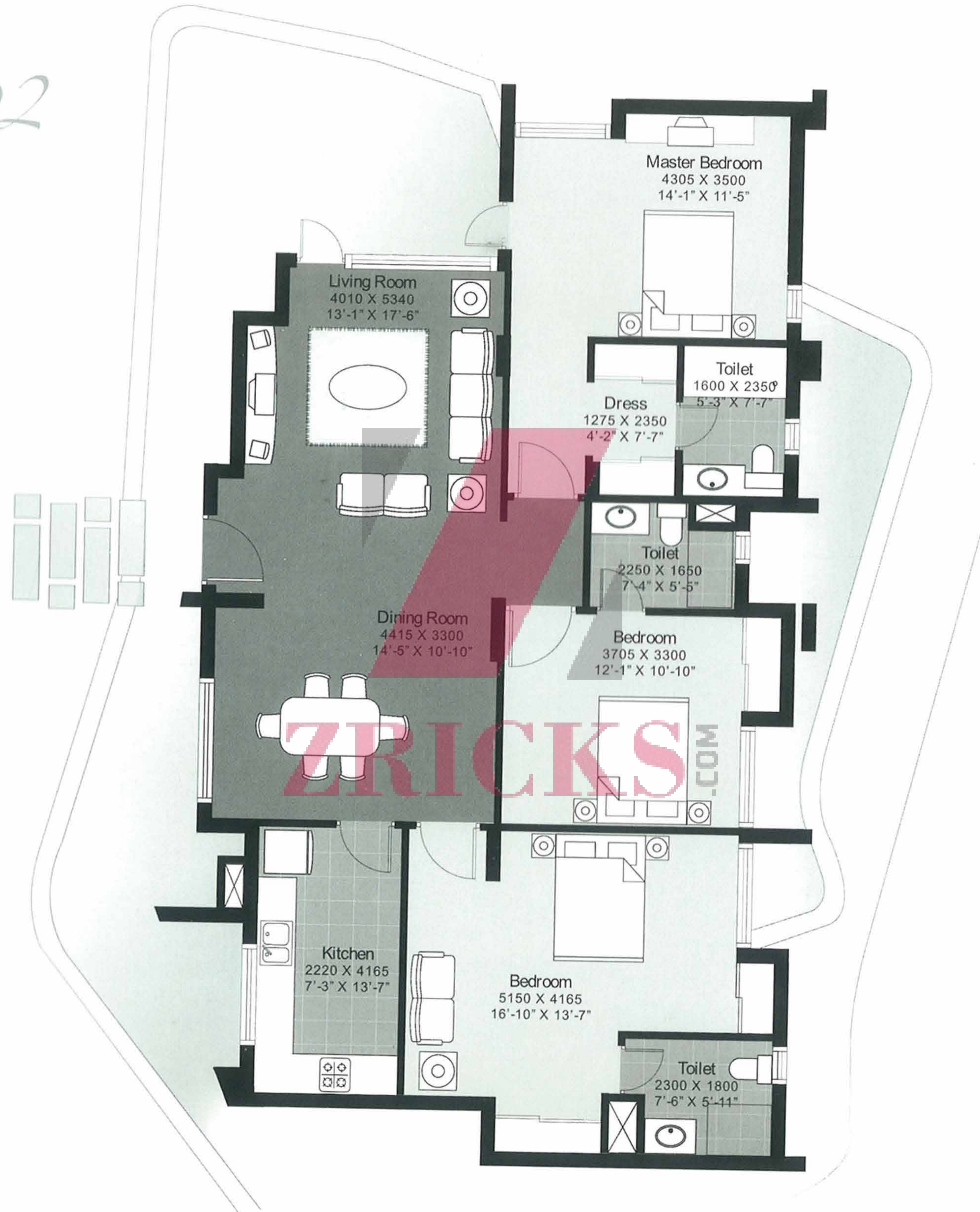
- Tower T1 - 603-1103
- Tower T2 - 603-1103
- Tower T3 - 503-903, 1603-1803
- Tower T4 - 503-1003
- Tower T5 - 703-1203°
- Tower T6 - 903-1503°

°Flipped floor plan of the shown image.

Type B²

(3 BR)

1701 sq.ft. (158.08 sq.m.)



Tower T2 - G03

Tower T5 - G03°

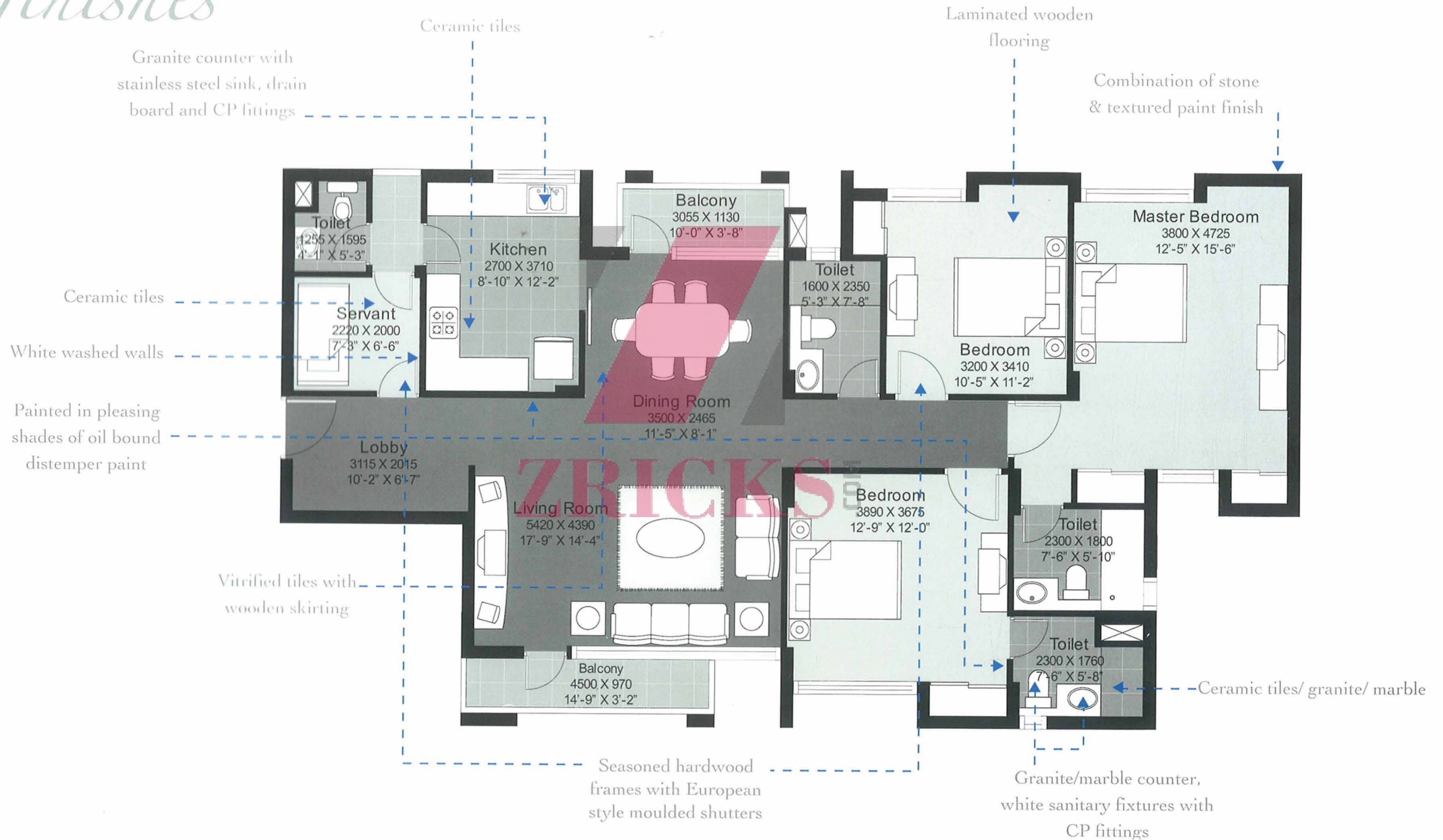
°Flipped floor plan of the shown image.

Raising



Earthquake-resistant construction, rain-water harvesting, absolute power backup makes Unitech Heights a dreamhouse. A well appointed club complements you with an impressive list of activities, including your lifetime wish of swimming in a pool.

finishes



Down to Earth

Specifications

Wall finish

Internal - Living/dining : Painted in pleasing shades of oil bound distemper paint

Servant room : White washed walls

External : Combination of stone & textured paint finish

Floorings

Living/dining : Vitrified tiles with wooden skirting

Bedrooms : Laminated wooden flooring

Servant's room : Ceramic tiles

Kitchen

Flooring : Ceramic tiles

Dado : Ceramic tiles above working platform, rest is oil bound distemper paint

Platform : Granite counter with stainless steel sink, drain board and CP fittings

Toilets

Dado : Select ceramic tiles up to 7 ft. high

Flooring : Ceramic tiles/ granite/ marble

Fittings : Granite/marble counter, white sanitary fixtures with CP fittings

Internal Doors

Seasoned hardwood frames with European style moulded shutters

Electrical

Conduit copper electrical wiring for all light and power points

facilities

100% power back up • 24 x 7 security **Green area:** Water bodies • Kids play areas • Jogging and walking tracks • Sitting areas • Multi purpose lawn • Main event lawn **Building:** Sufficient car parking facility per apartment • Earthquake resistant RCC framed construction **Club:** Swimming pool • Fitness Centre • Children's play room • Multi purpose hall

Note: Perspective view, floor plans, finishes, specifications, facilities and amenities are tentative in nature and are subject to revision without prior notice.

ZRICKS.COM