



**ADD  
NEWER  
HUES TO  
YOUR LIFE**



**WELCOME TO THE WORLD OF MYRIAD HUES**



**ZRICKS**.COM

Cherished dreams, blissful mornings, laughter and memories. Shades of bliss overwhelm your shine. Every hue comes with its cue. Where violet brings happiness, indigo brings wealth. Where blue brings health, green brings prosperity. Yellow brings luxury while red brings love. Hues can bring out the best in you. Own a home to celebrate life in the best of its colours. Myriad hues are here for you.



# WELCOME TO A WORLD OF 70 ACRES

As far as the eye can reach, bright and vibrant spaces is all you will see. Heart and life fill your space, while every corner will bring you pride. Rays of yellow fill your home while sleek contours rival the shiny skyline. The breathtaking interiors fill you red to your heart's brim, the spectacular designs with fill you with purple pride. Our world is a marvel for you to see, hues that you will experience, every day, differently.

Disclaimer: The image used here is for representative purpose only and is subject to changes by the company or competent authorities.



## WELCOME TO A WORLD OF 85% LUSH GREENS

Is it rare to find every shade of green in the midst of the city? Green is in our roots, every shade for your mood to suit. Every second brings new life and new beginnings. It's as if the world is dressed in a green gown, decorated in flowers of every colour under the sun. With leafy hair blowing in the wind and trees reaching the sun. An arch of the brightest hues taint your day.



## EXCELLENCE IN ARCHITECTURE

Every corner shining radiant and bright, our designs are crafted by the versatile, biggest name in global architecture – Aedas, Singapore. Entirely conceptualized by this global brand, brighter hues accompany you as the days brew. Come to life. A prized possession is here for you.

# Aedas



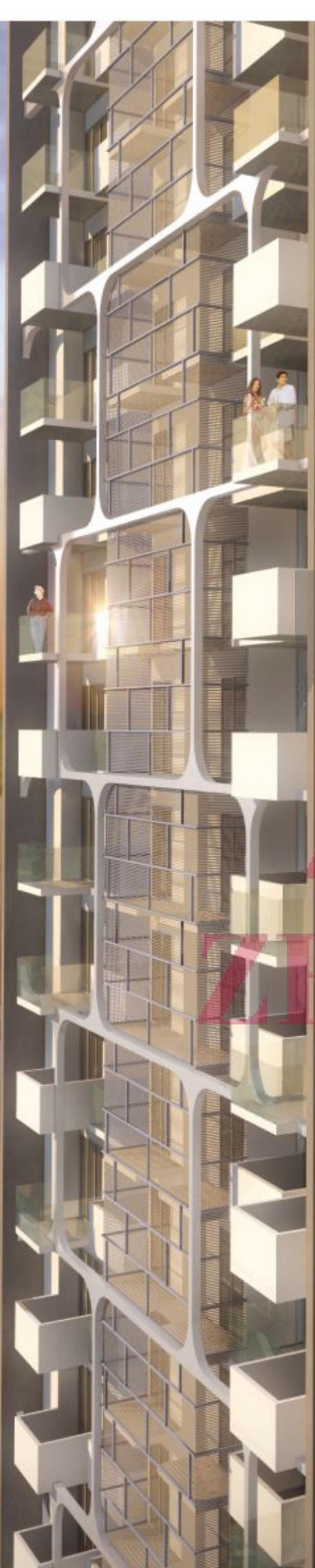
Disclaimer: The image used here is for representative purpose only and is subject to changes by the company or competent authorities.

supertech   
**Hues**  
premium living at sector 68, Gurgaon

Welcome to a wonderful place that's awash with vivid colors, alive with vibrant life, enjoys an enviable location and which makes the myriad hues of your life come alive. Come over; be reborn.

Introducing Supertech Hues at the posh Sector 68 of Gurgaon. Premium 2/3/4 BHK residences, right in the heart of the Millennium City. Graced with every modern amenity ever envisaged by mankind and beautifully surrounded by lush greens. Crafted with just you in mind.





Disclaimer: The image used here is for representative purpose only and is subject to changes by the company or competent authorities.



## DOUBLE HEIGHT ENTRANCE LOBBY

Welcome to a whole world of inconceivable magnificence; right from the moment you enter the lobby. A spectacular waiting lounge, state-of-the-art high speed elevators and elegant sitting spaces. Here, luxury resides at every corner.







## GET A SPECTACULAR PANORAMIC VIEW

How better to spend your time than sipping your morning coffee in your balcony as you watch the morning rise over the horizon or cherishing a blissful evening at picturesque sunset over an evening of entertainment? Go on, let the world unfold before your eyes at the larger than life balconies at Supertech Hues. With a stunning panoramic perspective, each balcony boasts of a wide expanse, accessed by sliding/folding doorways from the main living space.





## 3 SIDE OPEN HOMES

Where, from every corner, you can see Mother Nature smiling at you. Where every nook & cranny pays homage to the Sun God. Here, your view of the lush greens is never restricted and there is a continuous flow of air and sunlight inside.





## PALATIAL FREEDOM OF LIVING

Supertech Hues has all that it takes to give you a peaceful life. Talk about breathing space and it offers you spaces that will take your breath away. What's more, the ultra spacious homes with high ceilings & huge balconies lend you the privacy & freedom that you always desired. The well managed spaces make the homes look bigger and better in every sense.



Spacious Apartments



## LUXURIOUS SPECIFICATIONS

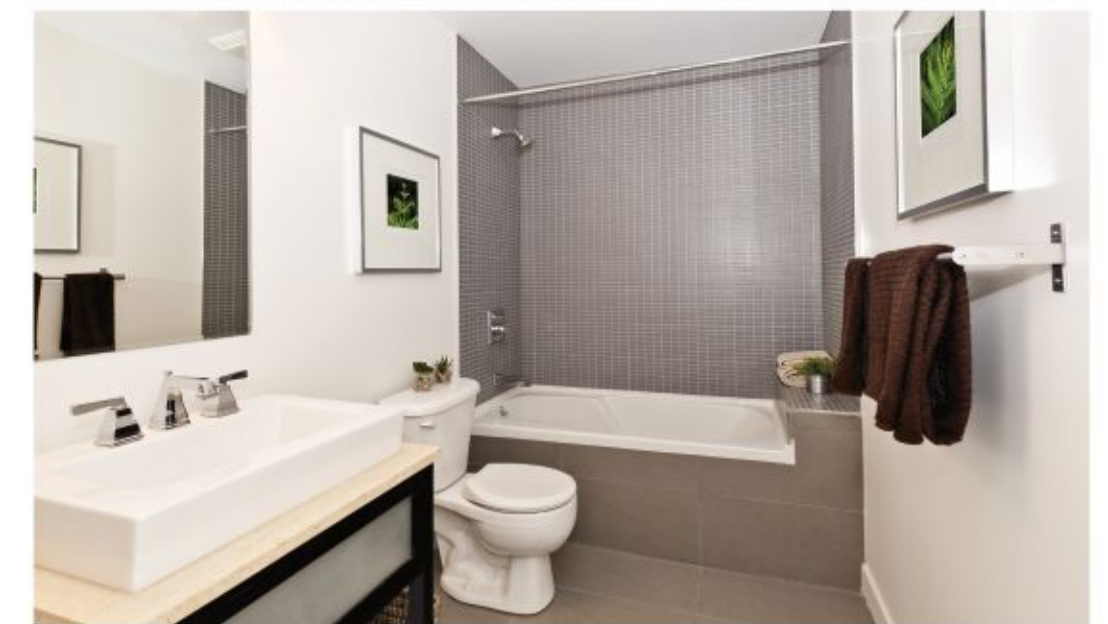
At Supertech Hues, if the exteriors display spellbinding shades, the interiors showcase tones of unexpected splendor. Tastefully done spaces, ultra-rich furnishings, classy décor and more; the interiors at Supertech Hues cast a magnificent, vibrant spell.





## MODULAR STYLES

Our modular kitchens and washrooms bring to you different solutions to add linear style and functionality without comprising on vibrancy. Every detail is designed to enhance the quality of each room while giving you ample space. A combination of simple designs, elegant shapes and textured surfaces will serenade your senses. Stainless steel and popular green material will ensure hygiene, maintenance, water and pest resistance. Go ahead, unwind.





State-of-the-art Club House

## DISCOVER YOUR PARALLEL LIFE

Innumerable leisure facilities for a balanced lifestyle. Enjoy a tranquil jog at our customized jogging tracks or match your refined tastes at the well appointed clubhouse. Relax at the swimming pool or watch your little one enjoying at the dedicated kids clubhouse. Our recreation and entertainment centres have something for everybody.



Kids Club-house

Health Centre

Jogging Tracks



All convenient facilities and amenities in and around the project

## WE BOW TO YOUR EVERY NEED

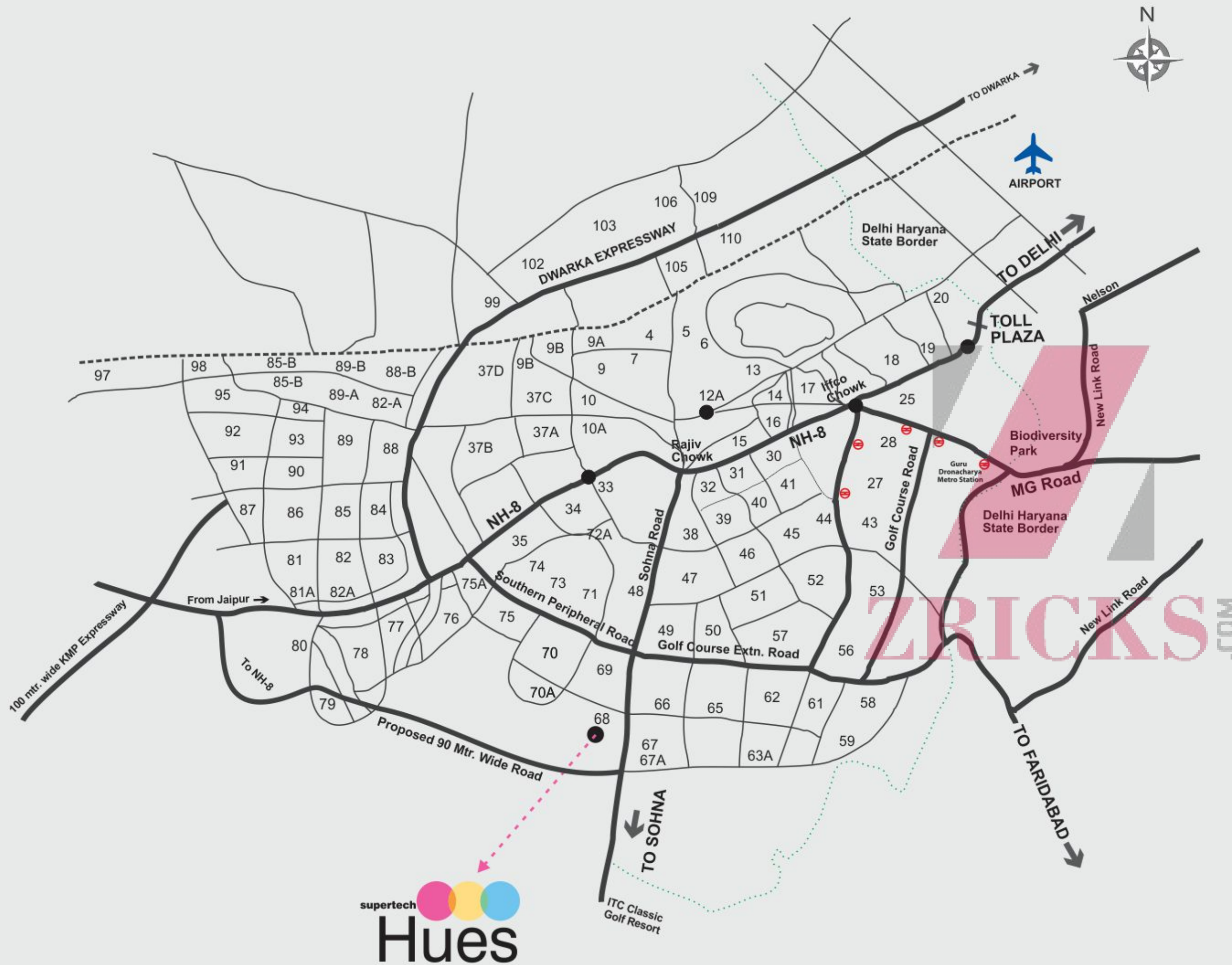
At Supertech Hues, be sure to be treated royal. Living in the heart of Gurgaon, close to everything that matters, protected by a gated community, complete with able body guards, night patrolling and the luxury of effortlessly parking at your two-level parking basement, life just cannot get better than this.



Ample Parking



Hi-end Security



MAP NOT TO SCALE

## STRATEGIC LOCATION

Here is a home nestled amidst greenery, yet close to all places of importance. Enjoys an exclusive privacy, yet is smoothly accessible. At Supertech Hues, the perfect location awaits you. One that is far from commotion, but is never far from life.



- Close to NH-8 & Southern Periphery Road (Golf Course Extension Road).
- Conveniently linked to all major Business Hubs, Retail destinations & Metro Station.
- Close to major hospitals like Medicity, Artemis and more.
- In close proximity to world-class educational institutions like Pathways and Goenka.



# SPECIFICATIONS



## Structure

Earthquake resistant RCC framed structure with external brick/block walls.



## Wall-finish

**Internal:** Internal walls in cement plaster with POP punning with plastic emulsion paint or texture finish.  
**External:** Combination of stone, tiles, Acrylic emulsion/ Texture paint.



## Flooring/wall Dado

**Drawing Room, Living, Dining:** Italian/ Spanish vitrified tiles or equivalent quality with designer patterns.  
**Bedrooms:** Vitrified tiles / High quality wooden laminate flooring.



## Study Room

Vitrified tiles / High quality wooden laminate flooring.



## Balcony

High quality anti skid ceramic tiles.

**Servant Room/study:** kitchen counter with high quality granite/ imported marble, floor and wall dado with high quality ceramic tiles.



## Toilets

Imported Beige Spanish tiles or equivalent flooring. Spanish tiles in walls till ceiling height for the master toilet. All other toilets will have high quality imported ceramic floor & wall tiles up to 7 ft. height, balance painted in acrylic emulsion paint.



## Kitchen

Imported fittings of Kohler or equivalent. Double bowl stainless steel sink with drain board. Designer/modular woodwork & fittings. Provisions for piped gas supply & R.O. system.



## Doors & Windows

**Main Entrance:** Elegantly designed and finished 8 feet high entrance door with polished hardwood frame having European style moulded shutter with high quality imported/Indian hardware fittings.

**Internal Doors:** Seasoned hardwood frame with European style moulded shutters.

**Windows:** Branded UPVC windows.



## Toilets

Premium quality imported sanitary/ high class wall hung W.C. and washbasin in matching shades/colors. Single lever C.P. Fittings Kohler/ Jaquar or equivalent. All the toilets will include exhaust fan, mirror, towel rack, rod & ring accessories. Master toilet will have glazed shower enclosure.



## Others

Branded split air conditioners in the master bedroom & living room. Modular wardrobes/cupboards in all the bedrooms.



## Electricals

Modular range switches/sockets (Legrand or Equivalent)/MCBs, copper wiring. Two wall light fixtures in each of living, dining, lobby and bedrooms area.



## Power Back-up

100% power back-up for every apartment.



## Communication

TV and telephone points, EPABX and video door phone.



## Security

Secured gated community with access control at entrances with Automatic boom barriers and manual gates at entry and exits of the development. CCTV in basements, ground floor lobbies and main entrance lobby for surveillance. EPABX system linked to each unit. Access control cards and video door phone for each apartment.





**ADD  
NEWER  
HUES TO  
YOUR LIFE**

### TOWER LEGENDS

 2 BHK + 2 Toilet Tower

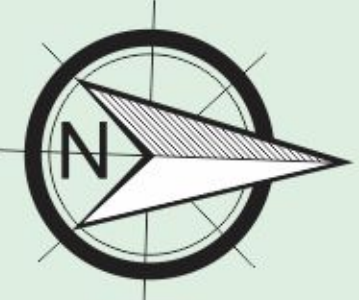
 2 BHK + Study Room Tower

 3 BHK + 3 Toilet Tower



## FORM AND FUNCTION IN PERFECT HARMONY

Each home has been considerably designed for optimum comfort, convenience and style. Our architects have ensure that light and space are maximized to create exceptional living areas with access to the best of amenities and lifestyle. Balconies of the homes provide vantage points to give you a panoramic view of the outside. homes like ours are truly a benchmark for innovation.



## SITE PLAN

# WELCOME TO A WORLD OF 70 ACRES

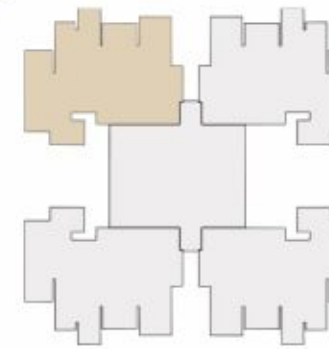
As far as the eye can reach, bright and vibrant spaces is all you will see. Heart and life fill your space, while every corner will bring you pride. Rays of yellow fill your home while sleek contours rival the shiny skyline. The breathtaking interiors fill you red to your heart's brim, the spectacular designs with fill you with purple pride. Our world is a marvel for you to see, hues that you will experience, every day, differently.



supertech  
**Hues**  
premium living at sector 68, Gurgaon

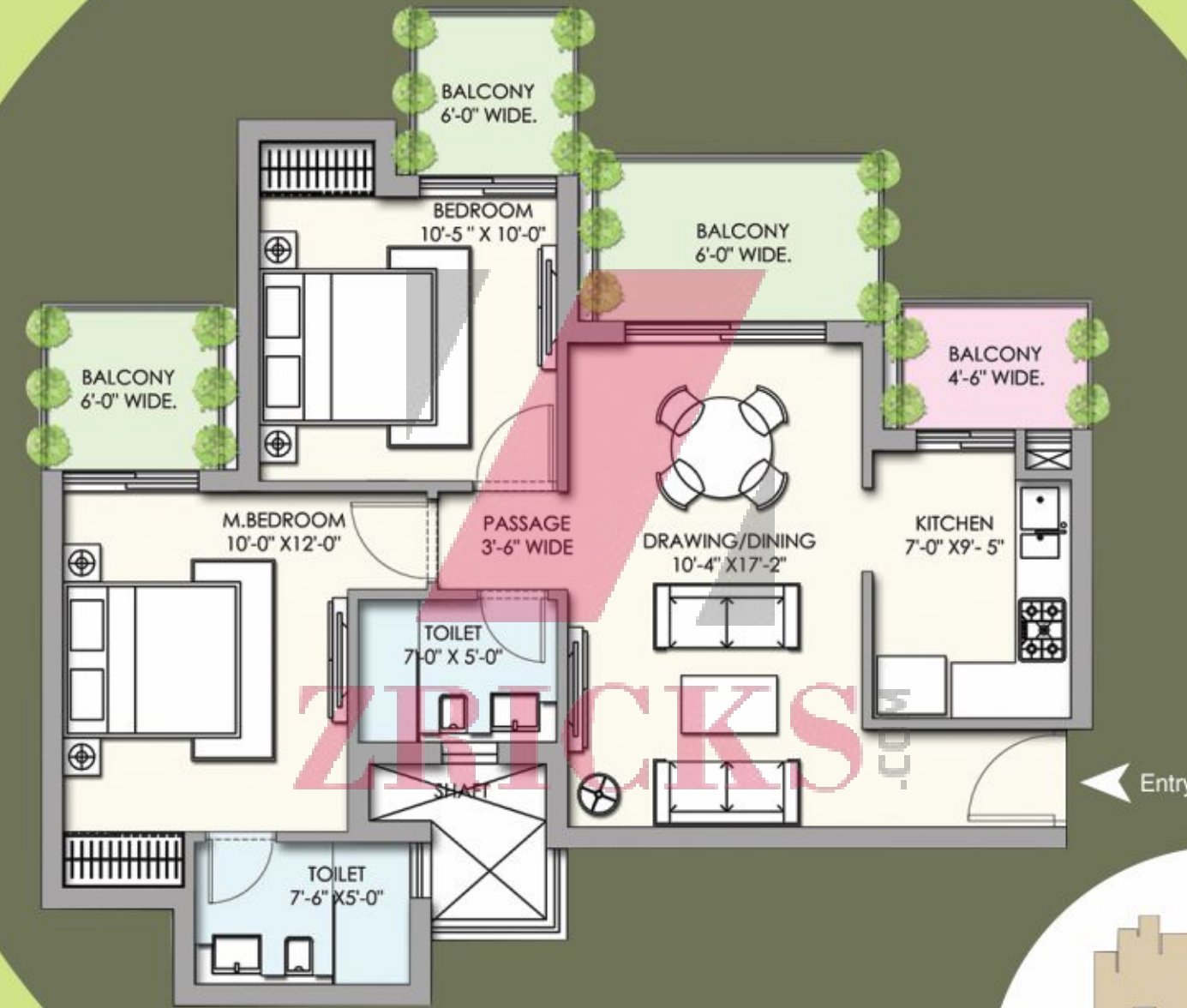


Super Area: 1430 sq.ft.  
2 BHK + 2 Toilets + Study Room

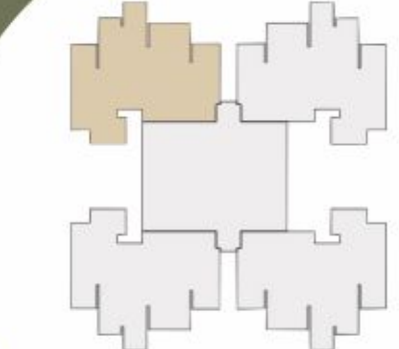


Cluster Plan

**FLOOR PLAN**

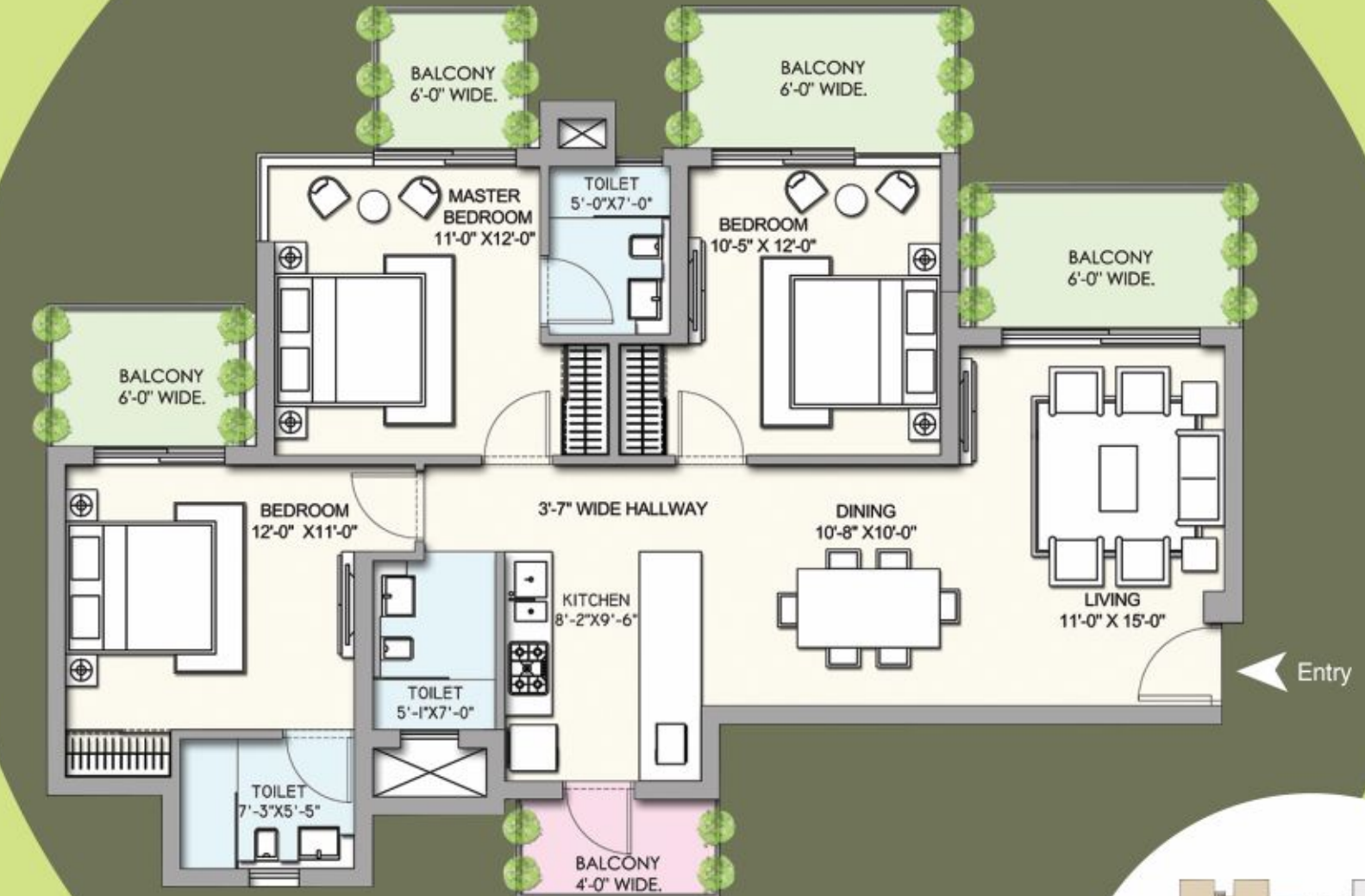


Super Area: 1180 sq.ft.  
2 BHK + 2 Toilets

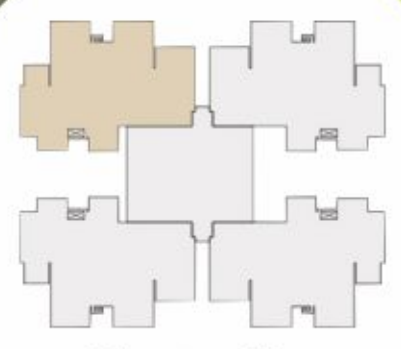


Cluster Plan

**FLOOR PLAN**



Super Area: 1765 sq.ft.  
3 BHK + 3 Toilets



Cluster Plan

**FLOOR PLAN**