



*Success  
Finds  
Inspiration*



Life's been good to you. Your dreams  
of the past are your reality today.

The powers that be make up your

inner circle. It's time for the world to  
know that you've arrived. That your  
time is now, and the future belongs  
to you.

U N N E N V O E T R I C G E O D

PULL





# G R E A T M I N D S M E E T H E R E

History has been the product of collaborations. Art, philosophy, science and culture have leaped forward when the right minds came together. The same is true for homes as well. BPTP is collaborating with IPE Cavalli, the Italian design gurus to bring you homes you truly deserve.





V I L L A S







# IPE CAVALLI FURNISHINGS

Italy - the homeland of art, the cradle of creativity and the heart of innovative designing, in 1959, marked the journey of IPE Cavalli which today is one of the most recognized and revered design houses in the world. Creating luxury products that reflect innovation and grandeur has been the inspiration behind their designs since their inception. Trailblazers in their work, they were early to adopt Polyurethane for their first design-furnishing object called Kosmo and designer seats for Lancia cars, to show the world a new way to create designer products. IPE philosophy wishes to promote "Life Styles" free and far from impositions or rigid laws with their creations that bring together technology with furniture and architecture to evoke the best of emotions.







# LIVE THE MOVEMENT

Welcome to the world of BPTP. One where monotony is an evil and the everyday leads to experiences both new and surprising. Where routines are meant to be broken and anything is possible. If you're looking to change the way you look at life, then come join the BPTP family, come join the culture movement.











# EXCLUSIVITY COMES HOME

Imagine a space which truly reflects everything you've achieved in life, a testimonial to who you are, and an introduction to the real you. Well, imagine no more. BPTP brings you Visionnaire, a range of exclusive villas designed by IPE Cavalli, tastefully crafted to be worthy of you.







# LEAVE THE URBAN SPRAWL BEHIND

Nestled in the midst of the Aravallis are Visionnaire Villas – an oasis of luxury. Built around exquisitely landscaped greens, this integrated secured township offers every urban amenity. Carefully created to give you the peace and quiet you need at the end of the day.













# VILLA CAPITAL

## 50 ACRES OF EXCLUSIVE LIFESTYLE

Find your share of exclusivity within the 50 acre gated villa capital. These future-ready masterpieces are built along the globally renowned concept of cluster living to give you a life well above the ordinary. Because when you're at ease, every moment becomes a world of wondrous possibilities.

Artistic Impression

[www.Zricks.com](http://www.Zricks.com)









# MAKE YOUR STATEMENT

There are some people who don't have get together, they host events. The who's who form their inner circle, and a party of four can change economic realities. People like you. And your success is our inspiration for creating one of a kind living spaces that announce your status, even though you won't.









# WHEN POWER NEEDS A BREAK

There are days which never end. When power lunches lead to boardrooms and all you want is to escape, no matter what the view. For the days when coming home is like a getaway, we've created sleeping areas that will invite you to lie back, close your eyes and recharge.





# DISCOVER TRANQUILITY

Whether it's a weekend with the family or just a little quiet time by yourself, it's all waiting at our exclusive members only luxury club. Take a refreshing dip in the pool, unwind with an expert massage and discover international cuisine, all in your Sanctuary.





SANCTUARY

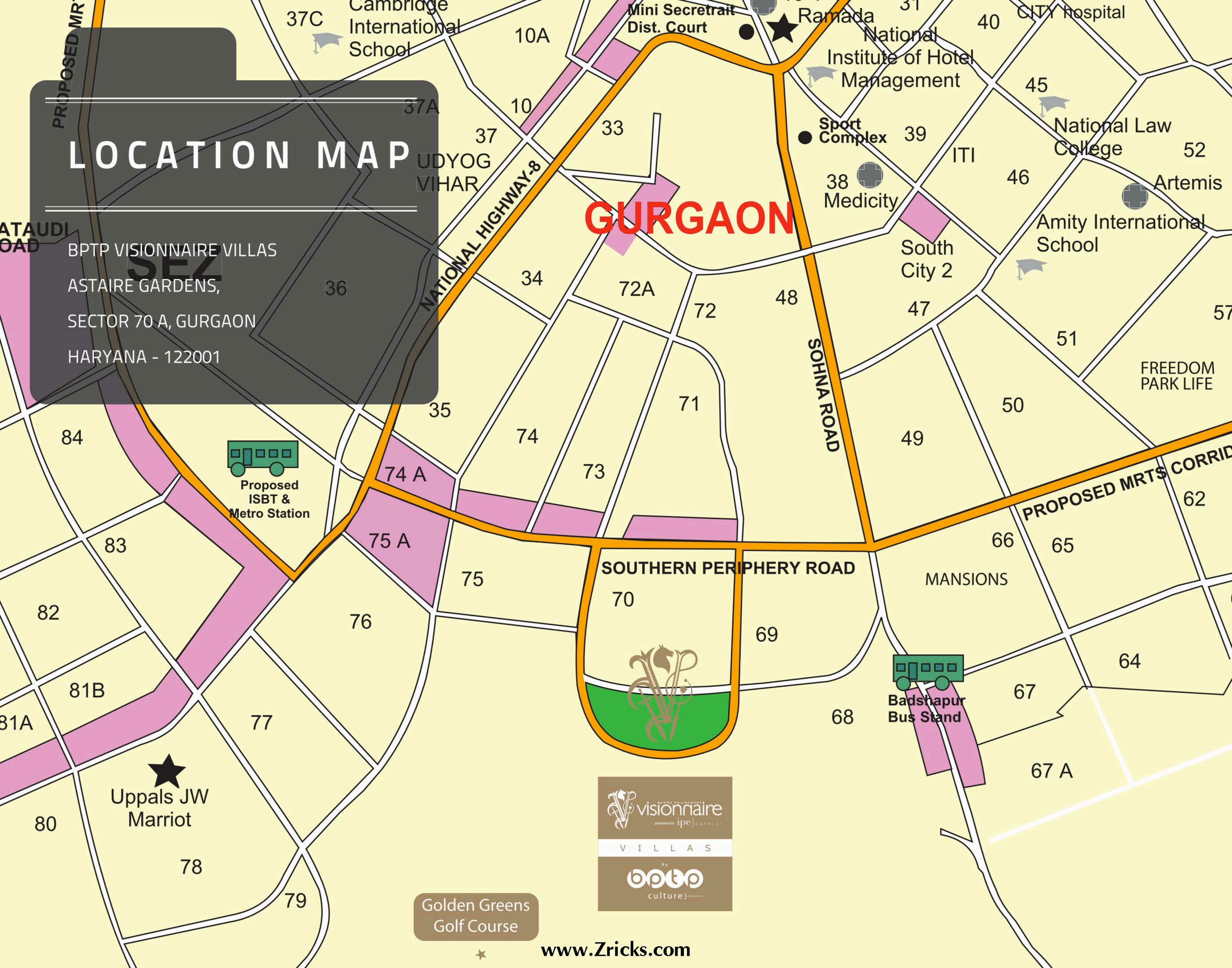
[www.Zricks.com](http://www.Zricks.com)



# LOCATION MAP

BPTP VISIONNAIRE VILLAS  
ASTAIRE GARDENS,  
SECTOR 70 A, GURGAON  
HARYANA - 122001

## GURGAON



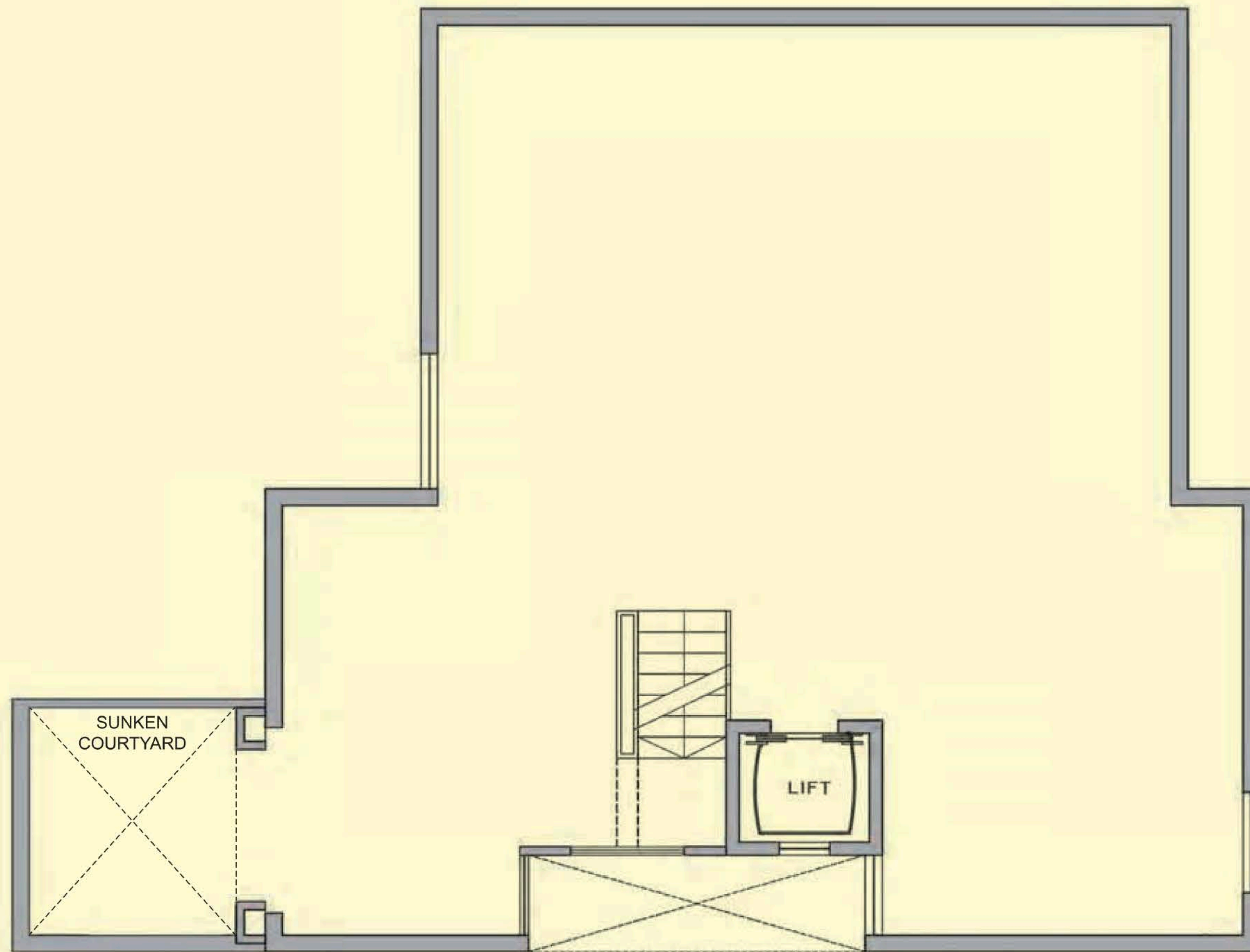
Golden Greens  
Golf Course

[www.Zricks.com](http://www.Zricks.com)



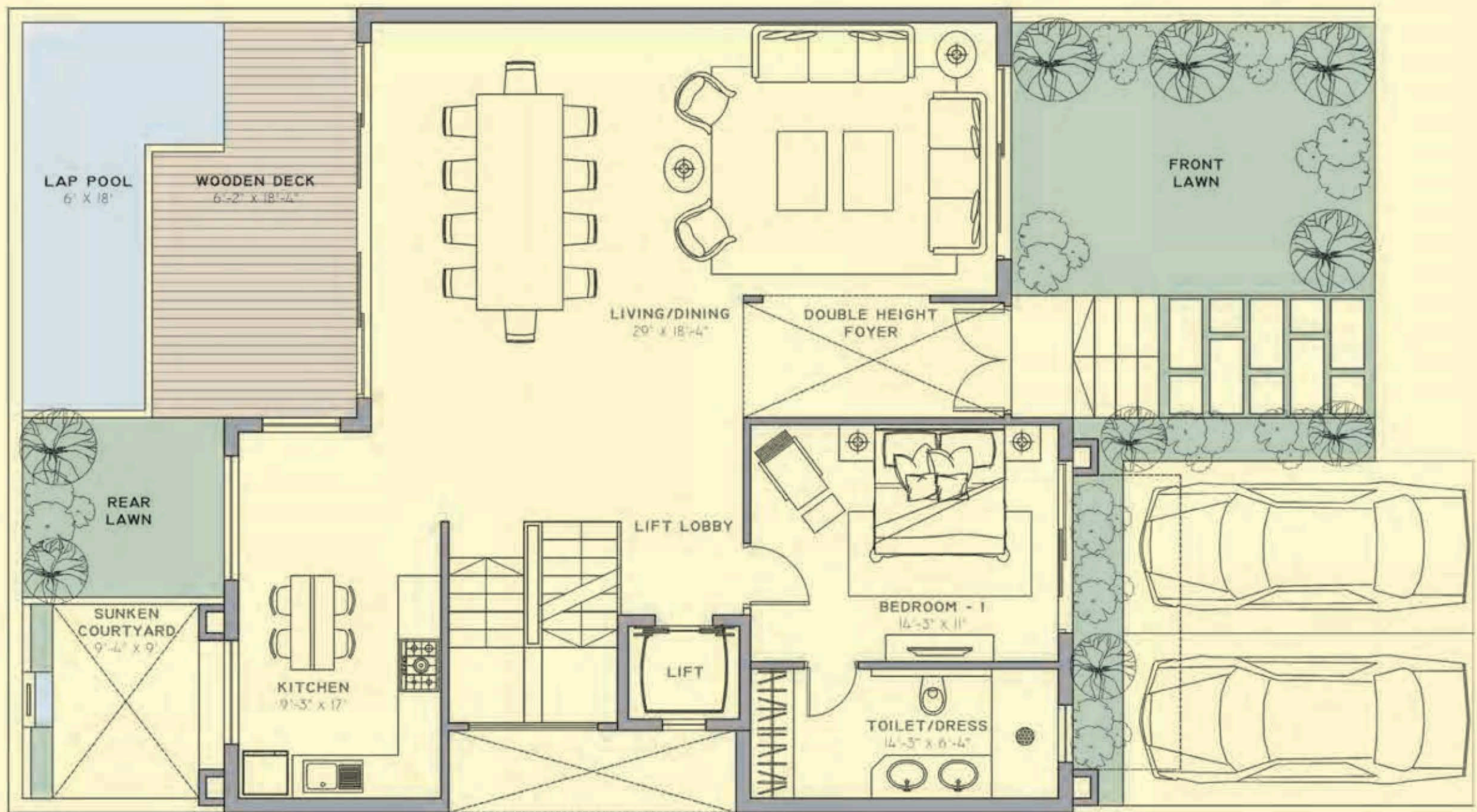
# FLOOR PLAN

SIZE: 209.03 SQ. MTS. (250 SQ. YDS.)



BASEMENT



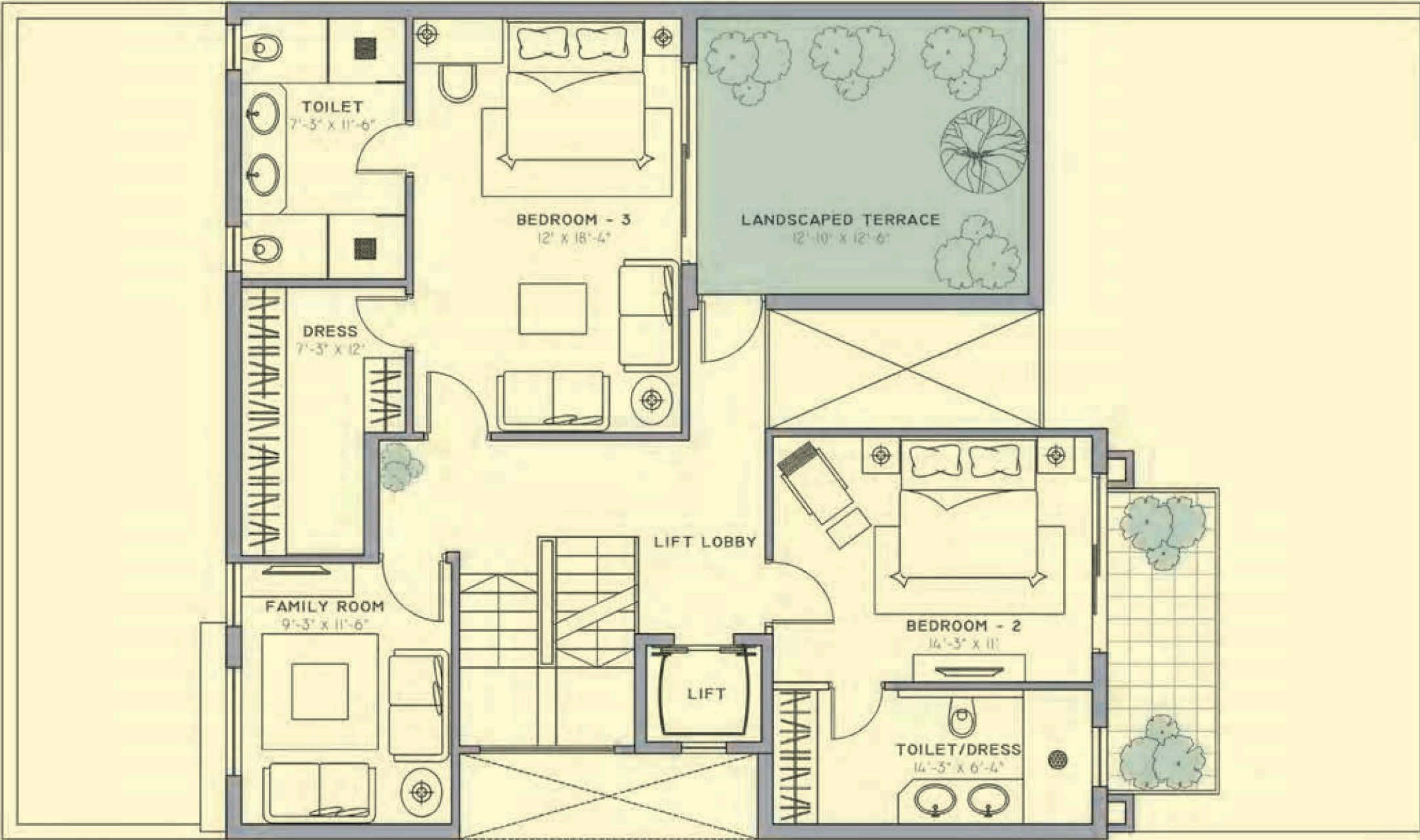


GROUND FLOOR



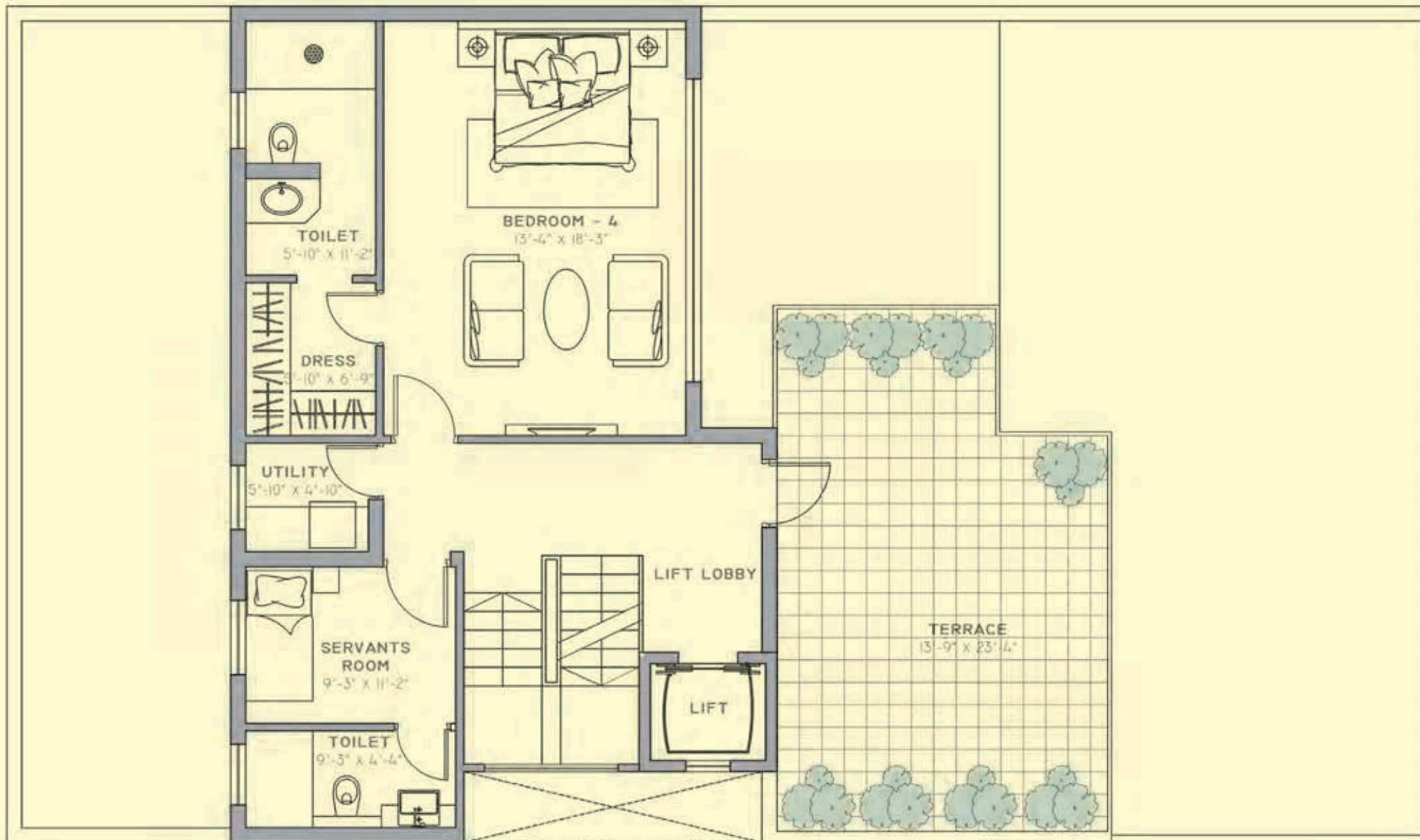
# FLOOR PLAN

SIZE: 209.03 SQ. MTS. (250 SQ. YDS.)



FIRST FLOOR



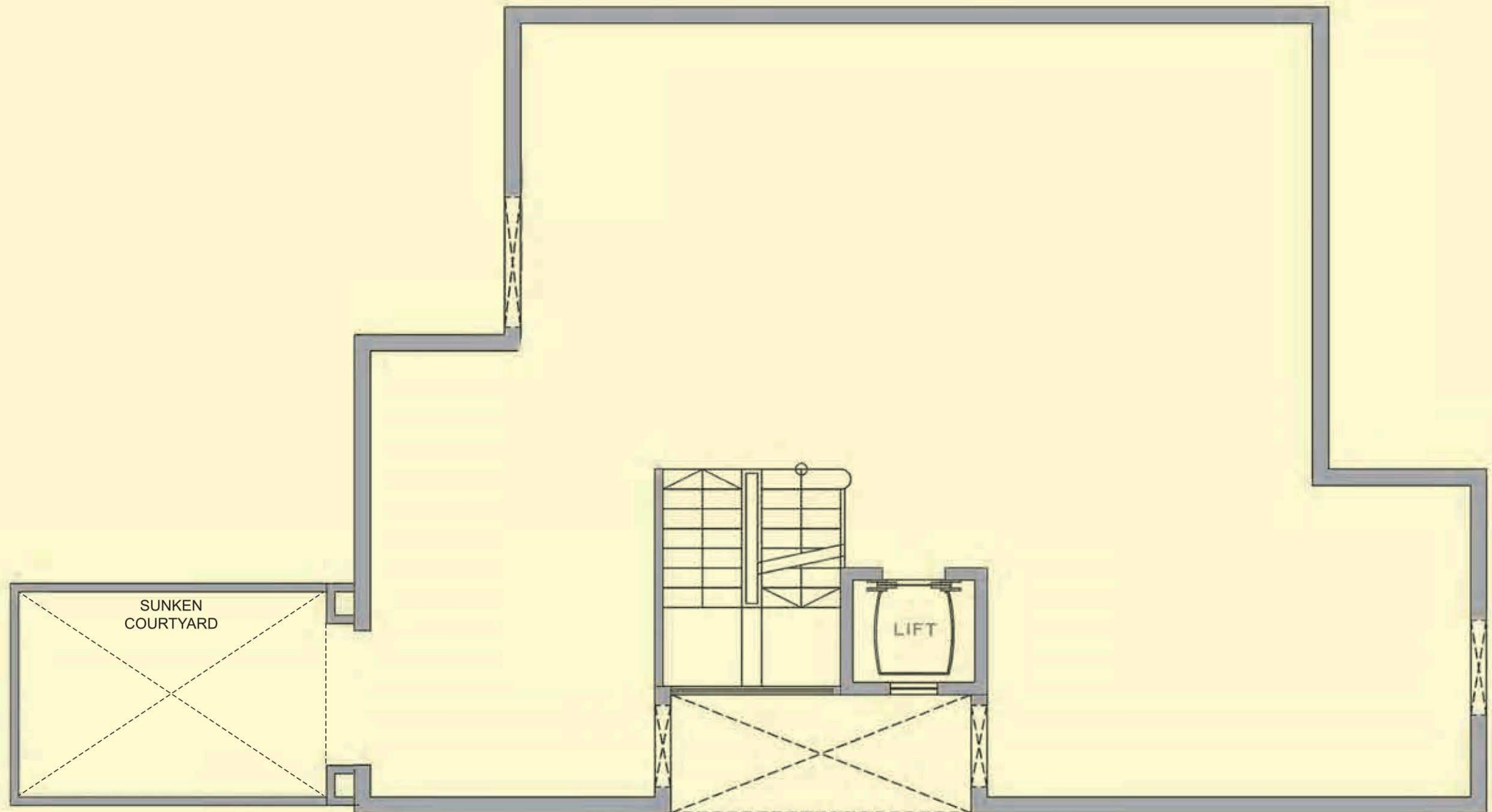


SECOND FLOOR



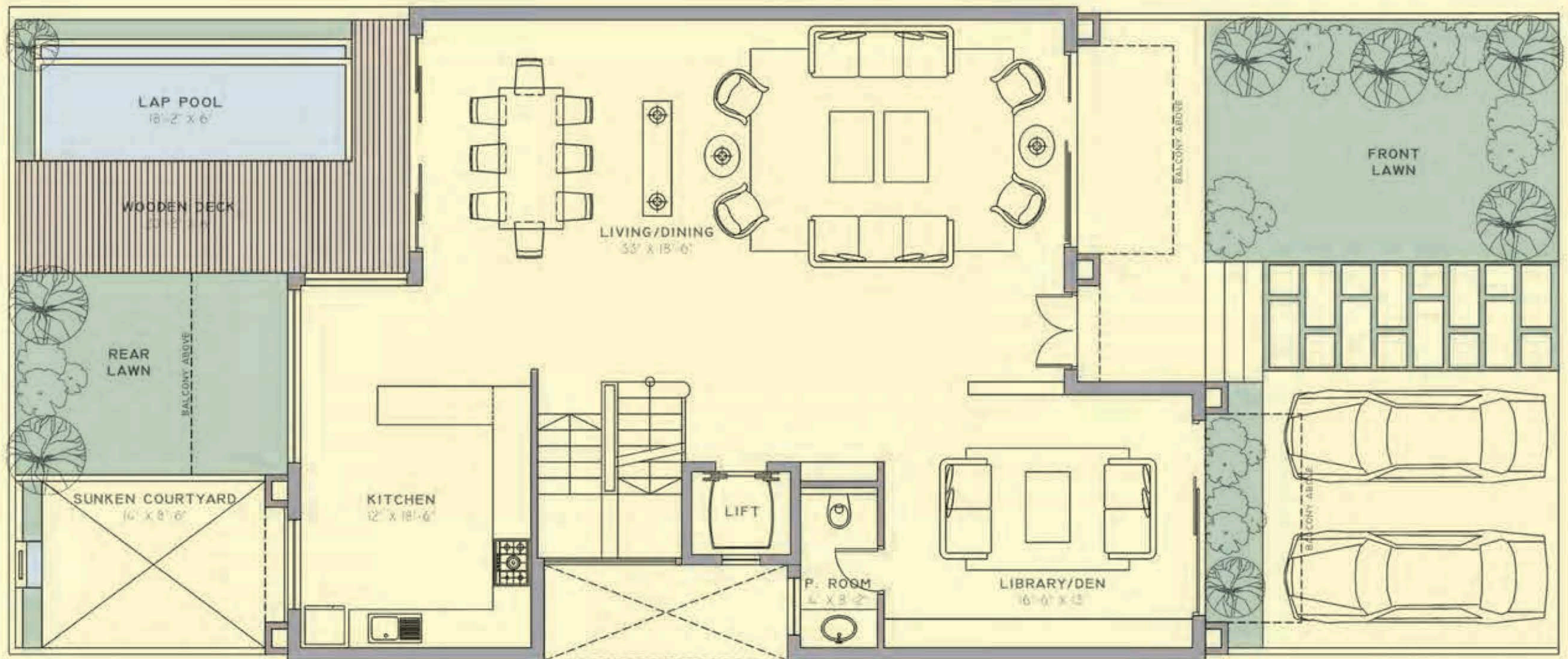
# FLOOR PLAN

SIZE: 242.48 SQ. MTS. (290 SQ. YDS.)



BASEMENT



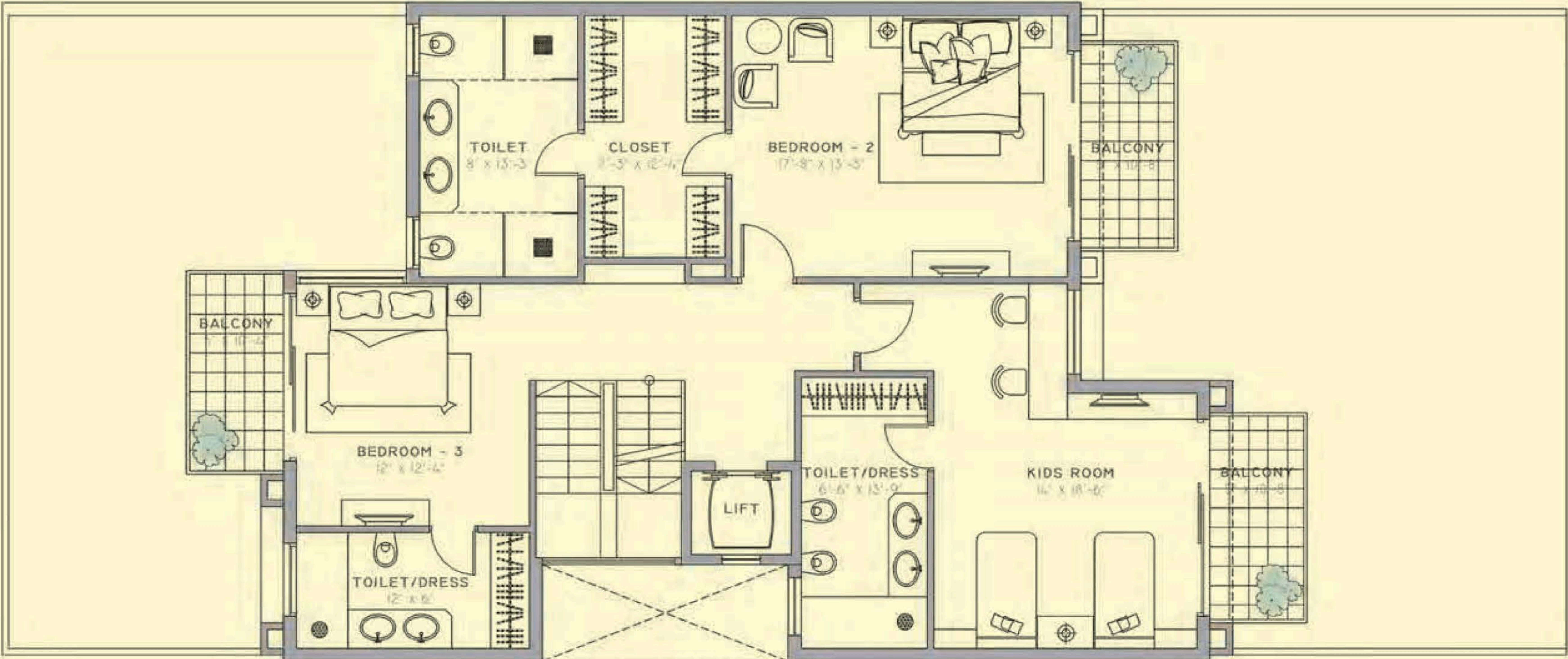


GROUND FLOOR



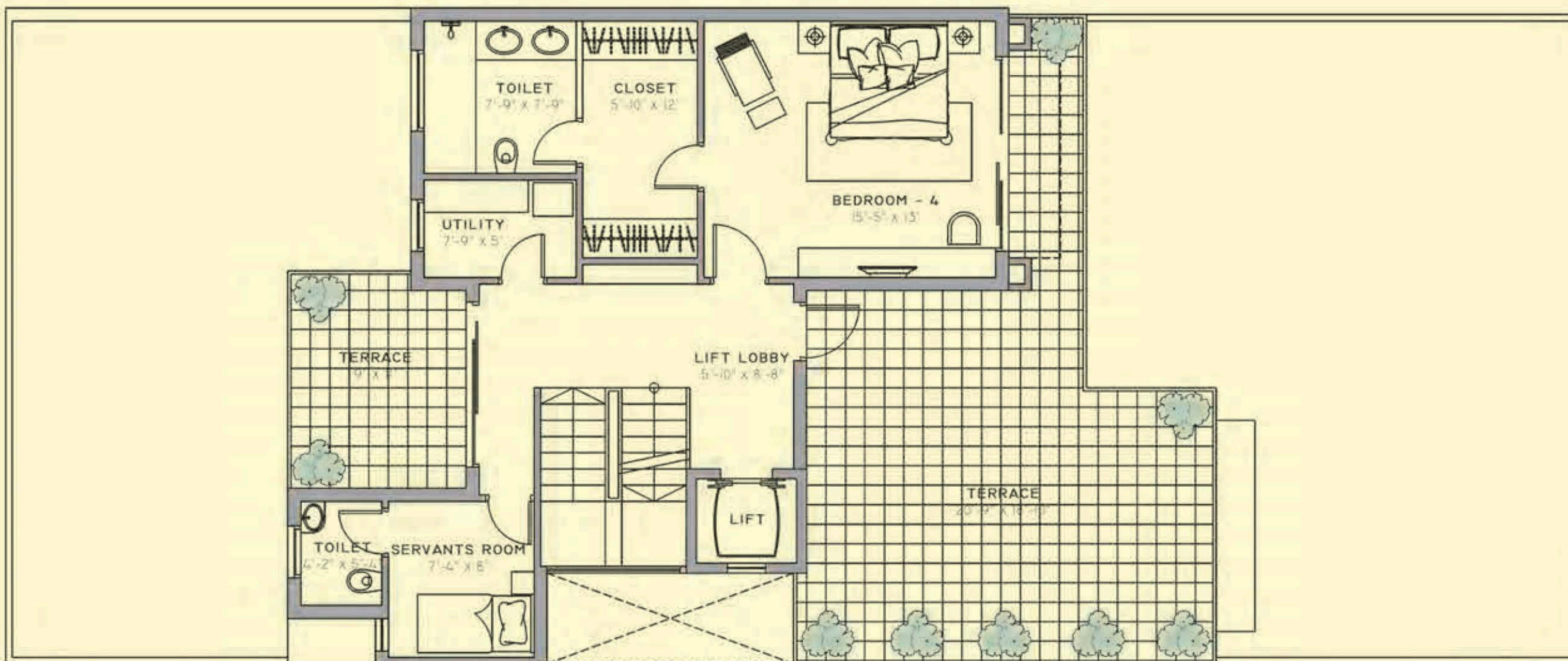
# FLOOR PLAN

SIZE: 242.48 SQ. MTS. (290 SQ. YDS.)



FIRST FLOOR



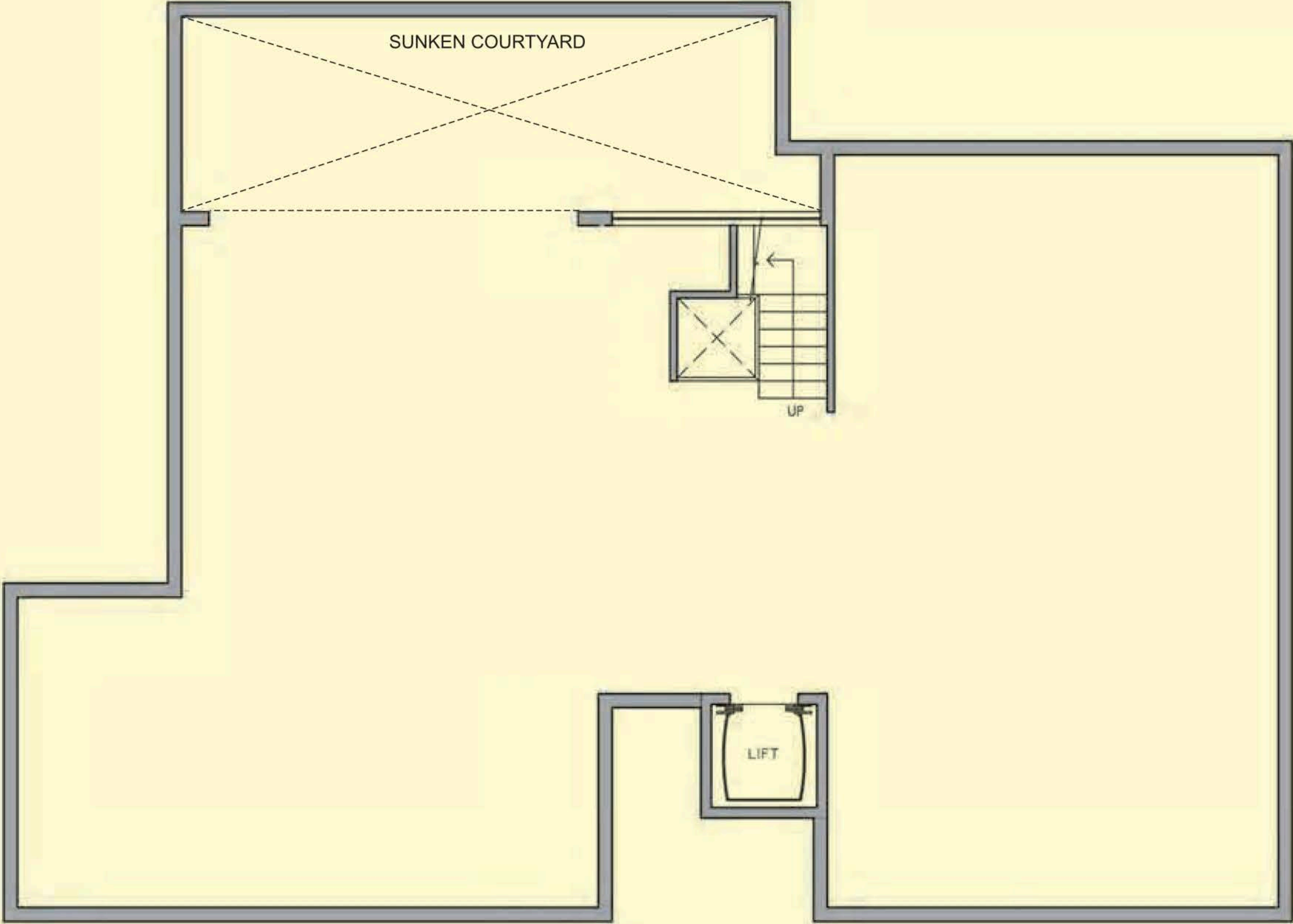


SECOND FLOOR



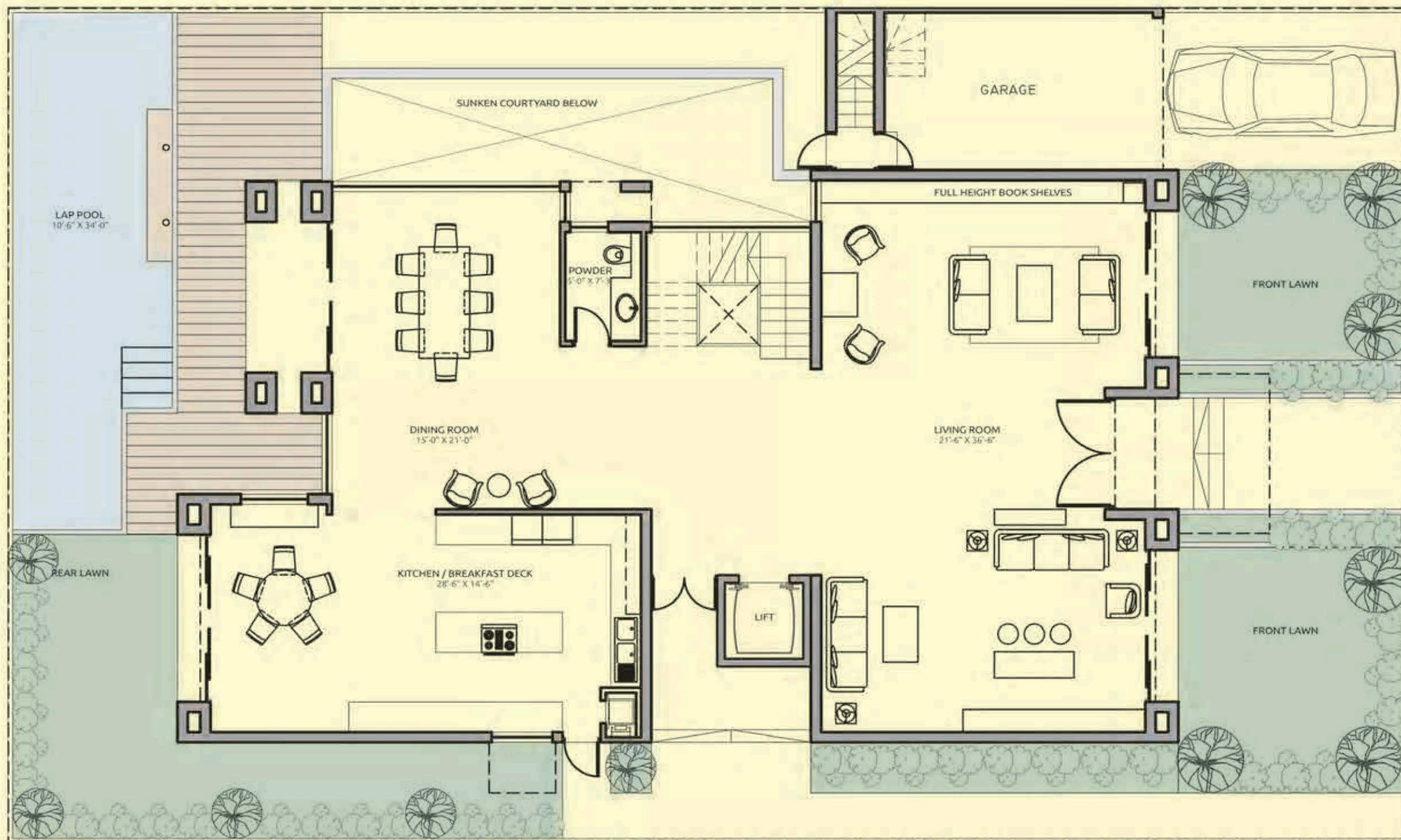
# FLOOR PLAN

SIZE: 455.69 SO. MTS. (545 SO. YDS.)



BASEMENT FLOOR



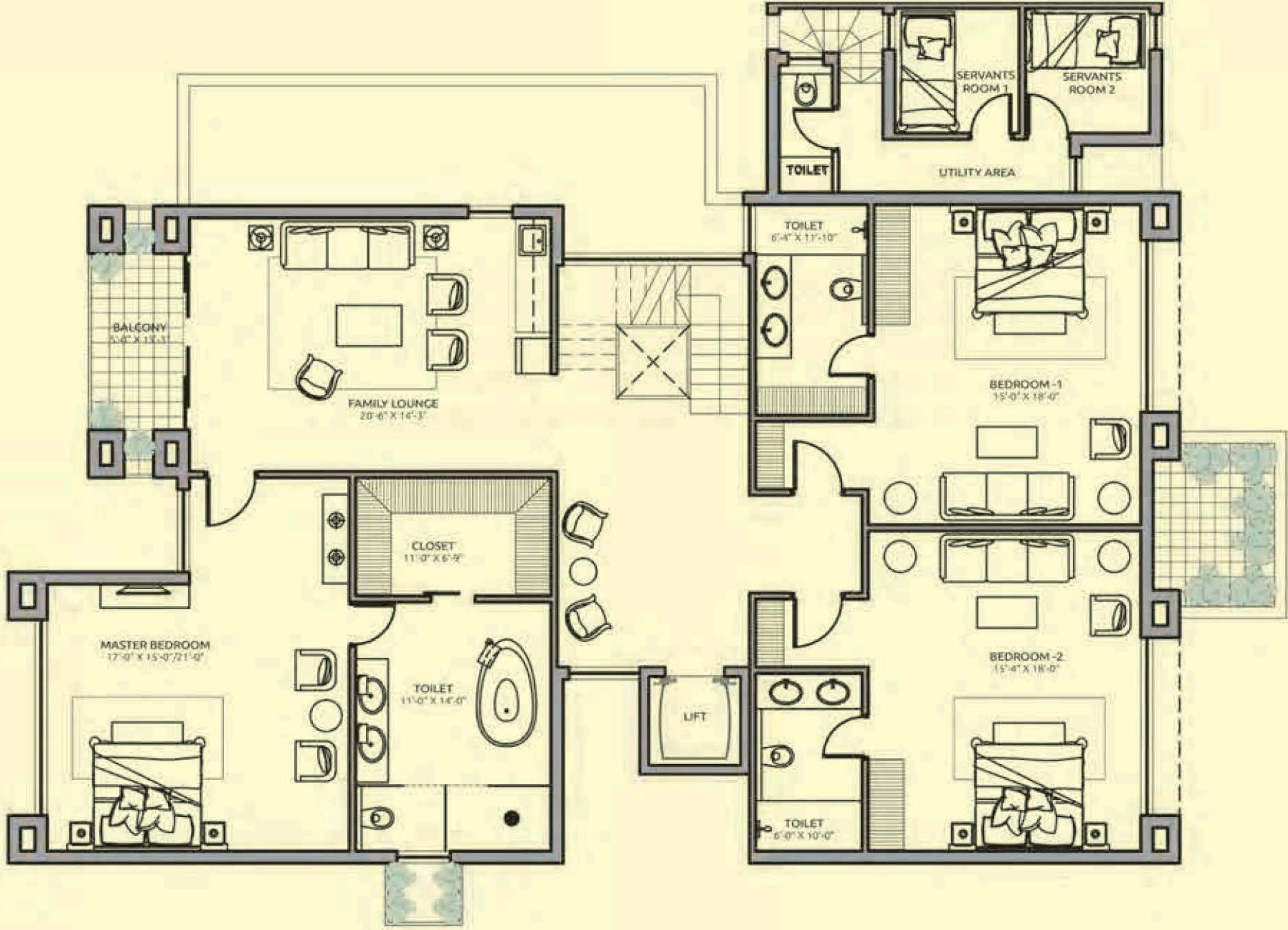


GROUND FLOOR



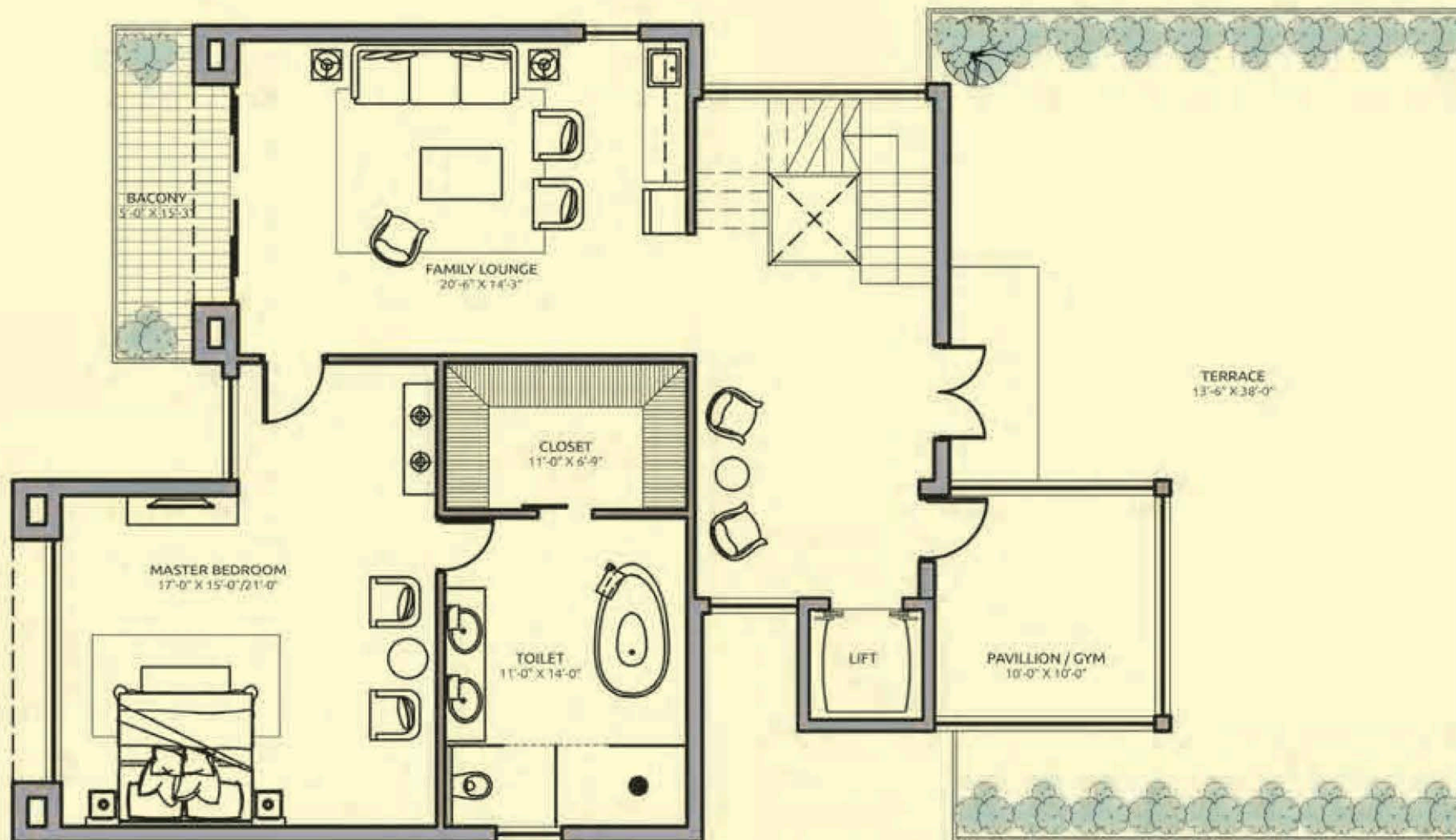
# FLOOR PLAN

SIZE: 455.69 SQ. MTS. (545 SQ. YDS.)



FIRST FLOOR



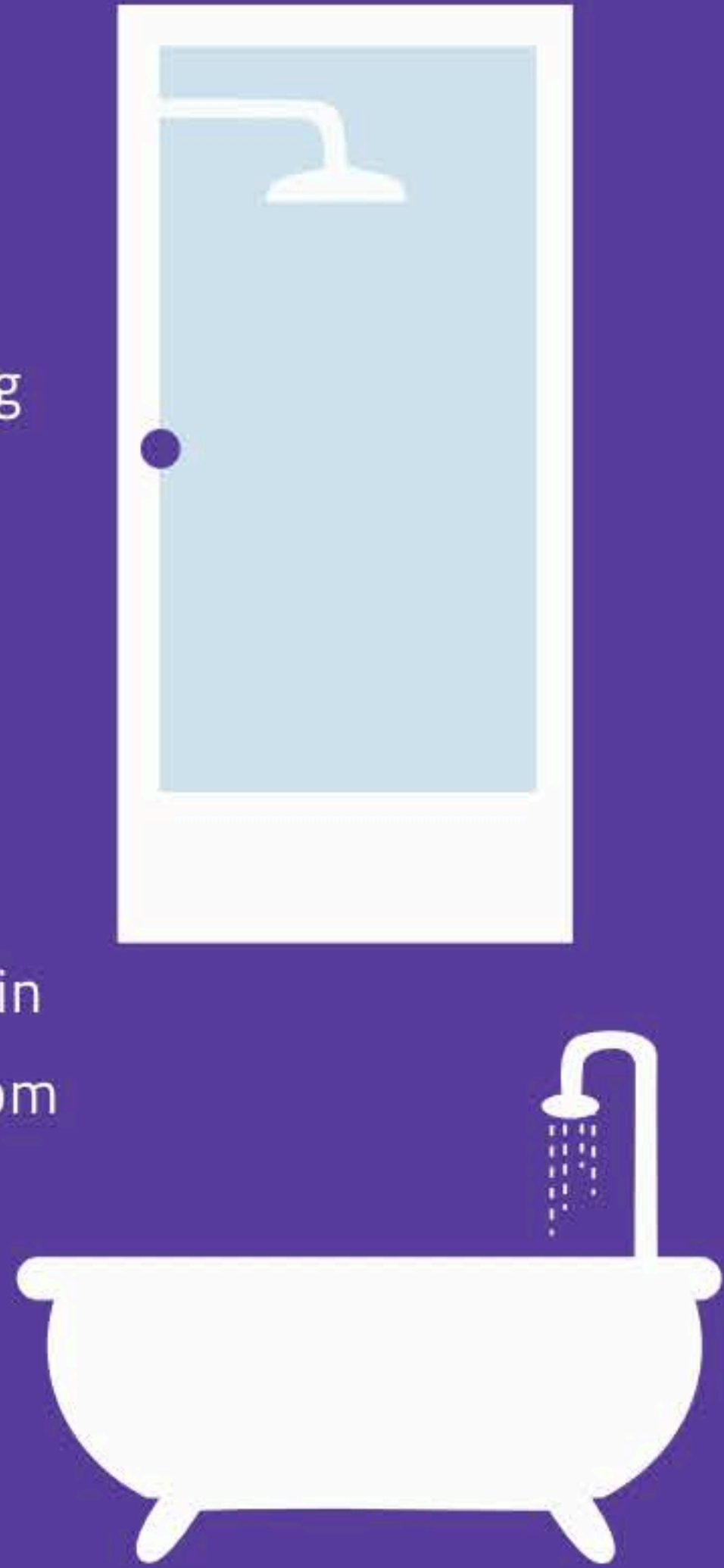


SECOND FLOOR



# BATHROOMS

- **Flooring**  
Marble
- **Wall**  
Imported marble up to false ceiling
- **Ceiling**  
100% moisture resistant gypsum false ceiling with acrylic emulsion paint
- **Fixtures & Fittings**  
Granite/marble counter with under counter vanity counter, white sanitary ware & contemporary chrome plated fittings, Kohler/Grohe or equivalent. Shower cubicle in all bathrooms and Jacuzzi in master bathroom
- **Accessories**  
Exhaust fan, towel rail & toilet paper holder



# BEDROOMS

- **Wall & Ceiling**  
Plastered with POP and acrylic emulsion paint
- **Flooring**  
Imported marble in master bedroom
- **Wardrobes**  
Built-in wardrobes



# LIVING SPACES

- **Wall & Ceiling**  
Plastered with POP and acrylic emulsion paint
- **Flooring**  
Imported marble

## BALCONY:

- **Flooring**  
Anti-skid vitrified tiles
- **Wall**  
Weather-proof external texture paint
- **Ceiling**  
Plastered with POP and acrylic emulsion paint
- **Parapet**  
Stone coping

## INTERNAL STAIRCASE

- **Flooring**  
Imported marble
- **Wall**  
Plastered with POP and acrylic emulsion paint
- **Ceiling**  
Plastered with POP and acrylic emulsion paint
- **Balcony**  
Toughened glass with SS
- **Special Feature**  
Toughened glass with SS



[www.Zricks.com](http://www.Zricks.com)

# DOORS & WINDOWS



- **Main Door**  
Teak wood panelled door/skin moulded doors with design
- **Internal Doors**  
Flush door with teak veneered finish/skin moulded doors and frame : CP/Teak wood with polish
- **External Glazing/ Windows**  
UPVC/ Aluminium with insulated glass



# MODULAR KITCHEN

- **Flooring**  
Imported marble
- **Wall**  
Imported marble, 2 feet above the counter, rest of the walls plastered with POP and acrylic emulsion paint  
Ceiling Plastered with POP and acrylic emulsion paint
- **Special Feature**  
Modular kitchen & utility of Rational Germany/ Hacker/ Veneta Cucine or equivalent with chimney & hob, double bowl stainless steel sink with drain board



# STUDY

- **Flooring**  
Imported marble
- **Wall**  
Plastered with POP and acrylic emulsion paint
- **Ceiling**  
Plastered with POP and acrylic emulsion paint

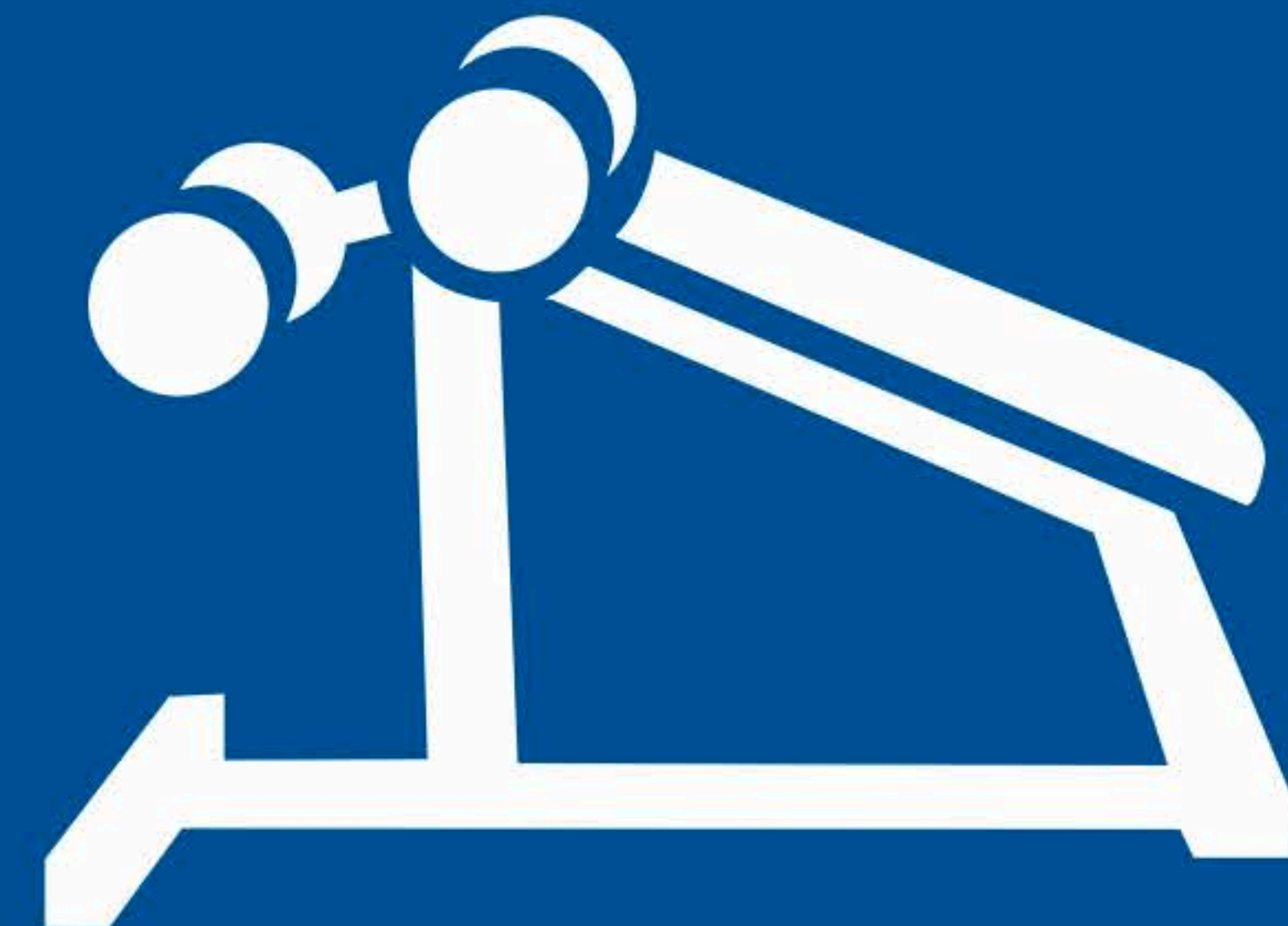


# FACILITIES

- **Lap Pool**  
Approximate size of 18'X6'
- **Electrical**  
Electrical copper wiring in concealed conduits for all light and power points with modular switches
- **Power Back-Up**  
Minimum 20 KVA back-up capabilities
- **Air - Conditioning**  
VRV/VRFT system (heating & cooling) (in basement only low side work provision)

## BASEMENT (Multi – purpose hall)

- **Flooring**  
Marble
- **Wall**  
Plastered with POP and acrylic emulsion paint
- **Ceiling**  
Plastered with POP and acrylic emulsion paint



# CLUB

Exquisite recreational club spread over 2 acres, with an outdoor and kids' pools, jogging tracks, outdoor activities, gymnasium, multi-cuisine restaurant, banquet hall, state-of-the-art theatre, multiple sports facilities and spa

\*All images for artistic representation only.

\*\* Architects and developer reserve the right to alter the layout, specifications and facilities for design improvement.



# A BIT ABOUT BPTP

The last decade has witnessed the growth of one of the most prolific real estate companies in the National Capital Region, BPTP. Driven by the twin pillars of operational excellence and unparalleled customer experience, our endeavour is to create best in class and sustainable developments.

In just 9 years, we have successfully launched Faridabad as an incredibly promising real estate market, with our flagship project Parklands, a fully integrated township. In Gurgaon we have created perfect examples of integrated luxury townships - Amstoria and Astaire Gardens. Capital City NOIDA, our marquee mixed use project is set to create a bench mark in the Indian realty market.

Our core strengths are identifying opportunities before others, developing and successfully executing them to a sustainable development. We have set our sights on a future which holds even greater promise as our company strives to achieve new heights.

*The Deck\**



*Chateau\**





Park Grandeura\*\*



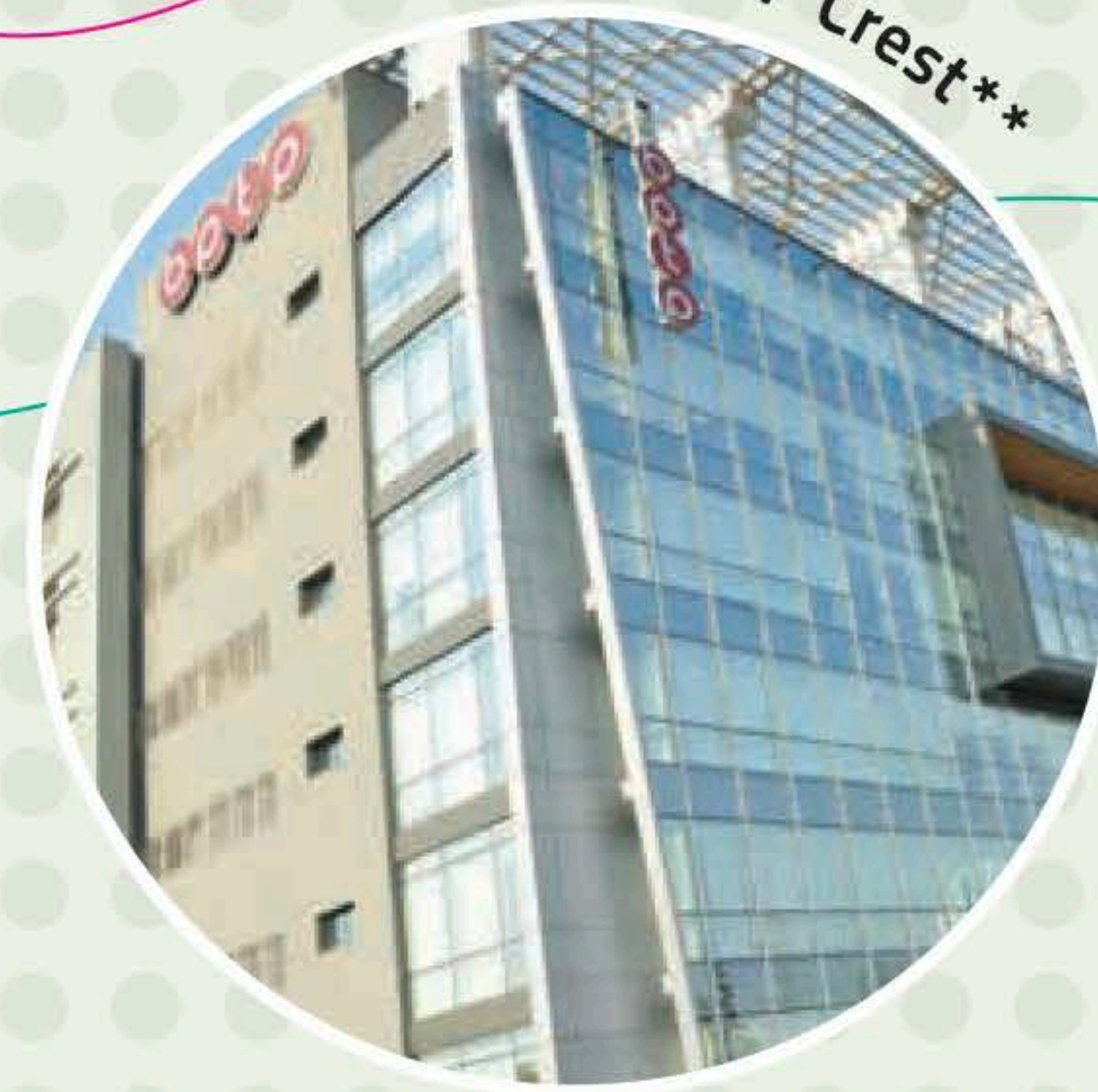
Capital City\*



The Resort\*



BPTP Crest\*\*



BPTP Office: BPTP Ltd., BPTP Crest, Plot No. 15, Udyog Vihar Phase-IV, Gurgaon - 122015, Haryana. Tel. + 91-124-385-2787, Fax +91-124-385-2999, E-mail: sales@bptp.com,

DGTCP Haryana has granted M/s Countrywide Promoters (P) Ltd. license no. 15 dated 07/03/11 for development of a residential colony over 102.2 acres. The total no. of plots approved are 637 (including EWS) & the layout plan is approved vide DRG. NO. DGTCP-2395 on 14/2/11. There is a provision of 1 nursery school, 2 primary schools, 1 Community centre and 4 nursing homes. Note- Approvals can be checked in the colonizer's office. Layout plan is subject to changes as per the final Demarcation/Zoning plan of the colony.

[www.Zricks.com](http://www.Zricks.com)

1 SQ. YD. = 0.8361 SQ. MTS.

\* Artistic Impression \*\* Actual Image





[www.bptp.com](http://www.bptp.com)

[www.Zricks.com](http://www.Zricks.com)