



ZBRICKS







**3 Bedroom apartment | 164.44 sqm (1770 sqft)**

Ground Floor, rear



**3 Bedroom apartment | 172.33 sqm (1855 sqft)**  
Ground Floor, front



**3 Bedroom apartment | 187.2 sqm (2015 sqft)**

First Floor, rear

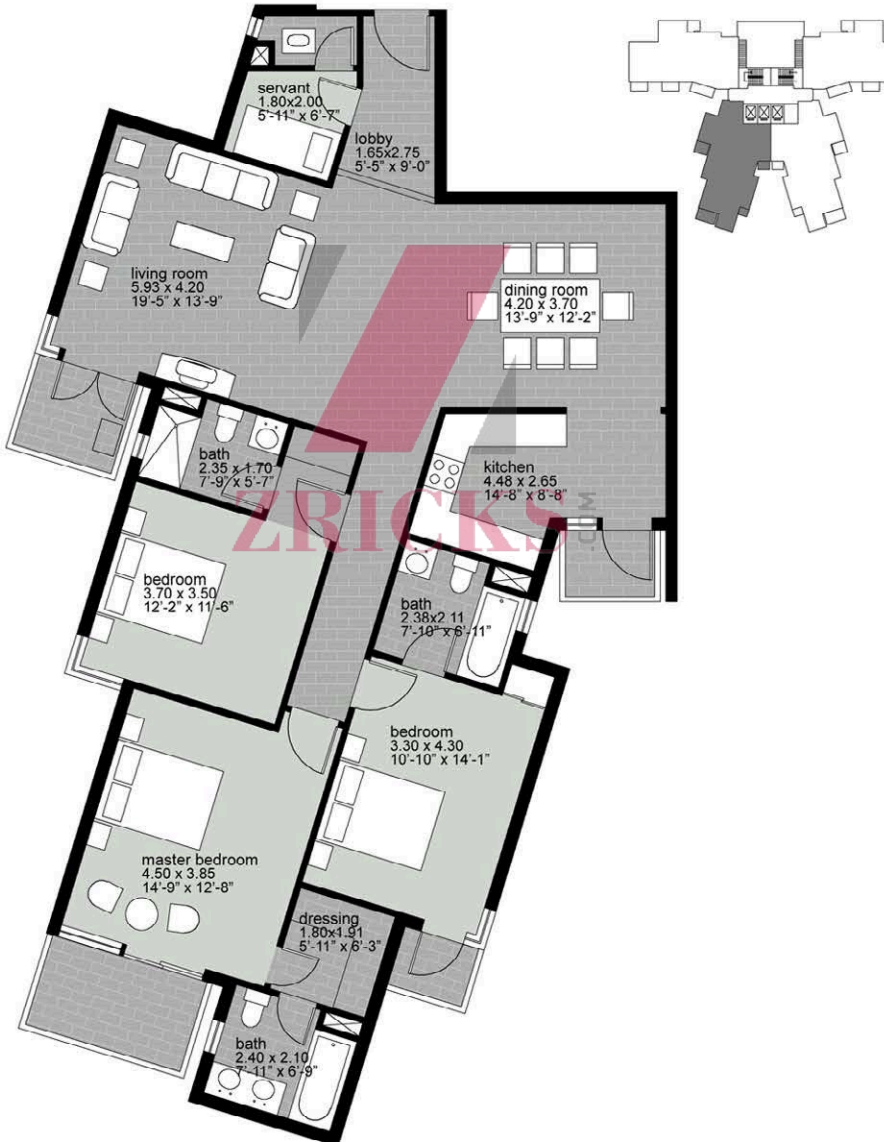


**3 Bedroom apartment | 185.34 sqm (1995 sqft)**

Typical layout, with terrace

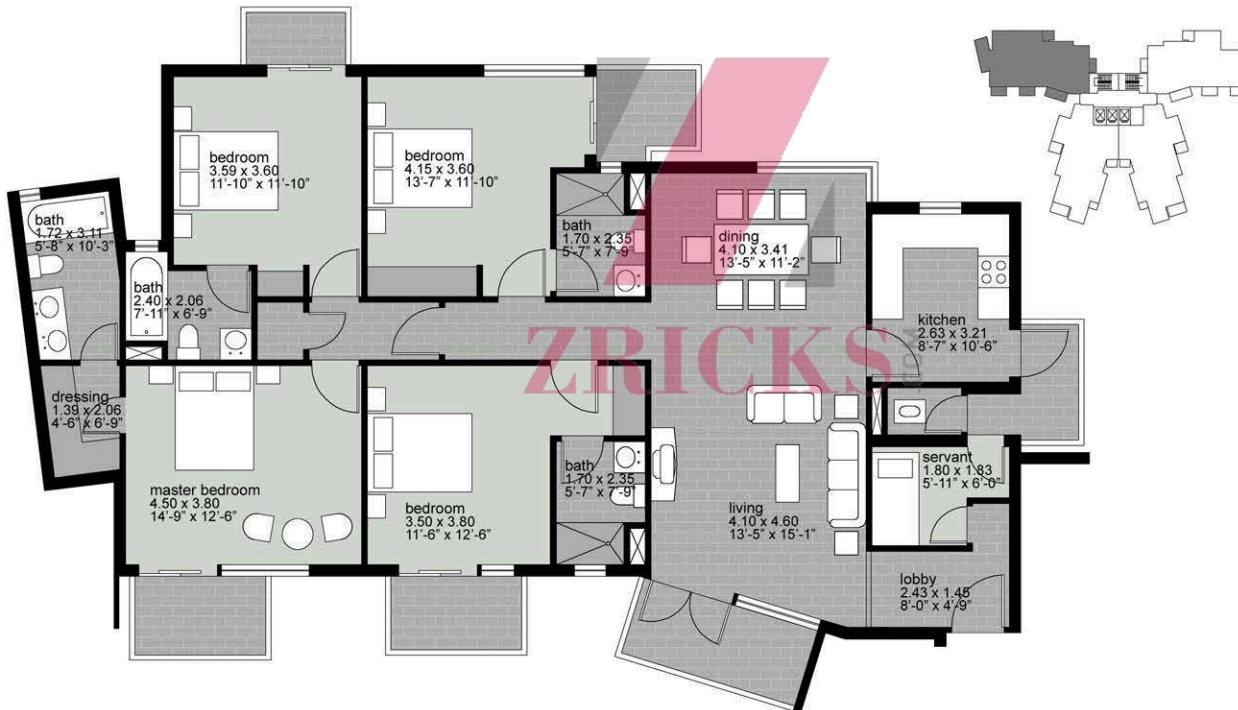


**3 Bedroom apartment | 189.06 sqm (2035 sqft)**  
Typical layout

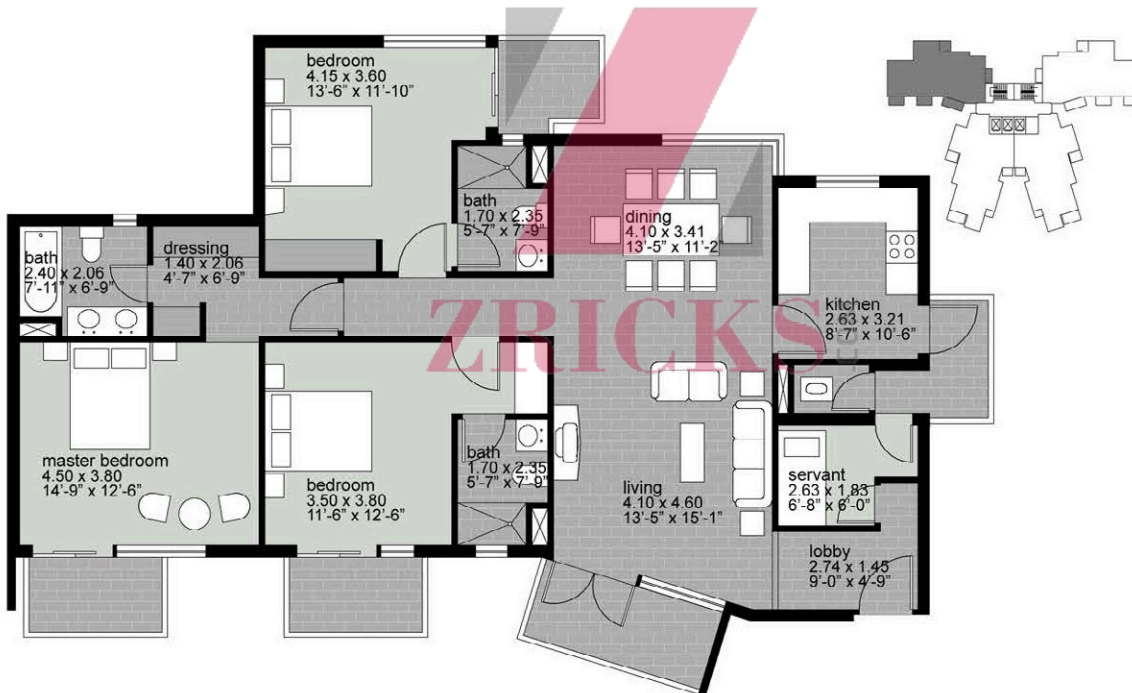




**4 Bedroom apartment | 213.67 sqm (2300 sqft)**



**3 Bedroom apartment | 185.34 sqm (1995 sqft)**  
Typical layout





ZRICKS  
GROUP



