



TRICKS

*The Close*<sup>TM</sup>

AT NIRVANA COUNTRY

EVERYTHING GOOD IS CLOSE!

SOUTH WING



UNITECH LTD. AND PIONEER PROFIN LTD.  
THE PEOPLE WHO GAVE YOU  
**GREENWOOD CITY,**  
VISTA VILLAS, SOUTH CITY-II,  
RESIDENCY GREENS AND NIRVANA COUNTRY WELCOME YOU TO  
**THE CLOSE AT NIRVANA COUNTRY,**  
**WHERE EVERYTHING GOOD IS CLOSE.**

In simple words **THE CLOSE** is designed to keep the best things in life very very close to you.

LOCATION MAP

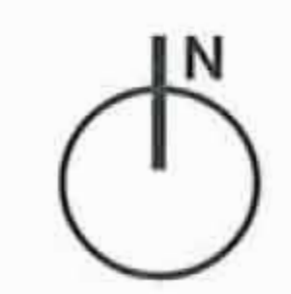


THE CLOSE AT NIGHT

# LANDSCAPE PLAN



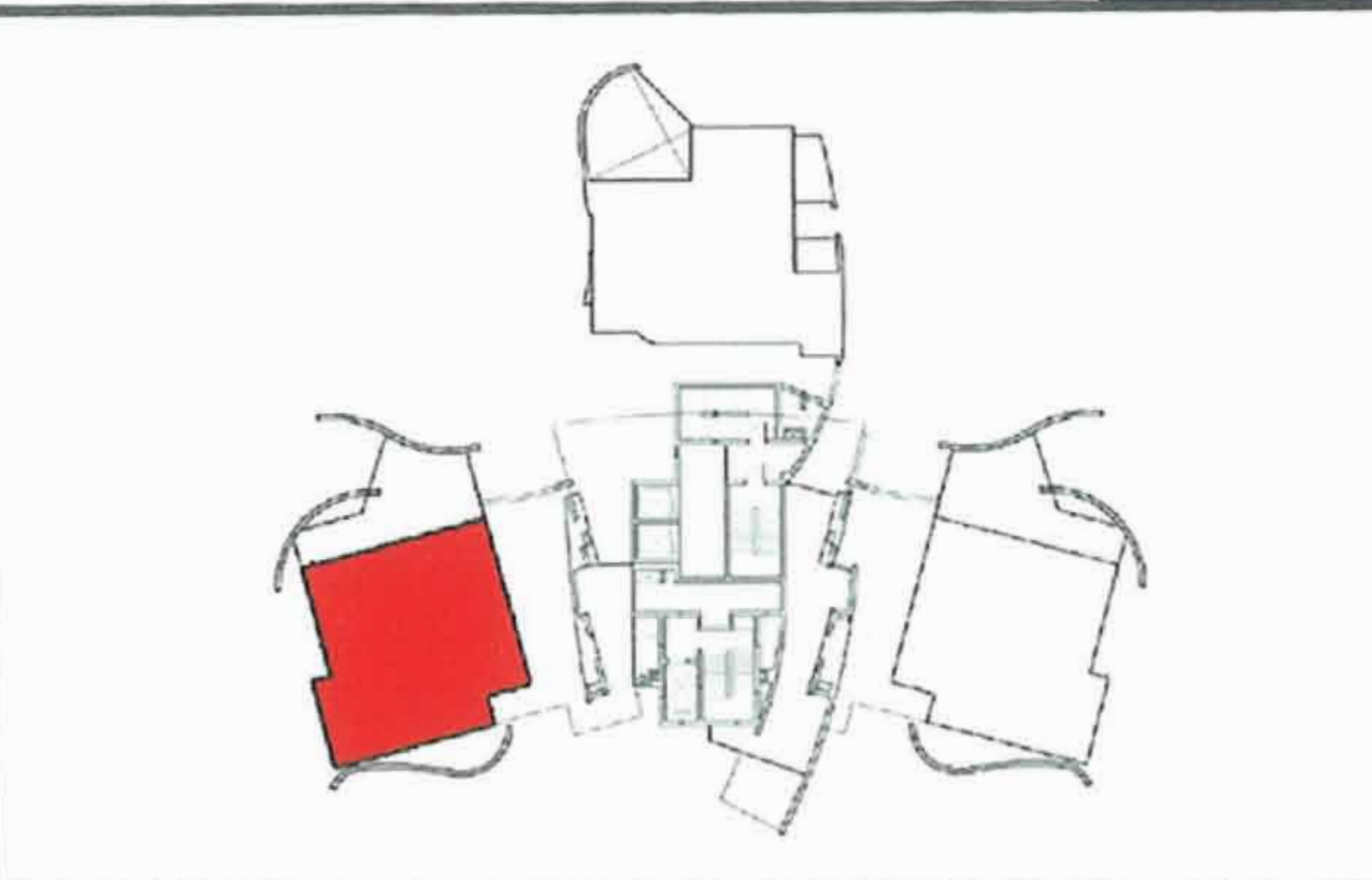
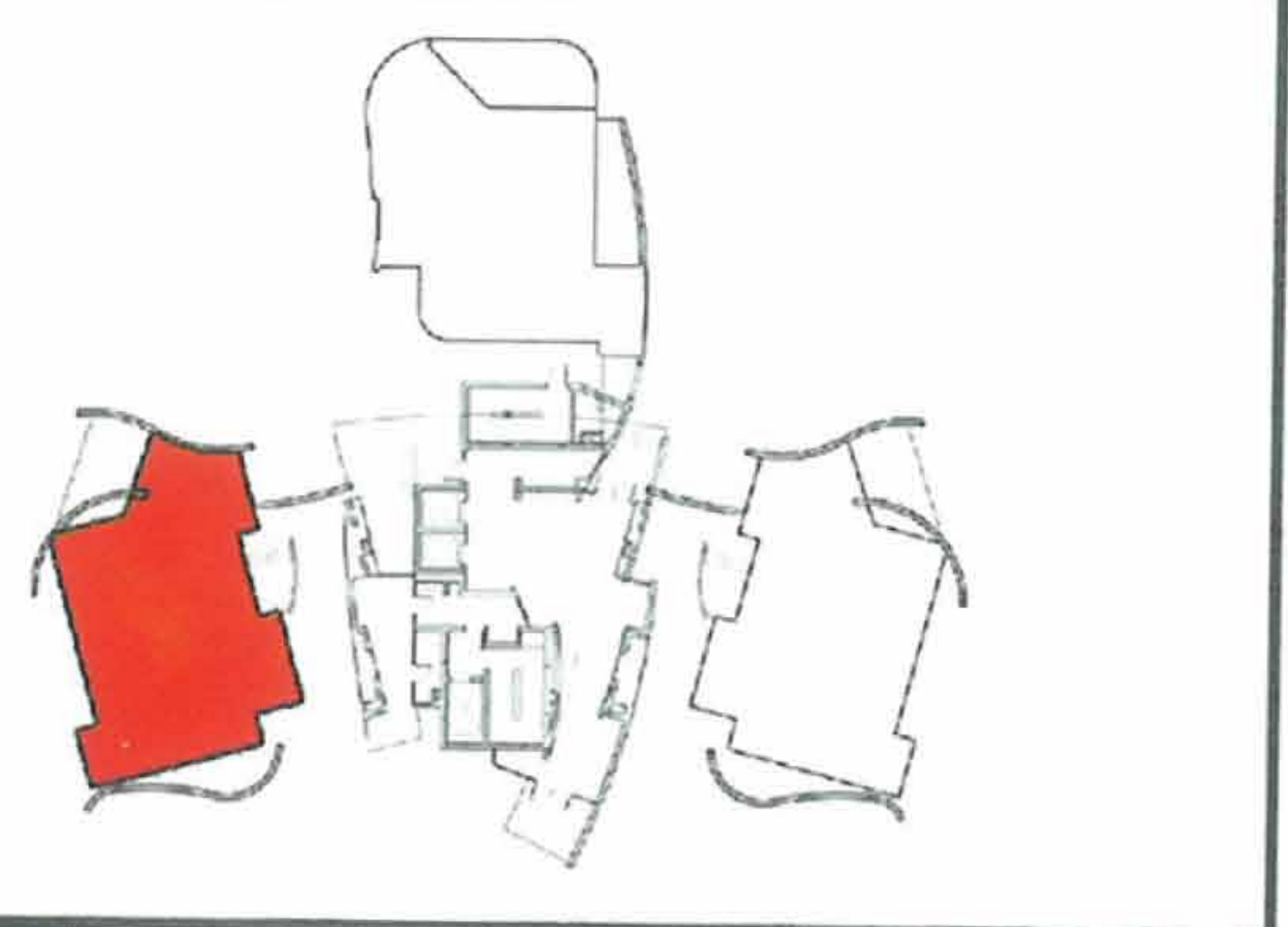
- A. Gated Entry
- B. Gated Exit
- C. Manned Guard House
- D. 6 M Driveway
- E. Tower Drop-Offs
- F. Garage Entry
- G. Garage Exit
- I. Social Housing
- J. Clubhouse
- K. Swimming Pool
- L. Jogging Track
- M. Children's Play Area
- N. Meadow
- O. Amphitheater
- P. Waterplay
- Q. Spiral Mound
- R. Tennis Court
- S. Flowering Trees



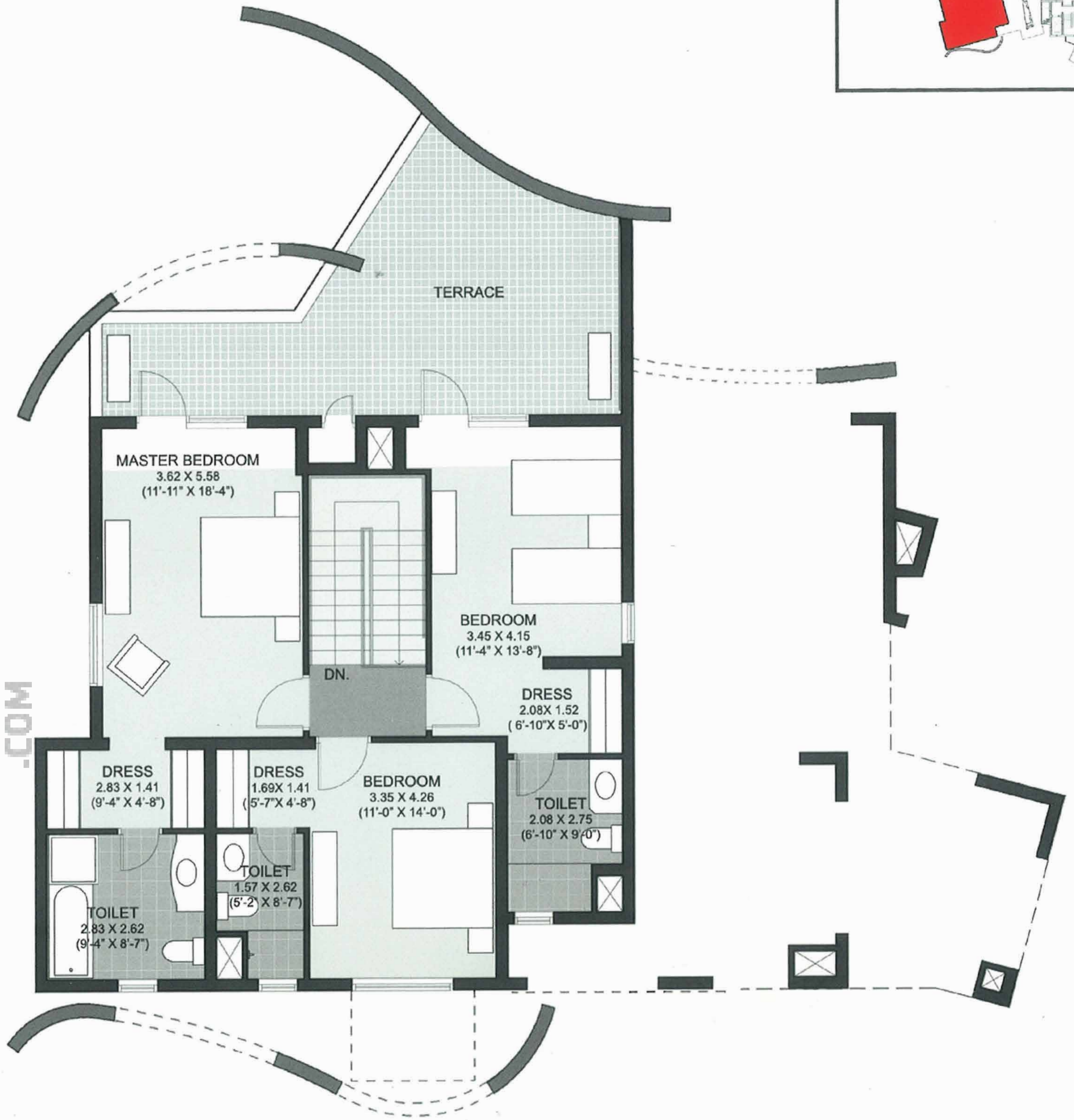
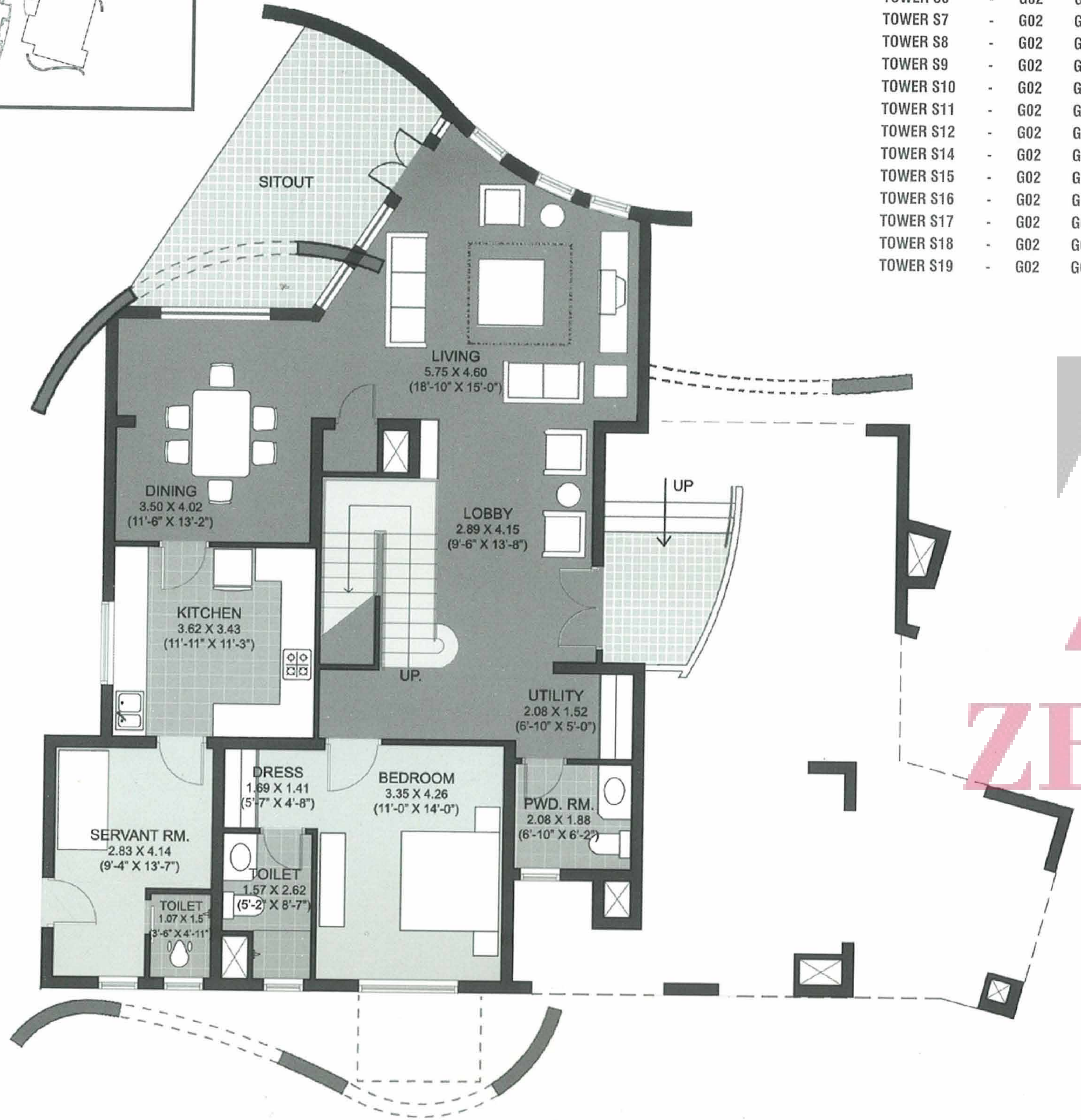


- A. Gated Entry
- B. Gated Exit
- C. Manned Guard House
- D. 6 M Driveway
- E. Tower Drop-Offs
- F. Garage Entry
- G. Garage Exit
- I. Social Housing
- J. Clubhouse
- K. Swimming Pool
- L. Jogging Track
- M. Children's Play Area
- N. Meadow
- O. Amphitheater
- P. Waterplay
- Q. Spiral Mound
- R. Tennis Court

Note: Tower Number 13 and Floor Number 13 are absent in this project.



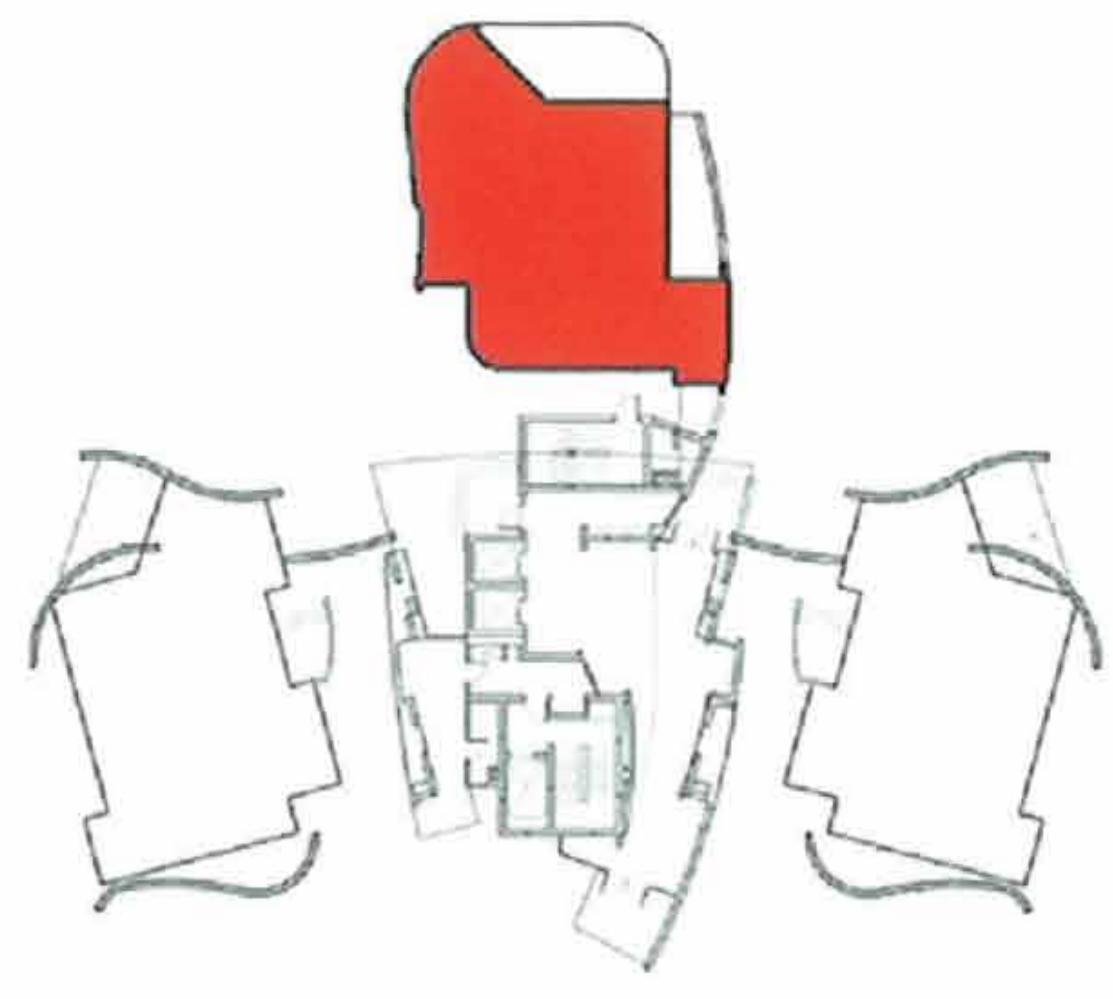
- TOWER S1 - G02 G01
- TOWER S2 - G02 G01
- TOWER S3 - G02 G01
- TOWER S4 - G02 G01
- TOWER S5 - G02 G01
- TOWER S6 - G02 G01
- TOWER S7 - G02 G01
- TOWER S8 - G02 G01
- TOWER S9 - G02 G01
- TOWER S10 - G02 G01
- TOWER S11 - G02 G01
- TOWER S12 - G02 G01
- TOWER S14 - G02 G01
- TOWER S15 - G02 G01
- TOWER S16 - G02 G01
- TOWER S17 - G02 G01
- TOWER S18 - G02 G01
- TOWER S19 - G02 G01



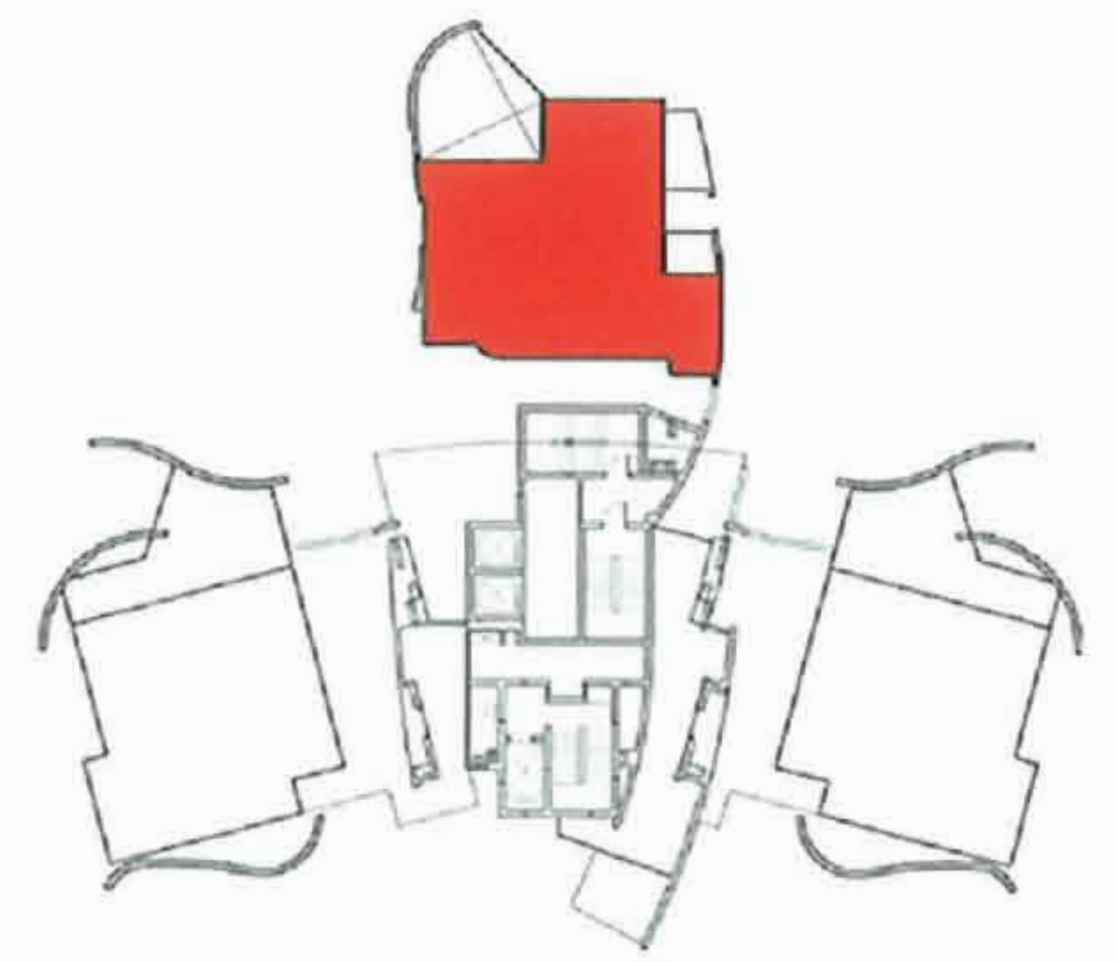
TOWN HOUSE - 1 Lower Level

TOWN HOUSE - 1 Upper Level

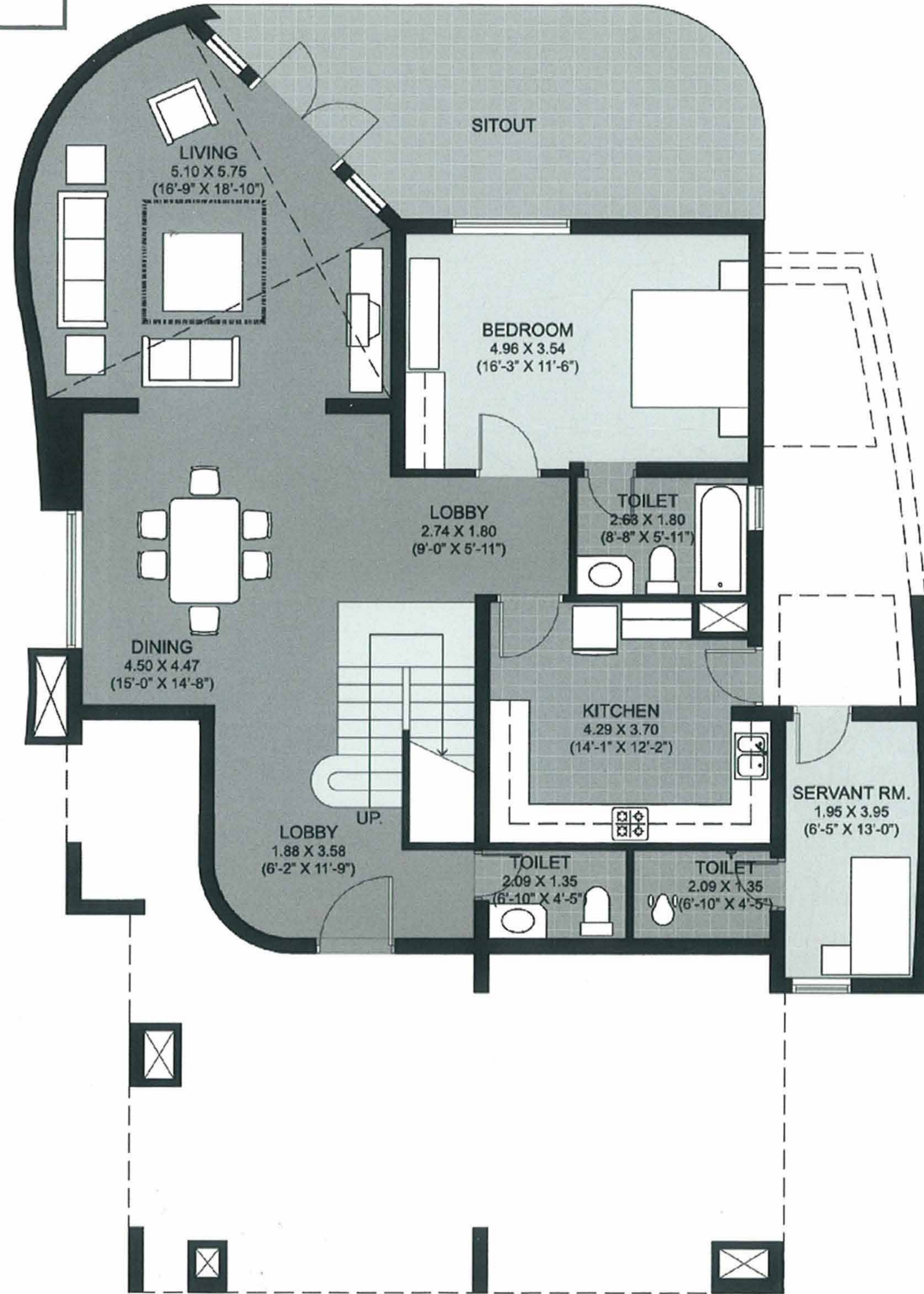
3170 sq.ft. (294.5 sq.mt.)  
 Terrace Area - 409 sq.ft. (38 sq.mt.)



- TOWER S1 - G03
- TOWER S3 - G03
- TOWER S5 - G03
- TOWER S7 - G03
- TOWER S8 - G03
- TOWER S10 - G03
- TOWER S12 - G03
- TOWER S15 - G03
- TOWER S17 - G03
- TOWER S19 - G03



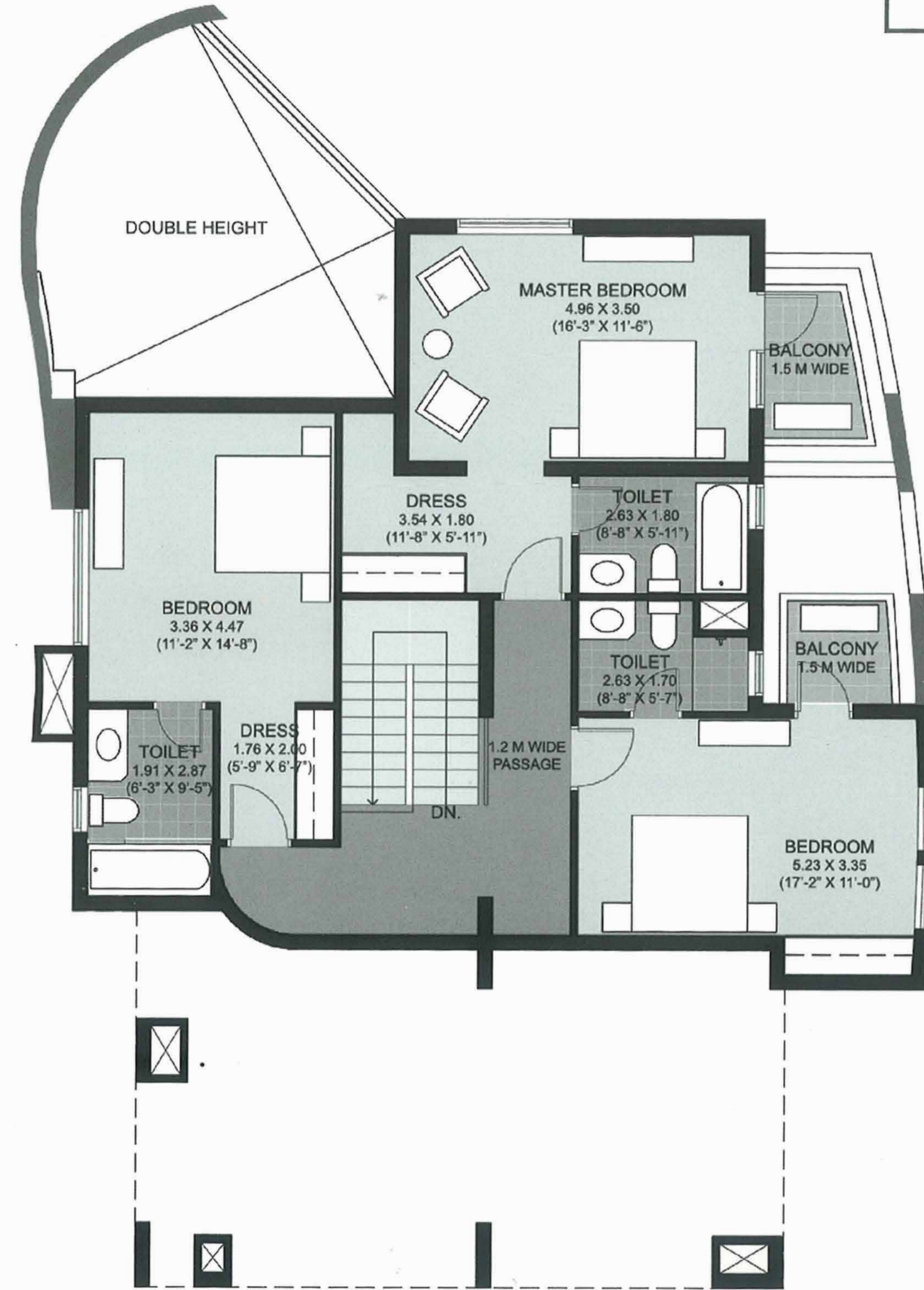
TOWN HOUSE - 2 Lower Level

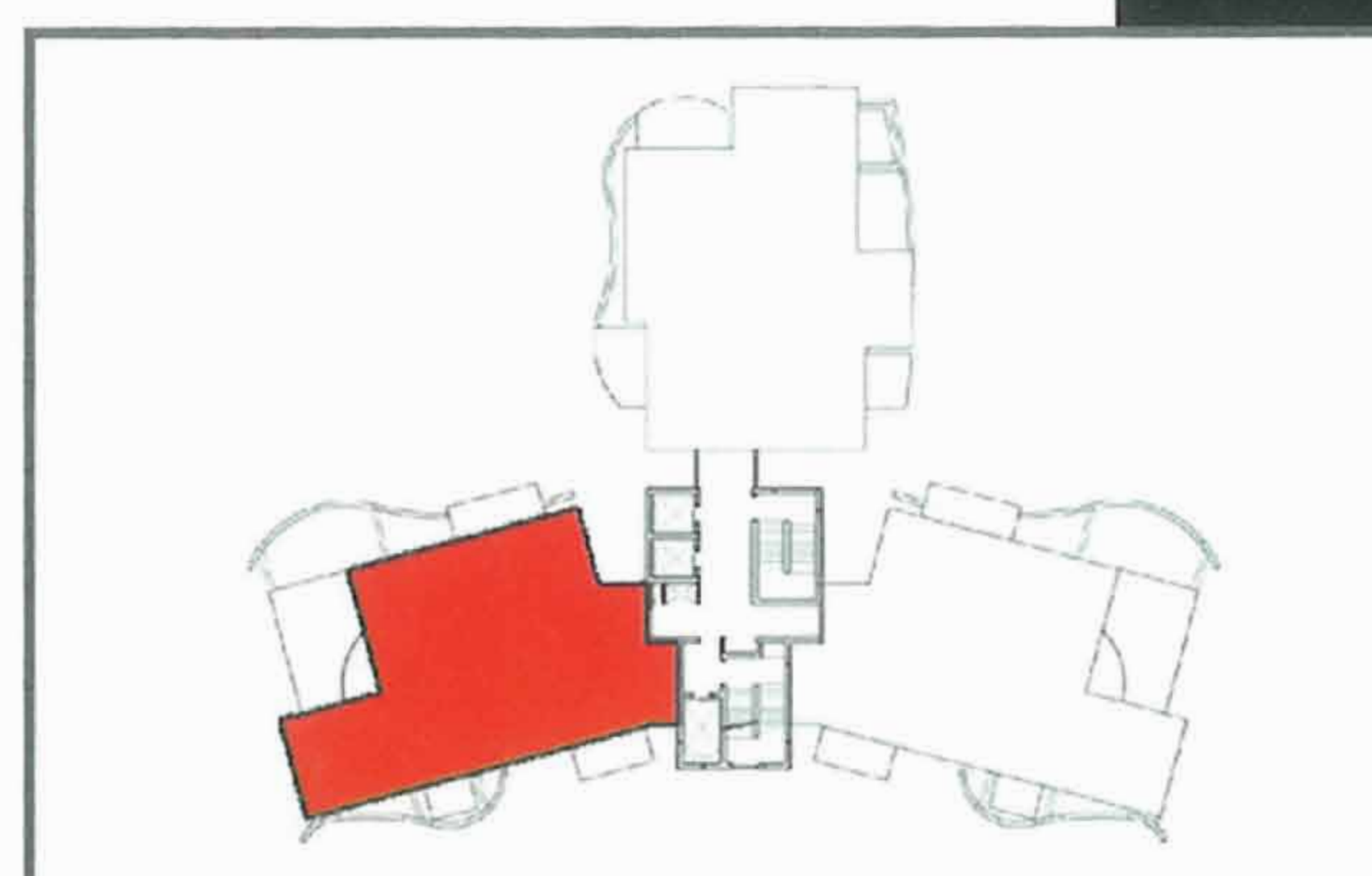
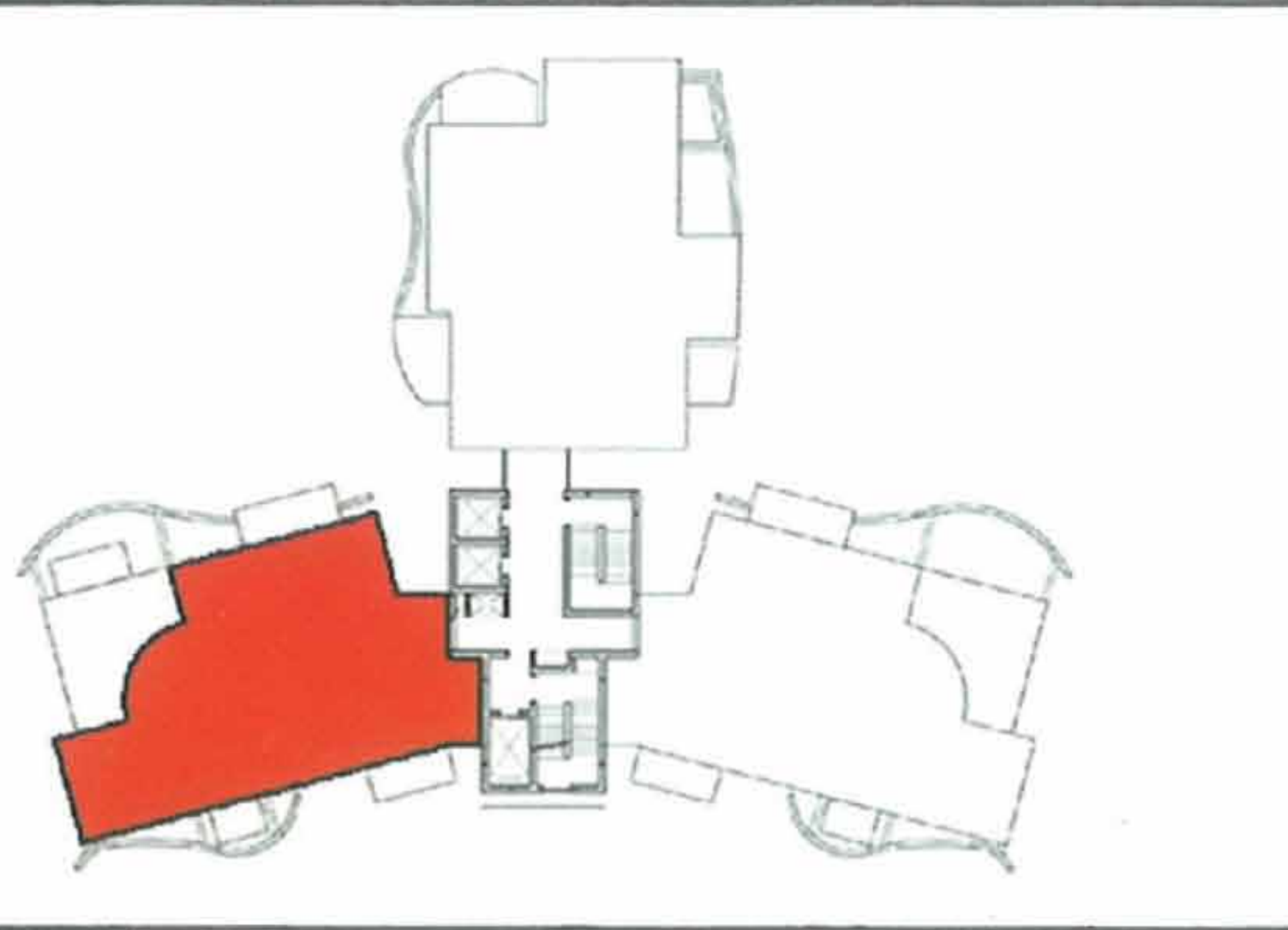


3372 sq.ft. (313.2 sq.mt.)

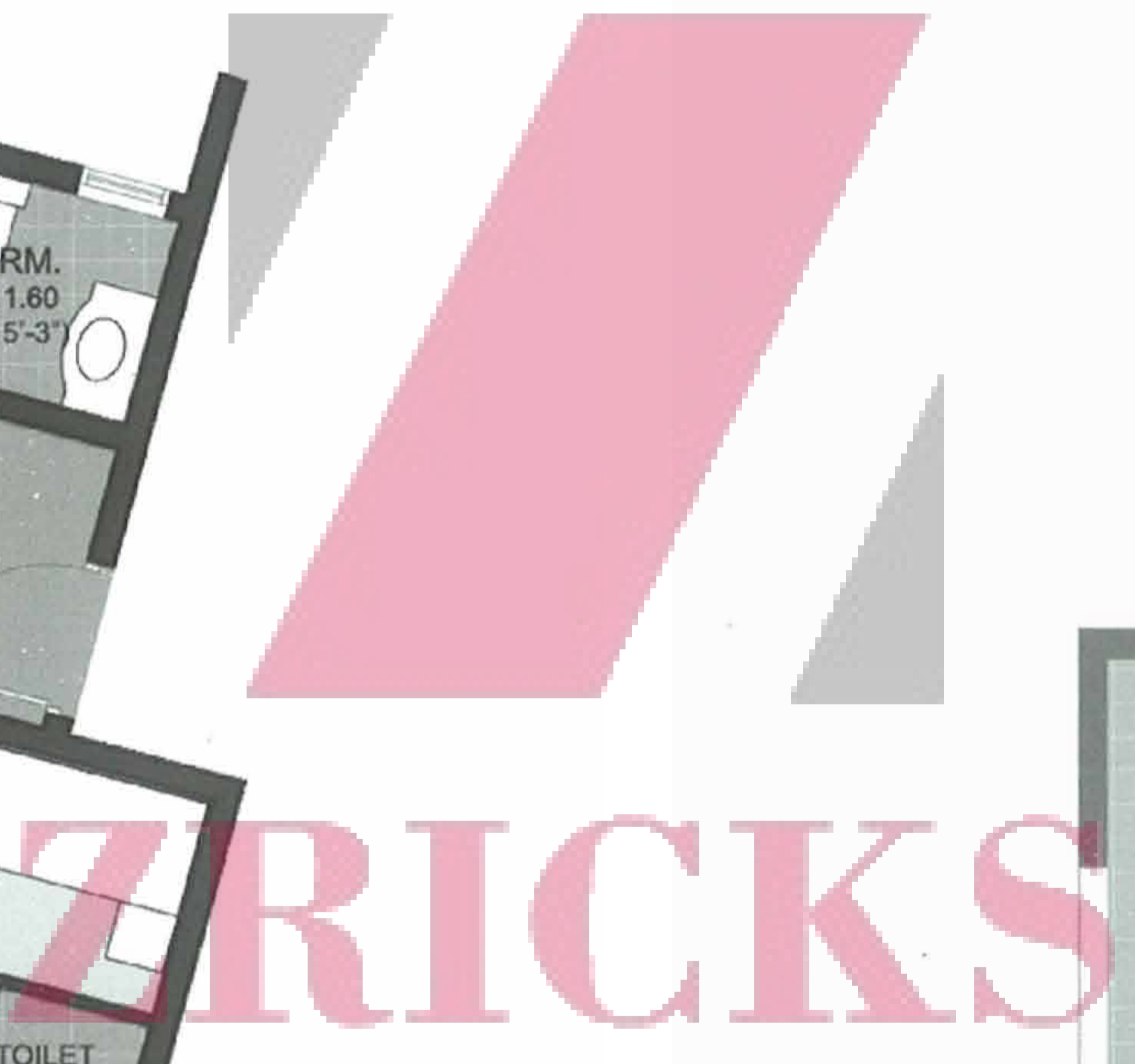
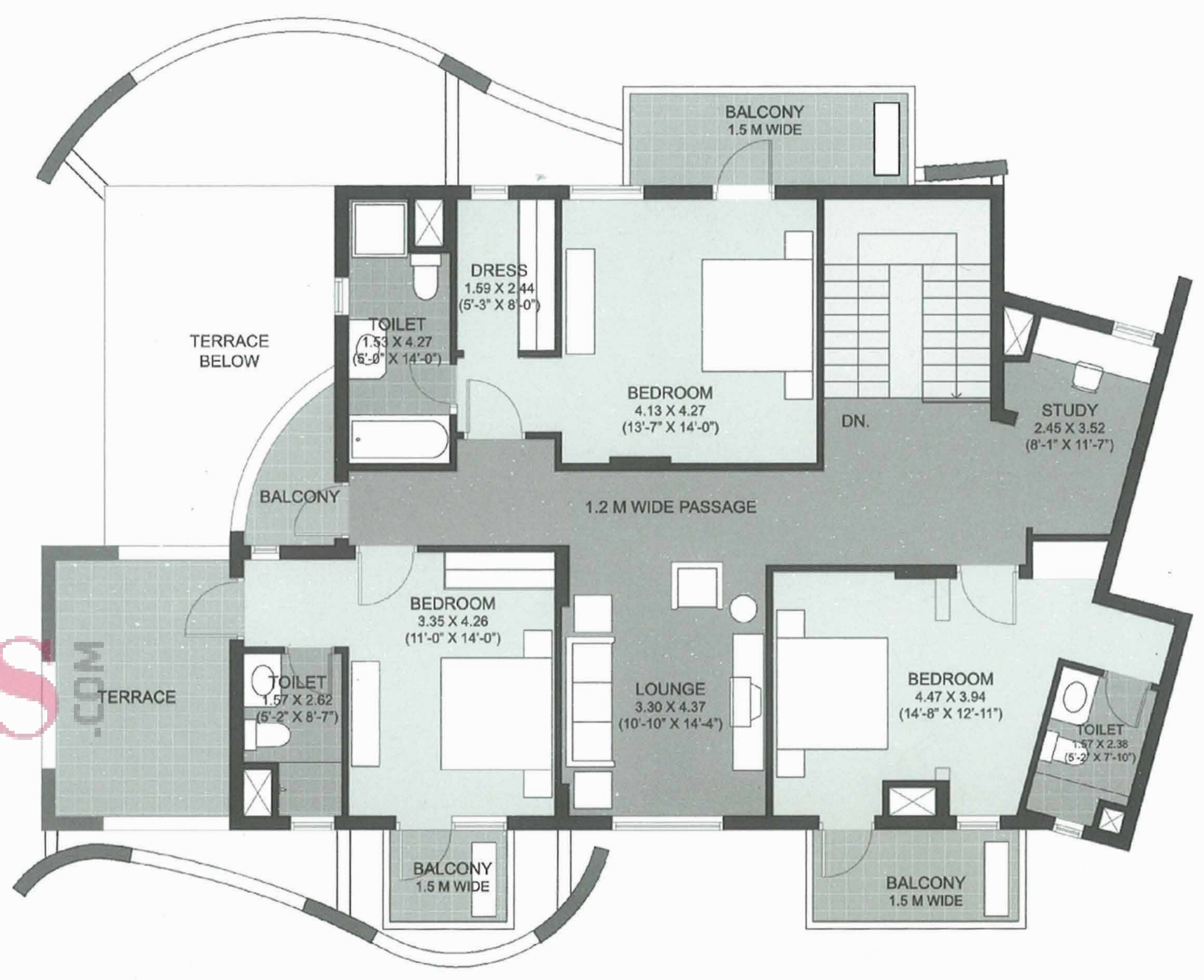
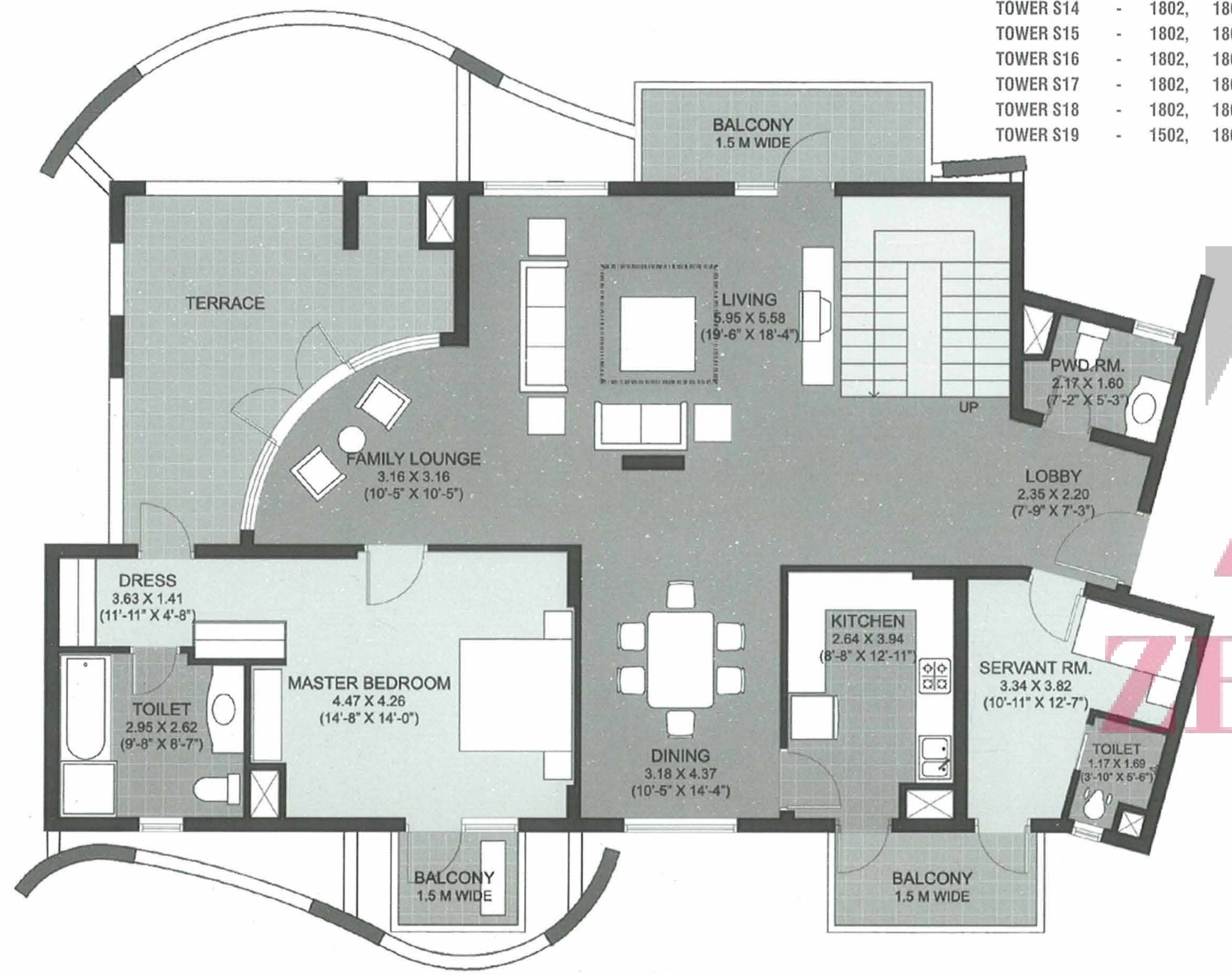


TOWN HOUSE - 2 Upper Level





- TOWER S1 - 1802, 1501
- TOWER S2 - 1802, 1801
- TOWER S3 - 1802, 1801
- TOWER S4 - 1802, 1501
- TOWER S5 - 1802, 1801
- TOWER S6 - 1802, 1801
- TOWER S7 - 1802, 1801
- TOWER S8 - 1802, 1501
- TOWER S9 - 1802, 1801
- TOWER S10 - 1802, 1801
- TOWER S11 - 1802, 1801
- TOWER S12 - 1802, 1801
- TOWER S14 - 1802, 1801
- TOWER S15 - 1802, 1801
- TOWER S16 - 1802, 1801
- TOWER S17 - 1802, 1801
- TOWER S18 - 1802, 1801
- TOWER S19 - 1502, 1801

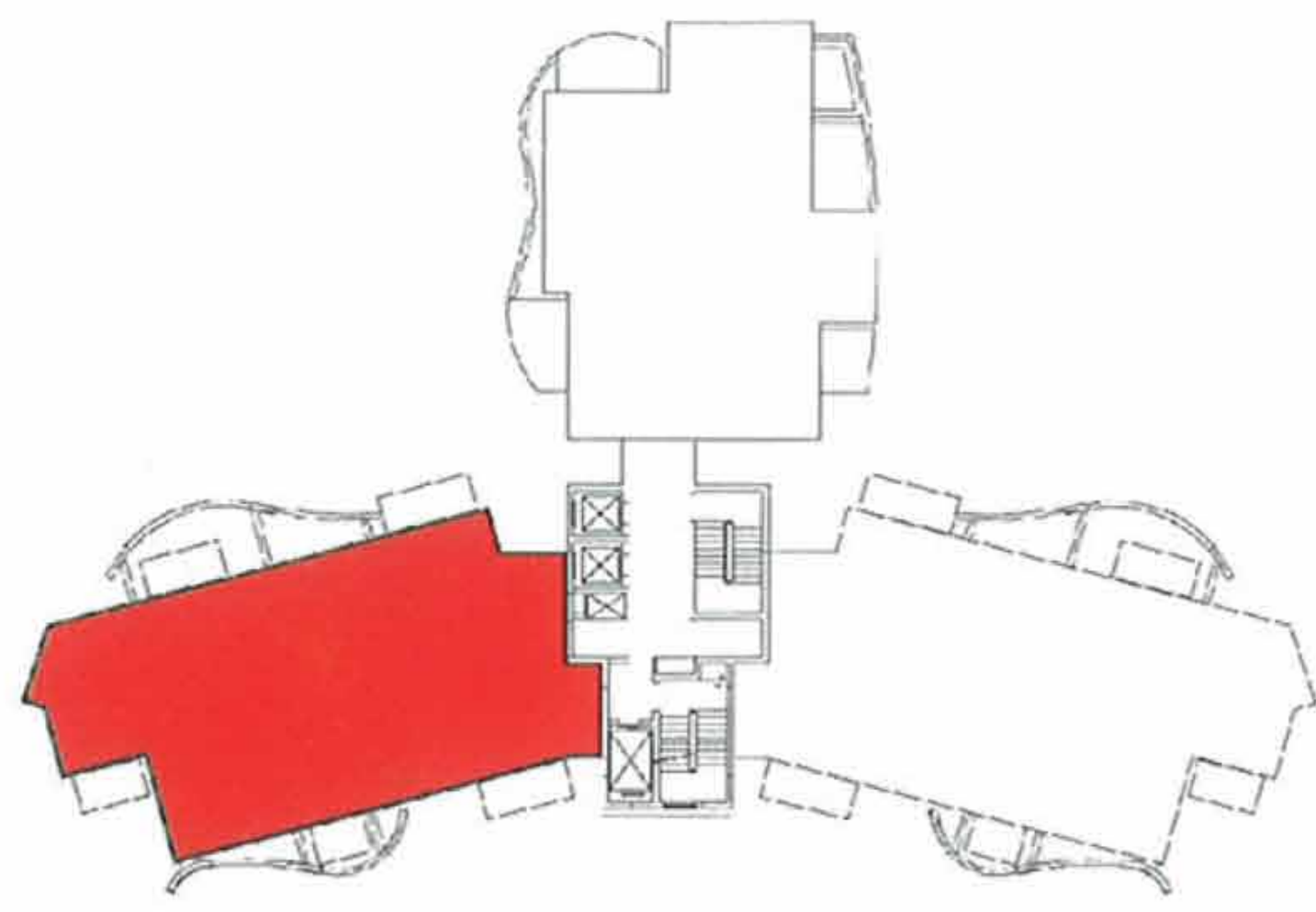


4268 sq.ft. (396.5 sq.mt.)  
 Terrace Area - 387 sq.ft. (36 sq.mt.)

PENTHOUSE - Lower Level

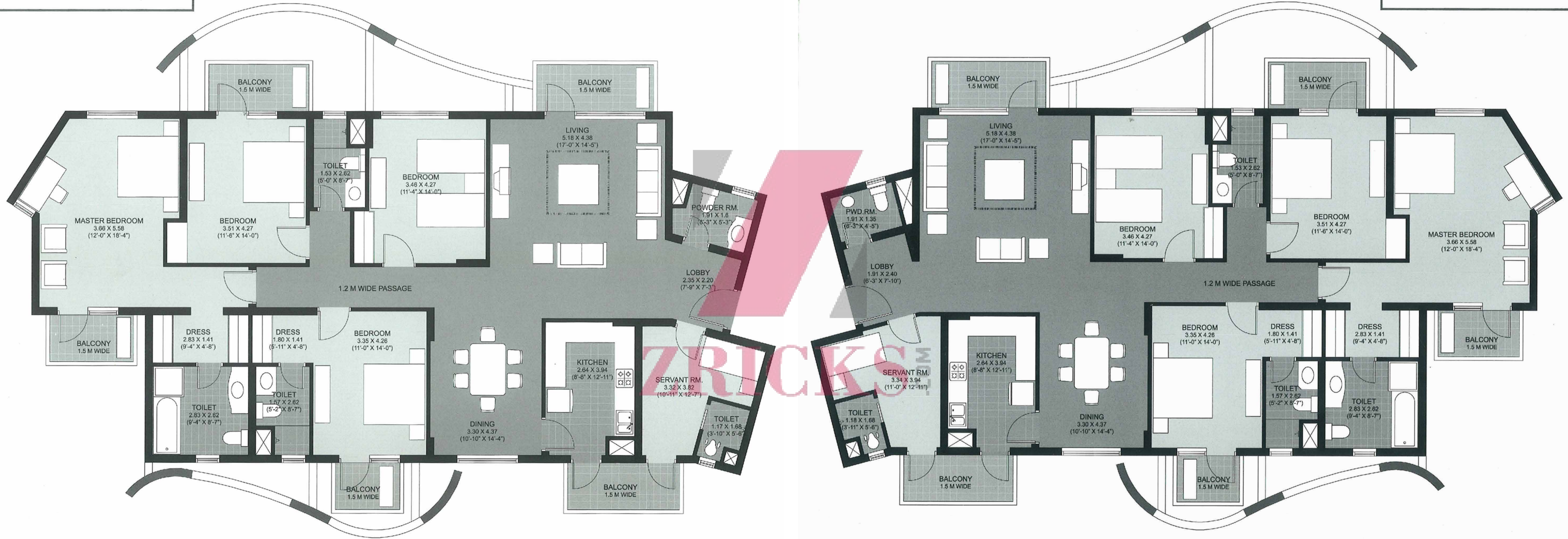
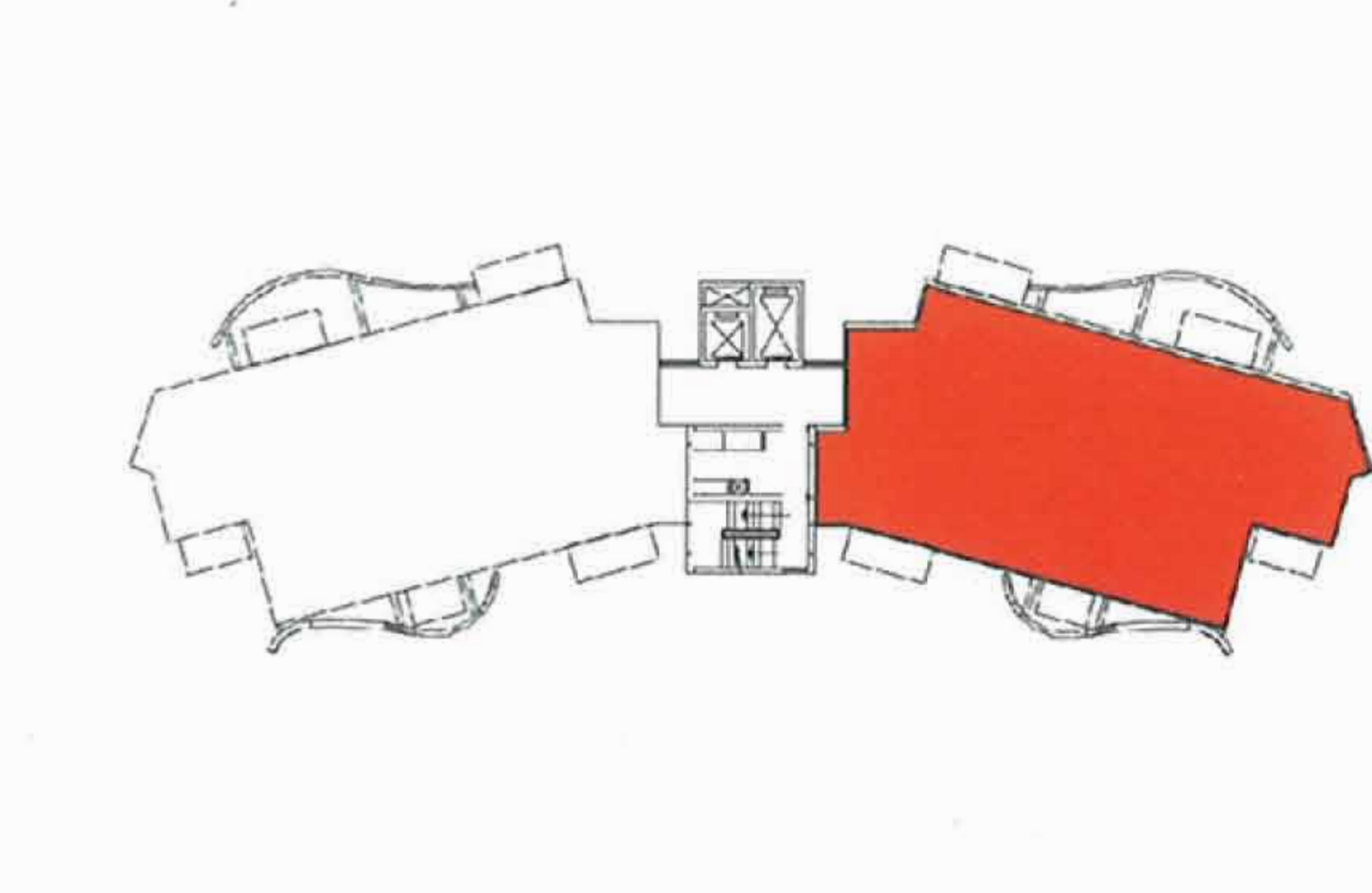
PENTHOUSE - Upper Level





TOWER S1	-	502, 602, 1102, 1202		TOWER S10	-	502, 602, 1102, 1202	501, 601, 1101, 1201
TOWER S3	-	502, 602, 1102, 1202	501, 601, 1101, 1201	TOWER S12	-	502, 602, 1102, 1202	501, 601, 1101, 1201
TOWER S5	-	502, 602, 1102, 1202	501, 601, 1101, 1201	TOWER S15	-	502, 602, 1102, 1202	501, 601, 1101, 1201
TOWER S7	-	501, 601, 1101, 1201		TOWER S17	-	502, 602, 1102, 1202	501, 601, 1101, 1201
TOWER S8	-	502, 602, 1102, 1202		TOWER S19	-		501, 601, 1101, 1201

TOWER S2	-	502, 602, 1102, 1202	501, 601, 1101, 1201	TOWER S11	-	502, 602, 1102, 1202	501, 601, 1101, 1201
TOWER S4	-	502, 602, 1102, 1202	501, 601, 1101, 1201	TOWER S14	-		501, 601, 1101, 1201
TOWER S6	-	502, 602, 1102, 1202	501, 601, 1101, 1201	TOWER S16	-	502, 602, 1102, 1202	501, 601, 1101, 1201
TOWER S9	-	502, 602, 1102, 1202	501, 601, 1101, 1201	TOWER S18	-	502, 602, 1102, 1202	501, 601, 1101, 1201

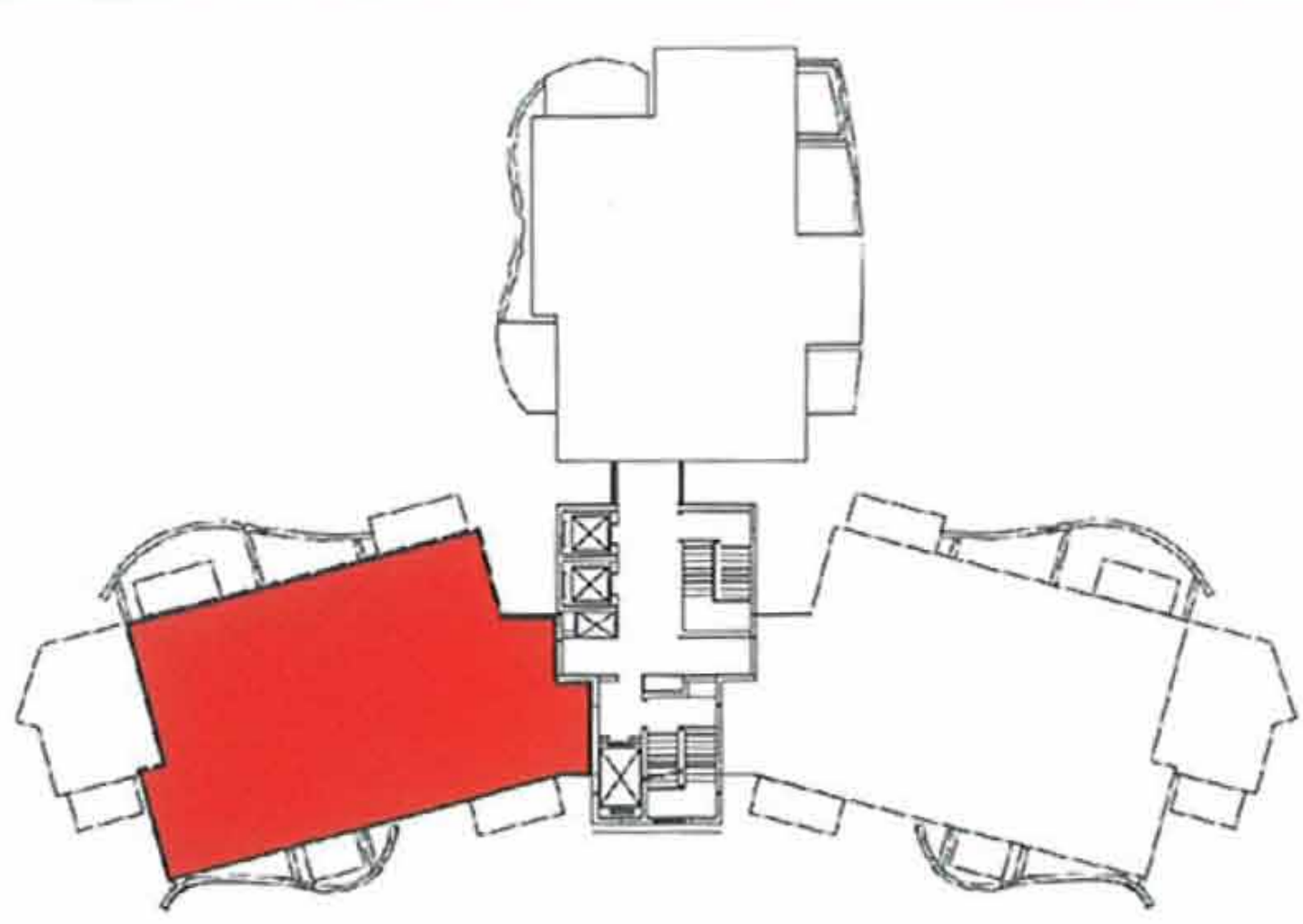


4 BED ROOM (A)

4 BED ROOM (D)

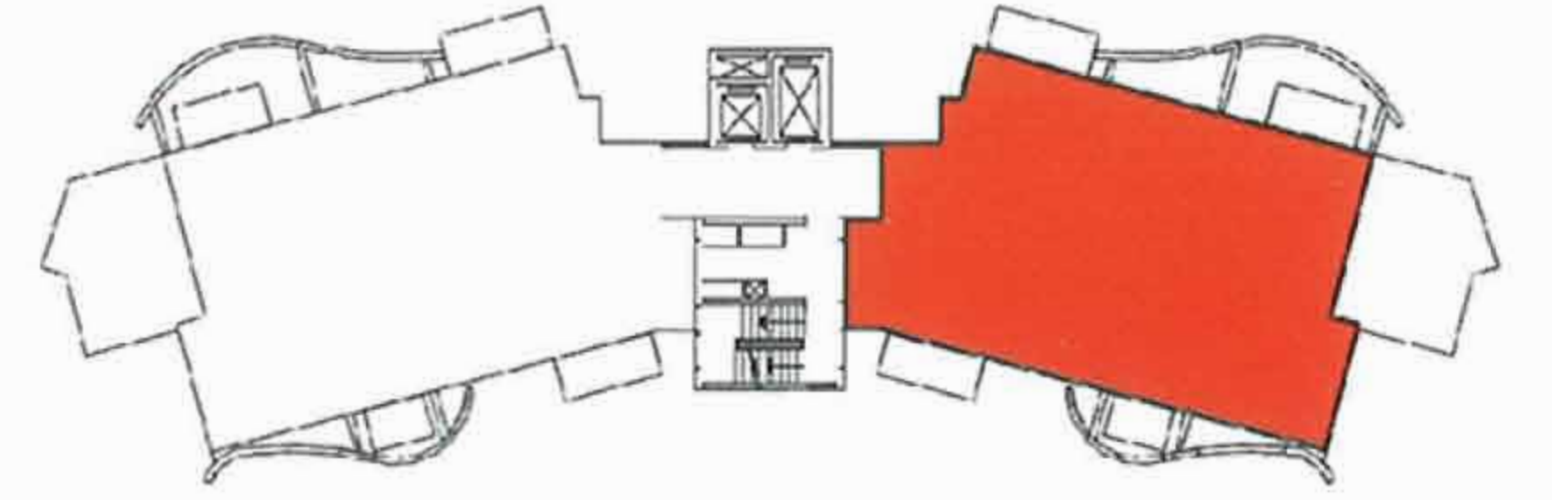
2939 sq.ft. (273 sq.mt.)

2939 sq.ft. (273 sq.mt.)

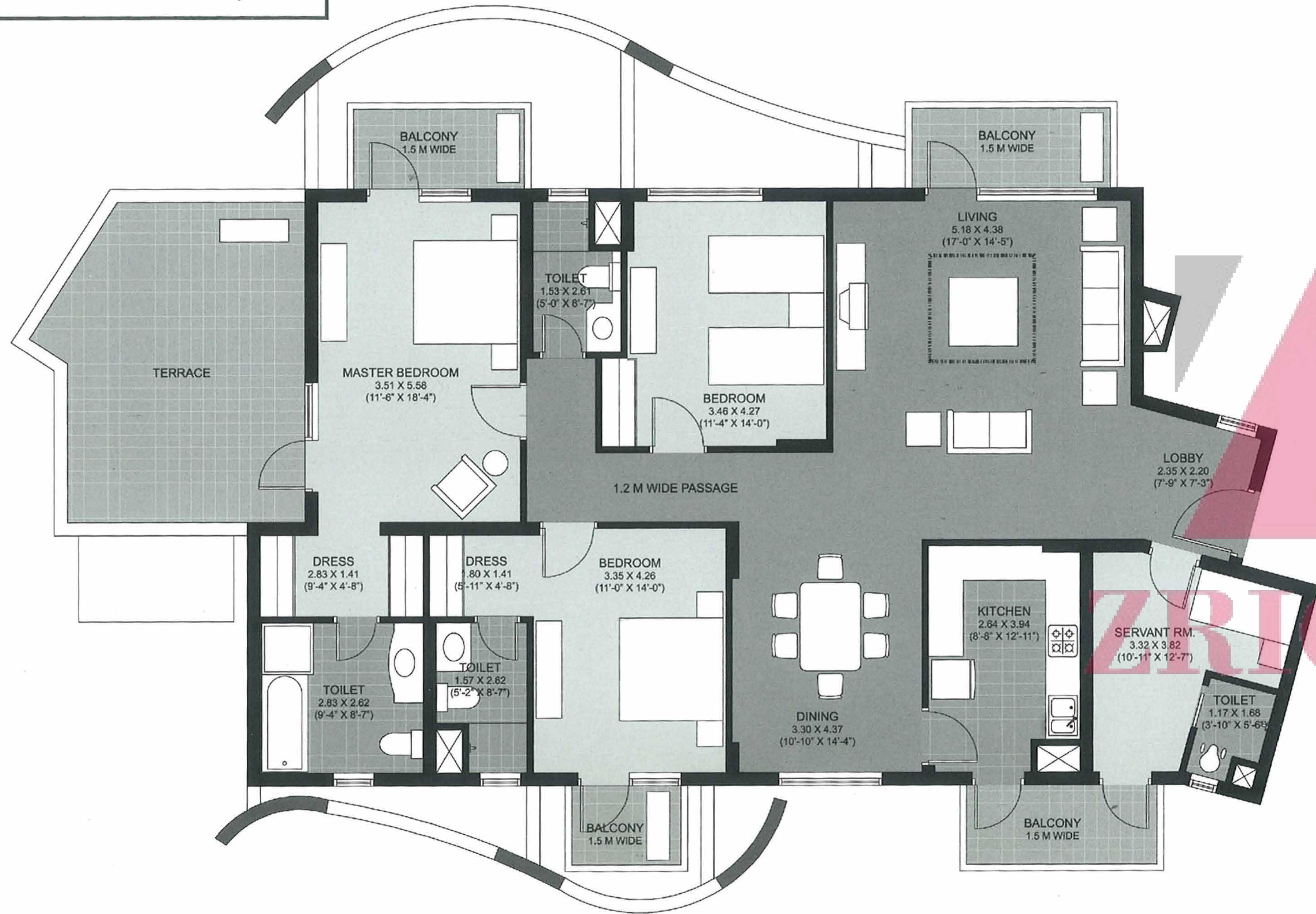


- TOWER S1 - 702, 1402, 701, 1401
- TOWER S3 - 702, 1402, 701, 1401
- TOWER S5 - 702, 1402, 701, 1401
- TOWER S7 - 702, 1402, 701, 1401
- TOWER S8 - 702, 1402, 701, 1401
- TOWER S10 - 702, 1402, 701, 1401
- TOWER S12 - 702, 1402, 701, 1401
- TOWER S15 - 702, 1402, 701, 1401
- TOWER S17 - 702, 1402, 701, 1401
- TOWER S19 - 702, 1402, 701, 1401

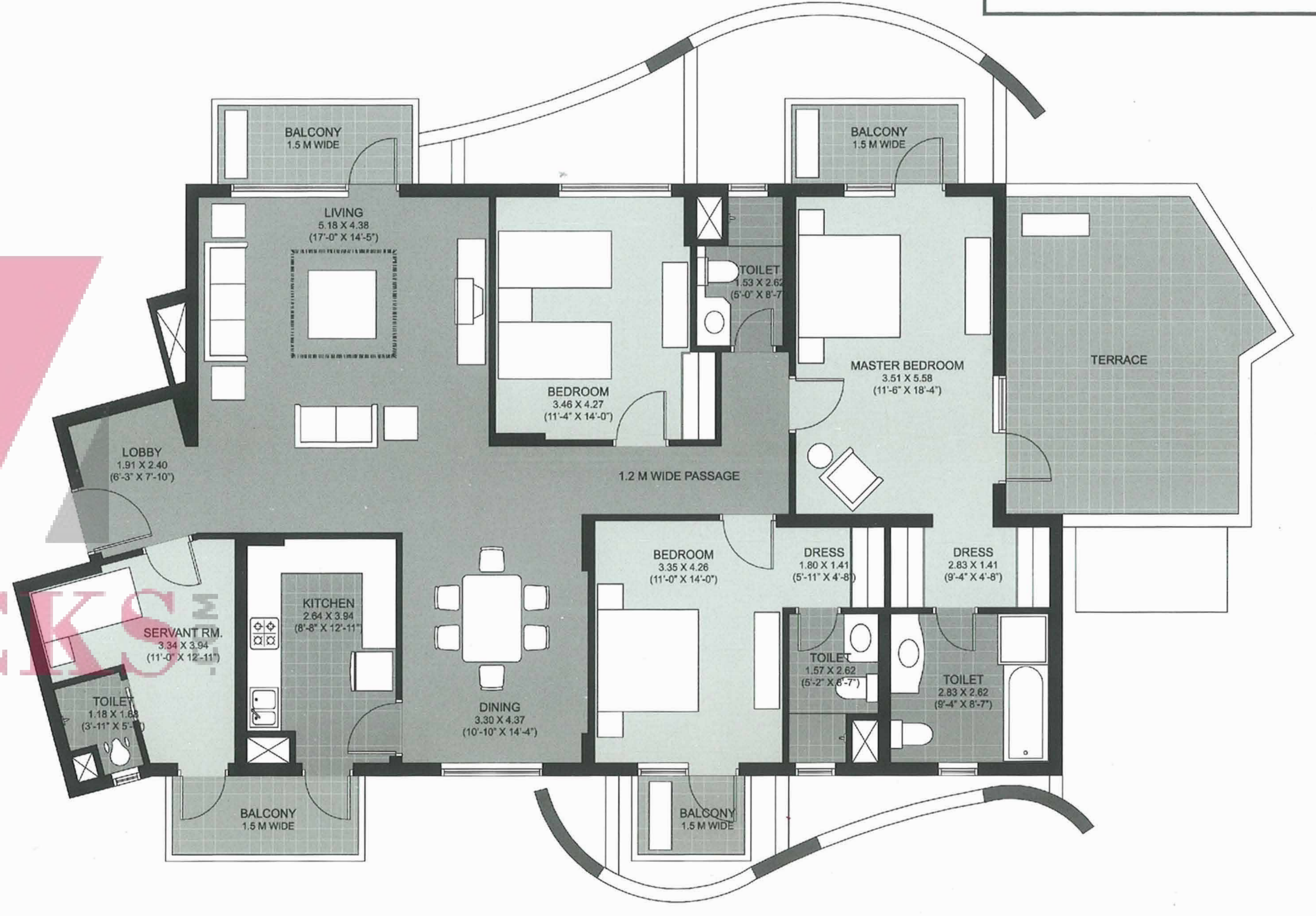
- TOWER S2 - 702, 1402, 701, 1401
- TOWER S4 - 702, 1402, 701, 1401
- TOWER S6 - 702, 1402, 701, 1401
- TOWER S9 - 702, 1402, 701, 1401
- TOWER S11 - 702, 1402, 701, 1401
- TOWER S14 - 702, 1402, 701, 1401
- TOWER S16 - 702, 1402, 701, 1401
- TOWER S18 - 702, 1402, 701, 1401



3 BED ROOM (A) WITH TERRACE

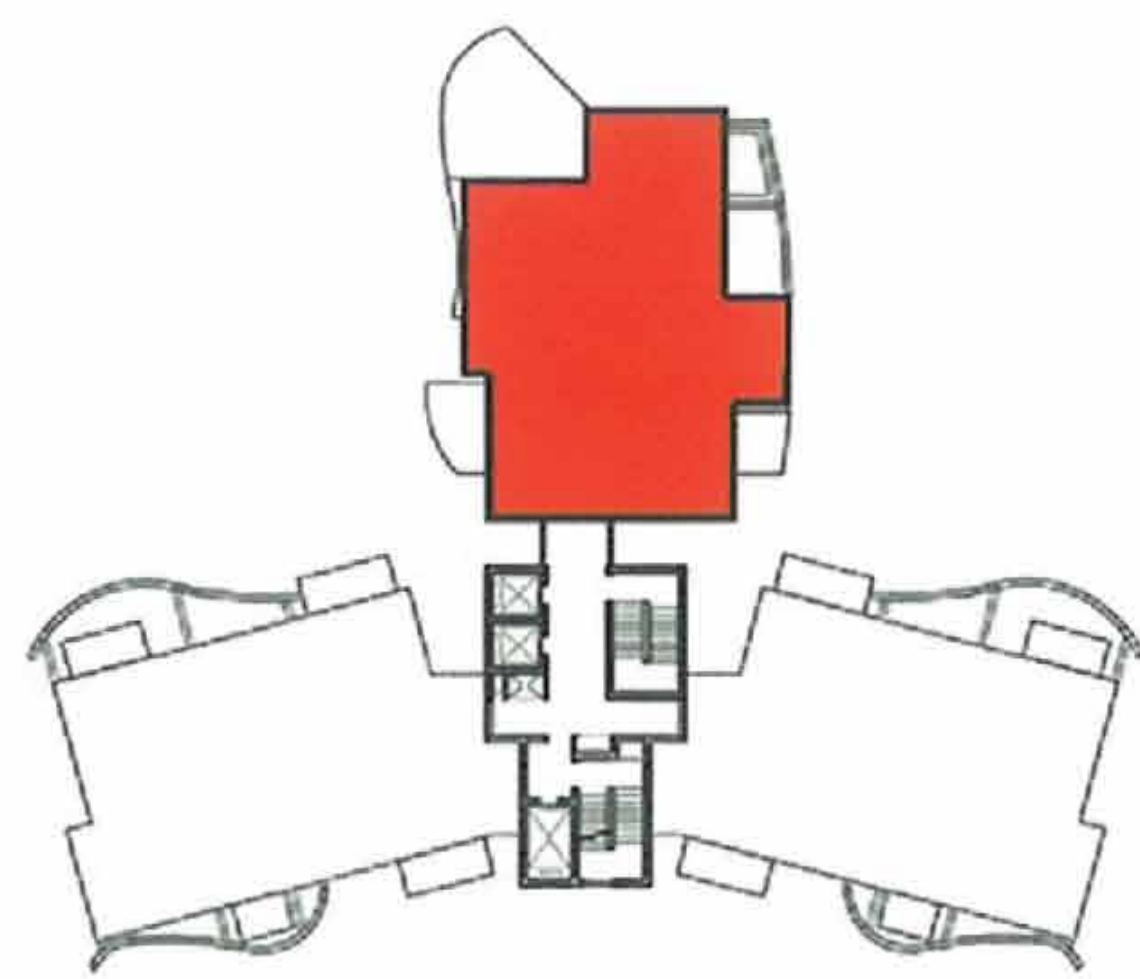


2491 sq.ft. (231.5 sq.mt.)  
Terrace Area - 269 sq.ft. (25 sq.mt.)



2491 sq.ft. (231.5 sq.mt.)  
Terrace Area - 269 sq.ft. (25 sq.mt.)

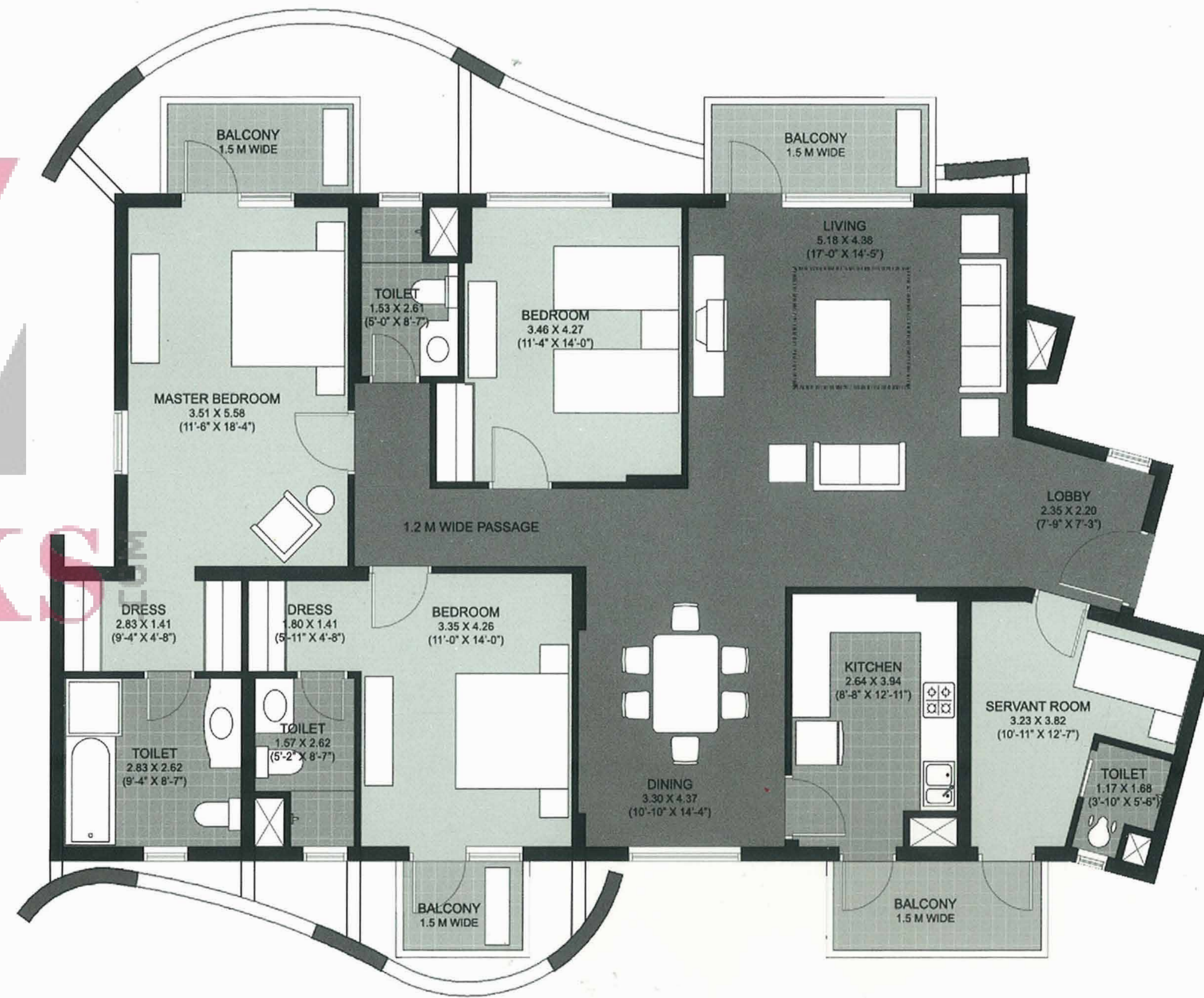
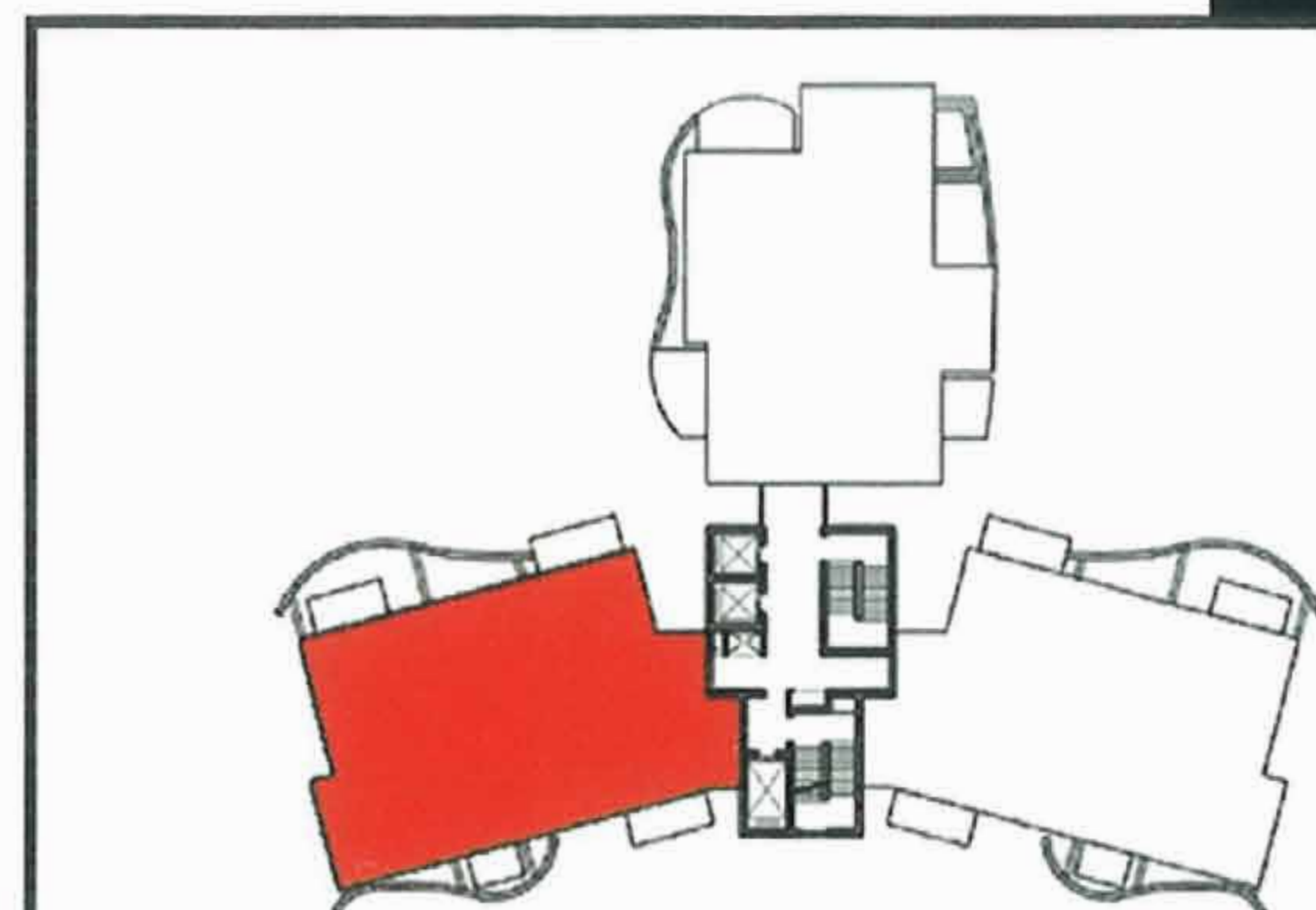
3 BED ROOM (D) WITH TERRACE



2480 sq.ft. (230.5 sq.mt.)  
Terrace Area - 294.5 sq.ft. (27.35 sq.mt.)

- TOWER S1 - 203
- TOWER S3 - 203
- TOWER S5 - 203
- TOWER S7 - 203
- TOWER S8 - 203
- TOWER S10 - 203
- TOWER S12 - 203
- TOWER S15 - 203
- TOWER S17 - 203
- TOWER S19 - 203

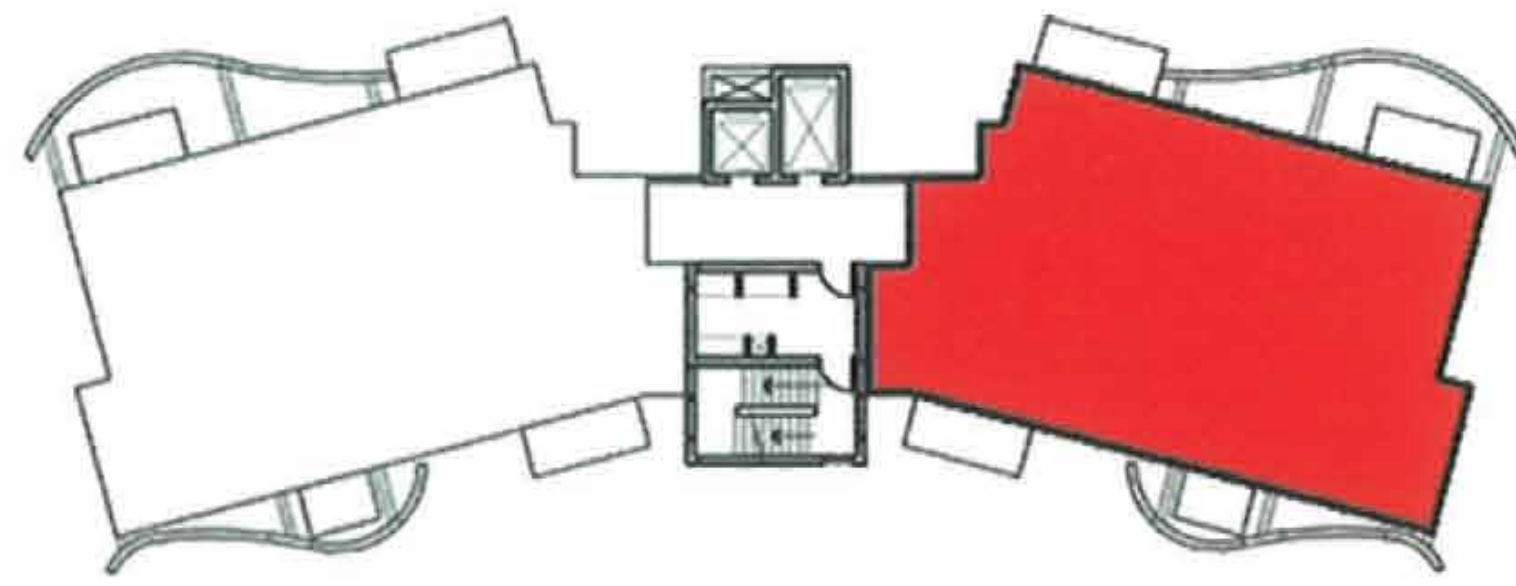
- |          |   |                                  |                                  |           |   |                                  |                                  |
|----------|---|----------------------------------|----------------------------------|-----------|---|----------------------------------|----------------------------------|
| TOWER S1 | - | 202-402<br>802-1002<br>1502-1702 | 201-1201<br>1401                 | TOWER S10 | - | 202-402<br>802-1002<br>1502-1702 | 201-401<br>801-1001<br>1501-1701 |
| TOWER S3 | - | 202-402<br>802-1002<br>1502-1702 | 201-401<br>801-1001<br>1501-1701 | TOWER S12 | - | 202-402<br>802-1002<br>1502-1702 | 201-401<br>801-1001<br>1501-1701 |
| TOWER S5 | - | 202-402<br>802-1002<br>1502-1702 | 201-401<br>801-1001<br>1501-1701 | TOWER S15 | - | 202-402<br>802-1002<br>1502-1702 | 201-1201<br>1401-1701            |
| TOWER S7 | - | 202-1202<br>1402-1702            | 201-401<br>801-1001<br>1501-1701 | TOWER S17 | - | 202-402<br>802-1002<br>1502-1702 | 201-401<br>801-1001<br>1501-1701 |
| TOWER S8 | - | 202-402<br>802-1002<br>1502-1702 | 201-1201<br>1401                 | TOWER S19 | - | 202-1202<br>1402                 | 201-401<br>801-1001<br>1501-1701 |



2491 sq.ft. (231.5 sq.mt.)

3 BED ROOM (A)

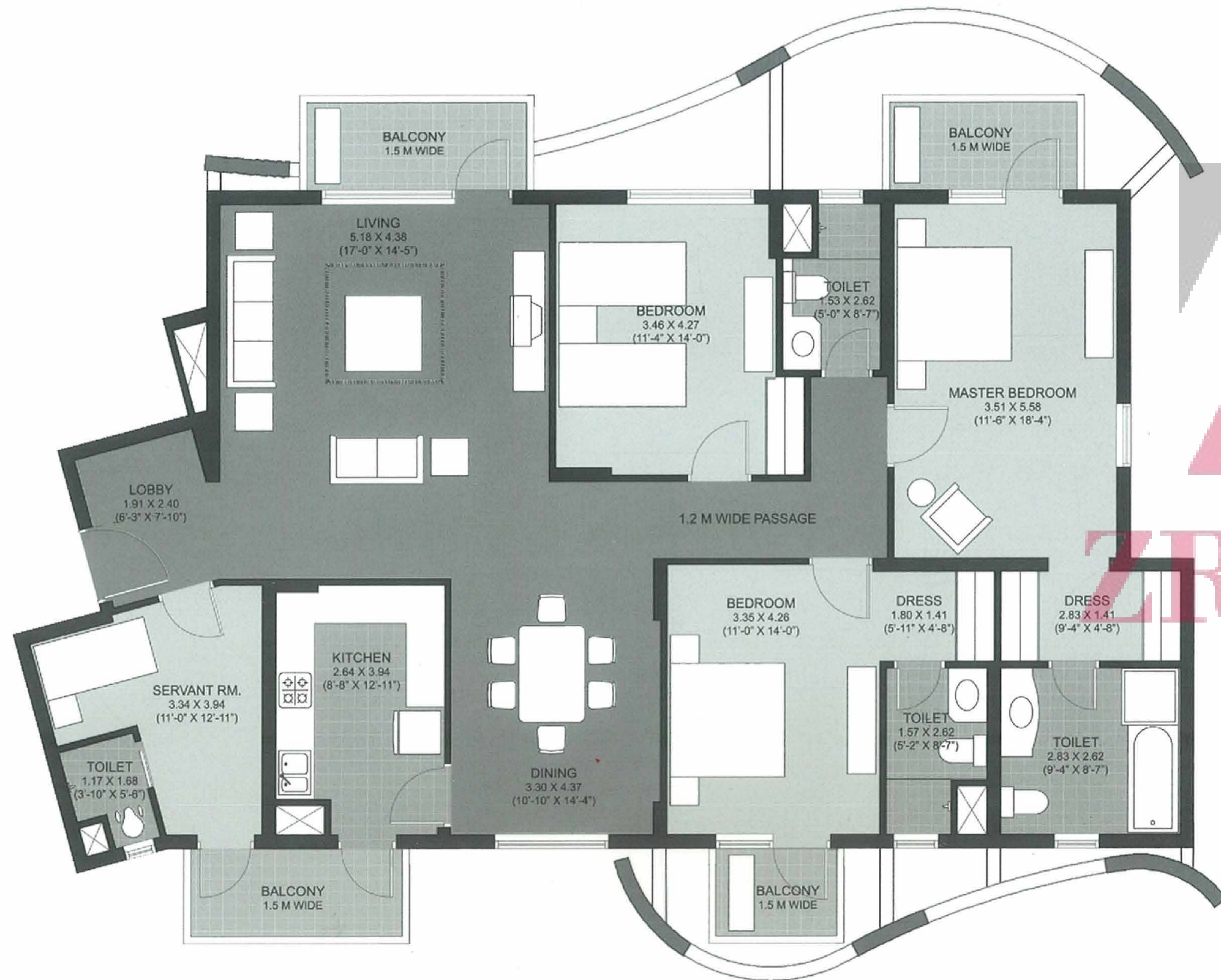
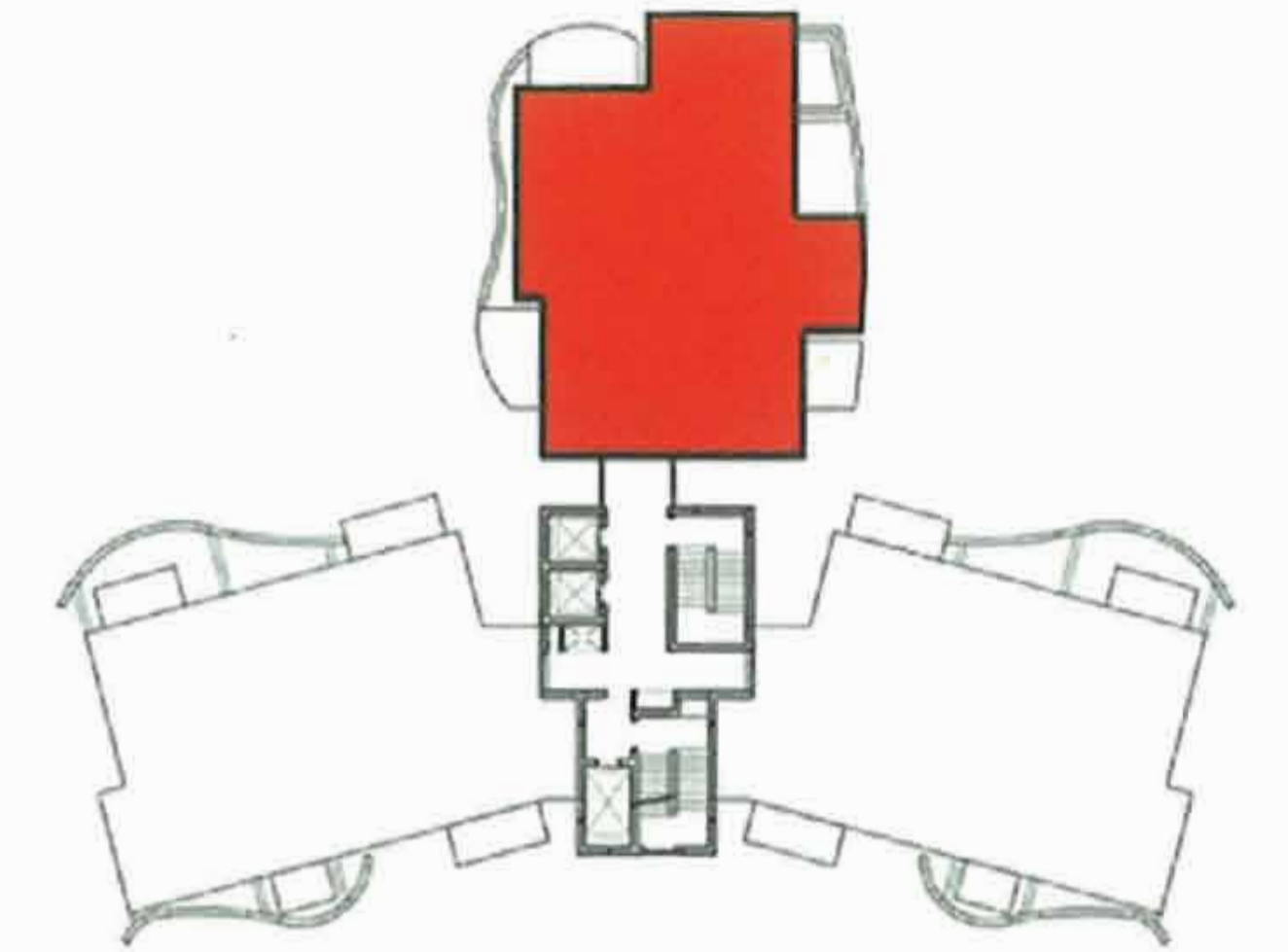
3 BED ROOM (E) WITH TERRACE



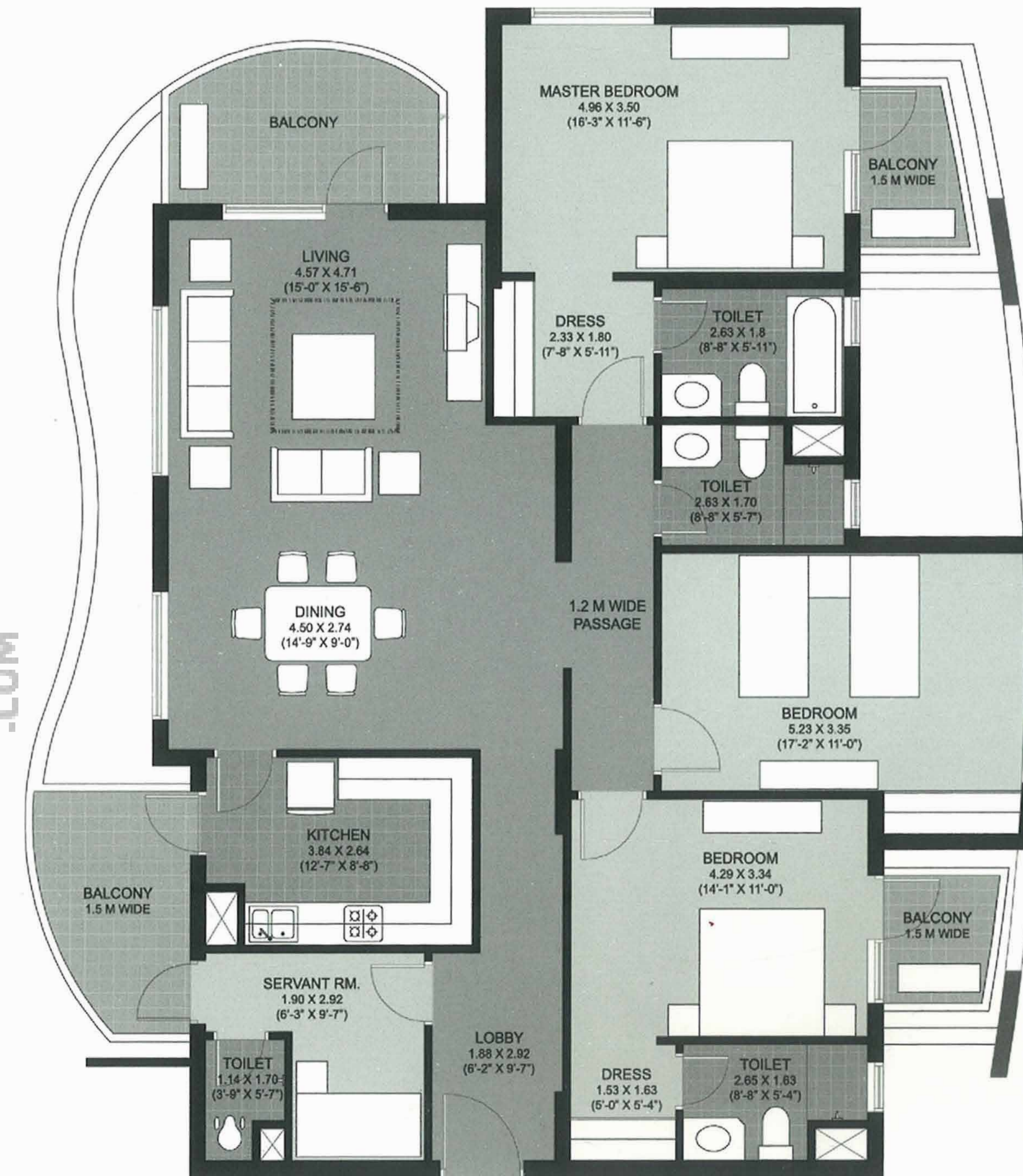
TOWER S2	-	202-402 802-1002 1502-1702	201-401 801-1001 1501-1701
TOWER S4	-	202-402 802-1002 1502-1702	201-401 801-1001 1501-1701
TOWER S6	-	202-402 802-1002 1502-1702	201-401 801-1001 1501-1701
TOWER S9	-	202-402 802-1002 1502-1702	201-401 801-1001 1501-1701

TOWER S11	-	202-402 802-1002 1502-1702	201-401 801-1001 1501-1701
TOWER S14	-	202-1202 1402-1702	201-401 801-1001 1501-1701
TOWER S16	-	202-402 802-1002 1502-1702	201-401 801-1001 1501-1701
TOWER S18	-	202-402 802-1002 1502-1702	201-401 801-1001 1501-1701

TOWER S1	-	303-1003	1403
TOWER S3	-	303-1203	1403
TOWER S5	-	303-1203	1403
TOWER S7	-	303-1203	1403
TOWER S8	-	303-1003	1403
TOWER S10	-	303-1203	1403
TOWER S12	-	303-1203	1403
TOWER S15	-	303-1203	1403
TOWER S17	-	303-1203	1403
TOWER S19	-	303-1003	1403



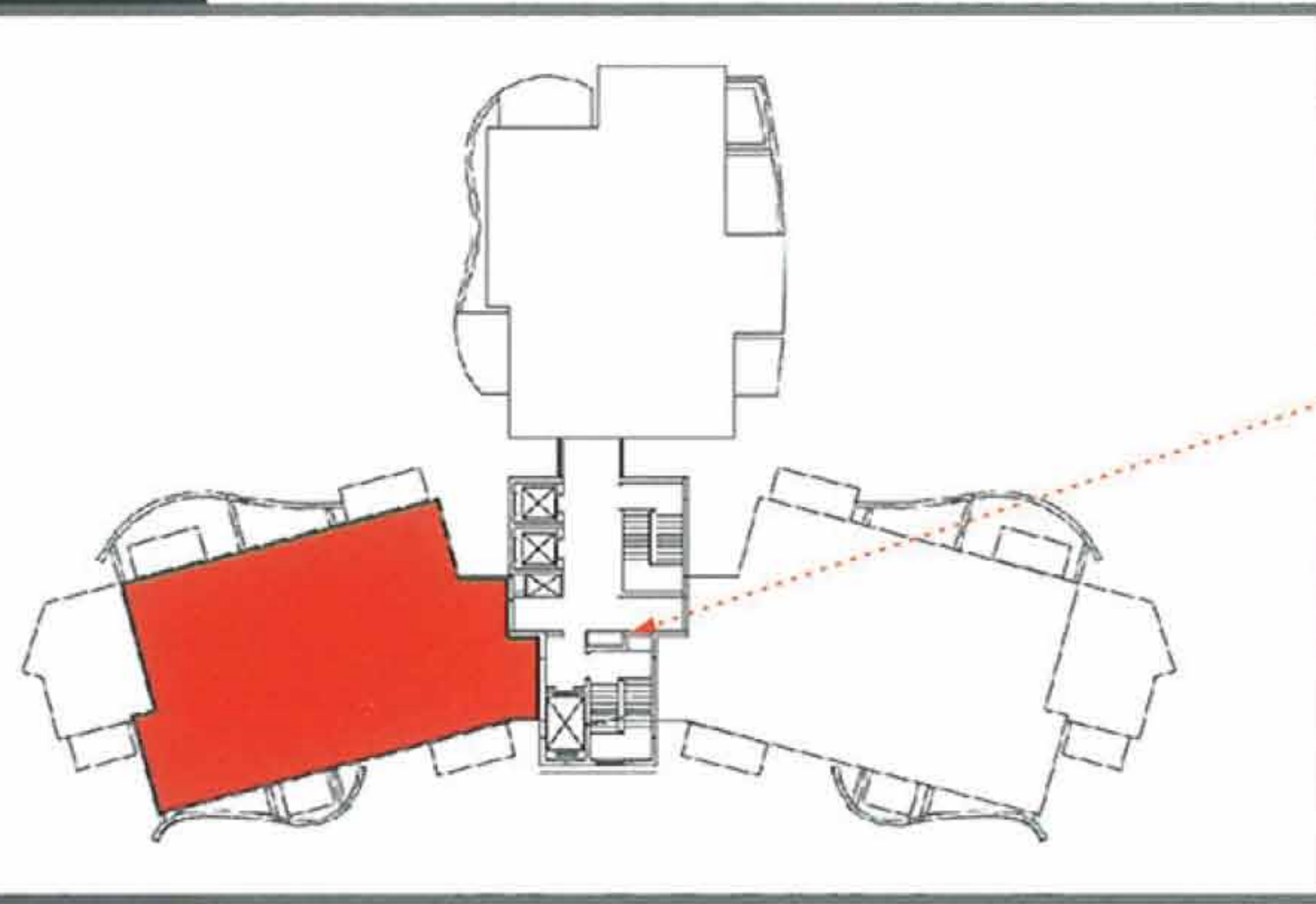
2491 sq.ft. (231.5 sq.mt.)



2480 sq.ft. (230.5 sq.mt.)

3 BED ROOM (D)

3 BED ROOM (E)



SELECTED MARBLE / GRANITE CLADDING & ACRYLIC EMULSION PAINT

POWDER COATED / ANODIZED ALUMINIUM GLAZING

ANTI SKI CERAMIC TILE

LAMINATED WOODEN FLOORING

SEASONED HARDWOOD FRAMES WITH EUROPEAN STYLE MOULDED SHUTTERS

COMBINATION OF STONE & TEXTURED PAINT FINISH (EXTERNAL)

\* VITRIFIED TILES WITH WOODEN SKIRTING

PAINTED IN PLEASING SHADES OF ACRYLIC EMULSION PAINT

PAINTED IN OIL BOUND DISTEMPER

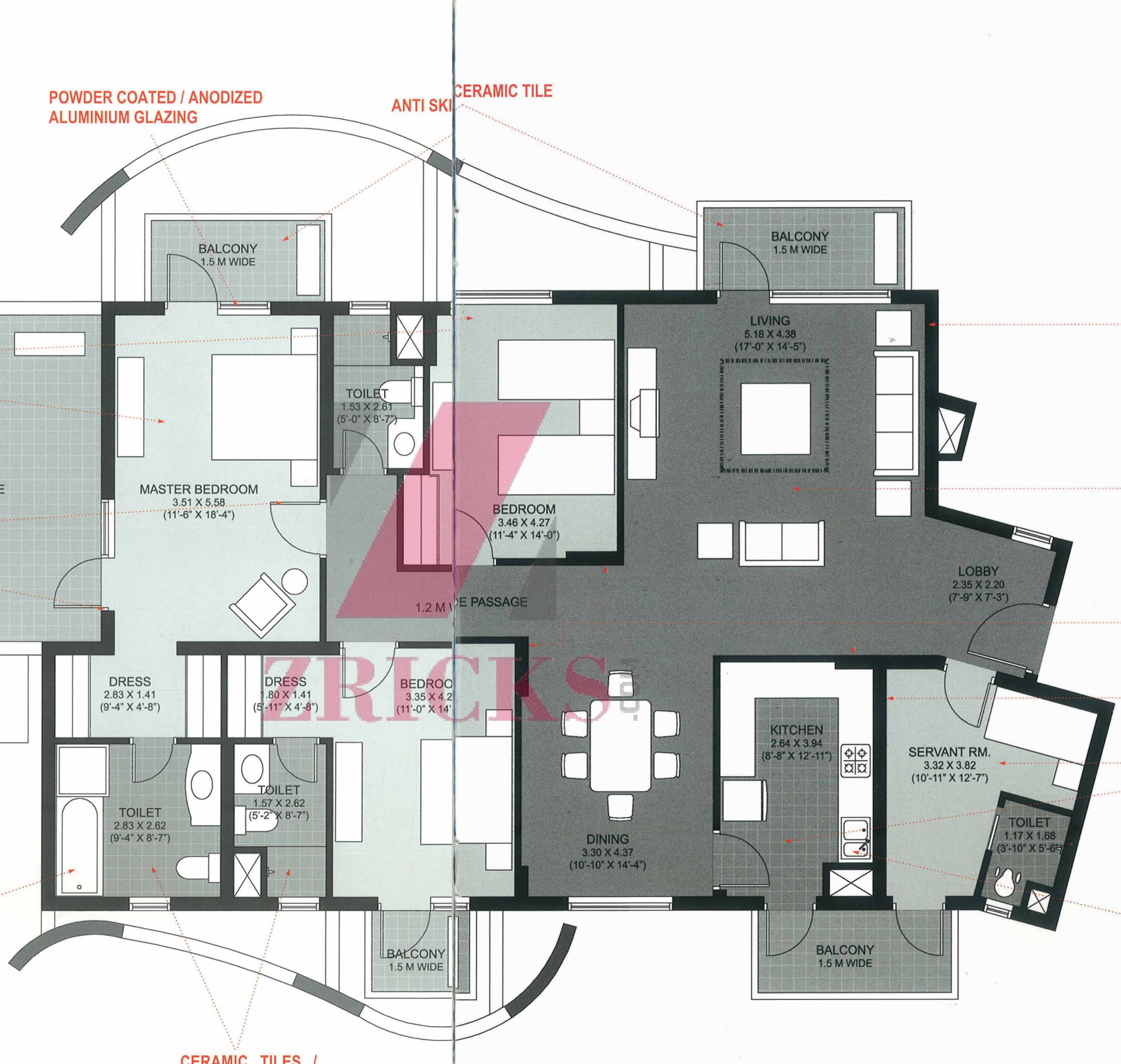
CERAMIC TILES

GRANITE COUNTER WITH DOUBLE BOWL STAINLESS STEEL SINK WITH DRAIN BOARD & GEYSERS

\* BATHTUB WITH JACUZZI

CERAMIC TILES / GRANITE / MARBLE

\* FOR MORE INFORMATION, PLEASE REFER TO THE SPECIFICATION DETAILS.



# SPECIFICATIONS & FACILITIES

## Universal

## International

### Wall Finish

- Living / Dining / Bed Rooms
- Servant's Room
- Lift Lobbies
- External

- : Painted in pleasing shades of Acrylic Emulsion Paint
- : Painted in Oil Bound Distemper
- : Selected Marble / Granite cladding & Acrylic Emulsion paint
- : Combination of Stone & Textured Paint Finish

- Choice of shades of Acrylic Emulsion Paint
- Painted in Oil Bound Distemper
- Selected Marble / Granite cladding & Acrylic Emulsion paint
- Combination of Stone & Textured Paint Finish

### Floorings

- Living / Dining
- Bedrooms
- Servant's Room
- Balcony
- Lift Lobbies
- Terrace

- : Vitrified Tile with wooden skirting
- : Laminated Wooden Flooring
- : Ceramic Tiles
- : Anti Skid Ceramic Tile
- : Selected Granite / Marble
- : Anti Skid Ceramic Tile

- Imported Marble
- Laminated Wooden Flooring
- Ceramic Tiles
- Anti Skid Ceramic Tile
- Selected Granite / Marble
- Anti Skid Ceramic Tile

### Kitchen

- Flooring
- Dado
- Platform

- : Ceramic Tiles
- : Ceramic tiles above working platform, rest Acrylic Emulsion Paint
- : Granite counter with double bowl stainless steel sink with drain board & geyser

- Ceramic Tiles
- Ceramic tiles above working platform, rest Acrylic Emulsion Paint
- Granite counter with double bowl stainless steel sink with drain board & geyser

### Toilets

- Dado
- Floorings
- Fittings

- : Selected ceramic tiles
- : Ceramic Tiles / Granite / Marble
- : Granite / Marble counter, white sanitary fixtures, single lever CP fittings & geysers

- Selected ceramic tiles
- Ceramic Tiles / Granite / Marble
- Granite / Marble counter, wall hung WC, wash basin of matching shades & single lever CP fitting & geysers. Bathtub with Jacuzzi in toilet of Master bedroom

### Windows

- : Powder Coated / Anodized Aluminium Glazing

- Powder Coated / Anodized Aluminium Glazing

### Doors

- : Seasoned hardwood frames with European Style moulded shutters

- Seasoned hardwood frames with European Style moulded shutters

### Electrical

- : Conduit copper electrical wiring for all light & power points

- Conduit copper electrical wiring for all light & power points

### Air-Conditioning

- : Provision of copper conduits and drainage pipes for full air conditioning (for split air conditioning)

- Provision of copper conduits and drainage pipes for full air conditioning (for split air conditioning)

### Security

- : Door Phone

- Door Phone

### Power Backup

- : 100%

- 100%

**FACILITIES :** • 100% Power backup • 24x7 security • Minutes away from the Gurgaon malls

**GREEN AREA :** • Amphitheater • Meadows • Kids themed parks • Spiral mound • Waterplay • Flowering plants • Jogging and walking tracks

**BUILDING :** • Sufficient car parking facility per apartment • Earthquake resistant RCC framed construction with infill brick walls.

**CLUB :** • Swimming pool • Lap pool • Gymnasium • Jacuzzi • Steam room • Squash court • Tennis court • Indoor games room • Television lounge • Business centre • Multi-purpose hall

Note: Perspective View, Floor Plans, Finishes, Specifications, Facilities and Amenities are tentative in nature and are subject to revision without prior notice.



So at THE CLOSE you share the finer things in life with your loved ones. Spacious houses with an airy touch, beautiful rooms with a view, fresh air, open spaces, a host of facilities just a touch away. Everyone loves to be close at THE CLOSE.

**And best of all, what ever you do, keep the ones you love very very close... at THE CLOSE.**



© K-Factor, www.kfact.com. Printed at Thomson Press

UNITECH LIMITED, Unitech Signature Towers, Ground Floor, South City-I, NH-8, Gurgaon-122 001.  
Tel.: 0124-408 2020, 0124-408 6677. Fax: 0124-408 3355.  
Sales Office (Delhi): 6, Community Centre, Saket, New Delhi-110 017. Tel.: 011-4166 4040. Fax: 011-2685 7338  
E-mail: theclose@unitechgroup.com Website: www.unitechgroup.com



Pioneer Profin Limited

unitech<sup>®</sup>