

DLF
BELVEDERE
PLACE

Luxury homes
that don't cost the earth.

MAKE SURE YOU GET YOURS TODAY

DLF Belvedere Place



Every once in a little while, there comes a home option that is a little extra special, a little out of the ordinary. Every home option in DLF Belvedere Park is just

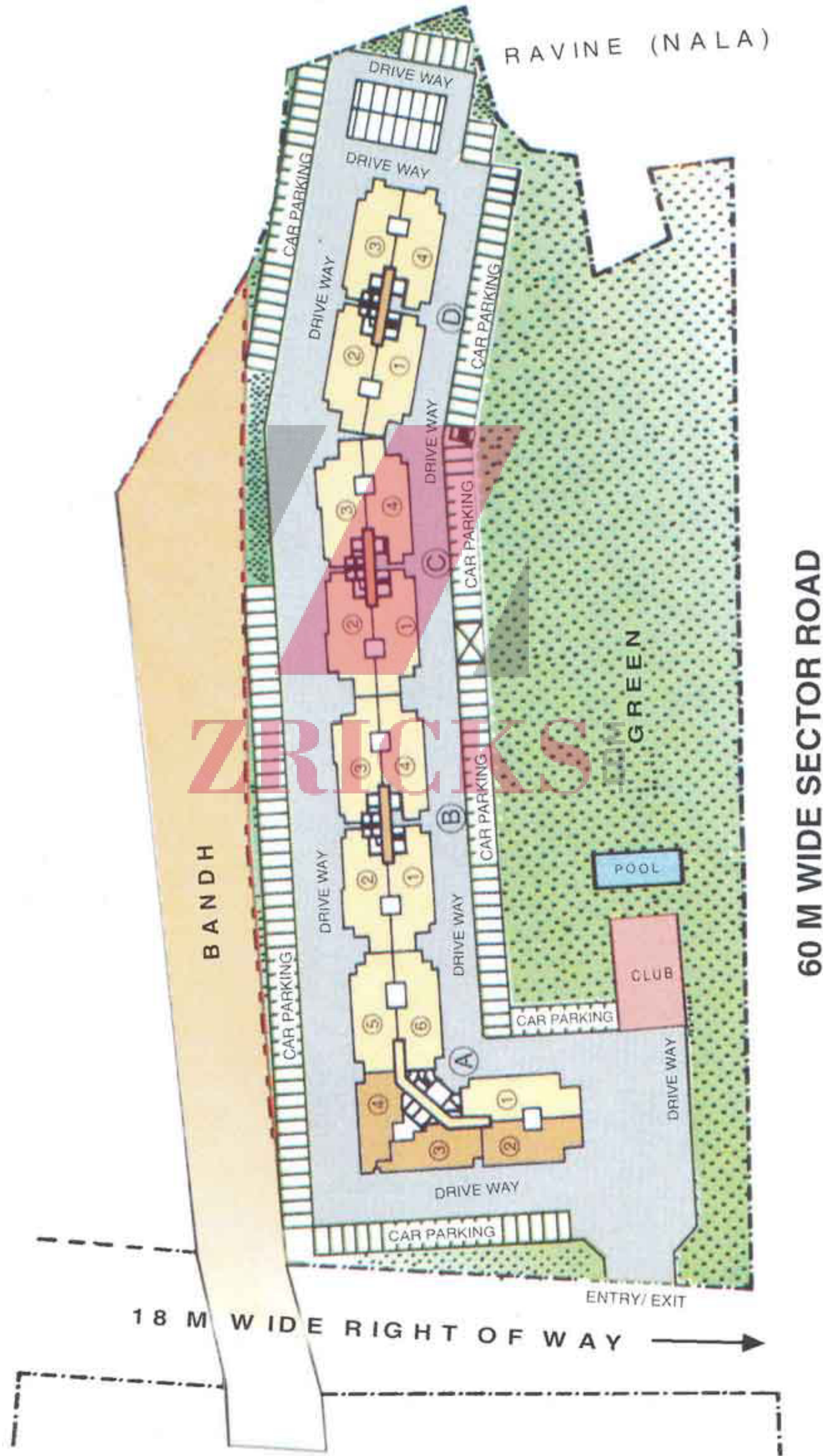


that. For very solid reasons:

- An integral part of the exclusive 85-acre Belvedere Place apartment complex
- Well-located - in DLF City, Phases II & III, that have always been considered extra prime
- An integral part of DLF City, with a comprehensive infrastructure of educational, medical and commercial facilities that are already operational
- Club with swimming pool and gymnasium
- Designed by the renowned architectural firm, Architect Hafeez Contractor
- Efficient space planning in each apartment
- Optimal specifications; no unnecessary frills that add more cost than value
- Power back-up for your luxury home upto 6.25 KVA per apartment
- Lower maintenance costs due to more thoughtful use of flooring materials

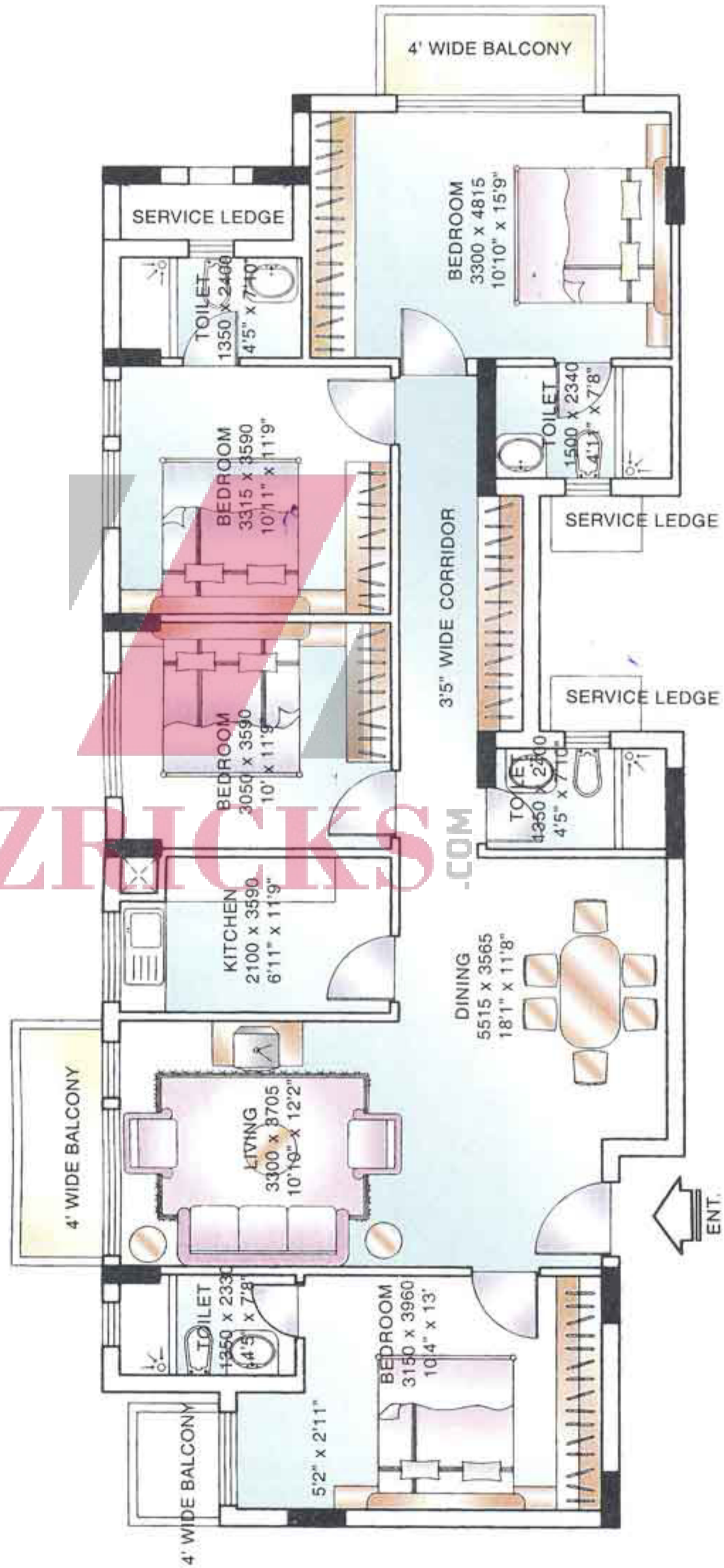


SITE LAYOUT

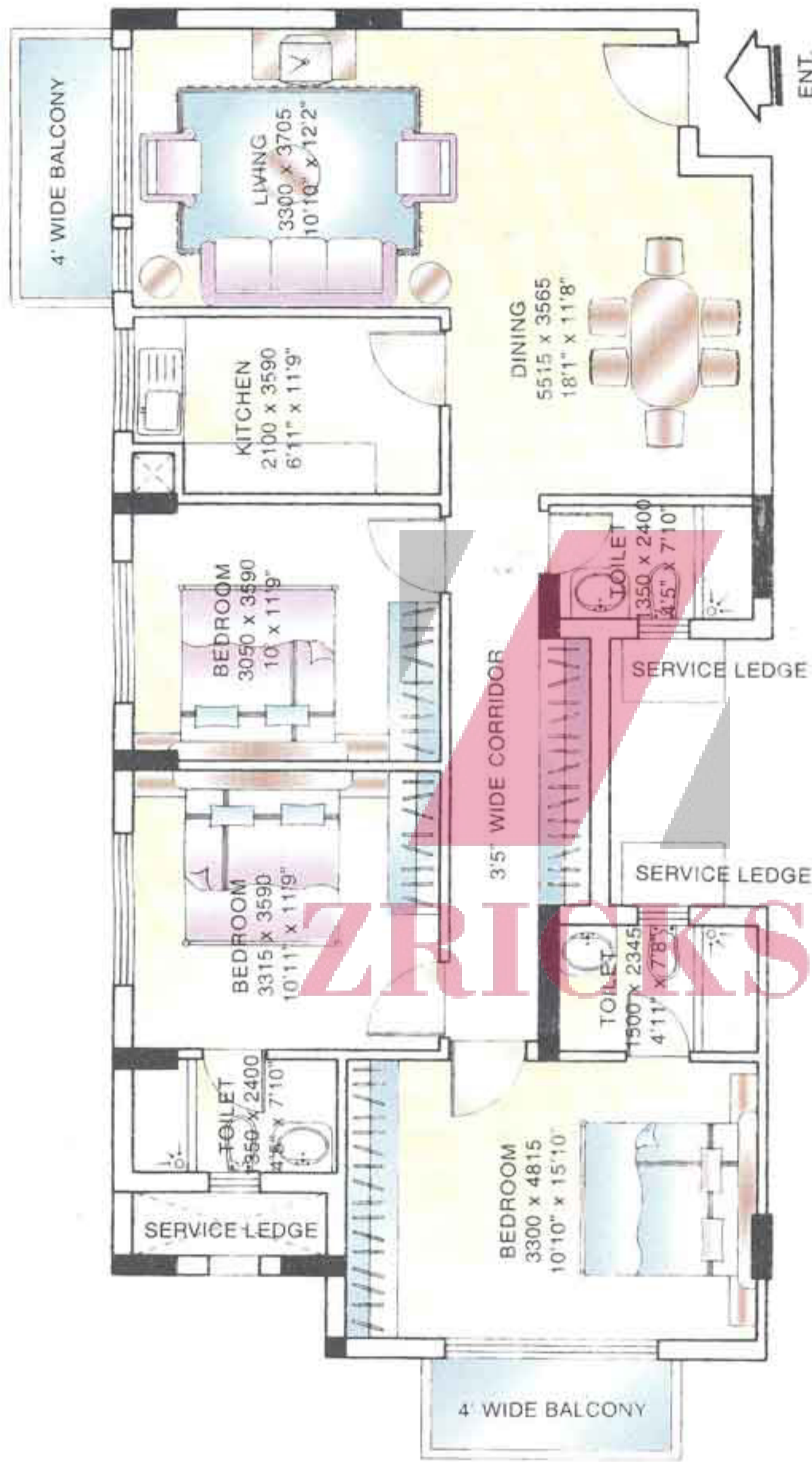


FLOOR PLAN

Unit - 1
Block - A
Area - 1718 sq.ft.
Accommodation
4 Bedroom,
Living - Dining,
3 Balconies



FLOOR PLAN



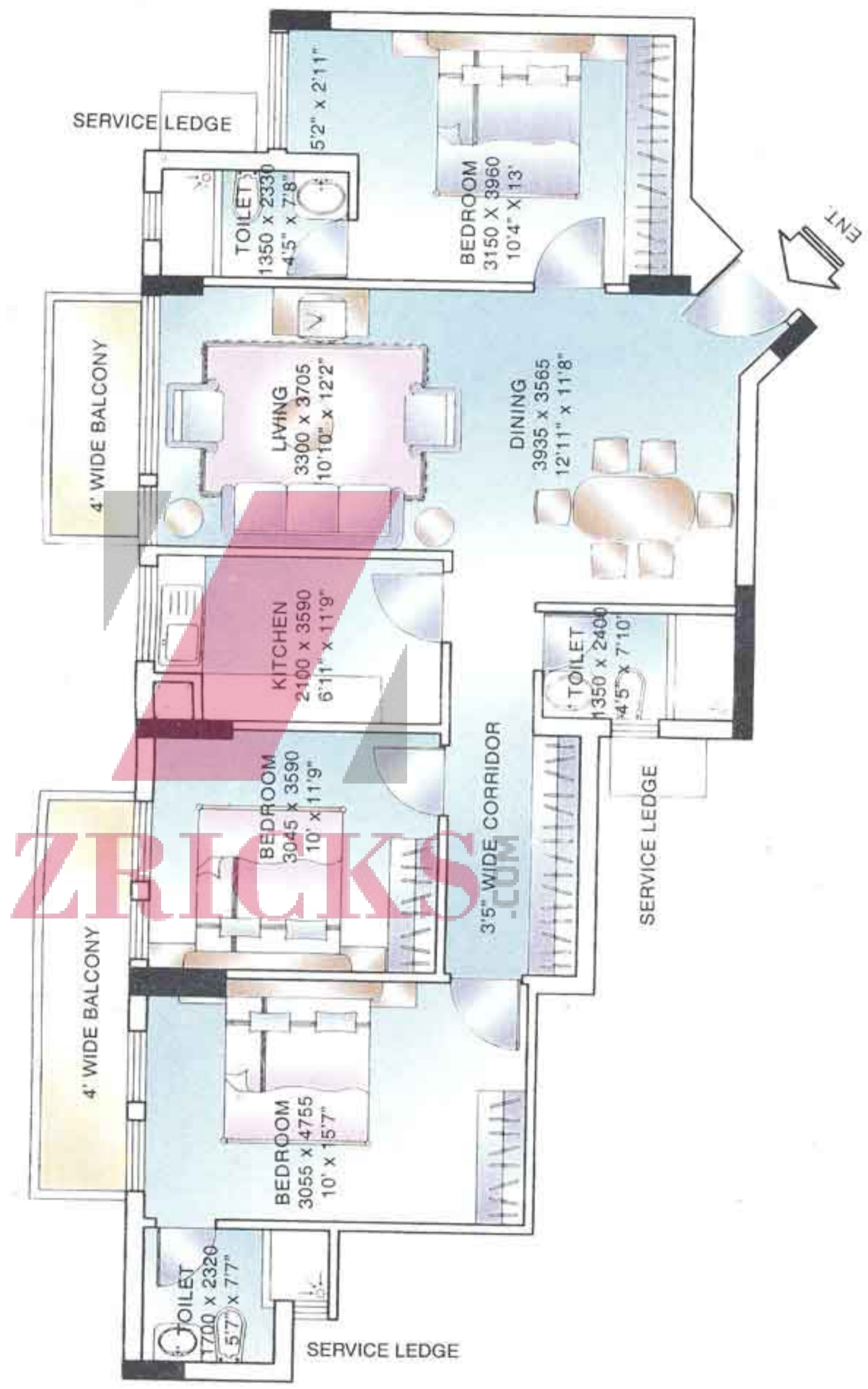
Unit - 2&3
Block - A
Area - 1443 sq.ft.

Accommodation
3 Bedroom,
Living - Dining,
2 Balconies

ZRIKKS
.COM

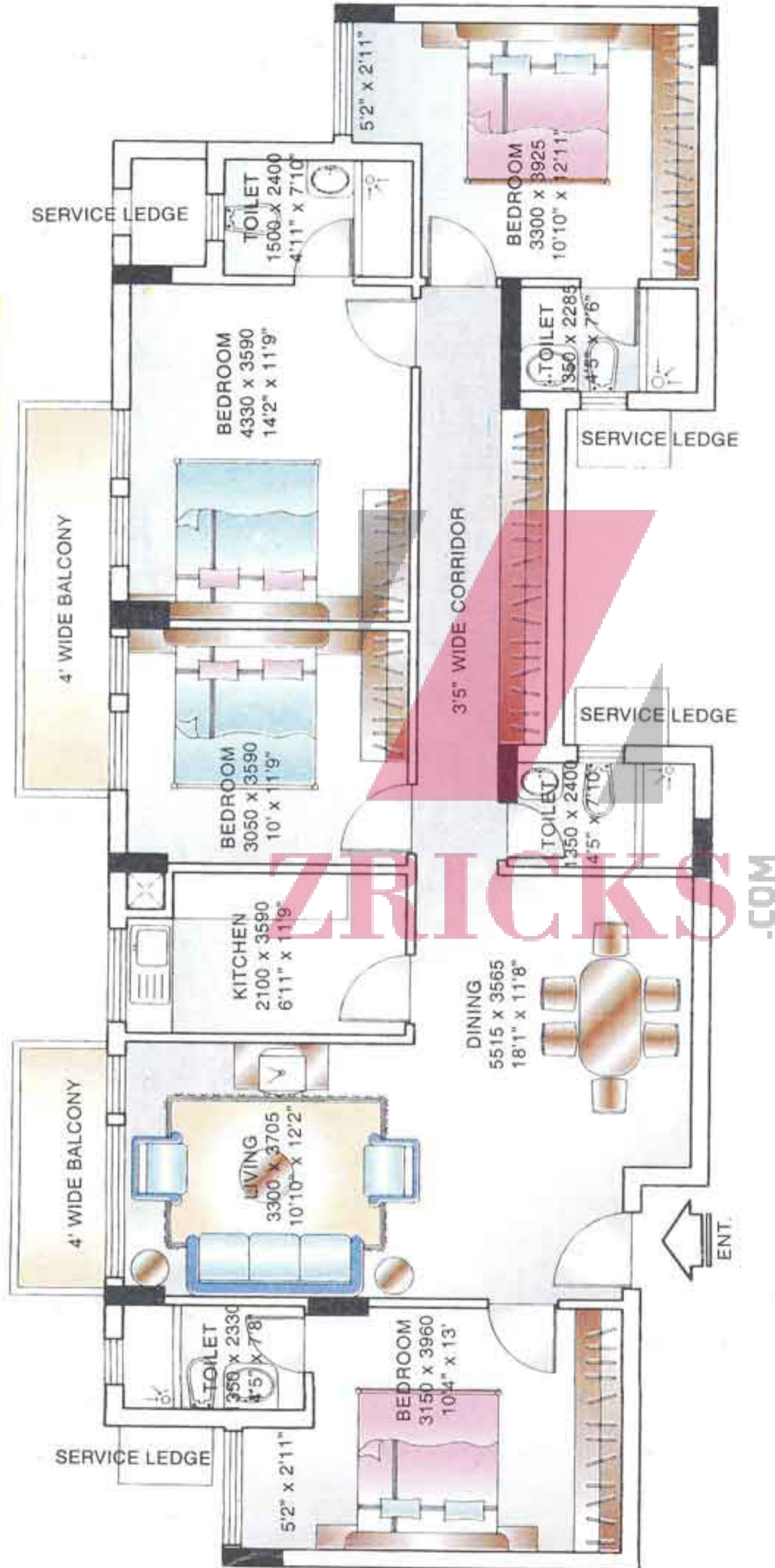
FLOOR PLAN

Unit - 4
Block - A
Area - 1414 sq.ft.
Accommodation
3 Bedroom,
Living - Dining,
2 Balconies



ZRICKS.COM

FLOOR PLAN

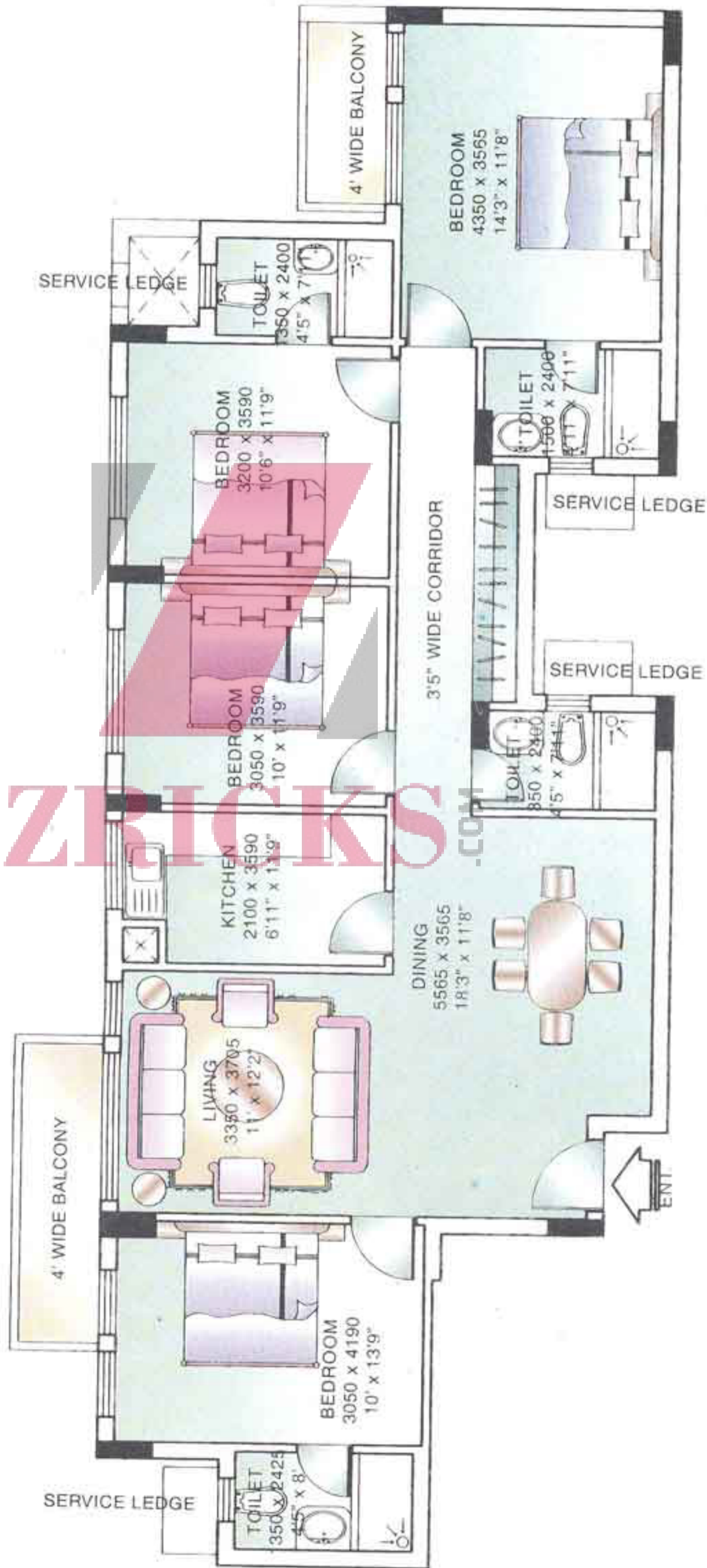


Unit - 5
Block - A
Area - 1762 sq.ft.
Accommodation
4 Bedroom,
Living - Dining,
2 Balconies

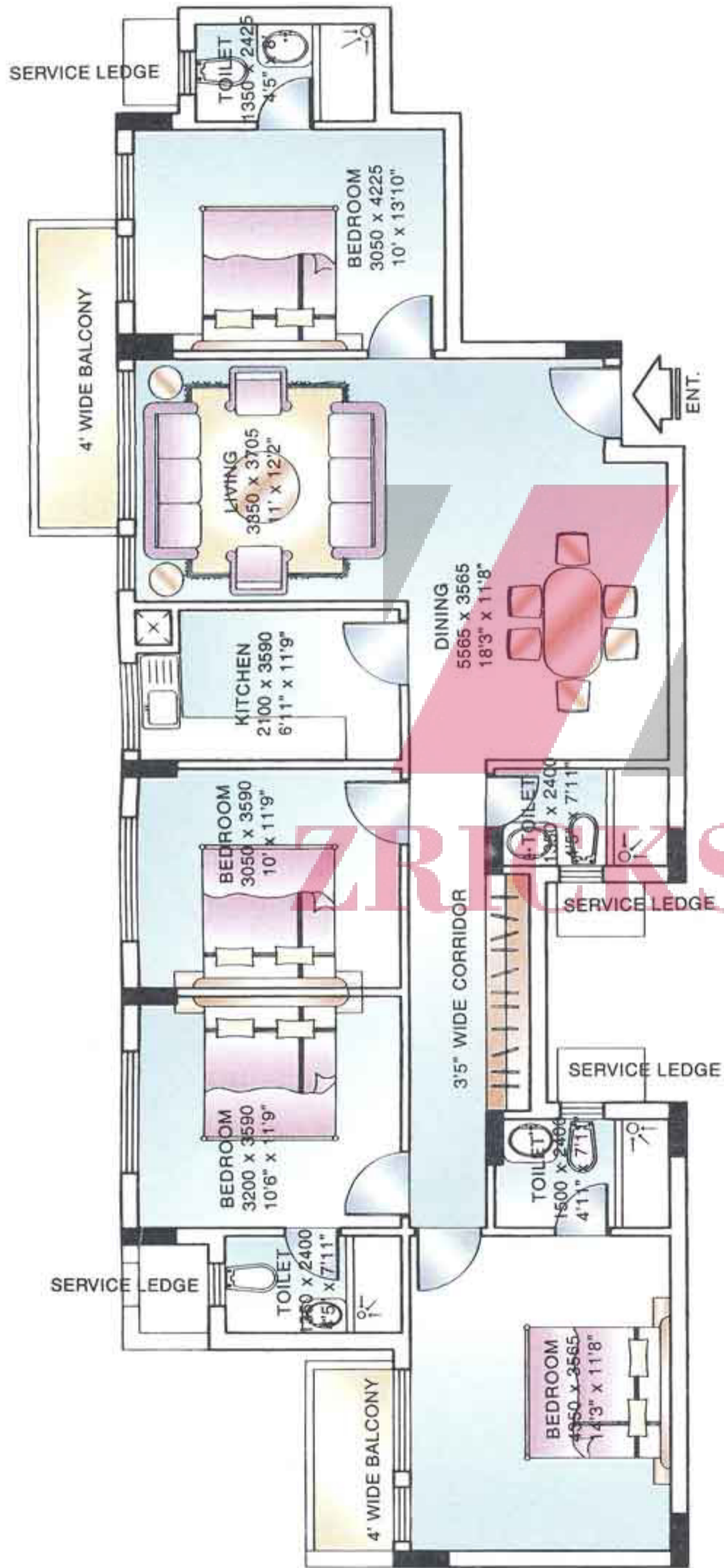
ZRICKS.COM

FLOOR PLAN

Unit - 1
 Block - B&C
 Area - 1696 sq.ft.
 Accommodation
 4 Bedroom,
 Living - Dining,
 2 Balconies



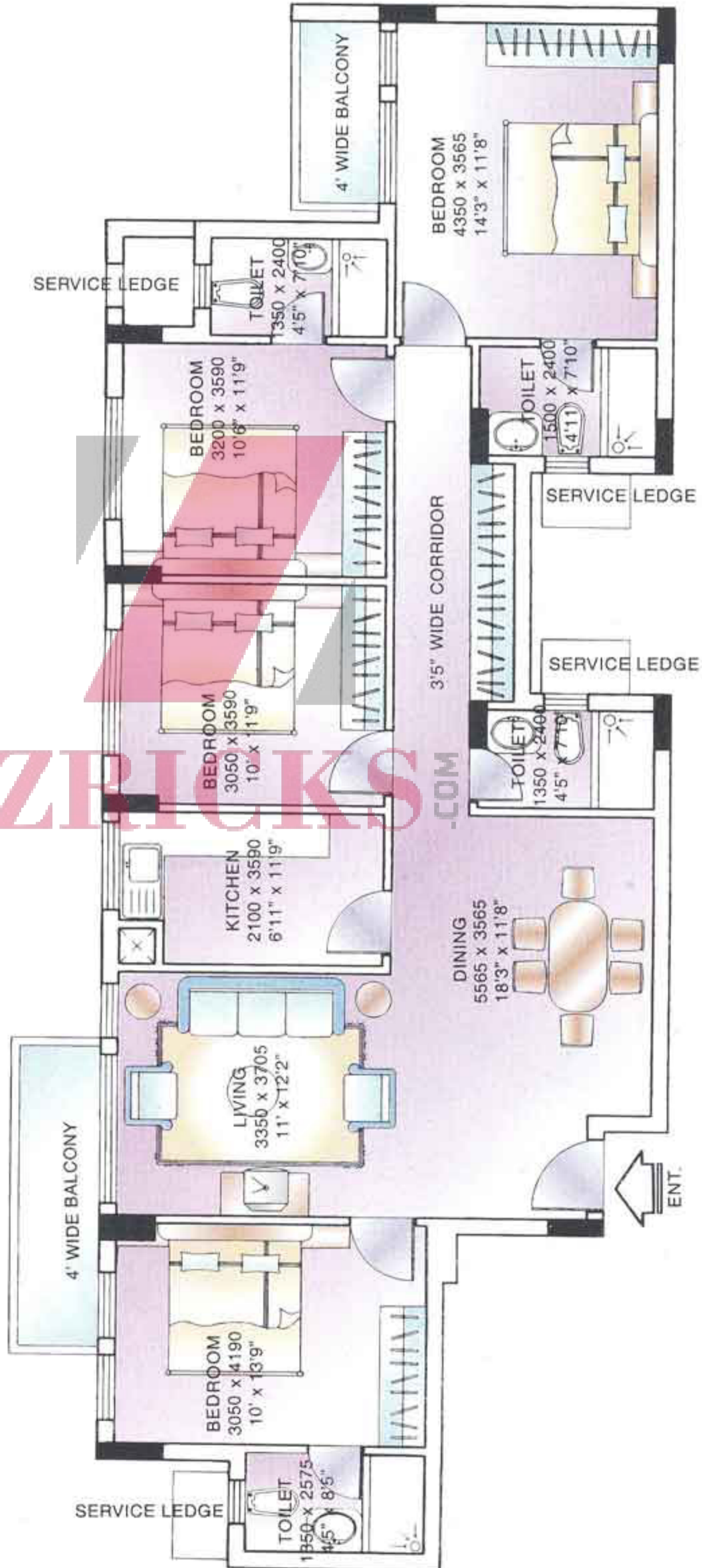
FLOOR PLAN



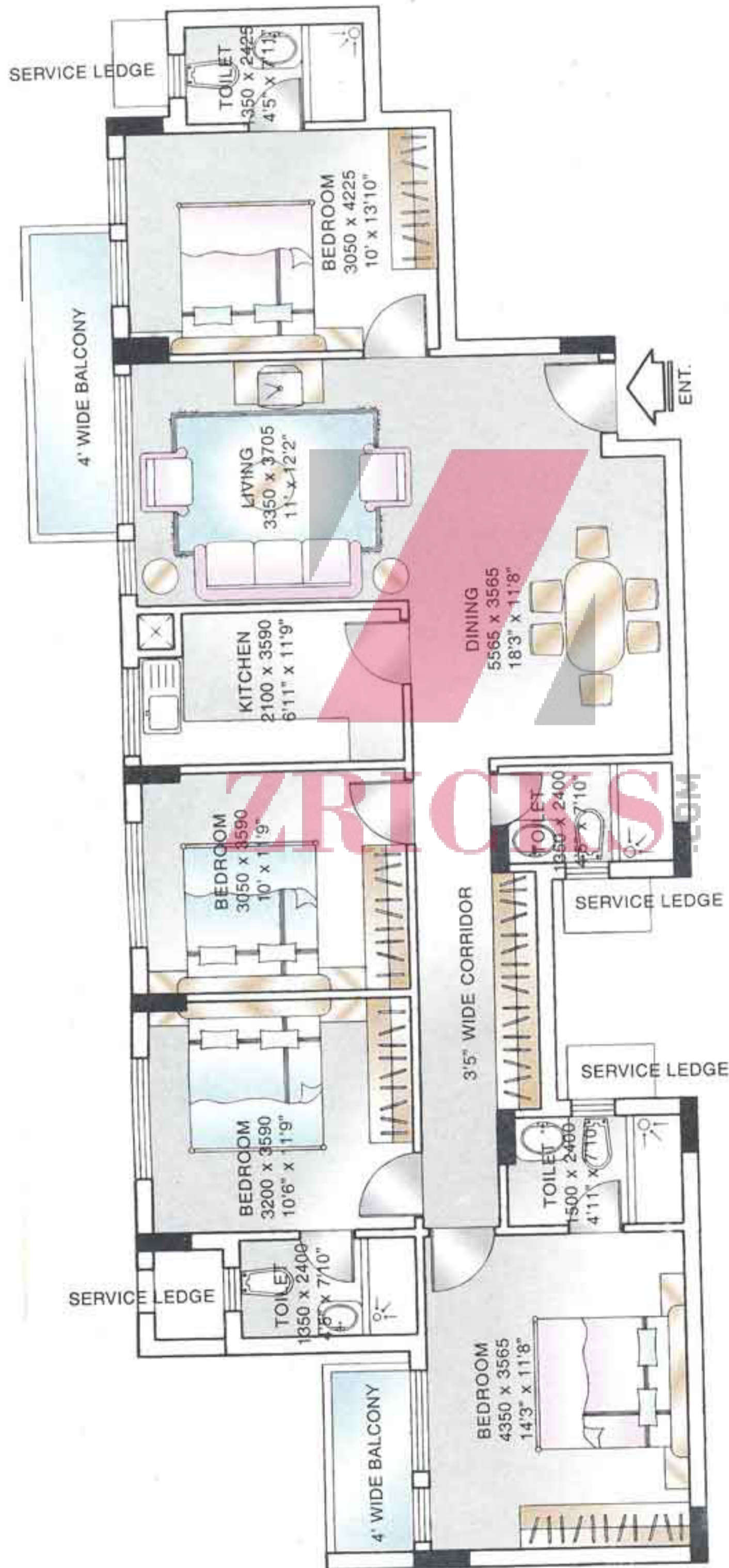
Unit - 2
Block - B&C
Area - 1701 sq.ft.
Accommodation
4 Bedroom,
Living - Dining,
2 Balconies

FLOOR PLAN

Unit - 1
Block - D
Area - 1706 sq.ft.
Accommodation
4 Bedroom,
Living - Dining,
2 Balconies



FLOOR PLAN



Unit - 2
Block - D
Area - 1711 sq.ft.
Accommodation
4 Bedroom,
Living - Dining,
2 Balconies

APARTMENT SPECIFICATIONS

FLOORS

| | |
|--|--------------------------------------|
| Living / Dining / Passage & Lobby within Apartment | Marble. |
| Kitchen & Toilets | Ceramic Tiles. |
| Bedrooms & Balconies | White Mosaic - Cast-in-situ / Tiles. |

WALLS

| | |
|---|--|
| Living / Dining / Bedrooms / Passage & Lobby within Apartment | Plastic (Acrylic) Emulsion paint. |
| Kitchen & Toilets | Combination of ceramic tiles, Oil bound distemper and / or Mirror. |

COUNTERS

| | |
|-------------------|-------------------------------|
| Toilets & Kitchen | Counters in Granite / Marble. |
|-------------------|-------------------------------|

FITTING / FIXTURES

| | |
|-------------------|--|
| Toilets & Kitchen | Single Lever CP fittings / White Chinaware. Stainless Steel Single bowl, single drain board kitchen sink. |
|-------------------|--|

DOORS & WINDOWS

| | |
|--------------------------|---|
| Internal Doors | Polished / Painted frames made of hardwood / pressed metal. Entrance door - Teak veneered polished shutter / moulded skin door. Internal door - decorative flush shutter / moulded skin door. |
| External Doors & Windows | Aluminium. |
| Toilet Windows | Aluminium / Pressed steel. |
| Hardware | |

ELECTRICALS

Plate type switches & sockets, copper wiring (fittings like fans, light fixtures, geysers, appliances etc.. not provided). Back up power of 6.25 KVA / Apartment.

- Marble / Granite being natural materials have inherent characteristics of colour and grain variations.

CLUB FACILITY

Party Room, Swimming Pool, Change Rooms & Gymnasium.

All floor plans, layout plans & specifications are indicative and are subject to change as decided by the company or by a