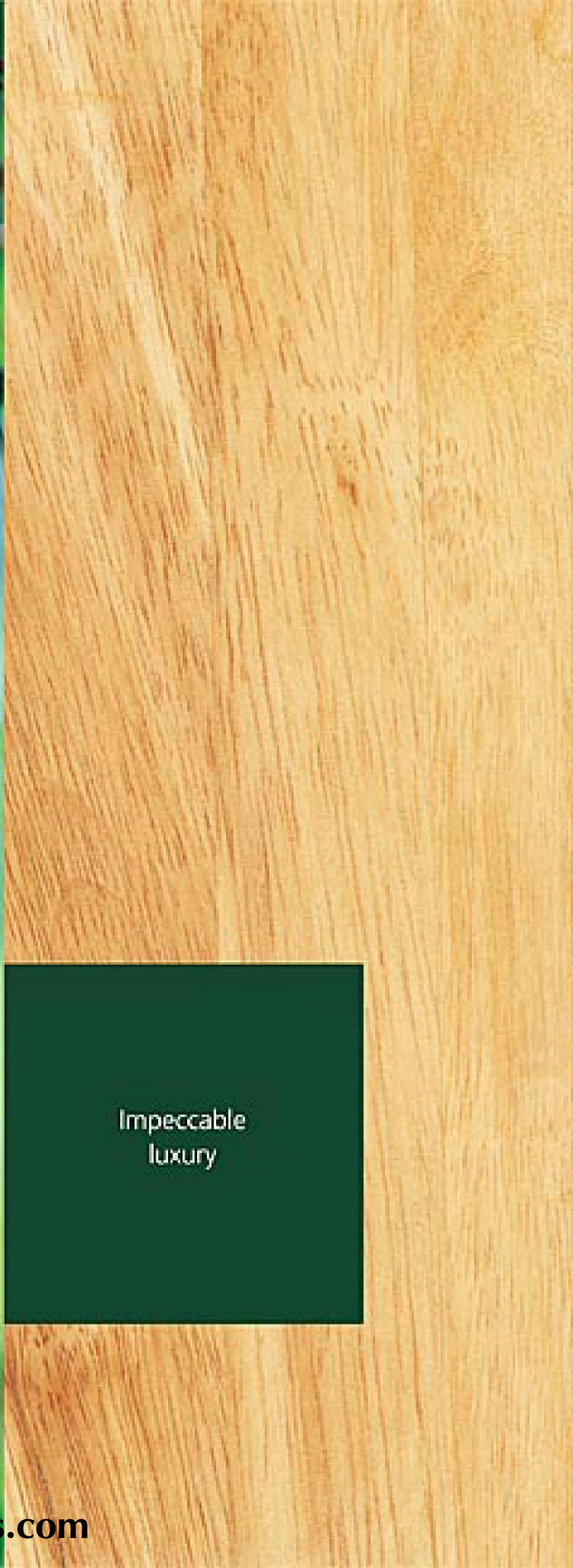




THE DECK

www.Zricks.com





Impeccable
luxury





THE DECK

BPTP welcomes you to a lustrous lifestyle at The Deck. Acquire an address that magnifies your accomplishments and celebrates your success. With just over thirty duplex apartments on offer, exclusivity is the first and last word at The Deck.

What is a day at The Deck like? Let us indulge you on a flight of imagination. Picture yourself living a lavish lifestyle replete with every luxury and reflective of your stature. Wake up in a carefully crafted home, where opulence is incidental. A home where every moment spent is nothing short of a true delight. Wake up to the sunlight as it streams in to your spacious bedroom. Relish a hearty breakfast in your double height dining room. And as the sun sets, watch the city light up from your capacious balcony as you toast your every accomplishment.

A singular tower of bespoke opulence, The Deck features amenities and services that guarantee its residents every comfort. Drop those extra kilos at the private gym reserved for the tower's privileged few. Plunge into the swimming pool after a rigorous workout or just lie back in a chaise lounge chair at the pool deck. And if that's not rejuvenating enough, the tower's juice bar promises to re-energize you with its delicious array of smoothies and beverages.

With every comfort guaranteed, we haven't forgotten to assure you of complete peace-of-mind. A video door phone facility ensures complete control over access to your home, and enhanced security for your family. Laundromat facilities, the spa at the gym and dedicated basement parking lot all add up to create a lifestyle of absolute comfort and complete luxury.

The Deck is an enchanting world of elegance and extravagance – after all it's a true reflection of your lifestyle.





DOUBLE HEIGHT CEILING AT THE DECK

In a world where most homes are glorified pigeon holes we give you a floor to floor height of 21 ft. in the dining area. It's the kind of space your friends and visitors will eye with envy. Much like the elegant crystal chandelier you always had an eye on but never had the space to bring home.





JUICE BAR


AT THE DECK

Refreshment, rejuvenation and replenishment – the Juice Bar offers you all this and more. Grab a smoothie on your way to work, satisfy that post-lunch sweet craving with a creamy tub of yoghurt, or re-energize yourself with a chilled glass of juice after a strenuous workout. The Juice Bar is the perfect place for in-tower recreation.



ROOF TOP SWIMMING POOL*

AT THE DECK



Only an elevator ride from your home is The Deck's stunning swimming pool. Designed to ensure complete relaxation, the infinity pool is the perfect place to unwind after a busy day at work. Dive into its azure waters and leave every stress behind.



GYMNASIUM AT THE DECK

A temple for those who worship health and fitness, The Deck's gym is spacious and features state-of-the-art equipment. Trendy design and the finest amenities combine to give you an ace fitness centre designed to meet your exercise needs.

www.Zricks.com





SPA

AT THE DECK

The Deck's spa offers refuge, quiet and contentment. It is a haven of peace and solitude; a cocoon of tranquility and wellness. For the chosen few residents of the community, rejuvenation and serenity are never too far away.

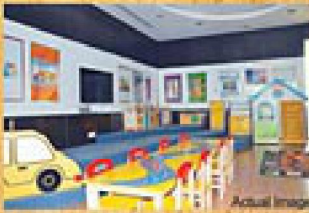
www.Zricks.com



READING ROOM

AT THE DECK

Sit back and relax with your favourite book at The Deck's library. The comfortable armchairs and pleasant ambience promise you the perfect setting to kick off your shoes and soak in the pleasures of a great book. So be it that juicy murder mystery or a classic love story – at The Deck you know exactly where to go for some quality reading time.



Children's Play Room

Decorated in bright colours and equipped with interesting games, cool toys and crayons of every colour, your children will love to play and spend time here. You can keep your kids engaged in this colourful play room while you enjoy a quite candlelit dinner with your better half.



The Card Room

A game of bridge or round of rummy, the card room has been designed for the adventurous at heart. An ambience that is a perfect combination of the elegant and the casual, this card room is the perfect place to unwind. We'll bet anything on it.



Reading Room

A comfortable nook to curl up with your favourite book, the Reading Room is the perfect place for some quality time with literature. Lay back in one of the many comfortable armchairs and flip your way through that riveting science fiction thriller or that heartwarming family drama.



Gym

Burn those calories and hit your fitness peak at The Club's well-equipped gym. Shed the kilos with a cardio workout or build those muscles while weight training. No matter how tired you are, the steam & sauna room promises the perfect dose of relaxation after your workout.



Multi-purpose hall

Sanctuary also houses a multi-purpose hall where you can hold lavish dinners, plan celebrations and arrange events which will be talked about in all the right social circles.



Squash court

The Club features a tournament-sized squash court for the sports' enthusiasts. Whether you hit the court before work or after, you're guaranteed a great workout.



Swimming pool

The Club's pristine swimming pool is the perfect way to beat the heat and pack in some exercise. Lounge by the pool side after an invigorating swim and immerse yourself in the beautiful surroundings.



SANCTUARY

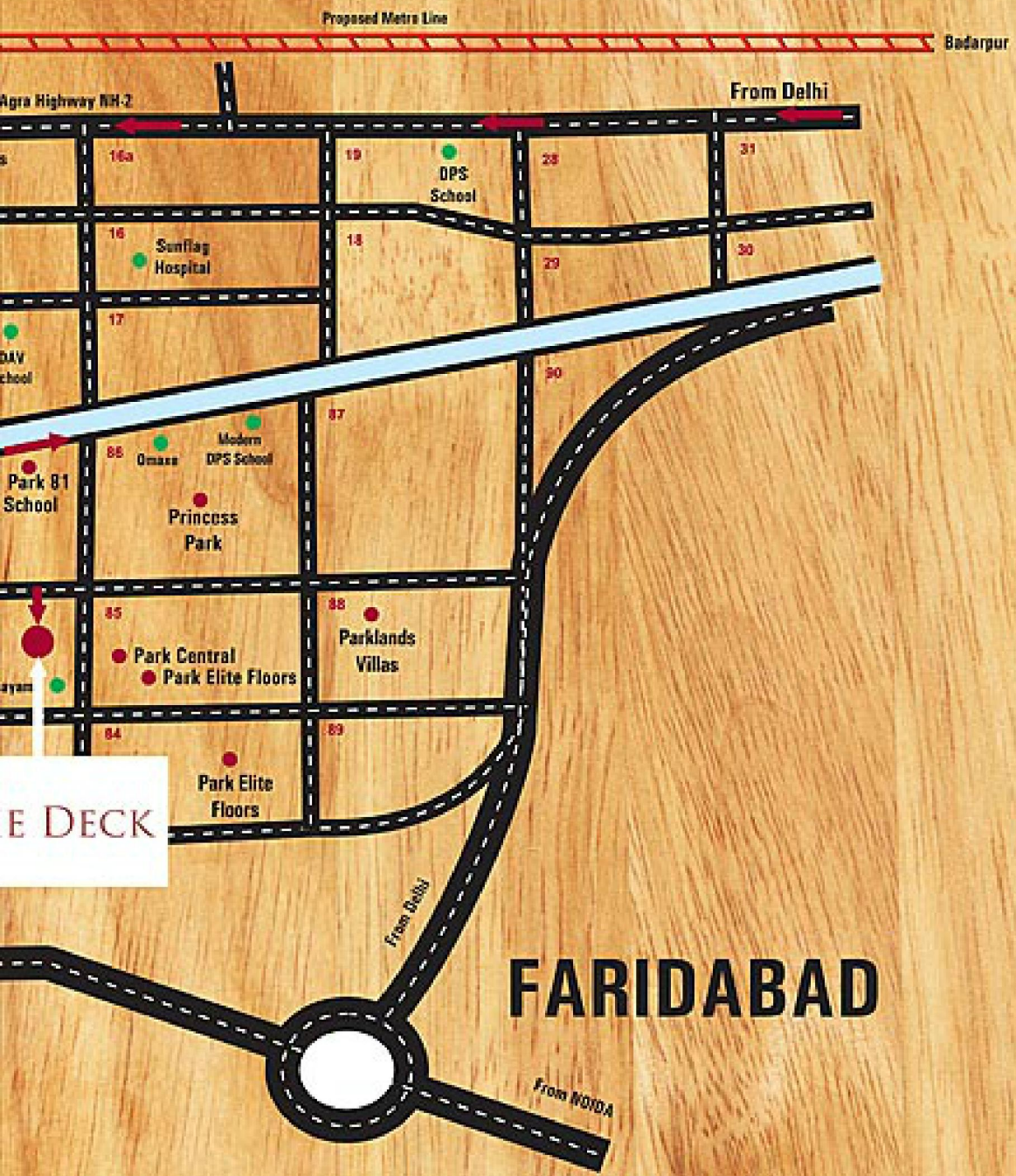
THE LUXURY CLUB

At The Deck, we've made every arrangement to satisfy your entertainment needs. The Club, a fully-functional recreational facility, offers The Deck's residents multiple facilities and conveniences. Take a dip in the swimming pool, head to the gym for your daily dose of fitness or to the reading room for some quiet time with your favourite book. The Club is opulent and elegant and offers you multiple avenues to spend quality time with your family and unwind with your friends.

www.Zricks.com

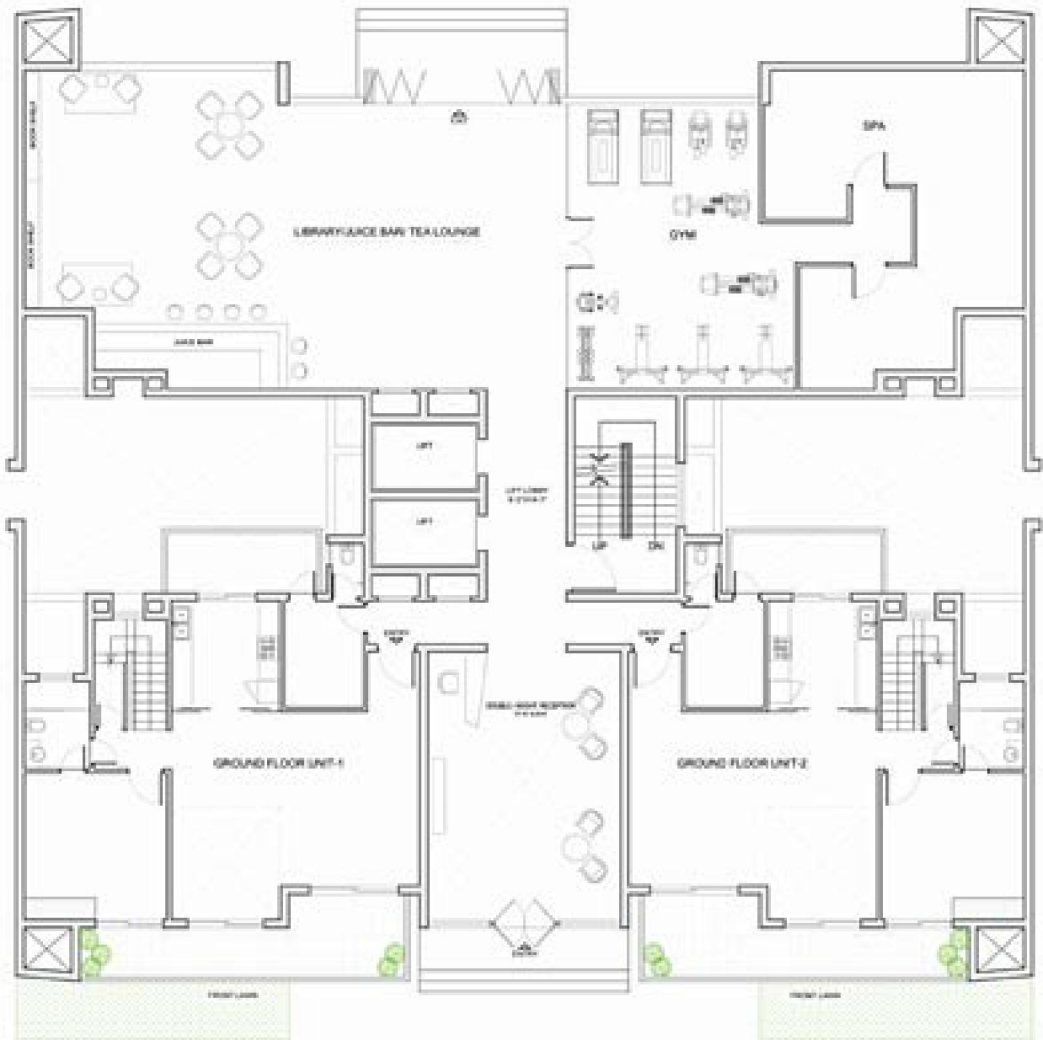


LOCATION MAP

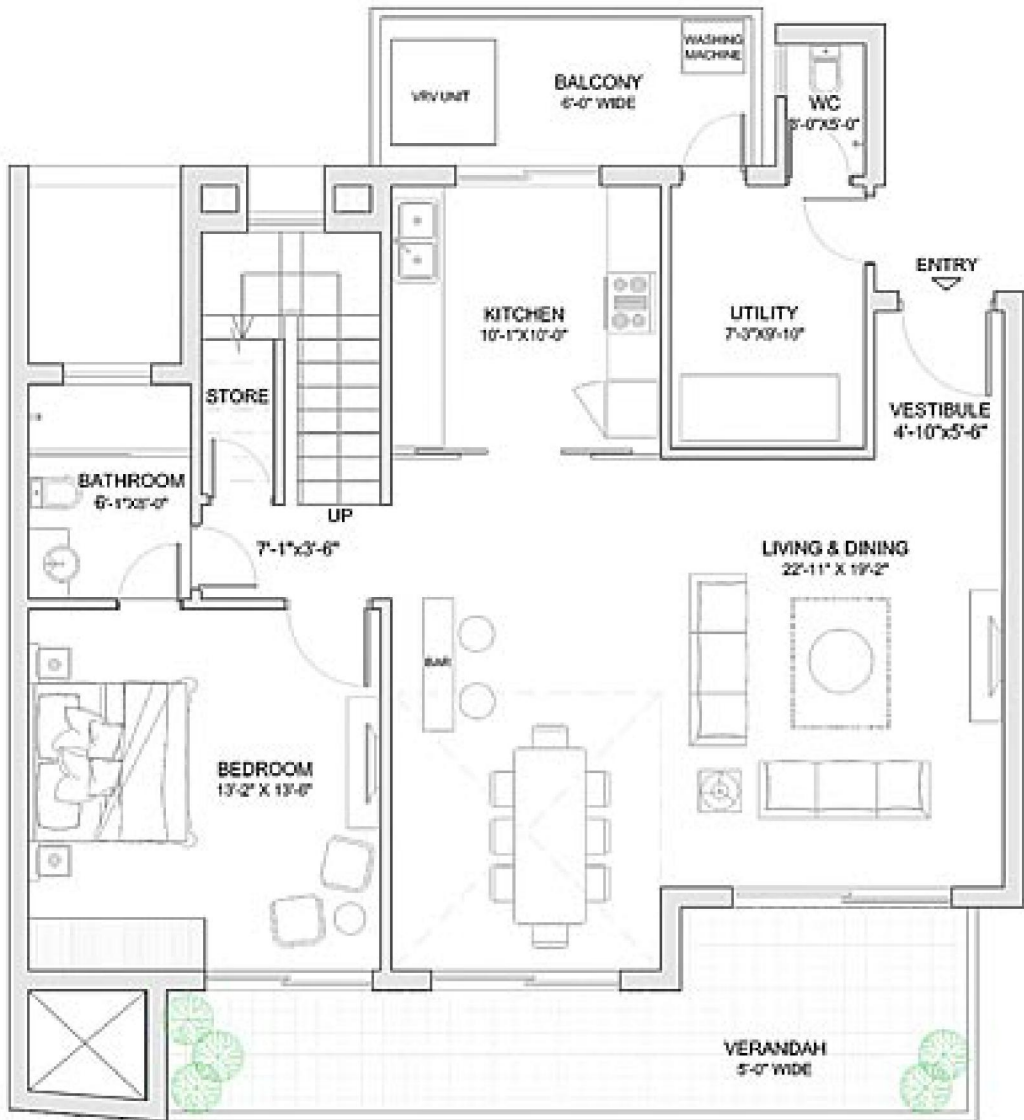


FARIDABAD

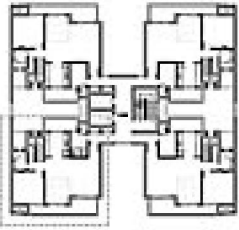
Not to scale



GROUND FLOOR

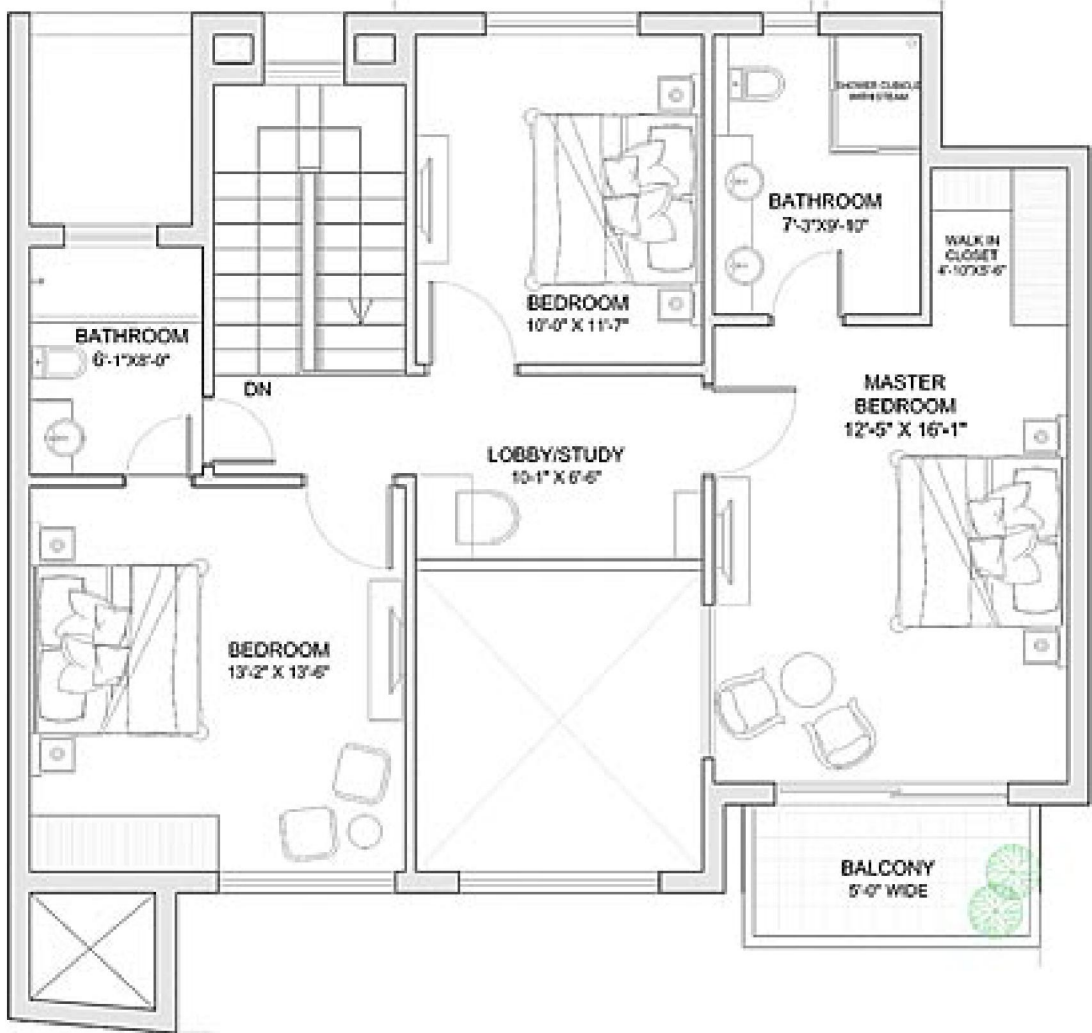


LOWER FLOOR PLAN

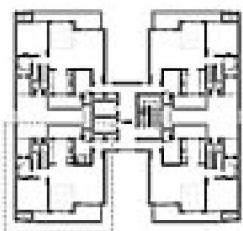


KEY PLAN

UNITPLAN
AREA
3061SQ.FT.
284.37 SQ. MTR.



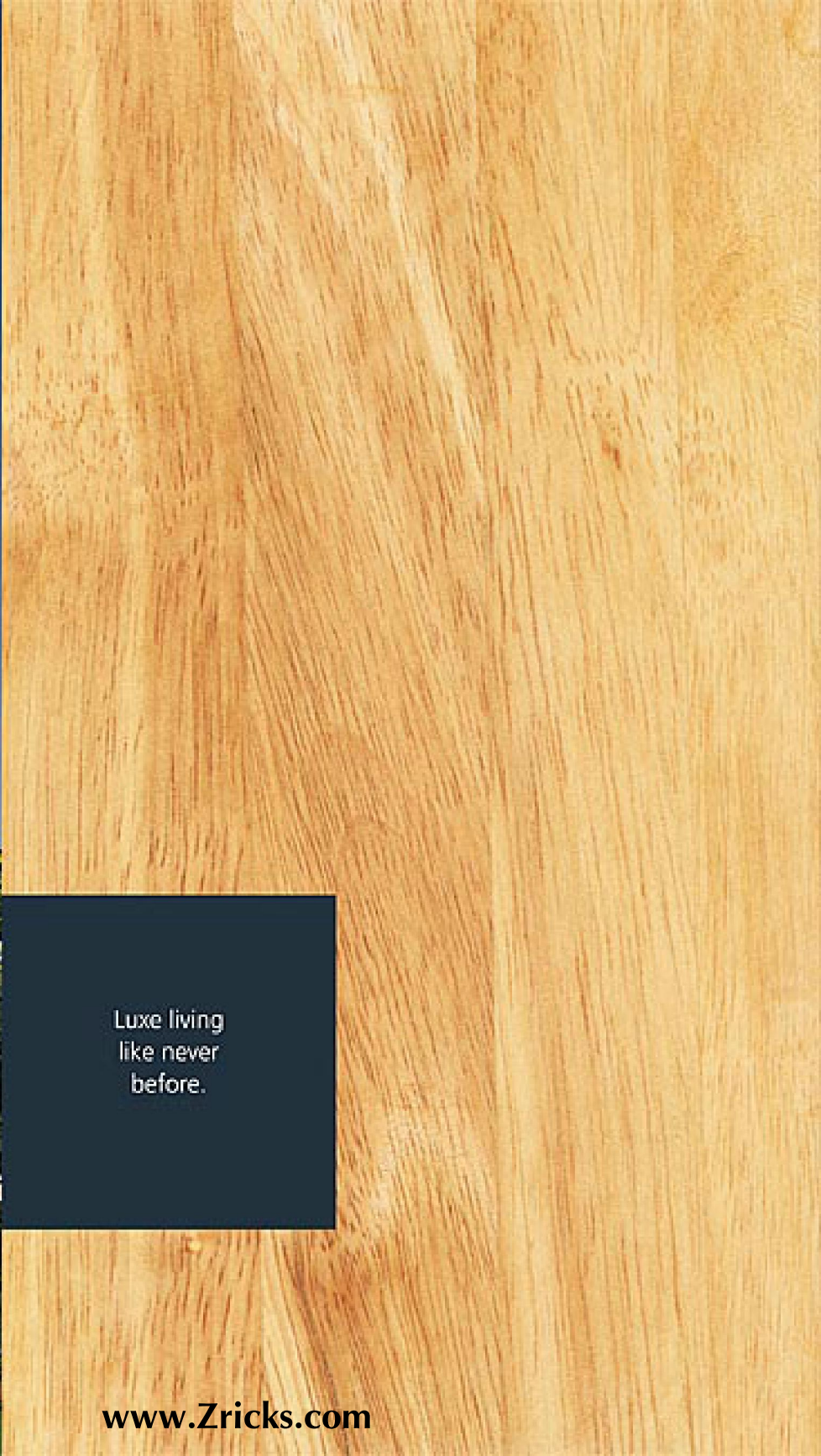
UPPER FLOOR PLAN



KEY PLAN

**UNIT PLAN
AREA
3061 SQ. FT.
284.37 SQ. MTR.**





Luxe living
like never
before.

www.Zricks.com



Living/Dining

Wall finish	Painted in pleasing shades of acrylic emulsion paint with velvet finish
Flooring	Select imported marble Select imported marble for stairs and upper lobby area



Bedrooms

Wall finish	Painted in pleasing shades of acrylic emulsion paint with velvet finish
Flooring	Imported marble/hard wood



Bathrooms

Flooring	Imported marble
Dado	Imported marble/granite
Fittings	Granite/marble counter, white sanitary fixtures, contemporary chrome plated fittings Steam & shower in the master bathroom



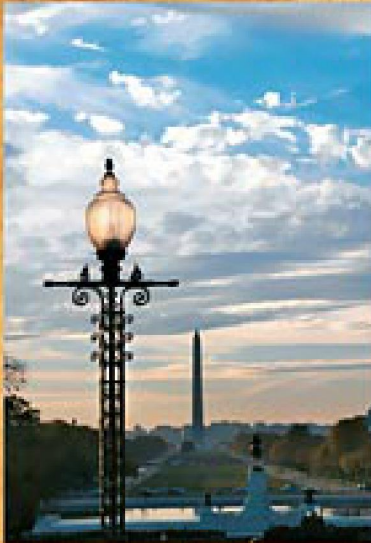
Doors & windows

Doors	Main Door Seasoned hardwood frames with designer shutter (high and large) Internal Doors Seasoned hardwood frames with painted skin door shutters (tall doors with 8" teak frames)
Windows	UPVC frames and glazing, floor to ceiling glass in double height area



Modular Kitchen

Dado	Granite above the working platform and rest painted in acrylic emulsion paint
Counter	Working platform/counter equipped with double bowl stainless steel sink, drain board, chimney-hob and dishwasher.



Amenities

- | | |
|------------------|-----------------------------------------------------------------------------|
| Electrical | Copper electrical wiring in concealed conduits for all light & power points |
| Air-conditioning | VRV air-conditioning |
| Others | Concierge desk in the ground floor |
- Swimming pool, gymnasium, spa, juice bar, reading area and laundromat
 - High speed WiFi internet with CAT 6 wiring specifications
 - DTHHD service for each home
 - CCTV & door phone video surveillance systems
 - Ambient lighting in living area and bedrooms
 - Contemporary switchboard panels
 - Thoughtful landscaping of the tower's surrounding exterior areas



Balcony

- | | |
|----------|----------------------------------------|
| Flooring | Superior grade anti-skid ceramic tiles |
| Railing | Glass |



Towers

- | | |
|-----------------|--------------------------------------------------------------------------------------------------------------|
| External Facade | Combination of texture paint finish and stone cladding |
| Lift Lobbies | Select imported marble flooring with select imported marble/granite cladding & acrylic emulsion paint finish |
| Terrace | Superior grade anti-skid ceramic tile flooring |



Utility Room

- | | |
|-------------|--------------------------------|
| Wall finish | Painted in oil bound distemper |
| Flooring | Vitrified tiles |

*Architects and the developer reserve the right to alter specifications and facilities for design improvement.

OUR DELIVERED PROJECTS



FREEDOM PARK LIFE



BPTP CREST



PARK ELITE FLOOR



PARK GRANDEURA



BPTP is one of the fastest growing real estate developer's in the National Capital Region. In the 8 years since our inception we've grown steadily and have left a lasting imprint on the NCR's cityscape. We have attracted reputed investors like CIP, JP Morgan Chase & Co., Merrill Lynch, Kotak Investment Advisors Ltd. and Kellorzo Holdings Company Ltd.

BPTP has a land bank of over 2000 acres, and 35 million sq. ft. of residential and commercial space that has been sold and is under multiple stages of development.

In Gurgaon, we've undertaken the development of the finest home options, from independent floors to apartments and villas. With Astaire Gardens and Amstoria, our integrated luxury townships, we are awarding the city with the zenith of opulent living. Capital City, our signature commercial project in NOIDA, promises to usher in a new era of commercial development, still unheard of in India. A futuristic, integrated, business and retail centre, the project promises to re-invent how business is conducted effectively.



Marketing Office: BPTP Limited, BPTP Crest, Plot # 15, Udyog Vihar Phase IV, Gurgaon 122015, Haryana
Tel: +91-124-385-2767, E-mail: info@bptp.com, Website: www.bptp.com

BPTP Haryana has granted M/s Countrywide Promoters (P) Ltd. license no. 122 to 124 dated 28/03/08 & no. 209 dated 20/12/07 for development of group housing over 17.25 acres. The total no. of flats proposed for the project are 261 units, the total no. of flats proposed for the entire group housing project are 365 (including 100) & the building plan is approved vide license no. 20-204/2007/2008/11/0002 on 11/11/07. There is a provision of 2 nursery schools, 1 community centre & shopping area. Note: Agencies can be deployed in the residential office. Site plan and site plans are subject to changes that may occur during course of construction based on the working drawings which shall be regulated by the developer. Architects and developers reserve the right to alter the specifications and facilities for design improvement. This communication is purely illustrative and not a legal offering. The developer reserves the right to amend/alter the area, layout, elevations, specifications and amenities. Disclaimer: photographs/images used in this brochure are purely artistic, structure and tend to change without prior notice. All images are for visual representation.

www.Zricks.com