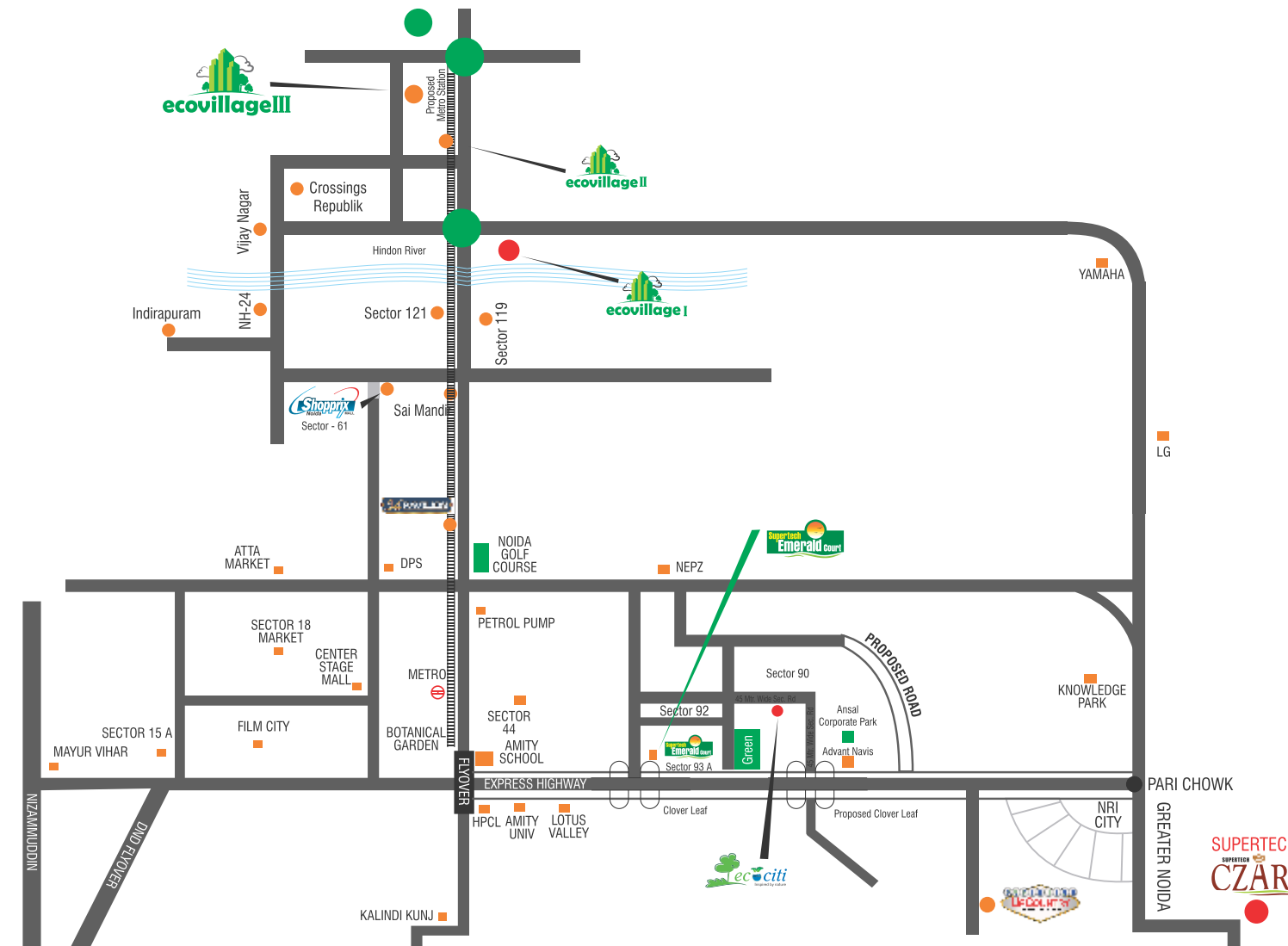


Location Map



Distance Legends

- Sector 71 Red Light - 6 kms (approx.)
- Noida City Centre Metro Station - 9 kms (approx.)
- Sai Mandir - 8.5 kms
- Indirapuram - 6.5 kms
- Crossings Republik - 4 kms



Call: 9582555158, 7838787873, 0120-4724100

CREDAI  www.facebook.com/supertechlimited

Supertech Limited: Supertech House- B 28-29, Sector 58, Noida 201307. Ph.: 0120- 4572600 | Site office: Plot No. GH-06, Sector-16B, Greater Noida

www.supertechlimited.com | Toll free: 1800 103 7676 | sms STC to 56677



ecovillage
the first
reason
to be at Noida Extension.



First project of Noida Extension. First in construction progress. First to win the trust of over 12,000 happy families.

EcoVillage-III

EcoVillage-III

The first project for affordable yet upscale homes at Noida Extension

If it's a home at Noida Extension, it's got to be at EcoVillage-III. The first ever project to have launched here, EcoVillage-III is also the first to offer affordable, yet upscale homes in the NCR. Equipped with a host of facilities that add to your comfort and convenience, EcoVillage-III houses 2/3/4 BHK living options.



Salient features

- ✓ 82% open landscaped area.
- ✓ Swimming Pool, Health Club, Medical Centre, Ayurvedic Massage Centre.
- ✓ Badminton Court, Tennis Court & Amphitheatre.
- ✓ In-house convenient Shopping Arcade, "Ecobazaar".
- ✓ Earthquake resistant R.C.C. frame structure & non-load bearing brick walls.
- ✓ Intercom facility in all flats connected with security room and administration office.
- ✓ 4-sided open Vaastu-friendly Fengshui layout & design.
- ✓ Round the clock customer care.
- ✓ Reticulated gas supply to every kitchen.
- ✓ Ample parking space.
- ✓ Well-designed complex with beautiful landscape.
- ✓ Guard room at main entrance.
- ✓ Recycle bins across the campus. In-house garbage/sewage treatment plan.
- ✓ CNG operated power back-up generation.
- ✓ Every tower, well equipped with fire suppression system.



EcoVillage-III. Construction Update.

Master Plan Approved. Noida Extension is poised to take off.

With the Noida Extension Master Plan approved, it is poised to be one of the most well-planned regions of NCR. Excellent infrastructure, meticulous city planning, host of facilities and the proposed Metro connectivity will ensure this area becomes the residential destination of NCR. So come, be a part of Noida Extension's first large-scale residential development that suits your dreams and your budget.



Source: TOI/HI/MI: July 09th 2012



Unit Plans



Area - 840 Sq. Ft.
 • 2 Bedrooms
 • 2 Toilets
 • Kitchen
 • Dining
 • Drawing
 • 2 Balconies

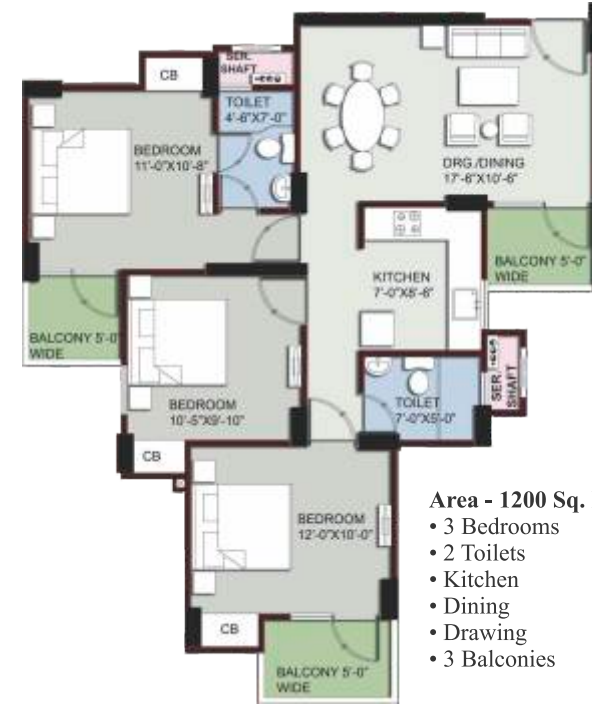


Area - 910 Sq. Ft.
 • 2 Bedrooms • 2 Toilets
 • Kitchen • Dining
 • Drawing • 3 Balconies



Area - 1090 Sq. Ft.
 • 2 Bedrooms • 2 Toilets • Kitchen
 • Dining • Drawing • 3 Balconies

Unit Plans



Area - 1200 Sq. Ft.
 • 3 Bedrooms
 • 2 Toilets
 • Kitchen
 • Dining
 • Drawing
 • 3 Balconies

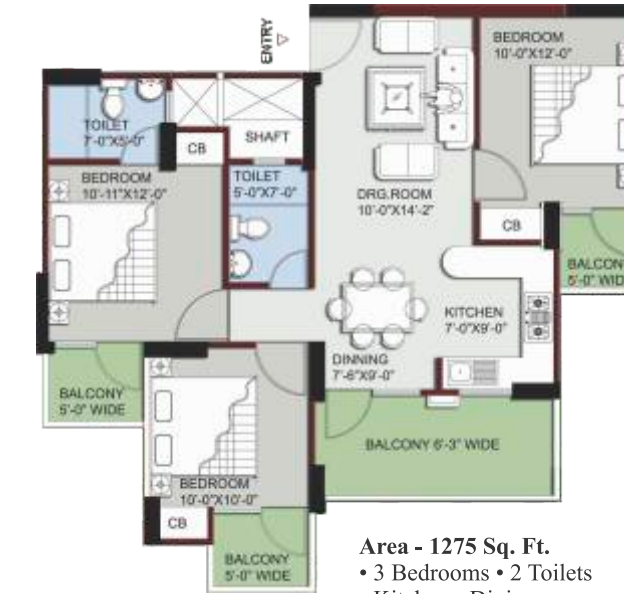


Area - 1210 Sq. Ft.
 • 3 Bedrooms • 2 Toilets • Kitchen
 • Dining • Drawing • 3 Balconies

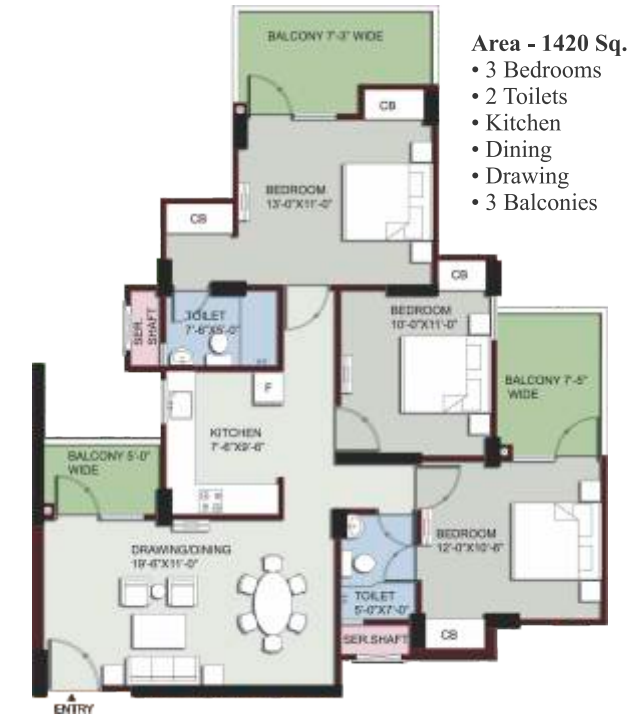


Area - 1230 Sq. Ft.
 • 3 Bedrooms • 2 Toilets • Kitchen • Dining • Drawing • 3 Balconies

Unit Plans



Area - 1275 Sq. Ft.
 • 3 Bedrooms • 2 Toilets
 • Kitchen • Dining
 • Drawing • 3 Balconies



Area - 1420 Sq. Ft.
 • 3 Bedrooms
 • 2 Toilets
 • Kitchen
 • Dining
 • Drawing
 • 3 Balconies



Area - 1459 Sq. Ft.
 • 3 Bedrooms • 2 Toilets
 • Kitchen • Dining
 • Drawing • 3 Balconies

Unit Plans



Area - 1585 Sq. Ft.
 • 3 Bedrooms • 2 Toilets
 • Kitchen • Dining
 • Drawing • 4 Balconies



Area - 1649 Sq. Ft.
 • 3 Bedrooms
 • 3 Toilets
 • Kitchen
 • Dining
 • Drawing
 • 4 Balconies



Area - 1680 Sq. Ft.
 • 3 Bedrooms • 3 Toilets • Kitchen • Dining
 • Drawing • 4 Balconies



Area - 1850 Sq. Ft.
 • 3 Bedrooms
 • 4 Toilets
 • Kitchen
 • Dining
 • Drawing
 • 4 Balconies
 • Servant Room

Specifications

LOCATION	FLOOR	EXTERNAL DOOR AND WINDOW	ELECTRICAL FITTINGS	WALLS	FITTINGS	INTERNAL DOOR	HARDWARE	ELECTRICAL	WATER SUPPLY	CEILING
LIVING ROOM	Virrified Tiles	Powder Coated Aluminium with Double Rebate	Sheet and Switches	Oil Bound Distemper	-	Flush Shutter with Wooden Frame	Copper wiring and PVC concealed conduit. Provision for adequate light and power points as well as Television and T.V. outlets with modular switches and protective M.C.B.'s	All doors and windows with metal fittings along with mortice lock on the main door	Underground and overhead water tanks with pumps and 24 hours water supply. Individual R.O. plant of standard make in each kitchen.	Oil Bound Distemper
DINING	Virrified Tiles	Powder Coated Aluminium with Double Rebate	Sheet and Switches	Oil Bound Distemper	-	Flush Shutter with Wooden Frame				Oil Bound Distemper
BEDROOM	Virrified Tiles	Powder Coated Aluminium with Double Rebate	Sheet and Switches	Oil Bound Distemper	-	Flush Shutter with Wooden Frame				Oil Bound Distemper
MASTER BEDROOM	Virrified Tiles	Powder Coated Aluminium with Double Rebate	Sheet and Switches	Oil Bound Distemper	-	Flush Shutter with Wooden Frame				Oil Bound Distemper
DRESSING ROOM	Virrified Tiles	Powder Coated Aluminium with Double Rebate	Sheet and Switches	Oil Bound Distemper	-	Flush Shutter with Wooden Frame				Oil Bound Distemper
SERVANT ROOM	Ceramic Tiles	Powder Coated Aluminium with Double Rebate	Sheet and Switches	Oil Bound Distemper	-	Flush Shutter with Wooden Frame				Oil Bound Distemper
KITCHEN	Virrified Tiles	Powder Coated Aluminium with Double Rebate	Sheet and Switches	Ceramic Tiles of 2' height from the platform	Stainless Steel Sink with C.P. Fittings	Open				Oil Bound Distemper
TOILET	Ceramic Tiles	-	Sheet and Switches	Ceramic Tiles of 7' height	Washbasin WC & C.P. Fittings	Flush Shutter				False Ceiling
BALCONIES	Ceramic Tiles	-	Sheet and Switches	Oil Bound Distemper	-	-				Permanent Paint Finish
LIFT	PVC. Flooring	-	Sheet and Switches	-	-	-				-
LOBBIES/CORRIDOR	Kota Stone / Virrified Tiles	-	-	Oil Bound Distemper	-	-				-
EXTERIOR FINISH	-	-	-	Texture Paint	-	-				-

Site Plan



OXFORD SQUARE & ECOVILLAGE - III AT SECTOR - 16B, GREATER NOIDA