



www.Zricks.com



www.Zricks.com

It's time we stopped looking for a finer lifestyle on the map. It's time we refused to accept luxury in bits and pieces. You wouldn't need a visit to the megapolises of the world to experience the best. Now your city will have better stories to tell. 360° presents homes at Park Sentosa – a smart capital right in the heart of Faridabad, that offers a perfect balance of technology and serenity. Safety and Exclusivity. Experience a lifestyle like never before.



www.Zricks.com



www.Zricks.com



Experience lifestyle
that's
truly global.



FARIDABAD'S BIGGEST POOL*



SKY GARDEN



SKY LOUNGE



SKY GYM



EXPERIENCE A NEW LIFESTYLE

FARIDABAD'S HIGHEST POOL*

At Seriosa, good things never come in small packages. Everything is grand. No matter how small a dive you take, you will be swimming in the largest pool of Faridabad, designed to offer you an experience like never before.

SKY LOUNGE

Gone are the days when the evening sky was just your machine's wallpaper. Now, the sky plays the backdrop as you sit in the company of your family and friends at the Sky Lounge. Just take the elevator from your floor to the terrace and comfort yourself like you have never.

SKY GARDEN

Every story and every scene needs a background. A setting that makes even the ordinary look special. And to add just that extra colour to your life, BPTP brings to you Park Seriosa, homes with sky-high gardens, so not only do you breathe the uncommon air, but also, you don't miss out on the scent of the soil after the rain.

SKY GYM

Park Seriosa life, while being excellently connected to every part of Faridabad, is miles away from the cluttered living of the city below. So how can your workout be anything but extraordinary? Here you will jog in the clouds and press the bench inhaling the freshest air possible. The one that's never been shared.

*Condition apply

BPTP PARKLANDS, THE HEART OF NCR

LOCATION MAP



*Conditions apply

PROPOSED METRO LINE
(CONSTRUCTION IN PROGRESS)

TOWARDS FARIDABAD-GURGAON HIGHWAY

BADARPUR

NH-2

FORTIS HOSPITAL

GT ROAD - DELHI TO AGRA HIGHWAY

NH-2

NH-2

FROM DELHI



FROM DELHI

FROM DELHI

FARIDABAD

FROM NOIDA



MAP NOT TO SCALE

www.Zricks.com



www.Zricks.com



LEGEND

- 1. JOGGING TRACK / SKYWALK
- 2. LIFT LOOPS
- 3. SEATING BLOCKS
- 4. SKY GYM
- 5. BARBEQUE COUNTER
- 6. ACCENT PLANTING
- 7. PLAYGROUND SKY GYM
- 8. REFLECTIVE POOL
- 9. LAWN



TERRACE PLAN

- | | |
|---------------------------------|--------------------------|
| 1. Jogging track/skywalk | 6. Accent Planting |
| 2. Lift core | 7. Revolving Observatory |
| 3. Seating blocks | 8. Reflective Pool |
| 4. Skygym | 9. Lawn |
| 5. Barbeque counter with tables | 10. Seating |

Give your life a pleasing start every time you come home to Park Sentosa, and experience elegance and tranquility blend in harmony.

- Exquisite imported marble flooring
- Fully air conditioned lobby
- Waiting lounge and concierge

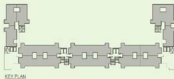
UNIT PLAN

2 BHK
Size = 130.06 sq. mtr.
(1400 sq. ft.)



UNIT PLAN

3 BHK
Size = 152.92 sq. mtr.
(1646 sq. ft.)



FACILITIES

Electrical copper wiring in concealed conduits for all light and power points
Adequate power back-up
Sufficient car parking available
Conveniently located shopping centre
Recreational club for residents

OTHER STRUCTURE:

Earthquake resistant RCC framed structure

EXTERNAL FACADE:

Aesthetically finished in texture paint

LOBBIES

Ground Floor Lobby:

Select granite/marble flooring, finished with highly aesthetic cladding

Typical Floor Lobby:

Stone series vitrified tile

EXTERNAL SPACES

Landscape podium with swimming pool

Roof-top garden with observatory

Maintained green areas

Children's play area

Jogging and walking track at roof level

Comfortable seating areas

Adequate street lighting and landscape lighting*





SPECIFICATIONS

LIVING/DINING

WALL FINISH:

Painted in pleasing shades of acrylic emulsion

FLOORING:

Vitrified tiles

BEDROOMS

WALL FINISH:

Painted in pleasing shades of acrylic emulsion

FLOORING:

Vitrified tiles/Wooden laminated flooring

BATHROOMS

FLOORING:

Ceramic tiles

DADO:

Ceramic tiles up to 7' 0" and the rest painted in acrylic emulsion

FIXTURES & FITTINGS:

Granite/Marble counter, white sanitaryware and contemporary chrome plated C.P. fittings

KITCHEN

FLOORING:

Vitrified tiles

DADO:

Ceramic tiles upto 2 feet from working platform and the rest painted in acrylic emulsion

PLATFORM:

Granite/Marble counter with single bowl stainless steel sink with drain board

BALCONY

FLOORING:

Anti-skid ceramic tiles

DOORS & WINDOWS

DOORS:

Imported high finished wooden decorative door

WINDOWS:

UPVC

*Architects and the developer reserve the right to alter specifications and facilities for design improvement.



CAPITAL CITY**



VISIONNAIRE**



SPTP CREST**



PARK GRANDEIRA**



PRINCESS PARK**



A BIT ABOUT US

The last decade has witnessed the growth of one of the most prolific real estate companies in the National Capital Region: BPTP. Driven by the twin pillars of operational excellence and unparalleled customer experience, our endeavour is to create best in class and sustainable developments.

In just 9 years, we have successfully launched Faridabad as an incredibly promising real estate market, with our flagship project Parklands, a fully integrated township. In Gurgaon we have created perfect examples of integrated luxury townships - Amstoria and Astaire Gardens. Capital City NOIDA, our marquee mixed-use project is set to create a benchmark in the Indian realty market.

Our core strengths are identifying opportunities before others, developing and successfully executing them to a sustainable development. We have set our sight on a future which holds even greater promise as our company strives to achieve new heights.

www.Zricks.com

