



*Holiday  
Village*

**NOW EXPERIENCE BEACHSIDE LIVING.  
WITHOUT LEAVING NCR.**

**Beachside Villas, at Upcountry**  
100 acre grand civilization on Yamuna Expressway,  
0 kms from Greater Noida.

[www.Zricks.com](http://www.Zricks.com)



**Spanish Villas**  
beyond adjectives. beyond hyperbole.



## Exclusive Features of Villas

- Spread over sprawling 100 acres of prime land on Yamuna Expressway, a part of grand civilization, Supertech Upcountry.
- Expandable Independent Villas and Castles
- Available in various sizes – 90 sq yds. / 125 sq yds. / 200 sq yds. / 500 sq yds. / 1000 sq yds.
- World class amenities like manmade beach and lake, lush-green landscaping, fully loaded recreational centre with Gym, Squash Courts, Swimming Pool and much more.
- Shopping Mall, School, Hospital, Hotel, Plotted Development, Hi-rise condos, second inning homes inside.

## Specifications

**Structure :** Earthquake resistance  
RCC structure.

**LIVING / DINING / LOBBY PASSAGE**

**FLOOR :** Vitrified tiles – Stone texture.

**WALLS :** Plastic paint.

**CEILING :** Designer POP.

**KITCHEN**

**WALLS :** Designer ceramic tiles  
with border upto 2 ft. above counter.

**FLOOR :** Combination of  
anti skid ceramic tiles / vitrified tiles.

**COUNTERS :** Granite working platform.

**FITTINGS / FIXTURES :** CP fittings,  
stainless steel sink double bowl.  
Individual R.O. system.

**WOOD WORK :** Complete modular  
kitchen with hob & chimney.

**TOILET**

**WALLS :** Designer ceramic tiles.

**FLOOR :** Combination of anti skid ceramic  
tiles/ vitrified tiles.

**FITTINGS / FIXTURES :** Jaguar/Koto or  
superior, granite counter, branded chinaware  
fixtures & geyser.

**WATER :** Hot and cold water  
pipeline provision

**ELECTRICAL**

Modular switches.

24 Hrs. power backup provision.

Fan, light and fancy light fittings.

**SECURITY :** Video doors phone.

**BEDROOM**

**FLOOR :** Vitrified tiles – Stone texture  
/ laminated wooden flooring in master  
bedroom.

**WALLS :** Plastic paint.

**CEILING :** Designer POP.

**DOORS**

**ENTRANCE DOORS :** Hardwood panel  
doors with melamine polish

**INTERNAL DOORS :** Polished skindoors.



**WINDOWS :** UPVC

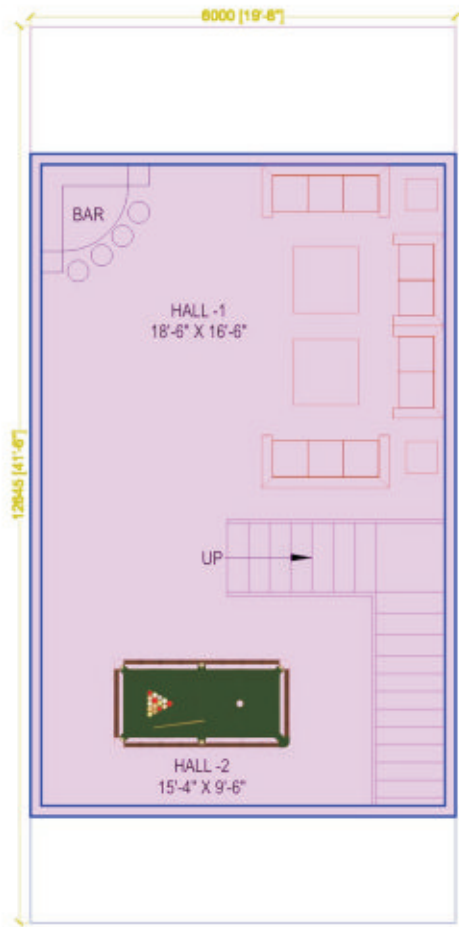
**BALCONY**

**FLOOR :** Anti skid ceramic  
tiles / terrazzo tiles

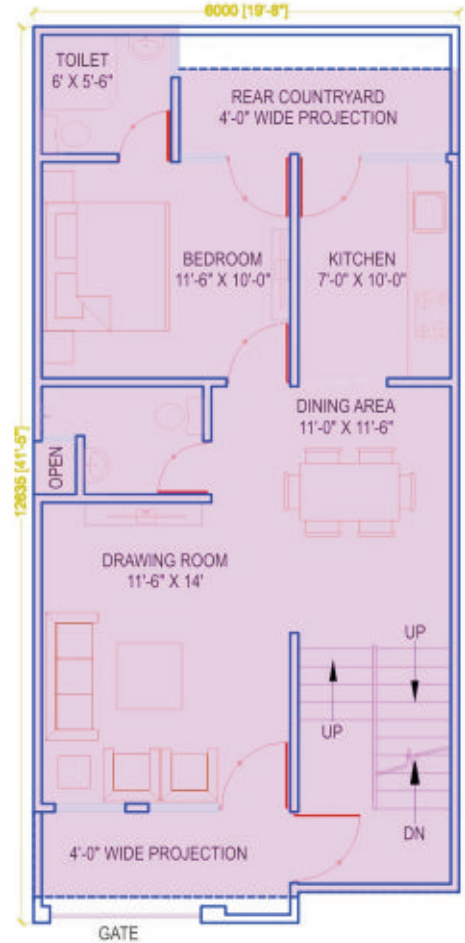
**WALL & CEILING :** Plastic paint /  
textures paint.



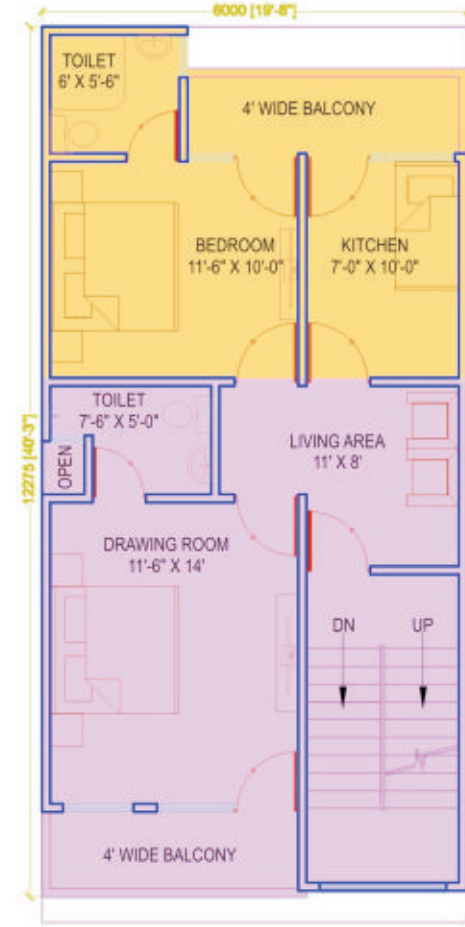
PLOT AREA = 810 SQFT. (90 SQYRD.)		
FLOOR	SYMBOL	AREA(IN SQFT.)
TOTAL CONSTRUCTED AREA BY US		2179
EXPANDABLE AREA		616



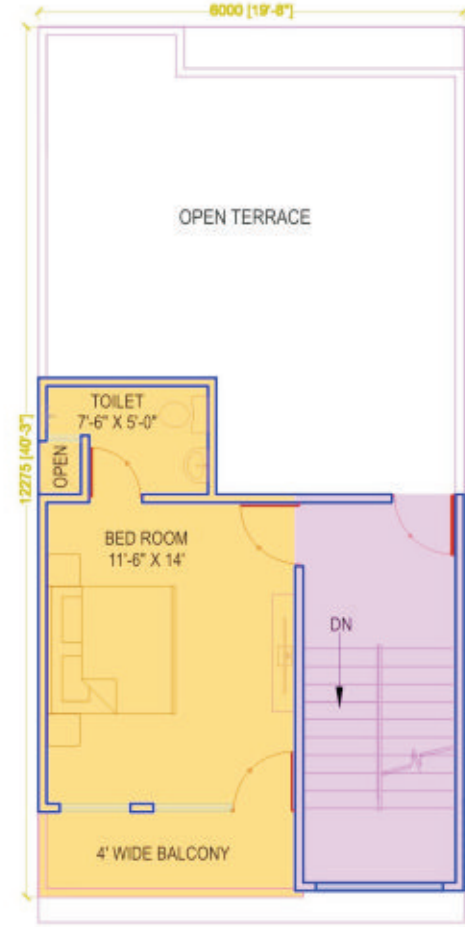
Lower Ground Floor Plan




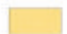
Ground Floor Plan

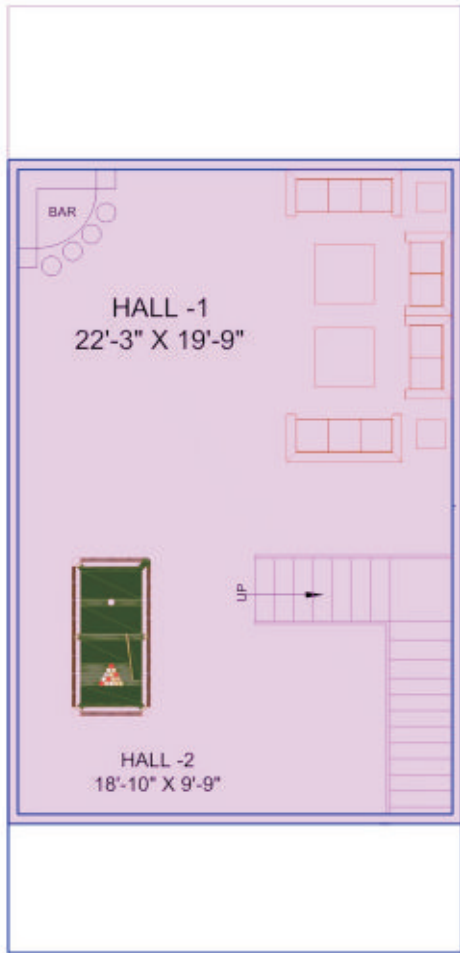


First Floor Plan

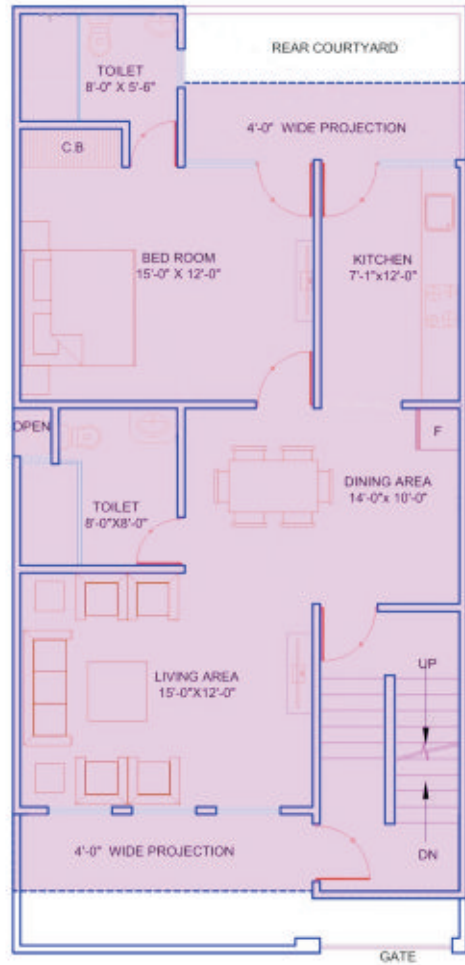


Second Floor Plan

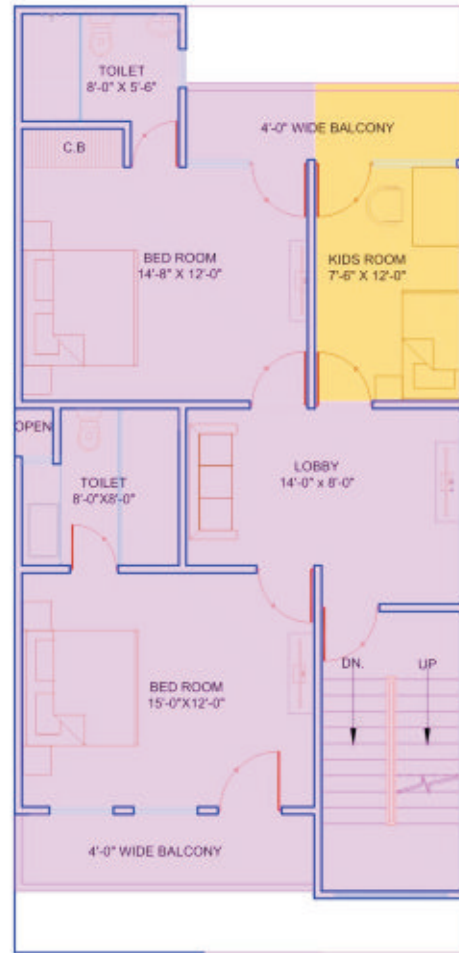
PLOT AREA = 1125 SQFT. (125 SQYRD.)		
FLOOR	SYMBOL	AREA(IN SQFT.)
TOTAL CONSTRUCTED AREA BY US		2989
EXPANDABLE AREA		502



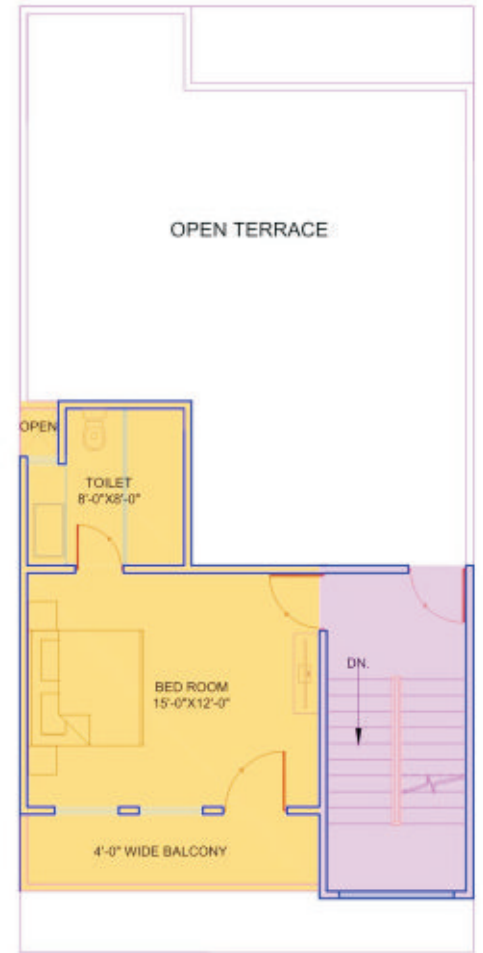
Lower Ground Floor Plan



Ground Floor Plan




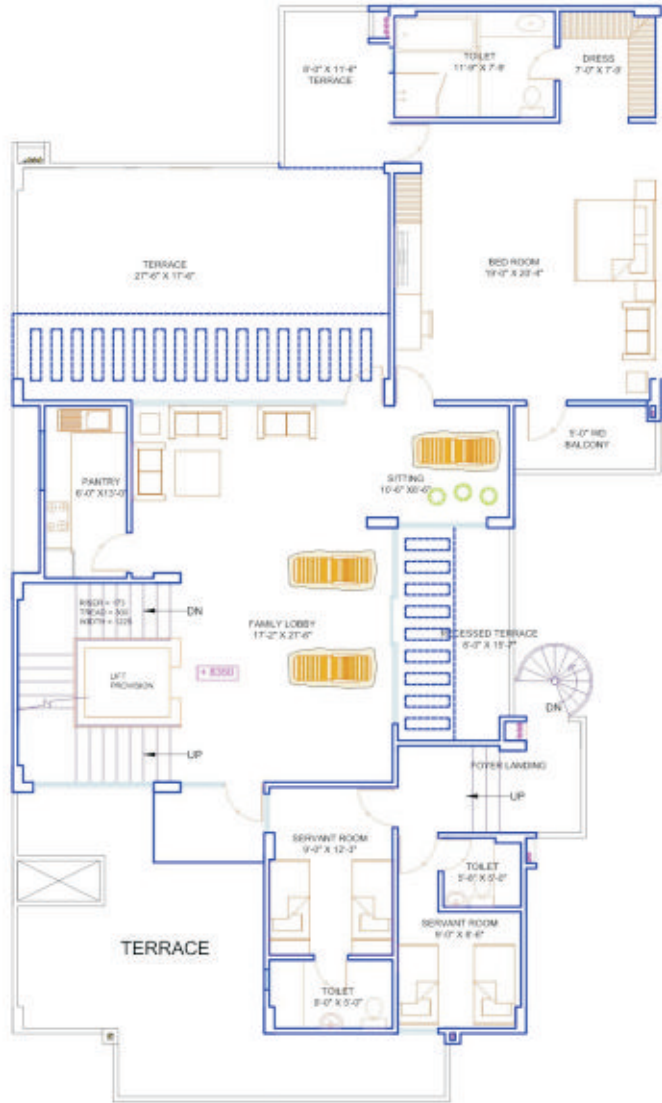
First Floor Plan



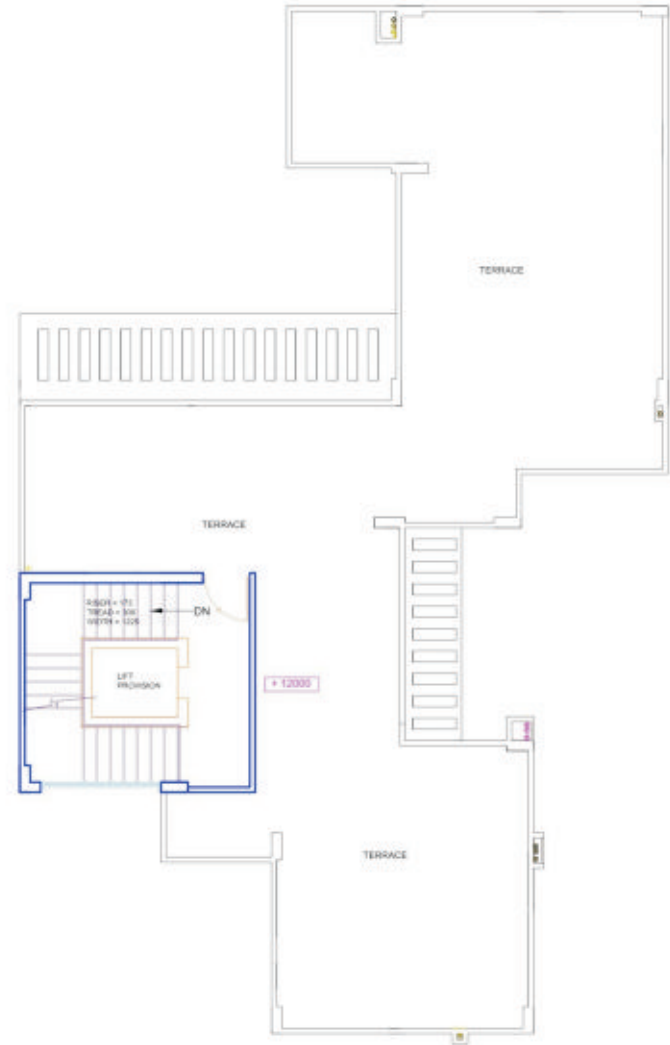
Second Floor Plan




PLOT AREA = 4500 SQ. FT. (500 SQ. YRD.)		
FLOOR	SYMBOL	AREA(IN SQFT.)
TOTAL CONSTRUCTED AREA BY US		15467

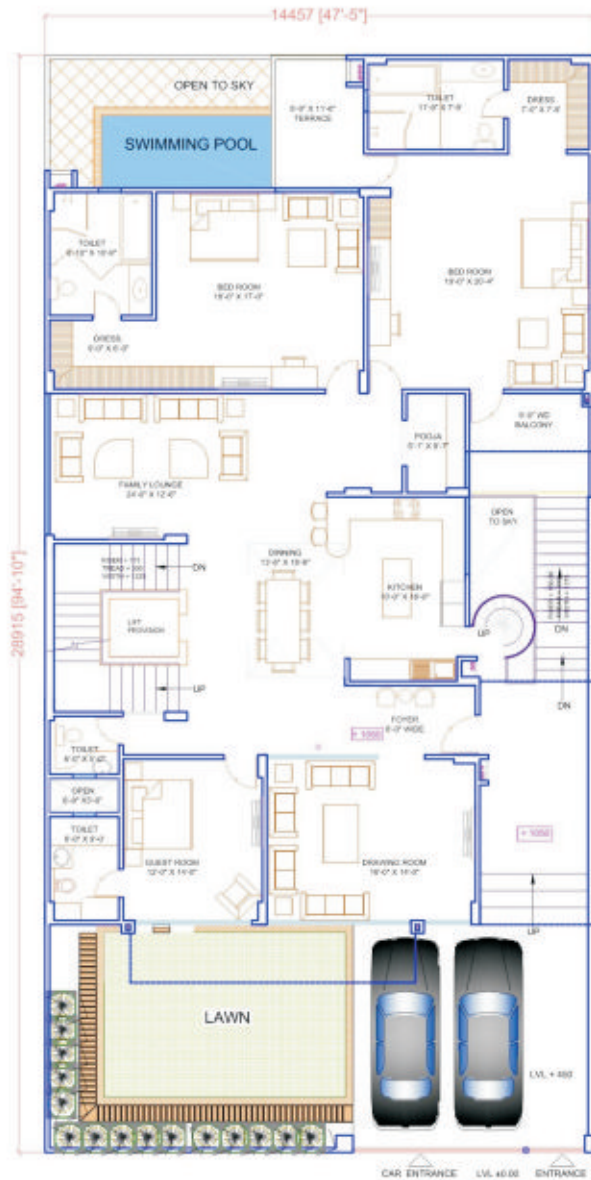
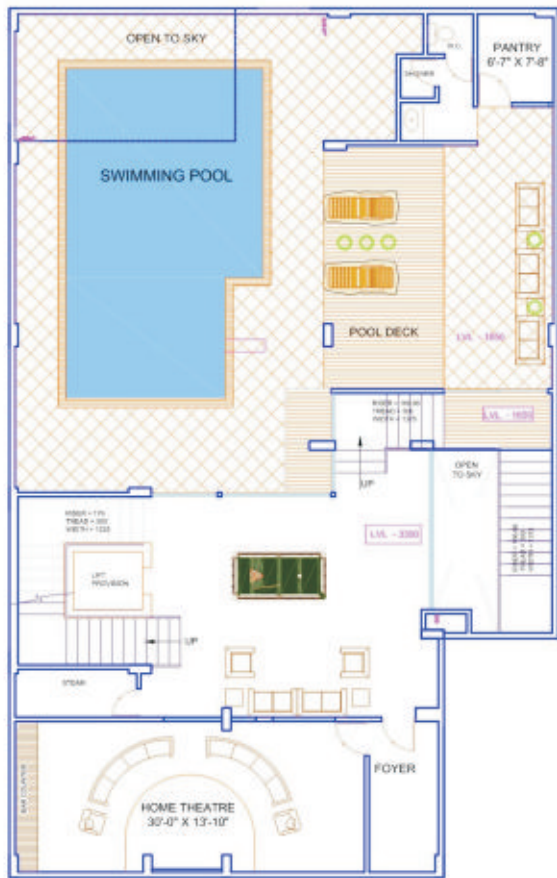


SECOND FLOOR PLAN





TERRACE FLOOR PLAN

PLOT AREA = 4500 SQ. FT. (500 SQ. YRD.)		
FLOOR	SYMBOL	AREA(IN SQFT.)
TOTAL CONSTRUCTED AREA BY US		15467

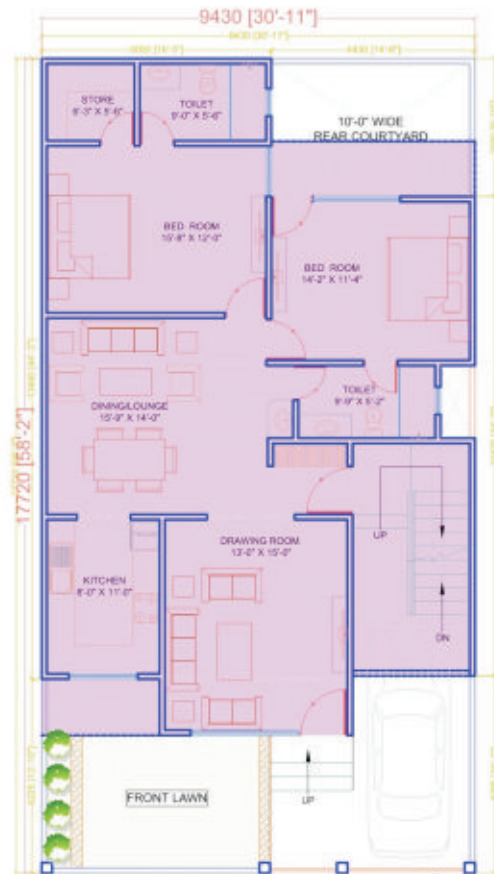


Plot Area = 1800 sq. ft. (200 sq. yrd.)

FLOOR	SYMBOL	AREA(IN SQFT.)
TOTAL CONSTRUCTED AREA BY US		3487
EXPANDABLE AREA		1211



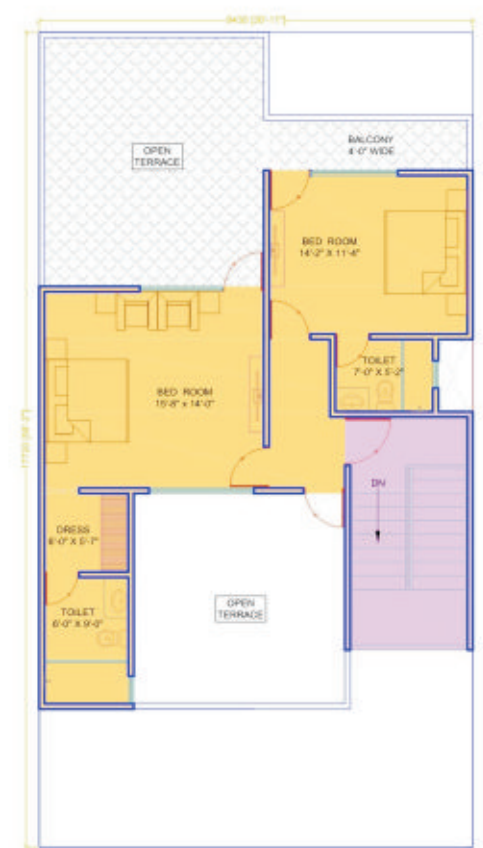
BASEMENT FLOOR PLAN



GROUND FLOOR PLAN







FIRST FLOOR PLAN



SECOND FLOOR PLAN



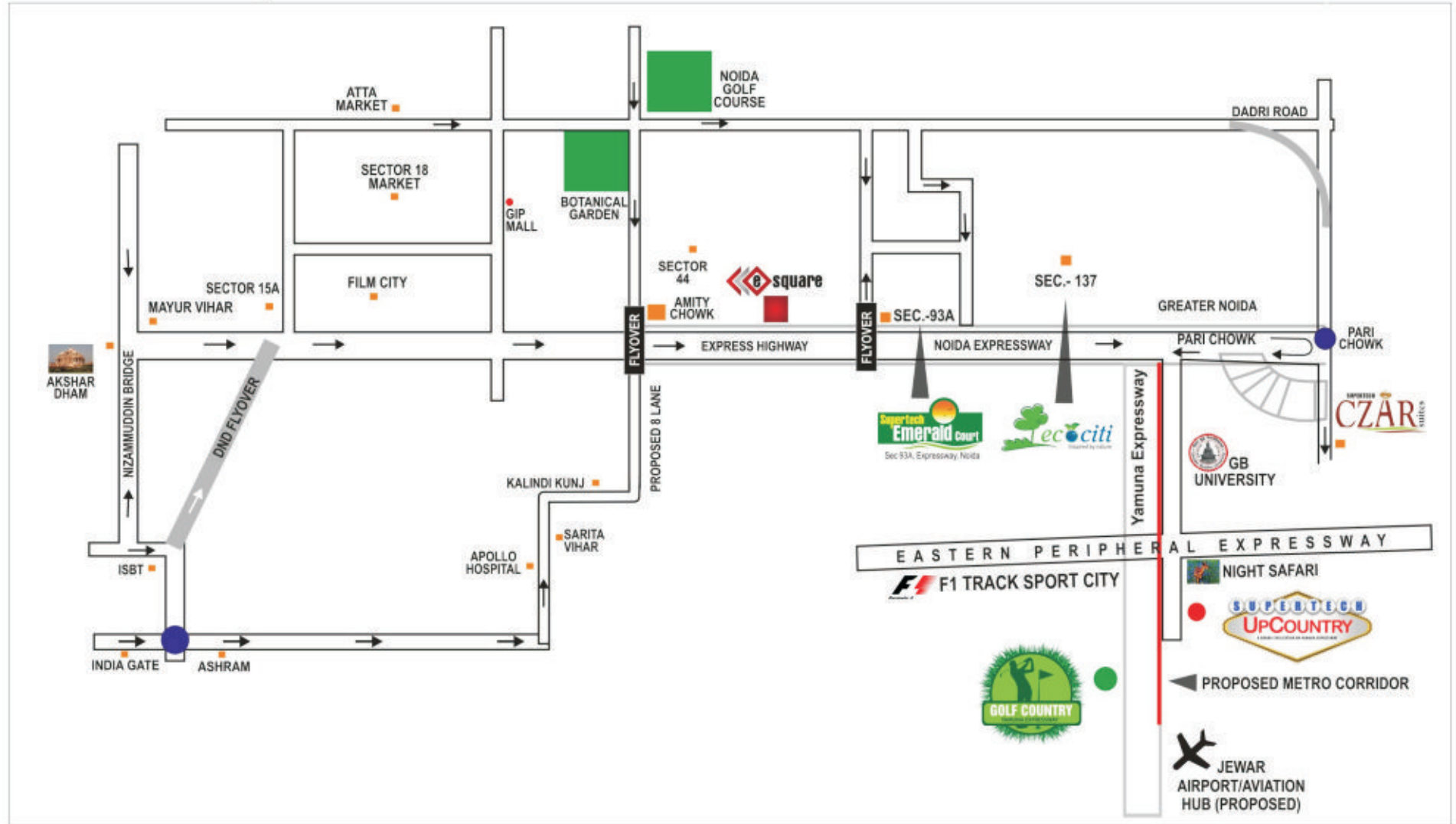
VILLA DEVELOPMENT DETAIL		
	90 SQ.YD VILLA (TYPE- S1) SIZE = 6.00 MT. X 12.645 MT.	133 No.S VILLA
	125 SQ.YD VILLA (TYPE- S6) SIZE = 7.06 MT. X 14.762 MT.	124 No.S VILLA
	200 SQ.YD VILLA (TYPE- S3) SIZE = 9.140 MT. X 18.265 MT.	37 No.S PLOT / VILLA
	500 SQ.YD VILLA (TYPE- S4) SIZE = 14.455 MT. X 28.920 MT.	18 No. PLOT / VILLA

*Night Safari*





# Location Map



Disclaimer : • The images shown are an artistic impressions only and does not carry any legal offering. Further, the promoters/ architect reserve the right to change it without any prior notice. • 1 Sq. Mtr. = 1.196 Sq. Yds.



**supertech**  
Tours for Life

Supertech Limited

Site Off.: TS-1, Sector-17-A, Yamuna Expressway • Supertech House, B 28-29, Sector-58, Noida

[www.Zricks.com](http://www.Zricks.com)