



supernova

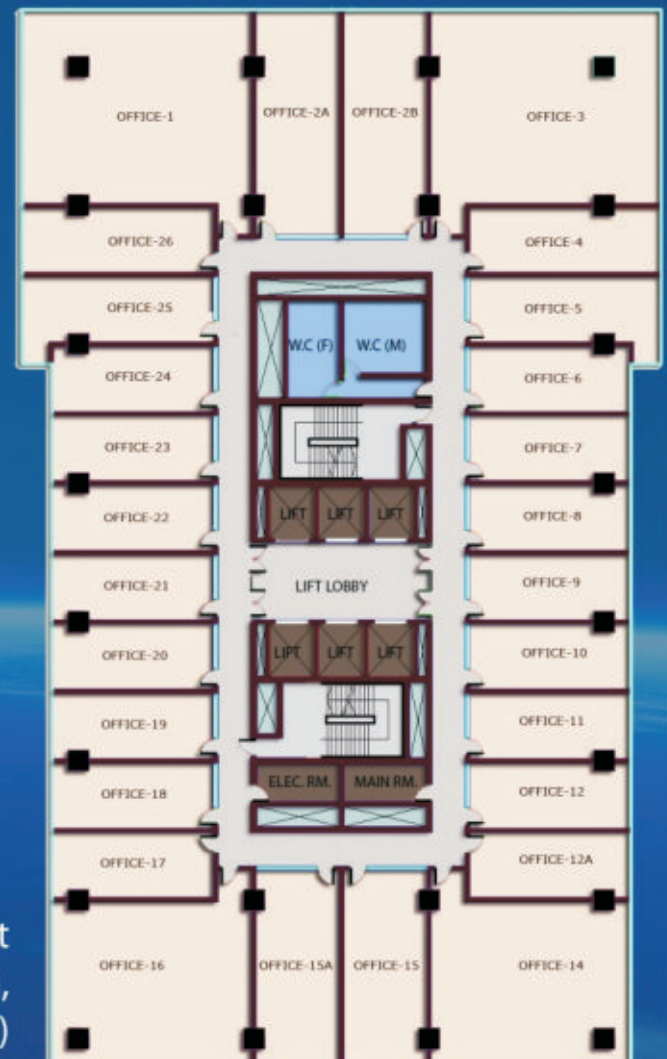
Welcome to
Your New World

Making business a pleasure

astralis

www.Zricks.com

Astralis Floor Plan

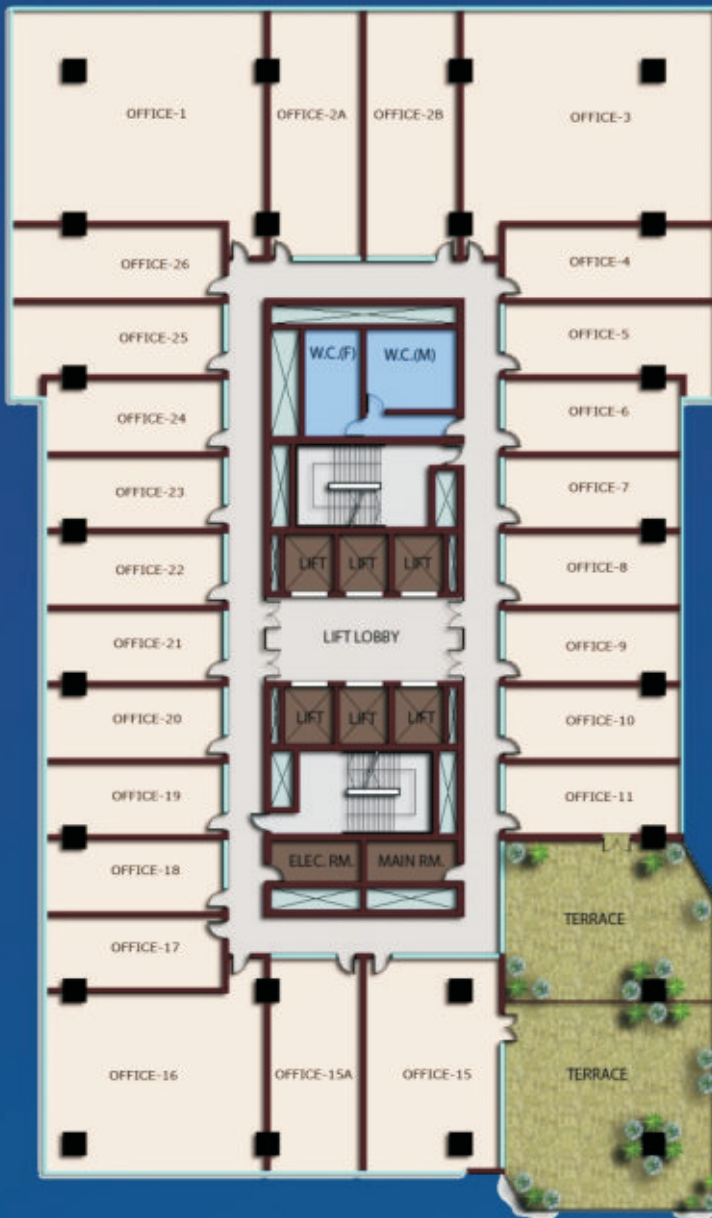


Floor Without
Terrace (7th, 8th, 9th, 12th, 13th, 14th,
17th, 18th, 19th, 22nd, 23rd, & 24th Floors)

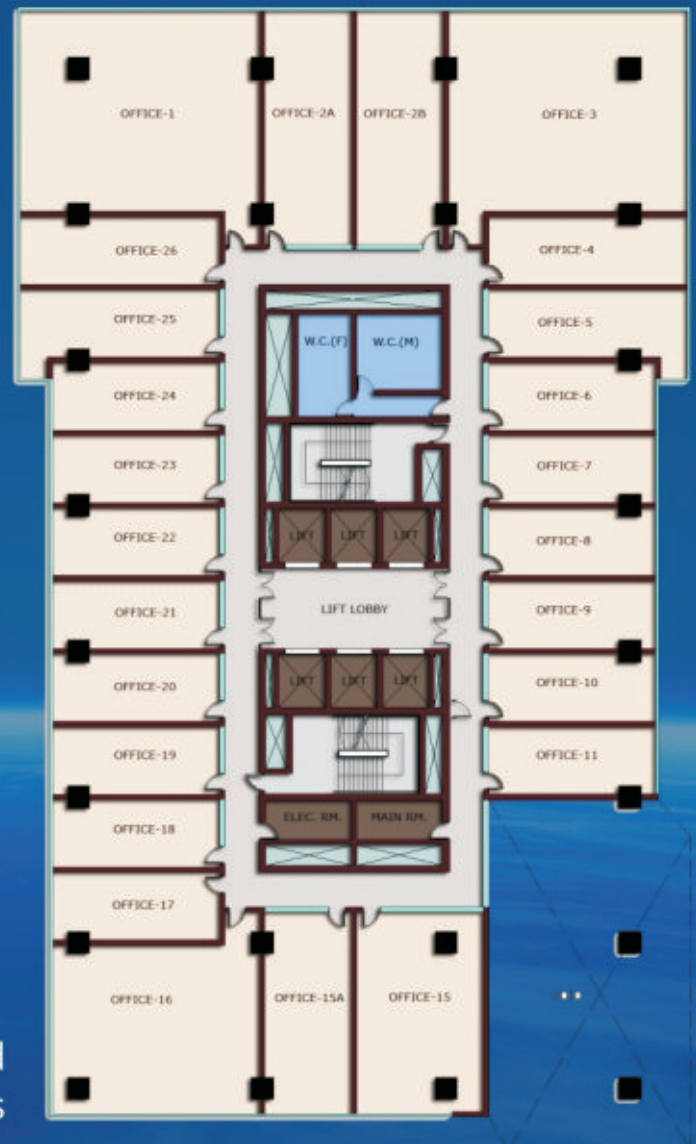


astralis

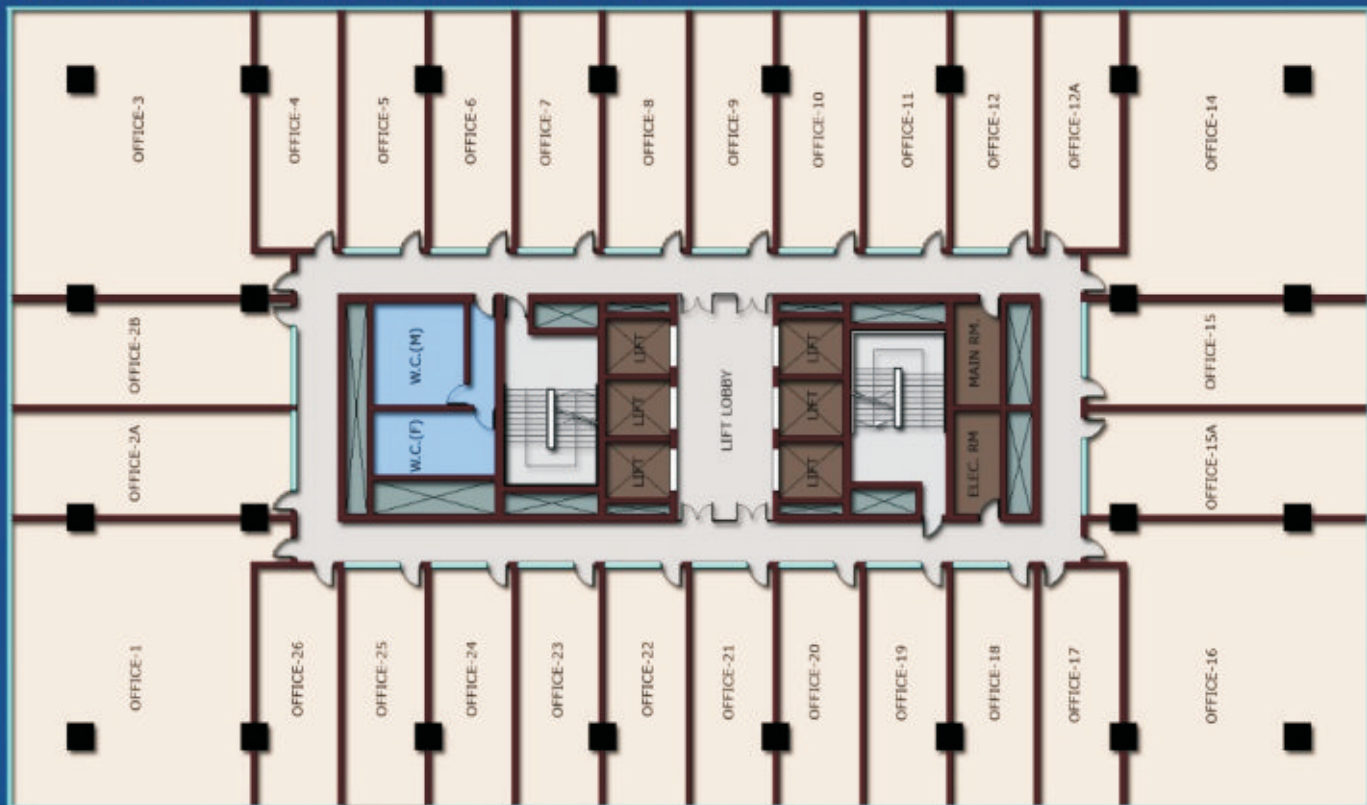
Floor With Terrace (5th, 10th 15th & 20th Floors)



Floor With Void 6th, 11th, 16th & 21st Floors



Upper Large Floor (25th & 26th Floors)



Specification

Structure

RCC column and slab with brick work masonry

OFFICE AREA :

Lobby	Air- conditioned
Ceiling	POP/ Gypboard Ceiling
Walls	Painted
Flooring	Granite
Reception	Manned reception desk with visitor control
Vertical Transport Visitors & Staff	High Speed Elevator Lift with automation

FLOOR LIFT -LOBBIES AND CORRIDORS

Ceiling	POP/ Gypboard Ceiling
Walls	Painted
Flooring	Granite
Lift Entrance	Granite clad Architrave around lift
Public Conveniences	Separate toilet for Ladies and Gents with automatic taps on wash basins
Additional	Janitor room at each floor

OFFICE

HVAC	Each floor will have one AHU smoke detector as per the unit at core location and fire bye laws capacity as recommended by the HVAC consultants. The Supply duct will be available up to the corridor area / abutting office. The buyer will get duct available up to the corridor area / abutting office. The buyer will get ducting design within their premises approved from the Facility Manager of HVAC consultants of the company at their cost. The company will supply 1TR capacity per 500 sq. ft of super area, measured at AHU end. Additional Air conditioning rates will apply to office operating during 6PM to 9AM
------	---

Signage	The uniform signage will be placed at specified location in office front area or the signage will be placed behind the office glazing.
---------	--

Water	Portable water supply on chargeable basis. Overhead storage tank water treatment/ filtration system. Portable drinking water supply at single point, one each floor for allottee(s)/ Occupier(s).
-------	---

Fire Fighting	Sprinkler system Hydrants with hose reel smoke detectors connected to central fire panel
Lighting System	All public areas shall be well lit with energy efficient fixtures



Site Plan

Features:

- Landscaped terrace and rooftop gardens
- Gymnasium
- Restaurants and cafés
- Exclusive clubhouse
- Business lounge
- High speed automated elevators
- Indoor swimming pool
- Professional sound studios
- Serviced offices
- Cigar lounge and library
- LEED Platinum rated development
- Exclusive private terraces

Location Map



Not to Scale



Supertech House, B 28-29, Sector 58, Noida (UP) 201301, Ph.: 0120- 4572600 | www.supertechlimited.com
Site Off.: Plot No. 3, Sector-94, Noida (UP), Call 1800 103 7676 | www.supernova.in