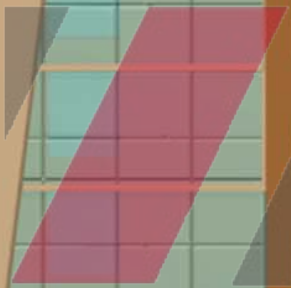


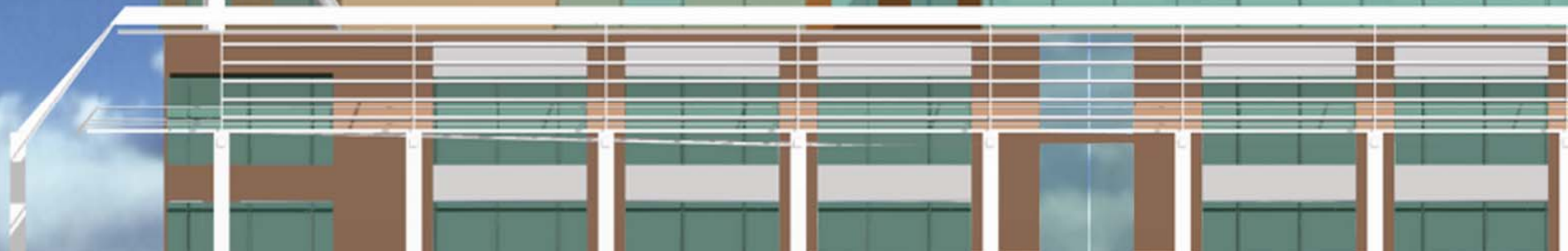


RAHEJA SQUARE



ZRICKS .COM

... redefining commercial spaces ...





Access plan



Location plan



Honda Activa(100m)

An 8-minute drive down the Jaipur Highway (NH-8) from Gurgaon, brings you to the most happening place in India - the Industrial Modern Township (IMT) being developed on about 5000 acres of land. This township in extension of Gurgaon is more popularly known as Japanese city, since over 80% of industry is set up by Japanese companies or their associates and subsidiaries namely Honda, Denso, Norcool, Mitsubishi, Videocon, Motorola, Johnson Matthey, Baxter and the prestigious ARAI. Some of these have already started their productions. This part of Gurgaon is at par with the latest standards being set in the international circuits - wider roads, more greenery, in-house clubs, golf course and other recreational areas, state-of-the-art communication link ups and connectivity's, etc.

Location

Strategically located Raheja Square is the first corner building open from all the four sides on the intersection of 200 feet wide road and the multi loop flyover connecting NH8 to the entire industrial area. The same flyover is connecting the industrial and institutional areas to the residential areas of IMT. Thus, Raheja Square will always remain the most commercially viable central shopping hub of the entire township. The complex also overlooks the picturesque Aravali Hills.

Locational Distances

IGI Airport 32 kms
Rajiv Chowk 13 kms
Qutab Minar 30 kms
Connaught Place 45 kms

Access

The NH8 is being widened to a 8-lane expressway between Gurgaon and New Delhi, putting flyovers and eliminating all red lights so that IMT gets connected to Delhi by a few minutes drive only.



ZRICKS.COM



Mitsubishi Electric (350m)



Denso (150m)



Baxter (300m)

The upper floors cater to the requirement of offices of reputed corporate giants, multinationals, call centers, etc through an independent access.

The lower floors house an integrated commercial complex providing the daily necessities of banking, insurance, communication, stationery, food and all other requirements as part of its endeavour to create a highly evolved and systematic commercial atmosphere that go with the day to day requirements of running corporate establishments. Raheja Square, the multistoried commercial tower is one of the latest buildings which sets its standard at par with the requirements of developed countries and is a trendsetter for development of future Indian commercial and residential infrastructure.

The complex houses the largest and cheapest integrated construction industry departmental store of Northern India where all the construction related materials will be handled through a fastrack ordering and dispatch system.

Raheja Square possesses strategic locational benefits like proximity to Delhi, International and domestic airports that provides quality life to employees. Guarded by strong industries and infrastructure concerning these industries, housing facilities and sophisticated planning, Raheja Square is surely the destination for Indian and multinational industrial and business



corporations offering new prospects for Industrial giants, Multinationals, PSUs, Insurance companies, Banks and big business houses.

Surely, a dream destination for the ones looking for a place away from the chaos --- The daily chores are met within an environment that inspires development and growth. Raheja Square, the gateway to IMT is situated on the right hand side while going from Gurgaon to Jaipur on the NH8 about 10minutes drive from Gurgaon. The site enjoys the benefit of being surrounded by the statutory green belt and pollution free environment which apart from providing clean ambience adds an aesthetic appeal and a sense of pride to the owners and workers alike.

The area falls under direct local dialing of Delhi/Gurgaon telephones and is within range of all local mobile telephone networks of Delhi and Haryana.

Besides all the above regular features there are some aspired infrastructure facilities that make the complex set apart, like the proposed helipad nearby that will promote international business and exports, banking, hospitals, township, club, golf course, shopping arcades and school sites all that will fulfill the daily requirements of a comfortable life. The upper floors cater to the requirement of offices of reputed corporate giants,

Promoters

Raheja Square is brought to you by M/s Raheja Developers Pvt Ltd. A name synonymous with quality, economy, efficiency and integrity for the real estate projects in India. All their projects deliver more than they commit and are delivered faster than committed.....always..... we don't just sell properties, we build goodwill and relationships.

Legal Status

The plot for commercial complex is purchased from HSIDC, Govt of Haryana under auction. The plans are sanctioned by HSIDC for commercial and shopping usage. It is freehold, sub-division is allowed and individual sale deeds will be executed.

Payment Plans

We have easy construction linked payment plans to help you purchase your commercial space. There are two options to suit your convenience. Making a down payment at the time of booking will entitle you to an attractive discount. Alternately pay just the booking amount and balance in construction linked interest free installments. The balance can also be paid through installments after availing loans from sponsor financial institutions subject to fulfilling their criteria.

Golden Opportunity

Raheja Square is the first commercial complex coming up at the best located corner at IMT. Within next one year the commercial space demand here is estimated to be much higher than the entire complex can cater to. Shifting of industry from non-conforming areas of Delhi has added to the booming construction activity going on all around at IMT. The coming year will see hundreds of middle & large scale industries with work force of several lacs teeming with activity at IMT.

So invest at the most happening place in India --- at a place which will give you assured returns better than any other investment. The space can be rented out instantly when ready. Step into the new era and a new place before it is too late. Raheja Square is being priced in a manner which will always give you premium on your hard earned money --- redefining commercial space.



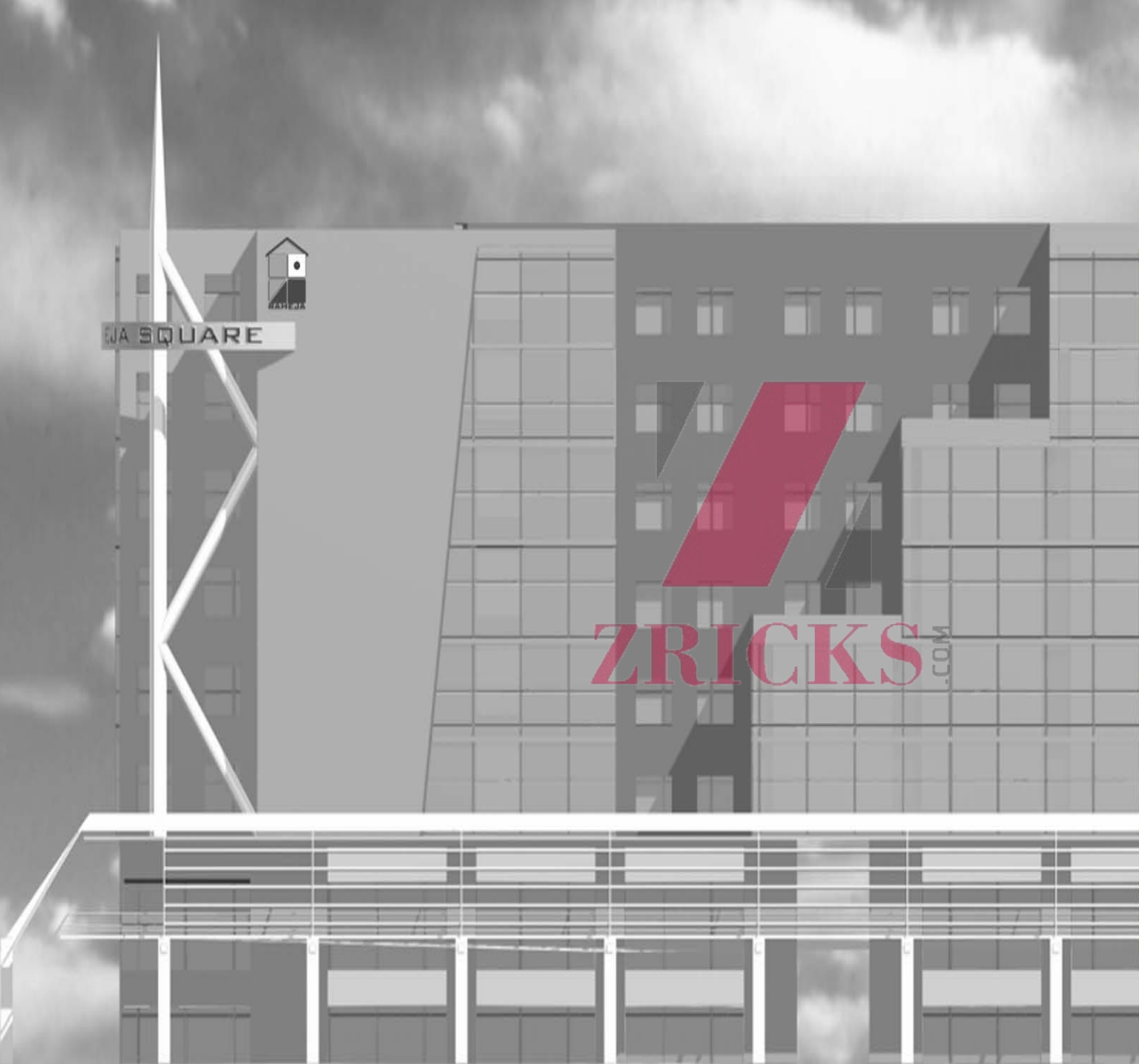
Ridge Castles



PINE GARDENS



Raheja Arcade



Salient features:

Design

- * Distinguished architectural design based on the latest concepts and specifications at par with the international standards conforming to Delhi's seismic code.
- * High efficiency floor plans with minimum super area.
- * Aesthetic external faÁade.
- * Energy efficient building with latest climatological controls.
- * Impressive entries and lobbies finished with granite, marble, glass, metal panels and dramatic landscaping.
- * Floor areas provided with cement/sand screed, ready for flooring.
- * Underwall telephone conduits with wiring all around.

Systems

- * Individual distribution board for each floor/office module.
- * Provision for Very Small Aperture Terminal (VSAT), Fibre Optic telecommunications.
- * All floors with separate provision for air-conditioning.
- * Standby generators.
- * Fire Protection system.
- * Central air conditioning system, AHU located on each floor.
- * Separate passenger and service lifts.
- * Provision for public address voice communication system.
- * Provision for built-in conduits for power, data and voice distributions.

Amenities

- * Generous parking facility -- over 700 vehicles parking in and around the complex including buses.
- * Interior and exterior terraces, gardens and landscaping.
- * Statutory green belt and service road around the complex between building and 200 feet wide roads.
- * Round-the-clock water supply.
- * Provision for health club.
- * Optional retiring rooms.
- * Professional property management.



View from the parking



View from the crossing



View from flvover over NH8

Referred by:



RAHEJA DEVELOPERS PVT LTD
Raheja Arcade, 307, City Centre, Sector 29, Gurgaon 122001
Ph: +91-11-6853309, 6854619, 9810263339 Fax: +91-11-6523631
www.rahejabuilders.com raheja@nda.vsnl.net.in



View from the 200' wide road