



ZRICKS

ASSOTECH  
The nESt

CROSSINGS REPUBLIK, NH-24, Ghaziabad-NCR

Nestled in happiness



Corporate Office: Assotech House, A-12, Sector - 24, Noida - 201301 (U.P.), India  
Tel: + 91 - 120 - 4015678 (30 lines), Fax: + 91 - 120 - 4015601 / 56, E-mail: home@assotechlimited.com

Site Office: Plot no. GH-06, Sector-1, Crossings Republik NH-24, Ghaziabad (U.P.) India  
Ph.: +91-8826350202, +91-9717657222, +91-8826004848, SMS 'AL' to 56006



Residential | Hospitality | Retail | Corporate | Facility Management

Disclaimer: All designs, perspective, elevation, specifications, layout plans and unit plans etc. are indicative and are subject to change.  
1 Sq. Meter = 10.763910 Sq. Ft.



Welcome to ASSOTECH The Nest – your own getaway in the middle of the urban rush. A sea of green, an escapade filled with space, The Nest is the perfect home for those seeking solace at the end of a hard day. Situated next to a large green belt and having lots of green spaces, The apartments are available in 2BR, 2BR+, 3BR, 3BR+. The apartments at The Nest are three side open and each tower is equipped with high-speed lifts. Once you step out from the lift, you discover the spaciousness and exceptional ventilation of the apartments. Care has been

taken to make your guests feel comfortable right from the entrance lobby. A double-height entrance lobby ensures every visitor a grand welcome. We've also ensured that there are enough recreational and fitness facilities to give the residents an all round happy life. There's no compromise made for the project's security. With round the clock vigilance through CCTVs installed all round. Finally, with life-long management facilities, we have ensured that your life at The Nest is complete in every way possible.



TRICKS

ASSOTECH  
**The nest**  
CROSSINGS REPUBLIK, NH-24, Ghaziabad-NCR



# Site Plan

# Tower F



1 sq. mt. = 10.763910 sq. ft.

## Unit Plan

**2 Bedroom**  
Super Area : 1245 Sq.ft.

- Living / Dining
- Master Bedroom
- Two Toilets
- Children Bedroom
- Kitchen with Service Balcony
- Two Large Balconies

**2 Bedroom**  
Super Area : 1380 Sq.ft.  
with Multipurpose Room

- Living / Dining
- Master Bedroom
- Children Bedroom
- Three Toilets
- Two Large Balconies
- Multi purpose Room
- Kitchen with Service Balcony

# Tower F



1 sq. mt. = 10.763910 sq. ft.

## Unit Plan

**3 Bedroom**  
Super Area : 1640 Sq.ft.

- Living / Dining
- Master Bedroom
- Children Bedroom
- Two Toilets
- Two Large Balconies
- Kitchen with Service Balcony
- Guest Bedroom
- Powder Room

**3 Bedroom**  
Super Area : 1790 Sq.ft.  
with Multipurpose Room

- Living / Dining
- Master Bedroom
- Children Bedroom
- Three Toilets
- Two Large Balconies
- Multi purpose Room
- Kitchen with Service Balcony
- Guest Bedroom
- Powder Room

# Tower G



1 sq. mt. = 10.763910 sq. ft.

## Unit Plan

**2 Bedroom**  
Super Area : 1245 Sq.ft.

- Living / Dining
- Master Bedroom
- Two Toilets
- Children Bedroom
- Kitchen with Service Balcony
- Two Large Balconies

**2 Bedroom**  
Super Area : 1655 Sq.ft.  
with Multipurpose Room

- Living / Dining
- Master Bedroom
- Three Toilets
- Children Bedroom
- Kitchen with Service Balcony
- Two Large Balconies
- Multi Purpose Room
- Entrance Foyer

# Tower G



1 sq. mt. = 10.763910 sq. ft.

## Specifications (Tower F & G)

Location /Area	Floors	Fixtures & Fittings	Walls	External doors & windows fittings
Living Room	Vitrified Tiles	Modular switches / Sockets, Telephone, Cable TV	Oil Bound Distemper with POP Cornice	Main entry Door - Skin door, Bed Rooms - Polished Flush Doors (BST), Hard Wood door frames, Powder Coated Aluminium windows with Flymesh (Outside windows only)
Dining Room				
Bed Rooms				
Master Bed Room	Laminated Wooden Flooring	Modular Switches / Sockets, Telephone, Cable TV & Internet		
Toilets	Anti skid Ceramic Tiles	White colour Sanitary / Chinaware, Branded Chrome Plated Fixtures and Green marble counter	Tiles upto 7' level on all walls	
Kitchen	Anti skid Floor Tiles	Branded Chrome Plated Fixtures, Granite counter, Stainless Steel sink with single drain board	Tiles above counter (2 Ft)	Polished & Painted Flush door (OST), Hard Wood door frames, Powder Coated Aluminium windows with Flymesh (Outside windows only)
Balconies	Ceramic Tiles	M. S. Railing	Weather Proof Paint	
Staircase	Kota Stone		Lime Wash	
Entrance Lobby	Designer stone flooring	CCTV, Furniture & Security etc.	Oil Bound Distemper with POP cornice, False ceiling with recessed light fittings	Swinging entrance Aluminium door and Aluminium window
Corridor	Designer vitrified tile flooring		Green marble on lift fascia & Oil bound distemper with POP cornice on walls	Aluminium window
Power Back up	Provision For Power Back up for Common areas and Essential Services			
Structure	Earthquake Resistant RCC Framed Structure			
External Façade	Permanent Textured Finish			

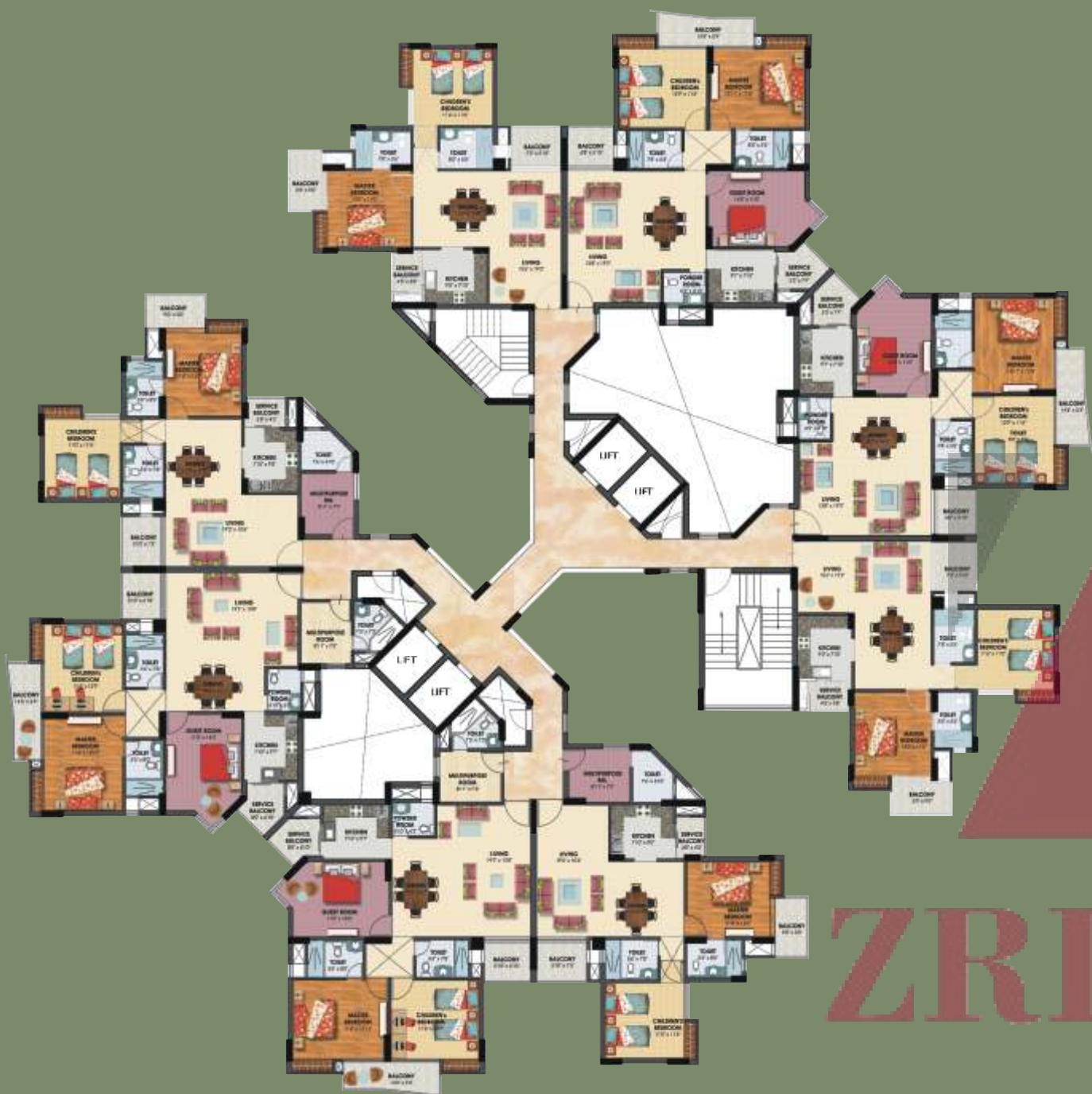
# Unit Plan

**3 Bedroom**  
Super Area : 1730 Sq.ft.

- Living / Dining
- Guest Bedroom
- Master Bedroom
- Three Toilets
- Children Bedroom
- Kitchen with Service Balcony
- Three Large Balconies





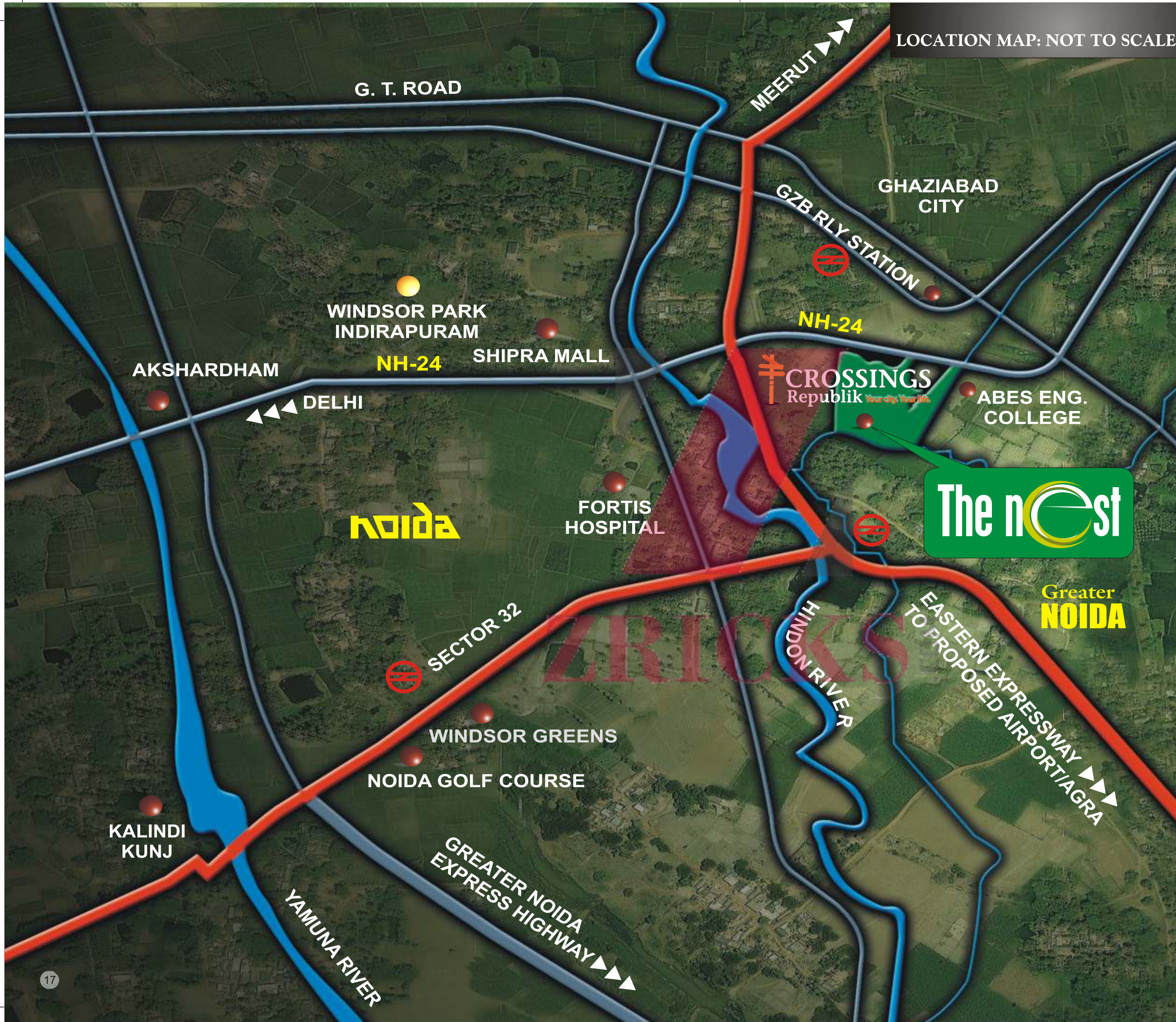


Cluster Plan - F



Cluster Plan - G

ZRICKS.COM



LOCATION MAP: NOT TO SCALE

ASSOTECH  
**The nEst**

CROSSINGS REPUBLIK, NH-24, Ghaziabad-NCR

# Location Map

### Distances from THE NEST

Fortis Hospital	- 15 minutes
Metro Station Noida	- 20 minutes
Noida Golf Course	- 20 minutes
Kailash Hospital	- 20 minutes
Amity University	- 25 minutes
Ghaziabad Station	- 15 minutes
Indirapuram/Shipra Mall	- 10 minutes
Delhi	- 30 minutes
Greater Noida	- 20 minutes
Faridabad	- 40 minutes

**The nEst**

- Crossings Republik
- ⊘ Proposed Metro Stations

**ASSOTECH**  
**The nest**  
 CROSSINGS REPUBLIK, NH-24, Ghaziabad-NCR



**Salient features of The Nest**

- Freehold hassle free property
- Corner plot with 3-side open apartment
- 30% more storage area, 70% open area for basic amenities
- Double height lounge in each tower
- Multiple play areas and green spaces
- 3 high speed elevators in each tower
- Spread over an area of 8.25 acres having 7 towers in the premises
- Three side open project located on the main road connecting to NH 24, Noida, Greater Noida and adjoining Master Green belt of Crossings Republik
- Designed by renowned architect Mr. S. K. Das
- Beautifully landscaped parks inside the complex
- A bunch of lot many facilities such as: Children play areas, Central parks, State-of-the art Club house with facilities like swimming pool, Fully equipped gymnasium, Yoga room, Conference rooms, table tennis, badminton courts etc., Two-level basement parking, High speed elevators in each tower & many more.
- Squash Court
- Open Party Lawn
- Hot and Cold Shower
- Banquet Hall
- Restaurant

**USPs of the Nest**

- 9 inches thick brick work on the outer periphery of buildings
- Double coat outer plaster with water proofing compound
- 3 phase wiring as compared to single phase wiring done by most of the builders
- Life-long maintenance of property by a 100% subsidiary company named Express Hospitality

**Customers Speak**

I feel proud to be a part of "The Nest" project. One of the main reasons why I choose to book a flat in "The Nest" project is the cooperative management, marketing team & the advantages that the campus has, like abundant space, greenery, and visually enchanting peaceful and serene atmosphere. Assotech has become a big brand name in the market and that's why I feel happy to be a part of it.

Mr. Mithun  
 Senior Visualizer  
 INS Publishing Pvt. Ltd.  
 Flat No. A-001

I feel proud to be a part of 'Assotech The Nest project' at Crossings Republik. One of the main reasons for buying flat in the project is the well managed system of the company and their cooperative & efficient marketing team. Advantages which I have explored within the campus are abundant spaces, greenery, visually enchanting peaceful and serene atmosphere. Overall Crossings Republik is a well developed township and The Nest makes us feel very happy to be a part of Assotech Family.

Mrs. Kalpana Koul  
 Housewife  
 A-006

**The Nest Phase-2 is ready for possession**

**Over 300 families have already shifted to The Nest**

**Crossings Republik** is the brainchild of seven prestigious builders. After successful completion of over 62 projects in more than 25 years of existence, the consortium brings to you, Crossings Republik. The Township is truly global just like the companies that have crafted it. With their exquisite designs, US based Sasaki Associates have made a mark across America, Europe, Middle East and South East Asia. Spread over 360 acres on National Highway 24, Crossings Republik is easily accessible from Noida, Greater Noida and Ghaziabad. To add to it all, this ultra modern global city has world class amenities to ensure that you live the way you always desired.

**Crossings Republik Unique Features:**

- Crossings Republik all set to get PNG supply
- Golf Course and driving range
- Resort-like landscaping with water bodies
- Five star hotel
- Shopping mall
- Retail outlets
- Stadium
- Community Center - School, colleges, university
- 24-hour hi-tech security
- Power station - Post office, police station, fire station
- Approved freehold property
- Hospital, Multiplex
- Easy connectivity
- Piped Gas
- Artificial lake

**Crossings Republik Highlights:**

- Convenience spread across 360 acres.
- Bringing the world closer with its location, just 20 kms from Connaught place.
- Adjoining Noida, Greater Noida & NH- 24
- Address of 8000 happy families
- Zero Discharge - Green township , eco-friendly & self sustainable
- Lavish & functional 9 hole golf course & Golf academy
- Towards a greener environment with a plantation of over 30,000 trees
- Designed by SASAKI ASSOCIATES , BOSTON - USA in association with SK Das Associated architects



**CROSSINGS Republik**  
 Your city. Your life.

# About Assotech

The seeds of "Assotech Limited" were planted in the year 1987 by Mr. Sanjeev Srivastva, a distinguished Civil Engineer. Assotech Limited, is one of the leading real estate companies with 25 years of rich experience. It is advancing at fast pace to be one of the most creative, innovative and lustrous company of **Residential, Retail, Corporate, Hospitality and Healthcare** spaces in the country.

Assotech Ltd. with the motto 'Next Generation Spaces' aims to change the meaning of Real Estate Development in the country by providing wide range of products and concepts ranging from **budget homes to luxury condominiums, serviced apartments to 5-star hotels, office complexes to IT/ITES buildings, shopping complexes to Mall-cum-multiplexes.**

Currently the group is developing projects in various verticals of real estate in states like Delhi-NCR, Uttar Pradesh, Haryana, Madhya Pradesh, Uttarakhand, Odisha, Bihar & Jharkhand. The group has close to Rs.33 billion worth of projects under various stages of development and execution. Assotech Ltd. has already handed over 7 million square feet built up area to its esteemed customers. Presently, the group is constructing approximately 8 million square feet of real estate area.

The group has developed "Radisson Blu Hotel Metropolis Rudrapur" - a 120 room first five star property in Rudrapur, Uttarakhand and is coming up with another such hospitality project very close to Biju Patnaik Airport in Bhubaneswar, Odisha.

Recognised for its impeccable foresight, enviable expertise and innate acumen, Assotech is an ISO 9001:2008 Company. Its innovative projects are symbol of "Reliability with High Quality" undertaken with extensive research-led engineering, design and construction experiences with strong observance to ethical business practices. Assotech's penchant for finer details actually defines its concepts.

The Company is promoted and managed by a team of technocrats and professionals having in-depth understanding of Real Estate Sector with an impressive track record of performance and customer satisfaction. Assotech has strength of 1250 employees across all verticals.

Assotech group with its careful nurturing, imaginative thinking and commitment to customer satisfaction has brought smiles to over 10,000 esteemed customers.

## RESIDENTIAL PROJECTS

### UTTAR PRADESH: NOIDA-

- Golf Vista
- Windsor Greens

### GHAZIABAD-

- Assotech The Nest Phase-I Crossings Republik
- Windsor Park - Indirapuram

### MADHYA PRADESH:

- GWALIOR-Assotech Windsor Hills Phase-I & II

### UTTARAKHAND

- RUDRAPUR-Metropolis City Phase-I & II

### ODISHA:

- BHUBANESHWAR- Cosmopolis Phase-I & II

### RETAIL

#### UTTAR PRADESH:

- GHAZIABAD- Windsor Street

### HOSPITALITY

#### UTTAR PRADESH:

#### GHAZIABAD-

- Windsor Club
- Cabana Serviced Apartments

#### UTTARAKHAND:

- RUDRAPUR- Radisson Blu Hotel Metropolis

### CORPORATE SPACE

#### UTTAR PRADESH:

- NOIDA- Assotech One

## RESIDENTIAL PROJECTS

### UTTAR PRADESH:

#### NOIDA-

- Windsor Court
- Celeste Towers

#### GHAZIABAD-

- Assotech The Nest Phase-II Crossings Republik

### HARYANA:

#### GURGAON-

- Assotech Blith

### MADHYA PRADESH:

- GWALIOR-Assotech Windsor Hills Phase- III

### UTTARAKHAND:

- RUDRAPUR-Metropolis City Phase-III

### ODISHA:

- BHUBANESHWAR- Cosmopolis Phase-III

### RETAIL

#### UTTARAKHAND:

- RUDRAPUR-Metropolis Mall

### ODISHA:

- ANGUL-Modern Bus Terminal Complex

### HOSPITALITY

- BHUBANESHWAR- Radisson Blu Hotel Airport
- ANGUL

### CORPORATE SPACE

- Gwalior
- Angul
- Bhubaneswar

## RESIDENTIAL

- Delhi NCR
- Ranchi, Patna
- Rudrapur
- Bhubaneswar
- Gwalior



CROSSINGS REPUBLIK, NH-24, Ghaziabad-NCR

## CORPORATE SPACES

- Delhi NCR
- Gwalior
- Angul
- Bhubaneswar



## HOSPITALITY

- Radisson Blu Hotel Metropolis Rudrapur
- Radisson Bhubneswar
- Hotel Angul



## RETAIL

- Rudrapur
- Angul

# Completed and Ongoing Projects

### Upcoming Projects:

Residential Projects: Haryana: Faridabad, Gurgaon; Jharkhand: Ranchi; Odisha: Bhubaneswar