

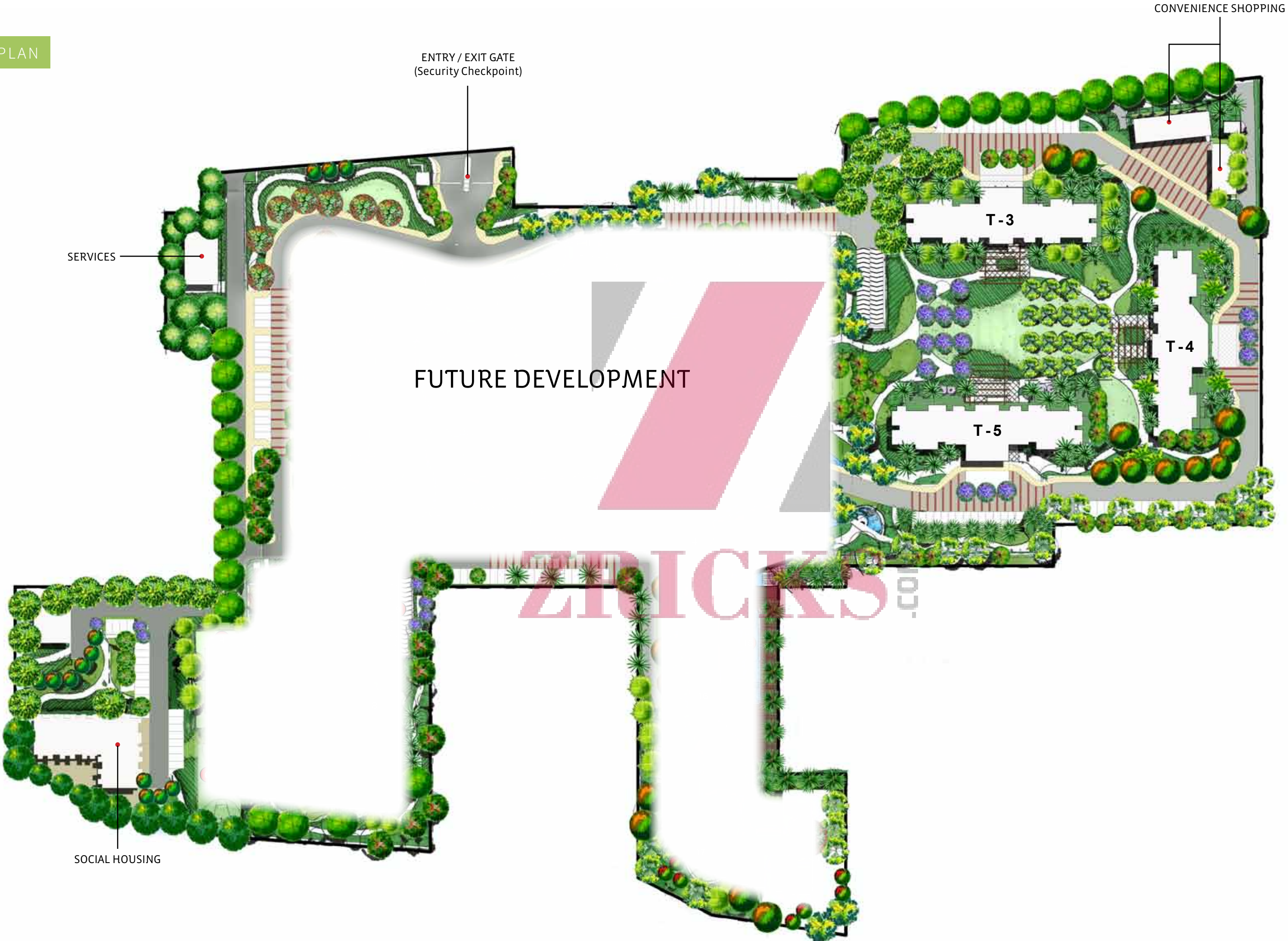


The Finer
Details

— **unitech** —
The one



Master Plan



NOTE:

With bareshell apartments you now have the flexibility to design your home according to your taste and requirements. You can alter the space by removing the wall between adjoining rooms for a palatial room, or have a spacious bathroom or adorn your kitchen with customized imported modular kitchenette – the options are endless.

In all the following floor plans, the walls in light grey hatch can be altered for bareshell units. Whereas, the dark hatch represents walls/columns which cannot be altered to maintain structural solidarity.

ZRICKS.COM

Tower 4 Floor Plans

Towers 4 101 & 102*

Super area: 4410 sq. ft.# | Terrace area: 100 sq. ft.#

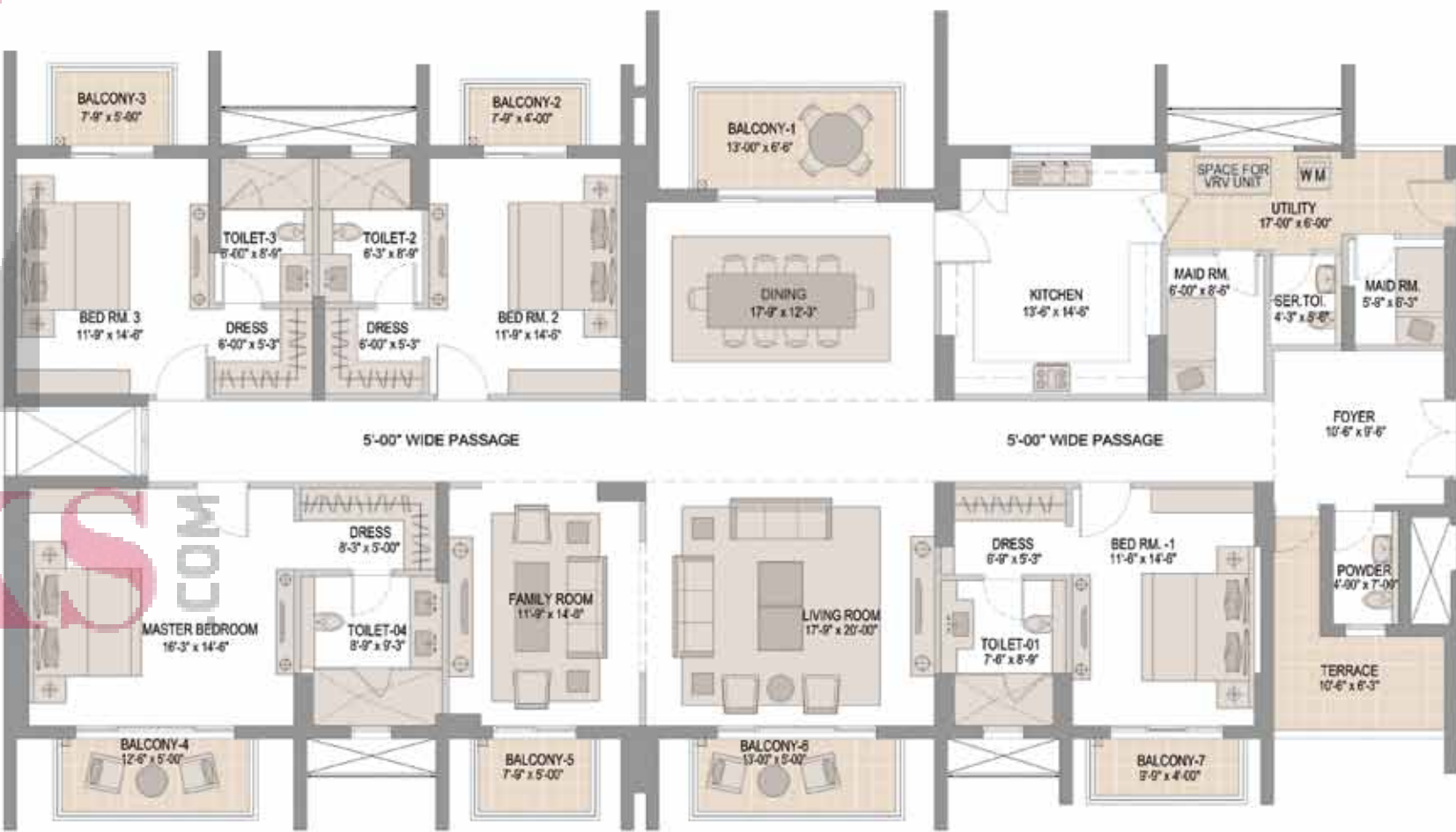


*Indicates mirror image

*1 ft. = 0.3048 mtr. and 1 sq. ft. = 0.093 sq. mtr.

Towers 4 201 & 202*

Super area: 4470 sq. ft.# | Terrace area: 110 sq. ft.#



*Indicates mirror image

*1 ft. = 0.3048 mtr. and 1 sq. ft. = 0.093 sq. mtr.

Towers 4 301 to 2601 & 302* to 2602*

Super area: 4475 sq. ft. #



*Indicates mirror image

#1 ft. = 0.3048 mtr. and 1 sq. ft. = 0.093 sq. mtr.

Tower 3 & 5
Floor Plans

Towers 3 & 5 101 & 102*

Super area: 4425 sq. ft.# | Terrace area: 105 sq. ft.#

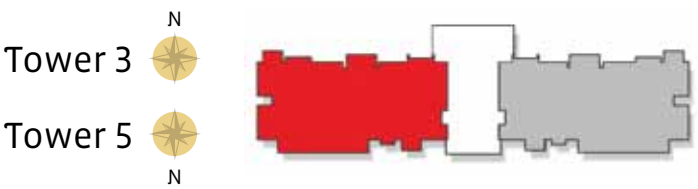


*Indicates mirror image

*1 ft. = 0.3048 mtr. and 1 sq. ft. = 0.093 sq. mtr.

Towers 3 & 5 201 & 202*

Super area: 4435 sq. ft.# | Terrace area: 110 sq. ft.#



*Indicates mirror image

*1 ft. = 0.3048 mtr. and 1 sq. ft. = 0.093 sq. mtr.

Towers 3 & 5

- 301 & 302*
1101 & 1102*
2001 & 2002*
- 701 & 702*
1601 & 1602*
2401 & 2402*

Super area: 4650 sq. ft.*



Towers 3 & 5

- 401 & 402*
1201 & 1202*
2101 & 2102*
- 801 & 802*
1701 & 1702*
2501 & 2502*

Super area: 4415 sq. ft.*



*Indicates mirror image

*1 ft. = 0.3048 mtr. and 1 sq. ft. = 0.093 sq. mtr.



*Indicates mirror image

*1 ft. = 0.3048 mtr. and 1 sq. ft. = 0.093 sq. mtr.

Towers 3 & 5

- 501 & 502*
- 1401 & 1402*
- 2201 & 2202*
- 901 & 902*
- 1801 & 1802*
- 2601 & 2602*

Super area: 4490 sq. ft.*



Towers 3 & 5

- 601 & 602*
- 1501 & 1502*
- 2301 & 2302*
- 1001 & 1002*
- 1901 & 1902*

Super area: 4435 sq. ft.*



*Indicates mirror image

*1 ft. = 0.3048 mtr. and 1 sq. ft. = 0.093 sq. mtr.

*Indicates mirror image

*1 ft. = 0.3048 mtr. and 1 sq. ft. = 0.093 sq. mtr.

The finishing touches

STRUCTURE

Earthquake resistant RCC framed construction

WALL FINISH

External

Combination of stone, GRC panels, screens and paint finish

Internal

Unplastered Brick Walls

Lift Lobbies

Select Marble/ Granite cladding and Acrylic Emulsion Paint/ Texture Paint

FLOORING

All Rooms/Balconies/Terraces

RCC slab without floor finish

Kitchen and Toilets

RCC slab without floor finish with sand filling and water proofing done

Lift Lobbies

Select Marble/ Granite/ Stone

Staircase

Stone

PLUMBING AND SANITARY

Kitchen and Toilets

Provision for drainage and water supply in the shaft

DOORS

Main Entrance

Flush shutter/ Moulded skin door with padlock

Internal

No internal door frames and door shutters will be provided

External

Energy efficient toughened UPVC/ Aluminium double glazed units

WINDOWS

Energy efficient UPVC/ Aluminium units

Double glazing for all units (except toilets and kitchen)

ELECTRICAL

Electrical wiring till the MDB, no internal wiring in the apartment

Concealed conduits in the ceiling slabs upto drop points

POWER BACK-UP

24 x 7 power back-up

AIR-CONDITIONING

Provision for VRV air-conditioning

ELEVATORS

2 High-speed passenger and 1 service elevator

BALCONIES

Toughened Glass and SS Railing Balconies in all apartments

OTHER AMENITIES

Provision for piped gas

Fire fighting and detection system

COMMUNICATION

Fiber to the home based system for multiple services such as internet, telephony, television etc. on single cable.

SECURITY

Three tier security and audio/ video intercom connectivity at the main entrance

Security check points at main entry, tower entry, basement entry and apartment entry

Coloured screen video door phone



ZRICKS.COM