



**AMRAPALI
GROUP**

ENDLESS WORLD OF YOUR
REAL DREAMS

AMRAPALI
GOLF HOMES
PRESENTS

ZRICKS COM 
**AMRAPALI
KINGSWOOD**

2, 3 BEDROOM  LUXURY APARTMENTS
G.NOIDA (WEST)



o
o
l
f
c
o
o
u
r
s
e

Conservation of greens, preservation of pleasure parks and development of leisure avenues are all the key highlights of Amrapali Kingswood. The development of a golf course within the precincts, not only assures of international standard amenities but also offers lush green landscape to the entire complex. The stunning range of conveniences at the finger tips of the residents presents Amrapali Kingswood as a township in totality - self sufficient, self - reliant, all - encompassing.

just blur the outer world
live amongst paradisaical greens

ZRICKS



In our continuous quest for serenity and harmony in life we seek a situate that would relax and rejuvenate our heart, body and soul, while keeping us linked to essential activities of our day to day life. Amrapali Kingswood will open for you the doors of unmatched luxury and majestic living, set amidst idyllic surroundings. Every view of exterior will look like a life-sized painting and every angle of the place will extend an invitation to a blissful living.

celebrate majestic lifestyle with exclusive golf club

- Exclusive Membership Club
- Pro Shop
- Luxurious Club Lounge
- Golf Training Facility with Qualified Trainers
- Well Trained Staff for Golf Support
- Restaurant and Coffee Shop
- Gym, Swimming Pool & Indoor Games

g
o
l
f
c
l
u
b



SHARE THE WINNERS VISION

M.S. Dhoni

Amrapali Kingswood is designed to bring in quality of life into everyday living. Perfectly planned & qualitatively constructed, it is a treasure house of amicable amenities, lavish luxuries & cool conveniences...all ingredients that go into creating a lifestyle tailor made for the trendsetter of today.

Comfort and convenience being the key concern, the architectural edifices have been circumspectly premeditated and executed. An outstanding fusion of modernity and eloquent structural designs stand here to be admired.

In an effort to utilize the space to its optimum, a widespread methodology has been adapted to augment all the micro as well as macro details, whereby the distinction between nifty interiors and ingenious exteriors becomes almost invisible.

- 2 Level Security System
- Earthquake Resistant Structure
- 100% Power Back up and Water Supply for Common Facility
- Intercom for Every Apartment
- Swimming Pool & Kid's Pool
- Club with Sports, Health, Leisure & Entertainment Facilities
- State of the Art Gym
- Medical Facility
- Green Open Space
- CCTV Cameras for Common Areas

AMRAPALI
KINGSWOOD
2, 3 BEDROOM LUXURY APARTMENTS
G.NOIDA (WEST)

ZBRICKS.COM





LIVING



DINING

Amrapali Kingswood will open for you the doors of fantastic luxury homes set amidst idyllic green surroundings. The comfort and convenience of the residents has been the key concern in designing of apartments.

Every nook and corner of the interior has been designed with optimum space management, offering ample day light and proper ventilation to all areas. Undoubtedly every room will emerge with distinct ambience. Amrapali Kingswood promises you a lifetime of comfort, opulence, blissful living and simply a paradise-like-home.

AMRAPALI
KINGSWOOD
 2, 3 BEDROOM LUXURY APARTMENTS
 G.NOIDA (WEST)



KITCHEN

LIVING
 SIDE



BEDROOM



- TRICKS**
- Well-Lit and Spacious Rooms
 - Optimum Space Utilisation
 - Vaastu Friendly Layout
 - Semi-Modular Kitchen
 - Designer Bathrooms
 - Large Balconies
 - 24x7 Power Back-up
 - 24 Hrs. Water Supply



BATH

interiors



TENNIS



BASKET

Amrapali Kingswood has an awe inspiring aura. Designed to meet the needs of its residents, the activity arena compliments an exotic lifestyle. Landscaped parks & greens, joggers' track, outdoor play areas for different age groups, basket ball & badminton courts - all liven up each moment at Amrapali Kingswood. Pollution free open grounds enrich both body and mind. Soak in the luxury of a superb lifestyle at Amrapali Kingswood !

BADMINTON COURTS



SQUASH



POOL



AMRAPALI KINGSWOOD
2, 3 BEDROOM LUXURY APARTMENTS
G.NOIDA (WEST)

GYM



ZRICKS

- State of the Art Gymnasium
- Squash Courts
- Video Games Parlour
- Skating Rink
- Snooker Table
- Badminton Courts, Basket Ball Courts and Tennis Courts

a
c
t
i
v
i
t
i
e
s



SAUNA



MEDITATION

Every activity has been extensively planned, keeping in mind the metropolitan lifestyle of the prospective residents. Extending an invigoration ambience, the club at Amrapali Kingswood captivates both body & mind. The inviting pools, reading rooms and amusement programs would go a long way in exhilarating all age groups. Be it an early swim, a leisurely stroll, a dip in the pool, a flick through magazines - Amrapali Kingswood is sure to revitalise all the residents. Refreshing, relaxing and rejuvenating, the club area is destined to be abuzz with activity.

CLUB ACTIVITIES



SPA

AMRAPALI KINGSWOOD
2, 3 BEDROOM LUXURY APARTMENTS
G.NOIDA (WEST)

POOL



ZRICKS CLUB

- Restaurants
- Grand Multi-Purpose Party Hall
- Yoga and Meditation Hall
- Spa with Sauna, Steam and Jacuzzi
- Swimming Pool
- Splash Pool for Kids



RESTAURANT

a m e n i t i e s



SCHOOL



PARKS

Observe how 'Vibrant Greenery' and 'Serene Sky' weave a magical carpet of spellbinding surrounding! Landscaping and parks will be revered by one and all, thus enabling them to pursue a pure and delightful life. Away from noise, pollution, clutter, stress, strain and frustrations of the cramped up lifestyle, Amrapali Kingswood comes as a breath of freshness. The mood enhancing, heart-warming, soul-lifting ambience is the gift Amrapali Kingswood offers to its potential residents.

AMRAPALI
KINGSWOOD
2, 3 BEDROOM LUXURY APARTMENTS
G.NOIDA (WEST)



PARKS

SAFETY AND SECURITY



JOGGING

ZRICKS

- Beautifully Landscaped Gardens
- Jogging Track
- School & Creche
- Gated Community
- 24x7 Security



CCTV

U
N
I
V
E
R
S
I
T
Y



HIGHWAY



AMRAPALI
KINGSWOOD
 2, 3 BEDROOM LUXURY APARTMENTS
G. NOIDA (WEST)

- Next to Sec. 121, Noida
- Near Proposed Metro Station
- Close to Pari Chowk-II
- Easily Accessible via DND, NH-24
- Super Speciality Fortis Hospital in Proximity
- Vicinity of Sai Mandir
- Close to Sec. 18, Noida



METRO



STRUCTURE

Earthquake Resistance RCC Framed.

BEDROOMS

FLOOR : Flooring with Vitrified Tiles / Equivalent & Laminated Wooden Flooring in Master Bedroom.
 WALLS : OBD Paint. CEILING : Designer POP.

LIVING / DINING / LOBBY PASSAGE

FLOOR : Vitrified Tiles / Equivalent. WALLS : OBD Paint. CEILING : Designer POP.

KITCHEN

WALLS : Designer Ceramic Tiles with Highlighter in between upto 2 ft. above the Counter.
 FLOOR : Combination of Anti Skid Ceramic Tiles / Vitrified Tiles.
 COUNTERS : Granite Working Platform. FITTINGS / FIXTURES : CP Fittings, Stainless Steel Sink.
 WOOD WORK : Semi-Modular Kitchen.

TOILETS

WALLS : Designer Ceramic Tiles. FLOOR : Combination of Anti Skid Ceramic Tiles / Vitrified Tiles.
 FITTINGS / FIXTURES : ISI Mark Fittings, Standard Chinaware Fixtures & Fittings for Geyser Water Supply.
 WATER : Hot and Cold Water Pipeline Provision.

LIFT LOBBY

FLOOR : Combination of Different Colours of Marble / Stone in Pattern.
 WALLS : Tiles Cladding upto 3 Ft. and Texture Paint above.
 ELEVATOR : High Speed Elevator.

ELECTRICAL

Modular Switches. 24 Hrs. Power Backup Provision.

WATER

Drinking Water Treatment Facility by Individual R.O. System.

DOORS

ENTRANCE DOORS : Hardwood Frame with Flush Door Shutter with Teak Veneer Top and Melamine Polish.
 INTERNAL DOORS : Polished Skin Doors.

WINDOWS

UPVC.

BALCONY

FLOOR : Anti Skid Ceramic Tiles. WALL & CEILING : OBD Paint.



specifications

ZRICKS .COM

Map Not To Scale




AMRAPALI
KINGSWOOD
 2, 3 BEDROOM LUXURY APARTMENTS
 G.NOIDA (WEST)



LEGEND

- | | |
|---------------------|---------------------|
| 1. MAIN ENTRANCE | 7. TENNIS COURT |
| 2. AMPHITHEATRE | 8. SIT-OUT PAVILION |
| 3. JOGGING TRACK | 9. KIDS ZONE |
| 4. LAWN | 10. WATER BODY |
| 5. CLUB HOUSE | 11. SWIMMING POOL |
| 6. BASKETBALL COURT | |

- 2 BHK (835 SQ. FT.)
- 2 BHK + 2 TOILET + STUDY (945 SQ. FT.)
- 3 BHK + 2 TOILET (1115 SQ. FT.)
- 3 BHK + 2 TOILET (1115 SQ. FT.) OPTION 1

12 M WIDE ROAD

45 M WIDE ROAD

CLUB HOUSE

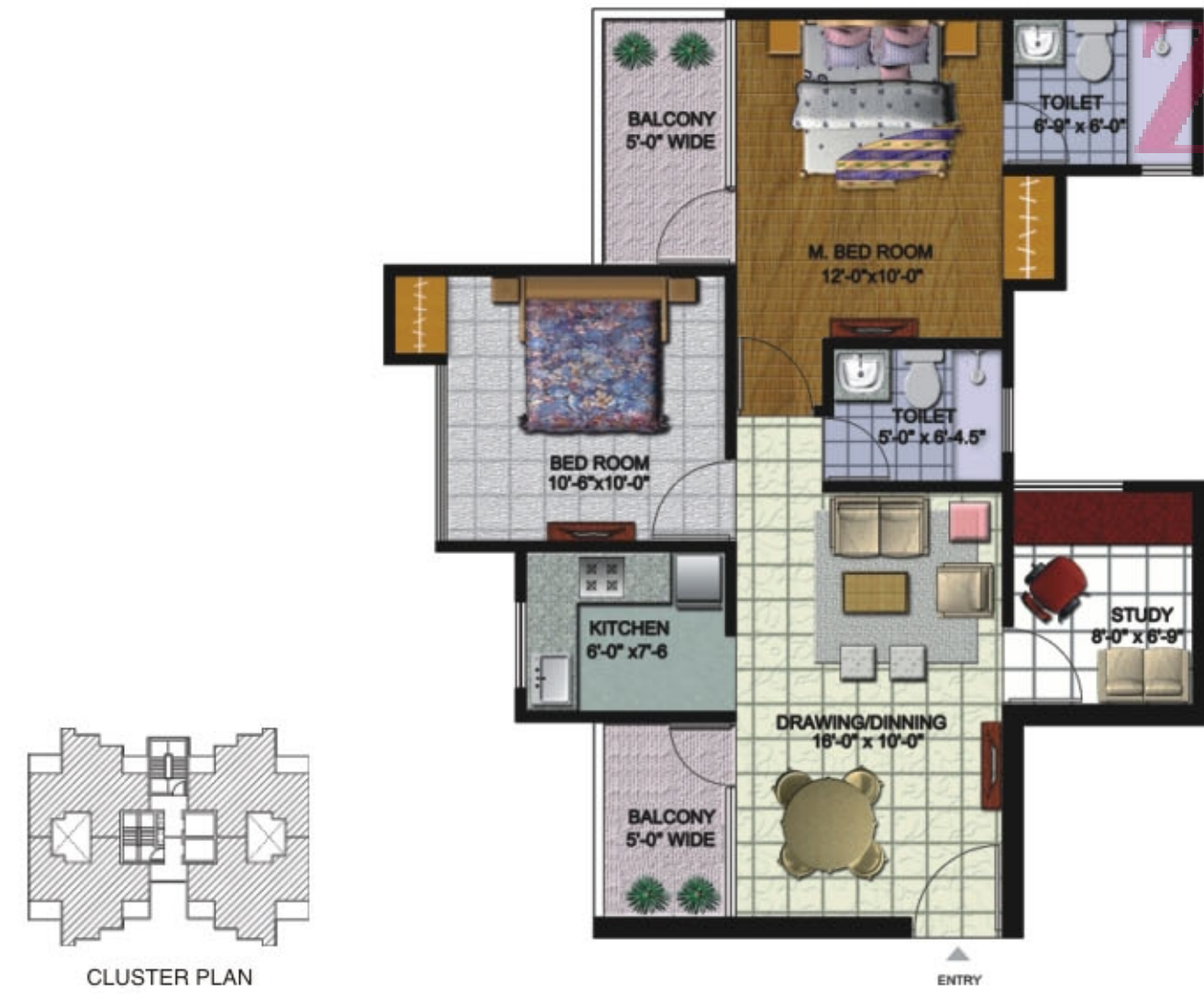
2 BHK + 2 TOILETS (Super Area 835 sq.ft.)



3 BHK + 2 TOILETS (Super Area 1115 sq.ft.) (Option-01)



2 BHK + 2 TOILETS + STUDY (Super Area 945 sq.ft.)



3 BHK + 2 TOILETS (Super Area 1115 sq.ft.)



ZRICKS.COM



AMRAPALI MALL, VRINDAVAN



AMRAPALI SILICON CITY, SEC. 76, NOIDA



AMRAPALI VANANCHAL CITY - BHILAI



COMPLETED

AMRAPALI VAISHALI, VAISHALI



AMRAPALI EMPIRE - GHAZIABAD



AMRAPALI PRINCELY ESTATE - SECTOR 76, NOIDA



COMPLETED

AMRAPALI VILLAGE, INDIRAPURAM



POSSESSION STARTED

AMRAPALI PLATINUM - NOIDA



AMRAPALI SAPPHIRE - NOIDA



COMPLETED

AMRAPALI ROYAL, INDIRAPURAM



COMPLETED

AMRAPALI GREEN, INDIRAPURAM



AMRAPALI TECH-PARK, GREATER NOIDA

24 Cities more than 50 Projects

Spreading Smiles Across India

Various aspects of Real Estate and Construction have been explored by Amrapali Group to such a grand extent that it has become a brand name. In the last couple of years Amrapali Group has contributed in the phenomenal growth of real estate and infrastructure industry with many turnkey solutions through multifaceted residential and commercial projects.

The group fully understands the importance of quality and ensures the best of technology, planning, design and construction for all of its projects. This has resulted in the transformation of its projects - Amrapali Green, Amrapali Royal, Amrapali Village, Amrapali Awadh, Amrapali Vaishali & Amrapali Grand Apartments into landmarks.



AMRAPALI GROUP



Developing India

**AMRAPALI
GROUP**

CORP. OFFICE : C-56/40, Sector 62, Noida (Near FORTIS) | Ph. : 0120-4055555 | Fax : 0120-4233556

Email : mkt@amrapali.in | Website : www.amrapali.in | SMS "Amrapali" to 56677

Master Planning by :



Architect :



APARTMENTS • MALLS & MULTIPLEXES • SEZs • IT PARKS • HOTELS • HOSPITALS • EDUCATION • FMCG (Mum's)

Note : Visual representations shown in this brochure are purely conceptual. All Building Plans, Specifications, Layout Plans etc. are tentative and subject to variation & modification by the company or the competent authorities sanctioning plans. Brand names appearing in the brochure are for artwork purposes only.