



ZBRICKS





ZRICKS



ZRICKS



ZRICKS



ZBRICKS



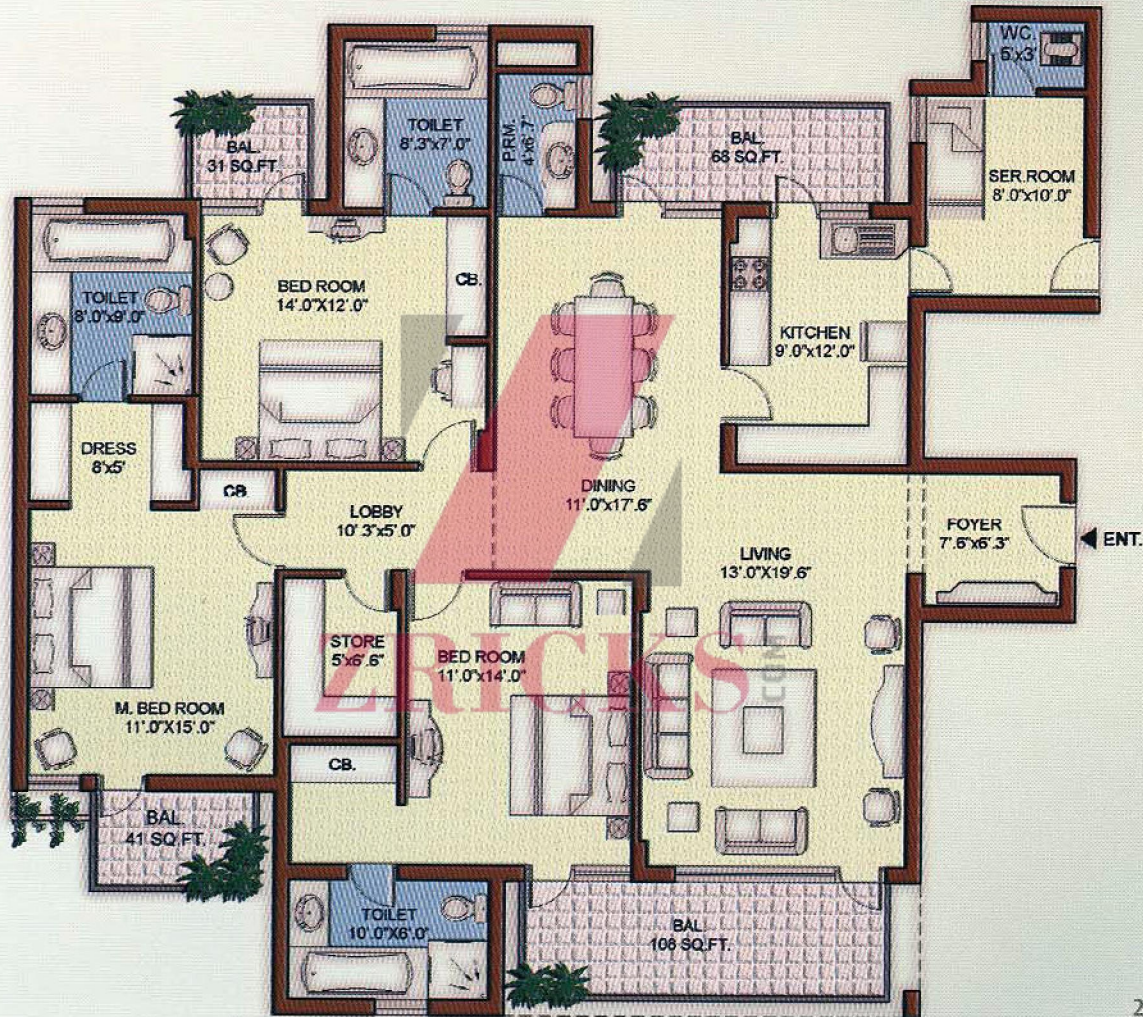
ZTRICKS



Specifications

Location	Walls	Floors	Doors	Windows/Glazings	Ceilings	Others
Living/Dining	Acrylic Emulsion Paint	Imported Marble	Hard wood door frame with European style Flush Panel	Anodised Aluminium	Painted OBD	
Bedrooms	Acrylic Emulsion	Wooden Flooring	Hardwood door frame with European style Flush panel	Anodised Aluminium	Painted OBD	
Kitchen	2'high Ceramic tiles above counter	Ceramic-Tiles	Hardwood door frame with European style Flush panel	Anodised Aluminium	Cement Plaster with paint	Granite counters with SS Sink double bowl and CP fittings
Toilets	Ceramic-Tiles up to ceiling	Ceramic-Tiles	Hardwood door frame with European style Flush panel	Anodised Aluminium	Cement Plaster with paint	Granite/Marble counters, coloured sanitary fixtures & C.P. Fittings. Provision for hot & cold water supply system
Servant/Utility Room	Painted OBD	Ceramic-Tiles	Hardwood door frame with European style Flush panel	Anodised Aluminium		Painted OBD
Balconies		Anti-Skid Ceramic Tiles			Permanent Paint Finish	
External Facade	Permanent Texture/Paint Finishes					

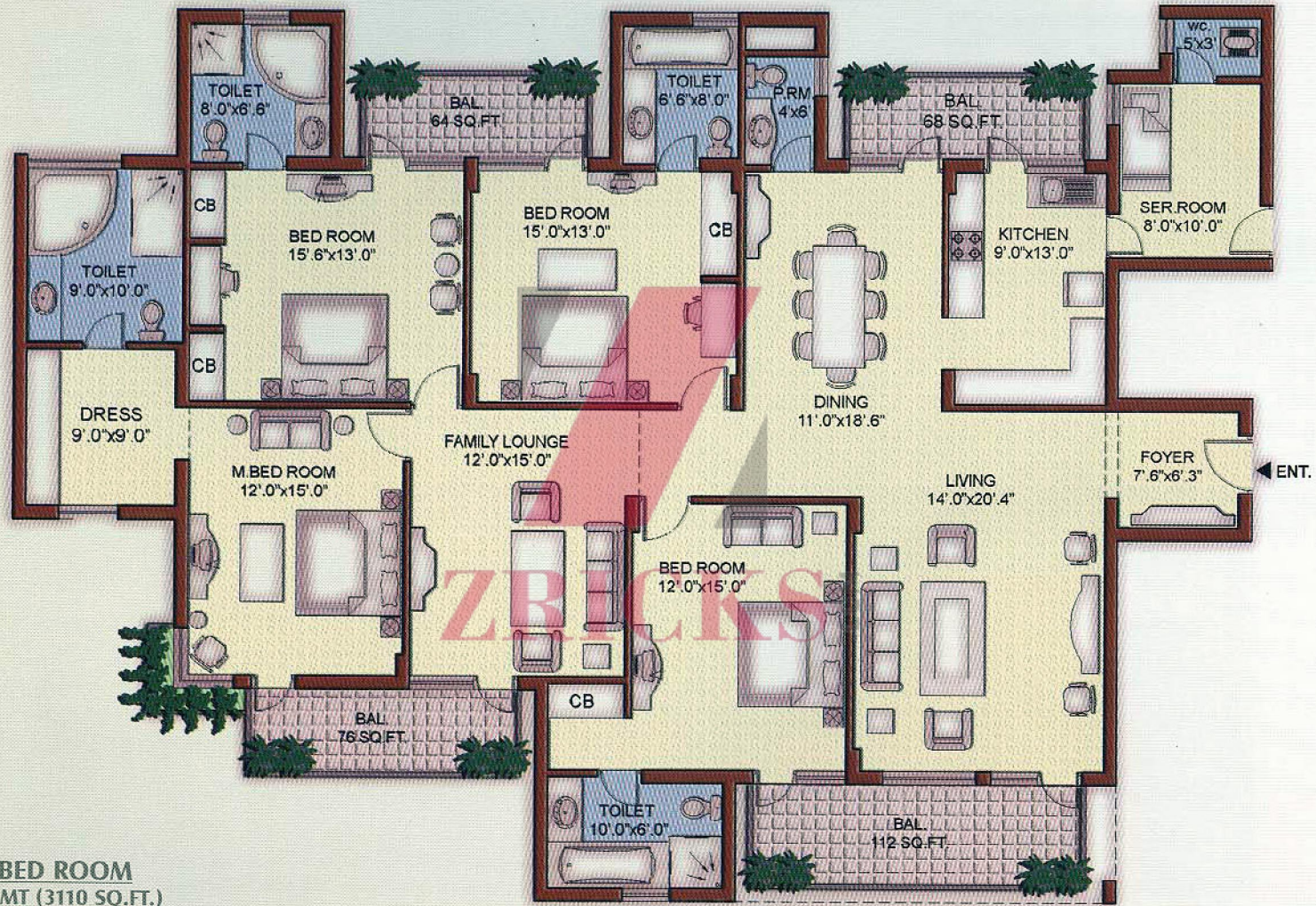
3-Bedroom Apartment



THREE BED ROOM
227.61 SQ.MT (2450 SQ.FT.)

BUILDING NOS.	UNIT NOS.	UNIT NOS.
7	01-1701	102-1702
8	01-1701	102-1702
9	01-1701	102-1702
10	01-1701	102-1702

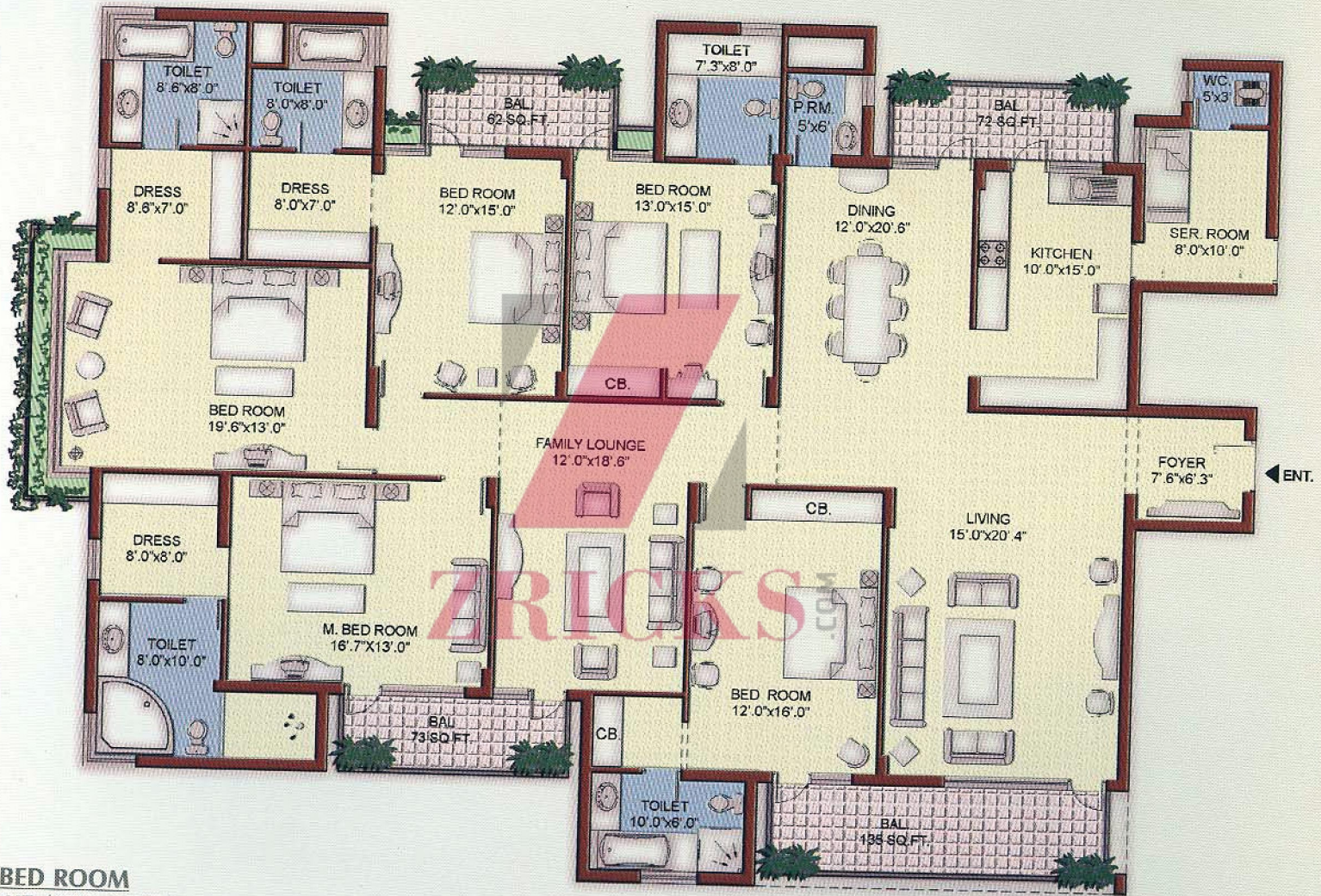
4-Bedroom Apartment



FOUR BED ROOM
288.92 SQ.MT (3110 SQ.FT.)

BUILDING NOS.	UNIT NOS.	UNIT NOS.
3	01-1201	102-1202
4	01-1201	102-1202
5	01-1201	102-1202
6	01-1201	102-1202

5-Bedroom Apartment



FIVE BED ROOM

364.64 SQ.MT. (3925 SQ.FT.)

BUILDING NOS.	UNIT NOS.	UNIT NOS.
1	101-1201	102-1202
2	101-1201	102-1202

LAYOUT PLAN



Vipul Belmonte Golf Course Road siteplan

