



Omaxe Executive Floors  
Sushant Lok-II, Gurgaon

 **OMAXE**  
*Where time is essence*



The Quality conscious have chosen us...



**ZRICKS** COM ...How about you ?

Over the years we have come to be known in the field of construction for Quality, Safety and Speed. Small wonder then that those for whom we have worked, give us repeat orders. The result - we have no one-time customers, only regular clients. With a strong technical expertise base and a sturdy financial standing, Omaxe is on the threshold of revolutionising the Indian construction industry into a fine art.

An ISO 9002 company, Omaxe, founded in 1987, has gained recognition from blue-chip

business houses as a premier organisation in the field of housing, institutional, commercial and industrial construction. Understanding the details as per existing and future requirements of individual clients combined with utility, aesthetics and comfort have all contributed towards achieving the top slot it is in today.

With an eye on the future, Omaxe is presently engaged in further upgrading its manpower and technology for highest quality and safety with clockwork precision and speed.





*Automotive component mfg. Plant, at Noida for Uniparts India Ltd.*



*IEC College of Engineering & Technology, at Gr. Noida for IEC Software Ltd.*



*Apollo Hospital, at Ludhiana for Satguru Partap Singh Apollo Hospital*



*Starex International School, at Manesar, Haryana*



*Mfg. Plant, at Gurgaon for Swedala Industri India Pvt. Ltd.*



*Corporate Office, at Delhi for Sunehari Exports*



*Residential complex, at Kullu (H.P.) For Malana Power Co. Ltd.*



*Refrigerator mfg. Plant, at Manesar for Norcool India Pvt. Ltd.*



*Noodles Plant on N.H. 8, Delhi- Jaipur Highway, for Indo-Nissin Foods Ltd.*



*Switch Gear mfg. Unit, at Noida for Indo Asian Switch Gear*



*Olive Apartments, at Sushant Lok- II*



*BSES Tower, at Noida for BSES Ltd.*

ZRICTIONS.COM



## ***Omaxe Executive Floors*** ***Sushant Lok phase- II***

It might sound odd but we keep making records and breaking them ! Executive Floors at Suncity are a case in point. Never before had people witnessed anything like their sample flat at Suncity, Gurgaon. Maximum utility of space, tastefully designed and a price tag that belies its expensive looks. The result—a total sellout in record breaking time. And that's not all. We are fast on our way to breaking the speed barrier by completing the project well before the stipulated time.

Now Omaxe offers Executive Floors at Sushant Lok-II. with 3 Bedrooms + Study. These Executive Floors are designed for the select few who can only be satisfied with the best in quality, utility and safety. They are also very demanding people who must have what they want in quick time. Omaxe stands out as the front-runner in this competitive field.



*Perspective view of Omaxe Executive Floors, at Sushant Lok-II*





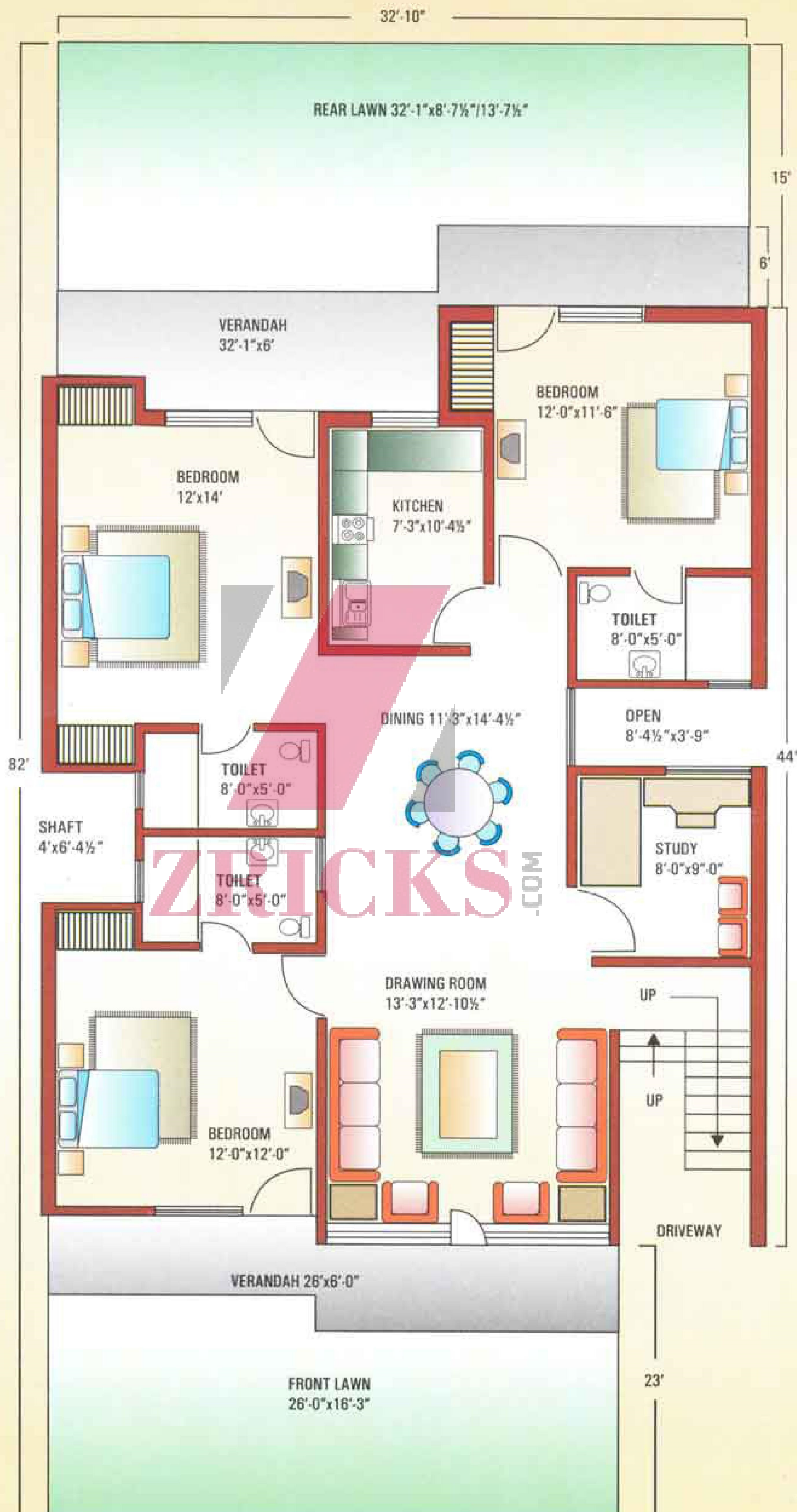
## Specifications

- Structure** : Semi load-bearing brick wall and RCC frame structure
- External Finish** : Long-lasting paint/Grit wash or equivalent
- Wall Finish** : Internal walls plastered and painted with pleasing shades of oil-bound distemper
- Toilet Walls** : Dado upto 7'-0" height of Glazed/Ceramic Tiles
- Toilet Flooring** : Glazed/Ceramic Tiles
- Fittings** : Wash Basin, EWC, Towel Rail, Hot and Cold Water System Provision for Geyser
- Kitchen** : Pre-polished Granite Platform with stainless steel sink. Dado upto 2'-0" height above platform in Ceramic/Glazed Tiles
- Doors** : Door frames of good quality hard wood and flush doors with Teak ply, polish finished
- Windows** : Powder-coated Glazed Aluminium Windows / wooden windows / pressed steel windows
- Electrical** : Copper concealed wiring, provision for lights, plug points in all rooms. Telephone & TV Ariel Points in each Bed Room , Living/ Dining.
- Flooring** : Marble flooring in Drawing-Dining ,Bed Rooms ,balcony, Verandah and Staircases.





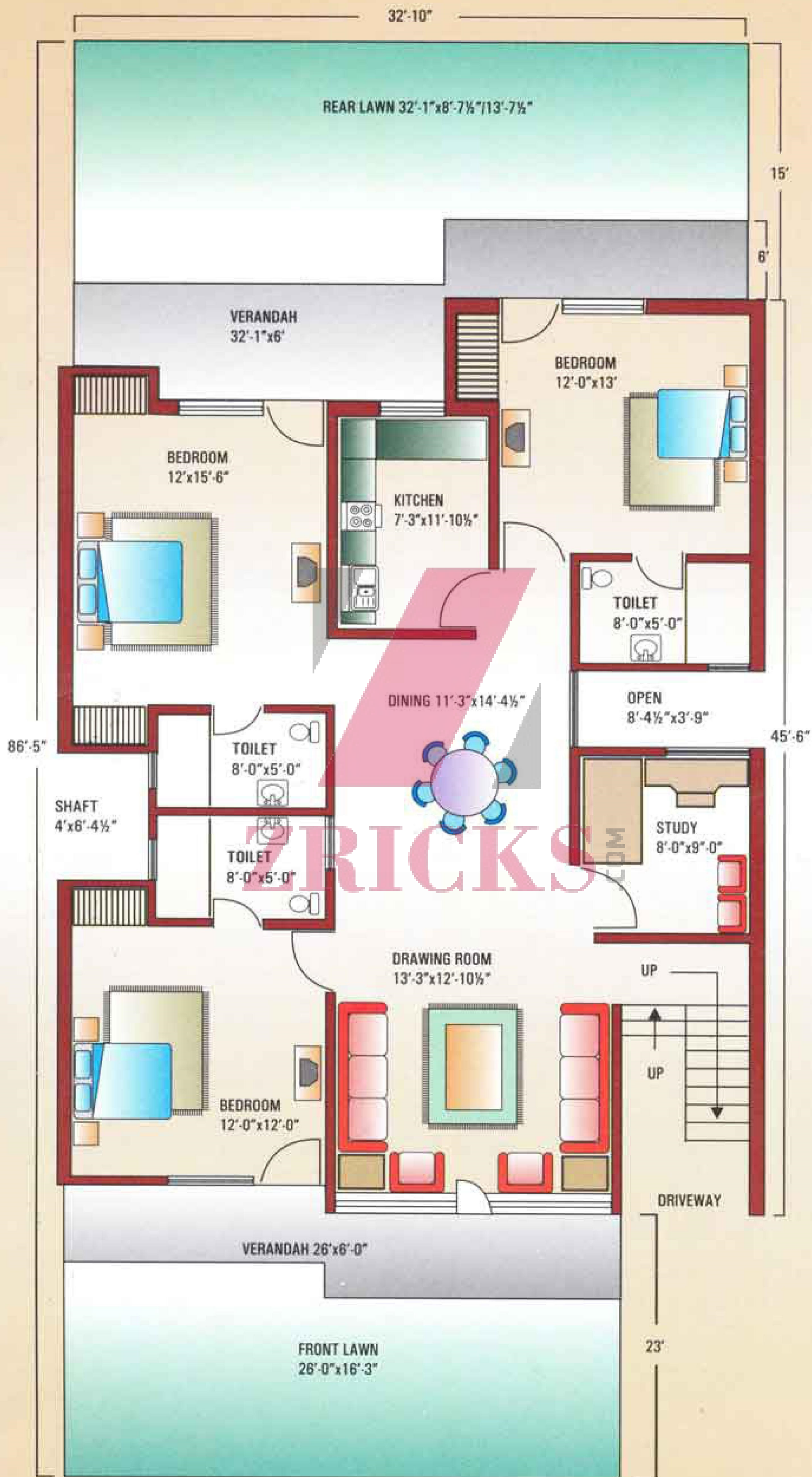
# 3 Bedrooms + Study independent executive floor plan



Independent Floor Plan on 250 Sq. Mtr. (299 Sq. Yards) Plot  
 Covd. Area per Floor = 1295 Sq. Ft. (120.35 Sq. Mtr.)  
 Area of Balconies @ 50% = 175 Sq. Ft. ( 16.26 Sq. Mtr.)  
 Total Area = 1470 Sq. Ft. (136.61 Sq. Mtr.)



## 3 Bedrooms + Study independent executive floor plan



Independent Floor Plan on 265 Sq. Mtr. (316.8 Sq. Yards) Plot  
 Covd. Area per Floor = 1345 Sq. Ft. (125 Sq. Mtr.)  
 Area of Balconies @ 50% = 175 Sq. Ft. ( 16.26 Sq. Mtr.)  
 Total Area = 1520 Sq. Ft. (141.26Sq. Mtr.)





**ZRICKS**.COM

feel the difference  
in  
quality  
by  
an ISO 9002 company