

# GLOBAL lifestyle ! LOCAL ambience !



REWIND • REFRESH • REJUVENATE





## ABOUT OMAXE MID TOWN

Omaxe presents Mid Town, the perfect venue for your business and life to take off to higher levels of excellence. Located adjacent to the 200 ft. wide Alwar-Bhiwadi Bypass, in close proximity to Delhi-Mumbai Corridor and amongst many upcoming townships, Omaxe Mid Town's location gives it a natural business advantage. It comprises retail outlets on the ground floor, Club on the first floor and the remaining floors houses Studio Apartments.

For the Residents of Mid Town it is doorstep conveniences while for the retail owners its booming business right from the word 'go'!





## PERFECT PLATFORM FOR BUSINESS SUCCESS

The Ground Floor at Omaxe Mid Town is a chain of retail outlets, offering a variety of goods and services to both the residents of Mid Town and Panorama City, as well as residents of the adjoining area. The spacious outlets are complemented by a host of world class facilities, including wide entrance, spacious lobby & sitting area, a well lit reception area and help desk, visitor friendly signages and power back-up. The retail outlets have been so designed as to be easily accessible from the entry points. Besides the facilities, the ambience, the lighting, and the decor all add to the magic of the shopping experience. For the retail owners it is booming business with captive audience waiting to step into your store!

# RETAIL





## REFRESH & RECHARGE WHILE LIVING IT UP AT THE TOP!

At Omaxe Mid Town the first floor has a dedicated club for the residents. The club is replete with spa, gym, restaurant, a lounge bar and a 24-hrs. coffee shop. The club with dedicated wi-fi connectivity has been designed with easy noticeability and accessibility from the entry points, as well as the floors.

## CLUB

Common Play Room | Snooker Room | Restaurants | Ladies / Gents Spa





## LIVE IT UP IN THE LAP OF LEISURETAINMENT!

Set amidst landscaped outdoors, and ample parking space. Omaxe Mid Town is planned to have a chain of retail stores on the ground floor while the first floor is ear marked for club, providing complete leisuretainment to its residents housed in the Studio Apartments above.

So now, hop down to splurge into a shopping spree, meet-up with friends at the club or refresh yourself at the club spa!

Omaxe Mid Town is destined to be a happening place!

## STUDIO APARTMENT





Actual Photograph

## OMAXE PANORAMA CITY

Just 5 KM from NH-8, Delhi-Jaipur Highway on Dharuhera-Sohna Road, Bhiwadi. Well known as an the Industrial Town and the opulent villas at Omaxe Panorama City has brought in world-class living within this small town! Spacious modern and budget friendly homes at Omaxe Panorama City have further enhanced the image of Bhiwadi.



Actual Photograph



Actual Photograph

## BHIWADI

Situated in the Alwar district of Rajasthan, Bhiwadi has been able to establish itself among the fastest growing cities of India. From being a flourishing industrial town, it is fast becoming a preferred heaven for real estate developers. What makes Bhiwadi a compelling proposition is its close proximity with Delhi, which in turn, has earned it the sobriquet or a 'Regional Center' or Priority Town of the National Capital Region (NCR). The city in the making is already a preferred residential suburb for MNC's and industrial complexes in Manesar and Dharuhera. On its part the Rajasthan Housing Board has contributed immensely by creating the necessary infrastructure by way of schools, hospitals, banks, transportation, water supply and telecommunications networks.

Bhiwadi, located next to Gurgaon & Manesar, has a close proximity to the Northern and Western markets of India. It is emerging as a prime choice for limitless business opportunities. Bhiwadi is a well planned industrial township of Rajasthan and is about to witness a new world-class mall.

### INIMITABLE FEATURES

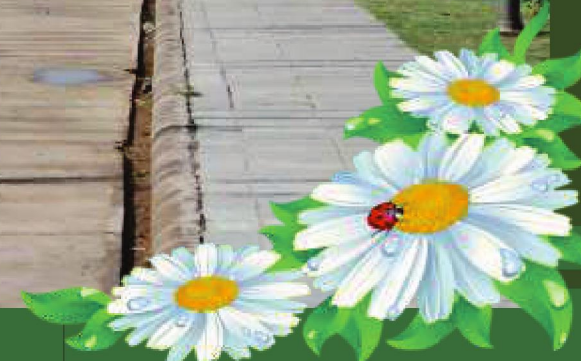
- Industrially progressive location
- Retail, Club and Studio Apartment

### EXTERNAL FEATURES

- Part of Omaxe Panorama City
- Possession offered for Villas, Plots and Flats
- More than 70 families are happily living
- Reserved parking space for residents

### EXCELLENT CONNECTIVITY

- 90 KM from Alwar
- 40 KM from Gurgaon
- 60 KM from Fridabad





# SPECIFICATIONS

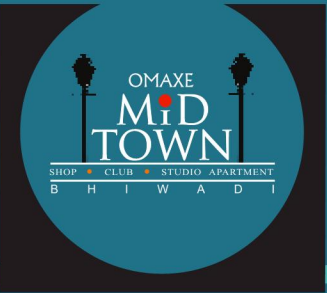
## STUDIO APARTMENTS BHIWADI



Structure	:	RCC frame structure.
External finish	:	Long lasting paint or equivalent Finish.
Wall finish	:	Internal wall plastered and painted with pleasing shades of OBD.
Toilet walls	:	Dado up to 7'-0" height of Glazed Ceramic Tiles.
Toilet flooring	:	Antiskid Ceramic Tiles.
Kitchenette	:	Pre-polished Granite top platform with stainless steel sink. Dado up to 2'- 0" height above platform in ceramic glazed tiles.
Windows	:	Aluminum windows.
Electrical	:	Copper concealed wiring, provision for light, plug points in the entire flat.
Flooring	:	Vitrified tile flooring in bedroom and common area.
Staircase	:	Stone & marble.
Doors	:	Hardwood framed flush door.
	:	Wooden Almirah in bedroom.
	:	Modular kitchenette cabinet.
	:	Geyser in bathroom.
	:	Fans & decorative lights fittings in room.



# LOCATION MAP



MAP NOT TO SCALE



## LOOKING BACK WITH PRIDE MOVING AHEAD WITH CONFIDENCE

Omaxe is one of India's leading real estate development companies. Having spread its footprints in 30 cities across 9 States in India, the company has already delivered more than 166 projects and is currently executing 41 real estate projects - 17 Integrated Townships, 2 Hi-Tech Townships, 13 Group Housing projects, 7 Shopping Malls & Commercial Complexes and 2 Hotel projects.

Over the last 25 years, Omaxe has made a mark with some landmark projects and engineering marvels across India and was amongst the first to make inroads in tier II and III cities. True to its motto, "Turning Dreams into Reality", Omaxe has completed and delivered approx. 84 mn sq ft since inception -52 mn sq ft in real estate and 32 mn sq ft of construction projects which includes Amity Information Technology University, Birla Institute of Management Technology, Christian Medical College, India Institute of Technology, LG Electronics Ltd., Samsung India Electronics Ltd. and Pepsi Foods Ltd.

Today, Omaxe stands tall on the foundation of its values - values of delivering quality and excellent real estate spaces, ensuring customer satisfaction, and redefining lifestyle of people.



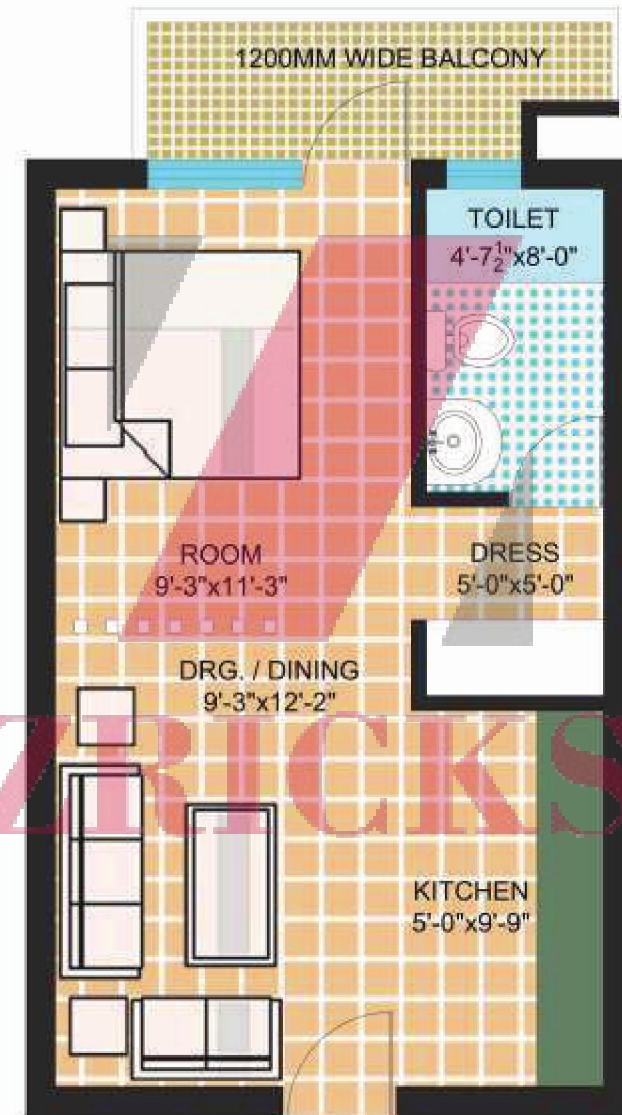
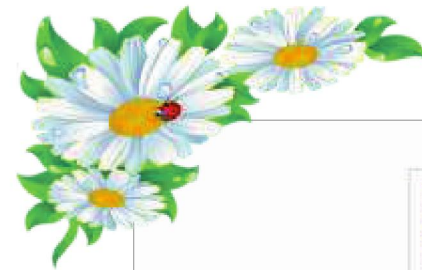












**TYPICAL UNIT PLAN**  
(AREA = 555.0 SQFT)

