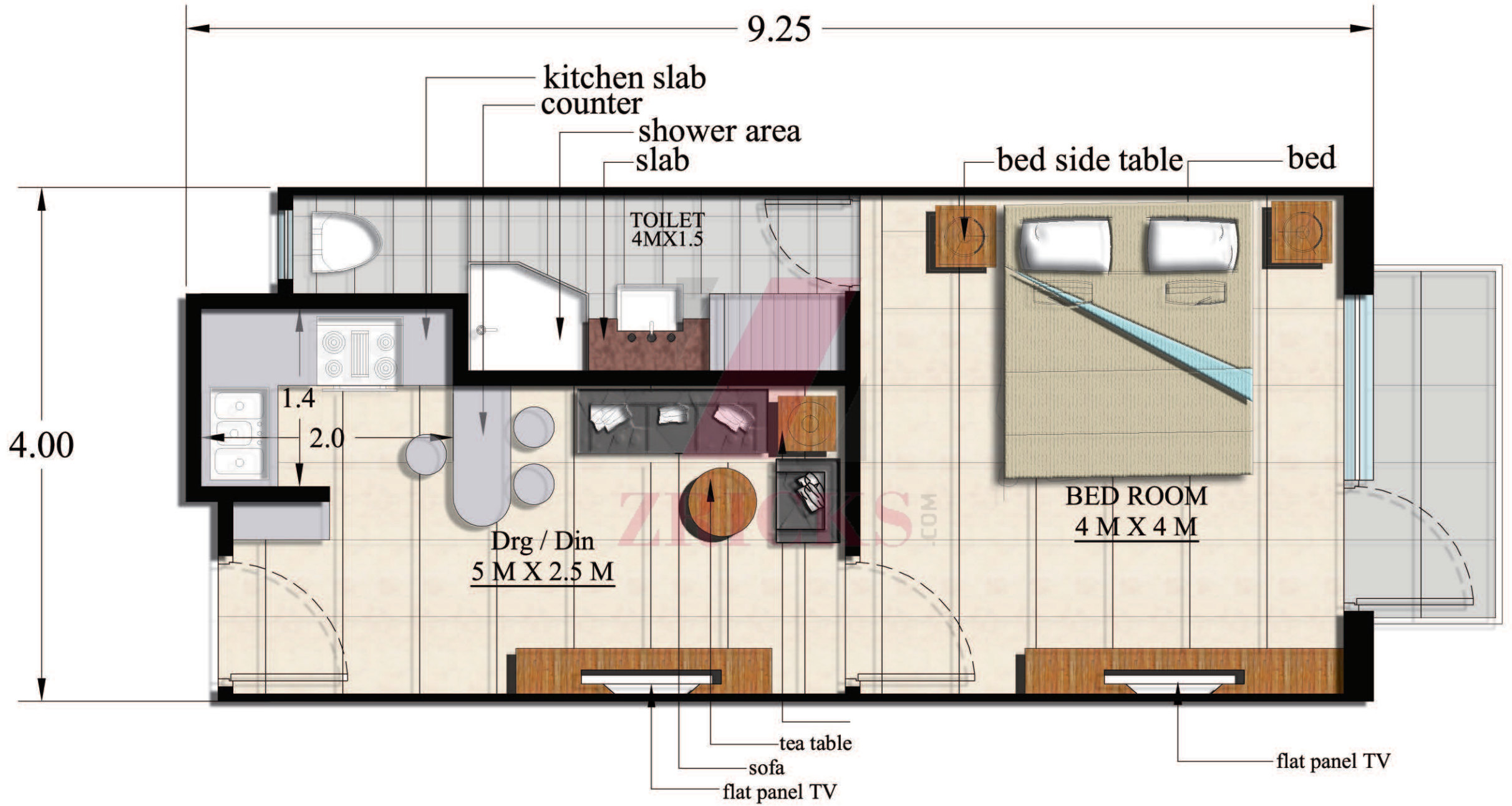


Imperial Suit

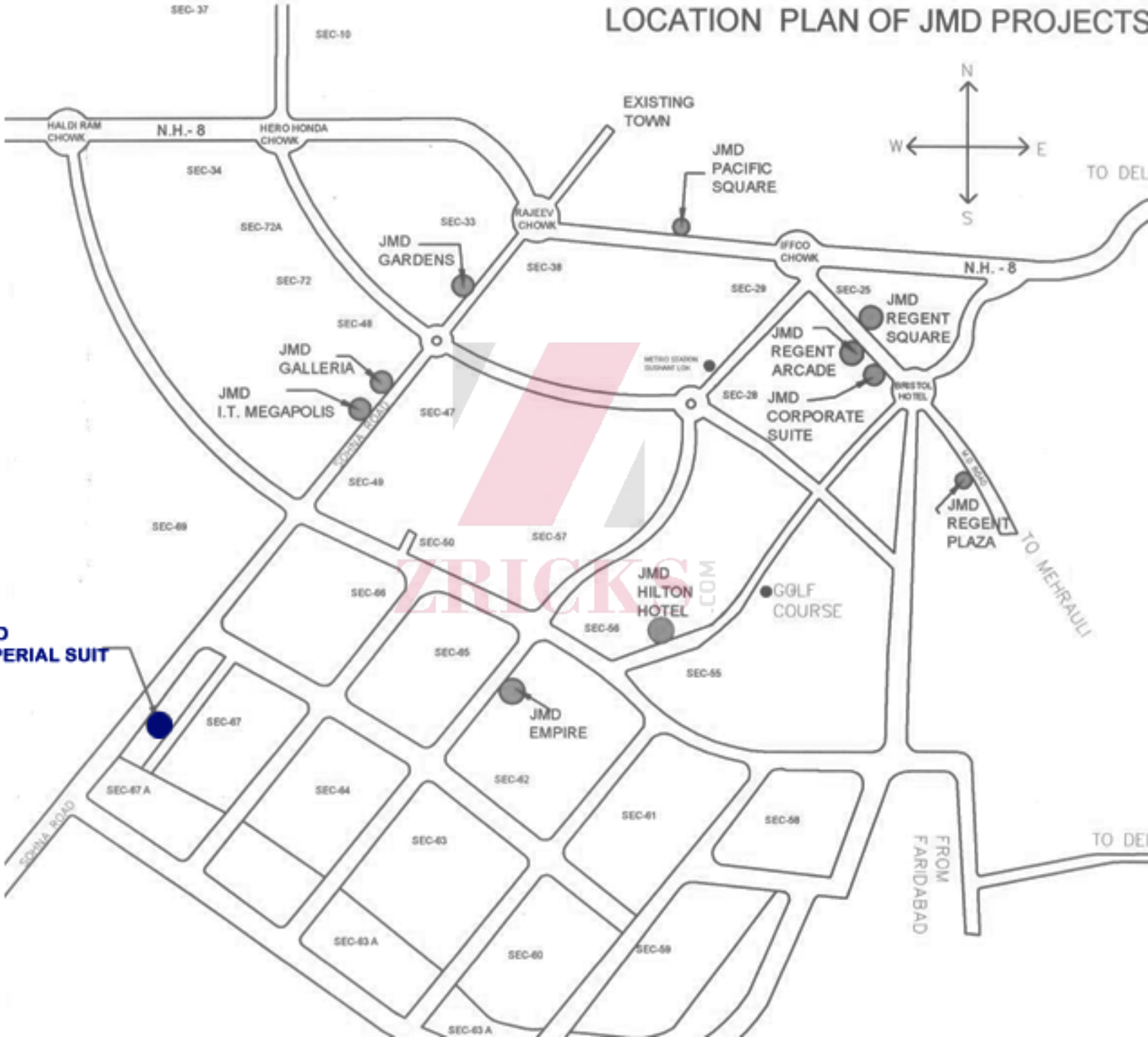
ZRICKS.COM



JMD
Defining Quality



LOCATION PLAN OF JMD PROJECTS



JMD IMPERIAL SUIT

ZIRCKS.COM





SPECIFICATION

✕ **Living Room (Including Dining & Entry Lobby):** Carpet/Tiles, gypsum plaster, plastic emulsion, Marandi Door Frame, American Veneer finished doors with melamine polish/duco, cp teak frame, main door paneled teak, melamine/duco finished, LCD TV 32", Split AC 1.5 Tr., 4 Seater Sofa, One Coffee Table, One Side Table

✕ **Master Bed Room :** Wooden Flooring, looking mirror, LCD TV 32", Split AC 1.5 Tr., Queen Size Bed, Two Side Tables.

✕ **Master Toilet:** Granite combination flooring, dado same upto 7 ft. ht., above dado plastic emulsion, frosted glass on aluminum frame, conter in imported marble, Grone/Jaguar/or equivalent.

✕ **Kitchen:** Granite Flooring, dado same up to 2 ft. ht., above dado plastic emulsion, Modular kitchen, counter and dining in granite top, Hob, Chimney, Refrigerator under counter, three dining stools/or chairs.

✕ **Exterior:** 3 coats of weather shield/weather coat over 2-3 coats of birla putty.

✕ **Lift lobby:** Granite combination, brushed steel finish lift doors, coated steel service shaft covers.

✕ **Staircase:** Kota stone tread and riser or Udaipur green.

✕ **Interiors-** Acrylic emulsion paint.

✕ **Granite in lobbies.**

✕ **Toilet fittings-** chrome/colored sanitary fixtures, single level CP fittings or as per architect.

✕ **Security-** Intercom system.

✕ **Windows-** Aluminum/ PVC frame anodized with glass.

✕ **Electrical-** All copper electrical wiring in concealed conduits

✕ **Provision for adequate lights and power points, telephone & TV outlets in all the bedrooms and living rooms, molded plastic switches with pro-active MCBs.**

ZRICKS.COM