



**IT Megapolis**







 **JMD**  
Megapolis  
Defining Quality





**JMD**  
Megapolis  
Defining Quality

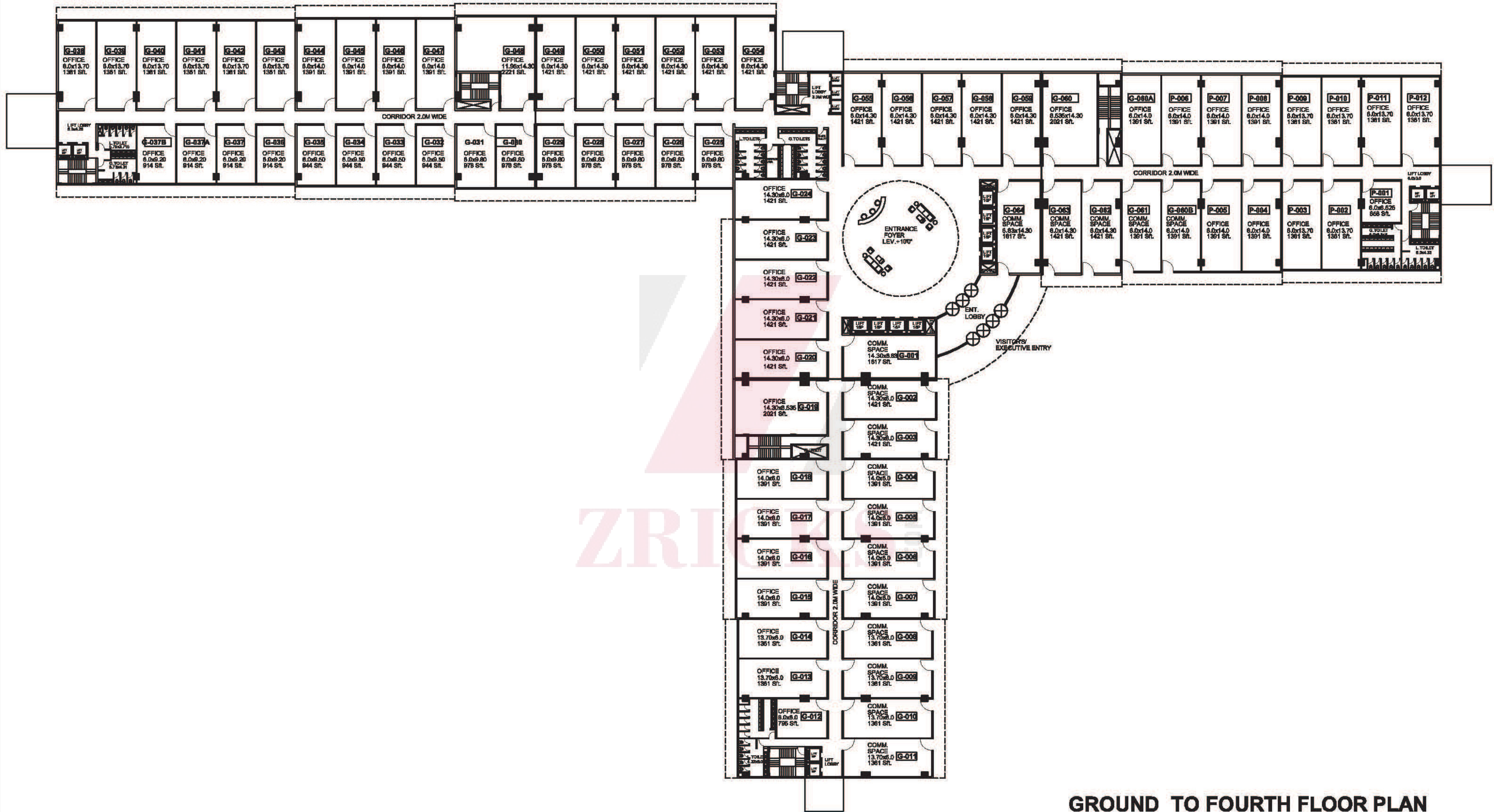












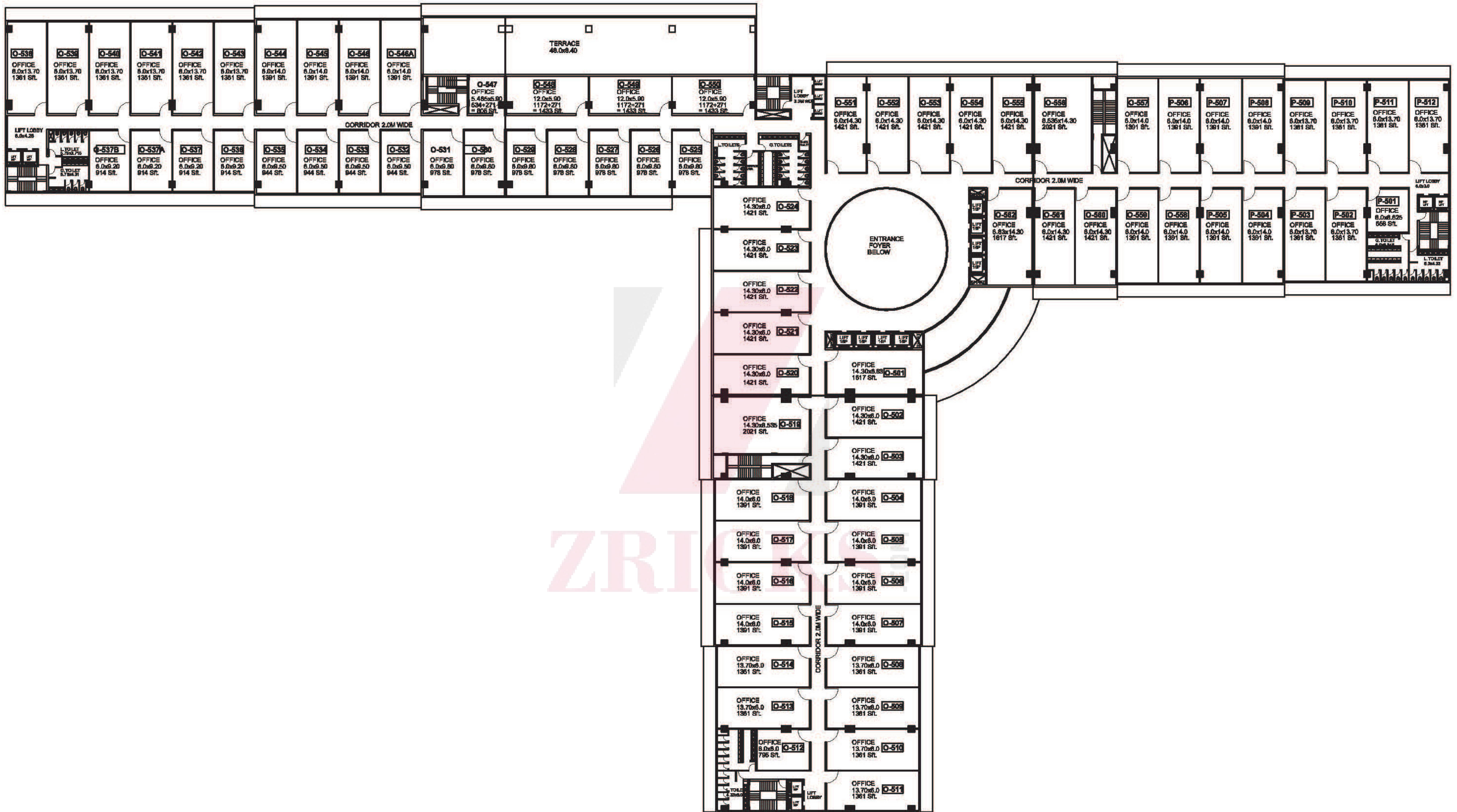
**GROUND TO FOURTH FLOOR PLAN**

PROJECT :

**"JMD MEGAPOLIS"** AT SOHNA ROAD, GURGAON

ARCHITECTS :  
**PRADEEP SHARMA**  
 ARCHITECTS PVT. LTD.  
 DEVELOPERS:





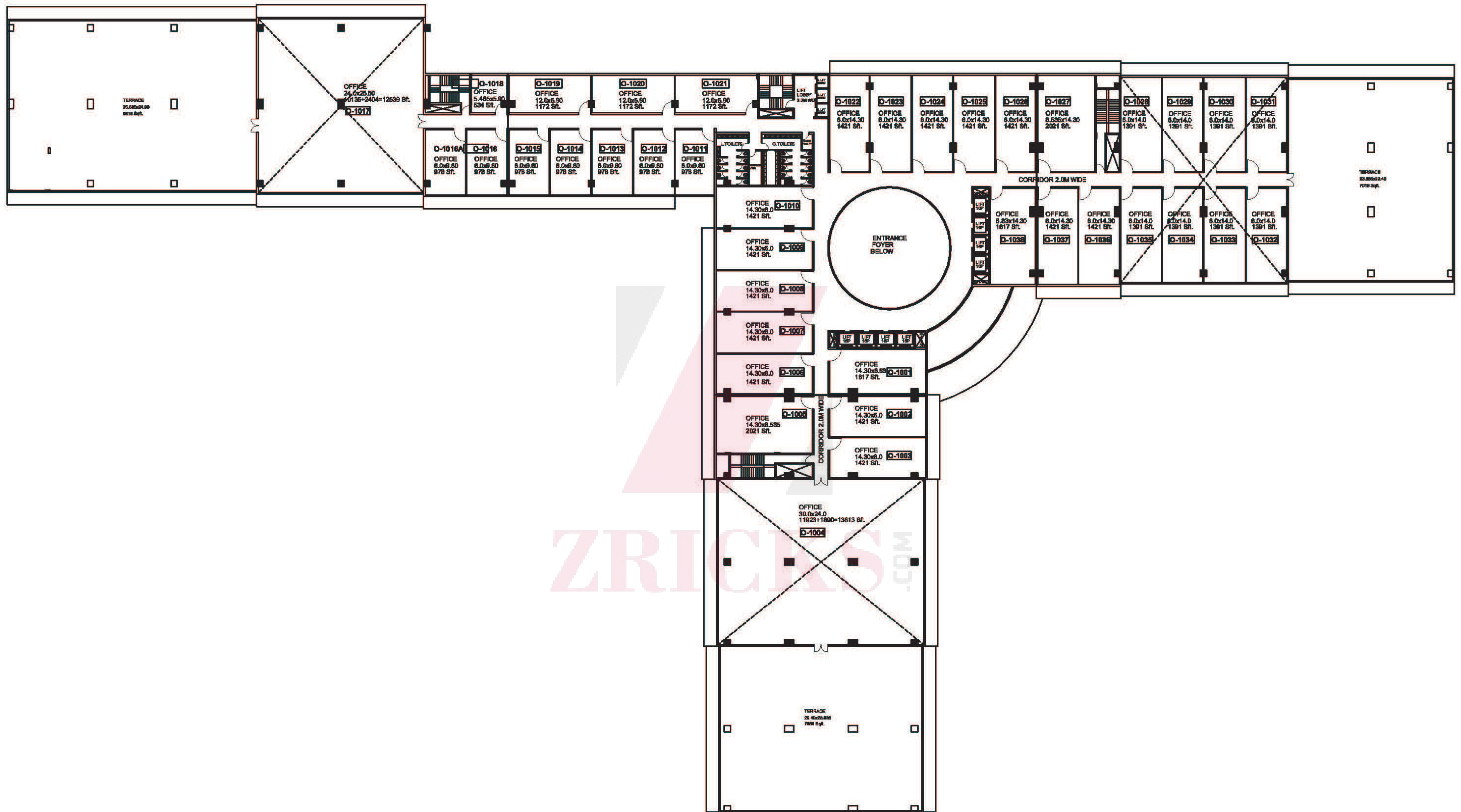
**5TH TO 9TH FLOOR PLAN**

PROJECT :

**"JMD MEGAPOLIS"** AT SOHNA ROAD, GURGAON

ARCHITECTS :  
**PRADEEP SHARMA**  
**ARCHITECTS PVT. LTD.**  
 DEVELOPERS:





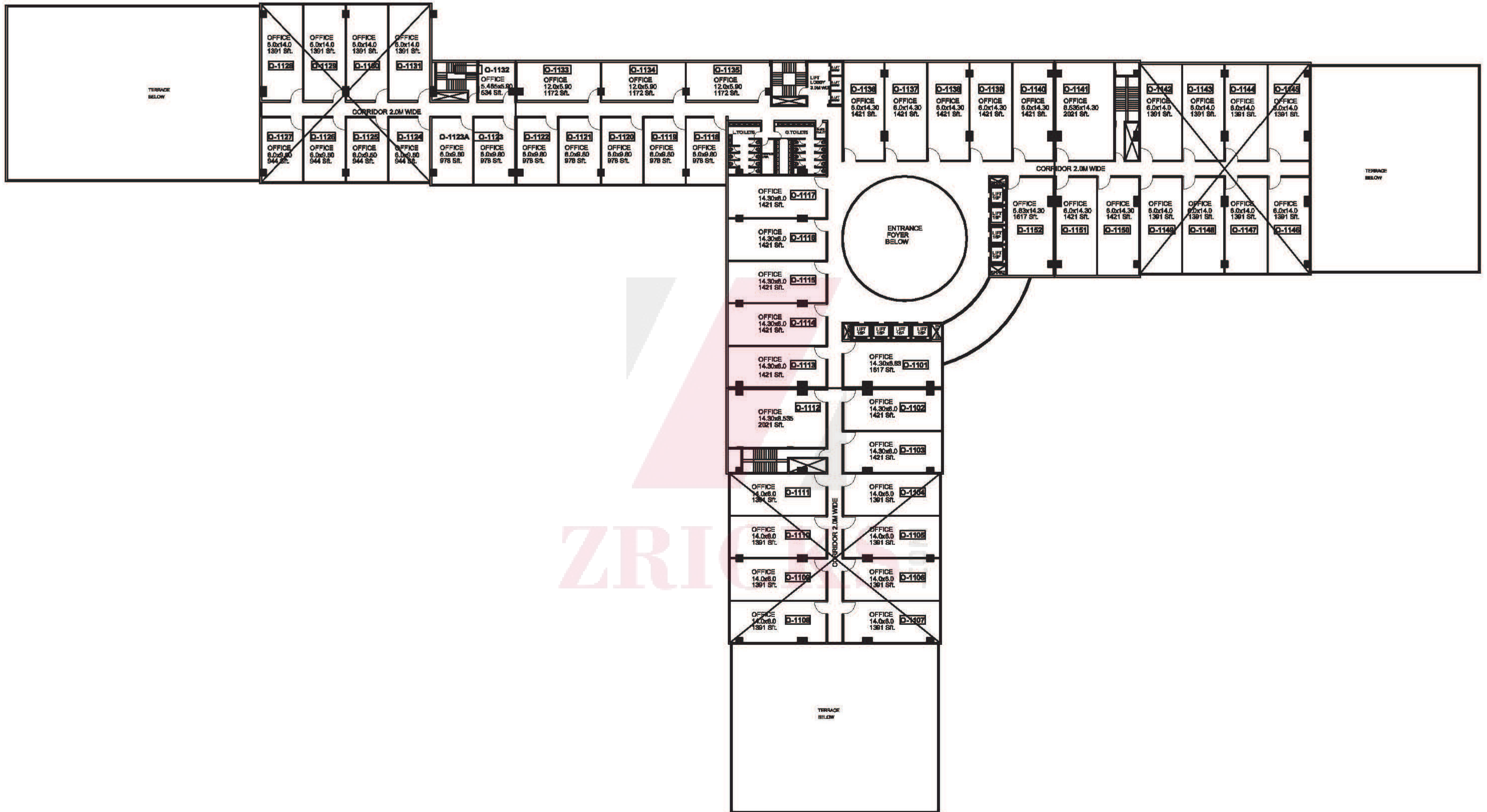
**10TH FLOOR PLAN**

PROJECT :

**"JMD MEGAPOLIS"** AT SOHNA ROAD, GURGAON

ARCHITECTS :  
**PRADEEP SHARMA**  
**ARCHITECTS PVT. LTD.**  
 DEVELOPERS:



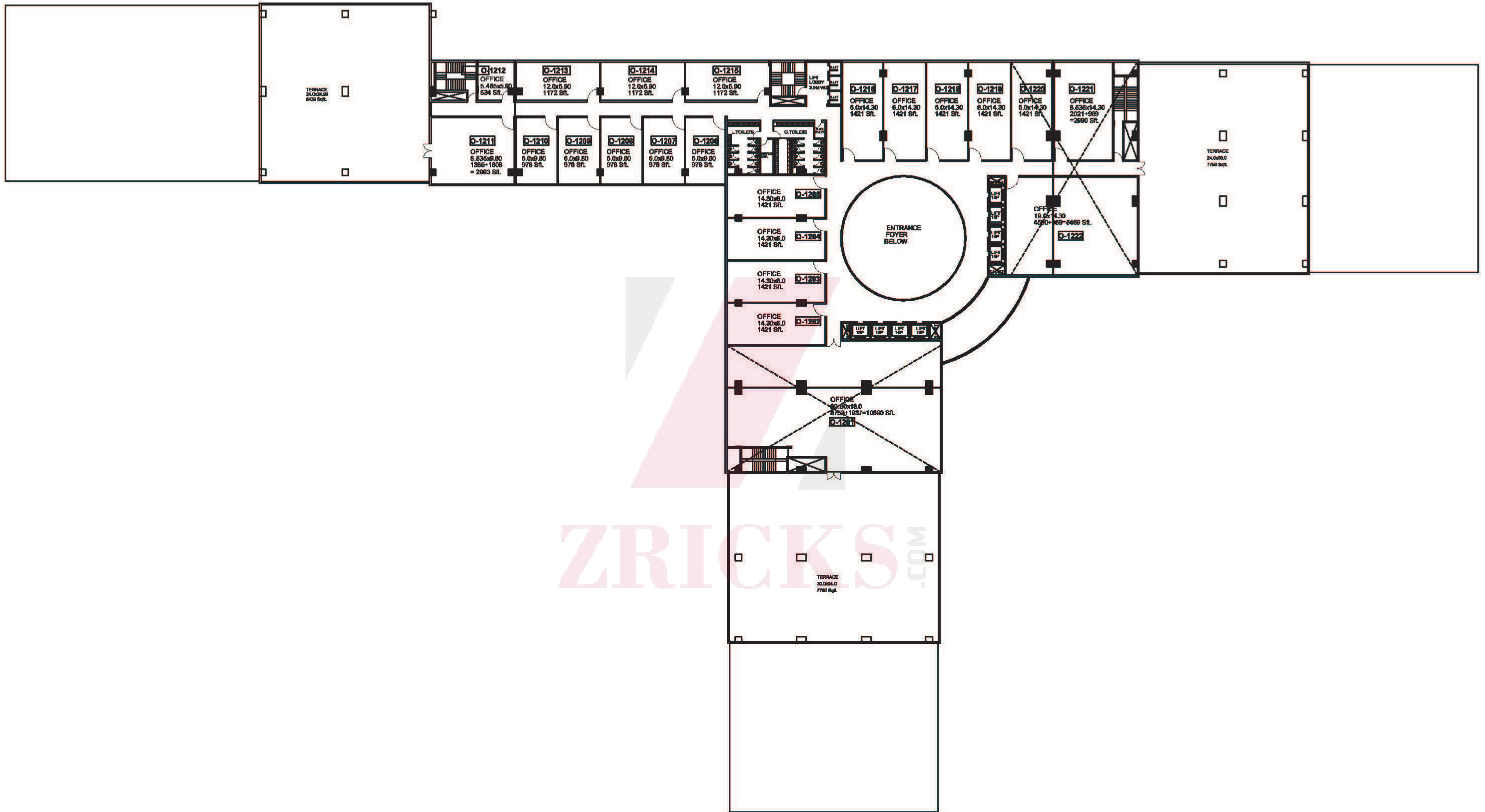


**11TH FLOOR PLAN**

PROJECT :  
**"JMD MEGAPOLIS"** AT SOHNA ROAD, GURGAON

ARCHITECTS :  
**PRADEEP SHARMA**  
**ARCHITECTS PVT. LTD.**  
 DEVELOPERS:





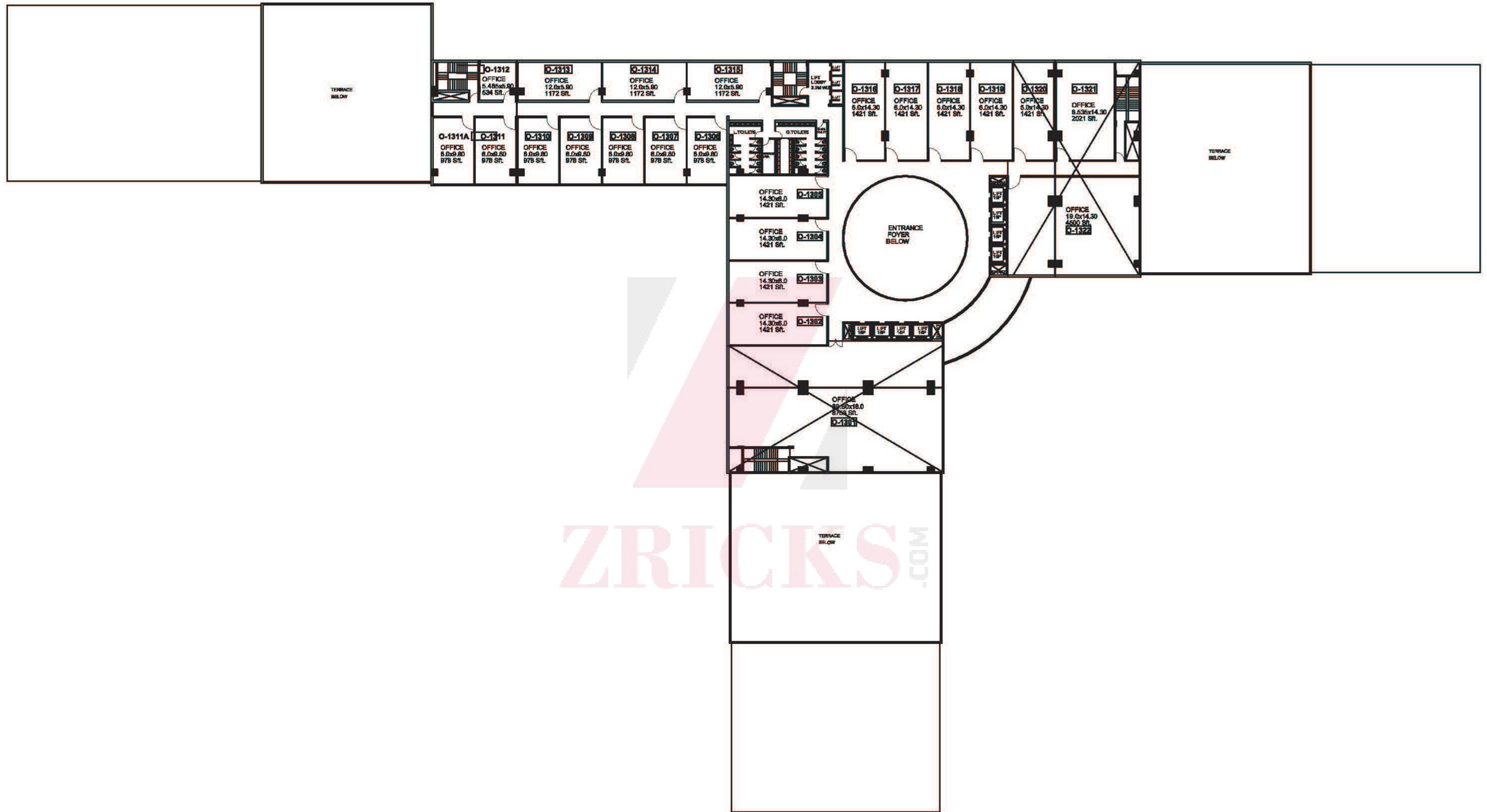
**12TH FLOOR PLAN**

PROJECT :

**"JMD MEGAPOLIS"** AT SOHNA ROAD, GURGAON

ARCHITECTS :  
**PRADEEP SHARMA**  
 ARCHITECTS PVT. LTD.  
 DEVELOPERS:





**13TH FLOOR PLAN**

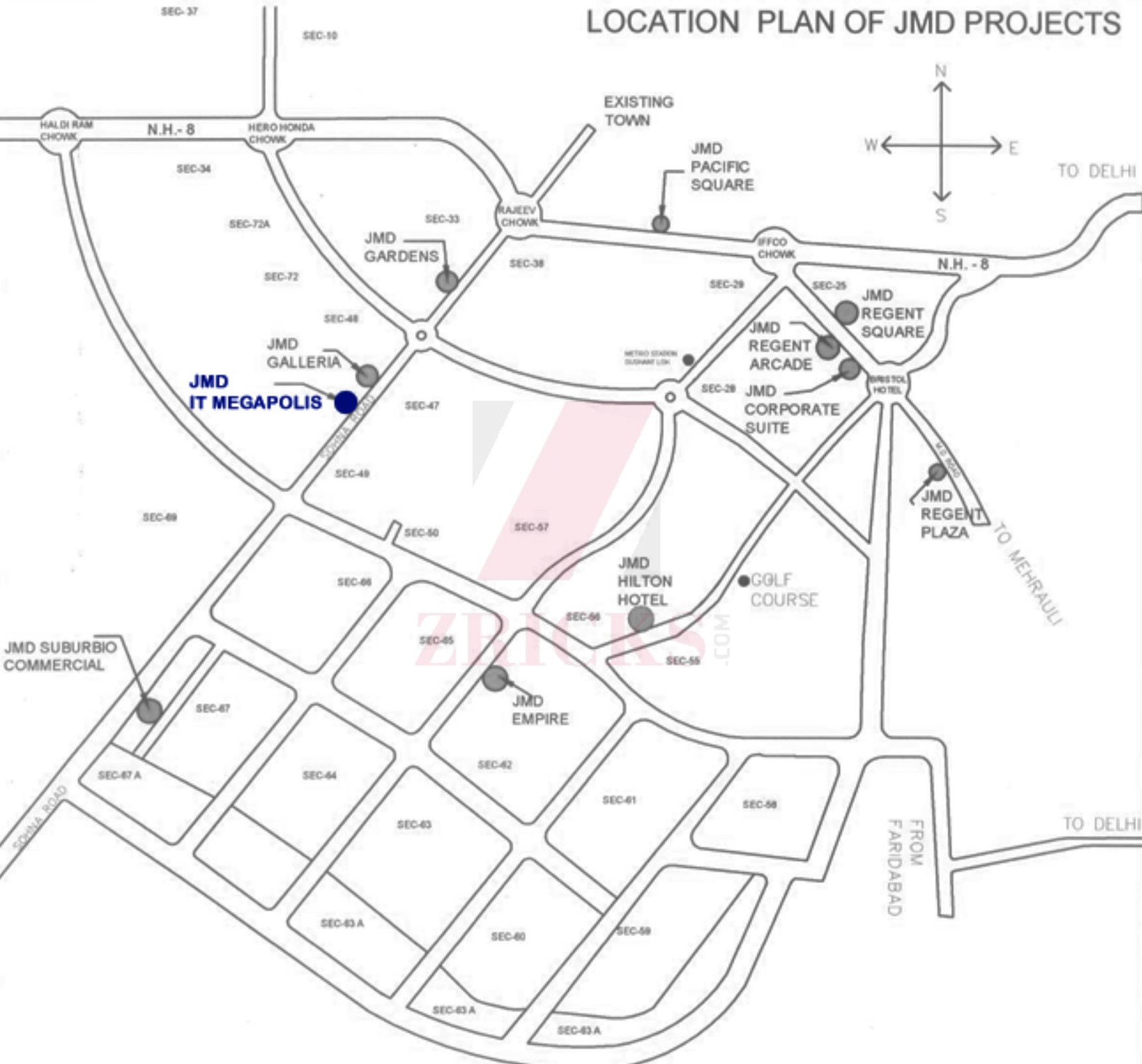
PROJECT :

**"JMD MEGAPOLIS"** AT SOHNA ROAD, GURGAON

ARCHITECTS :  
**PRADEEP SHARMA**  
 ARCHITECTS PVT. LTD.  
 DEVELOPERS:



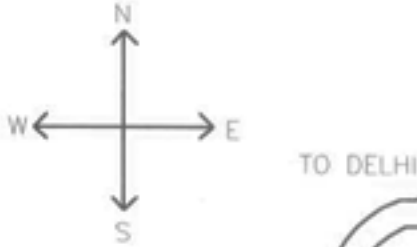
# LOCATION PLAN OF JMD PROJECTS



JMD IT MEGAPOLIS



JMD SUBURBIO COMMERCIAL



TO DELHI

TO MEHRAULI

FROM FARIDABAD

TO DELHI



# SPECIFICATION

## BUILDING DATA

Site Area : 10,025 Acres

Total Permissible Area : 9,57,091.452 sq.ft.

No. of Storeys : 13

## STRUCTURE 3 LEVEL

Foundation : Compete R.C.C foundation

Super Structure : R.C.C controlled concrete framed structure

## ARCHITECTURE

- Colorful polished granite/marble flooring.
- Polished granite/marble permanent cladding on external surfaces of Units.
- Decorative aluminium curtain wall with imported bronze grey tinted reflective tough ened glass in floors.
- Aluminium windows/glazing with clear toughened glass for Units.
- Stainless steel handrail with transparent polycarbonate sheet stair railing atrium.
- Perforated aluminium lineal false ceiling in public areas.
- Mural, water bodies, landscape in atrium.

## AIR - CONDITIONING

- Centrally air-conditioned Units/other area with year round environmental control.
- 100% electrical back up for HVAC systems.
- Basements mechanically ventilated.

## ELECTRICAL

- 100% back-up with copper wiring distribution.

## FIRE PROTECTION

- Sophisticated fire protection system comprising hydrants, sprinklers, automatic fire detection and alarm system.

## ELEVATORS

- Passengers and service elevators as per Architectural requirement.