

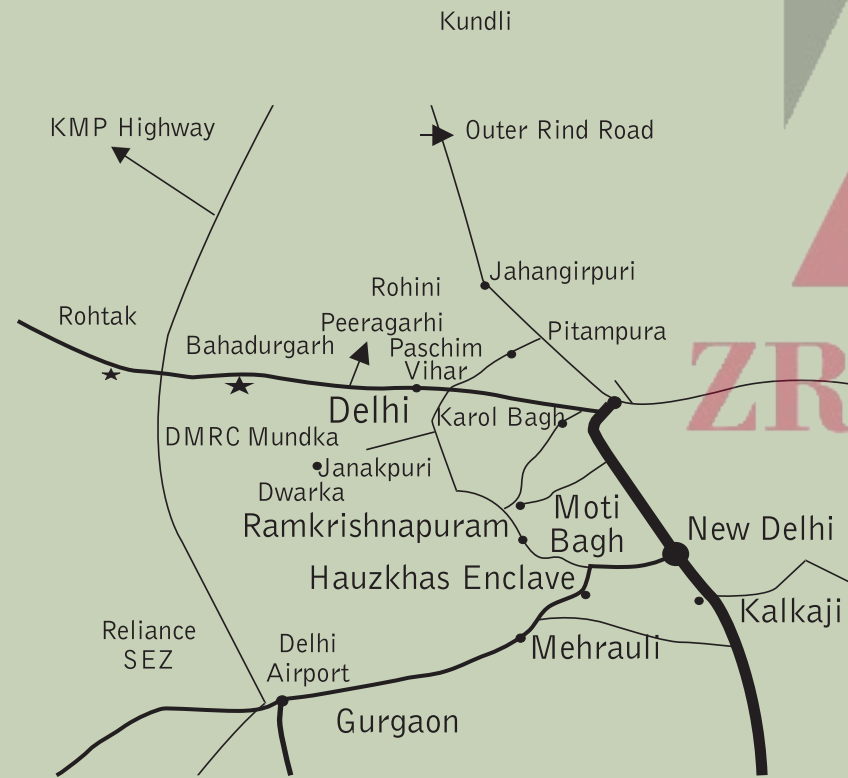
## SHUBANGAN LOCATION MAP



**शुभानगन**  
1BHK, 2BHK, 3BHK & 4 BHK Apartments  
SEC. 4A, BAHADURGARH

### Excellent Connectivity

Connaught Place	- 36 kms.
Punjabi Bag	- 25 kms.
Peeragarhi Chowk	- 21 kms.
Delhi Border	- 6 kms.
Railway Station	- 6 kms.
Delhi Hospital	- 5.5 kms.
Sainik School	- 5 kms.
DPS School	- 5 kms.
Bus Stand	- 4 kms.
Civil Hospital	- 3 kms.
DAV School	- 3 kms.
Proposed Metro Station	- 2 kms.
Gauriya Tourism	- 2 kms.



Omaxe Ltd. : 10, L.S.C., Kalkaji, New Delhi, E-mail: sales@omaxe.com Website: www.omaxe.com  
Contact : 9999999 829, 9671306 984 / 76

**OMAXE**  
Turning dreams into reality



**शुभानगन**

1BHK, 2BHK, 3BHK & 4 BHK Apartments  
SEC. 4A, BAHADURGARH

Live  
your  
Aspirations...

About

# Shubhangan

1BHK, 2BHK, 3BHK & 4 BHK Apartments  
SEC. 4A, BAHADURGARH

## Aapka Apna "Ghar Aangan"

**Shubhangan** Located within the developed Omaxe City, on a sprawling 12.53 acres, Shubhangan invites discerning home seekers to a all new world of community living at its best.

Comprising of 1/2/3 & 4 BHK apartments which been meticulously planned with intelligent space usage and abundance of natural light. The open and green spaces, pathways, flora & fauna, all cast a spell of magical living here!

In the close neighbourhood are renowned & leading Industries, Schools, Colleges, Institutes, and Hospitals.

Come, set yourself in a happening place, yet far from the madding crowd!

### Facilities & Features

Club

Schools

Parks & Lawns

Commercial



Perspective view

# Shubhangan

1BHK, 2BHK, 3BHK & 4 BHK Apartments  
SEC. 4A, BAHADURGARH



## Specification

**Structure** RCC FRAMED STRUCTURE

**External Finish** Long- lasting paint

### **DINNING & DRAWING ROOM**

Floor Vitrified Tiles  
Walls Plastered and painted with pleasing shades of OBD.  
Ceiling Plastered and painted with pleasing shades of OBD.

### **BED ROOM**

Floor Vitrified Tiles  
Walls Plastered and painted with pleasing shades of OBD.  
Ceiling Plastered and painted with pleasing shades of OBD.

### **KITCHEN**

Floor Glazed / Ceramic Tiles  
Walls Ceramic Tiles upto 2 feet height above counter and Plastered and painted with pleasing shades of OBD.  
Ceiling Plastered and painted with pleasing shades of OBD.  
Platform Pre-polished granite platform with stainless steel sink.

### **BALCONIES**

Floor Anti Skid / Ceramic Tiles  
Walls Long Lasting Exterior Paint

### **TOILETS**

Walls Dado up to 7' - 0" height of Glazed / Ceramic Tiles  
Floor Glazed / Ceramic Tiles  
Fittings/Fixtures Wash basin, EWC, Towel Rail, Provision for Hot & Cold water system.

### **DOORS & WINDOWS**

Doors Hardwoods Framed / Flush Doors  
Windows Wooden window

### **ELECTRICAL**

Wire Copper concealed in all rooms, Living/Dinning, toilets & Kitchen.  
Plug Plug point in each bedroom / Drawing / Dining, Toilets & Kitchen.

### **LIFT LOBBY**

Floor Vitrified Tiles  
Walls Plastered and painted with pleasing shades of OBD.



# इशुबहंगन

1BHK, 2BHK, 3BHK & 4 BHK Apartments  
SEC. 4A, BAHADURGARH



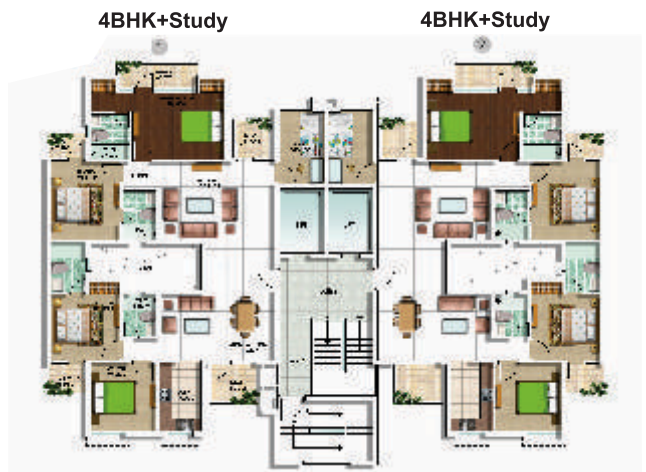
Perspective view



Perspective view

# FLOOR PLAN

Area - 2215 Sq.Ft.  
4 BHK + Study + 4 Toilet



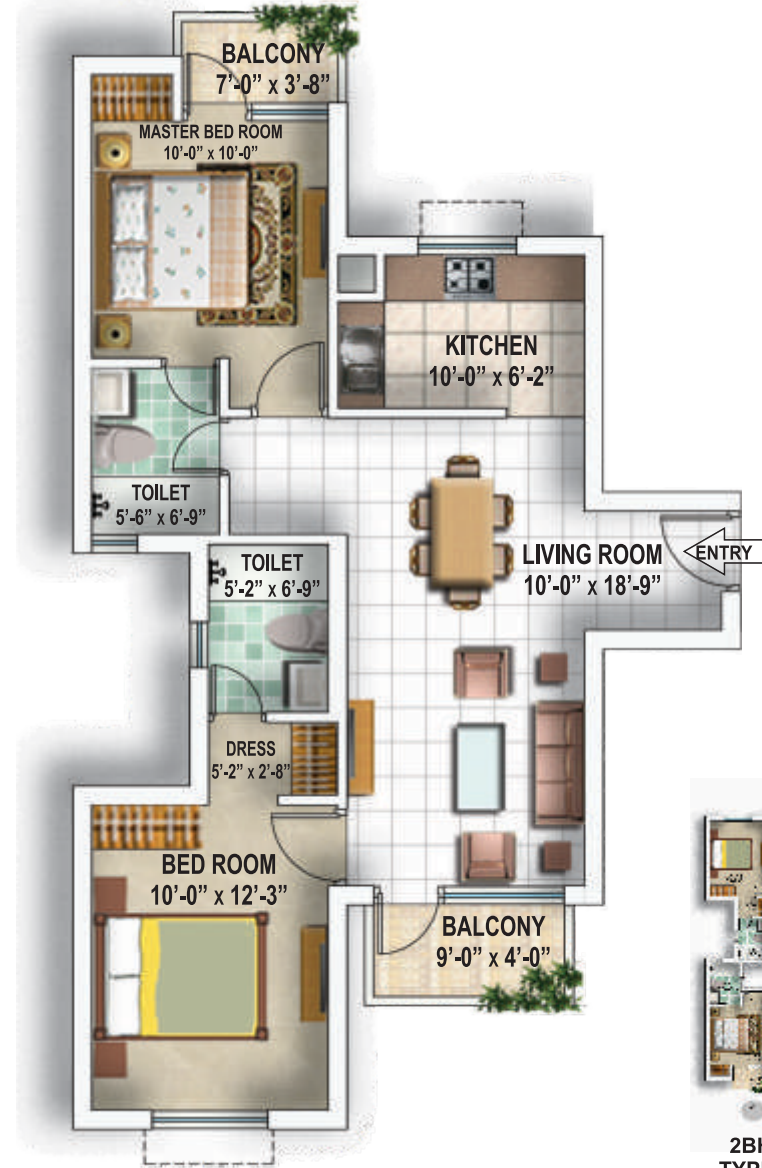
# FLOOR PLAN

Area - 1280 Sq.Ft.  
3 BHK



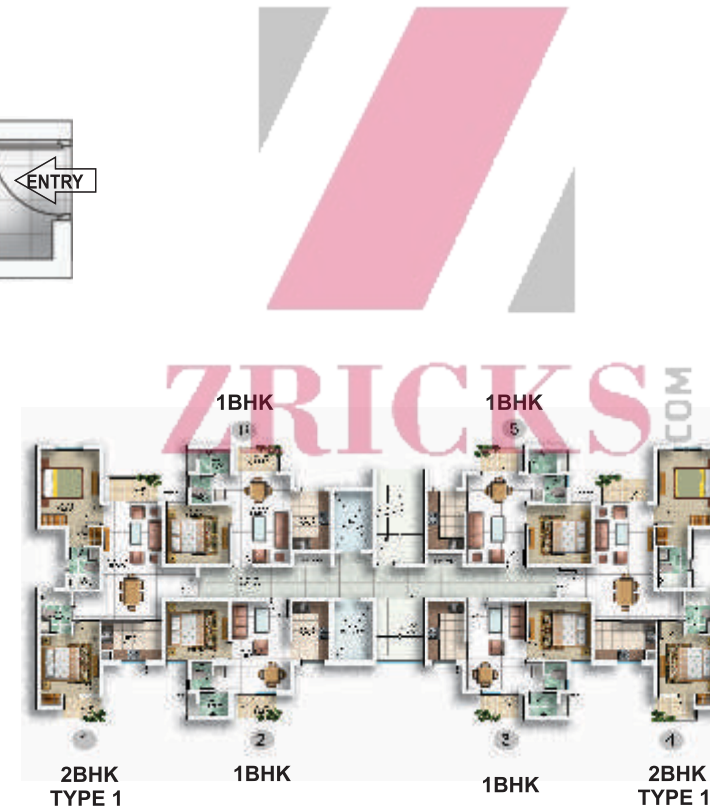
# FLOOR PLAN

Area - 1110 Sq.Ft.  
2 BHK (Type I)



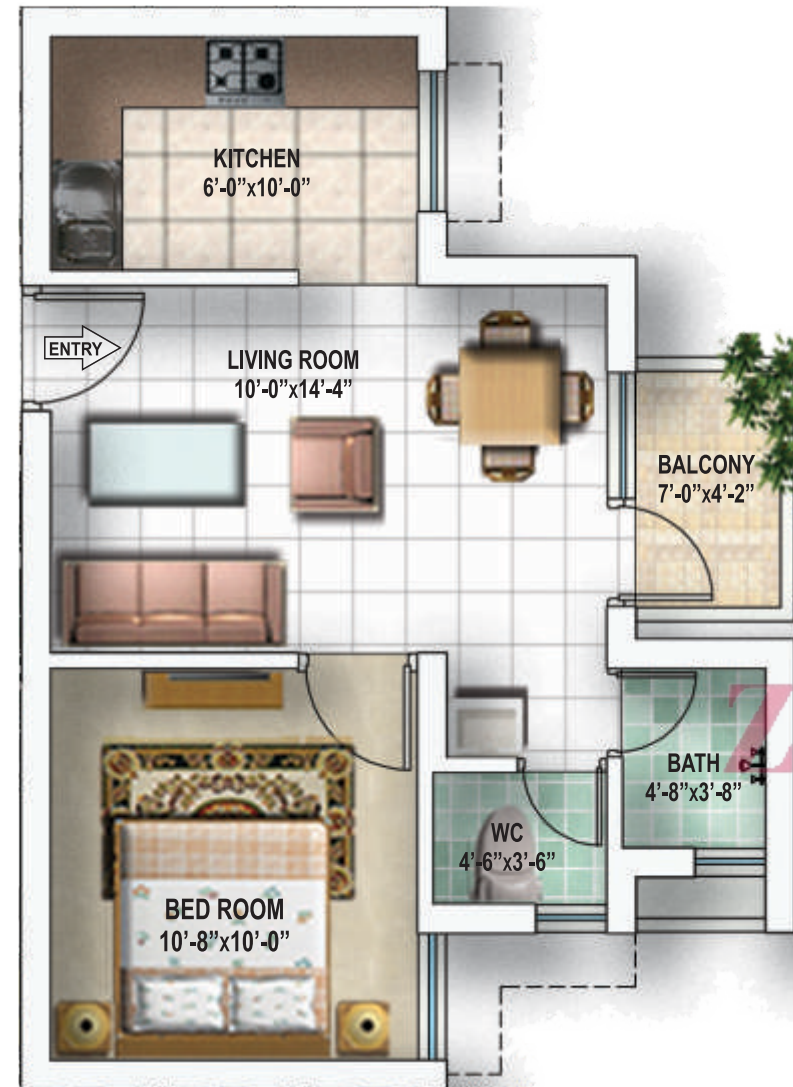
# FLOOR PLAN

Area - 930 Sq.Ft.  
2 BHK (Type II)



# FLOOR PLAN

Area - 635 Sq.Ft.  
1BHK



# Shubhangan

1BHK, 2BHK, 3BHK & 4 BHK Apartments  
SEC. 4A, BAHADURGARH

TOWER NAME	BUILDING HEIGHT	TYPE	AREA (SQFT)
T6 To T20 & T26	STILT + 9	2 BEDROOM (1 <sup>st</sup> TO 5 <sup>th</sup> FLOOR )	930
		3 BEDROOM (1 <sup>st</sup> TO 5 <sup>th</sup> FLOOR)	1280
		4 BEDROOM +Study (6 <sup>th</sup> TO 9 <sup>th</sup> FLOOR)	2215
T21 To T25	STILT + 10	2 BEDROOM (1 <sup>st</sup> TO 6 <sup>th</sup> FLOOR )	930
		3 BEDROOM (1 <sup>st</sup> TO 6 <sup>th</sup> FLOOR)	1280
		4 BEDROOM +Study (7 <sup>th</sup> TO 10 <sup>th</sup> FLOOR)	2215
T4 To T5	STILT + 9	1 BEDROOM	635
		2 BEDROOM	1110
T1	STILT +10	1 BEDROOM	635
		2 BEDROOM	1110
T2 To T3	STILT +8	1 BEDROOM	635
		2 BEDROOM	1110

