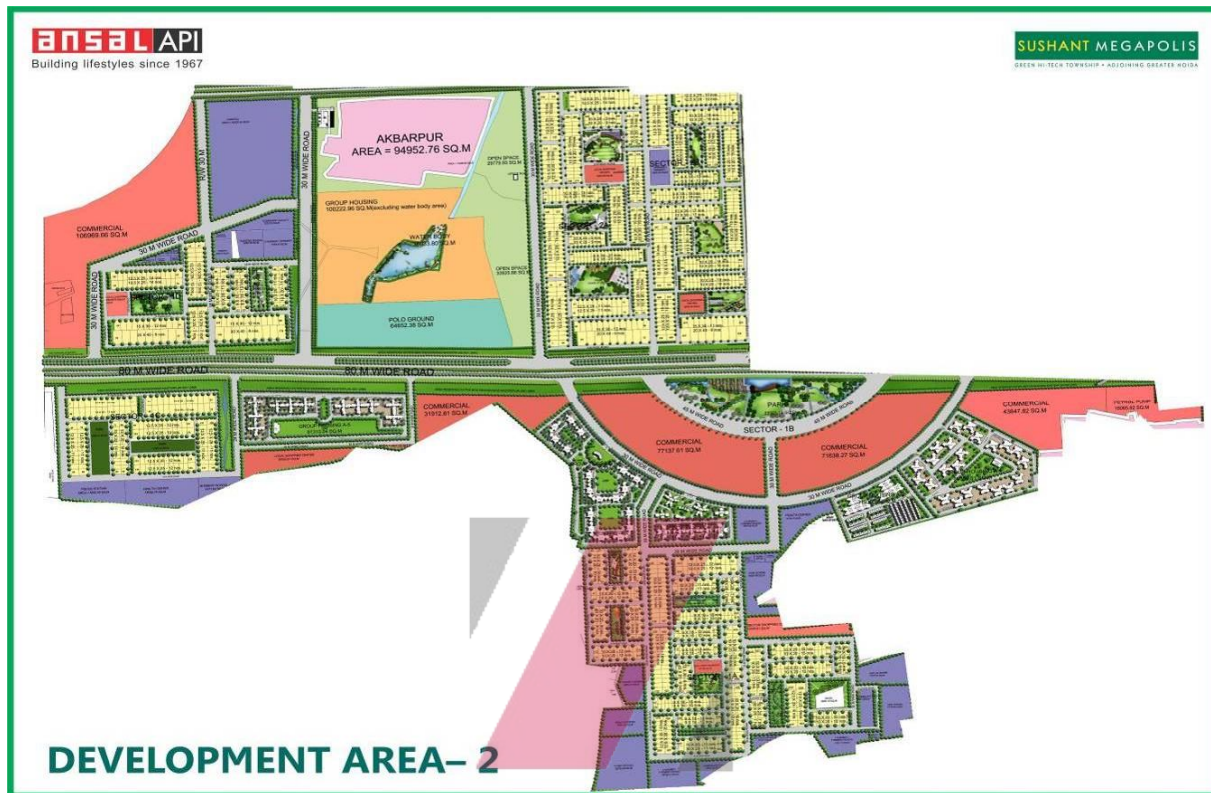


BRIEF FOR CRESCENT RESIDENCES



ANNEXURE – 1



DEVELOPMENT AREA-2

ZRICKS.COM

ANNEXURE - 2

Master Plan Sushant Megapolis



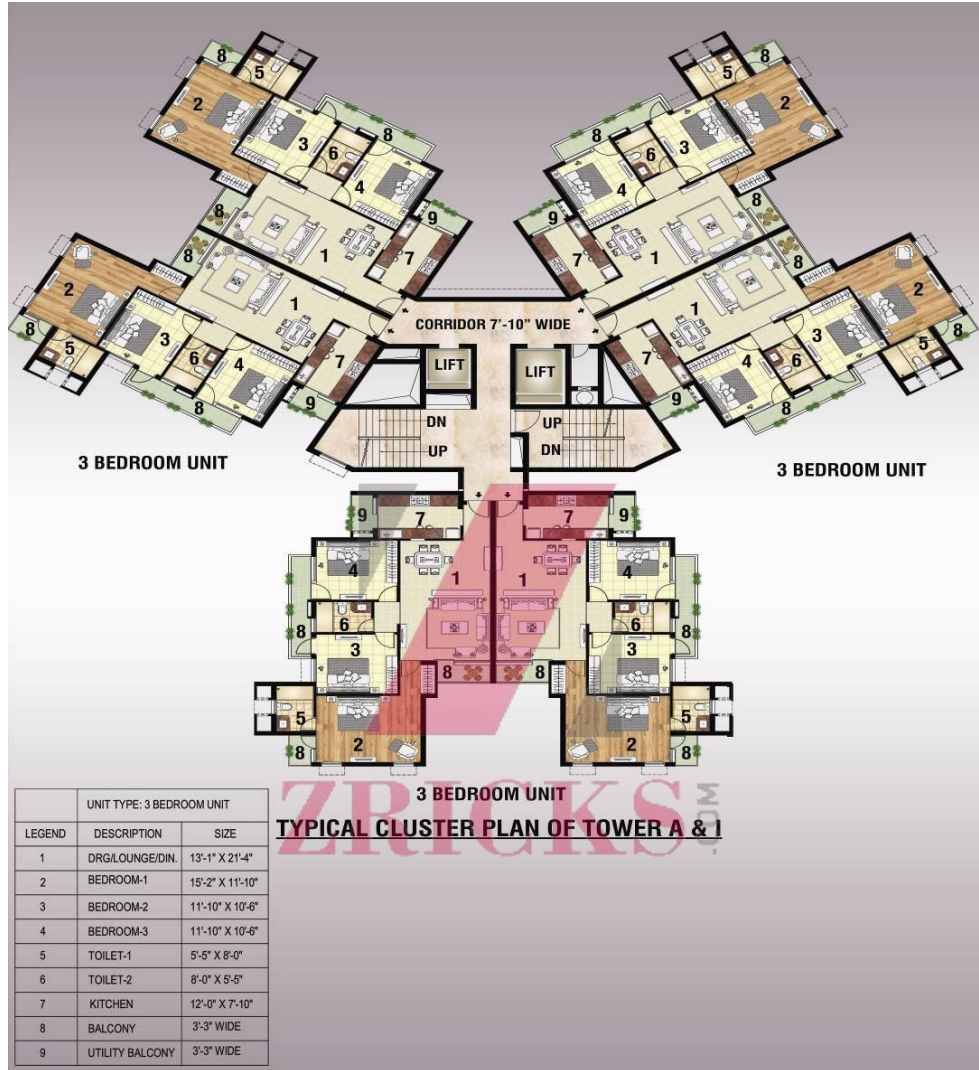
Crescent Residences Site Plan

ZRICKS.COM

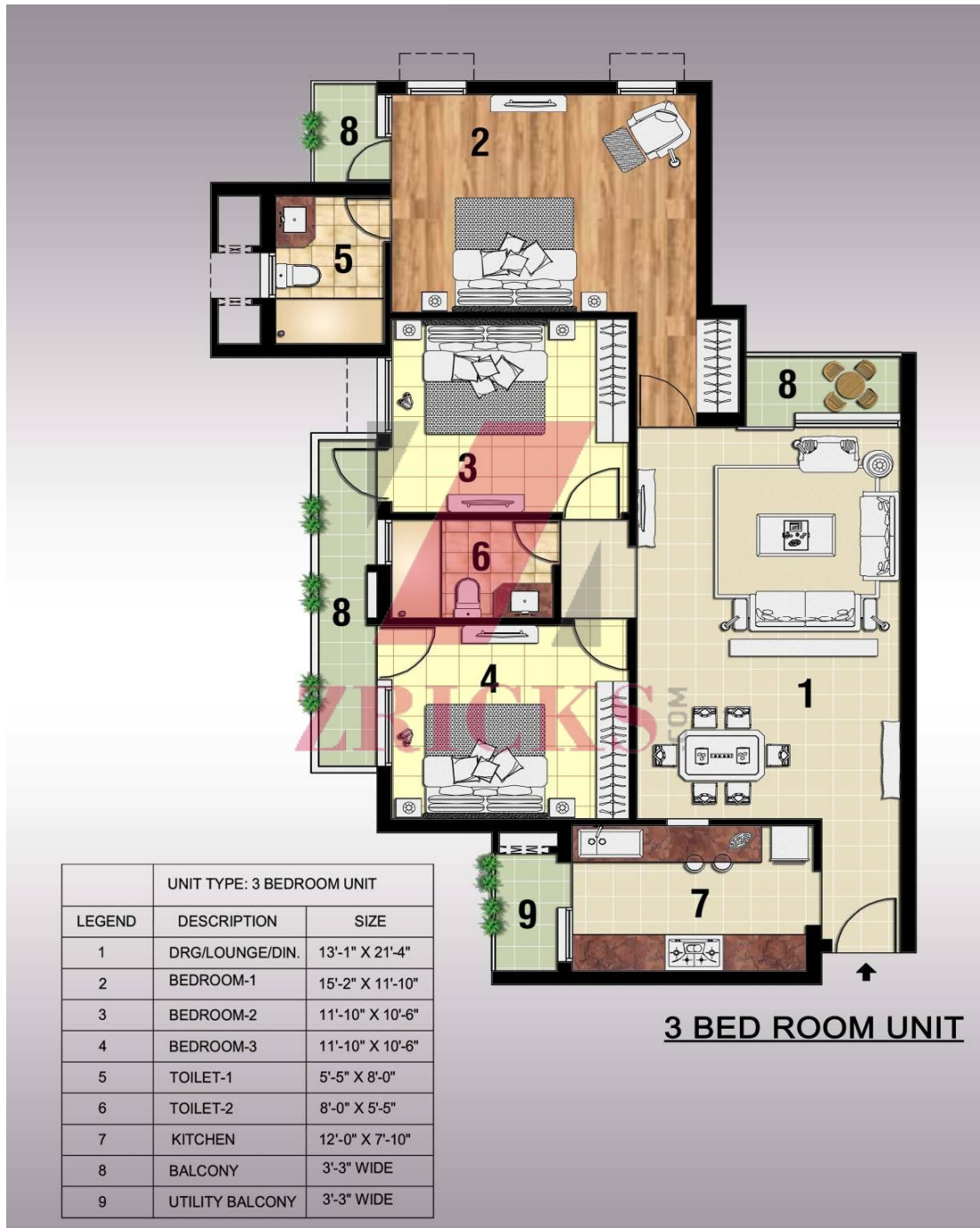


ANNEXURE - 3

Cluster Plan of Tower A & I



Unit Layout Of 3 BHK Unit





Club



Night View of Crescent Residences

Location Map

ANNEXURE - 4



ANNEXURE – 6

SPECIFICATIONS

STRUCTURE		Framed structure confirming to BIS seismic codes with brick/block masonry filler walls
Floor Finishes	Living / Dining Master Bedroom Bedroom Stairs Balconies	Vitrified Tiles Laminated Wooden Flooring Vitrified Tiles Stone flooring on treads Non – Skid Ceramic Tiles
Doors		Machine made Molded Door Shutter with Stainless steel/Brass Fittings
Windows		UPVC / Aluminium anodized with float glass
Toilets	Floor Walls Chinaware Counters Other fixtures	Non – Skid Tiles Tiles upto 7' and OBD above European type WC, wash hand basin, Jaquar or Equivalent Single lever CP fittings Granite Counters as per design Looking mirror, towel ring / rod, paper holder, soap dish and health faucet
Kitchen	Walls Floor Counter Fitting Sink Equipments Water supply R.O Piped Gas	Ceramic tile cladding on walls 2 feet above the counter OBD for balance area Ceramic tiles Granite Counter Single lever Jaquar or Equivalent CP fittings with Mixers Stainless steel Sink with drain board Gas Hob & Chimney to be provided Provision for hot and cold water supply RO System to be provided in the Kitchen Provision for Piped Gas (Only Piping as required)
Balcony		Stainless Steel with Glass façade
Finishes	Internal External	Drawing and Dining rooms / bedroom walls shall be finished with Plastic Emulsion paint as per design Pleasing elevation with semi permanent finish / all weather exterior paint
Utilities & Facilities		
Electrical Work		Copper wires in connected PVC conduits with modular switches. Provision shall be made for sufficient light and power points Decorative Lights & Fans
Telecommunications	Switches & Sockets	Telephone & TV points in all Bedroom, Drawing / Dining Room
Security		CCTV cameras at common access points, Audio Intercom facility in the apartment, Burglar Alarm & 24 Hours manned security on entrance gates.
Ventilation		Exhaust Fans provided in kitchen and bedroom. All external doors and part of external windows are openable.
Water Supply		Water Supply through underground supply lines/Overhead tanks
Sewage Water		Soiled water drainage into main sewer outside property
Storm Drainage		Storm water drainage system integrated with rainwater harvesting.
Fire Protection		Fire detection as per fire safety norms.
Services		Maintenance of common area on chargeable basis.

Disclaimer: all floors plans specifications are indicative and are subject to change as decided by the Company or by the Competent Authority in the best interest of the development. Soft furnishing, cupboard, kitchen cabinet, furniture and gadgets if shown in the layouts are not part of the offering.

Facilities & Amenities

1. Tennis Court
2. Basket ball court.
3. Volley ball court.
4. Children play Area.
5. Skating Ring.
6. Cycling and Jogging Track.
7. Driver Waiting area for complex with facilities.
8. Grand entrance with musical Fountain.

Club Facilities:

1. Heated pool inside the club.
2. Indoor Badminton Court.
3. Billiards/ Pool .
4. SPA:
 - a) Cardiovascular and strength training program.
 - b) Yoga Relaxation classes.
 - c) Fitness and body composition counseling
 - d)Sauna / Steam
 - e)Jacuzzi
 - f) Massage Room
5. Gym.
6. AV Room
7. Carrom Room.
8. Card Room
9. Table Tennis.
10. Library.
11. Barbe cue area.
12. Out Door Café.
13. Restaurant and Banquet Hall.
14. Daily Convience Shops.

