



TM

LUXURIATE IN NATURE'S EMBRACE

*The Legacy of Happiness  
Goes On*

A stylized logo consisting of a large, slanted 'Z' shape. The top-left and bottom-right corners of the 'Z' are filled with a dark green color, while the rest of the shape is a solid brown color.

When You Love

ZRICKS.COM

You want to give something that stays,

You want to express something that is remembered,

You want to share every happiness in the world,

You want to make someone feel special every moment,

You want to let the ones you love live your legacy,

**ZRICKS**  
KAAMYA GREENS IS YOUR LEGACY



# Let Your Legacy of Happiness & Love Live On

Kaamya Greens is the heritage and the virtue that keeps your touch alive. This is a symbol of your love that you share with your loved ones so that for generations your family and values prosper and see happiness shower upon your home. Kaamya Greens is your gift of happiness, prosperity and oneness to your loved ones so that they can enjoy the feeling of togetherness and the warmth of family. We have created a world for you to breathe free, celebrate every moment with your family and let your legacy live on forever.



# Your Home is Where Your Roots Are

No matter where we are, we are at peace only at our beloved homes. It gives us a feeling of belongingness, faith and trust that we are with the ones we love and who care about us. Amidst the pleasant smell of care, the strong bond of love, the cool shade of a sanctum. Kaamya Greens is not just your home, but a sacred space in this world that's the closest to your heart. It's where your roots are.





# A World Where Your Kids Grow Up To Be A Reflection of You

Kaamya Greens is your personal Earth where you plant the seeds of faith and aspirations. Your wishes take the form of life here. Your desire for a fulfilled life comes alive and gets realized. Amidst this world, your children grow up to be happy and learn to walk in your footsteps, eventually finding their own self.

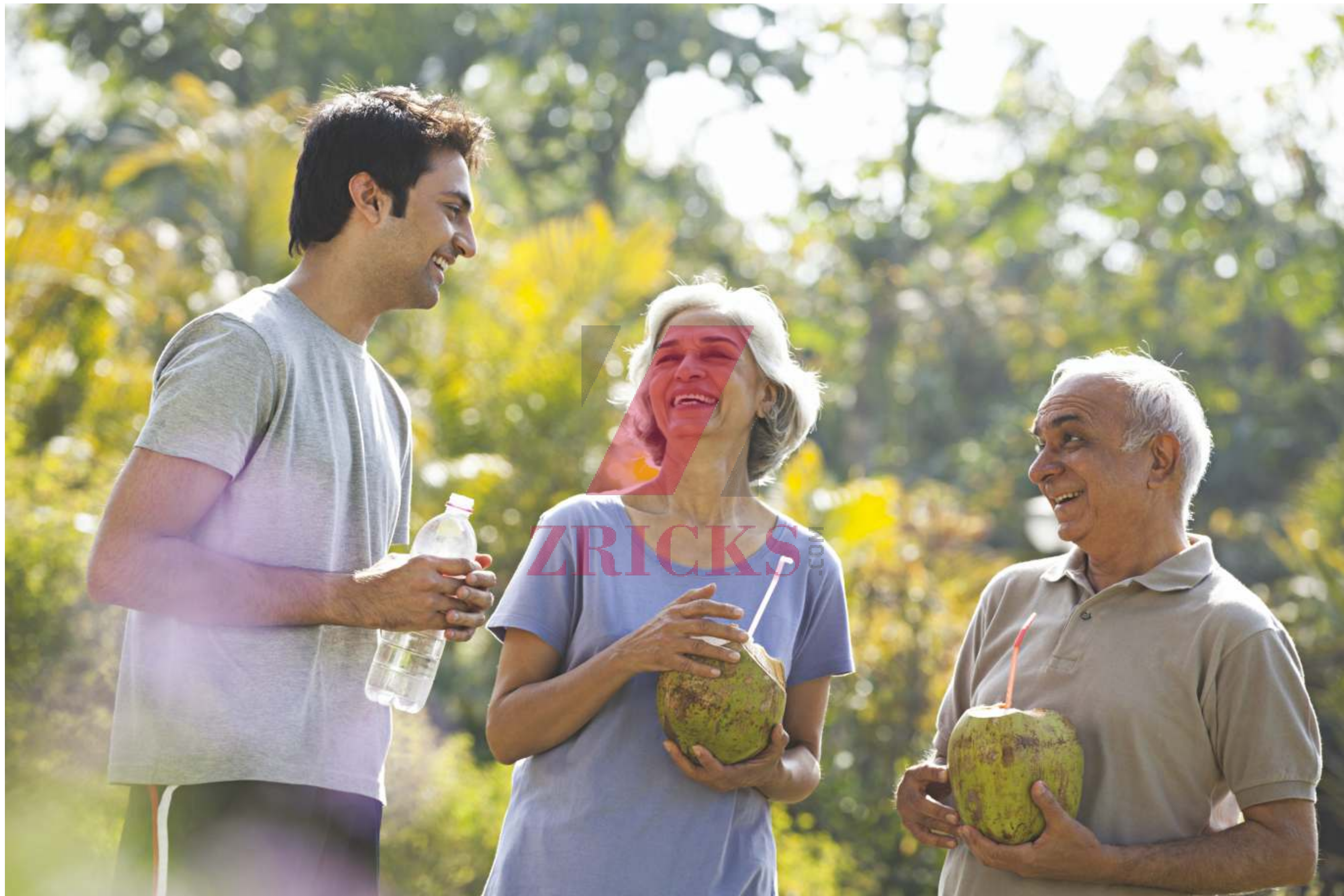


ZRICKS

# A Whistle of The Birds And Your Songs of Bliss

Kaamya Greens is the beautiful amalgamation of hand-picked necessities that let you experience a truly blissful life. Just like in a sweet melody, one would choose the most soothing notes to create wonderful sounding music.

Putting together everything that a modern family desires in the most harmonious way, we have created a merry melody for your life, that you can own and live, everyday.



# Amidst A Salubrious, Green And Peaceful World

Close to the city, yet away from the everyday. At the heart of nature, and with nature at the heart. Sikka Kaamyaa Greens melts away the hustle and bustle of urban life with an ecosystem that is unique in every way. Energy-efficient homes surrounded by enchanting lush greenery and cascading water features. In all things, this is luxury unimagined.



TRICKS

# Noida's Amazingly Unique & Luxurious Abode

Luxury and greenery embrace you with open arms at Sikka Kaamya Greens. This breathtaking community will be home to some of the most unseen marvels inspired by nature. Cleaner air, naturally cooler temperature, eco-friendly interior features, landscape irrigation system and solar powered communities are just few of the many secrets.





# Inspired From The Strength of Relationships

Sikka Kaamyaa Greens is a residential community with a difference. It's a way of life that's in perfect harmony with natural beauty that is both endearing and sustainable. This is the perfect haven where relationships grow.



# Exceeding Every Expectation

The affordably luxurious homes at Sikka Kaamyaa Greens offer its residents 2, 3 and 4 BHK apartments along with the advantage of a strategic location in the heart of Greater Noida (West) in sector 10. Designed with hand-picked facilities and amazing privileges, this project pampers you like nothing else, this is your world of happiness that truly exceeds every expectation.

ZRICKS.COM

## World-Class Amenities & Features

Grand entrance

24x7 security

Power backup

Clubhouse

Gymnasium

Earthquake resistant structure

Swimming pool

Good ventilation

Kids' play area

Basement & open car parking



# The Perfect Recreation And Haven of Joy

The state-of-the-art clubhouse offers an abundance of excellent facilities that turn your lifestyle into the most sophisticated and gratifying experience.

You can dive, splash and relax at the swimming pool or indulge in a lavishly ecstatic Jacuzzi bath.

The fully-equipped modern gymnasium helps you keep up with good health to enjoy the treasures of life completely.

Sikka Kaamyaa Greens is a perfect habitat for your children to be happy and full of verve. With expansive green open areas, an awesome kids' play zone and kids' pool, your little ones will experience life as a sweet and delightful song.

With a restaurant within the complex, you don't have to go out far to relish a delectable dinner with your loved ones. The open and covered parking facility is another advantage at Sikka Kaamyaa Greens.

# SITE LAYOUT PLAN



# LEGEND

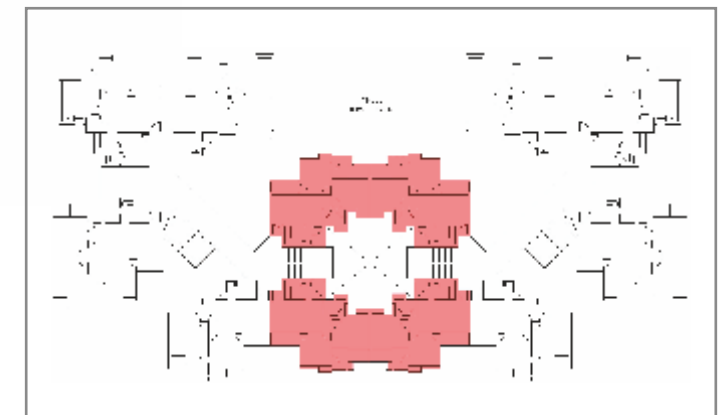
	TYPE A - 2 BHK + 2 TOILET SUPER AREA: 890 Sq. Ft.
	TYPE B - 2 BHK + 2 TOILET SUPER AREA: 990 Sq. Ft.
	TYPE C - 2 BHK + 1 STUDY/SR + 2 Toilet SUPER AREA: 1100 Sq. Ft.
	TYPE D - 3 BHK + 2 TOILET SUPER AREA: 1315 Sq. Ft.
	TYPE E - 3 BHK + 1 STUDY/SR + 4 Toilet SUPER AREA: 1450 Sq. Ft.
	TYPE F - 4 BHK + 1 STUDY/SR + 4 Toilet SUPER AREA: 1695 Sq. Ft.

1. Entry / Exit
2. Entrance Court
3. Security
4. Club House
5. Drop Off Point
6. Water Body & Fountain
7. Dedicated Hassel Free Parking
8. Landscaped Park
9. Recreational Area
10. Swimming Pool
11. Toddlers Pool
12. Changing Rooms
13. Meditation / Yoga Pavillion
14. Multipurpose Court
15. Kids' Play Zone
16. Sand Pit
17. Cabana / Gazebo
18. Open Seating
19. Jogging Track
20. Ramp In
21. Ramp Out
22. Outdoor Gathering Area
23. Shopping Complex

# TYPE A

SUPER AREA: 890 Sq. Ft.

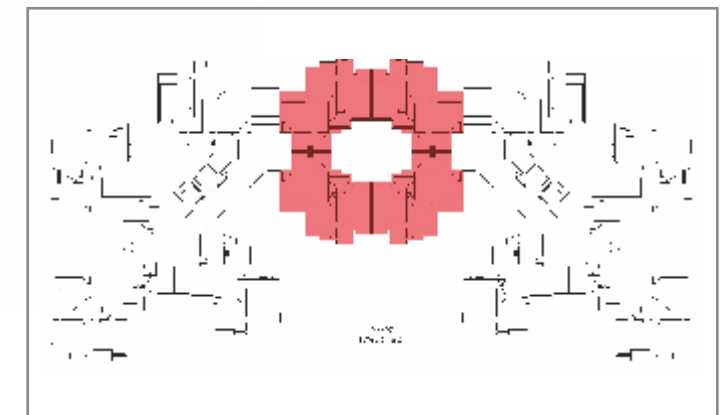
2 BHK + 2 Toilet





# TYPE B

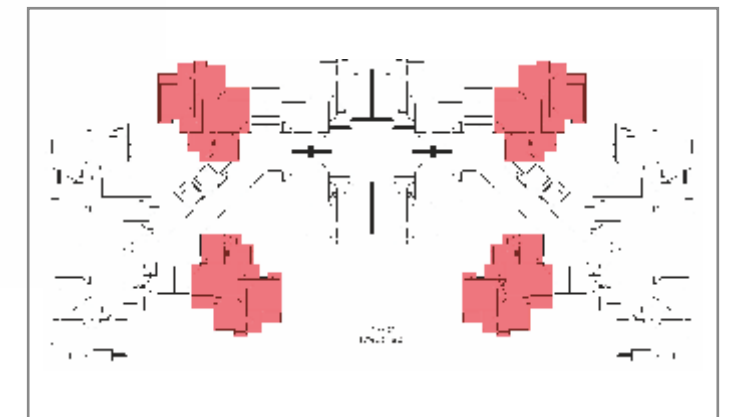
SUPER AREA: 990 Sq. Ft.  
2 BHK + 2 Toilet



# TYPE C

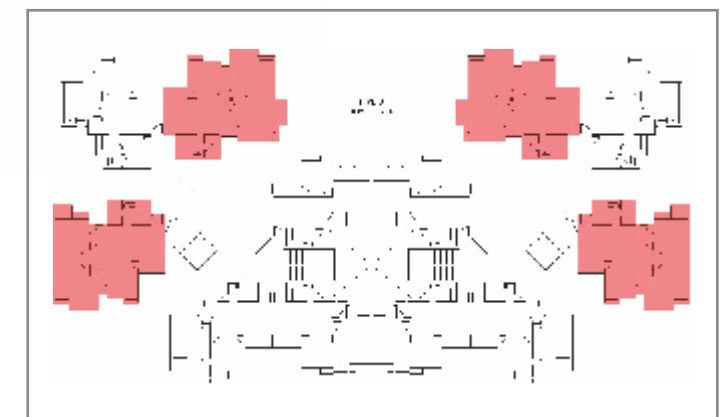
SUPER AREA: 1100 Sq. Ft.

3 BHK + 2 Toilet



# TYPE D

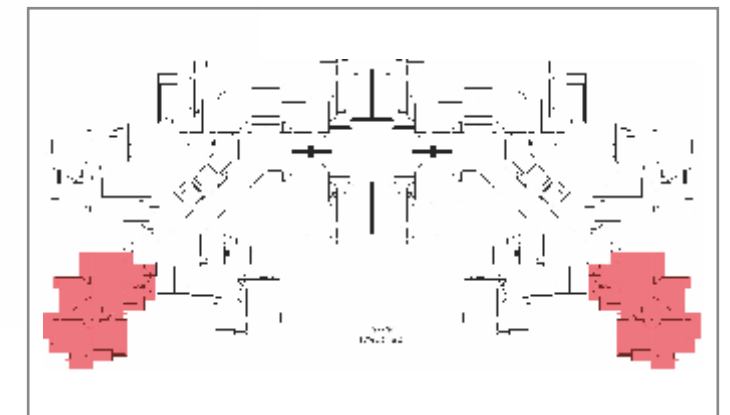
SUPER AREA: 1315 Sq. Ft.  
3 BHK + 2 Toilet



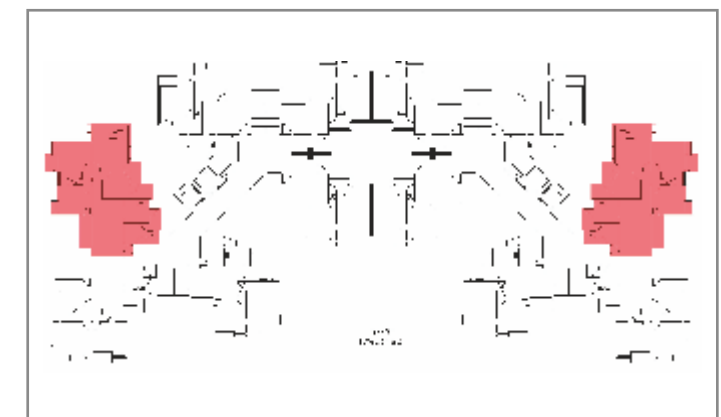
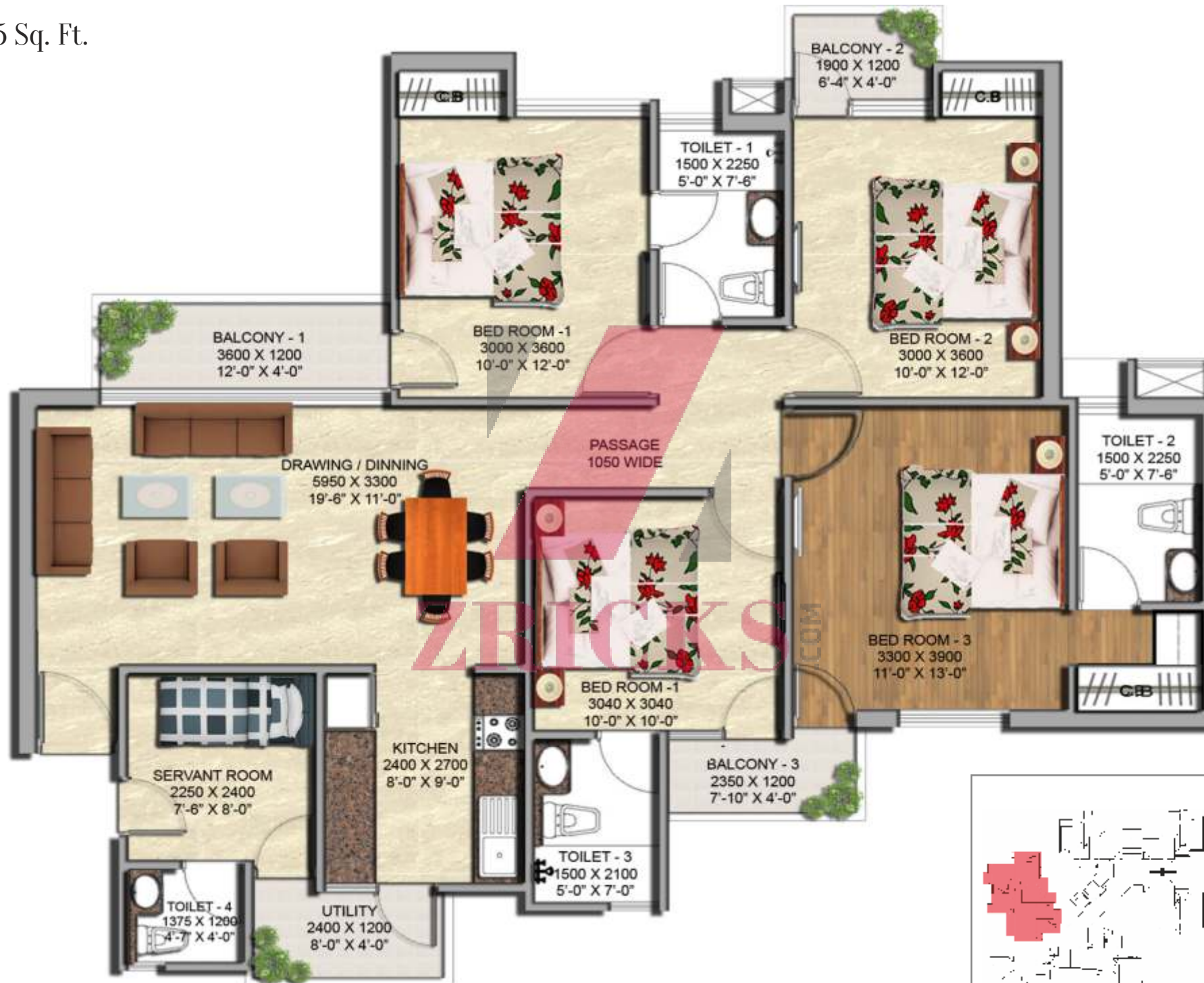
# TYPE E

SUPER AREA: 1450 Sq. Ft.

3 BHK + 3 Toilet

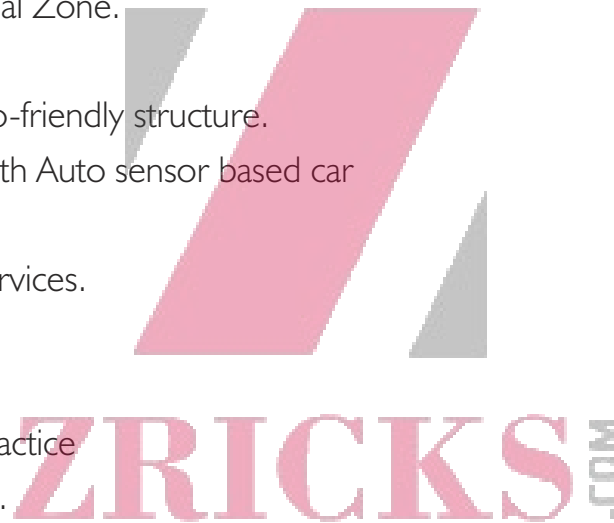


TYPE F  
SUPER AREA: 1695 Sq. Ft.  
4 BHK + 3 Toilet



# FEATURES & FACILITIES

1. Land allocated by Greater Noida Development Authority
2. Located in the heart of Greater Noida west, Sector-10.
3. Thoughtfully designed by RTA Pvt. Ltd for maximum usable spaces with all green facing apartments.
4. Total 75% plot area used as green space with 25% as construction area.
5. Abutting and overlooking designated Green Belt on Two Sides.
6. Proximity to Greater Noida Commercial zone and Institutional Zone.
7. High Speed Elevators
8. Widespread green plot open for free flow of light, air and eco-friendly structure.
9. 24x7 renowned High Tech security with Intercom, CCTV with Auto sensor based car Entry system at main gate and Main door of each flat.
10. 24x7 water supply & 100% power backup for all essential services.
11. Premium/five star ambience entrance lobby in each tower.
12. 3 side open apartment with high end specification
13. Certified earthquake resistant structure as per IS Codes of practice
14. Barrier free design to accommodate Differently abled people.
15. All flats having Natural Light and Ventilation.
16. Exclusive club with party hall, swimming pool and world-class amenities.
17. Fire Alarm/smoke detection system, fire-fighting equipment as per latest norms.
18. Provision of gas pipeline, single optic fiber for integrated TV, Television & Networking Services
19. Rain Water Harvesting and Water Re-Cycling
20. Open sitting court and water bodies
21. Excellent Connectivity from Delhi/NCR
22. Immediate Access from Noida FNG Expressway
23. State-of-the-art infrastructure



24. Optimum utilization of natural daylight in each apartment with insulated roofs in each block, for energy conservation

## Club & Indoor Activities:

- Ultra modern club with 'top of the line' facilities
- Swimming pool with separate kids' pool with separate jacuzzi
- Steam bath, sauna, & yoga centre
- Fully loaded multi-gymnasium
- Billiards
- Lawn tennis court
- Indoor badminton court
- Indoor squash court
- Table tennis
- Kids Play Lots

## Security

- State-of-the-art Centralized Security System.
- All lobbies equipped with CCTV Cameras.
- Smart Car Entry System.
- Three-Tier Security Systems.

## Outdoor Activities

- Cycling & jogging tracks.
- Multipurpose court (basketball, Badminton etc).
- Open seating court

# SPECIFICATIONS

## General

Earthquake resistant structure zone IV complaint designed by highly experience structural Engineers.

## Super Structure

Sheer wall structure with columns, R.C.C. slabs & beams with brick wall partitions in between designed by IIT Engineer's (As per IS code).

## Flooring

Vitrified Tiles in Drawing/Dining/Bedrooms. Laminated wooden flooring in Master Bedroom.

Anti-Skid ceramic tiles in kitchen, toilet & balcony. Marble stone flooring in corridor ,lift, lobby and staircase.

## Door & Windows

External doors & windows made of UPVC/Power Coated Aluminum.

Internal doors in Hardwood frames with laminated flush doors

Entrance door- Teakwood finish decorative door.

## Kitchen

Granite top working platform.

Stainless steel sink.

Ceramic glazed tikes 2 feet above working platform with chrome finish sanitary ware.

## Toilets

Provision for hot and cold water system. Glazed tiles in pleasing colors on walls upto door level. Added in external facade European W.C's washbasins & cisterns in light shade of standerd brand. Chrome plated fittings of standard make.

## Inside Wall Finish

Inside wall with POP punning and one concept wall in bed room, acrylic emulsion paint.

## Electricals

Modular switches, sufficient light and power points ,cable TV and Telephone points in drawing room and master bedroom. Copper wires in concealed PVC conduits with MCB.

## External Finish/ Lift

Modern and elegant outer finish with high quality paint/stone with plaster & decorative.

Lobby/ Entrance lobby wood/tiles up to 7 feet and texture paint

## External Facade

Exterior Design with superior paint finish.

## Intercom Facilities

Provision of intercom Facilitiy in each flat.

## Water Supply

Underground and overhead water tanks with pumps for uninterrupted water supply.

## PNG Gas Pipeline

Provision of gas pipeline infrastructure.

ZRICKS



## Exemplary Leadership Unprecedented Success

For a period of almost three decades now, Sikka has been pushing the boundaries to create spaces that are unrivaled in luxury, stature and design. With a keen eye on the future & a sound knowledge base of the global business environment & trends, Sikka has diversified its portfolio in Real Estate, Automobile, Hospitality & the Outdoor Media industry. Over the years, Sikka has completed a series of real estate project in and around the NCR region of India. Today the total built up area of their ongoing projects exceeds 6 million sq.ft. with plans to build around 3 million sq. ft. area in the current financial year, about 15 million sq. ft. in the coming 3 years, dwelling nearly a 100000 families. Along with

the prominent presence in the real estate, Sikka is a distinguished business entity in the industry of automobiles, posting an impressive turnover of INR 5 billion. In the hospitality sector the conglomerate is in the process of developing & operating 5 star hotels, service apartments, business & boutique hotels under its wings. This time around we wanted to push the envelope further. We wanted to challenge ourselves, exceed all expectations and usher the New Age India. The Proud India. Now, living up to the expectations, Sikka is presenting Sikka Kimaya Greens, a high-end premium residential group housing project at Sahastradhara Road, Dehradun.





SIKKA KARMIC GREENS  
Sec 78, Noida



SIKKA KARNAM GREENS  
Sec 143b, Noida



SIKKA KAAMNA GREENS  
Sec 143, Noida



SIKKA DOWNTOWN  
Sec 98, Noida



SIKKA KIMAYA GREENS  
Dehradun



SIKKA KRISHH GREENS  
Meerut





**Sikka**  
**KARMYA GREENS™**  
 SEC-10, GR, NOIDA (W)  
 LUXURIATE IN NATURE'S EMBRACE

**Sikka**  
**KARMIC GREENS®**  
 Nuevo Living

**KAIMA GALLERIA**  
 SMART RETAIL BY SIKKA  
 SECTOR 78, NOIDA

**Sikka**  
**Kaamna GREENS™**

**Sikka**  
**KARNAM**  
 Sec. 143B @ Expressway & FNG, Noida

**SIKKA**  
**KOSMIC GLOBE™**

**Sikka**  
**KAAVYAM GREENS™**  
 SECTOR-143B, NOIDA  
 WHERE LIFE IS A SUBLIME POEM

**the**  
**downtown™**  
 NOIDA  
 by Sikka

**sikka**  
**KAPITAL GRAND™**

# The Luxury of Location

Crafted to offer its residents accessibility and connectivity, Kaamya Greens is positioned near landmark destinations and high-end points like shopping malls, market area and spiritual destinations. The project enjoys close proximity to proposed metro (Phase II), Greater Noida Commercial Zone and institutional area. The strategic location and salubrious surrounding lets you enjoy hassle-free connectivity with Delhi, Noida City, Ghaziabad, NH 24, Greater Noida Expressway and Faridabad.

**The strategic location offers excellent connectivity with:**

- **Noida City Centre Metro Station:** at a distance of 7.5 km
- **Kalindi Kunj and Delhi:** at a distance of 11 km



**Site Office:**

GH-02B, Sector 10, Greater Noida (West).  
Mobile No.: +91 96500 90221 / 22 / 23 / 24 / 25 / 26 / 27 28  
Channel Partners Call: +91 96500 90229  
www.sikkakaamyagreens.com

**Head Office:**

Sikka House C - 60, Preet Vihar,  
Vikas Marg, Delhi - 110092, India.  
Tel.: +91 - 11 - 4050 0000, email: info@sikka.in, Website: www.sikka.in

Join us at:

Member of  
**CREDAI**

