



ZRICKS.COM



CORPORATE OFFICE: 5, 3rd floor, City Mart, Sohna Road, Gurgaon  
Ph: +91 124-4988988 (100 lines) Fax: +91 124-4143443 Mob: 98183 56111 - 333 - 555, 95608 46111 - 222 - 333  
E-mail: [info@avalongroup.in](mailto:info@avalongroup.in), [sales@avalongroup.in](mailto:sales@avalongroup.in) Web: [www.avalongroup.in](http://www.avalongroup.in)

Note: Visual representations shown in this brochure are purely conceptual. Builder reserves the right to change building plan, specifications, layout plans etc.



avalon  
ROSEWOOD  
BHIWADI

*Fragrance of quality living*



# Avalon

## Building Dreams in Bhiwadi

Karisma Kapoor

ZRICKS

### The Project

Behind the swaying evergreens and lush glades, there is a world that can be called truly Regal with beautifully landscaped gardens, broad pathways, flowers basking in the rays of the Sun, gentle breeze brushing against your senses and the ambience playing magic in your mind. Yes, this is Avalon Rosewood your very own Regal Lifestyle.

Avalon Rosewood, located on the 4-lane Mega Highway (200 ft. wide Alwar bypass Road) is a treat to life made affordable by Avalon. Spread over 17 acres of prime land, it is a dream project that has been designed to define the beauty of royal living. The impeccable interiors and the larger than life exteriors give the dwellers lot of reasons to celebrate all the seasons. The serene surroundings and the splendid aura give life a reason to smile and live in the tranquility of mind.

Avalon Rosewood, represents Avalon's three decades of valuable experience in providing affordable/luxury quality housing.

avalon  
ROSEWOOD



Haldiram's Outlet in Bhiwadi



Multiplex in Bhiwadi



Honda Plant, Bhiwadi

## The Location

Bhiwadi is the land of promises; land of the new sunshine. The industrial town of Rajasthan is the sub-continent's third largest industrial hub. Growing at the speed of thoughts, Bhiwadi is fast becoming one of the most prominent locales in the NCR region. With the implementation of neo-modernized townships, residential complexes, organized retail and corporate houses, Bhiwadi is developing at a very fast pace.

Honda Siel Cars, Hero Honda, Honda Scooters, Saint Gobain, Pepsi, Jaquar, Bausch & Lomb, Gillette India, LS Cable, Blue Star, Orient Craft, Kajaria, Motherson Group, Balkrishna Tyres, Shri Ram Piston, Shree Cements, Parryware, Nahar Spinning, Amtek Auto etc. and countless other blue chip companies are already present in and around Bhiwadi.

The excellent infrastructure in place is also attracting new players to Bhiwadi. Jay Auto Components Ltd., Oswal Casting Pvt. Ltd., FCC RICO, BK Gears, Yachiyo, Stride Autoparts Ltd., Water Forgings Pvt. Ltd. etc. are setting up their state-of-the-art facilities in Bhiwadi & the vicinity.

Located just 40 kms from Gurgaon, 25 kms from Manesar, 60 kms from IGI Airport, 70 kms from Delhi and 80 kms from Alwar, Bhiwadi is surely the next big thing as far as developing areas of NCR is concerned.

Bhiwadi not only offers thousands of employment opportunities but it also offers state-of-the-art facilities which include premier national & international educational institutes, well established hospitals and nursing homes for round-the-clock medical assistance, access to shopping malls & hypermarts like Easy Day, multiplexes, 4 star Hotels, eating joints like Haldiram's, Mcdonalds & Bikaner and other exciting places to visit.

Delhi-Mumbai Industrial Corridor (DMIC) along with Dedicated Freight Corridor (DFC) is a mega-infrastructure project of USD 90 Billion with the financial and technical aids from Japan, covering an overall length of 1483 Kms between the political capital and the business capital of India, i.e., Delhi and Mumbai. With Proposed airport project in the pipeline, Bhiwadi becomes a much more sought after destination.

With the introduction of rapid rail transit system between Delhi and Alwar via Bhiwadi in the near future, residential projects in Bhiwadi are going to be much more in demand. The rapid rail transit system would increase connectivity tremendously between Delhi and this part of the NCR region.

## Bhiwadi Map



## Features

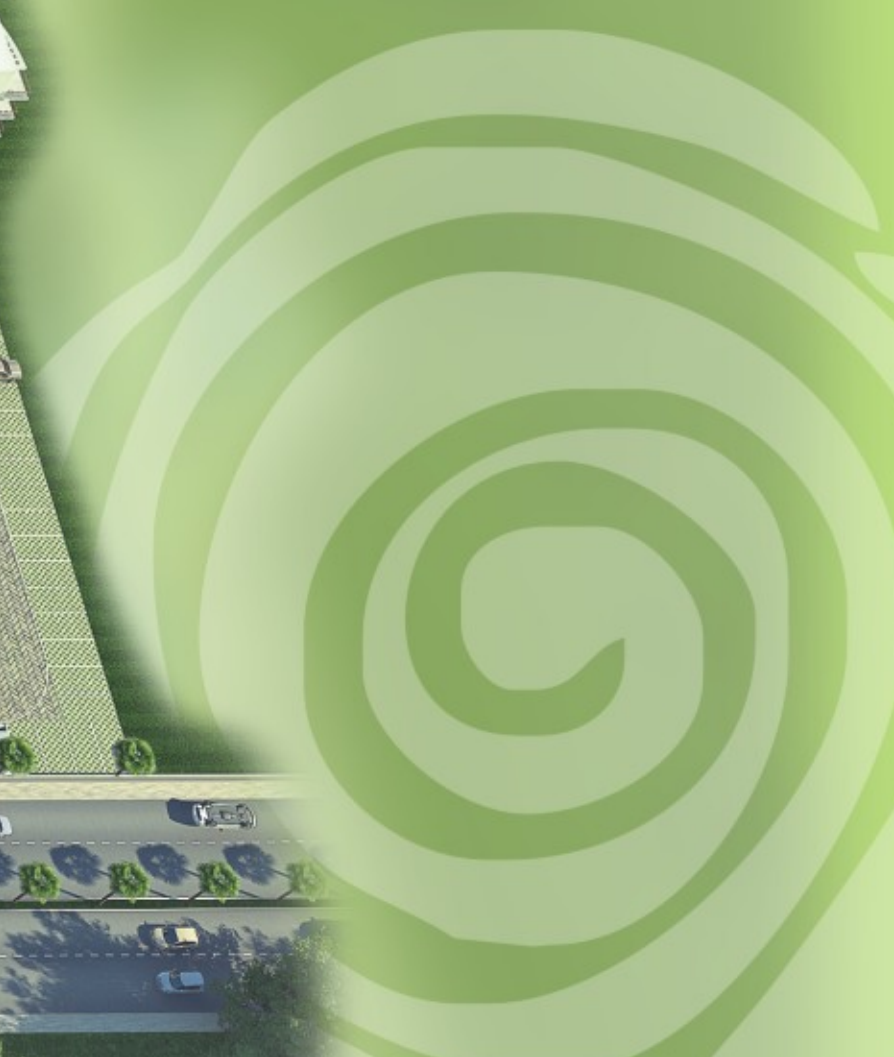
- Landscaped Entrance
- Escalation Free Prices
- Fully Approved Project
- Ground + 14 Storied Towers
- Earthquake Resistant RCC Framed Structure
- 2 BHK, 3 BHK & 4 BHK Apts.
- Well Planned Rooms
- Large Balconies
- Spacious Lift Lobbies
- Beautifully Landscaped Gardens
- Jogging Tracks
- State-of-the-Art Club
- Swimming Pool
- Tennis & Badminton Courts
- Round-the-Clock Security
- 24 Hrs. Water Supply
- 24 Hrs. Power Backup

avation  
ROSEWOOD

Bird Eye View



Artistic Impression



## Site Layout

**Type A - 2BHK - 1250 sq. ft.**

**Type B - T1 3BHK - 1650 sq. ft.  
(Unit - 2 & 4)**

**T2 3BHK - 1650 sq. ft.  
(Unit - 1 & 3)**

**Type C - 4BHK**



## LEGENDS

1. ENTRY / EXIT
2. CLUB
3. WATER BODY
4. PLAY GROUND
5. JOGGING TRACK
6. SWIMMING POOL
7. TENNIS COURT
8. PARTY LAWN COURT
9. BADMINTON COURT
10. BASKET BALL COURT
11. SKATING RING
12. SEATING COURT
13. MEDITATION YOGA
14. VOLLEY BALL COURT



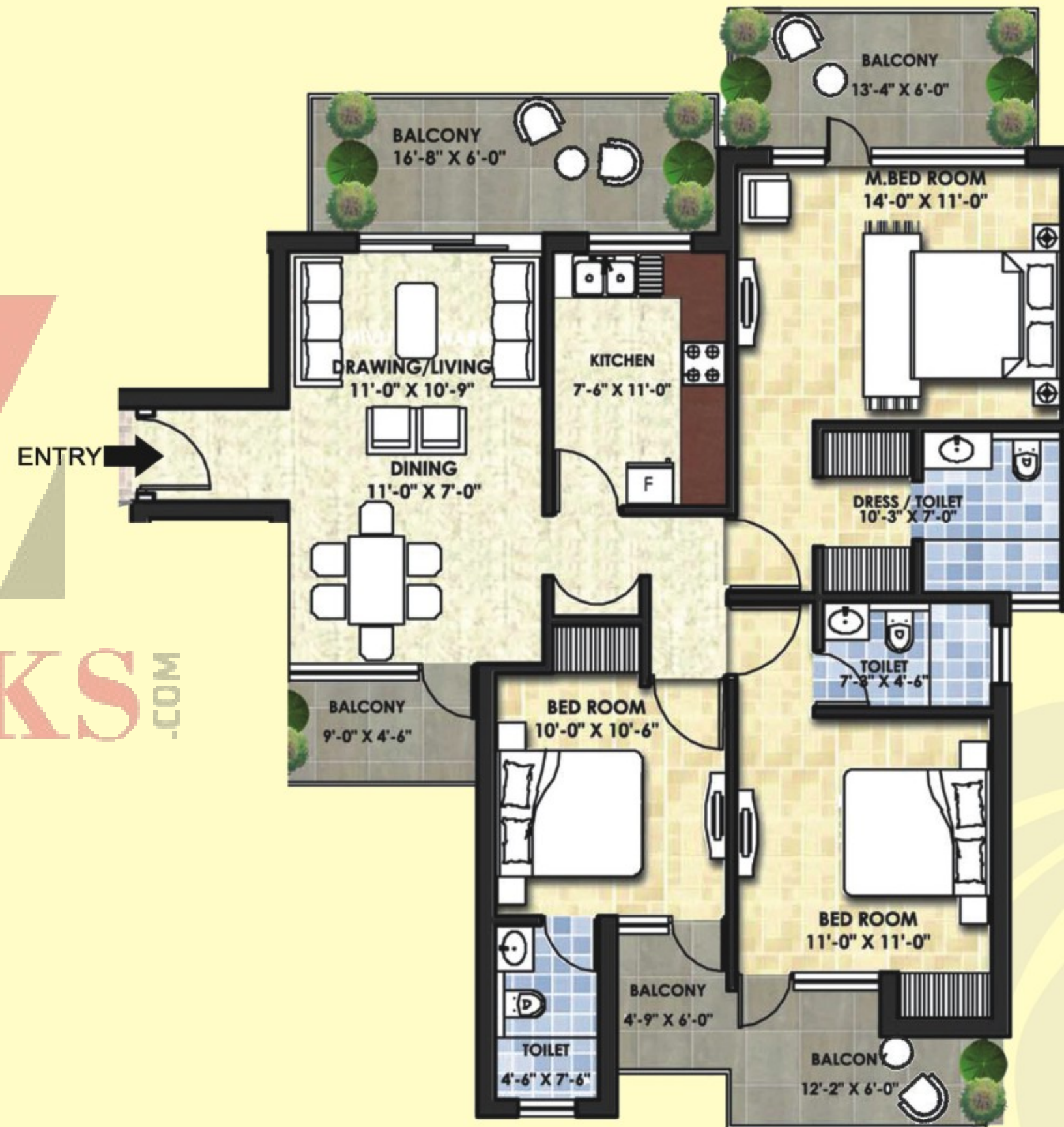
Not to Scale

**Note:** The site layout plan is not a legal document. It is tentative and describes the conceptual plan to convey the intent and purpose of Avalon Rosewood. The layout is subject to variations and modification has may be decided by the architect/Company.

Type 1-B (3BHK) 1650 Sq. Ft.



Type 2-B (3BHK) 1650 Sq. Ft.



Type - A (2BHK) 1250 Sq. Ft.



Specifications



**STRUCTURE**

Earthquake resistant R.C.C. and non load bearing brick walls.

**FLOORING**

LIVING, DINING, BEDROOMS & LOBBIES: Designer quality vitrified coloured tiles.

KITCHEN, TOILETS & BALCONIES: Anti-skid ceramic tiles.

STAIRS & CORRIDORS

Udaipur green marble



**FINISHING**

**DOORS:**

Wooden frame with skin doors, stainless steel hardware.

**OUTSIDE DOORS/ WINDOWS:**

Aluminum frames & glass shutters, anodized hardware.

**INTERNAL WALLS/CEILING:**

Oil bound distemper in pleasing colour shades with POP cornices.

**EXTERNAL**

Texture



**KITCHEN**

Designer modular woodwork with granite counter.

Stainless steel sink with hot & cold CP Fittings.

Glazed wall tiles upto 2 feet height above granite counter.

24-hour water supply

\*Piped Gas Facility



**ELECTRICAL**

All rooms including living, dining & kitchen in concealed PVC conduits with copper wiring and branded modular switches.

Sufficient light and power points.

Cable and telephone points in living room & bedrooms.

Broadband Connectivity



**TOILETS**

Branded sanitary fittings and CP Fittings.

Chinaware matching tiles upto 7 feet height in all the toilets.

Washbasin with granite counter and CP fittings.

24-hour water supply.



**COMMUNICATION & SECURITY SYSTEM**

**INTERCOM:**

Intercom facility in all the flats connected with guard room.

**SECURITY:**

Guard room at main entrance for efficient manual vigilance.





## Avalon Group

The word Avalon has originated from a mythical island, the island of the blessed or a paradise. As the name suggests, we endeavour to provide an island of excellence that we can call paradise on Earth yet affordable. The group utilizes the most advanced technologies to provide all the modern day amenities and premium construction qualities. Avalon Group has a vast experience of almost three decades in the real estate industry and very ably utilizes this storehouse of knowledge to provide an ultra modern lifestyle at affordable prices.

The Promoters of Avalon Group have successfully completed various Commercial and Residential projects in Bhiwadi, Delhi and Gurgaon. Possession in 'Avalon Gardens' and 'Avalon Residency (Phase I)' has already been handed over and more than 300 families are already staying in Avalon Gardens. Families in Avalon Residency have also started moving in. Avalon Residency (Phase II), Avalon Homes, Avalon Rangoli - Bhiwadi, Shree Ji Dham - Vrindavan and Avalon Rangoli - Dharuhera are in advance stage of construction. Construction in Avalon Royal Park has already started, & Avalon Regal Court has recently been launched. Besides, Avalon Group is coming up with a township & low-rise apartments in Bhiwadi, and also with a Group Housing Colony in Gurgaon. With around 6 millions sq. ft. already under construction in various Projects, another 6 million sq. ft. is in advanced stage of planning to be launched shortly at Bhiwadi and Gurgaon.

The offices of Avalon Group are situated at Delhi, Gurgaon and the promoters are qualified professionals having interests in construction, real estate & finance. They are extremely experienced and financially sound professionals.

### OUR VISION

To establish an everlasting relationship with all our customers and partners based on trust, integrity and transparency. We will continue reinforcing them by delivering above-expectation realty solutions. We know it is more important to be admired and respected rather than being the largest.

### OUR STRENGTHS

- Fair & Transparent work ethics
- Timely Construction and Completion of the projects
- Eco friendly construction practices
- Realty and infrastructure activities are the core expertise of the group
- Highly experienced team of professionals



ZRICKS.COM

## Projects from Our World

**FAMILIES RESIDING**

- 2 & 3 BHK Air-Conditioned Apartments
- More than 300 Families Residing
  - Club & Swimming Pool
  - 24 Hours Power Backup

**FAMILIES RESIDING**

- 2 & 3 BHK Affordable Apartments
  - Families started residing
- Spacious and well ventilated Apartments

**SOLD OUT**

- 1 & 2 BHK Affordable Apartments
- Gated Community, Landscaped Greens etc.
  - Possession very shortly

**SOLD OUT**

- 2 & 3 BHK Affordable Apartments
  - More than 80% open area
  - Beautiful Landscaped Greens
- Developing area with high appreciation value
  - Possession very shortly

**SOLD OUT**  
Construction in full swing

- 2 & 3 BHK Affordable Apartments
- On 75 Mtr. Wide Road, Sector-24, Dharuhera
  - Ample Covered Parking
  - Possession very shortly

## Projects from Our World

**avaion**  
**Shree Ji Dham**  
Vrindavan



**BOOKING OPEN**  
Construction in full swing

- 1 & 2 BHK Apartments
- A Blessed Location
- Basement+Ground+First+Second Floor connected with Lift
- Covered Parking

**avaion**  
**Plaza**  
SHOPPING COMPLEX



**SOLD OUT**  
Possession Shortly

- Glass Elevation
- Landscaping with cascading fountains in front
  - All Shops Front-Facing
- Low maintenance as compared to Malls

**avaion**  
**galleria**  
SHOPPING PLAZA



**BOOKING OPEN**  
Construction Started

- Permanent Exterior Glass Facade
- All shops on covered area basis
  - Low maintenance charges
  - Great return on investment

**avaion**  
**ROYAL PARK**  
BHIWADI



**BOOKING OPEN**  
Construction in full swing

- 2, 3 & 4 BHK Apartments
  - Golf Putting Zone
- Located on 4 lane Mega highway on Alwar bypas Road

**avaion**  
**REGAL COURT**  
Bhiwadi



**BOOKING OPEN**

- 2 BHK, 2 BHK + Study & 3 BHK Apartments
  - Landscaped Regal Entrance
- 24 Hrs. Water Supply & Power Backup

ZRICKS.COM