



**ansal TOWN**  
MEERUT

STEP INTO MODERN LIVING  
PHASE - III

**ZBRICKS**  
FLOOR PLANS



PERSPECTIVE VIEW OF G+2

# SPECIFICATIONS - G + 2

## STRUCTURE

Composite Structure with Brick Partition Walls

## FLOORING

Living / Dining

Bedrooms 1

Bedrooms 2

Toilets

Kitchen

Verandah & Balcony

Common Staircase & Landing

Vitrified Tiles

Vitrified Tiles

Wooden Laminated Flooring

Antiskid ceramic tiles

Vitrified Tiles

Antiskid ceramic tiles

Granite / Marble Stone

## TOILET

Dado

WC

Wash Basin

Fittings

Other fixtures

Water supply

Ceramic tiles dado up to door level (7'-0")

EWC with low level Cistern

Standard Make

CP fittings of standard make

Mirror over wash basin in all toilets, Towel rail / ring

Provision for Hot & Cold water supply

## KITCHEN

Dado

Working top

Sink

Fittings

Water supply

Other Fixtures

Ceramic tiles dado up to 2'-0" high above the working platform.

Granite Stone

Stainless steel sink with single bowl & drain board.

Standard CP fittings

Provision for Hot & Cold water supply

Modular Kitchen with Electric Chimney

## JOINERY

Door Frame

Door Shutters

(a) Main Door

(b) Bed Room / Kitchen/ Toilet

(c) Mumty

Window frame & shutter

Wardrobes

Common Staircase handrail

Well seasoned wooden door frames

Flush Door with Teak Veneer

Flush Door

Flush Door painted

UPVC / Aluminium

Only niches shall be provided

Designed Railing

## ELECTRICAL & PLUMBING

Electrical Work

Plumbing work

Copper wiring in concealed PVC conduits, sufficient light and power points with designer modular switches. One telephone point and one TATA SKY connection in Living Room only

G.I., C .I/PVC SWR grade. Pipes of standard quality. Provision for geyser points in all toilets. Provision for Aqua Guard point above kitchen counter

## INTERNAL FINISH

Walls

Ceiling

Oil bound Distemper

White Colour Oil bound Distemper

## EXTERNAL FINISH

Textured Paint/Weather proof paint

## ADDITIONAL FEATURES

Two Level Security system

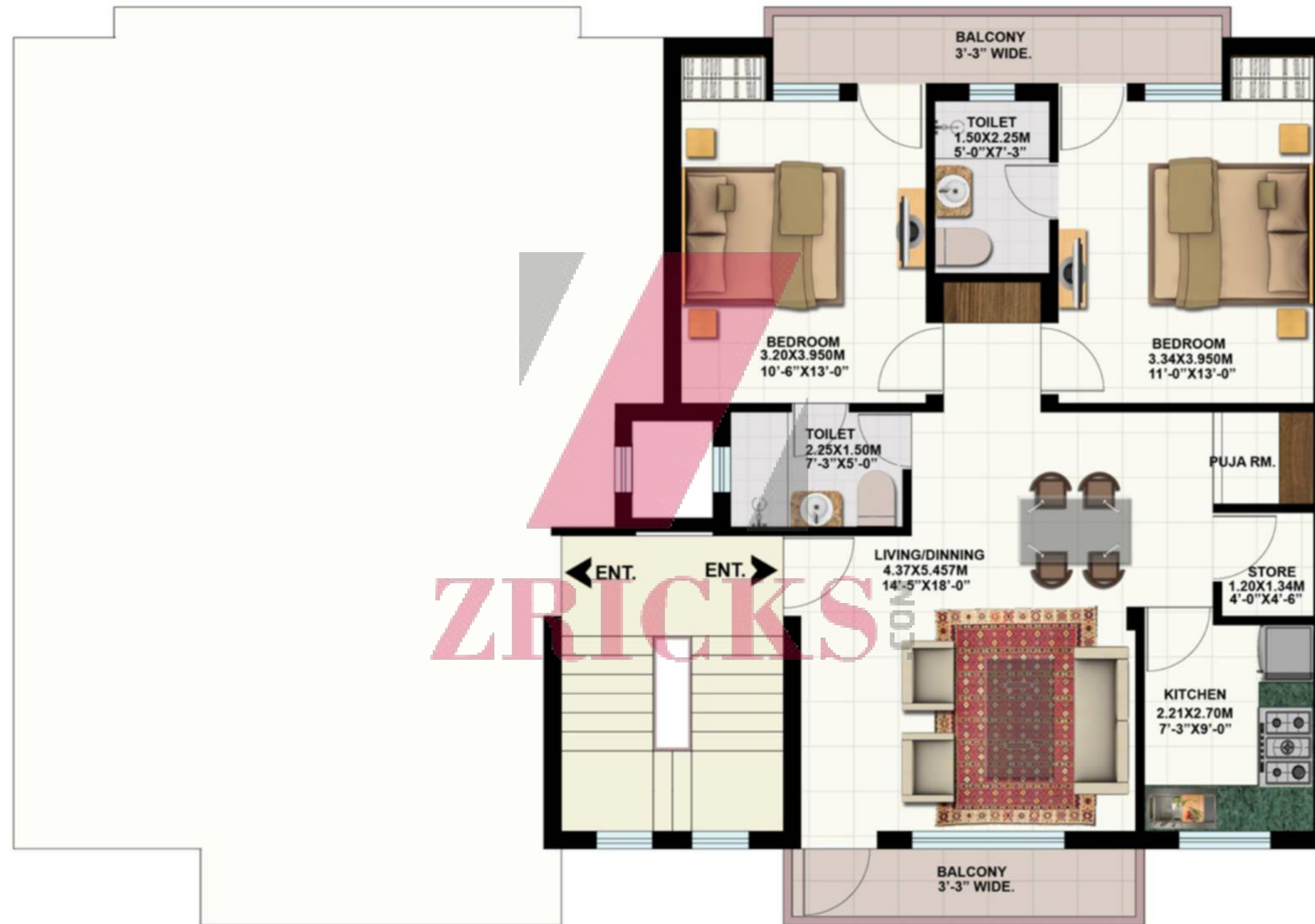
Note : All floor plans, layout plans, elevation and specifications are indicative and are subject to change as per Architect's decision. In order to provide reasonable architectural variations in the scheme, the architectural features may differ in different flats.

# GROUND FLOOR UNIT PLAN - 2 BEDROOM - G+2



Unit Saleable Area : 1080.00 Sq.ft.  
10.764 Sq.ft. = 1Sq.mtr.

# FIRST & SECOND FLOOR UNIT PLAN - 2 BEDROOM - G+2



Unit Saleable Area : 1080.00 Sq.ft.  
10.764 Sq.ft. = 1Sq.mtr.



PERSPECTIVE VIEW OF 3 BEDROOM APARTMENTS

# SPECIFICATIONS - 3 BEDROOM APARTMENTS

## STRUCTURE

Earth Quake Resistant RCC Framed Structure with Brick Partition Walls

## FLOORING

Living/Dining

Vitrified Tiles

Bedrooms

Vitrified Tiles

Toilets

Antiskid ceramic tiles

Kitchen

Vitrified Tiles

Verandah & Balcony

Antiskid ceramic tiles

Common Staircase & Landing

Granite up to 1st Floor mid landing and Kota Stone in balance area till Terrace Level

Main Lift Lobby & Common Passage at every floor

Designed flooring in Granite/Vitrified Tile/ Marble

## TOILET

Dado

Ceramic tiles dado up to door level

WC

EWC with low level Cistern

Wash Basin

Standard Make

Fittings

CP Fittings of standard make

Other fixtures

Mirror over wash basin in all toilets

Towel rail/ring

Water supply

Provision for Hot & Cold water supply

## KITCHEN

Dado

Ceramic tiles dado of 2'-0" height above the working platform

Working top

Granite Stone

Sink

Stainless steel sink with single bowl & drain board

Fittings

CP Fittings of standard make

Water supply

Provision for Hot & Cold water supply

## JOINERY

Door Frame

Well seasoned Wooden door frames

Door Shutters

(a) Main Door

Flush Door with Veneer

(b) Bed Room/Kitchen/Toilet

Flush Door

(c) Mumty

Flush Door painted

Window frame & shutter

UPVC / Aluminium

Wardrobes

Only niches shall be provided

Common Staircase handrail

Designed handrail

## ELECTRICAL & PLUMBING

Electrical work

Copper wiring in concealed PVC conduits, sufficient light and power points with designer modular switches. One telephone point in Living Room and each bed room

Plumbing work

G.I., C .I/PVC SWR grade. Pipes of standard quality. Provision for geyser points in all toilets. Provision for Aqua Guard point above counter. Provision for Invertor (wiring only)

Lifts

Modern elevators with genset back up and tastefully done up interior

Genset

Genset back up for essential services

Fire

Wet risers installed at every floor landing.

## INTERNAL FINISH

Walls

Oil Bound Distemper

Ceiling

White Colour Oil Bound Distemper

## EXTERNAL FINISH

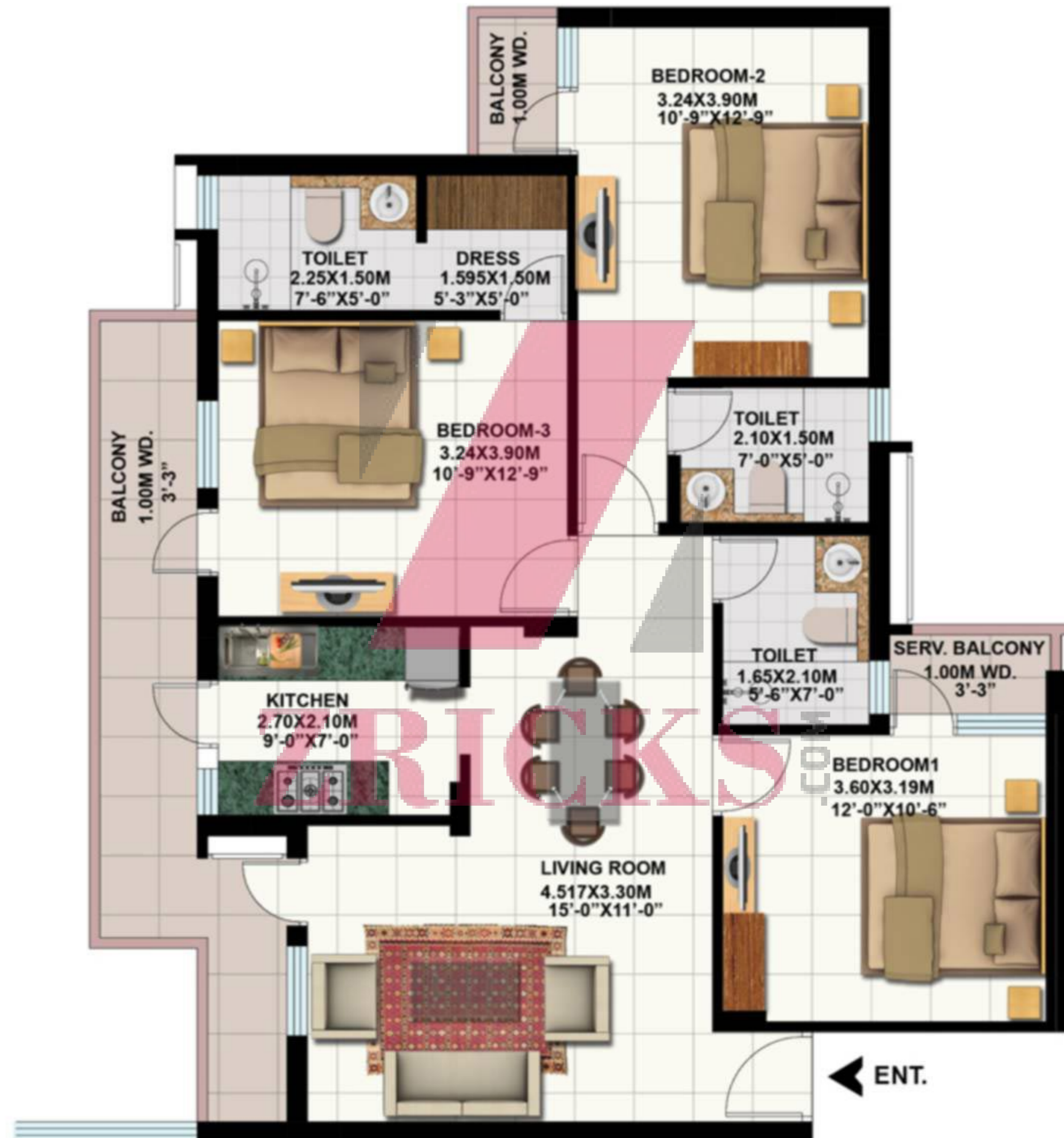
Textured Paint/Weather proof paint

## ADDITIONAL FEATURES

One TATA SKY Connection Only in Living Room, Two Level Security System

Note : All floor plans, layout plans, elevation and specifications are indicative and are subject to change as per Architect's decision without prior information. In order to provide reasonable architectural variations in the scheme, the architectural features may differ in different flats.

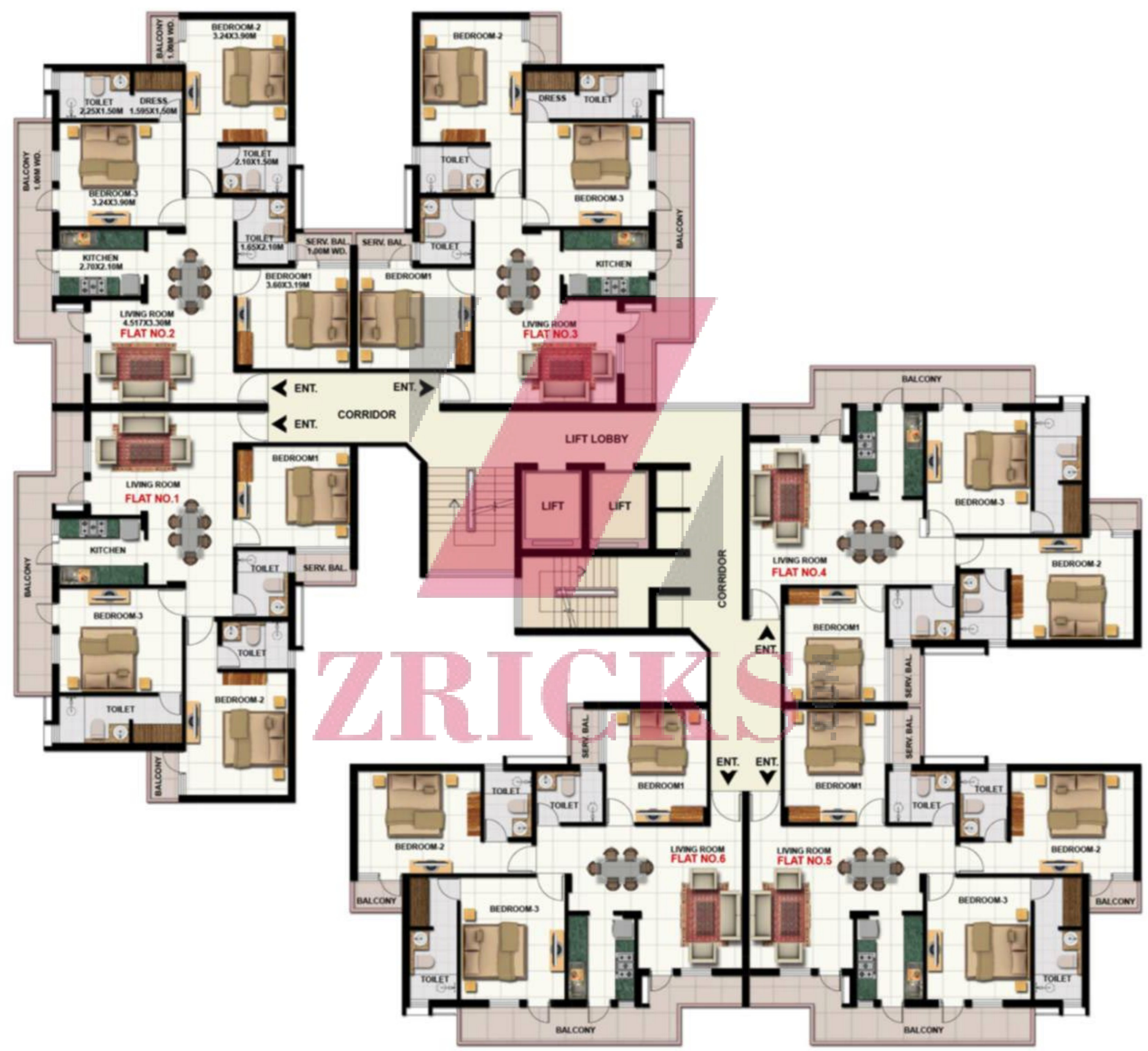
# TYPE A - 3 BEDROOM APARTMENTS



Unit Saleable Area : 1365.00 Sq.ft.  
10.764 Sq.ft. = 1Sq.mtr.



# TYPE A CLUSTER - 3 BEDROOM APARTMENTS





PERSPECTIVE VIEW OF TYPE - B 2BHK APARTMENTS - SPRUCE , TULIP, VIBURNUM & WALNUT

# SPECIFICATION OF TYPE - B 2BHK APARTMENTS - SPRUCE , TULIP, VIBURNUM & WALNUT

## STRUCTURE

Earth Quake Resistant RCC Framed Structure with Brick Partition Walls

## FLOORING

Living/Dining	Vitrified Tiles
Bedrooms	Vitrified Tiles
Toilets	Antiskid ceramic tiles
Kitchen	Vitrified Tiles
Verandah & Balcony	Antiskid ceramic tiles
Common Staircase & Landing	Granite up to 1st Floor mid landing and Kota Stone in balance area till Terrace Level
Main Lift Lobby & Common Passage at every floor	Designed flooring in Granite/Vitrified Tile/ Marble

## TOILET

Dado	Ceramic tiles dado up to door level
WC	EWC with low level Cistern
Wash Basin	Standard Make
Fittings	CP Fittings of standard make
Other fixtures	Mirror over wash basin in all toilets
	Towel rail/ring
	Provision for Hot & Cold water supply

Water supply

## KITCHEN

Dado	Ceramic tiles dado of 2'-0" height above the working platform
Working top	Granite Stone
Sink	Stainless steel sink with single bowl & drain board
Fittings	CP Fittings of standard make
Water supply	Provision for Hot & Cold water supply

## JOINERY

Door Frame	Well seasoned Wooden door frames
Door Shutters	
(a) Main Door	Flush Door with Veneer
(b) Bed Room/Kitchen/Toilet	Flush Door
(c) Mumty	Flush Door painted
Window frame & shutter	UPVC / Aluminium
Wardrobes	Only niches shall be provided
Common Staircase handrail	Designed handrail

## ELECTRICAL & PLUMBING

Electrical work	Copper wiring in concealed PVC conduits, sufficient light and power points with designer modular switches. One telephone point in Living Room and each bed room
Plumbing work	G.I., C .I/PVC SWR grade. Pipes of standard quality. Provision for geyser points in all toilets. Provision for Aqua Guard point above counter. Provision for Inverter (wiring only)
Lifts	Modern elevators with genset back up and tastefully done up interior
Genset	Genset back up for essential services
Fire	Wet risers installed at every floor landing.

## INTERNAL FINISH

Walls	Oil Bound Distemper
Ceiling	White Colour Oil Bound Distemper

## EXTERNAL FINISH

Textured Paint/Weather proof paint

## ADDITIONAL FEATURES

One TATA SKY Connection Only in Living Room, Two Level Security System

Note : All floor plans, layout plans, elevation and specifications are indicative and are subject to change as per Architect's decision without prior information. In order to provide reasonable architectural variations in the scheme, the architectural features may differ in different flats.



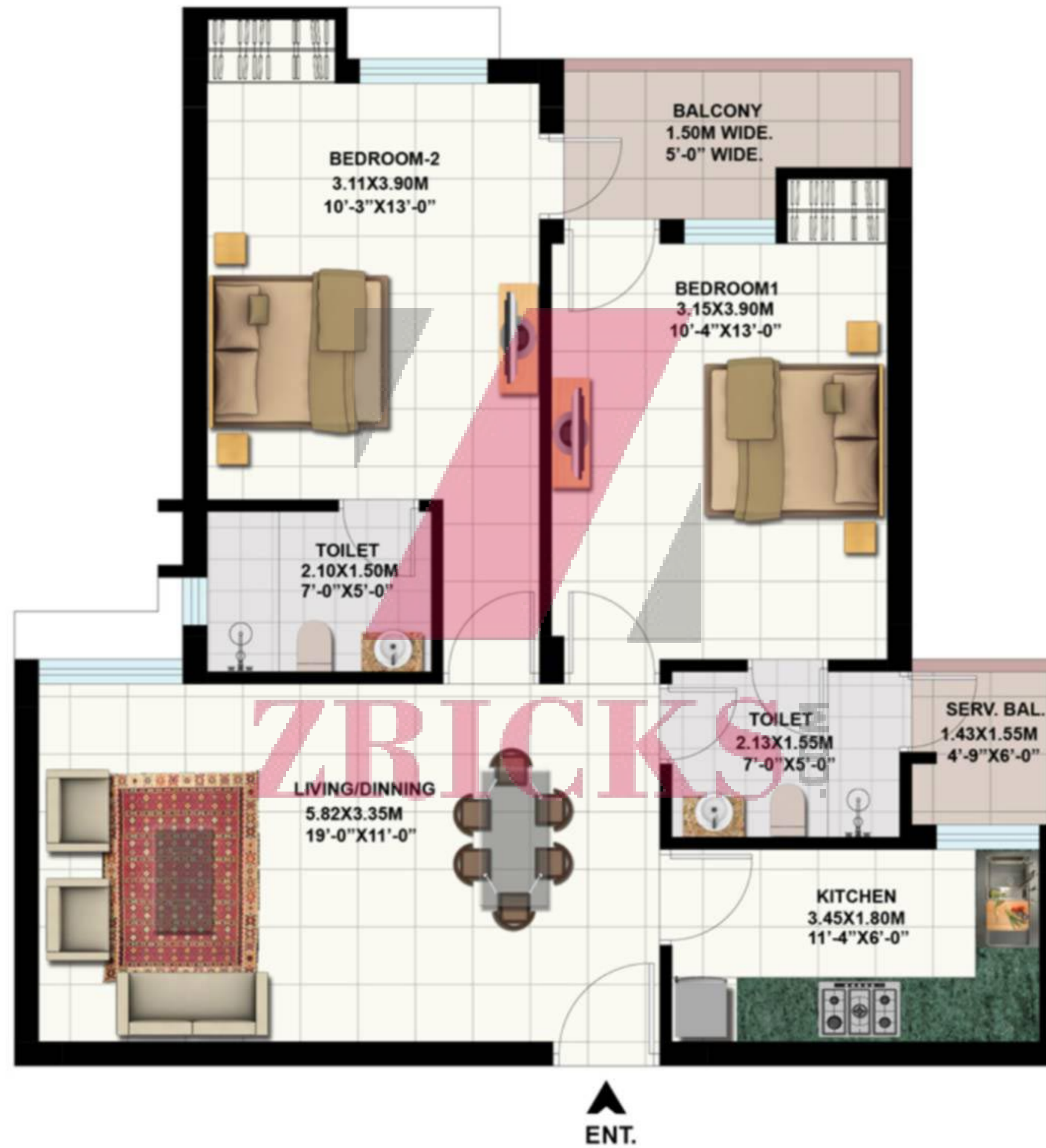
PERSPECTIVE VIEW OF ANSAL TOWN ENTRANCE GATE ON 24 MTR. ROAD

## SALIENT FEATURES

- 2 & 3 bedroom free hold flats in Ansal Town, Meerut
- Located on the National Highway-58
- Approved by MDA (Meerut Development Authority)
- Ansals Town Walk (Shopping Destination)
- School within the township
- Ansals Club Royale with Swimming Pool / Gym / Card Room / Badminton Court
- Ansals Galleria (Shop-cum-office)
- Landscaped Parks with Gazebo
- 24 hours Security
- Children Play Area
- Designer Entrance Gate

ZRICKS.COM

# TYPE B - 2 BEDROOM APARTMENTS



Unit Saleable Area : 960.00 Sq.ft.  
10.764 Sq.ft. = 1Sq.mtr.

# TYPE B CLUSTER - 2 BEDROOM APARTMENTS





PERSPECTIVE VIEW OF TYPE - C 2BHK APARTMENTS - NECTOR, OAK, PALM & QUINCE



# PERSPECTIVE VIEW OF TYPE - C 2BHK APARTMENTS - NECTOR, OAK, PALM & QUINCE

## STRUCTURE

Earth Quake Resistant RCC Framed Structure with Brick Partition Walls

## FLOORING

Living/Dining  
Bedrooms  
Toilets  
Kitchen  
Verandah & Balcony  
Common Staircase & Landing  
Main Lift Lobby & Common Passage at every floor

Vitrified Tiles  
Vitrified Tiles  
Antiskid ceramic tiles  
Vitrified Tiles  
Antiskid ceramic tiles  
Granite up to 1st Floor mid landing and Kota Stone in balance area till Terrace Level  
Designed flooring in Granite/Vitrified Tile/ Marble

## TOILET

Dado  
WC  
Wash Basin  
Fittings  
Other fixtures

Ceramic tiles dado up to door level  
EWC with low level Cistern  
Standard Make  
CP Fittings of standard make  
Mirror over wash basin in all toilets  
Towel rail/ring  
Provision for Hot & Cold water supply

Water supply

## KITCHEN

Dado  
Working top  
Sink  
Fittings  
Water supply

Ceramic tiles dado of 2'-0" height above the working platform  
Granite Stone  
Stainless steel sink with single bowl & drain board  
CP Fittings of standard make  
Provision for Hot & Cold water supply

## JOINERY

Door Frame  
Door Shutters  
(a) Main Door  
(b) Bed Room/Kitchen/Toilet  
(c) Mumty  
Window frame & shutter  
Wardrobes  
Common Staircase handrail

Well seasoned Wooden door frames

Flush Door with Veneer  
Flush Door  
Flush Door painted  
UPVC / Aluminium

Only niches shall be provided  
Designed handrail

## ELECTRICAL & PLUMBING

Electrical work

Copper wiring in concealed PVC conduits, sufficient light and power points with designer modular switches. One telephone point in Living Room and each bed room

Plumbing work

G.I., C .I./PVC SWR grade. Pipes of standard quality. Provision for geyser points in all toilets. Provision for Aqua Guard point above counter. Provision for Inverter (wiring only)

Lifts

Modern elevators with genset back up and tastefully done up interior

Genset

Genset back up for essential services

Fire

Wet risers installed at every floor landing.

## INTERNAL FINISH

Walls  
Ceiling

Oil Bound Distemper  
White Colour Oil Bound Distemper

## EXTERNAL FINISH

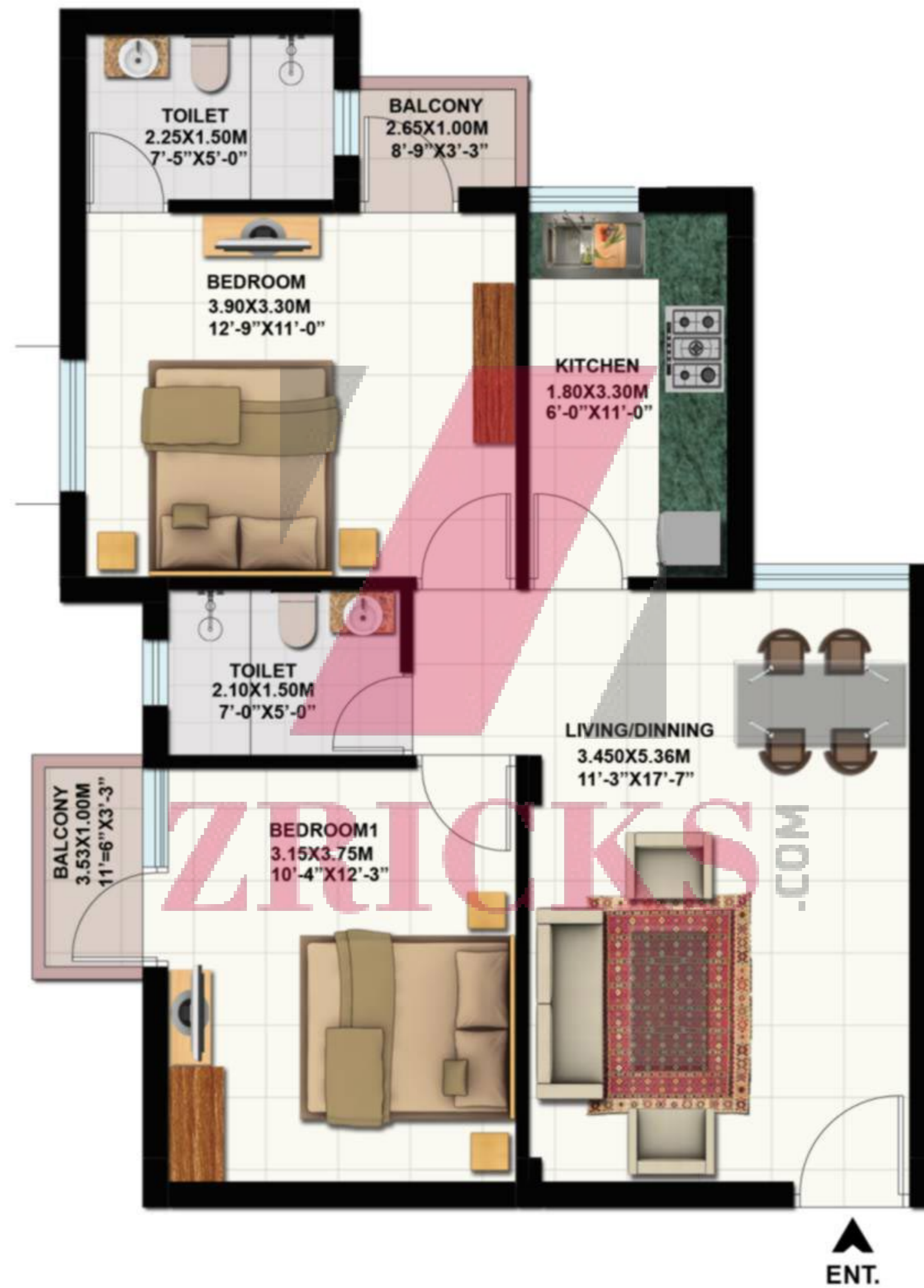
Textured Paint/Weather proof paint

## ADDITIONAL FEATURES

One TATA SKY Connection Only in Living Room, Two Level Security System

Note : All floor plans, layout plans, elevation and specifications are indicative and are subject to change as per Architect's decision without prior information. In order to provide reasonable architectural variations in the scheme, the architectural features may differ in different flats.

# TYPE C - 2 BEDROOM APARTMENTS



Unit Saleable Area : 935.00 Sq.ft.  
10.764 Sq.ft. = 1Sq.mtr.

# TYPE C CLUSTER - 2 BEDROOM APARTMENTS





PERSPECTIVE VIEW OF TYPE - D 2BHK APARTMENT - ROSE

# SPECIFICATIONS OF TYPE - D 2BHK APARTMENT - ROSE

## STRUCTURE

Earth Quake Resistant RCC Framed Structure with Brick Partition Walls

## FLOORING

Living/Dining

Vitrified Tiles

Bedrooms

Vitrified Tiles

Toilets

Antiskid ceramic tiles

Kitchen

Vitrified Tiles

Verandah & Balcony

Antiskid ceramic tiles

Common Staircase & Landing

Granite up to 1st Floor mid landing and Kota Stone in balance area till Terrace Level

Main Lift Lobby & Common Passage at every floor

Designed flooring in Granite/Vitrified Tile/ Marble

## TOILET

Dado

Ceramic tiles dado up to door level

WC

EWC with low level Cistern

Wash Basin

Standard Make

Fittings

CP Fittings of standard make

Other fixtures

Mirror over wash basin in all toilets

Water supply

Towel rail/ring

Provision for Hot & Cold water supply

## KITCHEN

Dado

Ceramic tiles dado of 2'-0" height above the working platform

Working top

Granite Stone

Sink

Stainless steel sink with single bowl & drain board

Fittings

CP Fittings of standard make

Water supply

Provision for Hot & Cold water supply

## JOINERY

Door Frame

Well seasoned Wooden door frames

Door Shutters

(a) Main Door

Flush Door with Veneer

(b) Bed Room/Kitchen/Toilet

Flush Door

(c) Mumty

Flush Door painted

Window frame & shutter

UPVC / Aluminium

Wardrobes

Only niches shall be provided

Common Staircase handrail

Designed handrail

## ELECTRICAL & PLUMBING

Electrical work

Copper wiring in concealed PVC conduits, sufficient light and power points with designer modular switches. One telephone point in Living Room and each bed room

Plumbing work

G.I., C .I./PVC SWR grade. Pipes of standard quality. Provision for geyser points in all toilets. Provision for Aqua Guard point above counter. Provision for Inverter (wiring only)

Lifts

Modern elevators with genset back up and tastefully done up interior

Genset

Genset back up for essential services

Fire

Wet risers installed at every floor landing.

## INTERNAL FINISH

Walls

Oil Bound Distemper

Ceiling

White Colour Oil Bound Distemper

## EXTERNAL FINISH

Textured Paint/Weather proof paint

## ADDITIONAL FEATURES

One TATA SKY Connection Only in Living Room, Two Level Security System

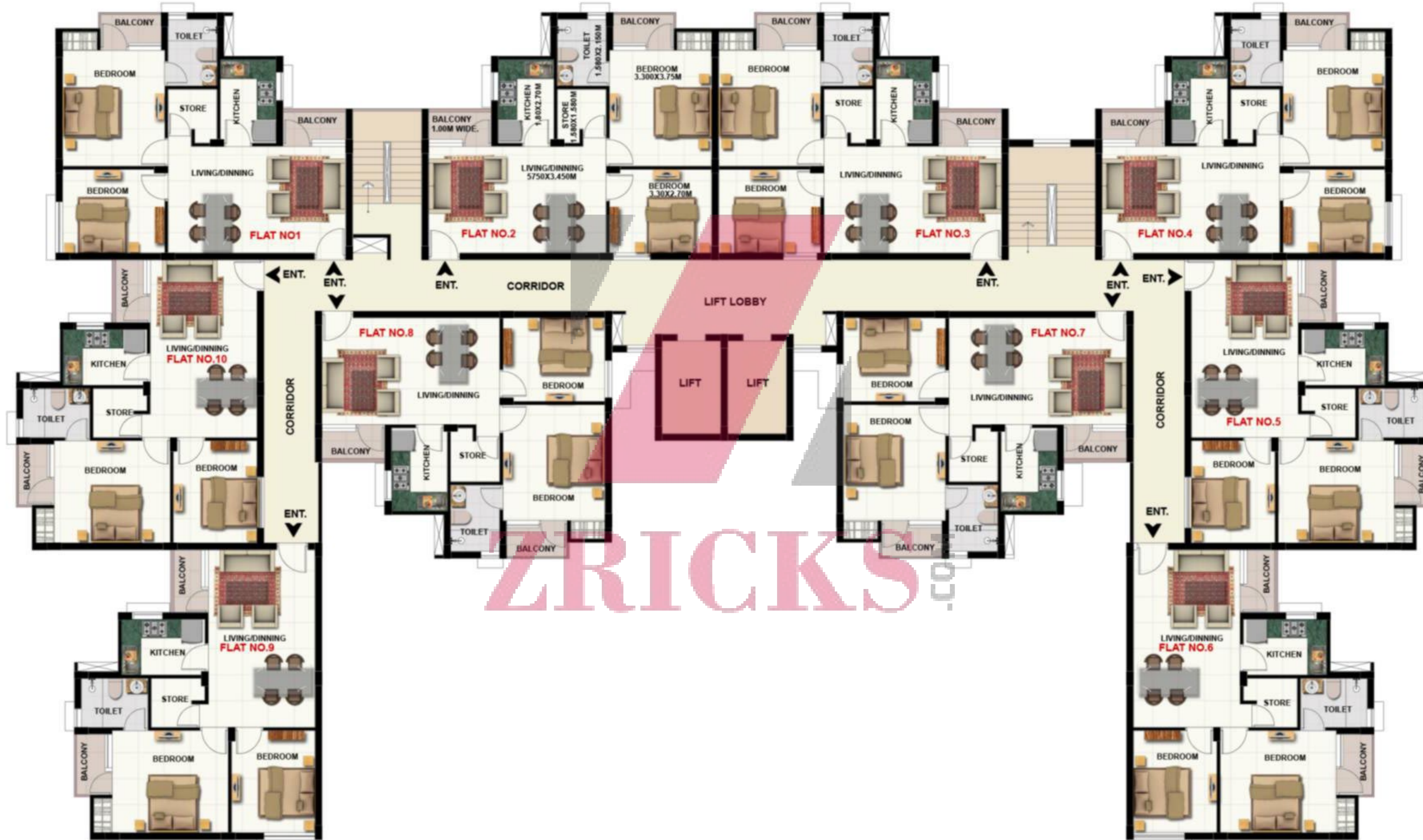
Note : All floor plans, layout plans, elevation and specifications are indicative and are subject to change as per Architect's decision without prior information. In order to provide reasonable architectural variations in the scheme, the architectural features may differ in different flats.

# TYPE D - 2 BEDROOM APARTMENTS



Unit Saleable Area : 845.00 Sq.ft.  
10.764 Sq.ft. = 1Sq.mtr.

# TYPE D CLUSTER - 2 BEDROOM APARTMENTS



## LOCATION PLAN OF ANSAL TOWN, MEERUT



**ansal HOUSING & CONSTRUCTION LTD.**  
An ISO 9001:2008 Company



**Meerut Site Office :** Ansal Town, NH-58, Delhi- Roorkee Bypass Road, near Modipuram crossing, Meerut.

**Meerut Branch Office :** C-106, 1st Floor, C-Block, Metro Plaza, Delhi Road, Meerut (U.P.), Ph.: 0121-4009570 / 2402921

**Head Office :** 15, UGF, Indra Prakash, 21, Barakhamba Road, New Delhi - 110 001. Ph. : 011-43577100, 43577131, 43577230, 43577269

Fax : 011-23350847 **E-mail :** marketing@ansals.com **Website :** www.ansals.com