



ENTER THE WORLD OF  
*Luxury*



Marketing Office : 221-223, 1Ind Floor, Vipul Agora, M.G. Road, Gurgaon, (Haryana) Tel : 0124 - 4375176  
 Site Office : AT 7th Mile Stone, SH - 25, Village - Tatarpur, Khjuriwas, Bhiwadi, (Raj.)  
 Email : marketing@krishvatika.com Website : www.krishgroup.org

This is not a legal document. All floor plans, site plan, specifications, Amenities facilities, photos and perspective view are tentative in nature and are subject to revision.



ABOUT  
*Krish Group*

Krish Group is one of the leading developers in the country instrumental in bringing world-class real estate solutions to Bhiwadi. It is guided by the vision of Mr S K Singhal, an authority in the field of finance and Mr Sunil Agarwal, who has mastered the trade of cement and steel. In a very short span of time the group has delivered around 13.00 Lacs sq. ft of residential and commercial space and it is poised to double over the next two years. Our financial standing is very strong and it manifests in our Zero debt capital structure apart from abundant reserves and huge land bank spread across various cities.

Our strength lies in our commitment towards our customers and we leave no stone unturned to deliver on that commitment. A testimony to this is the record time of Two and a Half years in which we handed the possession of homes at Krish City, a project that got a 5 star rating from CRISIL. With Krish Vatika, a 6 star CRISIL rated project, we outperformed ourselves by offering possession in just 20 months. We understand and respect our customers and that is the driving force behind the way we think and what we do because at Krish, we believe in turning dreams into reality.





Developer of the year - Residential  
Krish Group  
for  
Krish Vatika



**CREDAI REAL ESTATE AWARD**

CREDAI, the apex body for private sector developers, held CREDAI Real Estate Awards to acknowledge the stellar projects by Indian developers across various categories.

Krish was the Top 3 finalists of CREDAI Real Estate Awards 2012 in the Affordable Category



**CRISIL STAR RATING**

CRISIL Real Estate Star Ratings benchmark real estate projects basis quality of legal documentation, construction related risks, financial viability of the project besides the background and track record of the project sponsor. Krish projects have received a rating of as high as 6 by Crisil



ACTUAL SITE PHOTOGRAPH

**KRISH CITY**

Located in Bhiwadi in Tapukara, Krish City offers affordable housing of 1710 Homes. Phase I was launched in 2010 and 550 Homes were delivered in 2012. Phase II started in 2011 and possession will be offered at the end of 2014.

**KRISH CITY 2**



2BHK + 1TOILET - 820 SQ. FT. TYPE 2



2BHK + 2TOILET - 980 SQ. FT.



3BHK + 2 TOILET - 1210 SQ. FT.

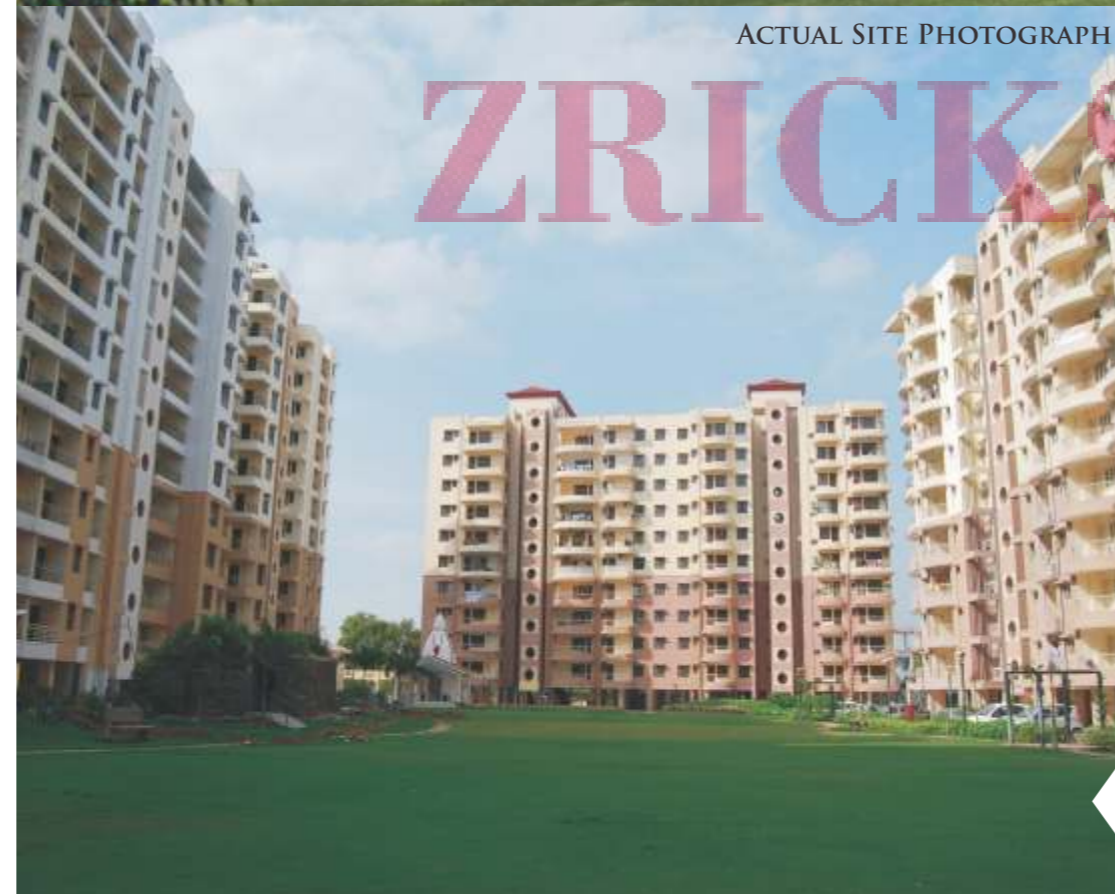


Area calculation will be done as actual measurement at the time of possession



ACTUAL SITE PHOTOGRAPH

KRISH MALL



ZRICKS.COM

KRISH  
VATIKA

Located in Bhiwadi on Alwar by-pass, a luxurious complex of 404 homes, Phase I of Krish Vatika was launched in 2007 and delivered in first quarter of 2011. Construction of phase II started in 2011 and delivered in first quarter of 2013.

ABOUT  
*Bhiwadi*

Tucked away on the edge of the NCR, is a city that is fast growing and offers contemporary lifestyle without the hustle bustle of the NCR. This city of Bhiwadi has become a center piece of attraction not only for all major corporates and industrial establishments but also equally so for home seekers. It offers enhanced connectivity to Delhi via the NH8, urban planning, world-class internal infrastructure, excellent schools (Modern Public School, St. Xavier School, Manipal Starex School, Sagar International School, DPS Rewari), state of the art hospitals, luxurious hotels (Country Club Resort and Heritage Village and Tree House), myriad recreational facilities (Classic Golf Course, Wet & Wild Resort, BIG Cinemas, SRS Cinemas, Rotary club, Lions club) and a robust financial infrastructure. Bhiwadi is NCRs most convenient and affordable suburb and is a city of choice for millions. The city provides a comfort zone to those who wish to escape the chaos and live a quality life with their loved ones.

ZRIC





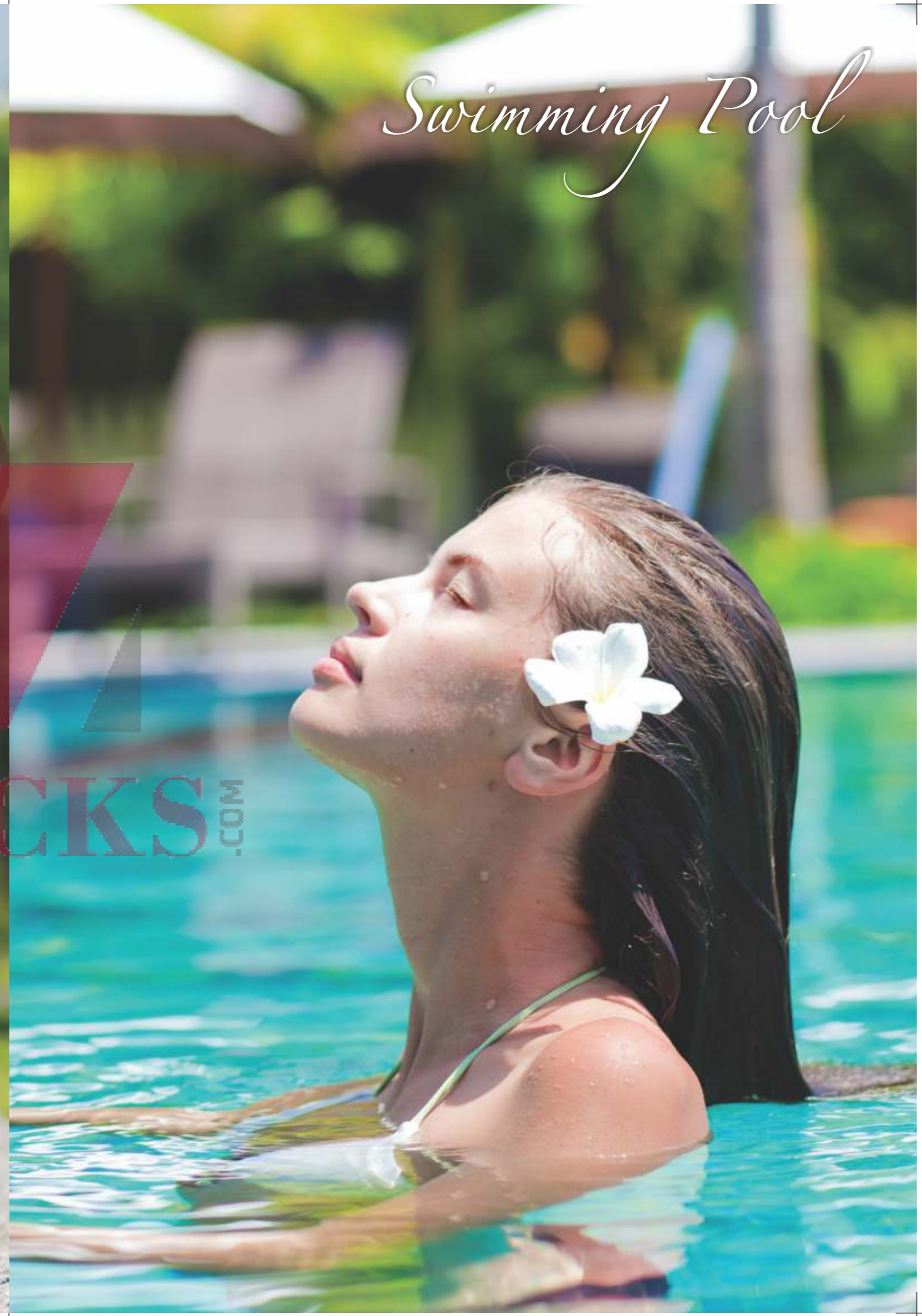
There is a place, not so far away, where luxury is no longer confined to the few. Families fulfill their desire to live an opulent life with their loved ones. Where comfort & extravagance are given and the little joys of life unfold in a magical way, everyday. Where love blossoms in the openness and you enjoy every moment of it. Welcome to Krish Icon, where thoughtfully designed homes combined with world-class amenities give a new meaning to luxury living. Get ready to live in style, because now luxury is for everyone.



FEATURES



*Jogging Tracks*



*Swimming Pool*

ZRICKS.COM

Note: Facilities may change as per the advise of architect.



*Children  
Park*



*Ample  
green area*

ZRICKS.COM



24 HOUR ELECTRICITY  
GATED COMPLEX



CCTV & 24 HOUR SECURITY  
24 HOUR WATER



# SITE MAP

## LEGEND

- A. TOWER-A 1 BHK + 1 TOILET (S+14)
- B. TOWER-B 2 BHK + 1 TOILET TYPE-2 & 3 (G+14)
- C. TOWER-C 2 BHK + 1 TOILET TYPE-1 & 2 BHK+2T (G+13)
- D. TOWER-D 3 BHK + 2 TOILET (G+14)

## UNIT LEGEND

- 1. ENTRY/EXIT
- 2. GREEN BUFFER ZONE
- 3. RAMP
- 4. PARKING
- 5. JOGGING TRACK
- 6. SWIMMING POOL
- 7. CLUB
- 8. COMMERCIAL
- 9. KIDS PLAY AREA
- 10. GREEN





# SPECIFICATIONS



*Kitchen*

GRANITE COUNTER TOP WITH STAINLESS STEEL SINK.  
GLAZED TILE DADO UP TO 2' HEIGHT.

## STRUCTURE

Earthquake resistant, RCC frame structure.

## FLOORING

Vitrified Tiles in Drawing, Dining and Bedrooms. Anti skid ceramic tiles in Kitchen, Toilet and Balcony.

## WALLS

Oil Bound Distemper of Reputed brand.

## DOORS/WINDOW

Wooden Door Frame & Window Frames.

## BATHROOMS

Ceramic Glazed tiles up to 7' height with sanitary fixtures. C.P. fittings of reputed brand, Provision for hot and cold water.

## ELECTRICALS

Conduit Copper wiring, Modular Switches. Power Back up of 750 watt (AC Power Back up optional).

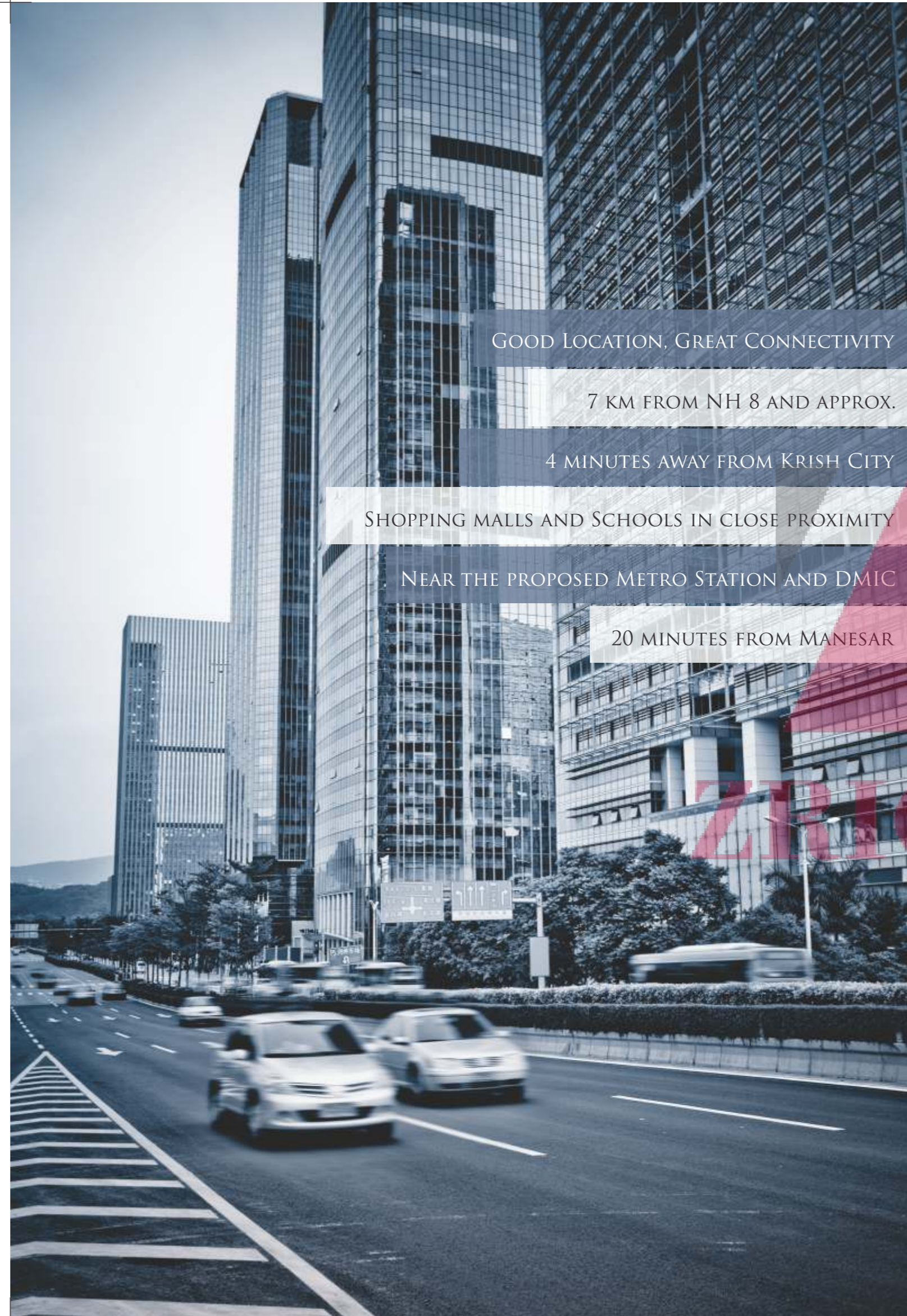
## EXTERIOR FINISH

Acrylic exterior emulsion/Textured paint.

## ELEVATORS

High quality elevator in each block.

Note: Specifications may change as per the advise of architect.



GOOD LOCATION, GREAT CONNECTIVITY

7 KM FROM NH 8 AND APPROX.

4 MINUTES AWAY FROM KRISH CITY

SHOPPING MALLS AND SCHOOLS IN CLOSE PROXIMITY

NEAR THE PROPOSED METRO STATION AND DMIC

20 MINUTES FROM MANESAR



Map not to scale. Time estimated after completion of master plan road

# LOCATION MAP

FLOOR PLAN



1 BHK + 1 TOILET - 555 SQ.FT.



2BHK + 1TOILET - 820 SQ. FT. TYPE 1