

Marketing Off.: 24 Ground Floor, Vipul Agora, MG Road, Gurgaon (HR.) **Phone :** 0124-4375176 **Mob.:** 95607-14446 / 47

Site Off.: Main Alwar Bypass Road, Near Power Grid, Bhiwadi, (Raj.) **Phone :** 01493-513172 **Mob.:** 9694003100 / 3200

Email: info@krishvatika.com **Website :** www.krishgroup.org www.krishvatika.com

For prompt response sms KG to 57575

This is not a legal document. All floor Plans, Site Plan, Specifications, Amenities, Facilities, Photos and Perspective View are tentative in nature and are subject to revision

Krish City
BHIWADI
Phase - II

Where the green vicinity freshens your breath !

ZRICKS.COM

Falcon





Beyond Sky, Touching Lives

Leaving behind most of the reputed names in real estate industry, Krish Group today is a known name for construction of high quality residential complexes and commercial & shopping centers in Bhiwadi. With the enriched business experience of decades and humble beginning in the real estate, our foundations are deeper than the obvious and on that deeper foundation, we are touching more skies with our every new project. The group has already constructed around 9.4 Lacs sqft of commercial and residential spaces and is aiming to double over the next two years. Krish Group is known for their innovative designs, well-planned amenities and prime locations. The company's top management is sensitive towards understanding the client's requirements and maintains good relations with them.

The Group's financial standing is very strong which boasts of its Zero (0) Debt capital structure and abundant reserves with a huge Land bank in its kitty. The group has very good relations and standing with their bankers, clients, vendors and associates. The group has been able to harness the potential of a select team of highly talented and well-trained

professionals. The group is taking new leaps under the dedicated and dynamic leadership of Mr. S. K. Singhal, who in the past has earned a good reputation in the field of finance & Mr. Sunil Agarwal, who has mastered the trade of cement and steel.

Within the little stint of few years in real estate, Krish Group has changed something beyond skylines, they have changed the customers attitude and perception towards quality, timeliness and thus touching their lives.

Investment

It has been proved with the past track record that investment in real estate in Bhiwadi makes great business sense. The presence of all the corporates in the neighborhood with a fine blend of civil amenities makes investment in Bhiwadi, the RIGHT CHOICE to make. Bhiwadi has delivered handsome returns to those who saw the opportunity and invested in property here. The prices have risen many fold and are expected to follow the trend in future as well with more and more MNCs coming to the city. To cite an example, the Honda Car Plant has announced to provide employment to 6000 employees by 2016 which means that Honda alone will occupy around 3000-4000 flats. This will raise the demand of flats and the prices will be on peak.

So don't miss this Golden Opportunity and invest in Bhiwadi NOW !!!



Bhiwadi... The Right Destination

my neighbours
my friends
my companions

Where your neighbours are flocks of birds,

Where the nature exists in its true self,

and you can discover the true meaning of lifetime togetherness.

A world of its own that cannot be described but can only be experienced.

Unlike the life in a metro city which is full of confusion, the life in smaller cities gives a harmonious lifestyle where nature and luxury blend together. One such city is Bhiwadi.

Bhiwadi is the fastest growing industrial town in the outskirts of Metro City Delhi. The prime industrial town of NCR and Rajasthan, "Bhiwadi" comprises of 4 industrial areas, viz, Bhiwadi, Chopanki, Khushkhera and Kahrani. The area is spread over approx. 5300 acres and at present around 2500 industries are operational. Some very big industries like Gillette, Bausch & Laumb, Honda Siel small car plant, Honda 2 wheeler Plant, Shree Cement, Lafarz, Orient Craft, Kamdhenu Steel, Rathi Steel,

Jaquar, Pepsi, Saint Gobain are already a part of this industrial cluster.

Apart from business and manufacturing, the infrastructure available here is also up to the standard of a big city. Bhiwadi is well connected with NH-8 (Delhi-Jaipur Highway), NH-71B, SH-25 (Alwar-Bhiwadi Road) and Rewari Sohna Road. Rewari Railway Junction is only 20 minutes away, Manesar is 20 minute drive, Gurgaon is 30 minutes, while it takes only 1 hour to Domestic and International Airport of Delhi. All in all well-connected township of Bhiwadi keeps you in touch with the world without the noise and pollution of a metro city.

Bhiwadi can boast of its ample facilities and civil amenities. Residential sector includes various housing projects like Ashiana Village, Ashiana Aangan, Konark Oasis, Krish Vatika, Krish City apart from Housing Board, UIT and Bhagat Singh Colony. A fairly good number of health care facilities which includes Private Clinics & Hospitals / Nursing Home & Govt. hospitals are available. Shopping Complexes and Malls are also in adequate & many more coming. Classic Golf Course, Wet & Wild Resort, Country Club Resort and Heritage Village and Tree House, are in proximity too. The upcoming Multiplexes include BIG Cinemas, SRS Cinemas etc.

The reputed Rotary and Lions club too are present in the city. Some well organised educational institutions like Modern Public School, St. Xavier School, Manipal Starex School, Sagar International School, DPS Rewari are to name a few. Almost all premier Banks like Axis, HDFC, ICICI, SBI, IDBI, SBBJ, PNB, OBC, BOB, Yes Bank, Kotak Mahindra, Allahabad Bank, ING Vysya etc. have their branches in Bhiwadi. Hotels, restaurants and other recreational facilities are also available here.



Perspective View of Krish Vatika



Actual Site Photograph of Krish Vatika

Krish Vatika Phase - I & II offers very spacious, luxurious, multistory apartments fully integrated with modern amenities and lifestyle features with Bhiwadi's most beautiful and largest landscape garden. Recreation facilities provided in the Krish Vatika are unique and most ideal such as Indoor Badminton Hall, Billiards & TT Room, Sauna and Steam Bath, Jacuzzi, Swimming pool etc.



Krish Mall is the first Approved Commercial Complex of the region, situated in the centre of the third largest industrial hub of the country where business activities are on the boom. Krish Mall offers Showrooms, Food Court, Restaurant, Shops, Studio Apartments, Offices and Service Apartments, Club, Gym etc. It is the dawn of a new era of commercial expansions in Bhiwadi. The mall is on the verge of completion and the possessions will be offered soon.

Our Ongoing projects



Krish City is a benchmark for an affordable yet luxurious ultra modern living at a wonderful location in lush green surroundings. In addition it also provides School, Commercial Center, Parks etc. to its residents. This kind of living at such an attractive cost makes Krish City, The Right Choice. The possessions of Phase I will be offered soon.



Krish City Phase-II and III are now just Krish City Phase-II

The right choice

The right address

The right lifestyle

The foundation of Krish City Phase-I was based on the foundation of our determination to provide a modern and luxurious lifestyle at the most affordable cost and thus set a benchmark which we think that our group has successfully achieved. Now its time to see a bigger dream with a firmer determination to provide one of the biggest, ultra modern and yet most affordable township of Bhiwadi so that every resident feels that he resides away from a city even being within a city. We wish to give them a pollution

free environment and lush green spaces. A place where the mornings start with the rising sun and the birds singing outside and the evening tiredness is driven away by the fresh, green and silent surroundings. And thus we shifted our foundation to Krish City Phase-II on the dream aspiration of our customers who made Phase-I a huge success. Better amenities & Smarter facilities at Krish City Phase-II make it *the right choice* with *the right address* for *the right lifestyle*.

Where the green vicinity freshens your breath !!!

The heartwarming living awaits you ...

G + 4 (With Lift)

1 / 2 / 3 BHK Apartments

Krishna
B H I W A D I
City
Phase - II

ZRICKS.COM

2 / 3 BHK Apartments

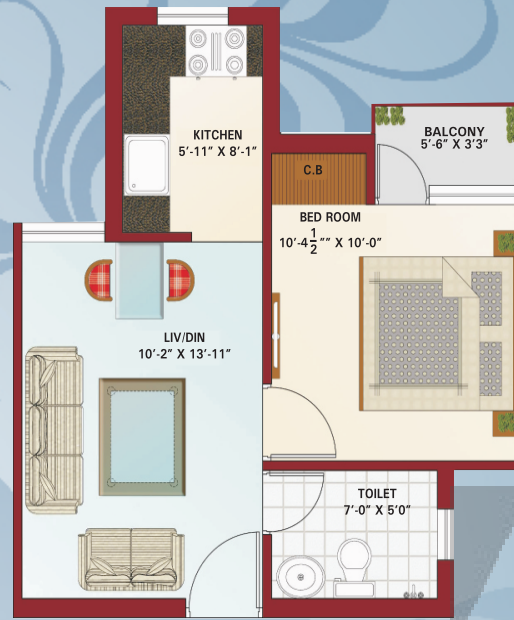
S+13
(With Lift)



DAFFODIL (Super Built-up Area Approx. 800 Sqft.) 2 BHK



SATIN (Super Built-up Area 790 Sqft.) 2 BHK



LILLY (Super Built-up Area 485 Sqft.) 1 BHK



ROSE (Super Built-up Area Approx. 605 Sqft.) 1 BHK



ZENIA (Super Built-up Area 860 Sqft.) 2 BHK



WIND FLOWER (Super Built-up Area 975 Sqft.) 3 BHK



PRIME ROSE (Super Built-up Area 800 Sqft.) 2 BHK



PRIME ROSE PREMIUM (Super Built-up Area 815 Sqft.) 2 BHK



VENUS (Super Built-up Area 1010 Sqft.) 3 BHK



Specifications

G + 4 and S + 13

FLOOR

Drawing/Dining - Vitrified Tile, Bed rooms - Ceramic Tile

Toilet/Kitchen - Anti skid Ceramic Tile

KITCHEN

Pre-polish stone platform with stainless steel sink,

2' High Dado above the platform

TOILET

Good quality sanitary wares & CP fitting

Chinaware with matching wall tiles

DOORS / WINDOWS

Hard wood/Pressed Steel Door & window frames.

Flush Doors & Glazed window shutters

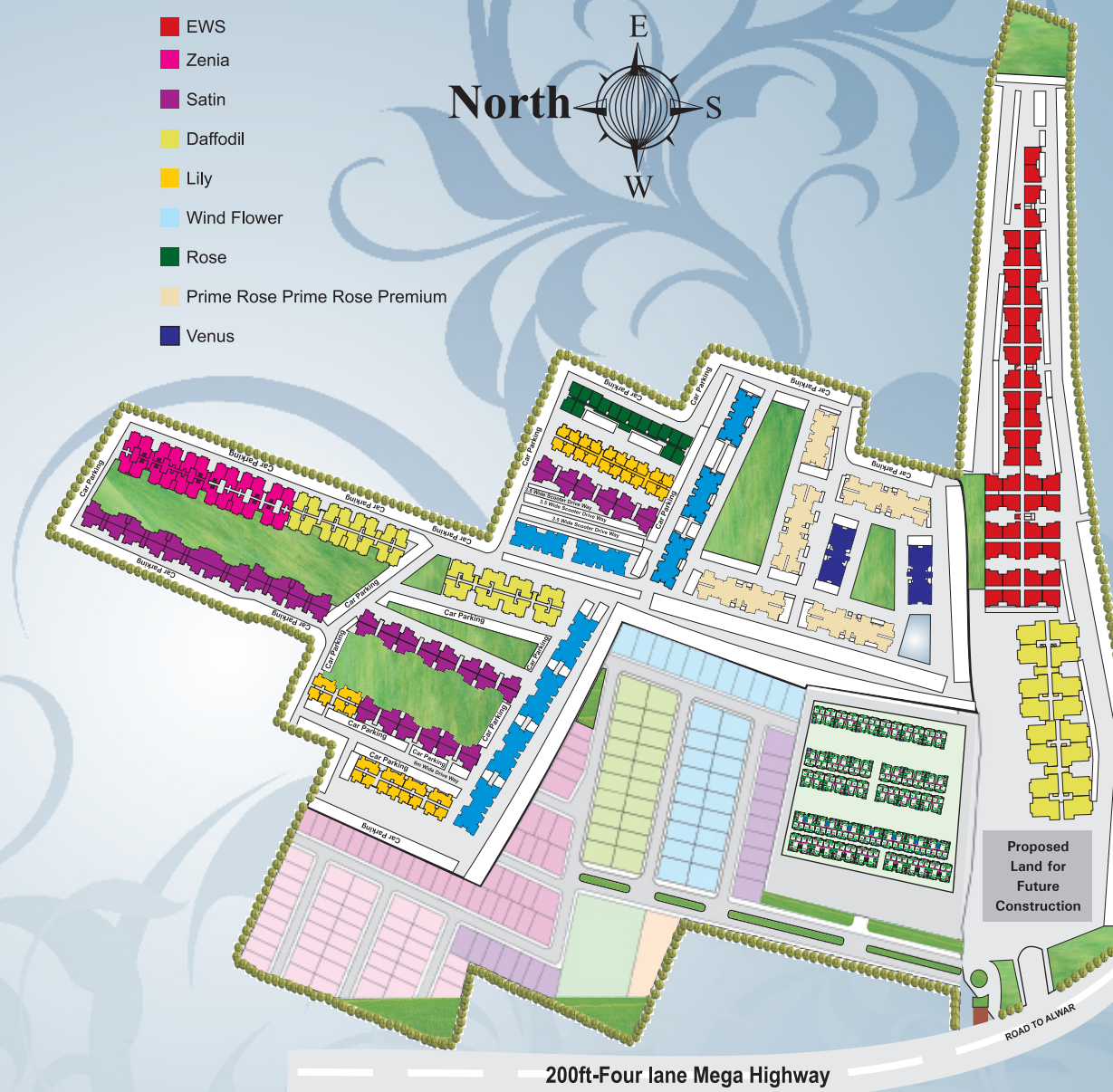
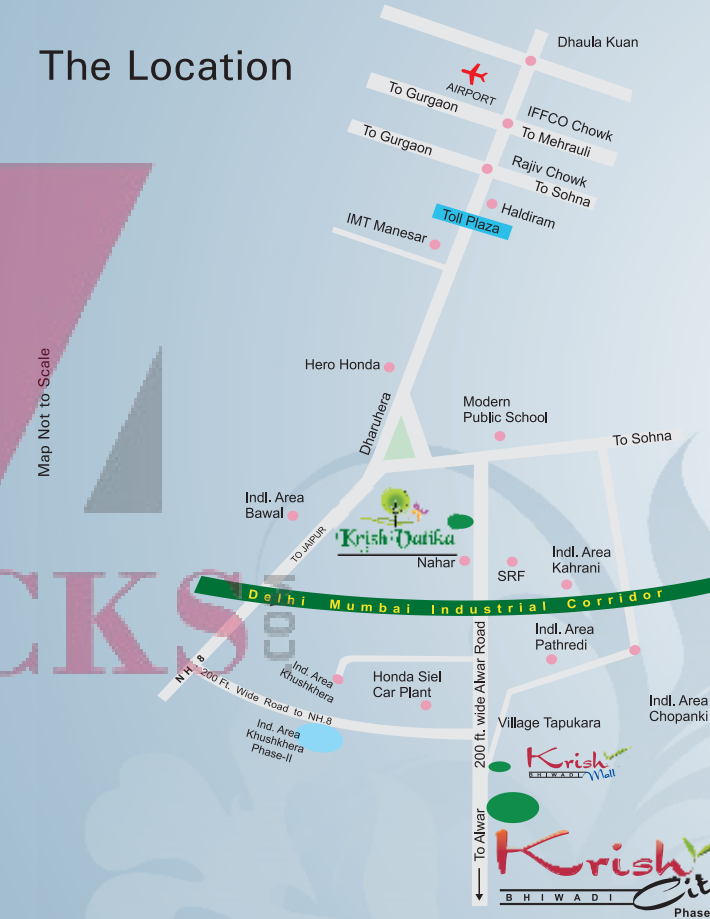
ELECTRICAL

Concealed conduiting copper wiring with TV point

Facilities

- Gated complex of high boundary walls and concertina wires.
- Two tier security system comprises of sufficient security guards & CCTV.
- Adequate power back-up round the clock.
- Ample water supply round the clock.
- Wide road networks.
- Parks with beautiful landscaping.
- Vaastu & eco friendly complex.
- Lift Facility
- Medical & Education facility within the complex.
- Shopping area for daily needs within the complex.
- Garbage collection & disposal.
- STP & Rain water harvesting.
- Road/Street lights.
- Covered drainage system.
- Maintenance of Park, Electricity & Plumbing etc. by skilled staff.

The Location



Site Plan may Change as per advise of architect.

Krish City is situated in the center of the big four industrial areas of Bhiwadi, Kahrani, Khushkera & Chopanki. It is situated adjacent to a well established town of Tapukera & right on the State Highway No.25 (Alwar-Bhiwadi Road), which has taken the shape of a 4 lane Mega Highway. The Sate Highway no. 25 emerges from the NH - 71B at Bhiwadi and goes upto Alwar. More than 10000 people are living in village Tapukara. The project is on the walking distance from Honda Siel car, Lafarge, Saint Gobain and Shree Cement etc. & 10 minutes from all the above mentioned industrial areas. The central location & all around connectivity makes "Krish City-II" *The right choice*