

Location Map



Not as per scale

ZRICKS.COM



# ACECITY

2/3 BHK APARTMENTS  
GREATER NOIDA (WEST)

*the finest expression of  
a lush lifestyle*



where nature  
surrounds you



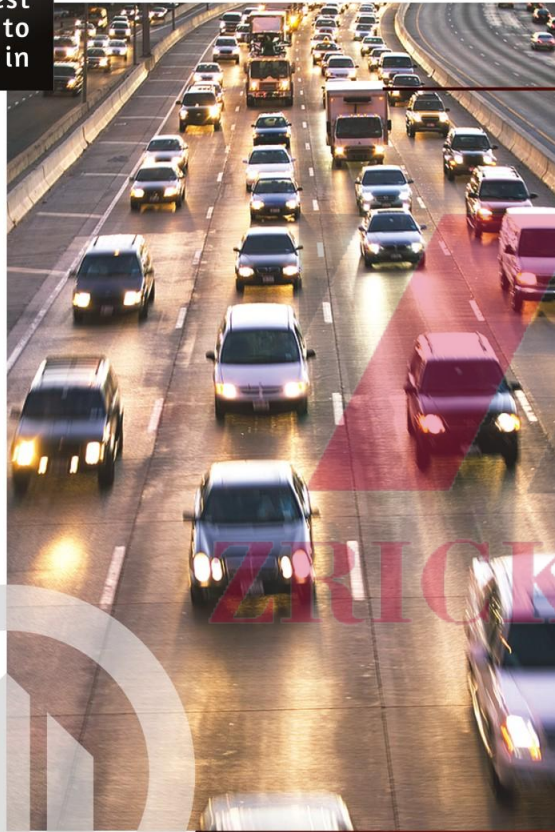
*Just the sight of pristine greens is enough to brighten up the heart, rejuvenate the mind or inspire the soul. Such has been the effect of nature since time immemorial. For those who know the dewy touch of fresh morning grass or the solitary walks on winding pathways or the peaceful shadows of the blossoming trees will love to call Ace City home. The tinge of jasmine and daffodils in the air, the light twigs falling on the ground, the crush of falling leaves and the faraway cry of lovely bird... living in Ace City absolutely feels like living amidst nature. So come, experience nirvana, experience Ace City.*

ZERICKS.COM



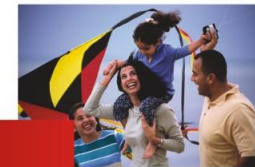
  
**ACECITY**  
20 BHK APARTMENTS  
GREATER KODIA (WEST)

the choicest  
location to  
live in



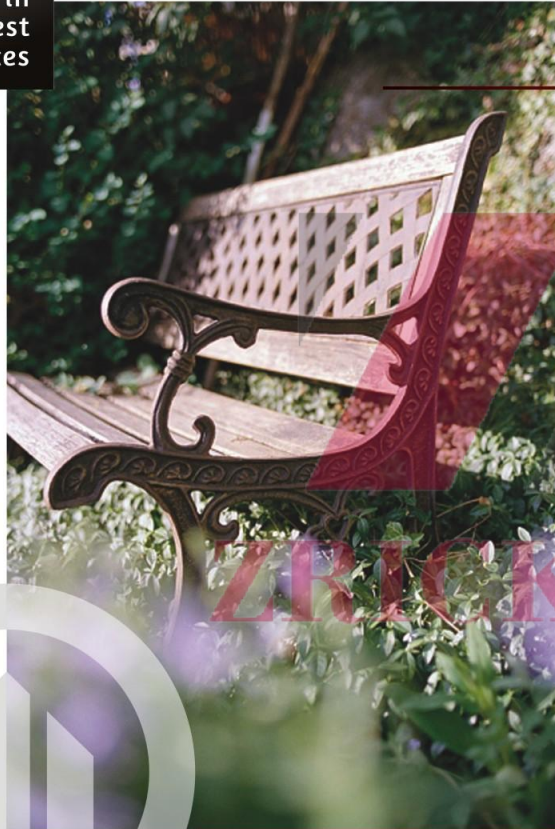
*Ace City is most advantageously located at Gr. Noida (West) - the new cynosure of elite living. Buzzing with innovative developments and infrastructure and laced by premium residential, commercial, industrial and retail projects Gr. Noida (West) is the place to be. It's totally active with resourceful developments and is very well connected to major landmarks of Delhi, Noida and Ghaziabad. So residing here is a boon as the residents will get easy access to prominent schools, hospitals, recreation hubs and of course work places in NCR.*

- Adjoining Balak Inter College
- 8 kms. from Noida City Centre Metro Station
- 7 kms. from Sai Mandir
- 8 kms. from Fortis Hospital
- 13 kms. from Kalindi Kunj
- 15 mins. drive from sector-18



  
**ACECITY**  
20 BHK APARTMENTS  
GREATER NOIDA (WEST)

**luxuriate in  
the finest  
conveniences**



- Ample Car Parking
- Walk Way
- Club/Health SPA
- Swimming Pool
- Kid's Pool
- Water Body
- Jogging Track
- Amphitheater
- Badminton Court
- Basketball Practice Court
- Tennis Court
- Children's Play Area
- Sandpit
- Skating Rink
- Gazebo
- Yoga Pavilion/Meditaion



  
**ACECITY**  
20 BHK APARTMENTS  
GREATER KODA (WEST)





jazz up  
your spirit



*Access amusement after routine, refreshment after work and fun-filled gossip with friends after formal conversation throughout the day with an array of recreational activities spread out at the clubhouse in Ace City. Enjoy reading snuggling upon comfortable chairs. Those passionate about fitness, there is a state-of-the-art Gymnasium with most modern exercise equipment. And seekers of idle pleasure can laze the cozy lounge area. The evenings here come alive with party games, mini-club shows, couple contests, disco nights or birthday and anniversary celebrations.*

ZPICKS.COM



  
**ACECITY**  
2/3 BHK APARTMENTS  
GREATER KODA (WEST)



focus on  
every small  
detail



#### FLOORING

- Laminated wooden flooring in Master bedroom
- Vitrified tiles in drawing/dining/bedrooms and kitchen
- Combination of ceramic/antiskid tiles in toilets and balcony

#### DOORS & WINDOWS

- External doors and windows made of UPVC/Powder Coated Aluminium
- Internal Hardwood frames with flush doors

#### KITCHEN

- Granite Top on working platform
- Stainless steel sink
- Ceramic tiles 2' above working platform

#### TOILET

- Ceramic tiles up to 7'
- Standard Bath fittings
- Hot and Cold water arrangements

#### INSIDE WALL FINISH

- Wall Putty with OBD

#### EXTERNAL FACADE

- Exterior in superior paint finish

#### ELECTRICAL

- Copper wiring in concealed PVC conduits
- Sufficient light and power points
- Provision for TV, Telephone points in living room and all bedrooms

#### SUPER STRUCTURE

- Earthquake resistant R.C.C. frame structure

#### NOTE

- The colour and design of the tiles can be changed without any prior notice.
- Variation in the colour and size of vitrified tiles/granite may occur.
- Variation in colour in mica may occur.
- Area in all categories of apartments may vary up to +3% without any change in cost, however, in case the variation is beyond +3% charges are applicable.



  
**ACECITY**  
2/3 BHK APARTMENTS  
GREATER KODIA (WEST)

imparting  
values  
to spaces



*ACE Builder, a renowned name in the field of real estate in Delhi NCR, is credited with providing dream homes to many happy families since 2005. Utmost professionalism and great honesty are the two watch words at Ace. The intense urge for relentless innovation prompts the company to provide buildings made out of latest technologies and robust engineering. Its fervor for innovation has propelled ACE to set new trends and benchmarks of architectural excellence in the real estate industry. Having been the name behind more than one thousand luxurious apartments, the emphasis of ACE on quality has paid the company rich returns, the most important of them being the trust of its customers.*

ZRICKS.COM



**a**  
**ACEGROUP**  
fulfilling ACEpirations



our  
landmarks



*Come to the heart of Greater Noida west, sector- Techzone 4 and step inside ACE Aspire to know what ACE Megastructure has planned for its discerning residents. Eye-pleasing design heartfelt space and mind boggling facilities. The 2/3 bedroom premium apartments are tailor-made for luxury seekers, where the inhabitants will cherish all the pleasures either within the campus or at steps away from the campus.*

**ACEASPIRE**  
2/3 BHK APARTMENTS  
GREATER NOIDA WEST



*At the heart of Greater Noida, Zeta sector-1 lies Platinum- a luxurious paradise. With eye-pleasing design, heartfelt space and mind boggling facilities, the 2, 3 and 4 bedroom premium apartments are tailor-made for luxury seekers. Here the inhabitants will cherish all the pleasures of contemporary living within the campus. Coming in at a reasonable price Platinum is strategically located and in proximity to the major commercial hubs from Delhi NCR.*




**Platinum**  
Fully Developed Sector-Zeta-1, Greater Noida  
2/3/4 BHK Apartments

**a**  
**ACEGROUP**  
fulfilling ACEpirations

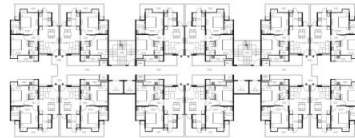
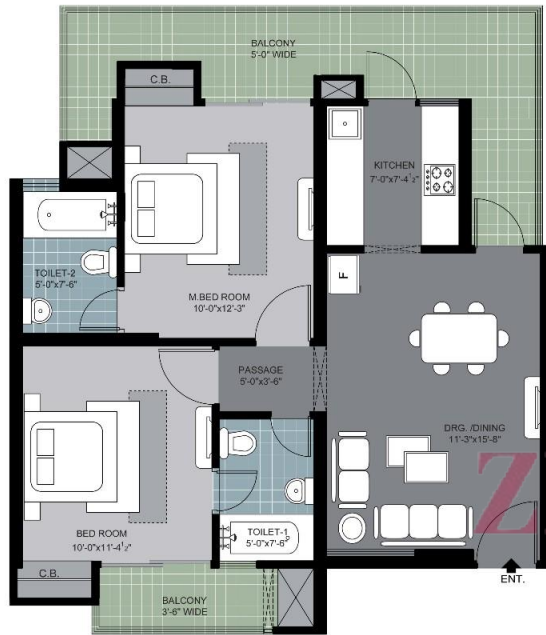


Legend

1. Main Entrance
2. Exit (Out)
3. Guard House
4. Fountain
5. Road
6. Parking
7. Walk Way
8. Greens
9. Club/Health SPA
10. Swimming Pool
11. Kid's Pool
12. Water Body
13. Jogging Track
14. Amphitheater
15. Badminton Court
16. Basketball Practice Court
17. Tennis Court
18. Children's Play Area
19. Sandpit
20. Skating Rink
21. Gazebo
22. Yoga Pavilion/Meditation
23. Ramp to the Basement Parking
24. Commercial Complex

-  2 BHK (Tower-A-to-D & H)  
2B+Ground+26
-  2 BHK+Study(Tower-E & I)  
2B+Ground+24
-  3 BHK(Tower-F & G)  
2B+Ground+24

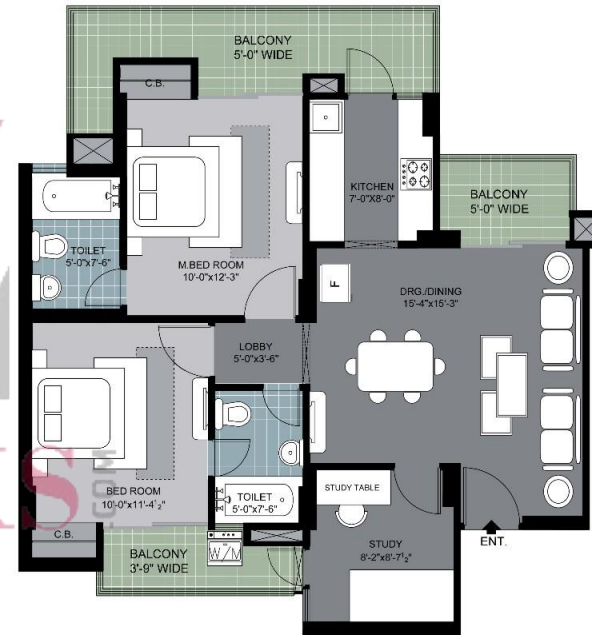
Floor Plan



**2 BHK (Tower: A to D & H)**  
Super Area = 1080 sq. ft.

- Drawing Room & Dining Lounge with attached balcony
- Two Bedrooms with attached balcony
- Kitchen with attached balcony
- Space for cupboard in Bedroom
- Two Toilets with accessible shafts
- Two balconies

Floor Plan

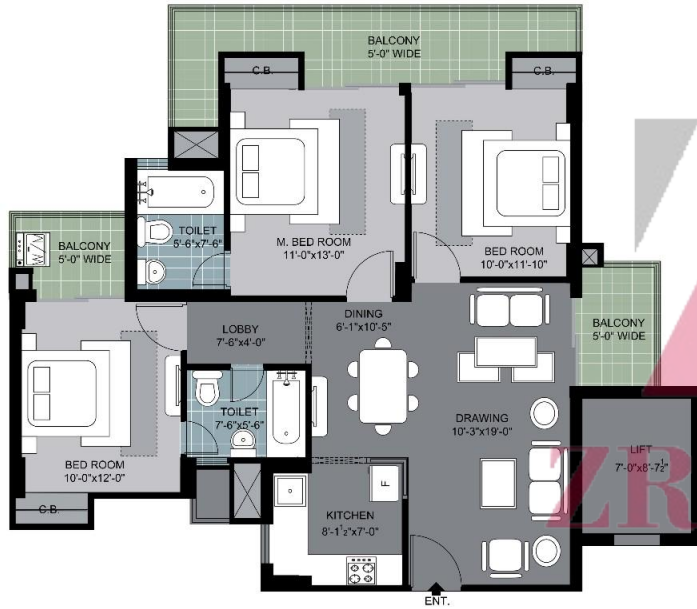


**2 BHK + Study (Tower: E & I)**  
Super Area = 1310 sq. ft.

- Drawing Room & Dining Lounge with attached balcony
- Two Bedrooms with attached balcony
- Study Room with attached balcony
- Kitchen
- Space for cupboard in Bedroom
- Two Toilets with accessible shafts
- Three balconies



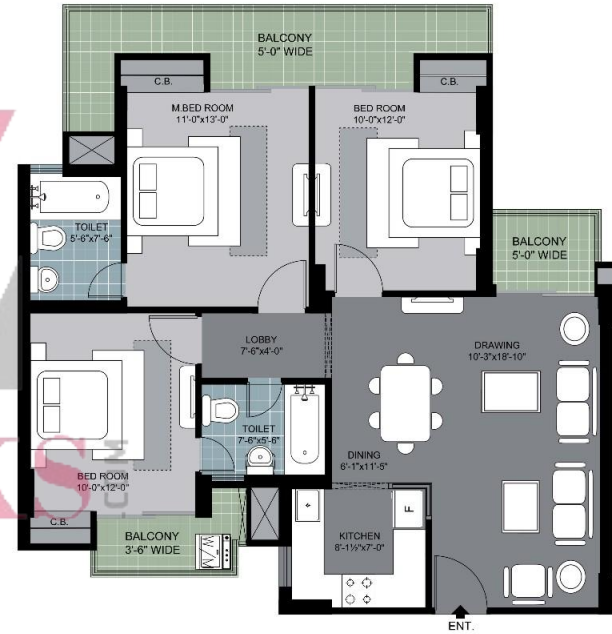
Floor Plan



**3 BHK (Tower: F)**  
Super Area = 1530 sq. ft.

- Drawing & Dining with attached balcony
- Three Bedrooms with attached balcony
- Kitchen
- Space for cupboard in Bedroom
- Two Toilets with accessible shafts
- Three balconies

Floor Plan



**3 BHK (Tower: G)**  
Super Area = 1530 sq. ft.

- Drawing & Dining with attached balcony
- Three Bedrooms with attached balcony
- Kitchen
- Space for cupboard in Bedroom
- Two Toilets with accessible shafts
- Three balconies