

Comfort Homes at Bhiwadi

EXCLUSIVITY

REDEFINED

ZRICKS.COM  
ashiana  
treehouse residences  
COMFORT HOMES

# Exclusive

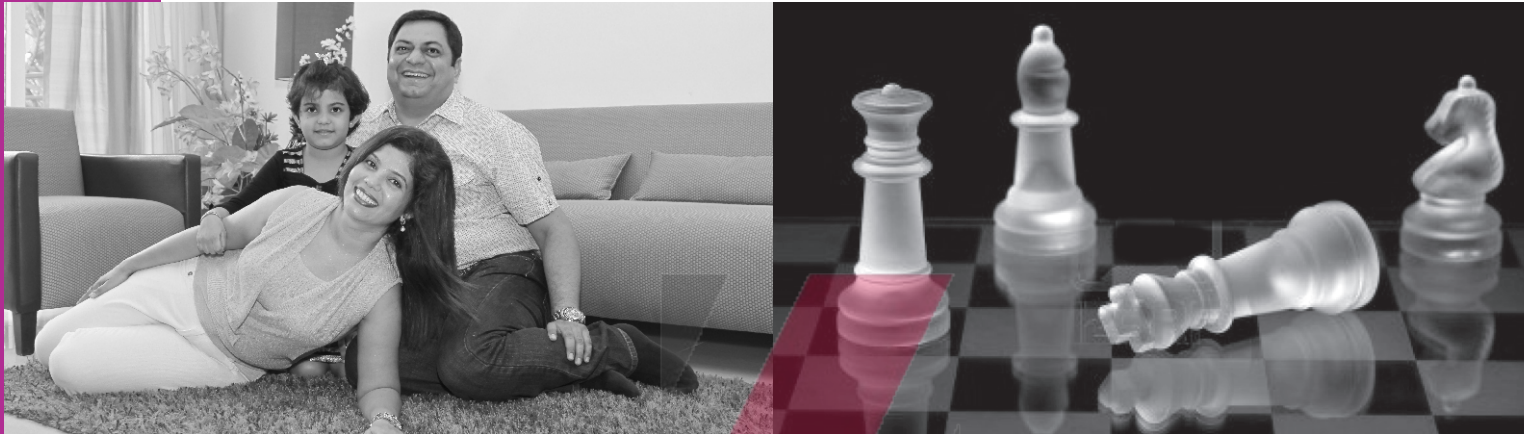
Have you ever wondered if your home is as exclusive as your tastes? You have an amazing life that inspires you and others around you. Your home should always express the beauty, creativity and power of your life with the way you live.

Yes, Ashiana Treehouse Residences is built to capture the lifestyle that matches your need for an exclusive home.

Designed for a suitable contemporary and luxurious lifestyle, Ashiana Treehouse Residences will define your arrival to the top echelons of Bhiwadi.

Step into a well deserved exclusive lifestyle!

# Selective



Ashiana Treehouse Residences at Bhiwadi, is meant only for a selective few. With only 36 homes, Ashiana Treehouse Residences will define your status in the elite circles of Bhiwadi. Convenient, comfortable, luxurious, rich and yet subtle, Ashiana Treehouse Residences represent the pinnacle of your life. Yes, this is a position that cannot be shared with everyone.

Welcome to Ashiana Treehouse Residences - only for the selective few. Make your master move and show the World that you have arrived.

# Privileged



- Fully loaded Treehouse Club & Spa, which has facilities like restaurants, bar, billiards, card-rooms, gym, squash.
- Pamper yourself at the exclusive Spa with steam and sauna
- Shop at the ground floor shopping arcade
- A part of the terrace will have a secure kids play area and ultra modern gym.

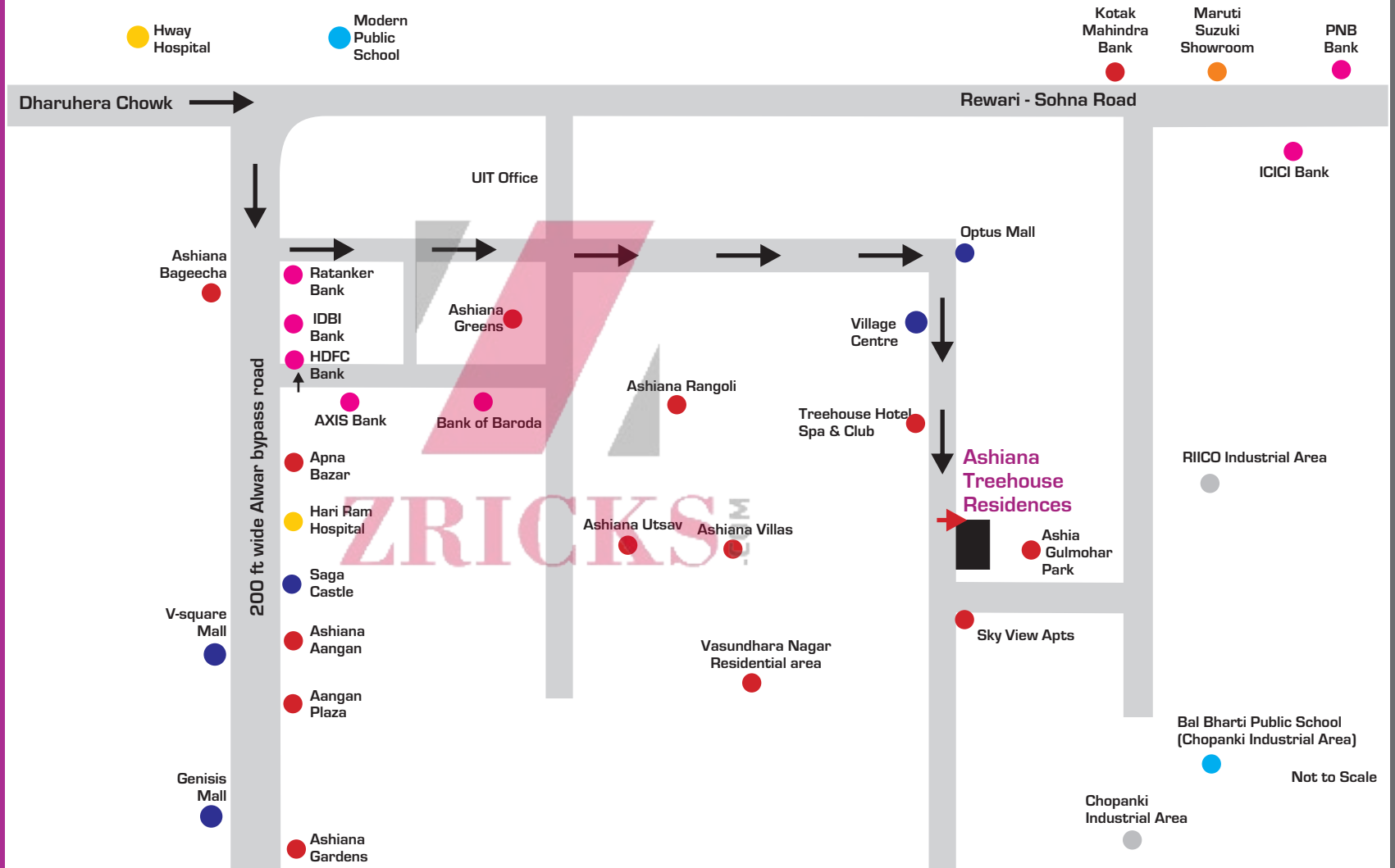
**Discover many more when you step into its world.**

# Exceptional



- Only 36 highend exclusive apartments
- 4 BHK of 3307 sq.ft. & 5 BHK of 3775 sq.ft. spacious apartments
- Modular kitchen
- Split ACs in drawing/dining, living room & all bedrooms
- Secure basement parking
- Membership of Treehouse Club & Spa
- Power back - up of 10 KVA

# Convenient



Map not to scale

# 4 BHK floor plan

Super Built-up Area: 3307 sq. ft. (307.23 sq. mts.)

(Built-up Area = Super Built-up Area - 18%)

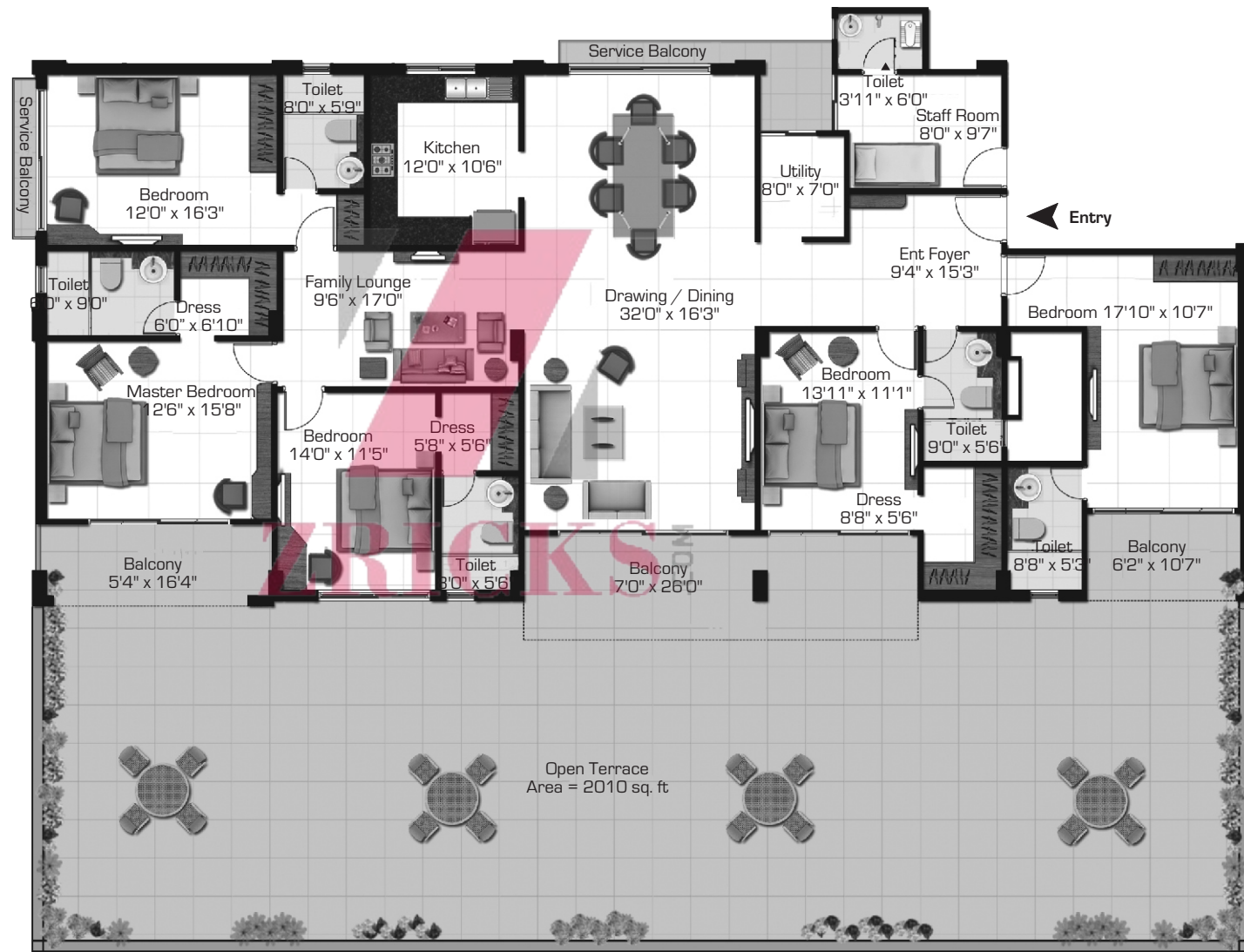
Open Terrace is available on 2nd floor in two flats only.



**Legal Note:** Accessories shown in the layout plan such as furniture, electrical appliances, cabinets etc. are indicative and not a part of the sale offering.

# 5 BHK floor plan

Super Built-up Area - 3775 sq.ft. (350.71 sq. mts.)  
(Built-up Area = Super Built-up Area - 18%)



**Legal Note:** Accessories shown in the layout plan such as furniture, electrical appliances, cabinets etc. are indicative and not a part of the sale offering.



# Specifications



## STRUCTURE

Earthquake resistant RCC frame structure as per the design of structural consultant

## WALLS FINISH

Internal

POP in plumb & high quality washable plastic emulsion paint of specific shade from reputed brand as per consultant's designs

External

Exquisitely designed classical exteriors finished in acrylic/textured paint of reputed brand

Cornices

POP cornice as per architect's design in drawing/dining & all Bedrooms.

## FLOORING

Drawing/Dining

Double charged vitrified digital tiles

Bedrooms

Double charged vitrified digital tiles

Balconies

Ceramic Tiles

## TOILETS

Walls

Ceramic tiles up to a height of 7.5 feet

Flooring

Ceramic tiles

Fittings

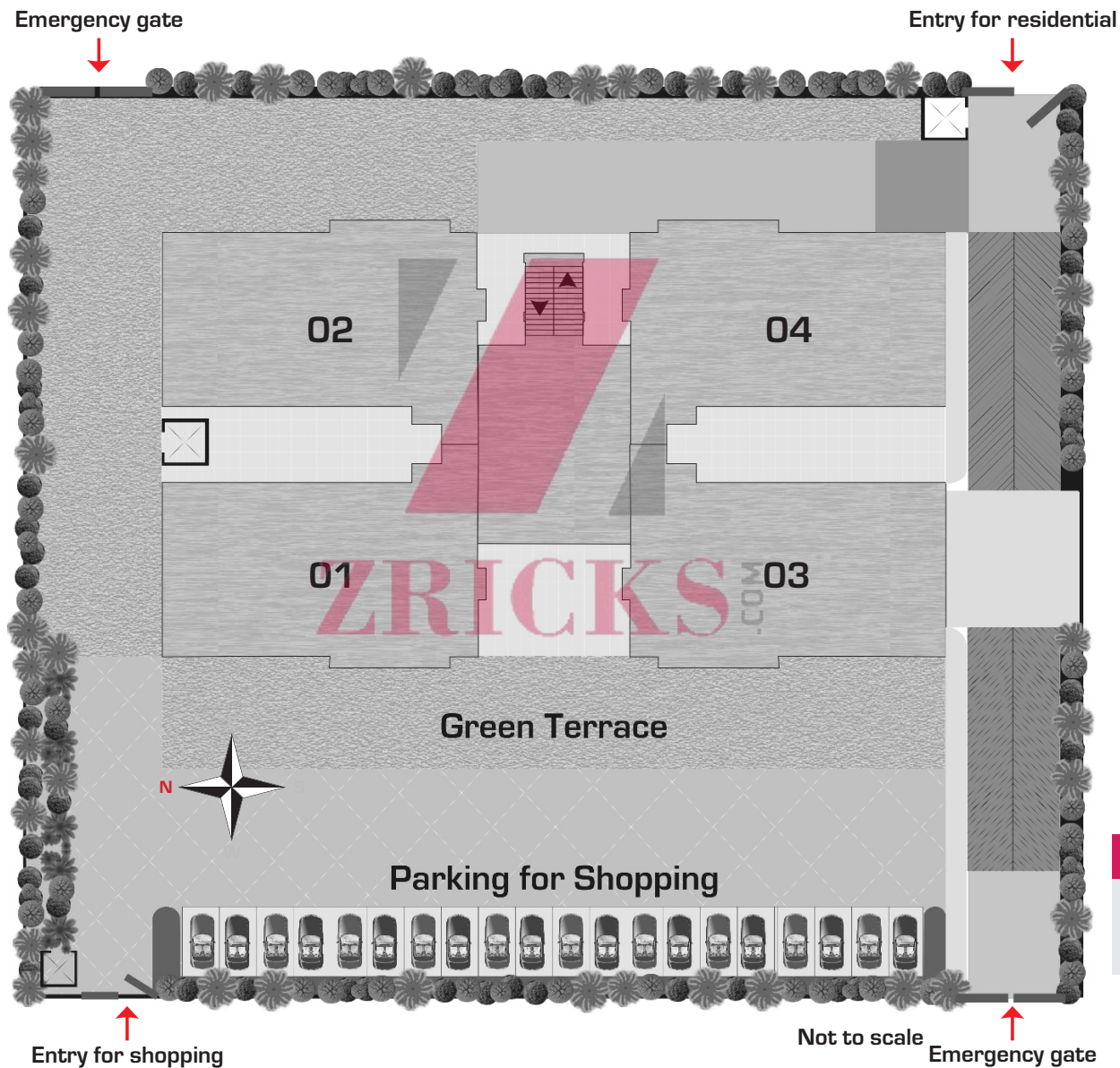
Wash basin with granite counter top or counter type wash basin, geyser, exhaust fan, single lever fitting, wall hung WC's with concealed cistern, towel rail, vitreous white sanitary ware of reputed company & health faucet in all toilets. Glass partition & rain shower in master toilet only.

# Specifications

<b>KITCHEN</b>	Flooring Platform & cabinet	Digital tiles Modular kitchen, working platform in granite with stainless steel kitchen sink with double bowl and drain board as per architect's design
	Wall	2 ft. ceramic tiles dado above working platform with electric chimney, geyser & provision for RO
<b>WINDOWS</b>		Powder coated / anodized aluminum or UPVC sliding windows with 4mm thick float glass
<b>DOOR FRAMES</b>		7'6" galvanized steel frame enamel painted in pleasing shade
<b>DOORS</b>	Main Door	35 mm moulded skin door with mortice lock & 2 coats of synthetic enamel paint in all doors. Magic eye in main door only
	Handles	Lever type brass/casted zinc handles with mortice lock
<b>ELECTRICAL</b>	Fittings Wiring	Modular electrical switches with sockets and fan regulators All electrical wiring in concealed conduits with copper wires, convenient provision and distribution of light and power plugs
<b>WATER SUPPLY</b>		Water distribution in the complex will be through overhead tanks
<b>GENERATOR</b>		10 KVA power back-up in each unit with power back-up to common areas
<b>TELEPHONE / TV</b>		Socket points in all rooms
<b>LIFTS</b>		Two stainless Steel finish automatic lifts with generator back-up
<b>STAIRCASE</b>		Flooring combination of tiles and stone
<b>AIR-CONDITIONING</b>		2 split A/C in drawing/dining, 1 split A/C in living room and 1 split A/C in each bedroom
<b>OTHER FACILITIES</b>		Provision for DTH and washing machine point with water inlet and outlet at a convenient location
<b>STAFF ROOM &amp; TOILET</b>		Flooring of ceramic tiles, geyser & IWC with PVC cistern

**Note :** All specifications are subject to variation and modification as decided by Company/Architect.

# Site layout



SQ.FT.	TYPE	Nos.
3775	5 BHK	02
3307	4 BHK	34

Note: Site-layout is tentative and is subject to variation & modification as may be decided by the architect/Company

# Contact us



Ashiana Housing Ltd.

Bhiwadi : 4th Floor, Village Centre, Vasundhara Nagar, Bhiwadi (Raj.)

T: (01493) 515 615, M : 9610446566

Head Office : 304, Southern Park, Saket District Centre, Saket

New Delhi - 110017

Ph : 011-4265 4265

Web : [www.ashianahousing.com](http://www.ashianahousing.com)

Disclaimer : This brochure is not a legal document. It only describes the Conceptual plan (not to scale) to convey the intent & the purpose of Ashiana Treehouse Residences