

Inspired by the past. Eyes on the future.

CAPITAL
ATHENA
2/3/4 BHK PREMIUM APARTMENTS
G. NOIDA (WEST)



A masterpiece by *Architect*
Hafeez Contractor



Revel in the splendour



Carrying forward the legacy of classic Architectural traditions, Capital Athena is situated at Greater Noida West. Embodying a regal lifestyle, Capital Athena raises the bar of luxury, and boasts facilities, the likes of which will be the first of their kind in Greater Noida (West).

**CAPITAL
ATHENA**
2/3/4 BHK PREMIUM APARTMENTS
G. NOIDA (WEST)



Capital Athena, designed by world renowned architect, Hafeez Contractor, is all set to become an architectural marvel and a landmark. A fine amalgam of ancient regal lifestyle whilst meeting the demands of modern life, it lends itself beautifully to contemporary needs and expectations.

Spacious rooms, aesthetically designed building interiors, wide-open spaces, well ventilated apartments; each and every corner of Capital Athena has been planned and designed to perfection. After all homes fit for connoisseur simply cannot afford to have crammed interiors.



*Feast
the delight*



*Enjoy the
magnificence*



*Make most
of your life*

Highlights



REFRESHING LIFE AVENUES

- Site spread across World class Sports city
- Acres of open & green spaces
- Intermittent water bodies
- Zero-traffic jogging tracks
- One of the first residential projects with Handicap friendly ramps
- Leisure Park for Senior Citizens & Children's play area
- Dedicated tot-lots
- Theme park & interactive games for children
- Exotic flower park & fruit Orchard Landscape

MATCHING MODERN ASPIRATIONS

- Private lawns for ground floor apartments.
- View of greens from each apartment.
- Main Door with 8' height & Best room sizes provided in its class.
- Best specifications available in its class.
- Designed by world renowned, award winning architect HAFEEZ CONTRACTOR.
- Vaastu-compliant layout & design by Mr. K.K. Aggarwal
- Energy efficient homes with environment friendly materials
- Well managed Solar Lighting at landscaped areas
- Earth quake Resistant Structure
- Structure by leading/ reputed professional Engineers.

CLASSIQUE-THE CLUB

- International style clubhouse with all state-of-the-art facilities
- A Swimming pool, with an exclusive ladies' pool and a kids' splash pool
- Games like Badminton, Skating rinks, Table Tennis, Billiards
- Sports facilities: Cricket Pitch, Tennis, Basket Ball etc., with coaching facilities
- State-of-the-art Gym and Fitness center with Spa and Jacuzzi
- Yoga & Meditation Centre
- Music & Dance classes run by renowned professionals



Layout Plan



Golf Course

TOWER	UNIT CATEGORY	SIZE
CA-2 to CA-4	Flat No-2,4	2600 Sq. ft
CA-2 to CA-4	Flat No-1,3	2095 Sq.ft
CA-5 to CA-7	Flat No-1,2,4,5,6,8	1060 Sq.ft
CA-5 to CA-7	Flat No-3,7	1250 Sq.ft
CA-8 to CA-11	Flat No-1,2,3	1635 Sq.ft
CA-8 to CA-11	Flat No-4	1795 Sq.ft

Plot No. G.H. 12A-2, Sector - 1, G. Noida (West)

IN-COMPLEX AMENITIES

- 100% Power back-up & 24 hour water supply
- 24X7 Multi-Tier Secured entrance to residential towers
- CCTV camera at common access points
- Separate round the clock Customer care centre
- Well managed basement parking
- Laundry services
- Special Automatic car Wash Plant
- Golf chipping and putting facilities
- Cyber Café, Business Centre & ATM
- Amphitheatre
- Large banquet and party lawns
- Medical centre & polyclinic
- Shopping centre & departmental stores inside complex
- Fine dining with elaborate kitchen and catering services
- Confectionary shop
- Beauty-salon for ladies and gents
- Rainwater harvesting

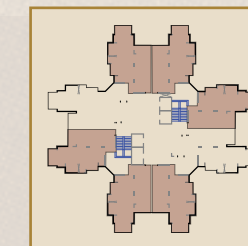


Type - 1

Saleable area - 1060 Sq. Ft.



2 Bedroom + Living Room & Dinning + Kitchen + 2 Toilet +
3 Balcony + Utility Balcony

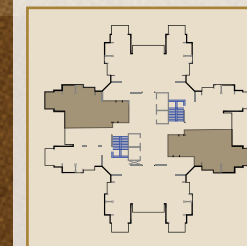


Type - 2

Saleable area - 1250 Sq. Ft.



2 Bedroom + Living Room & Dinning + Kitchen + 2 Toilet + Study +
3 Balcony + Utility Balcony

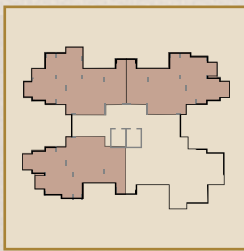


Disclaimer : While every attempt has been made to ensure the accuracy of the plans shown, all measurements, positioning, fixtures, fittings and any other data shown are an approximate interpretation for illustrative purposes only and are not to scale. No responsibility is taken for any error, omission, miss-statement or use of data shown. The company reserves the right to make changes in the plans, specifications, dimensions and elevations without any prior notice. 1 sq. ft. = 0.0929 sq. mt., 1 sq. mt. = 10.764 sq. ft, 1 ft. = 0.305 mt and 1 mt = 3.281 ft.

Disclaimer : While every attempt has been made to ensure the accuracy of the plans shown, all measurements, positioning, fixtures, fittings and any other data shown are an approximate interpretation for illustrative purposes only and are not to scale. No responsibility is taken for any error, omission, miss-statement or use of data shown. The company reserves the right to make changes in the plans, specifications, dimensions and elevations without any prior notice. 1 sq. ft. = 0.0929 sq. mt., 1 sq. mt. = 10.764 sq. ft, 1 ft. = 0.305 mt and 1 mt = 3.281 ft.

Type - 3

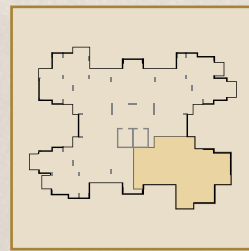
Saleable area - 1635 Sq. Ft.



3 Bedroom + Living Room & Dining + Kitchen + 3 Toilet +
3 Balcony + Utility Balcony

Type - 4

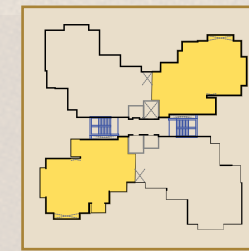
Saleable area - 1795 Sq. Ft.



3 Bedroom + Living Room & Dining + Kitchen + 3 Toilet +
3 Balcony + Utility Balcony

Type - 5

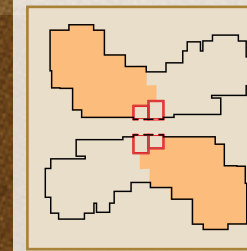
Saleable area - 2095 Sq. Ft.



3 Bedroom + Living Room & Dining + Kitchen + 3 Toilet + 3 Balcony
+ Utility Balcony + Servant Room with Toilet

Type - 6

Saleable area - 2600 Sq. Ft.



4 Bedroom + Living Room & Dining + Kitchen + 4 Toilet + 4 Balcony +
Utility Balcony + Servant Room with Toilet

Disclaimer : While every attempt has been made to ensure the accuracy of the plans shown, all measurements, positioning, fixtures, fittings and any other data shown are an approximate interpretation for illustrative purposes only and are not to scale. No responsibility is taken for any error, omission, miss-statement or use of data shown. The company reserves the right to make changes in the plans, specifications, dimensions and elevations without any prior notice. 1 sq. ft. = 0.0929 sq. mt., 1 sq. mt. = 10.764 sq. ft, 1 ft. = 0.305 mt and 1 mt = 3.281 ft.

Disclaimer : While every attempt has been made to ensure the accuracy of the plans shown, all measurements, positioning, fixtures, fittings and any other data shown are an approximate interpretation for illustrative purposes only and are not to scale. No responsibility is taken for any error, omission, miss-statement or use of data shown. The company reserves the right to make changes in the plans, specifications, dimensions and elevations without any prior notice. 1 sq. ft. = 0.0929 sq. mt., 1 sq. mt. = 10.764 sq. ft, 1 ft. = 0.305 mt and 1 mt = 3.281 ft.

Specifications

Structure	Earthquake resistant RCC structure as per Seismic Zone-with latest frame-work technique
Living/Dining	
Wall Finish	OBD paint
Flooring	Vitrified Tiles
Ceiling	OBD paint
Door	ISI Marked 32mm thick skin molded Doors
Master Bedroom	
Wall Finish	OBD paint
Flooring	Wooden Laminated
Ceiling	OBD paint
Door	ISI Marked 32mm thick skin molded Doors
Other Bedroom	
Wall Finish	OBD paint
Flooring	vitrified Tiles
Ceiling	OBD paint
Door	ISI Marked 32mm thick skin molded Doors
Kitchen	
Wall Finish	Ceramic Tiles up to 2' above working counter
Flooring	Anti Skid Ceramic Tiles
Ceiling	OBD paint
Fittings	Granite Counter, Sink with Drain board
Toilet (Master Bedroom)	
Wall Finish	Ceramic tiles in dado up to 7' high
Flooring	Anti Skid Ceramic Tiles
Ceiling	OBD paint
Fittings	White sanitary ware with EWC, CP fittings & mirror

Toilet (Other Bedroom)	
Wall Finish	Ceramic tiles in dado up to 7' high
Flooring	Anti Skid Ceramic Tiles
Ceiling	OBD paint
Fittings	White sanitary ware with EWC, CP fittings & mirror
Servant Room/Utility/Study Room	
Wall Finish	OBD paint
Flooring	Ceramic Tiles
Ceiling	OBD paint
Door	Wooden/Ply door frame with flush door
External Facade Finish	
Wall Finish	Excellent weather proof and permanent finish of pleasing shades
Others	
Balconies	Anti Skid Ceramic Tiles, External paint
External Door & Windows	Aluminum Powder Coated/UPVC
Electrical	Copper wire in PVC conduit with MCB supported circuit with adequate number of power point & lights points
Power Backup*	24 Hours
Lobbies/Corridor	Terrazzo/marble flooring, OBD paint
TV & Telephone	Provision for points in living / Drawing & Bedroom
Variation in area	± 5%
Security System	Secured gated community with intercom facility

*On demand

Location Map



Plot No. G.H. 12A-2
Sector - 1, G. Noida (West)

LOCATION ADVANTAGE

- Easy access from East Delhi, Ghaziabad, NH-24, Noida & Greater Noida
- Near FNG corridor
- 10- min drive from nearest Metro Station
- 10 mins drive from Kalindi Kunj, Delhi
- 5 kms from Sai Mandir
- 10 mins. drive from Fortis Hospital
- 10 mins drive from DND Flyway
- 10 mins drive from sec-18, Noida



*Living is an art...
...realize it at Capital Athena.*

ZRICKS.COM



H-1, A-1, Level-2, Sector-63, Noida, India - 201301
Ph.: +91-120-4533030, 4533000 • Fax: +91-120-451118
info@capitalathena.com • www.capitalathena.com
Site Office : Plot No. G.H. 12A-2, Sector - 1, G. Noida (West)