



# GULSHAN BELLINA

# Simply beautiful

Gulshan Bellina, a home so beautiful, that you can't stop falling in love with it.

ZRICKS

BEAUTIFULLY CRAFTED ② & ③ BHK APARTMENTS  
AT GREATER NOIDA WEST

 Gulshan  
HOMZ



# GULSHAN BELLINA

2 & 3 BHK @ GREATER NOIDA WEST

## Gulshan Bellina- **Redefining beauty**

A feeling so delightful that appeals to all our senses, a radiance that reflects from within, and a form that's so extraordinary that it makes one come alive. Such is the concept behind Gulshan Bellina – to bring to you an address that simply redefines beauty.

Stunningly refreshing and beautifully crafted, Bellina is the new benchmark of 'Gorgeous'. Coming up in Greater Noida West with 2 and 3 BHK options, this property will surely make you say, "Bellina, you take my breath away!"

**Get set to fall in love, with something that is, exquisitely beautiful!**

# ZRICKS

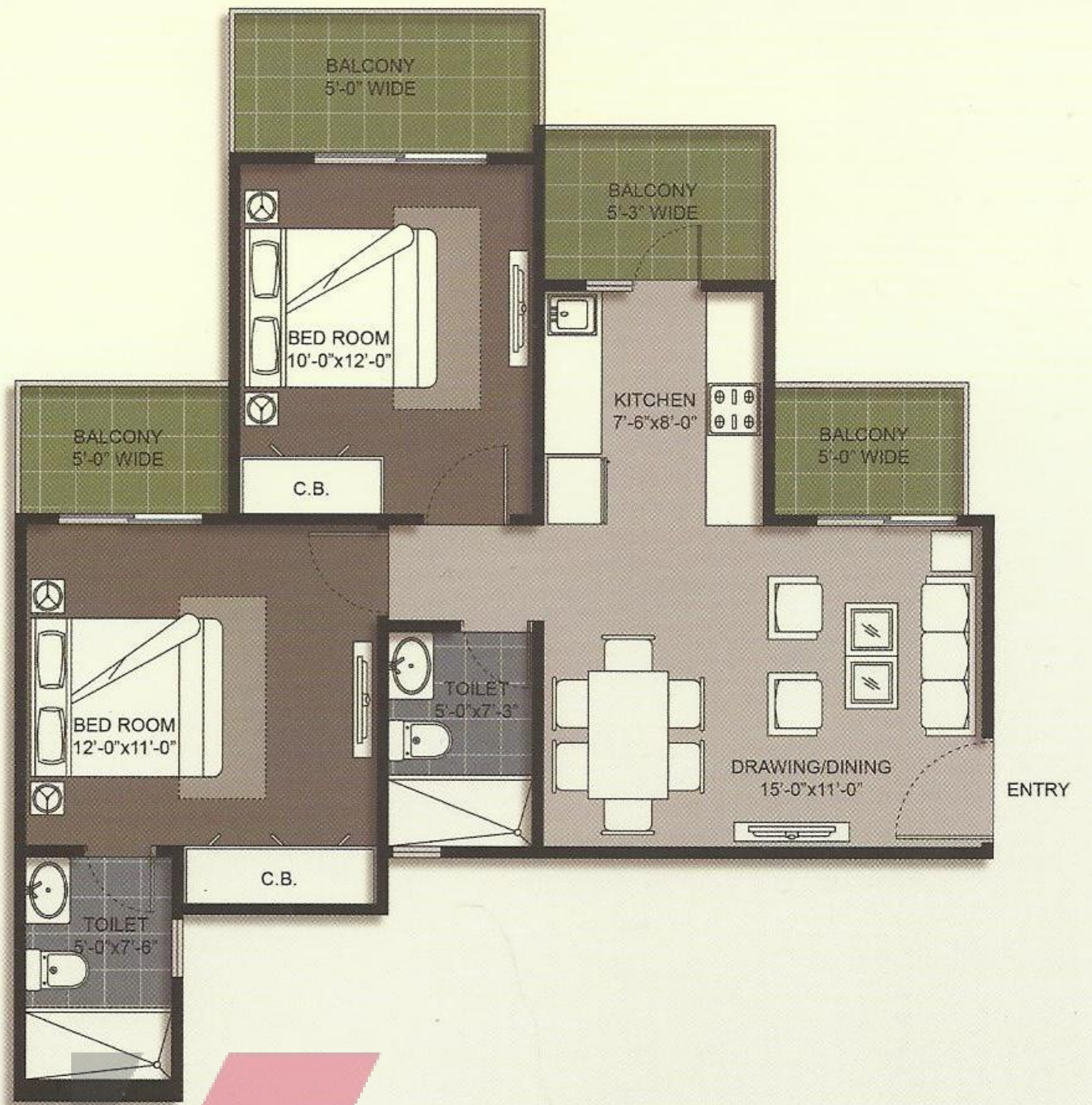
## Stunning features of Gulshan Bellina

Internet Connectivity	Jogging Track	Laundry Services
24 x 7 Security	Basketball Court ( Half Court)	Amphitheater
Provision of Intercom Connectivity	AC Gymnasium, Yoga / Aerobics centre	Kids Lounge
Customer Care Center	Special Play-pan for kids	In- Compound OPD
Rain Water Harvesting	Immaculate Landscaping	Stretcher Lifts
Swimming pool	Exclusive welcome lounge & Coffee Shop	Wheel chair for Elderly and sick
Steam/ Massage Room	AC Unisex Beauty Salon	
Indoor Games	AC Banquet	



## Type 01

**2 Bed**  
**2 Toilet**  
(1020 sq. ft.)



Disclaimer: 1 sq.mtr = 10.764 sq.ft. Tentative unit plan not to scale. \* Furniture & Fixtures shown in the layout are not a part of offering.


ZRICKS.COM



## Type 02

**2 Bed**  
**2 Toilet**  
**1 Study**  
(1105 sq. ft.)

Disclaimer: 1 sq.mtr = 10.764 sq.ft. Tentative unit plan not to scale. \* Furniture & Fixtures shown in the layout are not a part of offering.

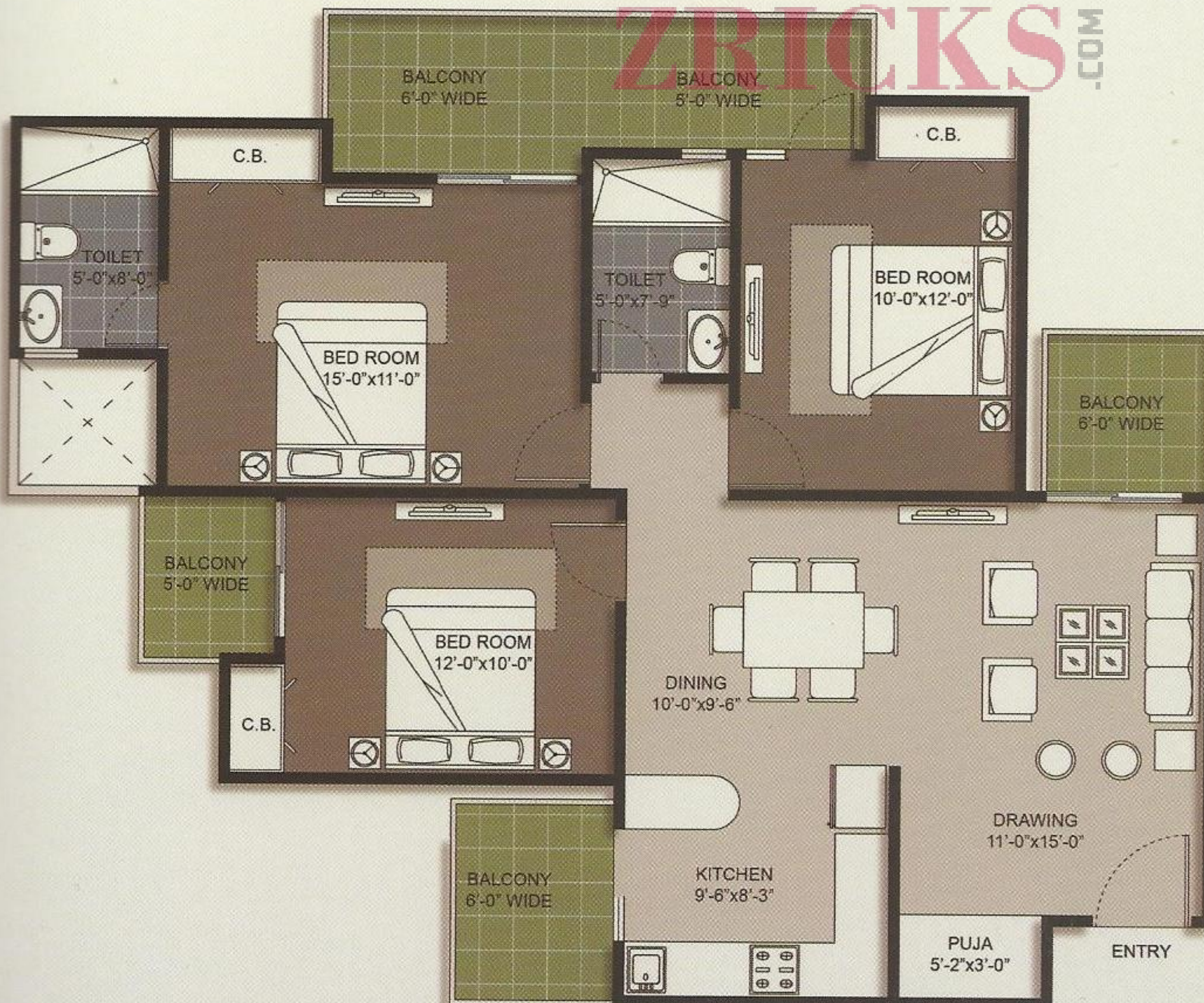
 **Type 03**


**3 Bed**  
**2 Toilet**  
 (1325 sq. ft.)



Disclaimer: 1 sq.mtr = 10.764 sq.ft. Tentative unit plan not to scale. \* Furniture & Fixtures shown in the layout are not a part of offering.

**ZBRICKS**.COM



 **Type 04**

**3 Bed**  
**2 Toilet**  
**1 Puja**  
 (1495 sq. ft.)

Disclaimer: 1 sq.mtr = 10.764 sq.ft. Tentative unit plan not to scale. \* Furniture & Fixtures shown in the layout are not a part of offering.



## Type 05

**3 Bed**  
**3 Toilet**  
**1 Study**  
(1745 sq. ft.)



Disclaimer: 1 sq.mtr = 10.764 sq.ft. Tentative unit plan not to scale. \* Furniture & Fixtures shown in the layout are not a part of offering.

# Specifications at Gulshan Bellina

## FLOORING

- Vitrified tiles in drawing, dining, bedrooms and kitchen.
- Ceramic tiles in toilets and balconies.

## DOOR & WINDOWS

- External doors & windows made of Aluminium
- Internal hardwood frames with flush doors.

## KITCHEN

- Granite top- working platform.
- Single-bowl stainless steel sink.
- Ceramic glazed tiles 2' above working platform.

## TOILET

- Ceramic floor tiles.
- Ceramic tiles up to 7' height on walls

## INSIDE WALL FINISH

- Inside wall finish with OBD.

## EXTERNAL FAÇADE

- Exterior in paint finish

## ELECTRICAL

- Copper wiring in concealed P.V.C. conduits.
- Sufficient lights and power points.
- Provision for T.V. points in living room and all bedrooms.
- Provision for video door phone.

## SUPER STRUCTURE

- Earthquake – resistant R.C.C. frame structure.

Disclaimer: This brochure is purely conceptual and not a legal offering. All rights reserved. The specifications are only indicative and some of these can be changed in consultation with the architect at the discretion of the builder.



ZRICKS



info@gulshanhomz.com | gulshanhomz.com | 9582 255 181/189

**HEAD OFFICE:** 121, Hargobind Enclave, Delhi-110092 | **CORPORATE OFFICE:** grandstreet, Plot No. 2C, Vaibhav Khand, Indirapuram, Uttar-Pradesh. | **SITE ADDRESS:** Plot No. GH-02/A, Sector-16, Greater Noida West, U.P.