



exotica  
**dreamville**  
good living within your reach  
2/3 BR apartments • Sec. 16C, Noida Extn.



ZRIKKS

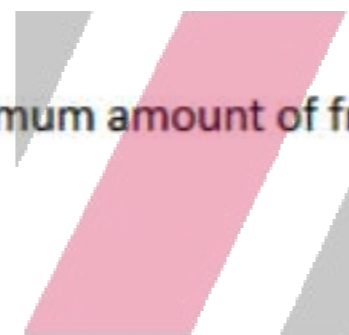


## Welcome To Exotica Dreamville

Exotica Dreamville is a premium residential project located in Greater Noida. Spread across 10 acres of highly valuable land in Greater Noida, this project offers 2 BHK and 3 BHK apartments in a variety of size configuration ranging between 920 sq. ft. and 1705 sq. ft. This project offers a host of 10,000 sq. ft. family club with recreational facilities to the residents thus ensuring that they are fully equipped to lead a wholesome, hassle-free life.

### Project USP

- Apartments spread across 15 towers
- Nearly all apartments are open on 3 sides
- Efficient utilization of space to accommodate maximum amount of fresh air and sunlight
- Round-the-clock Concierge services for residents
- A doctor and ambulance available on call
- An ATM within the complex
- Tight security
- A yoga centre and rooms for steam, sauna and spa
- A unisex salon within the complex
- A multi-purpose banquet hall
- Sports facilities include a swimming pool, Badminton court, half Basketball court, Cards Room, skating rink, Tennis court and more
- A shopping area for daily needs and conveniences
- Separate play zone for children
- A coffee shop to hangout at
- A jogging / cycling track and an Amphitheatre
- An aerobics room



ZRICKS.COM



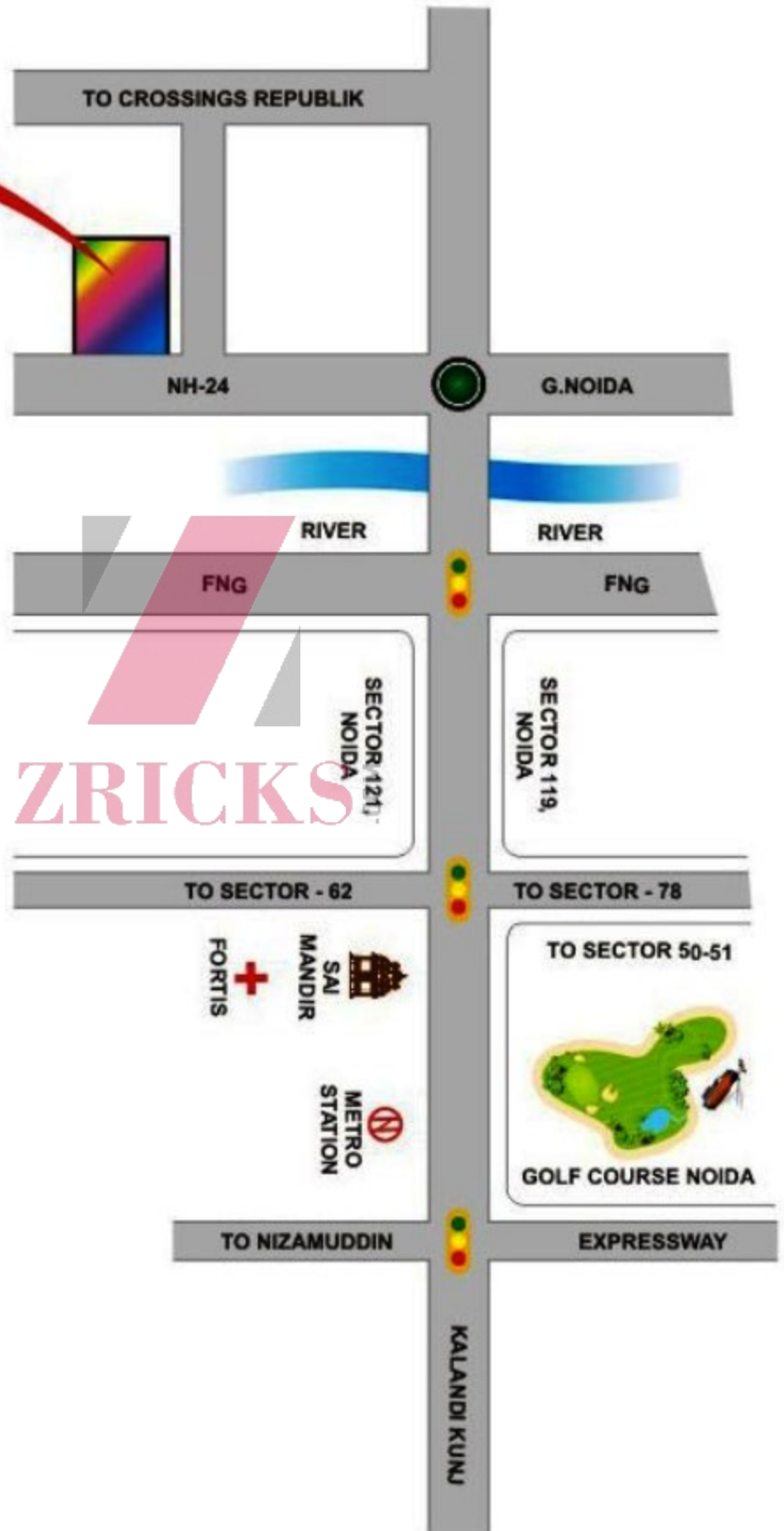
ZIRICKS.COM



ZIRICKS.COM

# location map

**exotica dreamville**  
good living within your reach  
2/3 BR apartments • Sec. 16C, Noida Extn.



ZRICKS



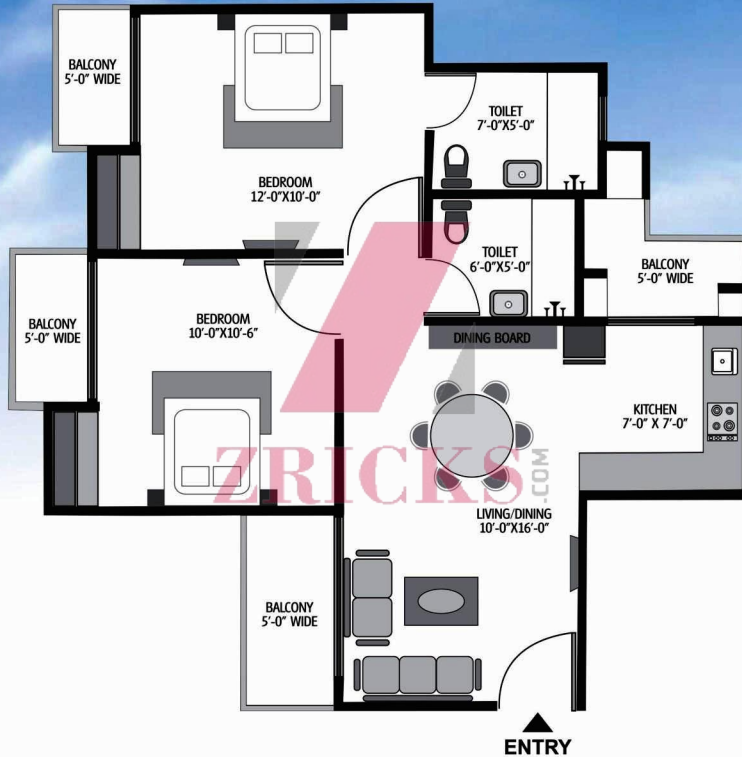
	<b>UNIT A</b> 2BHK/2T SALE AREA 920 SQ.FT.		<b>UNIT B</b> 2BHK/2T/STORE SALE AREA 1035 SQ.FT.		<b>UNIT C</b> 2BHK/2T/STUDY SALE AREA 1235 SQ.FT.		<b>UNIT D / D1 / D2</b> 3BHK/2T SALE AREA 1340 SQ.FT.		<b>UNIT E / E1</b> 3BHK/2T/STUDY SALE AREA 1705 SQ.FT.
--	--	--	---	--	---	--	---	--	--

## LEGEND:

- |                     |                            |                                      |
|---------------------|----------------------------|--------------------------------------|
| 1 MAIN ENTRY        | 8 KIDS' POOL               | 15 BADMINTON COURT                   |
| 2 WATER FEATURE     | 9 PERGOLA                  | 16 FRAGRANCE GARDEN                  |
| 3 RAMPS FOR PARKING | 10 JOGGING / CYCLING TRACK | 17 BASKET BALL COURT                 |
| 4 PAVILION          | 11 LAWN                    | 18 KIDS' PLAY AREA                   |
| 5 CLUB DROP-OFF     | 12 AMPHITHEATER            | 19 KIDS' SKATING RINK                |
| 6 CLUB / HEALTH SPA | 13 LAWN TENNIS COURT       | 20 OUTDOOR SEATING                   |
| 7 SWIMMING POOL     | 14 COMMERCIAL BLOCK        | 21 ENTRY FEATURE COLUMNS WITH LIGHTS |

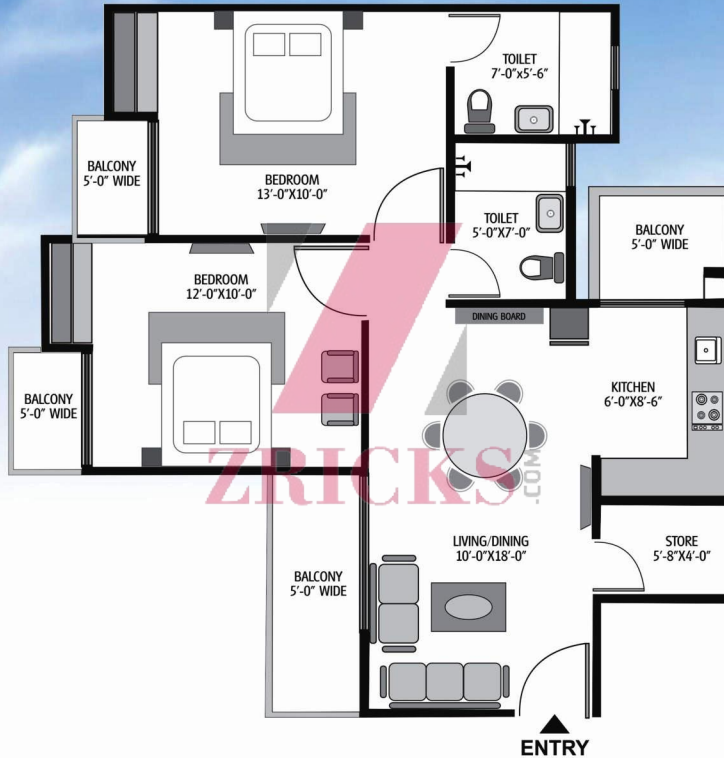
Floor Plans

**TYPE A - 2BHK/2T**  
**AREA - 920 SQ. FT.**



Floor Plans

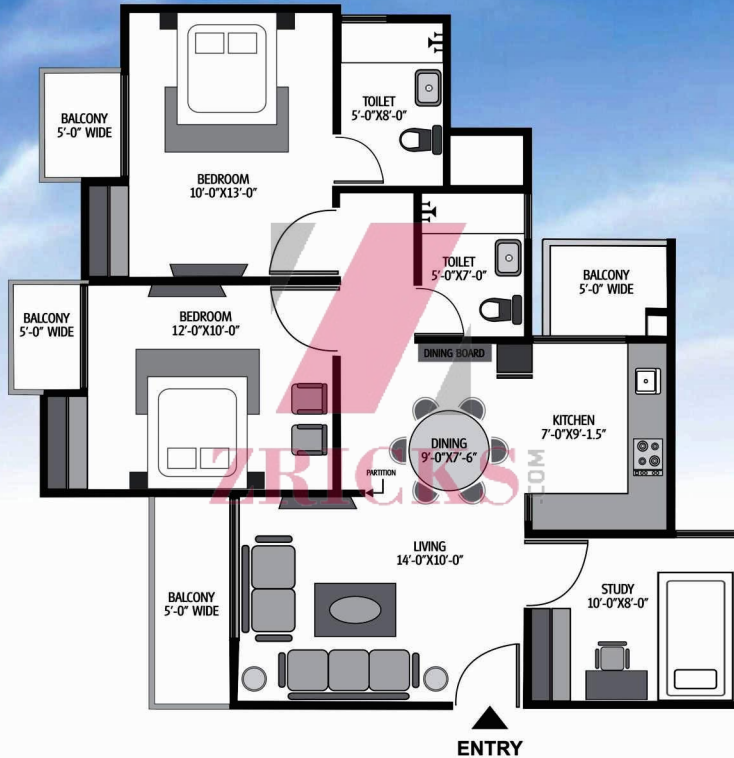
**TYPE B - 2BHK/ 2T/ STORE**  
**AREA - 1035 SQ. FT.**





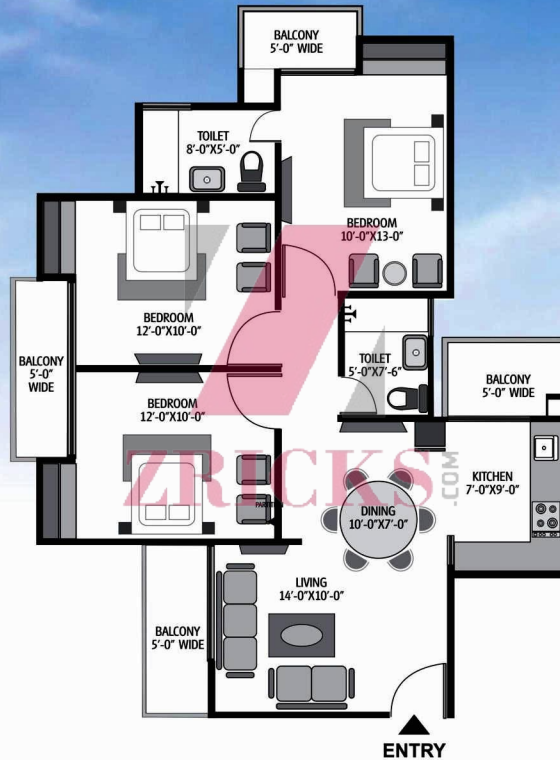
# Floor Plans

**TYPE C - 2BHK/ 2T/ STUDY**  
**AREA - 1235 SQ. FT.**



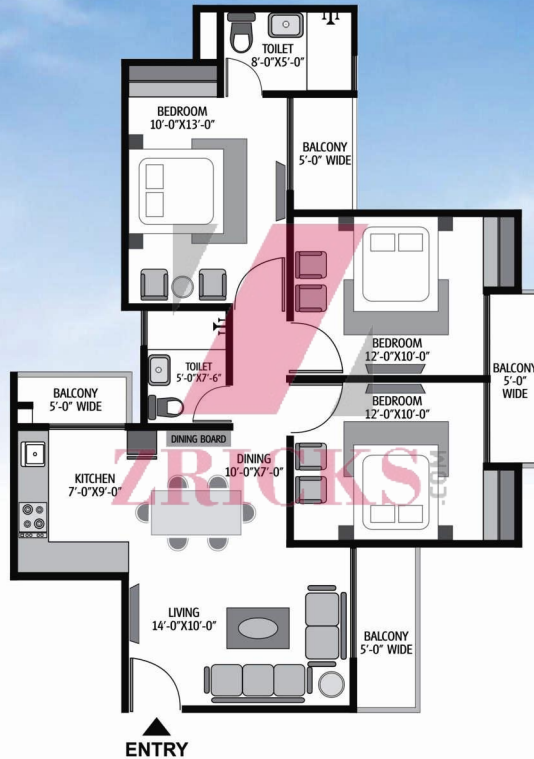
Floor Plans

**TYPE D - 3BHK/ 2T**  
**AREA - 1340 SQ. FT.**



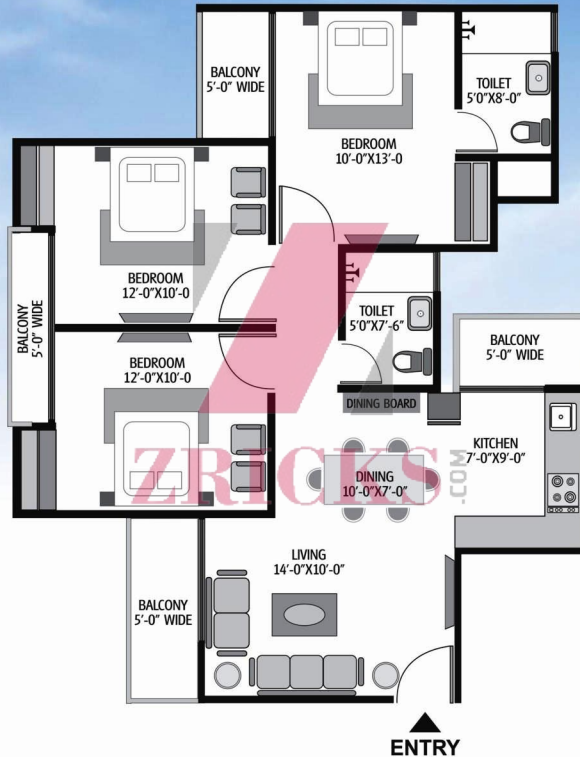
Floor Plans

**TYPE D1** - 3BHK/ 2T  
**AREA** - 1340 SQ. FT.



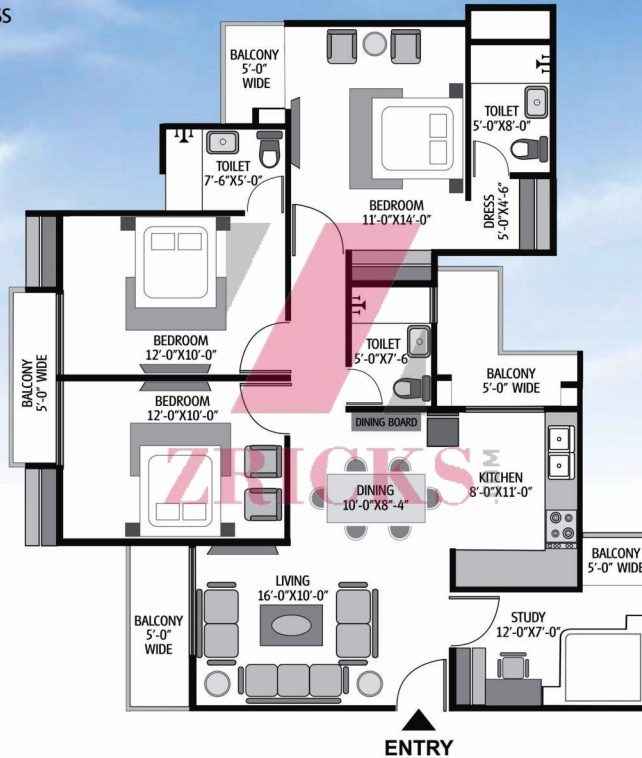
Floor Plans

**TYPE D2** - 3BHK/ 2T  
**AREA** - 1340 SQ. FT.



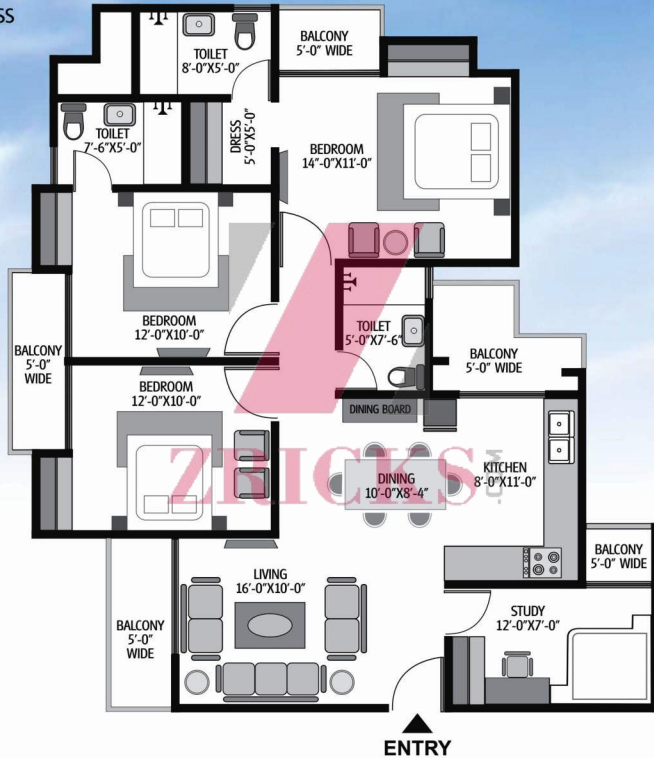
Floor Plans

**TYPE E** - 3BHK/ 3T/ STUDY/ DRESS  
**AREA** - 1705 SQ. FT.



Floor Plans

**TYPE E1-** 3BHK/ 3T/ STUDY/ DRESS  
**AREA** - 1705 SQ. FT.





unlocking the  
world of your  
dreams



exotica  
**dreamville**  
good living within your reach  
2/3 BR apartments • Sec. 16C, Noida Extn.