

PURVANCHAL'S



93/01, Sector-93, Noida.

Welcome To Purvanchal Silver City

Purvanchal Silver City is a residential project located in Sector 93, Noida, close to the Greater Noida Expressway. This project offers elegant and spacious 2 BHK, 3 BHK and 4 BHK apartments ranging in size from 1,135 square feet to 2,495 square feet in total. Silver City, Noida is going to serve up irresistible lifestyle like never before. Garnished by starters, appetisers, main course and dessert, living in Silver City will be truly a soul-satisfying experience. You can have your heart's fill with sumptuous servings of architectural excellence, landscaped brilliance and designer ambience. Purvanchal Silver City Noida is ready to move into.

Project USP

- Stringent security at all times
- Gated community in order to create an enclosed space
- Lush landscaped greens throughout the complex
- 100% power back up at all times
- Ample car parking for residents and guests
- Four sides open plot with green belt facing three sides





ZRICKS.COM



EXIT

PURVANCHAL
SILVER CITY
93/1 SECTOR 93, NOIDA (U.P.)

PARKING
AT OWNERS



ZILIKS

PURVAANCHAL
SILVER CITY
93/1, SECTOR-93, NOIDA (U.P.)









ZRICI.S.COM



ZRICKS
COM





ZIRICKS



TO EXPRESSWAY

45 M WIDE ROAD

20 M WIDE GREEN BELT

20 M WIDE GREEN BELT

45 M WIDE ROAD

20 M WIDE GREEN BELT

20 M WIDE GREEN BELT

24 M WIDE ROAD

ENTRY

24 M WIDE ROAD



A2 (G+6)

(G+6) A1

A2 (G+6)

(G+9) A3

B1 (G+9)

(G+9) A3

B1 (G+9)

(G+8) B2

B1 (G+8)

B2 (G+8)

COURT +0.90

COURT +0.90

COURT +0.90

COURT +0.90

TENNIS COURT

TENNIS COURT

UPPER LAWN +1.2

LOWER LAWN +0.600

LOWER LAWN +0.600

CLUB AND SWIMMING POOL

TRICES



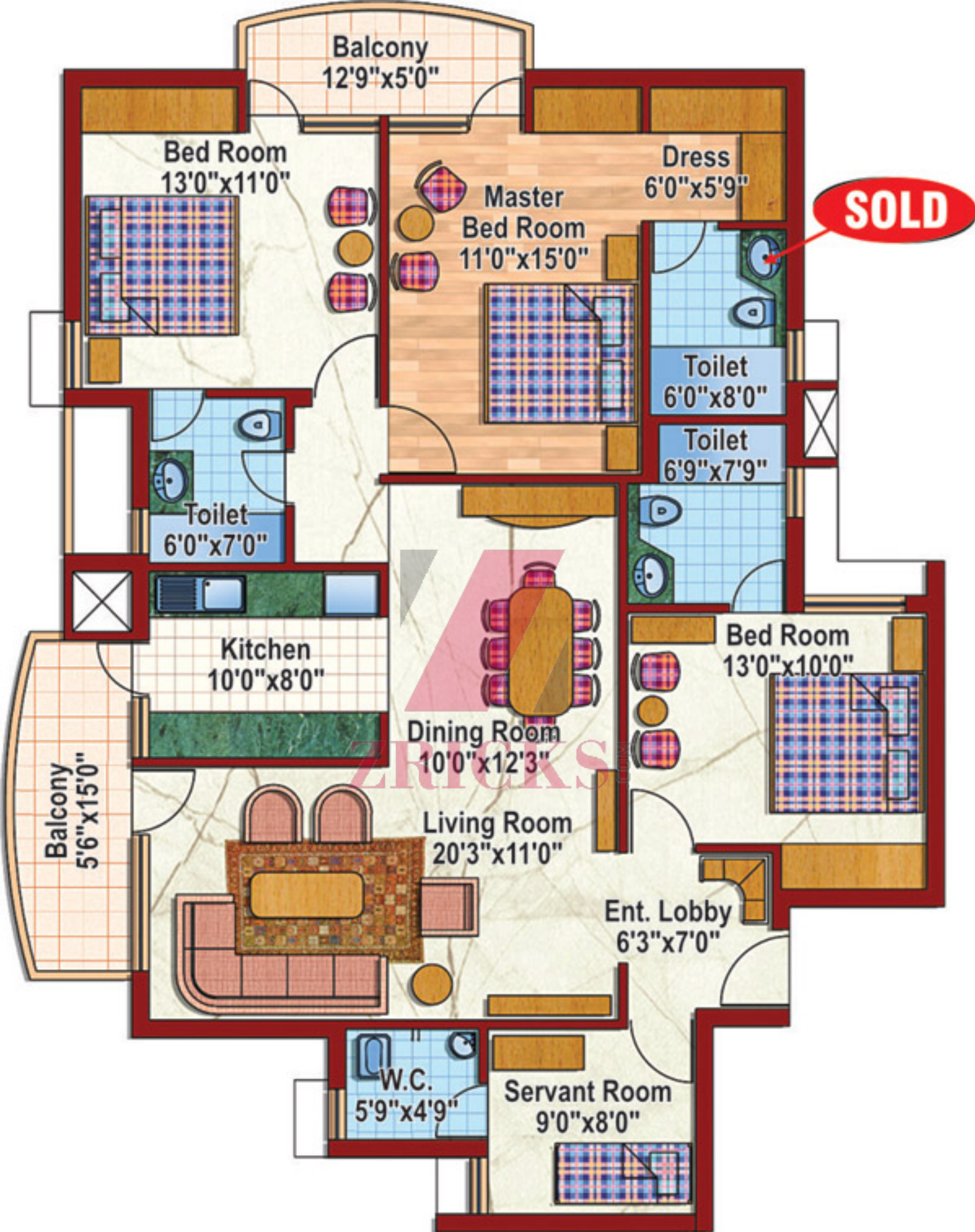
TYPICAL FLOOR PLAN



TYPE - BI



TYPE - BI



TYPICAL FLOOR PLAN



TYPE - PIII



TYPE - PIII

Specifications

- Structure** : Earthquake resistant RCC frame structure as per IS codes.
- Flooring** : Wooden flooring in master bedroom. All stairs and corridors with marble / kota stone flooring, vitrified tiles in D/D and in bedrooms.
- Tiles** : Anti Skid tiles in kitchen & bathroom.
- Exterior** : Permanent finish/textured paint.
- Kitchen** : Modular kitchen. Slabs are of well-finished granite stone with stainless steel sink and drain board. Glazed tile dado on wall upto 2ft. over counter.
- Bathrooms** : Equipped with Parryware/ Hindustan/ Cera or equivalent washbasins, mirrors and WCs. Chrome plate tap fittings of superior make.
- Doors & Windows** : All door and window frames in sal wood, champ, Assam wood with teak finished flush doors.
- Painting** : Oil bound distemper in entire flat.
- POP** : POP cornices and fan rings in entire flat.
- Electrical** : Electrical (copper) wiring as per IS code with modular switches. Circuits with MCBs of approved make. TV and telephone points in every room.
- Security** : Round the clock security system.



ZRIICKS

